

SOC SysOnChip, Inc.

*Never get lost again with
SysOn GPS Receivers!*



SysOn Bluetooth GPS
Smart Blue ^{mini}

User Manual v.1.0

CONTENT

1. Designation
2. Getting Started
3. PDA Connection Guide
4. User Tips
5. Unit Package
6. Optional Accessories

Do not plug in a car cigarette charger before starting a vehicle. It may damage the fuse of the cigarette charger or Smart Blue GPS.

Note

Thank you for purchasing SysOn™ Smart Blue GPS receiver. SysOn™ Smart Blue GPS Receiver is a wireless GPS receiver which turns a Bluetooth-enabled PDA or a computing device to a wireless navigation system.

Please carefully read this user guide instruction before using the product.

Disclaimer and limitation of liability

Sysonchip, Inc. and its affiliated companies assume no responsibility for any damages and loss resulting from the use of this manual and also by deletion of data as a result of malfunction, dead battery, or misuse of the product in any way.

Warning

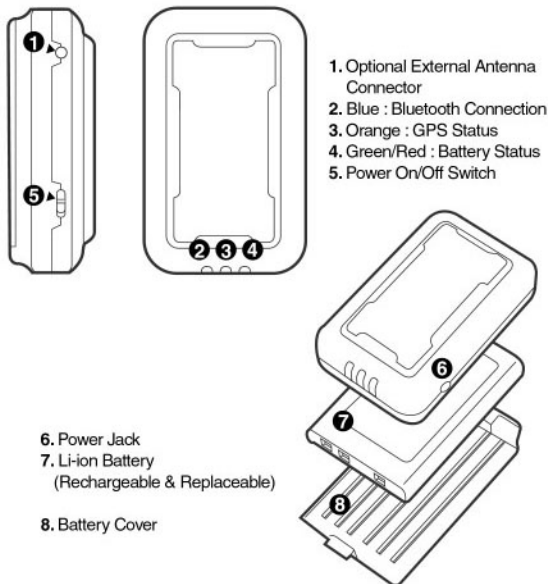
Any kind of changes or modification of the product that are not officially approved by Sysonchip will void the owner's warranty and also any other obligation of Sysonchip to repair or replace the product.

Information and instruction in the manual is subject to change without notice at any time.

Online Product Registration

http://www.sysonchip.co.kr/eng/supp/sup_reg.htm

1. Designation



NO	FUNCTION	
1	Optional External Antenna Connector Port	You may use an external antenna optionally instead of a built-in internal antenna. Simply plug the external antenna into the port.
2	Battery Status LED	RED ON : During charging battery with connection to a power charger. It is getting lighter during charging. OFF : Once battery is fully charged.
		GREEN ON : Low battery indication. Charge battery immediately. OFF : Normal status. Battery has adequate power supply.
3	GPS Status LED	ORANGE ON : Current position fixed. BLINKING : During GPS signal reception. OFF : Waiting for GPS signal reception.
4	Bluetooth Status LED	BLUE ON : Bluetooth connection is on and ready for data transmission. BLINKING : No Bluetooth connection yet. Searching Bluetooth connection.
5	Power Switch	Power on/off switch
6	Power Jack	Connect a power charger to the power jack to recharge the internal battery.
7	Battery	Rechargeable and replaceable Lithium-ion Battery
8	Battery Cover	Battery cover

2. Getting Started

2.1 Charge the battery

- 1) Before using SysOn™ Smart Blue GPS Receiver, the battery must be fully charged. First, connect the power charger to the power jack, then plug into an electrical outlet. The battery status LED (red) will turn on. As the device is charging, the red light is getting lighter and finally turns off once it is fully charged.

2.2 Turn on the GPS receiver

- 1) Turn on the SysOn™ Smart Blue GPS Receiver using the power switch. The Bluetooth LED (blue) will blink.
- 2) The GPS status LED (orange) will blink once it starts getting GPS reception from satellites.

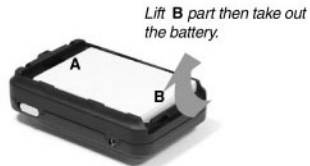
2.3 Connect to Bluetooth-enabled PDA or computing devices

- 1) Perform Bluetooth device discovery from your Bluetooth enabled PDA or mobile computing devices. Refer to the user guide manual of your Bluetooth enabled PDA or devices for Bluetooth connection instructions.
- 2) The Bluetooth LED (blue) blinks during finding Bluetooth connection. After the connection is done between SysOn Smart Blue GPS and Bluetooth enabled device, the Bluetooth LED (blue) will be on.

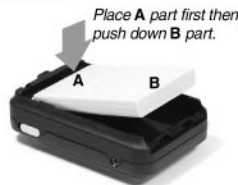
* How to change the battery

SysOn™ Smart Blue uses a replaceable Lithium-ion battery.

1. Push the arrow and pull down the battery cover with your finger. Just dragging the cover may cause the breakage of the inside hook.
2. Lift the separate cover and take out the battery. When you take it out, pull and lift the bottom part (**B** part) first.



3. Put the upper part (**A** part) of a new battery inside the space like the picture. Then, push down the lower part (**B** part) to make it flat.
4. After changing the battery, put the battery cover on it and slide it up. You can hear the "click" sound when you slide up the cover.



3. PDA Connection Guide

3. 1 Bluetooth connection with SysOn™ Smart Blue GPS



1. PDA main screen



2. Tab iPAQ Wireless, then select "Bluetooth Manager".



3. Tab "New" at the bottom bar.



4. Bluetooth Connection Wizard starts.
Tab "Next".



5. Tab "Next".



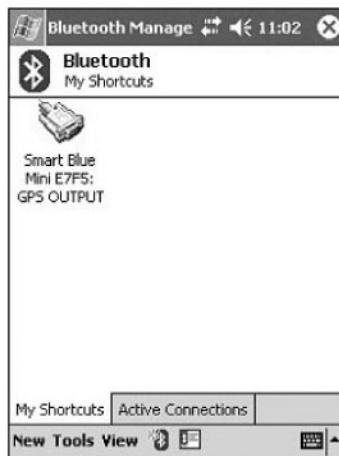
6. Several tasks require you to locate a device and connect it. Then, it will automatically find Bluetooth devices placed around the PDA. Then, tab "Smart Blue Mini E7F5". Instead of "E7F5", you will see different letter. It is the unique number for each GPS.



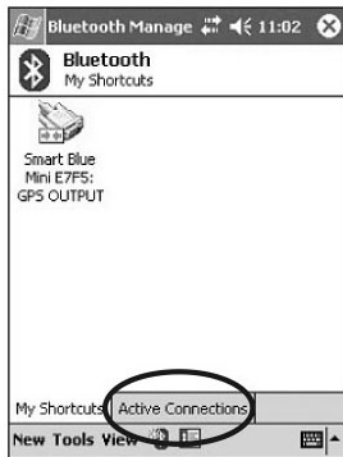
7. Select "GPS OUTPUT" of Service Selection. Tab "Next".



8. Connection shortcuts were successfully created. Tab "Finish".

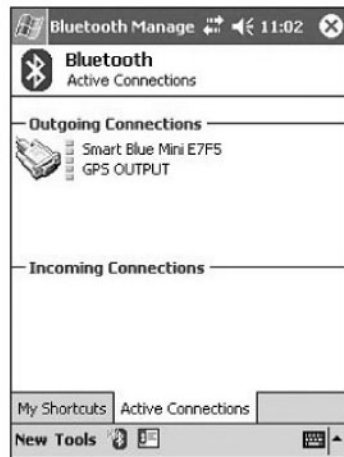


9. Connection was successfully established with SysOn™ Smart Blue GPS receiver on GPS OUTPUT. To connect with BT GPS, double click "Smart Blue Mini E7F5:GPS OUTPUT" icon, or tab and hold it and click "Connect".



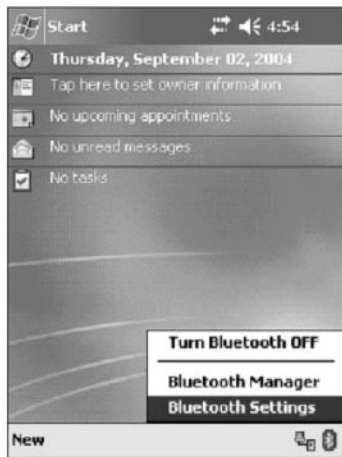
10. Once it is successfully connected, you will see like the above screen.

11. Then, if you want to see more information, tab "Active Connections".

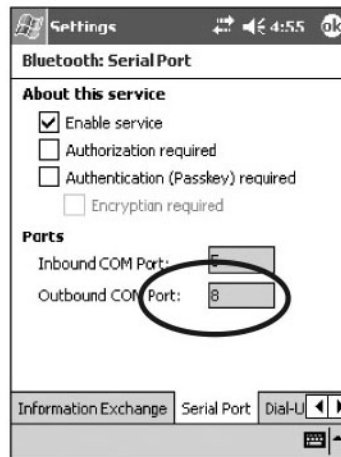


12. You will see the connection status.

3.2 COM port and Baud rate setting

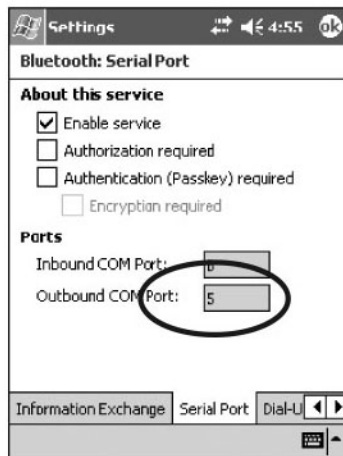


Note.
The inbound COM port is used when any other device initiates a serial connection. The outbound COM port is used when you initiate a serial connection to another device.

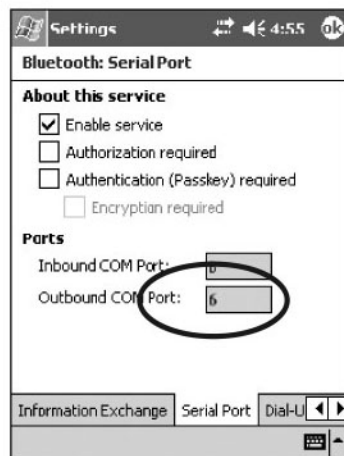


1. To identify the COM port:
 - a. From the main screen, tap the Bluetooth icon at the bottom bar, and tab "Bluetooth Settings".
 - b. Tap "Serial Port".
 - c. Check the inbound and outbound COM port no.
 - d. Tap OK.
 - e. Put the "Outbound COM Port" no. into your navigation software setting. And, "Baud rate" is 38400 (NEMA).

2. iPAQ 22xx/38xx/39xx/54xx/55xx series : COM8



3. iPAQ 1940 series : COM5



4. iPAQ 41xx/43xx series : COM6

4. User Tips

Following environment may affect signal receptions.

- Some vehicles having heavy metallic sun protecting coating on windshields, which may affect the GPS signal. Optional external antenna can be helpful by placing it on the uncoated upper or down part of the windshield, or on the roof of the vehicles.
- In and around high buildings.
- Under bridges or in tunnels.
- Low battery of a PDA or a SysOn™ Smart Blue GPS receiver.

In order to use SysOn™ GPS efficiently, please follow the below principles.

- Please place the SysOn™ GPS receiver to be able to see the clear view of the sky.
- In case of low battery level (Green LED warning), please recharge the GPS battery fully.

Please check the correct "COM" port for your PDA model and "Baudrate".

- Please refer to the port and baudrate setting section. (NEMA 38400)

To avoid fuse burning in the car cigarette charger, plug in the cigarette charger after igniting the car.

To prevent any accidents which might be caused with rechargeable battery at high temperature, please do not leave alone the SysOn™ Smart Blue GPS for long time at a vehicle when it is not used.

Do not expose the internal battery to high temperature over 140°F (50°C).

Do not disassemble the battery.

Use only power supplies included in the unit package provided by the manufacturer, or officially approved by the manufacturer.

Pocket Bluetooth Tools for O2 XDA II and MDA II users.

There had been a known problem and an issue at O2 XDA II / MDA II for its Bluetooth use.

That was not only with SysOn™ Smart Blue GPS but also with any other Bluetooth GPS receivers and this kind of Bluetooth peripherals. And, now it is known that this model was recently upgraded properly and supports the Bluetooth SPP correctly.

But, if you have an old version and feel any difficulties to use it with Bluetooth GPS, please visit the following website and refer to the instruction. It is called the "Pocket Bluetooth Tools" software.

Before downloading the following patch file and executing it, carefully read and follow the instruction there. : Pocket Bluetooth Tools for the O2 XDA II and the MDA II (BTHTools1100.zip)

http://www.bluetooth.jazztel.es/download_e.html/

And, the connection COM port setting is COM 4.
(Select serial port : COM4)

Please be aware this is the third party solution which was developed in the internet and is not supplied by SysOnChip. SysOnChip has no responsibility for any damages and loss resulting from the use of this software.

* This model can also be known as O2 XDA II, Qtek 2020, T-Mobile MDA II, Siemens SX-56, iMate Pocket PC or Orange SPV1000.

5. Unit Package

SysOn™ Smart Blue GPS
User Manual
S/W CD (SysOn™ GPS Viewer Program)
Cigarette Charger or AC Adaptor (optional)

* Unit package contents might vary depending on countries without notice.

6. Optional Accessories

External Active Patch Antenna (Optional)

Generally SysOn™ Smart Blue GPS provides excellent high sensitivity and gets GPS reception so quickly without an external antenna even in the difficult situation like urban canyons, foliage, etc.

But, some special metallic windshield coating of vehicles may interrupt the GPS signal itself passing through the car windows. SysOn™ Optional External Antenna will be so helpful to boost GPS signal reception just by being placed on the uncoated upper or down side of the windshield.



Y Cable (Optional)



Cigarette Charger (Optional)



* Unit package contents might vary depending on countries without notice.

Limited Warranty

Sysonchip, Inc. warrants SysOn™ Smart Blue GPS product against defects in material and workmanship, under normal use and service, for one (1) year from the date of purchase.

The warranty period of a rechargeable battery and consumables are six (6) months from the date of purchase.

Incompatibility is not a defect covered by Sysonchip's warranty. If the product is found to be defective in material or workmanship during this period, Sysonchip or one of its authorized distributors will, at its option, repair or replace the defective product without charge when furnished with proof of retail purchase. If you ship the product to Sysonchip or one of authorized distributors, you must use the original container or equivalent and the shipping charges are responsible for you. Sysonchip or distributors will bear shipping charges for returning the product.

This warranty does not apply to any product which has been subjected to alteration, unsealing or disassembly in any cases.

Sysonchip is not responsible for incidental or consequential damages resulting from breach of any express or implied warranty, including damage to property and, to the extent permitted by law, damages for personal injury. This warranty is in lieu of all other warranties including implied warranties of merchantability and fitness for a particular purpose.

WARRANTY LIMITATIONS AND EXCLUSIONS

This warranty applies only to the original consumer purchaser and is not assignable or transferable.

This warranty does not apply to any product which has been subjected to misuse, misapplication, abuse, abnormal use, negligence, alteration or accident, or any product having its serial number altered or removed.

This warranty does not apply to any defects or damage directly or indirectly caused by or resulting from the use of unauthorized replacement parts and/or service performed by unauthorized person.

Some jurisdictions do not allow the exclusion or limitation of incidental or consequential damages, so the above limitations or exclusion may not apply to you. This limited warranty gives you specific legal right, and you may also have other rights that vary from jurisdiction to jurisdiction

FCC Regulatory Compliance

<<NOTICE>>

* Section 15.19 Labelling requirements

This device complies with part 15 of the FCC rules.

Operation is subject to the following two conditions:

- (1) This device may not cause harmful interference and
- (2) This device must accept any interference received, including interference that may cause undesired operation.

* Section 15.21 Information to user

The changes or modifications not expressly approved by the party responsible for compliance

could void the user's authority to operate the equipment.

* IMPORTANT NOTE

To comply with the FCC RF exposure compliance requirements, no change to the antenna or the device is permitted. Any change to the antenna or the device could result in the device exceeding the RF exposure requirements and void user's authority to operate the device.

THIS DEVICE COMPLIES WITH PART 15 OF THE FCC RULES.
OPERATION IS SUBJECT TO THE FOLLOWING TWO CONDITIONS:
(1) THIS DEVICE MAY NOT CAUSE HARMFUL INTERFERENCE
AND (2) THIS DEVICE MUST ACCEPT ANY INTERFERENCE RECEIVED,
INCLUDING INTERFERENCE THAT MAY CAUSE UNDESIRE
D OPERATION.

CE Mark Statement

Electrical Safety

EN 60950-1:2001

Safety of information technology equipment

Health

EN 50371:2002

Generic standard to demonstrate the compliance of low power electronic and electrical apparatus with the basic restrictions related to human exposure to electromagnetic fields (10 MHz - 300 GHz) - General public

EMC

EN 301 489-01 V1.4.1 (08-2002)

ELECTROMAGNETIC COMPATIBILITY AND RADIO SPECTRUM MATTERS (ERM); ELECTROMAGNETIC COMPATABILITY (EMC) STANDARD FOR RADIO EQUIPMENT AND SERVICES; PART 1: COMMON TECHNICAL REQUIREMENTS

EN 301 489-17 V1.2.1 (08-2002)

ELECTROMAGNETIC COMPATIBILITY AND RADIO SPECTRUM MATTERS (ERM); ELECTROMAGNETIC COMPATIBILITY (EMC) STANDARD FOR RADIO EQUIPMENT AND SERVICES; PART 17: SPECIFIC CONDITIONS FOR 2,4 GHZ WIDEBAND TRANSMISSION SYSTEMS AND 5 GHZ HIGH PERFORMANCE WLAN EQUIPMENT

Radio

EN 300 328-2 V1.2.1 (12-2001)

ELECTROMAGNETIC COMPATIBILITY AND RADIO SPECTRUM MATTERS (ERM); WIDEBAND TRANSMISSION SYSTEMS; DATA TRANSMISSION EQUIPMENT OPERATING IN THE 2,4 GHZ ISM BAND AND USING SPREAD SPECTRUM MODULATION TECHNIQUES; HARMONIZED EN COVERING ESSENTIAL

SysOn Bluetooth GPS
Smart Blue *mini*



Address 14 Fl, Sahakyeongum Bldg., 929, Dunsan-Dong, Seo-Gu, Daejeon, 302-828, Korea
Phone +82, 42, 864, 4665 Ext.105 **Fax** +82, 42, 864, 4664
E-mail sales@sysonchip.co.kr www.sysonchip.co.kr www.sysonchip.co.kr/eng



CE 0197



FC

