

US Tech Test Report:
FCC ID:
IC:
Test Report Number:
Issue Date:
Customer:
Model:

FCC Part 15 Certification/ RSS 247
P2SR900CEM
4171B-R900CEM
24-0386
January 14, 2025
Neptune Technology Group Inc.
R900CEM

INTERNAL PHOTOGRAPHS



Figure 1. EUT, Cover Removed

US Tech Test Report:
FCC ID:
IC:
Test Report Number:
Issue Date:
Customer:
Model:

FCC Part 15 Certification/ RSS 247
P2SR900CEM
4171B-R900CEM
24-0386
January 14, 2025
Neptune Technology Group Inc.
R900CEM



Figure 2. Main Board, Enclosure Empty

US Tech Test Report:
FCC ID:
IC:
Test Report Number:
Issue Date:
Customer:
Model:

FCC Part 15 Certification/ RSS 247
P2SR900CEM
4171B-R900CEM
24-0386
January 14, 2025
Neptune Technology Group Inc.
R900CEM



Figure 3. Main Board and Battery Removed

US Tech Test Report:
FCC ID:
IC:
Test Report Number:
Issue Date:
Customer:
Model:

FCC Part 15 Certification/ RSS 247
P2SR900CEM
4171B-R900CEM
24-0386
January 14, 2025
Neptune Technology Group Inc.
R900CEM

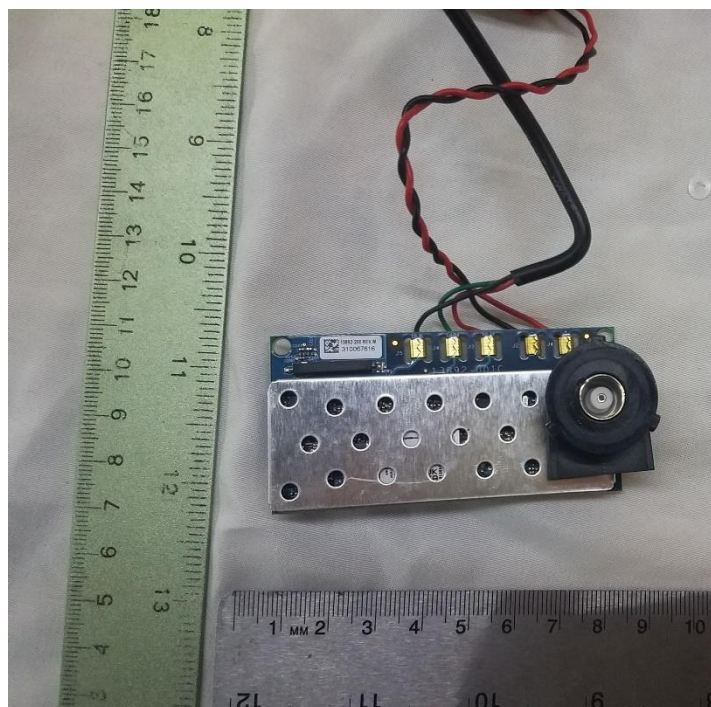


Figure 4. Main Board Shielded, Top

US Tech Test Report:
FCC ID:
IC:
Test Report Number:
Issue Date:
Customer:
Model:

FCC Part 15 Certification/ RSS 247
P2SR900CEM
4171B-R900CEM
24-0386
January 14, 2025
Neptune Technology Group Inc.
R900CEM

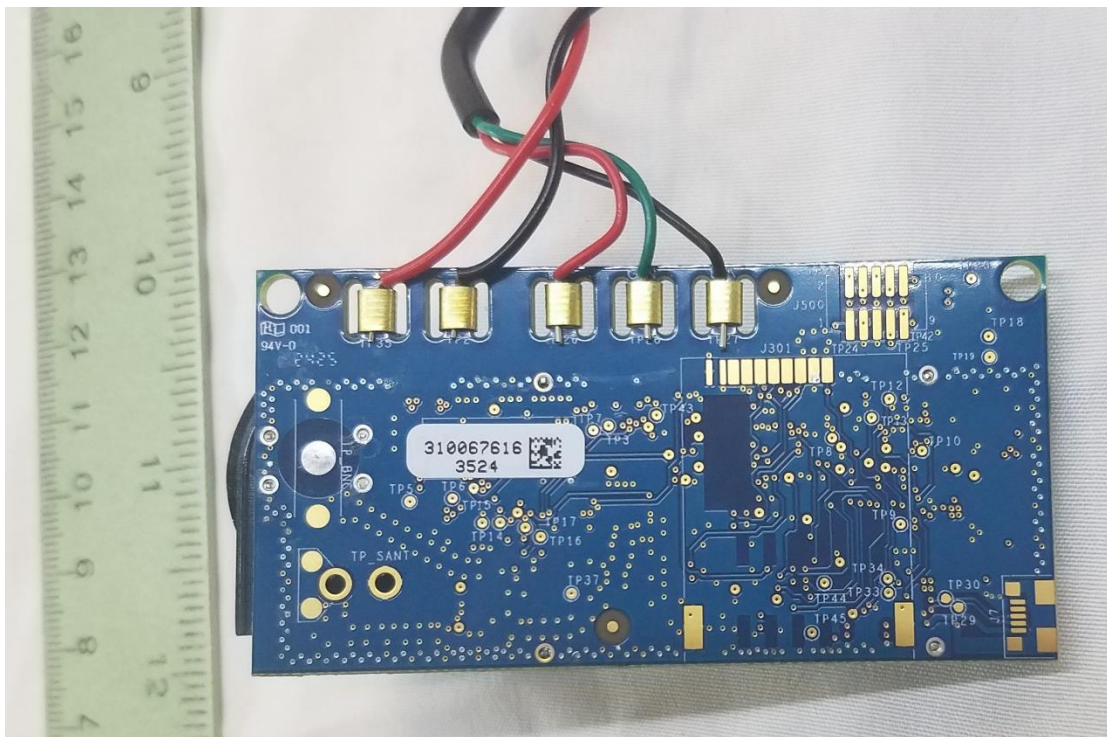


Figure 5. Main Board, Bottom

US Tech Test Report:
FCC ID:
IC:
Test Report Number:
Issue Date:
Customer:
Model:

FCC Part 15 Certification/ RSS 247
P2SR900CEM
4171B-R900CEM
24-0386
January 14, 2025
Neptune Technology Group Inc.
R900CEM

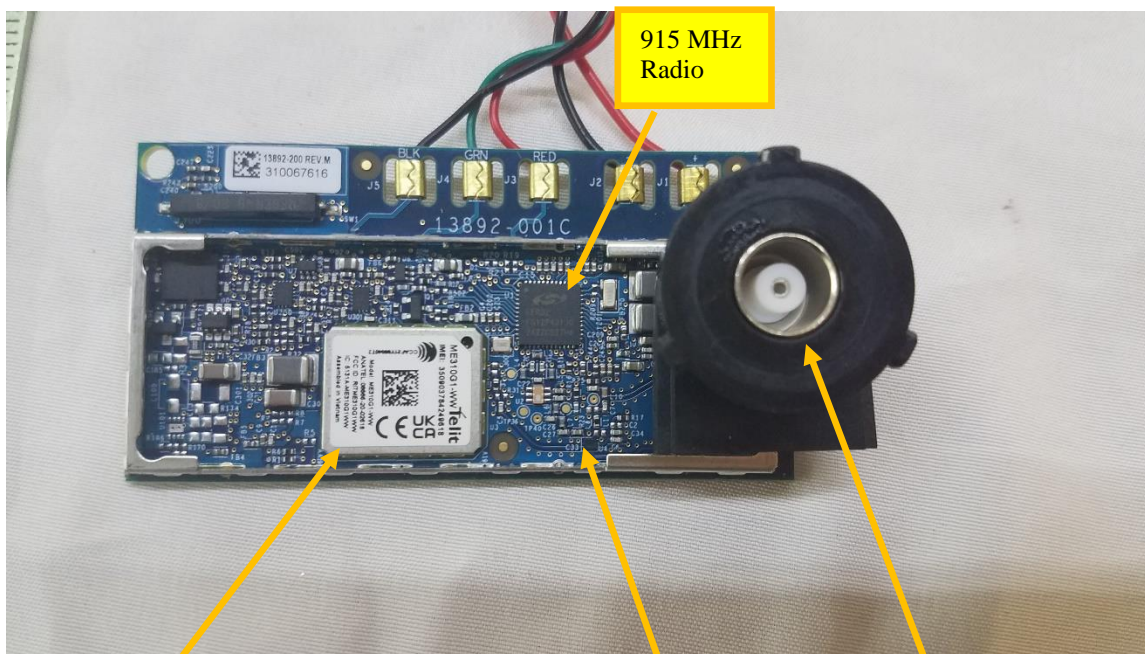


Figure 6. Main PCB Shield Removed

LTE
Radio

LTE antenna

915 MHz antenna
port

US Tech Test Report:
FCC ID:
IC:
Test Report Number:
Issue Date:
Customer:
Model:

FCC Part 15 Certification/ RSS 247
P2SR900CEM
4171B-R900CEM
24-0386
January 14, 2025
Neptune Technology Group Inc.
R900CEM

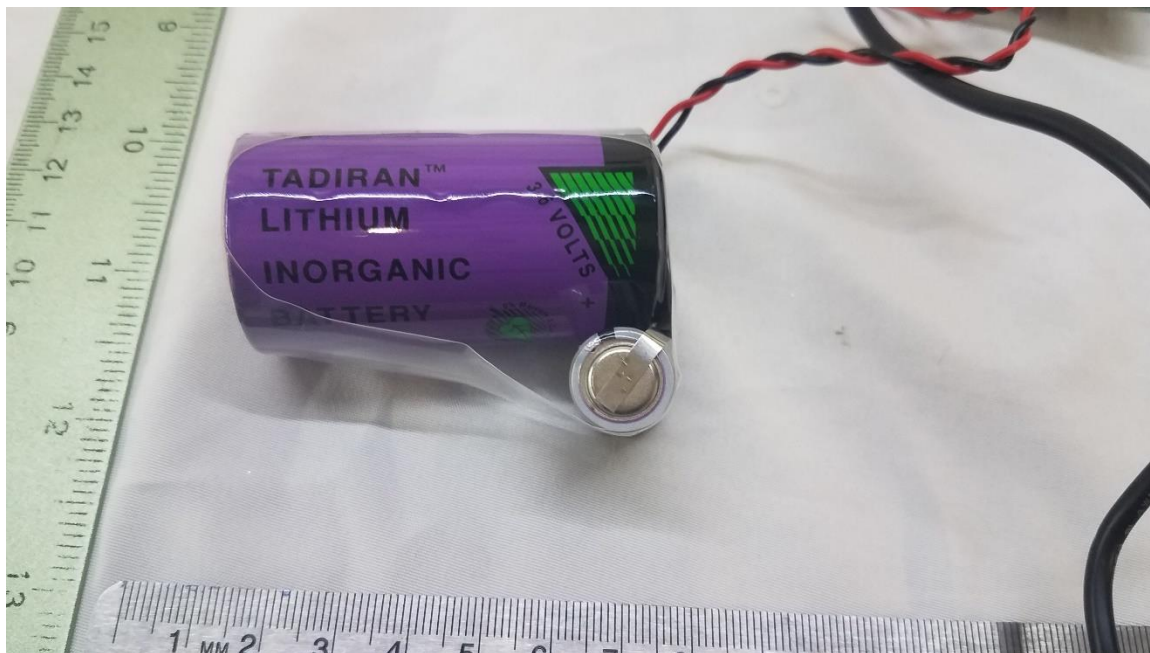


Figure 7. Battery

US Tech Test Report:
FCC ID:
IC:
Test Report Number:
Issue Date:
Customer:
Model:

FCC Part 15 Certification/ RSS 247
P2SR900CEM
4171B-R900CEM
24-0386
January 14, 2025
Neptune Technology Group Inc.
R900CEM



Figure 8. Booster Battery