

US Tech Test Report:  
FCC ID:  
IC:  
Test Report Number:  
Issue Date:  
Customer:  
Model:

FCC Part 15 Certification/ RSS 247  
P2SR900CE  
4171B-R900CE  
23-0195  
October 17, 2023  
Neptune Technology Group Inc.  
R900

## INTERNAL PHOTOGRAPHS



**Figure 1. EUT, Cover Removed and Empty**

US Tech Test Report:  
FCC ID:  
IC:  
Test Report Number:  
Issue Date:  
Customer:  
Model:

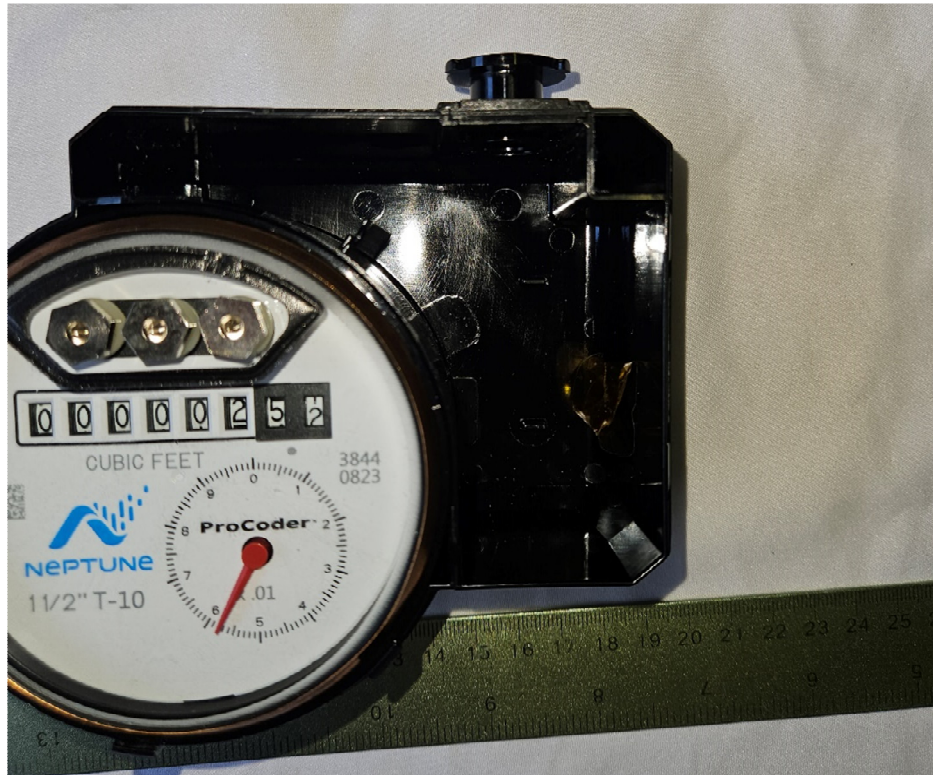
FCC Part 15 Certification/ RSS 247  
P2SR900CE  
4171B-R900CE  
23-0195  
October 17, 2023  
Neptune Technology Group Inc.  
R900



**Figure 2. Main Board, Installed**

US Tech Test Report:  
FCC ID:  
IC:  
Test Report Number:  
Issue Date:  
Customer:  
Model:

FCC Part 15 Certification/ RSS 247  
P2SR900CE  
4171B-R900CE  
23-0195  
October 17, 2023  
Neptune Technology Group Inc.  
R900

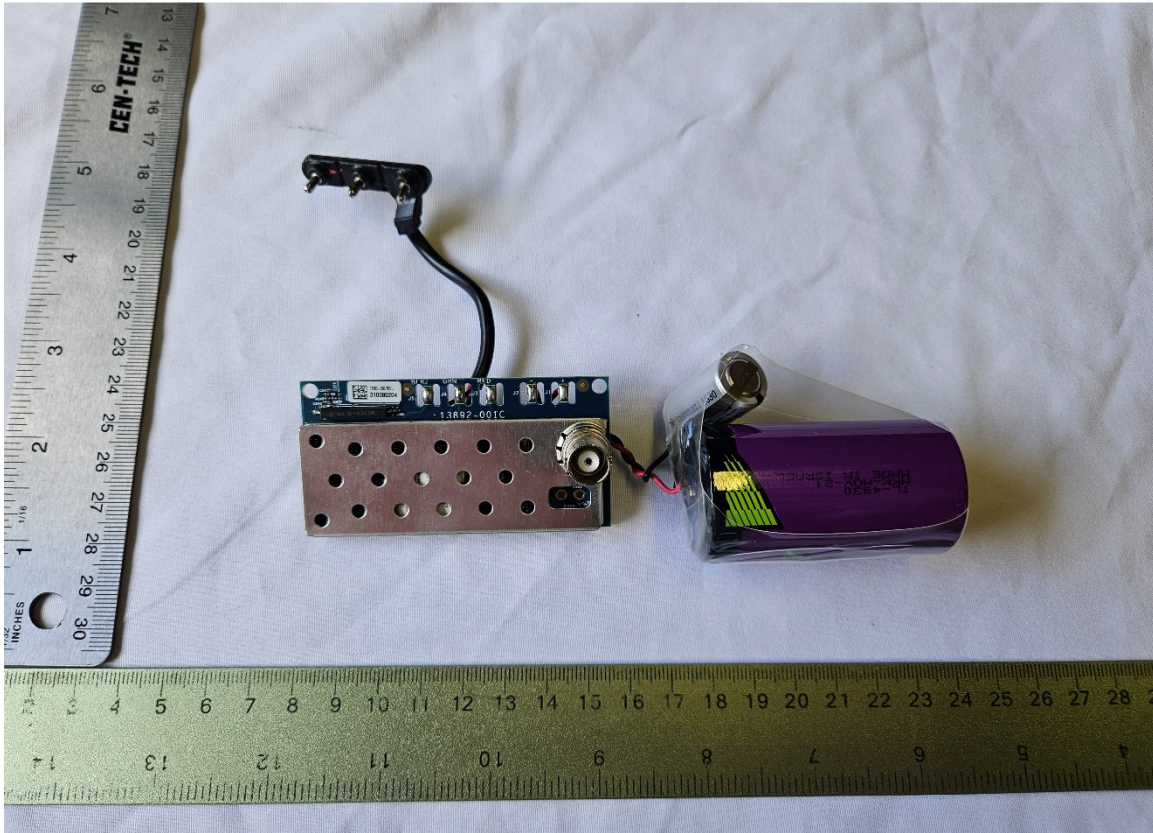


**Figure 3. Enclosure, Electronics Removed**



US Tech Test Report:  
FCC ID:  
IC:  
Test Report Number:  
Issue Date:  
Customer:  
Model:

FCC Part 15 Certification/ RSS 247  
P2SR900CE  
4171B-R900CE  
23-0195  
October 17, 2023  
Neptune Technology Group Inc.  
R900



**Figure 4. Main Board, Top, With Shield**

US Tech Test Report:  
FCC ID:  
IC:  
Test Report Number:  
Issue Date:  
Customer:  
Model:

FCC Part 15 Certification/ RSS 247  
P2SR900CE  
4171B-R900CE  
23-0195  
October 17, 2023  
Neptune Technology Group Inc.  
R900

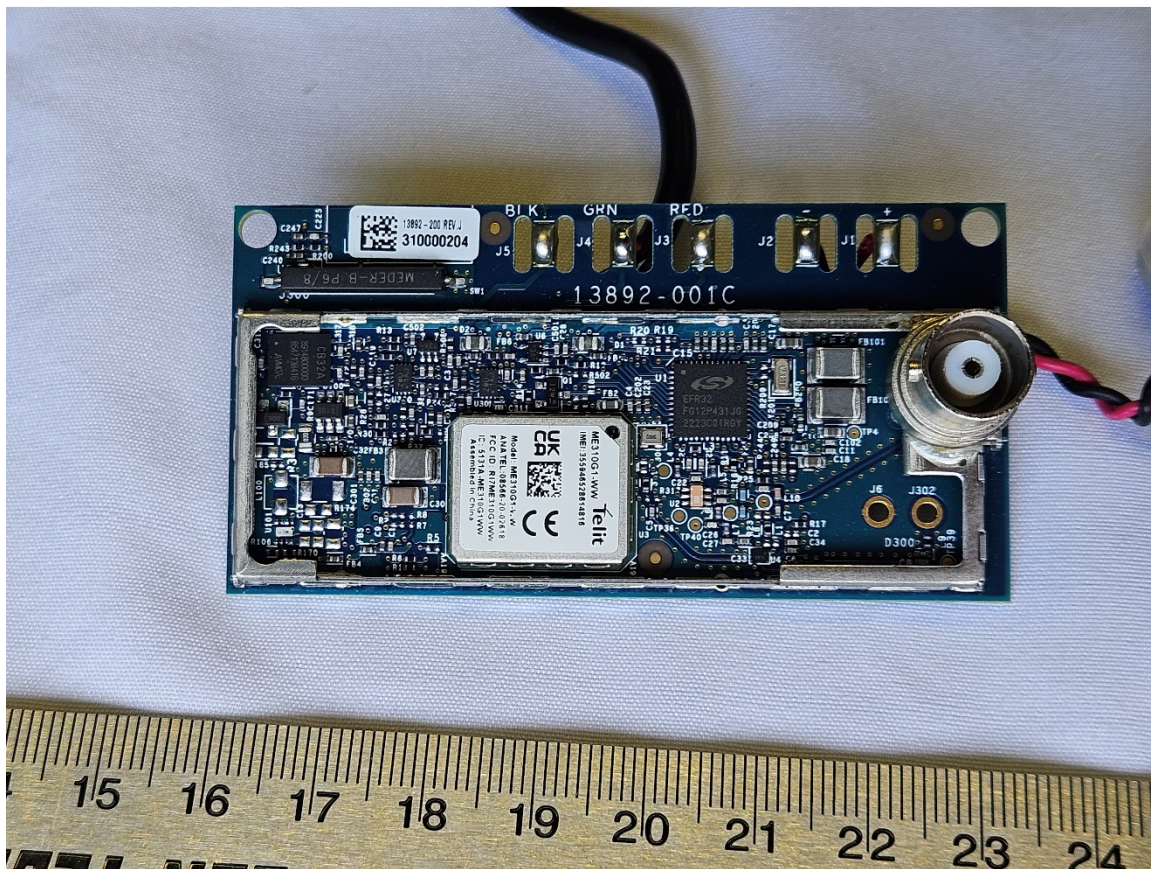


Figure 5. Main Board, Top, Shield Removed