

US Tech Test Report:
FCC ID:
IC:
Test Report Number:
Issue Date:
Customer:
Model:

FCC Part 15 Certification
P2SR900CE
4171B-R900CE
20-0363
February 9, 2021
Neptune Technology Group, Inc.
R900

Internal Photographs



Figure 1. EUT, Case Open

US Tech Test Report:
FCC ID:
IC:
Test Report Number:
Issue Date:
Customer:
Model:

FCC Part 15 Certification
P2SR900CE
4171B-R900CE
20-0363
February 9, 2021
Neptune Technology Group, Inc.
R900

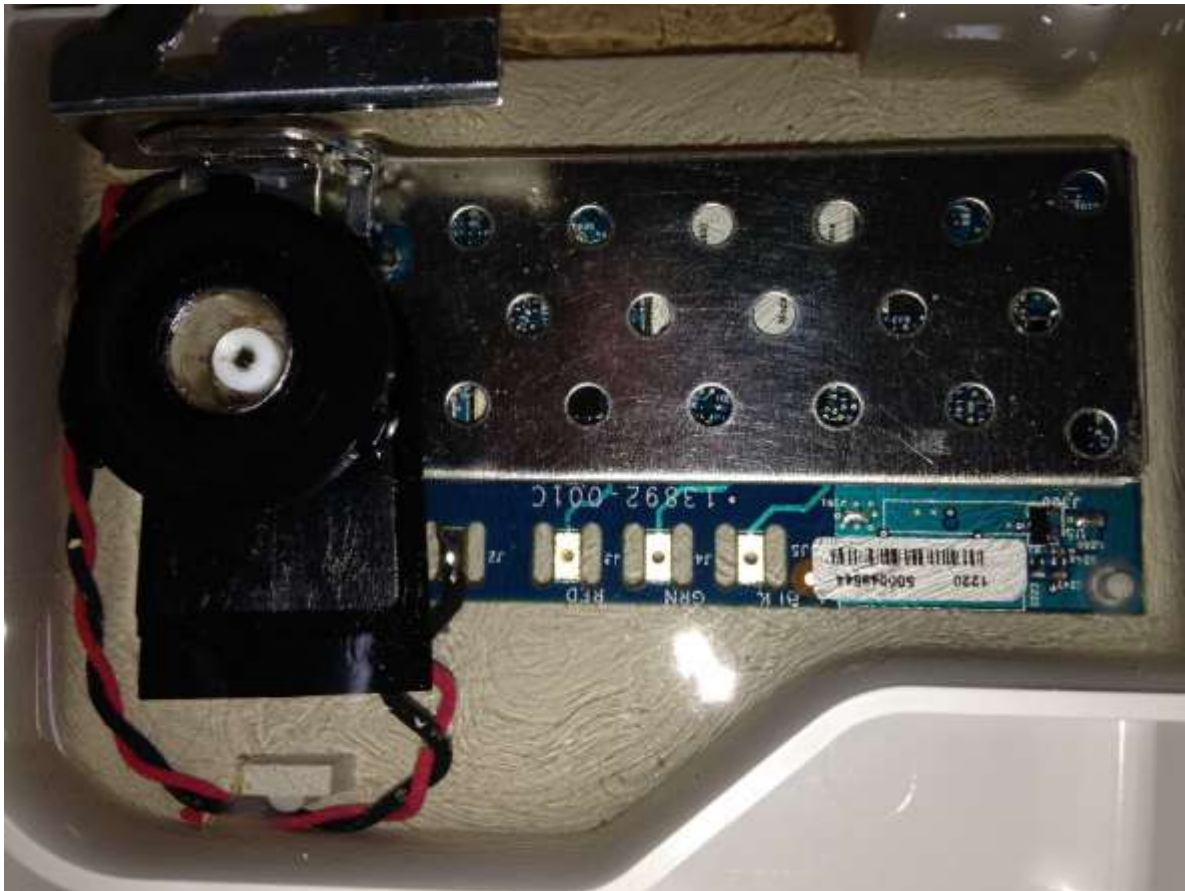


Figure 2. EUT, Close-up of Circuitry in Open Case

US Tech Test Report:
FCC ID:
IC:
Test Report Number:
Issue Date:
Customer:
Model:

FCC Part 15 Certification
P2SR900CE
4171B-R900CE
20-0363
February 9, 2021
Neptune Technology Group, Inc.
R900

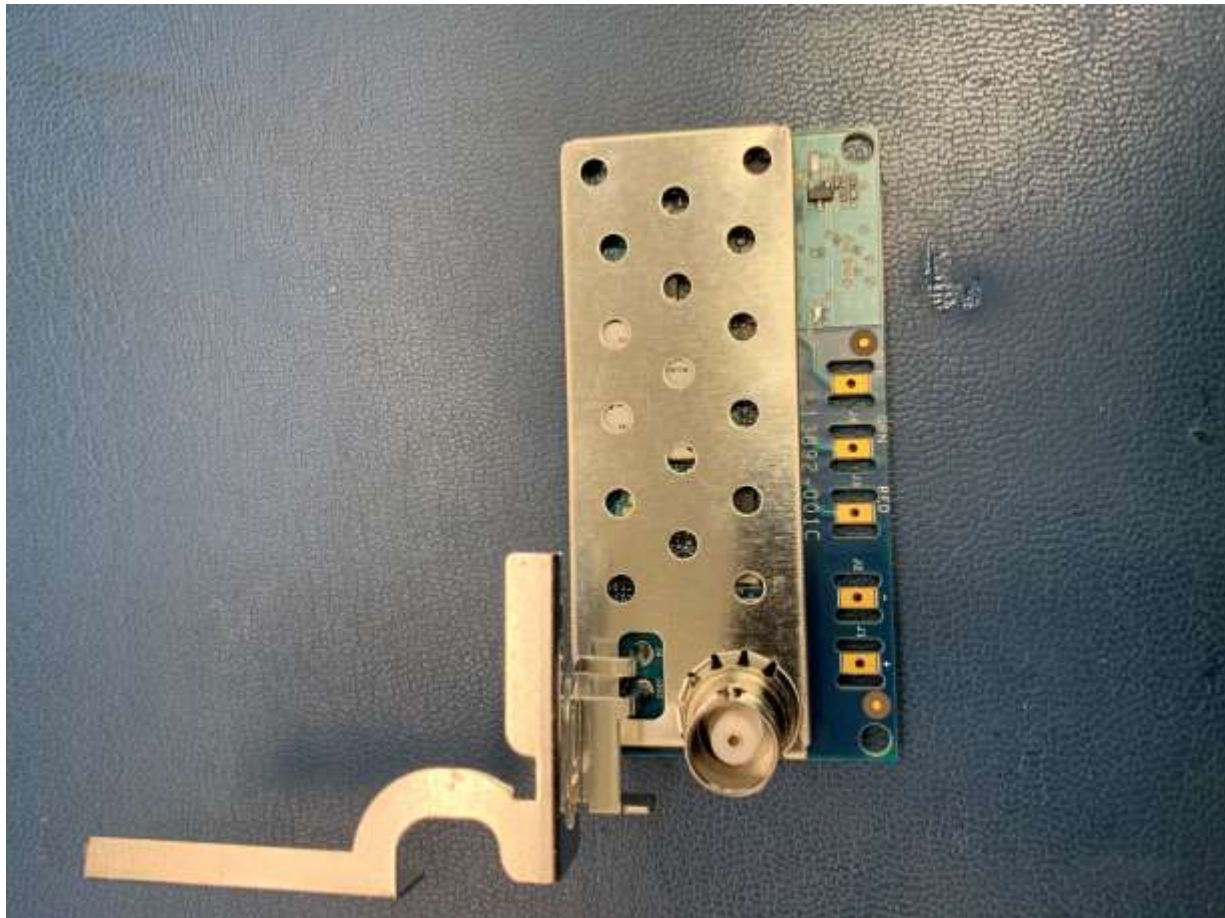


Figure 3. Top View of PCB, with Shield and Internal Antenna

US Tech Test Report:
FCC ID:
IC:
Test Report Number:
Issue Date:
Customer:
Model:

FCC Part 15 Certification
P2SR900CE
4171B-R900CE
20-0363
February 9, 2021
Neptune Technology Group, Inc.
R900



Figure 4. Top View of PCB, Shield Removed

Note: Telit is the cellular module which is already certified.

US Tech Test Report:
FCC ID:
IC:
Test Report Number:
Issue Date:
Customer:
Model:

FCC Part 15 Certification
P2SR900CE
4171B-R900CE
20-0363
February 9, 2021
Neptune Technology Group, Inc.
R900



Figure 5. Bottom of PCB, with Shield and Antenna

US Tech Test Report:
FCC ID:
IC:
Test Report Number:
Issue Date:
Customer:
Model:

FCC Part 15 Certification
P2SR900CE
4171B-R900CE
20-0363
February 9, 2021
Neptune Technology Group, Inc.
R900



Figure 6. Bottom of PCB, Shield and Antenna Removed