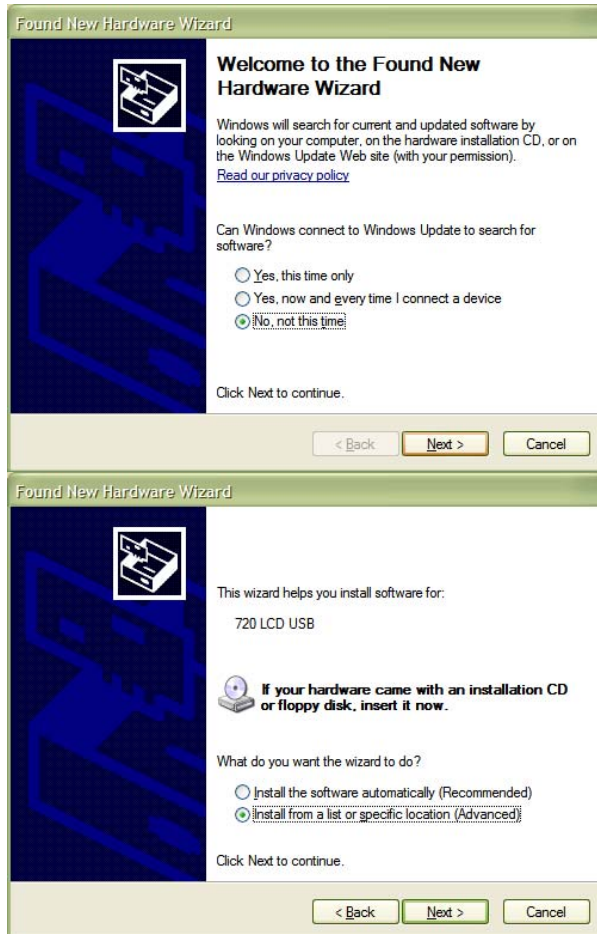




Installation Manual

Installing the Drivers

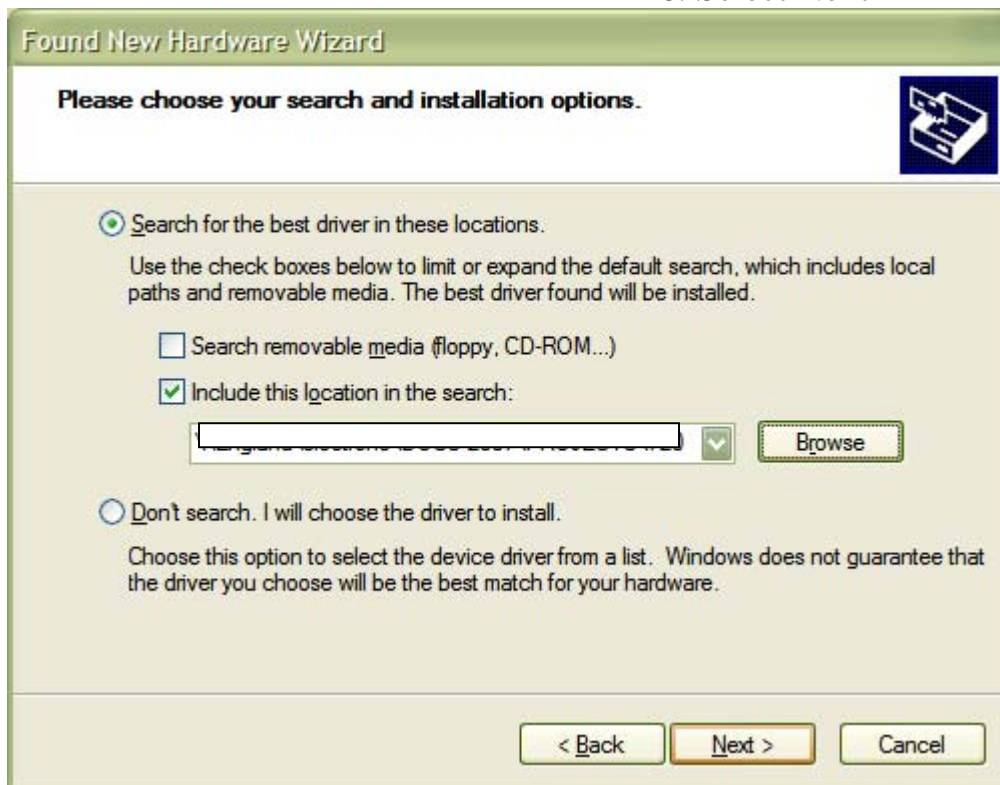
1. Insert the Disc provided by EAL
2. Load the “Drivers” folder to a location on your PC
3. Plug in the 720 U keypad into a USB port on your PC
4. Select Find Driver Location When Prompted



5. Browse to the location where you stored the “Drivers” Folder and select the folder containing your operating system.



6. Select Next



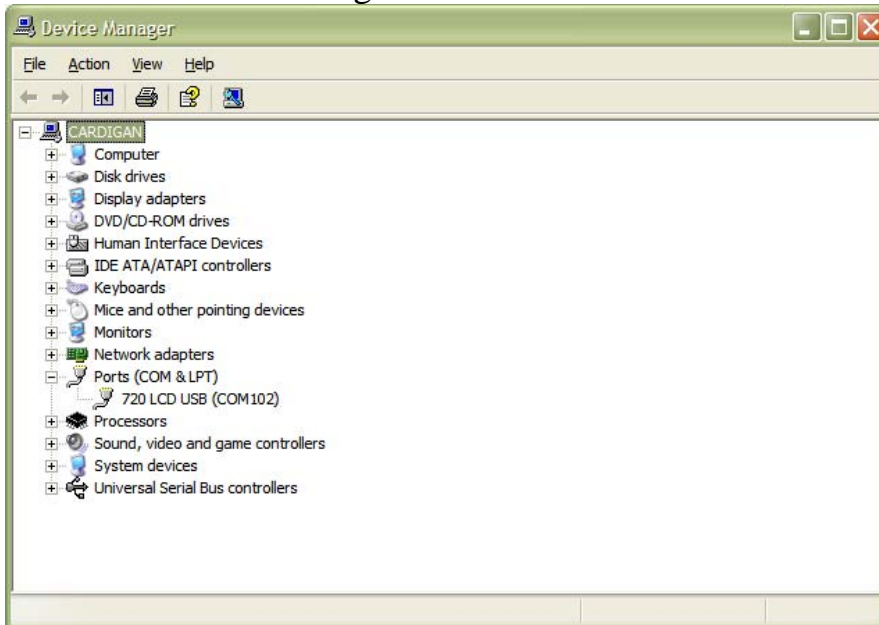
7. If prompted select Continue Anyway



8. Select Finish when done installing.
9. In most cases the installation process will repeat for the Virtual Comport. So you will need to follow steps 4-8 twice when installing the 720U. Some systems may require a restart after installation.

Setup

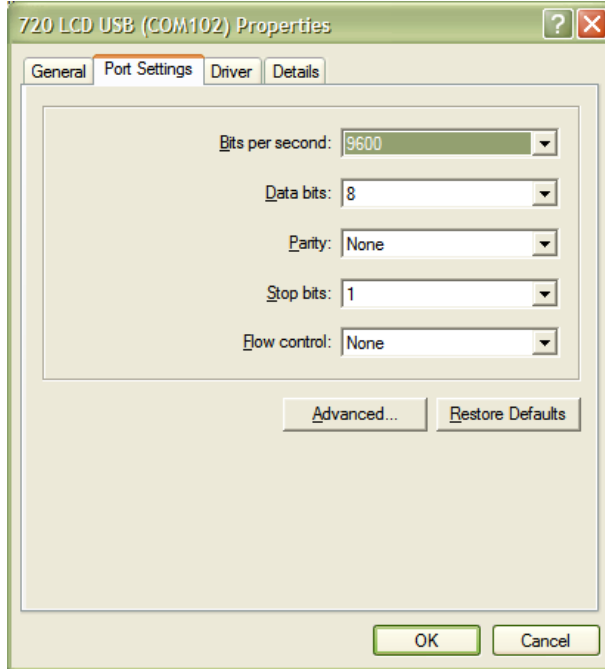
1. Go to Control Panel > System > Hardware
2. Select Device Manager > Ports



3. You may right click on the 720 LCD USB > Properties to change settings.



4. The default and recommended Settings are as follows



5. You can select Advanced to change the COM Number

You can now communicate with the 720U via the Com Port you assigned to the device.

FCC Notice:

NOTE: THE MANUFACTURER IS NOT RESPONSIBLE FOR ANY RADIO OR TV INTERFERENCE CAUSED BY UNAUTHORIZED MODIFICATIONS TO THIS EQUIPMENT. SUCH MODIFICATIONS COULD VOID THE USER'S AUTHORITY TO OPERATE THE EQUIPMENT.

For technical assistance please contact Electrone Americas at 561-395-3398 or erich@electroneamericas.com