



follow us



facebook.com/driftinnovation



vimeo.com/driftinnovation



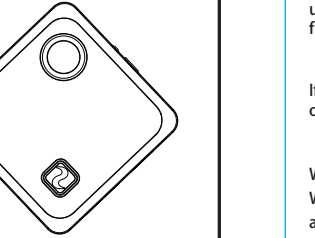
instagram.com/drift_innovation



twitter.com/driftinnovation



DRIFTINNOVATION.COM



Thank you for purchasing the Camera.

CUSTOMER SUPPORT

Download the full manual and check our official website for firmware updates, customer support, news about our products and videos from our users:
www.driftinnovation.com

If you have any suggestions, comments or concerns, please contact our customer support team at:
support@driftinnovation.com

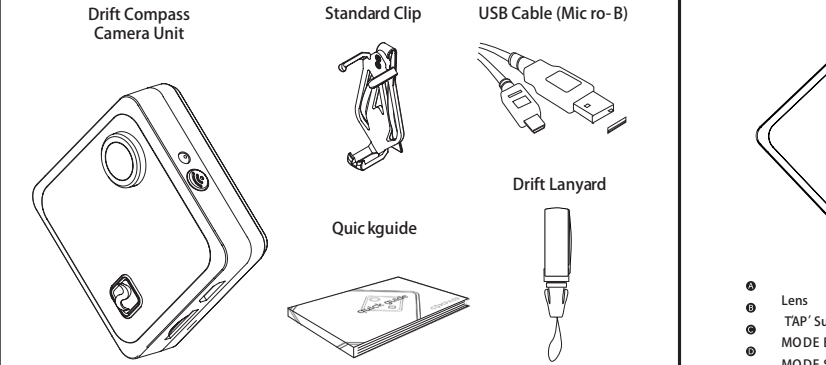
WARRANTY

Warranty does not apply if the product is damaged due to physical abuse, mishandling, accident, fire, frostbite, water damage, negligence or failure to follow the supplied operating instructions. For more information on warranty, see:
driftinnovation.com/warranty

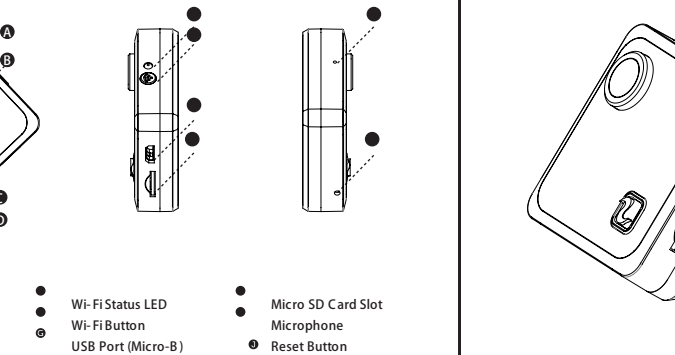
contents

package contents about your camera	3—4
initial setup getting started	5—6
using the camera using the standard clip	7—8
mode selection settings	9—10
connecting to Foream Connect App Wi-Fi	11—12
connecting the camera specifications	13—14
accessory guide	15—16
disclosures	17—18
	19—21

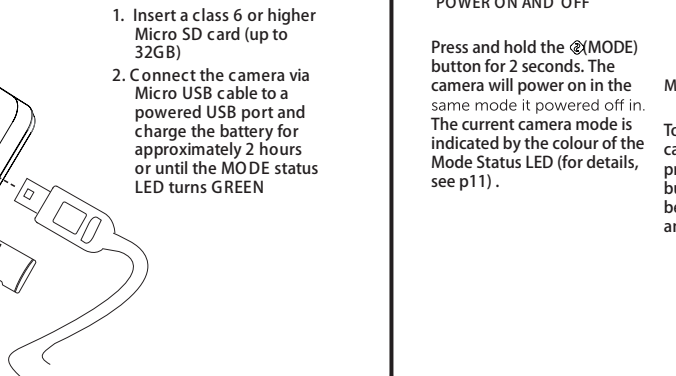
inside the box



about your compass



initial setup



1. Insert a class 6 or higher Micro SD card (up to 32GB)
2. Connect the camera via Micro USB cable to a powered USB port and charge the battery for approximately 2 hours or until the MODE status LED turns GREEN

getting started

POWER ON AND OFF

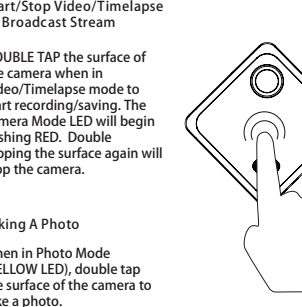
Press and hold the **(MODE)** button for 2 seconds. The camera will power on in the same mode it powered off in. The current camera mode is indicated by the colour of the Mode Status LED (for details, see p11).

MODE NAVIGATION

To change the current camera recording mode press the **(MODE)** button once. Changing between Video, Photo and Timelapse.

MODE SETTINGS

To change the camera settings from their default values, you must use the Foream Connect App (for details, see p13).



using the camera

Orientating the Camera UP

Always ensure the Camera lens is on top of the camera to ensure video and image capture is right side up. To stand the camera on a flat surface, clip on a shirt or strap use the STANDARD CLIP.



Start/Stop Video/Timelapse or Broadcast Stream

DOUBLE TAP the surface of the camera when in Video/Timelapse mode to start recording/saving. The camera Mode LED will begin flashing RED. Double tapping the surface again will stop the camera.



Taking A Photo

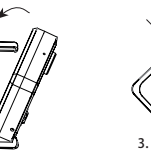
When in Photo Mode (YELLOW LED), double tap the surface of the camera to take a photo.



using the standard clip

Inserting the camera

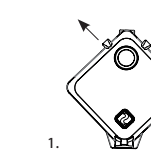
1. Put the camera into the base of the clip first
2. Pivot the camera towards the clip body
3. Ensure the clip arms are extended over the camera edge securely.



using the standard clip

Releasing the camera

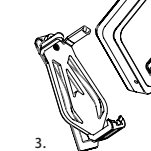
1. Push the clip upper arms gently over the camera edge.
2. Pivot the camera away from the clip body.
3. Pull the camera off the clip base.



using the standard clip

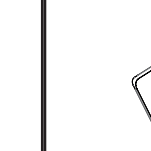
Rotating the camera in the clip

The camera can be used in the clip in any orientation needed to ensure the camera lens is always on top regardless of which direction is accessible for clipping.



Using the lanyard

Simply slide the lanyard loop over the standard clip to securely store and hang the camera around your neck.



FCC Caution:

Any Changes or modifications not expressly approved by the party responsible for compliance could void the user's authority to operate the equipment.

This device complies with part 15 of the FCC Rules. Operation is subject to the following two conditions: (1) This device may not cause harmful interference, and (2) this device must accept any interference received, including interference that may cause undesired operation.

Note: This equipment has been tested and found to comply with the limits for a Class B digital device, pursuant to part 15 of the FCC Rules. These limits are designed to provide reasonable protection against harmful interference in a residential installation. This equipment generates, uses and can radiate radio frequency energy and, if not installed and used in accordance with the instructions, may cause harmful interference to radio communications. However, there is no guarantee that interference will not occur in a particular installation. If this equipment does cause harmful interference to radio or television reception, which can be determined by turning the equipment off and on, the user is encouraged to try to correct the interference by one or more of the following measures:

- Reorient or relocate the receiving antenna.
- Increase the separation between the equipment and receiver.
- Connect the equipment into an outlet on a circuit different from that to which the receiver is connected.
- Consult the dealer or an experienced radio/TV technician for help.

This equipment complies with FCC RF exposure guidelines. This transmitter must not be co-located or operating in conjunction with any other antenna or transmitter.