

## **一、 Introduction**

### **1. 1 Product introduction**

USB Flash Disk new developed mobile storage devices. User can exchange and storage any data between computers. The USB Flash Disk uses Flash memory as storage media and connecting to computer via USB port. While the USB Flash Disk is plugged in the USB port, the Disk can be used as a floppy or a hard disk. The flash memory can be re-used for more than 1,000,000 times and data can be preserved more than 10 years. The operation speed is faster than floppy driver for more than 15 times. The capacity of the USB Flash Disk can be expanded to 256 MB, 512MB maybe 2 GB in the future. The USB Flash Disk is driverless in Microsoft Windows Me/2000/XP. Highly compatibility between different operation systems.

### **1. 2 Product performance and marks**

- Huge capacity (8MB/16MB/32MB/64MB/128MB/256MB/384MB/512M/768MB/1GB)
- USB 1.1 compliant, supporting hot PnP
- No auxiliary power supply necessary, powered by USB bus directly
- Built-in write protect switch, protect data from delete and virus attack
- Read Speed: 900KB/S, Write Speed: 600KB/S
- Data can be preserved more than 10 years
- Storage media: Flash Memory
- Compact size
- Light weight: less than 20 g
- No Driver necessary in Windows ME/2000/XP, Mac OS 9.x, Linux Kernel 2.4x operation system.

### **1. 3 Product characteristics**

#### **1. 3. 1 Computer System requirement**

- IBM compliant PC or Notebook with USB support

#### **1. 3. 2 Operating system requirement**

- Windows 98SE
- Windows ME
- Windows 2000
- Windows XP
- Mac OS 9.x
- Linux Kernel 2.4x

#### **1. 3. 3 Advance features**

- Bootable function

#### **1. 3. 4 Technical parameters**

- Storage capacity 8MB~2GB
- Re-use times > 1,000,000 times
- Speed Read: 900KB/S Write: 600KB/S

- Connection port USB

## 二、Driver installation

### 2.1 Hardware and software installation

- 1) Turn on the write protect switch on the USB Flash Disk before use. According to the indicating figure, the "Key" means writable and the "Lock" stands for write-protect.
- 2) Startup the Windows 98SE and put the floppy with driver into the floppy driver.
- 3) Plug the USB Flash Disk into the system. Because of the PnP function, a new device will be found by the system. A "new device found" message shown and press "next" to continue. (Fig.2.1)

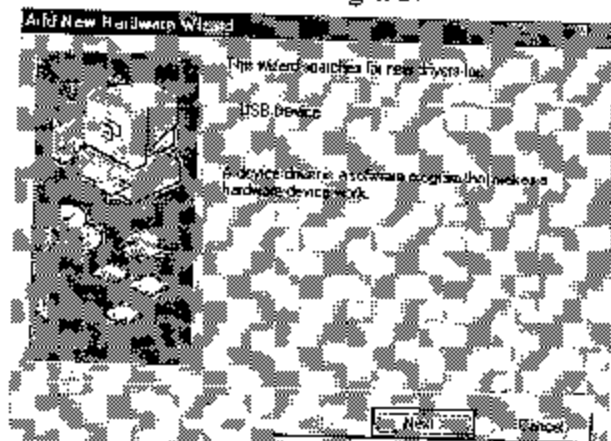


Fig.2.1

- 4) System prompts for user to choose where to provide the driver. Choose the recommended one and press "next". (Fig.2.2)

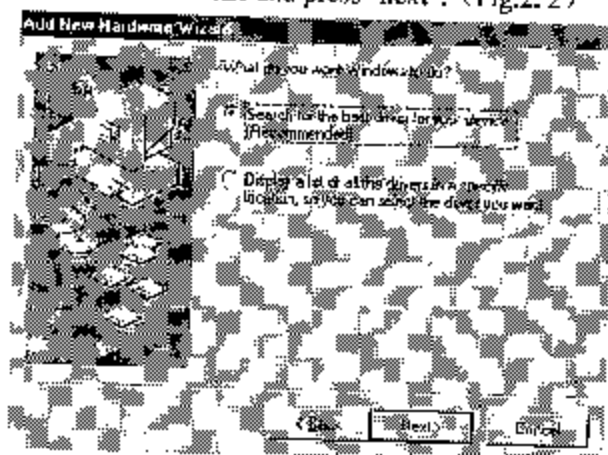


Fig.2.2

- 5) Prompting where to find the driver. Press "Browse" and press "next". (Fig.2.3)

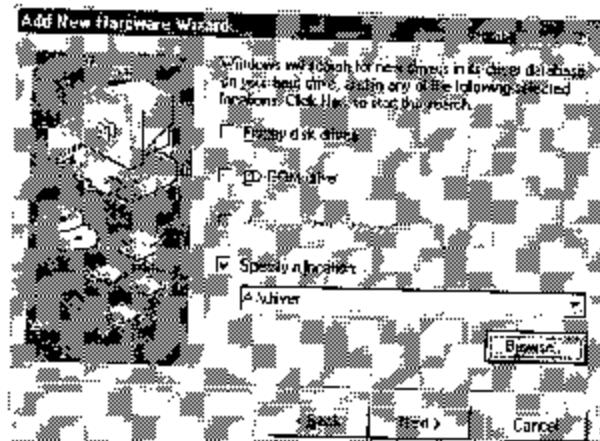


Fig.2. 3

6) The "USB Flash Disk Controller" driver will be found. Please press "next", (Fig.2. 4)

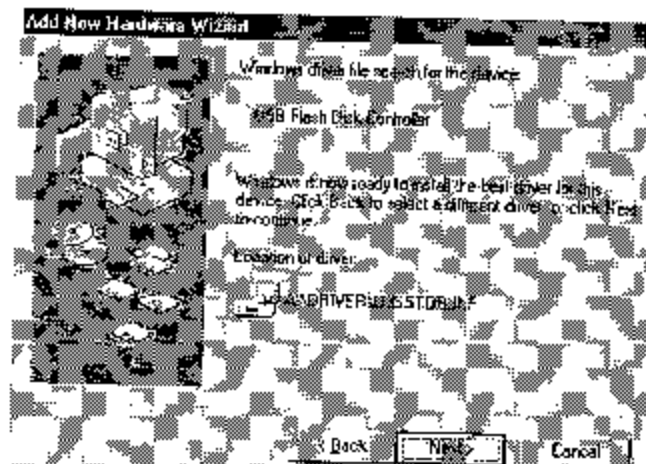


Fig.2. 4

7) Click "Finish" to finish the driver installation. (Fig.2. 5)

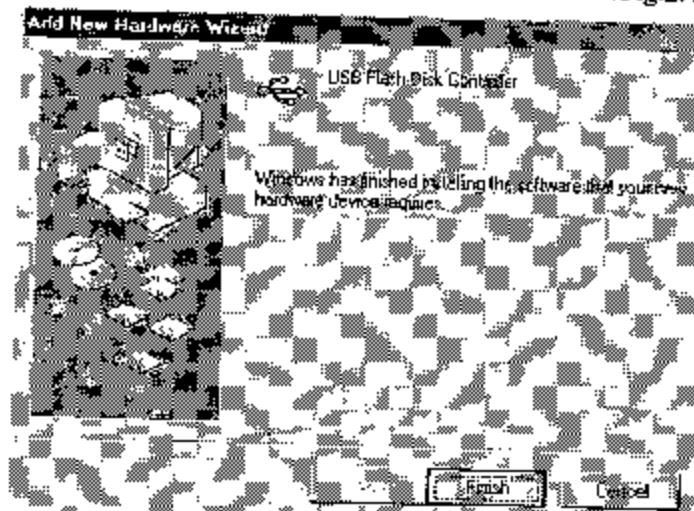


Fig.2. 5

8) Please re-start the computer before you use the USB Flash Disk

## 2.2 Bootable Function

USB Flash Disk provides the unique bootable function. You can use the USB Flash Disk as a startup disk for your PC to boot the system. But the BIOS on the main board must support the “USB-HDD” boot up feature.

Steps are as follow:

- 1) After plug the USB Flash Disk into the computer run the file “mFormat.exe”. Then select the “Bootable” item. Picture are as follow:(Fig.2. 6)

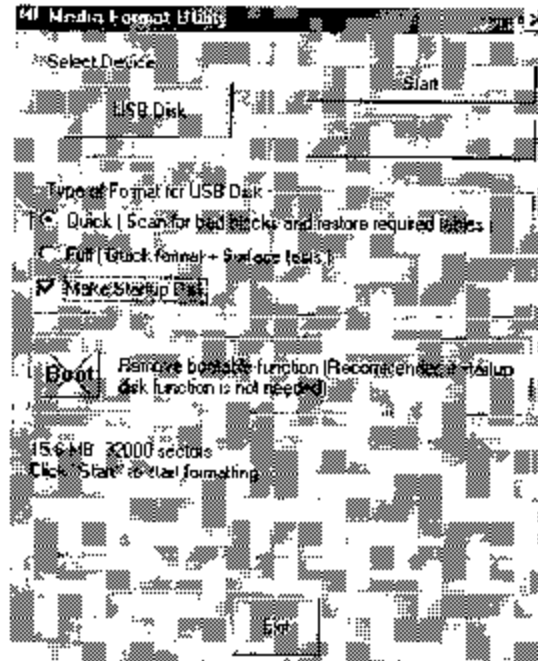


Fig.2. 6

- 2) Click “Start”. Picture 2.7 shown then press “OK” to process formatting.



Fig.2. 7

- 3) After format finished, it will enter “制作启动盘” windows. Follow the instructions, pull out the USB Flash Disk and wait for 5 seconds press “OK”. As Fig.2. 8 shown:



Fig.2. 8

- 4) Follow the instructions plug in the USB Flash Disk waiting for 5 seconds then press “OK”. As Fig. 2. 9 shown:



Fig.2. 9

5) After the files copied the startup disk is ready. As Fig.2. 10 shown:

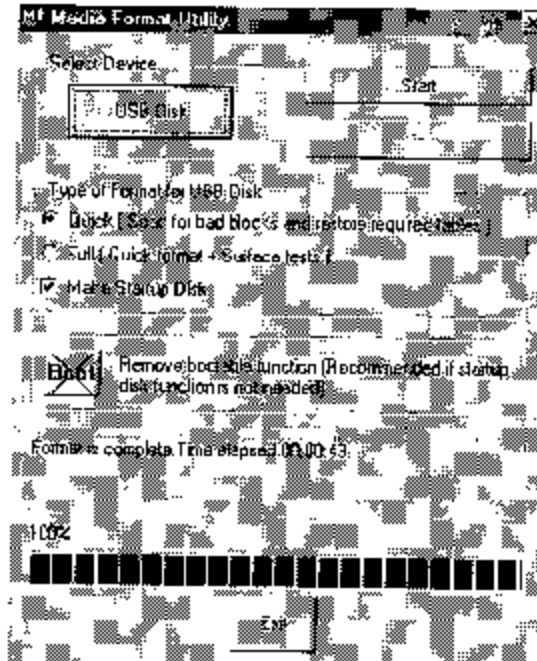


Fig.2. 10

#### Bootable function notices:

- Only BIOS on main board supports the USB-HDD can be used to boot the system via the USB Flash Disk.
- Using the USB Flash Disk to boot the machine needs to set "USB-HDD" items into the boot sequence in BIOS.
- Only in Windows 98SE supports for making startup disk.

#### 2.3 Software un-installation

1) Double click the "uninstall" in the USB Flash Disk Windows 98SE driver. Picture Fig.2. 11 shown.



Fig.2. 11

2) Press "Uninstall" to uninstall the driver. Picture 2. 12 shown.

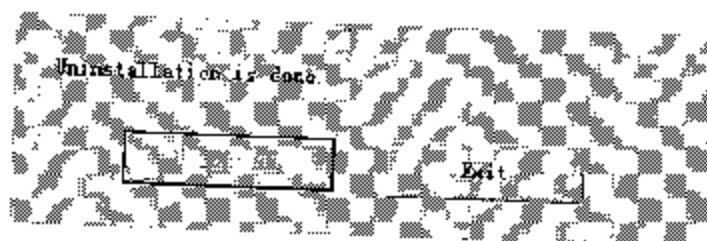


Fig 2. 12

### 三、How to use the USB Flash Disk

It is very easy to use the USB Flash Disk. The follow description describes how to use the USB Flash Disk in Windows ME/2000/XP operation system.

3. 1) Turn on your computer.

3. 2) Connect the USB Flash Disk with USB on the computer. There is a disk prompt shown if the connection is ok. In Windows 2000/XP the volume label will be "Local disk". It will take longer in the first time.

There is a small icon shown in the right corner after the USB Flash Disk plugged in. (Fig.3. 1)



Fig.3. 1

3. 3) Afterward you can treat the USB Flash Disk as a normal hard disk to copy, delete, move files. The indicator on the USB Flash Disk will blinking while there is a write or read action processing.

3. 4) While you are going to plug the USB Flash Disk out please follow the steps:

**Windows 98SE:** As long the indicator of the USB Flash Disk stops, user can pull out the disk.

**Windows ME/2000/XP:** You must use mouse to left click the icon in the right corner on the screen. There is a command item shown. Click it! There is windows shown to inform user that you can remove the device safe now.

### 四、FAQs

1. *After the installation is complete, why can't I find the USB device correctly?*

答: Check the USB Controller item in BIOS, enable it.

2. *What is the purpose of the indicator?*

答: While the indicating light is blinking means that the device is busy otherwise it is stand by.

3. *Can I pull the device out while the indicating light is on?*

答: NO!!!! If you do so, it might cause the data damaged. But there is no harm in hardware.

4. *Can I use the "scandisk" command in windows to scan the USB Flash Disk?*

答: Yes!

### 五、Notes

1. The driver is for Windows 98SE only no driver needed in Windows ME/2000/XP, Mac OS 9.x/Mac OS X, Linux Kernel 2.4.

2. The "making startup disk" item in the enclosed application is only available in

Windows 98SE.

3. Make sure that the indicating light is off to plug out the USB Flash Disk.

※It must be off line to switch the write protect switch.