

**USB Bluetooth/Flash Disk**

**User's manual**

**V1.0**

## **Content**

### **1. Introduction**

#### **1.1 USB Bluetooth/Flash Disk**

#### **1.2 What's in the box?**

#### **1.3 Function**

#### **1.4 Specification**

#### **1.5 System requirements**

### **2. Installation**

#### **2.1    Install   “BlueManager”    and   “USB Bluetooth/Flash Disk”**

### **3. Regarding manual of USB Bluetooth/Flash Disk**

## **1. Introduction**

### **1.1 USB Bluetooth/Flash Disk**

Thank you for purchasing USB Bluetooth/Flash Disk that is the solution for the seamless integration of Bluetooth technology and portable mass storage into one device. It utilizes short-distance radio link technology, replaces the traditional cable connections to enable wireless connections between desktop and laptop computers, cellular phones, scanners, digital cameras, printers, and other devices. You can now easily transfer files between two computers, dial up to the Internet using the host computer's modem or a cell phone, or even share a network connection without literally attaching your cables to a device.

USB Bluetooth/Flash Disk is a portable USB hard drive used store and transport data safely and easily between computers through USB interface.

Installation of the USB Bluetooth/Flash Disk is easy.

This user's guide will guide you through the process of making wireless connection between your devices.

### **1.2 What's in the box?**

Check if the following items are included in the package. If there are any items missing, please contact your dealer.

- Bluetooth USB adapter
- USB extension cable
- Use's manual
- Driver CD

### **1.3 Function**

- Automatic discovery another Bluetooth device's resources and services.
- File transfer: Transfer file from one Bluetooth device to another.
- Wireless device synchronization: Exchange information among computers, mobile phones and PDAs.

- Dial-up networking: Access Internet wirelessly through a modem on another Bluetooth device or a cellular phone.
- Bluetooth Serial Port: Establishes a Bluetooth wireless connection between two devices.
- LAN Access: Allow Bluetooth-enabled devices to access the services of a LAN using Point-to-Point Protocol
- Mass storage device: Store data to integrated Flash memory through USB interface.

#### **1.4 Specification**

- Compliant with the Bluetooth™ V1.1 specification, Class 2
- Fully Bluetooth™ Version 1.1 qualified
- Powered by USB bus directly
- Full speed USB interface, compliant with USB 1.1
- LED indicator when the device is in use.
- Built-in Antenna

- Frequency band: 2.4GHZ ISM band
- Maximum data rate: 1Mbps
- 10 meter working distance
- Integrated Flash memory (32MB~512MB)
- Read and Write Speed: Read: 1.1MB/S; Write: 700KB/S
- Support Windows98SE/2000/ME/XP operating system or higher

### **1.5 System requirements**

- IBM PC or compatible PC with USB port;
- Notebook or laptop;
- Windows 98/Me/2000/XP。

## **2. Installation**

**(Attention: You need to install the BlueManager Software before plugging in the USB Bluetooth/Flash Disk)**

## 2.1    Install    “BlueManager”    and    “USB Bluetooth/Flash Disk”

1. Insert the driver CD and run “BlueManager.exe”  
then the following picture will show up on your desktop:

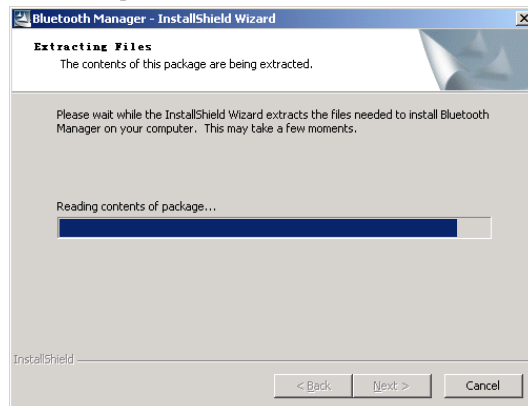


Fig-1

2. System will install software automatically;
3. In the dialog of “License Agreement” please

click [Yes];

4. In the dialog of “ Choose Destination Location” , select directory of files and click [Next];

5. In the dialog of “Select Program Folder”, click [Next];

During installation, some system prompts out warning message as below Fig-2. (Because Bluetooth is not a standard built-in device on most operation system yet. Please click “[Continue ( C ) ] till pass authentication)



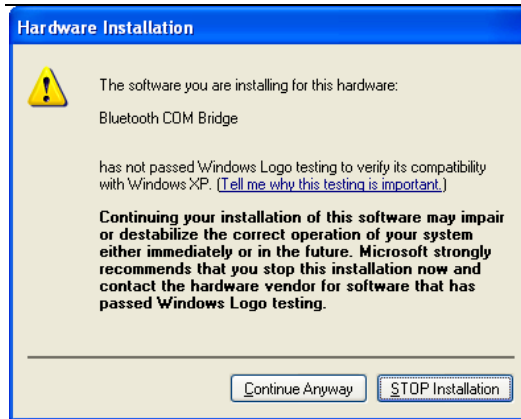


Fig-2

6. Then system will prompt to reboot computer. Please select [Yes, I want to restart my computer now..], and finish to reboot computer.

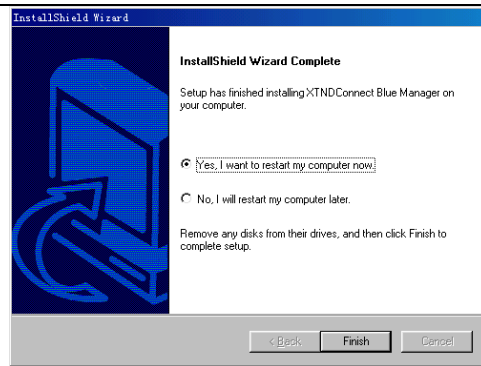


Fig-3

7. After rebooting, system will run “Blue manager” automatically.
8. Then please insert “ USB Bluetooth/Flash Disk” into USB port, and system will find new hardware and install its driver automatically

**(Attention:**

1. If your system is Windows XP, please select [Install automatically (Recommend)(I)] from dialog of “Find New Hardware

**Wizard” ; Click Next to install automatically. Refer to Fig-4)**

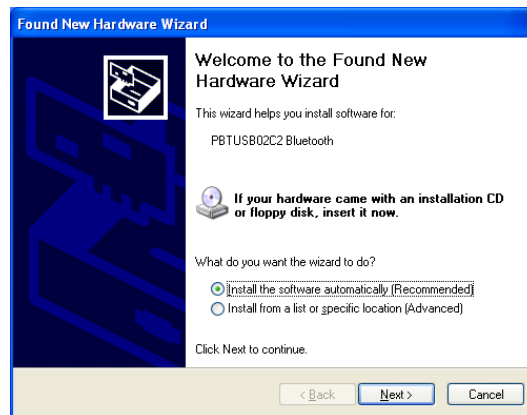


Fig-4

2. If your system is Windows98, the system will find new mass storage device, please cancel it then run “ufddriver/setup. exe” in driver CD to install the mass storage device’s driver )
9. After completed BlueManager installation.

You will find LED of device will flash;  
There are series of Bluetooth virtual added  
in computer hardware; “Bluetooth LAN  
Connection Client” and “GPRS Bluetooth  
Connection” are created in network  
connection; Shortcut of “BlueManager” and  
“GPRS Bluetooth connection.”

### **3. Regarding manual of USB Bluetooth/Flash Disk**

Application range of USB Bluetooth/Flash Disk  
includes:

- 1、Use USB Bluetooth/Flash Disk to fulfill  
wireless connecting between PC and  
Bluetooth cell phone.
- 2、Use USB Bluetooth/Flash Disk to fulfill  
wireless connecting between two PCs,  
exchanging data and sharing Internet and so  
on.
- 3、Use USB Bluetooth/Flash Disk to fulfill

wireless connecting with other Bluetooth devices, such as Bluetooth printer.

Please read “Application Guide” in CD about operation of above functions. Regarding the connection and operation with other Bluetooth device, please refer to manual of other Bluetooth devices.

**Caution:**

Any changes or modifications not expressly approved by the party responsible for compliance will void the user's authority to operate the equipment.

**Note:**

This equipment has been tested and found to comply with the

limits for a Class B digital device, pursuant to part 15 of the FCC

Rules. These limits are designed to provide reasonable protection

against harmful interference in a residential installation. This

equipment generates, uses and can radiate radio frequency energy and, if not installed and used in accordance with the instructions, may cause harmful interference to radio communications.

However, there is no guarantee that interference will not occur in a particular installation.

If this equipment does cause harmful interference to radio or television reception, which can be determined by turning the equipment off and on, the user is encouraged to try to correct the interference by one or more of the following measures:

- Reorient or relocate the receiving antenna.
- Increase the separation between the equipment and receiver.
- Connect the equipment into an outlet on a circuit different from that

to which the receiver is connected.

--Consult the dealer or an experienced radio/TV technician for help.

This device complies with Part 15 of the FCC Rules.

Operation is subject to the following two conditions:

(1) this device may not cause harmful interference, and (2) this device must accept any interference received, including interference that may cause undesired operation.”

---