

RF Receiving Station – For Windows

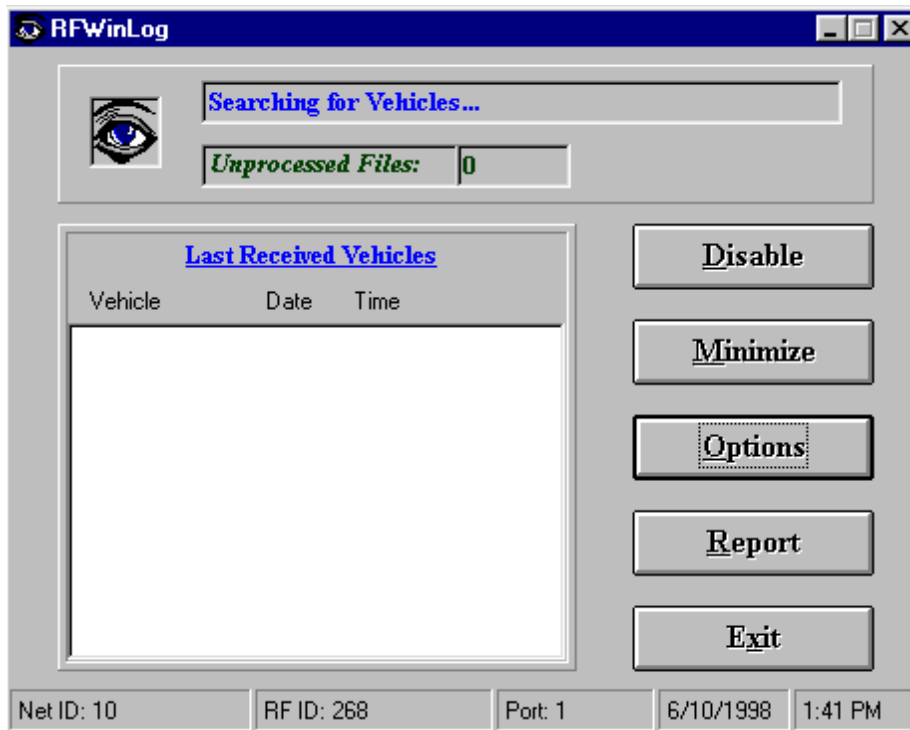
Installing the software:

1. Insert 'Disk1' Choose 'Start' and 'Run' and run 'Setup.exe'. Follow the installation steps and complete the installation by using the default parameters or enter different parameters to install the software in a different location.
2. To run the software. Make sure to connect the RF Modem unit to one of the PC COM Ports and plug the power supply to the RF Modem. Choose 'Run', 'Program Files' and run the 'WRFLog' application.

Using the software:

1. When running the software it will try to identify the RF Modem unit. On a success configuration you will get a blue or green eye on the screen. On fail you will get an Error message and a red eye on the screen.

'Main' Application form:



- The eye picture: Blue – Searching for vehicles and no new files to import. Green – Searching for vehicles and there are new files to import. Red – Can't get the RF Modem unit ID and not searching for vehicles.
- Upper message line - The program status messages.
- Unprocessed Files - Number of new files in the INPUT directory.

- Last received vehicles window - Show the last received vehicles ID number and the receiving date and time.
 - 'Disable / Enable' button - To stop / start the receiving process from vehicles.
 - 'Minimize' button - To minimize the window into the Start bar.
 - 'Options' button - Open the Option form to change the configuration setup.
 - 'Report' button - Show report for all the receiving vehicles in this station that includes date, time, last vehicle odometer and if the vehicle odometer is not running.
 - 'Exit' - Quit the application.
2. To change the software configuration setup. Choose 'Options' and enter the following configuration:

'Options' application form:

Options

RF Setup

Port Number (1-4):

Net Number:

☐ RF Sensor Connected

Cancel

OK

About

RF Update

☒ Update Time & Date Every Day(s)

☒ Send Update's From File Path:

RF Data Files

Main Data Files Path:

☒ Create Data Files For Local Computer

☐ Create Data Files For Remote Computer

Enter the 'WinCar' path for the Update.MDB file (C:\WinCar).

- Port Number - The COM Port number where the RF Modem unit is connected to the PC.
- Net Number - The RF Network number for the Vehicles receiving station.

- RF Sensor connected - If the RF Modem unit is connected to an external sensor to be activate, check this box else live it empty (Default).
 - Update time & date - The application can update the Vehicles clock every given day(s) by the RF Modem.
 - Send update's - To send Permission codes updates to the vehicles by the RF Modem.
 - Main Data files path - The main directory where you want the Input files to be saved after downloading from the vehicles. Under this directory the application will create directories for each type of downloading files (INPUT, LAST5MIN, FUELLOG...).
 - Create Data files for local computer - This option will save the downloaded data in the current computer for local use.
 - Create Data files for Remote computer - This will save the downloaded files for transferring them to another Host computer.
3. This application can run in the background. It means that if you received new vehicles data you can run the Database application and process the input files while this application continues to run.