

# MRW-6030 Manual (Ver 0.0.1)

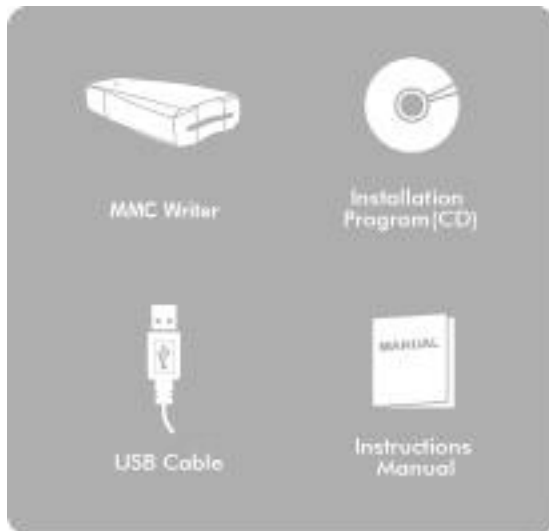
## Specification

USB Controller : GDS30C6001 (HYUNDAI)

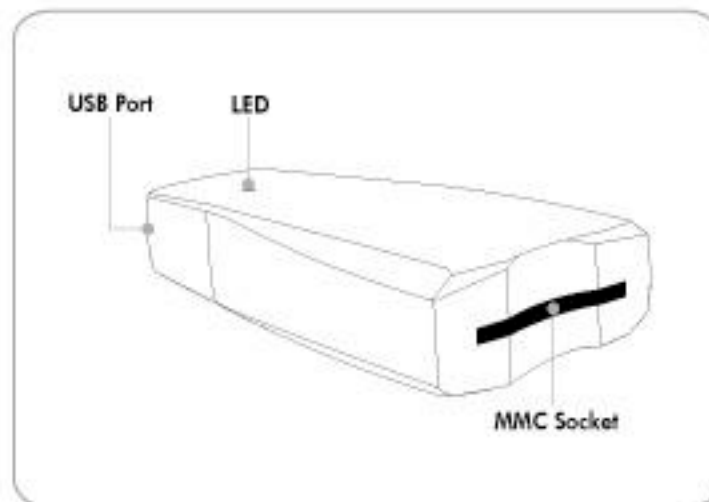
File Downloading Speed : 130Kbytes/sec

Dimension : 68.9mm(W) X 37.1mm(H) X 15.3mm(D)

## Unit Contents



## Designations



**INFORMATION TO THE USER (Part 15, Section 15.105(b))**

**INFORMATION TO THE USER**

Τησ εθυιπιεντ ηασ βεεν τεστεδ ανδ φουνδ το χομπλψ ωιτη τηε λιμιτσ φορ α Χλασσ Β διγιταλ δεσικε, πυρσυαντ το παρτ 15 οφ τηε ΦΧΧ Ρυλεσ. Τηεσε λιμιτσ αρε δεσιγνεδ το προωιδε ρεασοναβλε προτεχιον αγαινστ ηαρμφυλ ιντερφερενχε ιν α ρεσιδεντιαλ ινσταλλατιον. Τηισ εθυιπιεντ γενερατεσ, υσεσ ανδ χαν ραδιατε ραδιο φρεθυενχψ ενεργψ ανδ, ιφ νοτ ινσταλλεδ ανδ υσεδ ιν αχχορδανχε ωιτη τηε ινστρυχιονσ, μαψ χανσε ηαρμφυλ ιντερφερενχε το ραδιο χομμυνιχατιονσ. Ηωεωερ, τηερε ισ νο γυαραντεε τηατ ιντερφερενχε ωιλλ νοτ οχχυρ ιν α παρτιχυλαρ ινσταλλατιον. Ιφ τηισ εθυιπιεντ δοεσ χανσε ηαρμφυλ ιντερφερενχε το ραδιο ορ τελεωισιον ρεχεπιον, ωηιχη χαν βε δετερμινεδ βψ τυρνινγ τηε εθυιπιεντ οφφ ανδ ον, τηε υσερ ισ ενχουραγεδ το τρψ το χορρεχτ τηε ιντερφερενχε βψ ονε μορε οφ τηε φολλοωινγ μεασυρεσ:

Ρεοριεντ ορ ρελοχατε τηε ρεχειωινγ αντεννα.

Ινχρεασε τηε σεπαρατιον βετωεεν τηε εθυιπιεντ ανδ ρεχειωερ.

Χοννεχτ τηε εθυιπιεντ ιντο αν ουτλετ ον α χιρχυιτ διφφερεντ φορμ τηατ το ωηιχη τηε ρεχειωερ ισ χοννεχτεδ.

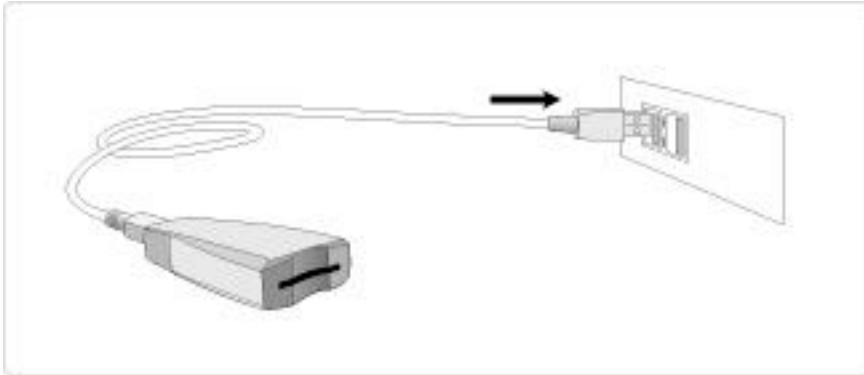
Χονσυλτ τηε δεαλερ ορ αν εξπεριενχεδ ραδιο/Τς τεχνηνιχιαν φορ ηελπ.

**WARNING (Part 15, Section 15.21)**

Χηανγεσ ορ μοδιφιχατιονσ νοτ εξπρεσσυη αππροωεδ βψ τηε παρτυ ρεσπονσιβλε φορ χομπλιανχε χουλδ ωοιδε τηε υσερ'σ αυτηοριτυ το οπερατε τηε εθυιπιεντ.

## Connecting to PC (Writer connection method)

- 1) Connect MMC Writer to the USB port.



- 2) Moment after, a message is shown to say that it found device. Here, click the “Next>” to begin driver installation.
- 3) Select ‘the search for driver that is appropriate to the device(recommend)’ and click “Next>”

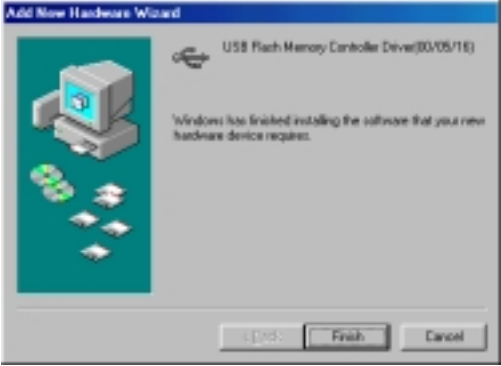


button.

- 4) This is a window to designate the driver location.
  - After checking as shown in the picture, click the “ (R)” button to designate the location and click the “Confirm” button.
  - After designating the path, click on the “Confirm” button.
  - The next picture is the window of after designating of location. Click the “Next>” button.
- 5) When the “Next>” button is clicked, driver installation begins.



- 6) After the installation, the following device name appears.  
When clicking the “Complete” button, the drive installation is completed.

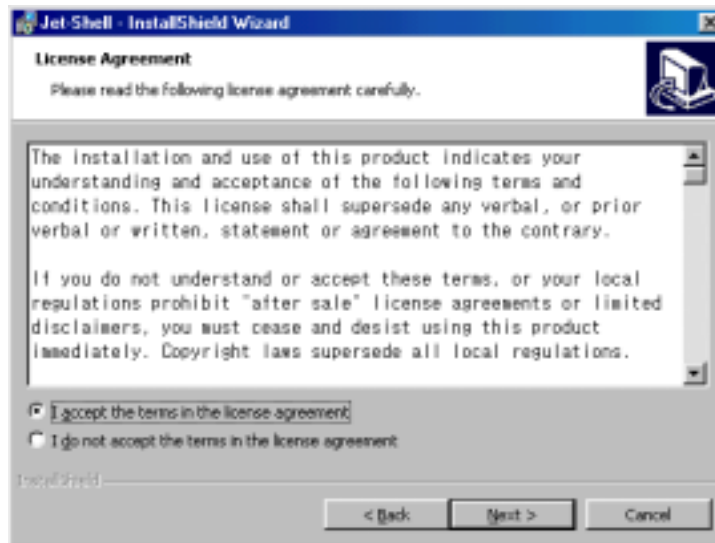


## Program Installation

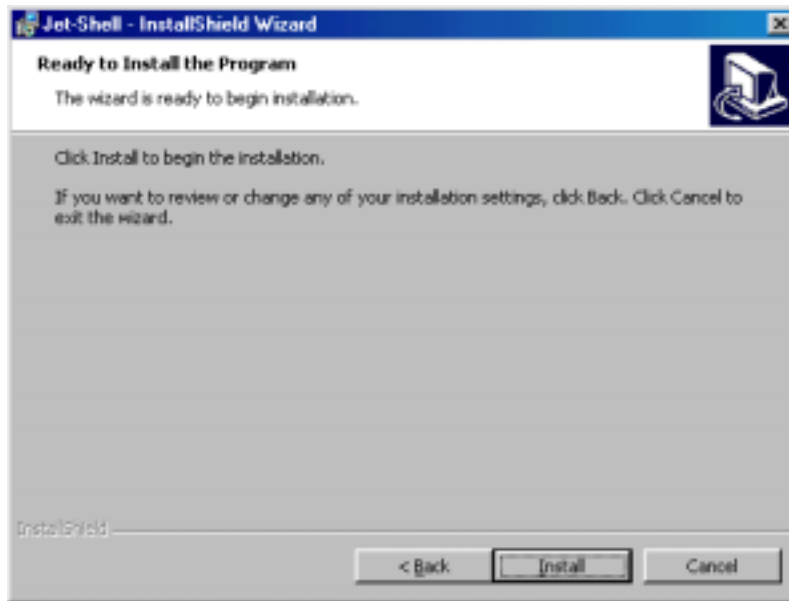
- 1) Execute Setup.exe.
- 2) Press the "Next (N)>" button.



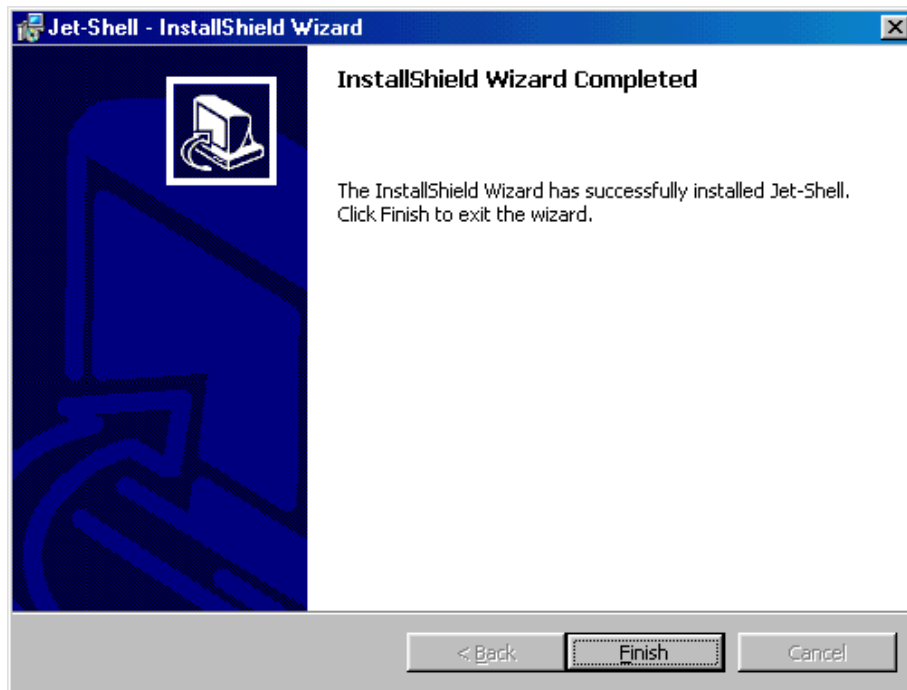
- 3) After selecting "I accept the terms in the license agreement", press the "Next>" button.



- 4) This is a window to designate the folder to be installed.  
Press the "Change" button only when changing the folder, after change the folder and press the "Next>" button. And when not changing, press the "Next>" button to go to the next.
- 5) Message to begin "Install" appears.  
When pressing the "Install" button, the installation begins.



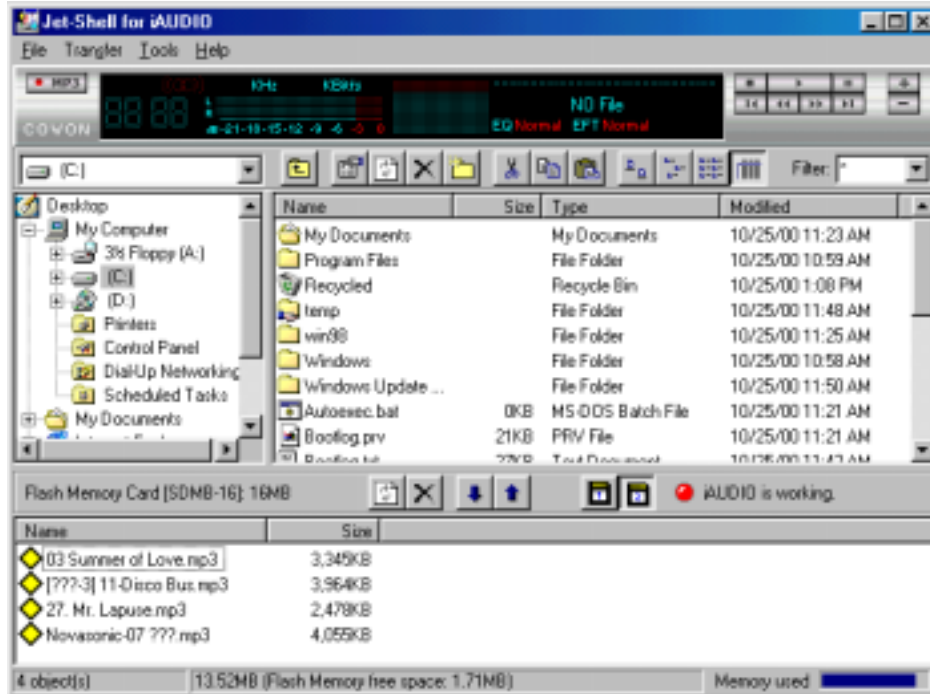
6) When installation is completed, press the "Finish" button to complete the installation.



## Program Use Method

When program is executed, the following picture appears.

After inserting the MMC card into Writer, press No.2 button.



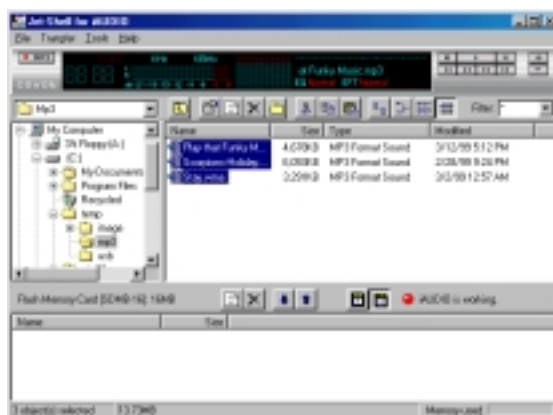
### - Download (File copy from PC to MMC)

1) Set-Shell is executed at [Begin]-[Program (P)]-[cowon]-[Jet-Shell].

\*Click No.2 button when executing the program.

2) Insert MMC card into Writer.

3) After selecting the desired file, press "↵" button.



### - Upload (File copy from MMC to PC)

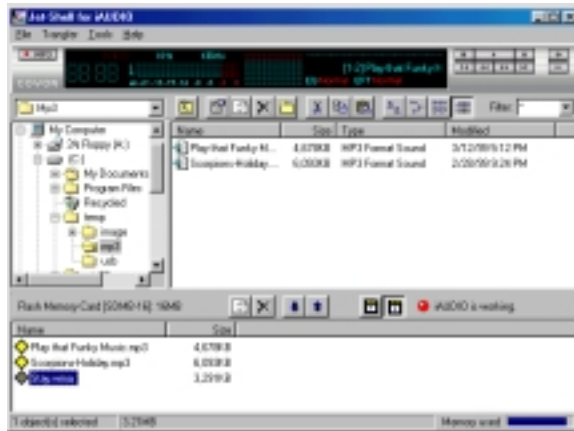
<Upload function is not supported only when the expanding is MP3>

1) Set-Shell is executed at [Begin]-[Program (P)]-[cowon]-[Jet-Shell].

\*Click No.2 button when executing the program.

2) Insert MMC into Writer.

3) After selecting the desired file, press " X " button.



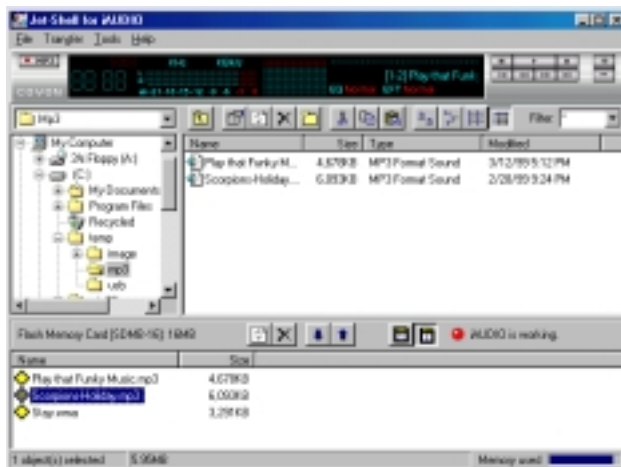
**- Delete the file from MMC card**

1) Set-Shell is executed at [Begin]-[Program (P)]-[cowon]-[Jet-Shell].

\*Click No.2 button when executing the program.

2) Insert MMC card into Writer.

3) After selecting the desired file, press " X " button.



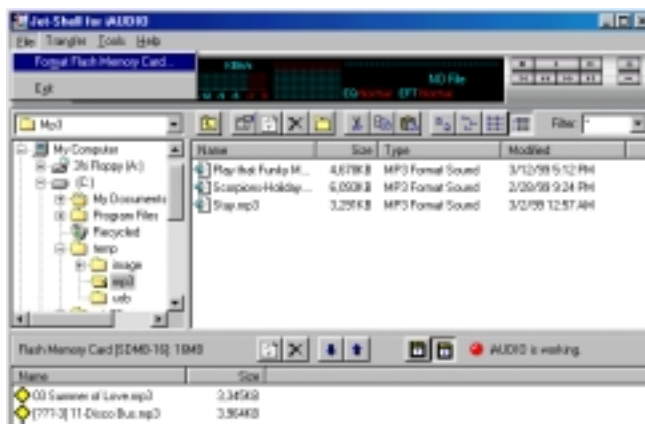
**- MMC Card Format**

1) Set-Shell is executed at [Begin]-[Program (P)]-[cowon]-[Jet-Shell].

\*Click No.2 button when executing the program.

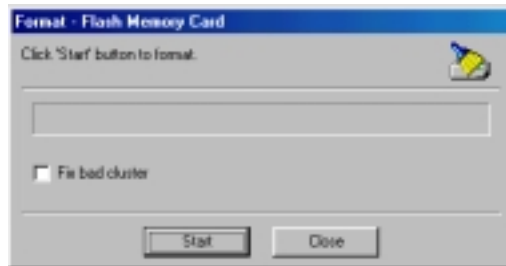
2) Insert MMC into Writer.

3) Select "File"- "Format Flash Memory Card " from Menu.





4) When talk box is shown, press the "Start" button.



5) When work is complete, press the "Close" button.