

Table of Contents

Before Use

| | |
|---------------------|---|
| About DMP-2010L | 2 |
| System Requirement | 2 |
| Features | 2 |
| Package Contents | 3 |
| Parts and Controls | 4 |
| Overall View of LCD | 5 |
| Getting Started | 6 |

How to use

| | |
|-----------------------------------|----|
| Program Installation | |
| MMC Toaster Program Installation | 7 |
| USB Driver Installation | 8 |
| Using Program | |
| Download (PC -> MMC/Flash Memory) | 12 |
| Upload (MMC/Flash Memory -> PC) | 13 |
| Music File Deletion | 14 |
| Flash Memory/MMC format | 15 |
| Program Uninstallation | 16 |
| How to use DMP-2010L | |
| Basic Operations | 17 |
| How to Use Mode button | 21 |
| Additional Operations | 23 |

Additional Information

| | |
|-----------------------|----|
| Precautions | 26 |
| Troubleshooting | 27 |
| Related Information | 36 |
| Product Specification | 37 |
| | 38 |
| | 39 |

DMP-2010L is a MP3 player developed by Openers Co., Ltd., which has built-in flash memory and offers easy connection to PC through USB port. Also, two additional MMC slots make possible memory extension. With its large LCD screen, easy and convenient information display is available. Moreover, users can use optional external FM Radio.

System Requirement

1. Pentium 75MHz or higher
2. RAM 16MB or above
3. 2X CD-ROM Drive or above
4. HDD 30MB or more space
5. Windows 95 (OSR2)/98/2000
6. USB port

Features

1. Large LCD
2. Music information display (ID3, TAG)
3. Easy connection to PC through USB port
4. Various audio playback capability
5. User name display
6. Repeat play function
7. External FM Radio connection
8. Quick Search Music & Text file view function
9. Last playing state save function

Package Contents

Before Use



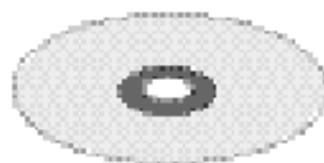
DMP-2010L player



Earphone



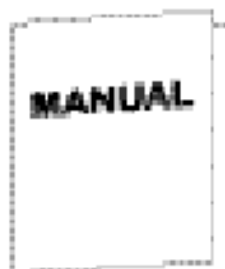
USB Cable



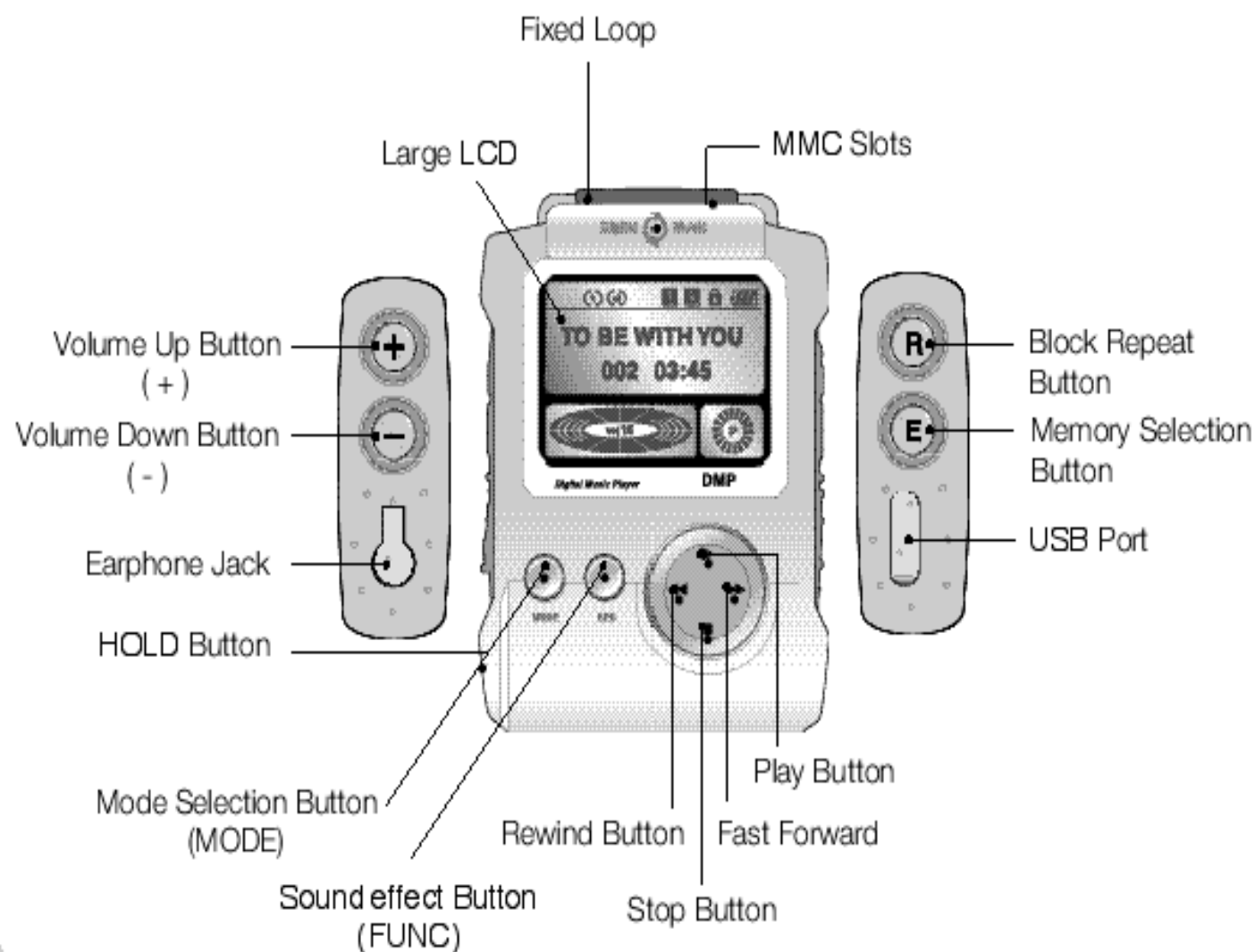
Installation Program (CD)



AAA batteries

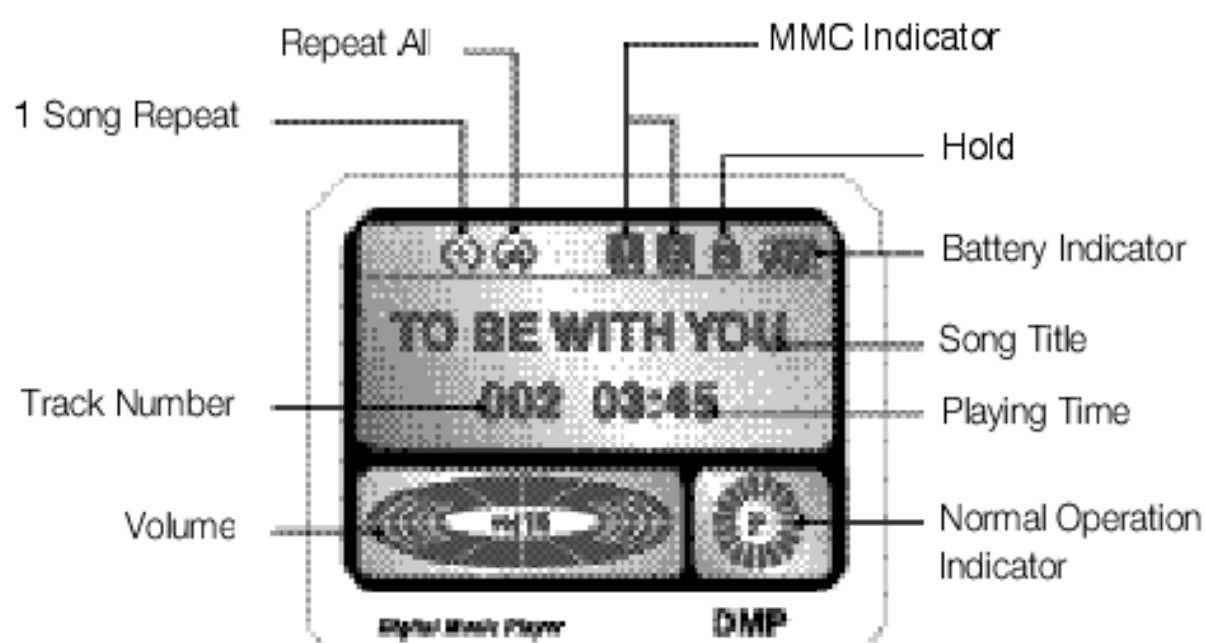


Manual



Overall View of LCD

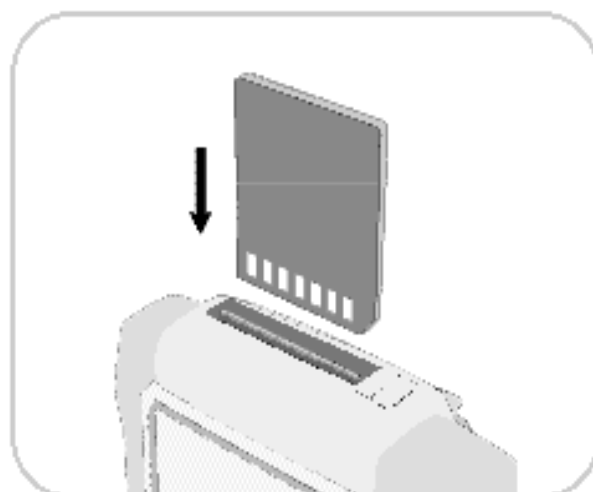
Before Use



● Inserting Multimedia Card

Insert the side forward whose pins are shown.

To remove MMC, push the button on the right side of the slot

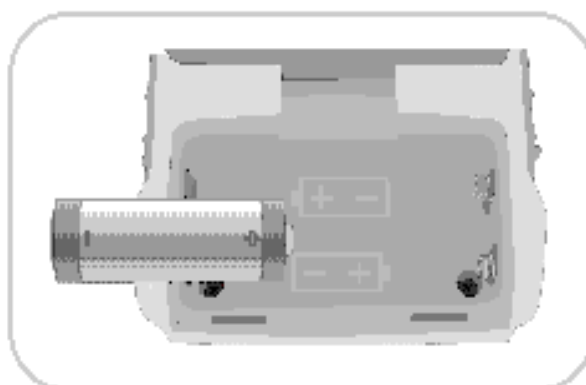


● Check this point - Music file downloading

When downloading music files into MMC, leave just one MMC at the slots.

● Inserting the battery

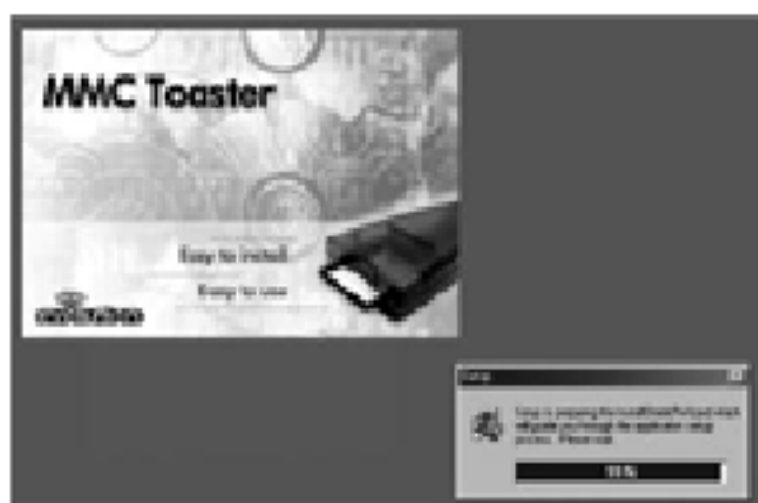
After open the battery lid, insert two 'AAA' batteries with correct polarity.



● MMC Toaster program installation

► Carry out following steps without connecting USB cable to PC.

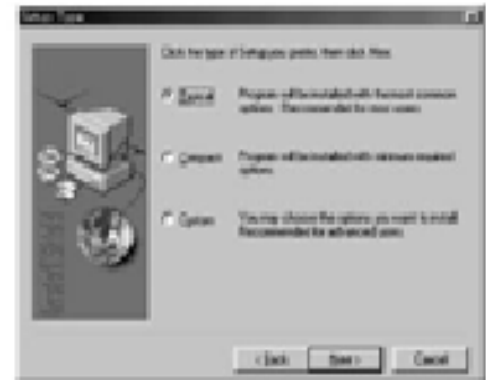
- 1) Place the software CD in your CD-ROM drive. After a few seconds, the setup screen displays.



- 2) Press the "Next>" button.



3) Press the "Next>" button.



4) Press the "Next>" button.



5-1) The installation is completed by pressing the "Finish" button.



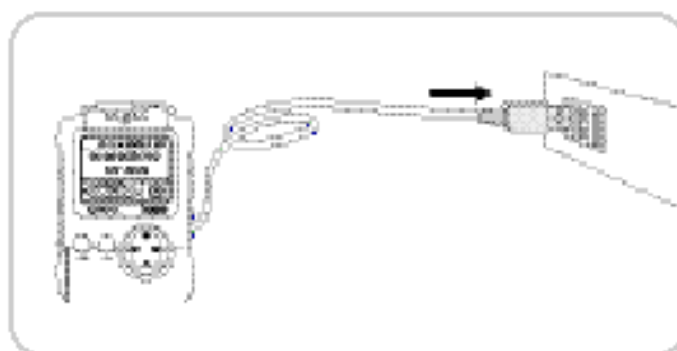
5-2) If the following picture appears after the step 4), the computer has to be restarted.



● USB driver installation

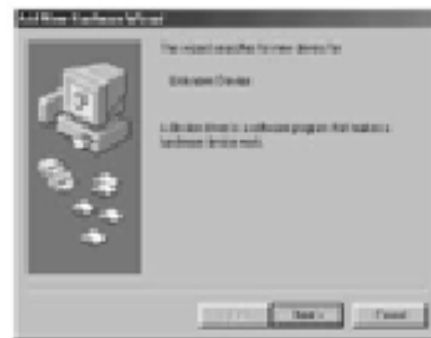
► Carry out following steps with the installation CD in your CD-ROM.

1) Plug the USB cable into the USB port on your computer.

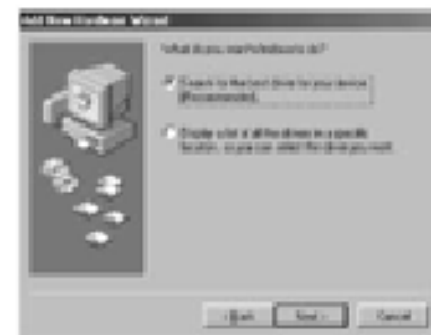


2) "Add New Hardware Wizard" will be executed automatically.

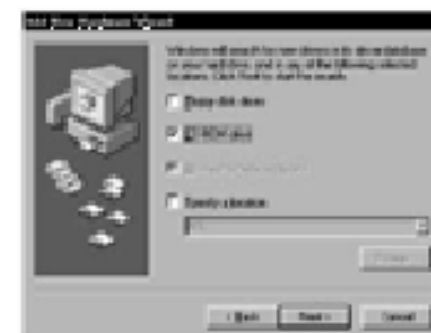
Then, press the "Next>" button.



3) Select "Search for the best driver for your device (Recommended)" item, and press the "Next>" button.



4) Check "CD-ROM drive" and press the "Next>" button.



program installation

How to use



5) Now it is ready to install the best USB driver. Press "Next>" button.

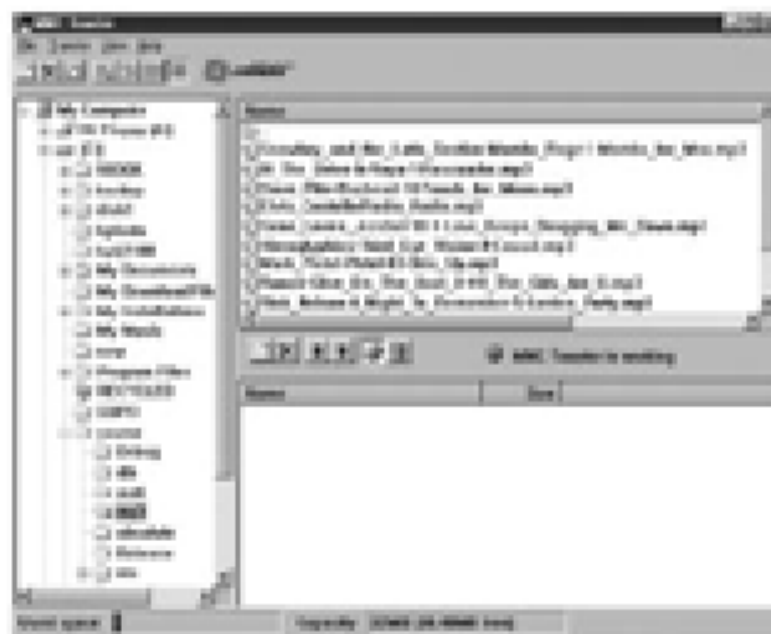



6) Press "Finish" button to complete the installation of USB driver.



► **Download** (File copy from PC to Flash Memory/MMC)




- 1) Execute MMC-Toaster program
- 2) Click " " button to select built-in Flash memory as a target.
Click " " button to select MMC as a target.



- 3) After selecting files, press "  " button.






► Upload (File copy from Flash Memory/MMC to PC)

- 1) Execute MMC-Toaster program
- 2) Click "  " button to select built-in Flash memory as a target.
Click "  " button to select MMC as a target.
- 3) After selecting files, press "  " button.





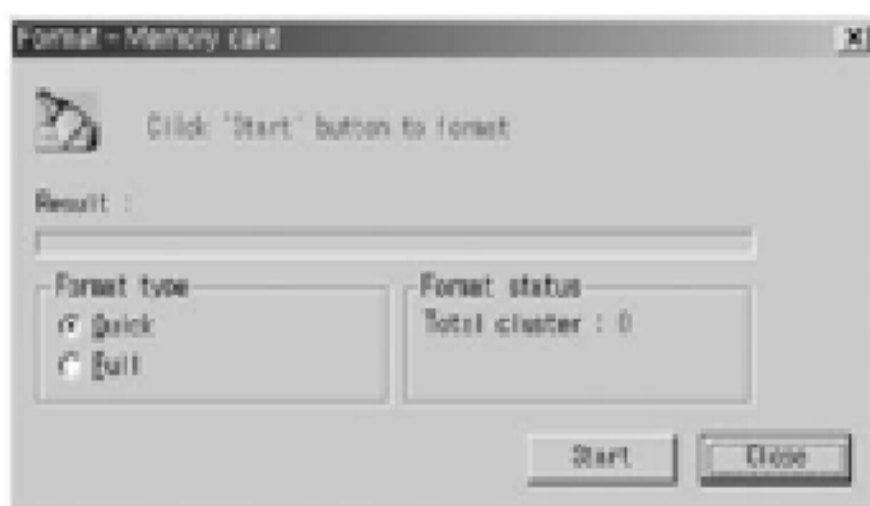
► Delete file from MMC/Flash Memory

- 1) Execute MMC-Toaster program.
- 2) Click "  " button to select built-in Flash memory as a target.
Click "  " button to select MMC as a target.
- 3) After selecting files, press "  " button.



► MMC/Flash Memory Format

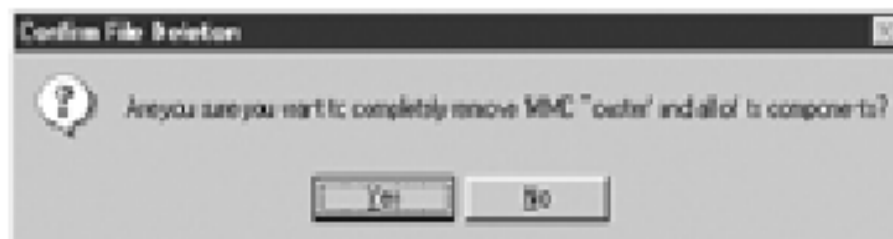
- 1) Execute MMC-Toaster program
- 2) Click "  " button to select built-in Flash memory as a target.
Click "  " button to select MMC as a target.
- 3) Select "File" - "Format memory card" from the menu bar.
- 4) Select type of format and select "start".
("Full format" is recommended for the first time use)



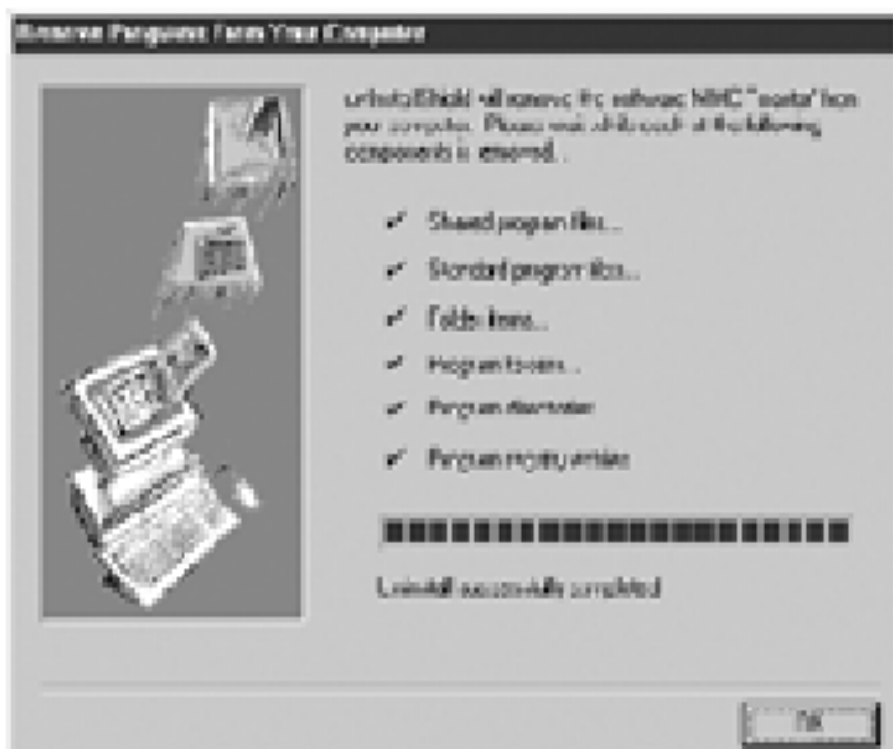
- 5) Select "Close" when the format is finished.

► Program Uninstallation


- 1) Select from the Windows "Start" menu, "Setting" - "Control Panel" - "Add/Remove Program".
- 2) Select "MMC- Toaster".
- 3) Click "Yes" button.




- 4) Click "OK" button to finish the uninstallation.



● Power On / Play

- ① The power is on by pressing  button.
- ② After approximately 2 seconds, "Initialize..." appears. After "DMP-2010L" is shown on the LCD screen, volume counter is increased. (Checking playable MP3 files for Flash memory, MMC 1, and MMC 2 is finished)
- ③ On the LCD screen, the remaining battery, MMC status, sound effect, volume and the like are marked.

● Stop / Power Off

- ① Press the  button for a while till "POWER OFF" is shown in the LCD screen. Then, power is getting off automatically.

(Reference)

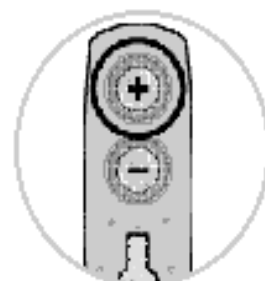
When two MMC is simultaneously inserted in the two slots, the order is determined following the unique ID of MMC. For this reason, Slot A and Slot B are not separately designated. However, MMC with low unique ID is recognized as A and the other MMC is recognized as B.

(Caution) Do not remove MMC from the slot while playing the music.

● Volume Control

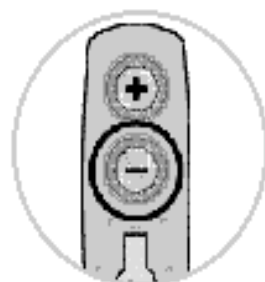
① To increase the volume.

- Press the [+] button shortly to increase the volume by each level.
- Press the [+] button long to increase the volume in consecutively.



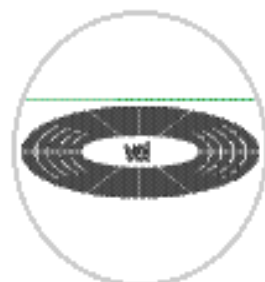
② To reduce the volume.

- Press the [—] button shortly to reduce the volume by each level.
- Press the [—] button long to reduce the volume consecutively.



★ At this time,


- a) The volume is marked on the LCD screen in 20 levels.






● Playing condition

MMC1 icon or MMC2 icon is blinking depend on which one is being played.



● Go to the Next Song

- ① When the  button is pressed, the current song is stopped and next song is played. On the LCD screen, the title of the song played is shown.
- ② On the entire play condition; the entire songs are circulated.
- ③ On the 1 song play condition; the same song is repeatedly played.

● Go to the Previous Song

- ① When the  button is pressed, the current song is stopped and the previous song is played. On the LCD screen, the title of the played song is shown.
- ② After the music is played, when the  button is pressed before 3 seconds, it moves to the previous song. When pressing the  button after 3 seconds, the current song is re-played from the beginning part.
- ③ In the entire play condition; the entire songs are circulated.
- ④ In the 1 song play condition; the same song is repeatedly played.


● Pause Function


- ① While music is in play, press the  button to temporarily stop the music and "Pause" is marked on the LCD screen.
- ② Press the  button again, the music is continuously played and the title of the song is played on the LCD screen.

* At this time,

- a) When none of the button is pressed for 3 minutes in the temporarily stopped condition, the power is automatically off for protecting the battery.

● HOLD Function

- ① When the HOLD button is on, "  " icon is on the LCD screen. And the function is not performed even other buttons are pressed.
- ② By preventing the case of wrongly pressing the buttons in walking or running with DMP-2010L, the activation is increased.
- ③ When the power is up with the HOLD Mode on "Hold Key Enable" is shown on the LCD and power is down Automatically.

* To play music, turn off HOLD button and press the  button.

How to use Mode button

How to use

● Mode Selection Button

User can use external FM Radio. By pressing Mode Selection Button, the mode can be changed as shown on the next picture.



▶ MP3 Mode

Default mode

▶ File Search Mode & View Mode

⏮ : select the next file.

⏭ : Select the previous file.

- for more detailed information or view file contents press FUNC Button.

- To play the music, press "▶" button.

▶ Radio Mode (Option)

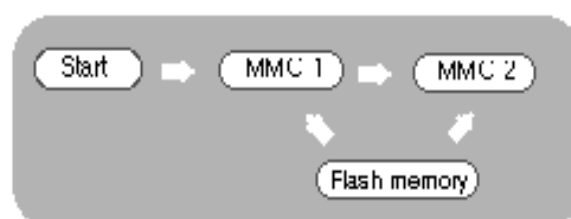
"Radio On" is displayed on the LCD and FM Radio is heard.

(Reference) With ordinary earphone, Radio Mode can't be selected.

● Memory Selection Button (E)

DMP-2010L has built-in Flash memory (32MB or 64MB) and two MMC Cards.

By pressing Memory Selection Button, MMC1 ->MMC2 -> Flash Memory can be selected.



● Block Repeat Button (R)

The user may repeatedly play a song in the desired block.

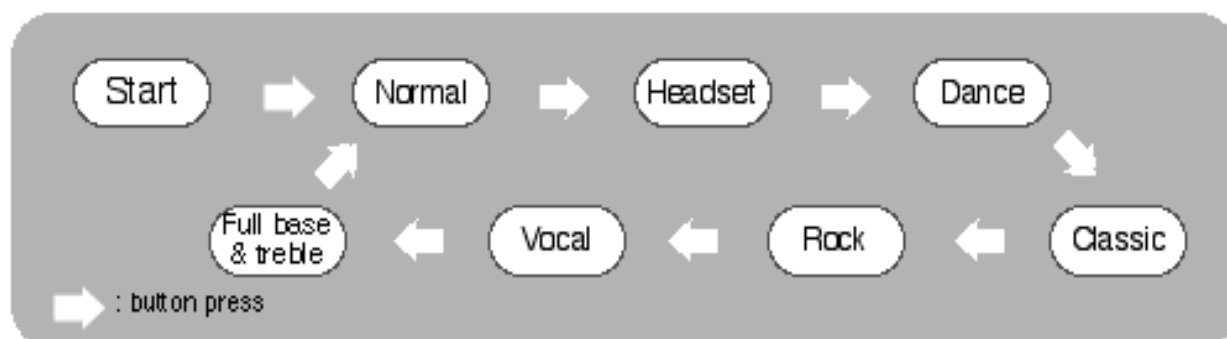
▶ Setting Up of Block Repeat Function

- 1) When you press the R button, "Local Repeat S" shows on the LCD screen and the block repeat starting point is set up.
- 2) When you press the R button again, the block repeat ending point is set up. "Repeat" appears and Block Repeat starts.

- ▶ Cancellation of Block Repeat Function : Press the R button to cancel Block Repeat Function.

● FUNC Button

With FUNC Button, user can enjoy music with 7 different modes.



● One song repeat button (⏮)

- 1) While playing music, press the ⏮ button for two seconds. One song is played repeatedly.
- 2) To cancel one song repeat, press the ⏮ button for two seconds.

► LCD Display Function

● File title display

Files with English title can be displayed on the LCD.

✱ Files with displayable title- up to 8 English characters can be displayed.

✱ Files with no displayable title appears on the LCD as follows

Ex) Mmc: (02).MP3 or

Flash: (03).MP3

● TAG and ID Display Function

Normally, MP3 file is created with ID3 or TAG which holds information on the music. DMP-2010L can display the music information. ID3 is saved at the first part of the music and TAG is saved at the last part of the music. (Can't be supported with files without ID3 or TAG)

(Reference) Without ID3 or TAG, just file title is displayed.

● User Name Display Function


DMP-2010L supports User Name Display that is saved in the internal memory.

A : User name has to be saved in the internal memory as OWNER file.

▶ how to make the OWNER file

1. Execute "Note pad" program.
2. Input user name up to 16 characters.
3. Save the file as "OWNER.txt"
4. With MMC- Toaster, download the file to the Flash memory.

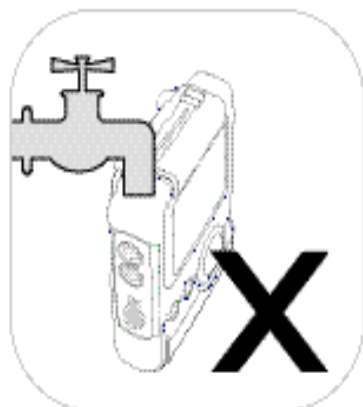
B : How to display user name

Press the  button and Repeat Button at the same time, until the volume is increased and ROM version "OPT S/W XX" is displayed on the LCD. Then stop pressing the buttons. User name is displayed on the LCD.

(when there is no "OWNER" file, "www.openers.co.kr" appears on the LCD)

Precautions

Additional Information



- ▶ When an electrical shock or physical impact is applied while listening to music, the software may determine abnormality of the currently playing song and it automatically plays the next song. This is to prevent the stoppage that is caused by mistake or defect of the product.

- ▶ Do not apply strong impact.
DMP-2010L is not affected at all when walking or exercising, but may be damaged when it is dropped from a high place or impact with heavy object.

- ▶ Do not apply water to the product.
When water gets into the product, the internal parts of the product may be damaged and problems ensued for the product. In the event the product has water on the surface, wipe off with cloth immediately, and when abnormality is detected, inquiry to the purchase store.



- ▶ Storage of Product
Avoid the places of oily and humid places.
Avoid the places of strong magnetic field.
Avoid the places of strong heat.

- ▶ Use of Battery
Always use the new batteries. When you use the new battery with the old battery, severe heating generation may occur and may damage the product.

- ▶ After the product is opened, confirm the component lists.
- ▶ Prepare the Product Guarantee Statement.

Troubleshooting

- 1) When the stop button is pressed for over 2 seconds, and the power is not out
 - ▶ Check whether the stop button is correctly pressed.
 - Press the stop button for more than 2 seconds.
- 2) When the power is not on even with the Play button pressed
 - ▶ Check whether the HOLD button is on.
 - Turn off the HOLD button and press the Play button again to turn on the power.
 - ▶ Confirm whether battery or charger is in.
 - Confirm the polarity (+, -) of battery or charger and insert it.
 - ▶ Check whether battery or charger is exhausted.
 - Charge the battery or charger to confirm the polarity (+, -) and then insert.
- 3) In the event the LCD is on but the music is not played
 - ▶ Confirm whether the remaining battery is sufficient.
 - Change the battery and use it.

4) LCD is momentarily turned on and immediately turned off

- ▶ Confirm whether the content is in Flash or MMC
- Download music using Toaster program

5) Music is played but the sound is not made

- ▶ Confirm whether the volume is minimum.
- Use the volume button (+) to press one step at a time or press continuously until appropriate sound is heard.

6) When the song is continuously popped during the play

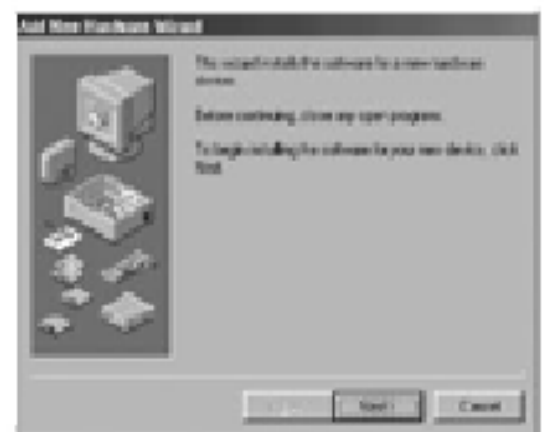
- ▶ Confirm the remaining life of the battery or charger
- It is the phenomenon that is shown when the battery is weak

- ❖ Check the following points when you have trouble using MMC Toaster program
 - When "Add New Hardware Wizard" is not executed automatically.

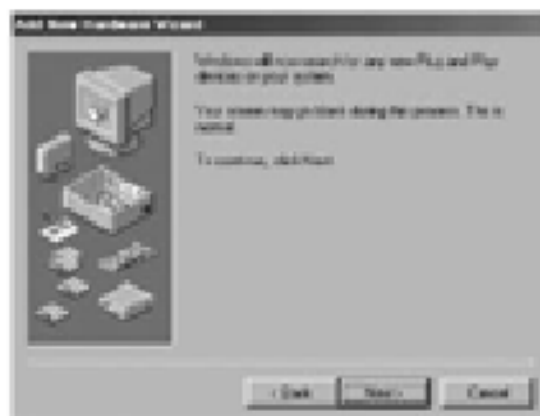
- 1) Connect MMC Toaster to PC
- 2) [Start]-[Settings]-[Control Panel].
Double click "Add New Hardware".



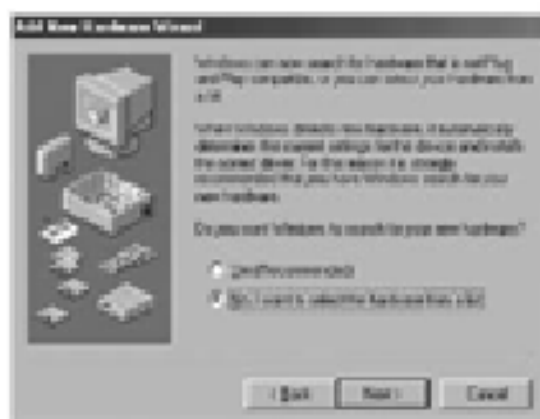
- 3) "Add New Hardware Wizard" window appears. Press "Next>" button.



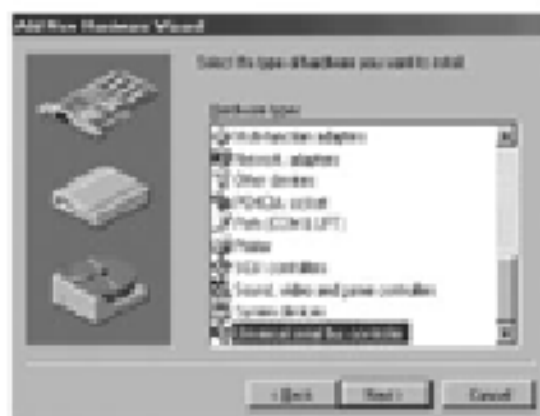
4) Press "Next>" button.



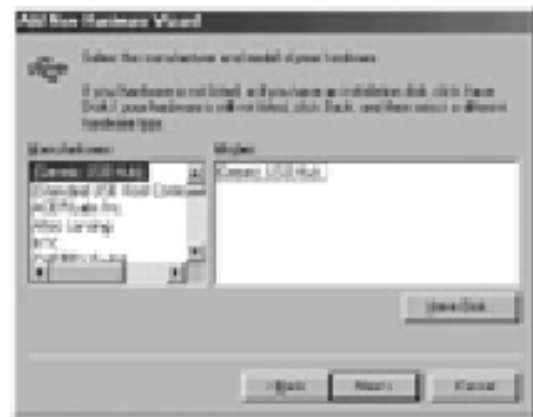
5) Select "No, I want to select the hardware from a list", and then press "Next>" button.



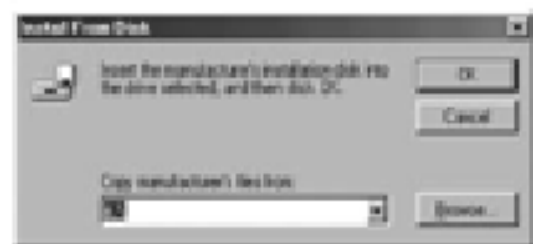
6) Select "Universal serial bus controller", and then press "Next>" button.



- 7) Press "Have Disk" button, and designate the hardware.
Press "Next>" button.



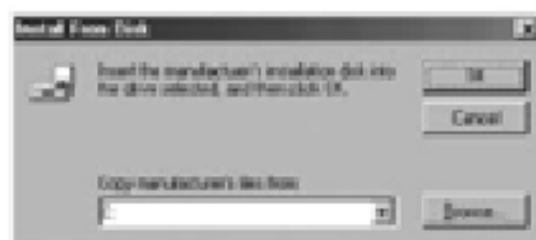
- 8) Press "Browse" button.



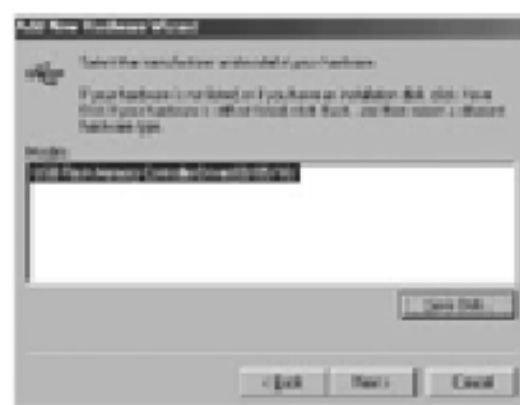
- 9) Insert the Installation CD into your CD-ROM Drive.
Select "usbfm.c.inf" and then press "OK" button.



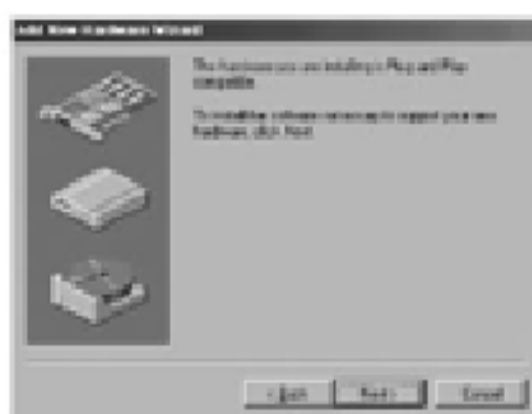
10) Press "OK" button.



11) Press "Next>" button.



12) Press "Next>" button to start the driver installation.

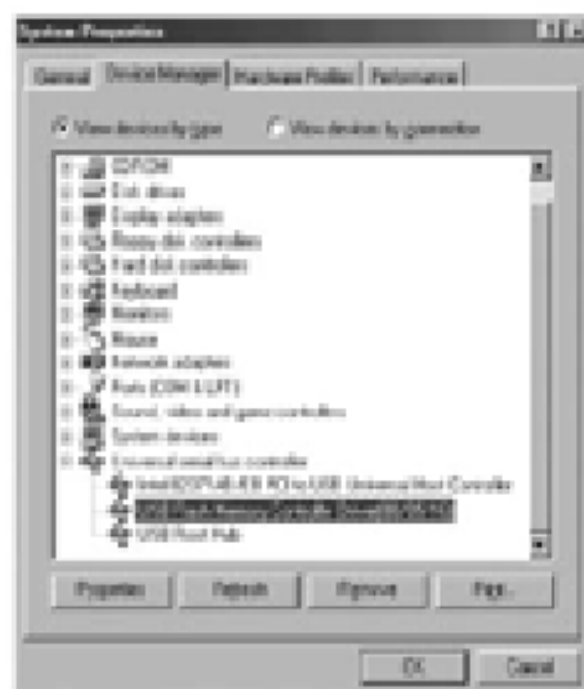


- 13) Press "Finish" button to complete the installation.



- 14) [Strat]-[Settings]-[Control Panel]. Select "System" and select "Device Manager" tab. Now "USB Flash Memory Controller Driver" appears.

- When the "!" mark appears with the device name or marked as "Unknown Device":Errors during the installation or the installed device is not proper. Press "Remove" button and install again.



- When "Universal serial bus controller" doesn't appear in the "System Properties" :Errors with Windows 98 or the hardware. Consult with a Software Manager or a Hardware Manager.





- Problems with the main board: Check the CMOS Setup in the main board. If the USB condition is "Disable" or "OFF", changes it into "Enable" or "ON"

Related Information

Additional Information

❖ Internet Site

- <http://www.m4you.com/>
- <http://www.audiofind.com/>
- <http://mp3.now.com/>
- <http://mp3.lycos.com/>
- <http://www.mp3.com/>

Product Specification

- ▶ Memory : Built-In Flash Memory 32/64MB, 2 MMC slots
- ▶ Power : 1.5V * 2 batteries (AAA)
- ▶ Continuous operating time : Approximately 10 hours
- ▶ Display : Liquid Crystal Display (LCD)
- ▶ File transmission speed : 130Kbyte/sec
- ▶ Earphone output : 5mW
- ▶ Frequency : 20Hz - 20KHz
- ▶ Dimension : 60.0mm (W) × 81.0mm (H) × 22.0mm (D)

❖ Information to the user

This equipment has been tested and found to comply with the limits for a Class B digital device, pursuant to Part 15 of the FCC Rules. These limits are designed to provide reasonable protection against harmful interference in a residential installation. This equipment generates, uses and can radiate radio frequency energy and, if not installed and used in accordance with the instructions, may cause harmful interference to radio communications. However, there is no guarantee that interference will not occur in a particular installation. If this equipment does cause harmful interference to radio or television reception, which can be determined by turning the equipment off and on, the user is encouraged to try to correct the interference by one or more of the following measure:

- Reorient or relocated the receiving antenna.
- Increase the separation between the equipment and receiver.
- Connect the equipment into an outlet on a circuit different from that to which the receiver is connected.
- Consult the dealer or an experienced radio/TV technician for help.
- Shielded cables must be used to comply with FCC regulations.

WARNING (Part 15, Section 15.21)

Changes or modifications not expressly approved by the party responsible for compliance could void the user's authority to operate the equipment.