

DMP2010 Manual ver 0.0.1

1. Before Use

- What is Multi Codec Player? (What is WMA, AAC, MP3 Player?)

Multi Codec Player is a next generation digital music play that can hear variety of music files not only for MP3 but also WMA, .AAC and others, with the level of CD quality.

Terminology

.MP3 (MPEG1 Audio Layer3)

Existing music CD data is provided with the CD level of quality with the music file made by utilizing the world class audio data compression technology.

.WMA (Windows Media Audio)

It is a MS developed music file that only 1/2 capacity of MP3 file to provide the CD level of quality.

.AAC (Advanced Audio Coding)

AAC standard is a next generation digital audio encoding technology that it is a technology that can be utilized in the digital broadcasting, digital music and others, and it is known to have a better audio quality and compression rate than MP3.

- What is Hanzoom 2010?

This is a multi-codec player developed by Openers Co., Ltd. that there are MP3, WMA, AAC in the music format that has the voice recording functions. Also it is easy to watch with its selection of large screen LCD, and it enables to mark on the variety information.

INFORMATION TO THE USER (Part 15, Section 15.105(b))

INFORMATION TO THE USER

Τηισ εθυιπμεντ ηας βεεν τεστεδ ανδ φουνδ το χομπλψ ωιτη τηε λιμιτς φορ α Χλασσ Β διγιταλ δεωιχε, πυρσυαντ το παρτ 15 οφ τηε ΦΧΧ Ρυλες. Τηεσε λιμιτς αρε δεσιγνεδ το προωιδε ρεασοναβλε προτεχτιον αγαινστ ηαρμφυλ ιντερφερενχε ιν α ρεσιδεντιαλ ινσταλλατιον. Τηισ εθυιπμεντ γενερατες, υσες ανδ χαν ραδιατε ραδιο φρεθυενχψ ενεργψ ανδ, ιφ νοτ ινσταλλεδ ανδ υσεδ ιν αχχορδανχε ωιτη τηε ινστρυχτιονς, μαψ χαυσε ηαρμφυλ ιντερφερενχε το ραδιο χομμυνιχατιονς. Ηωεωερ, τηερε ις νο γυαραντεε τηατ ιντερφερενχε ωιλλ νοτ οχχυρ ιν α παρτιχυλαρ ινσταλλατιον. Ιφ τηισ εθυιπμεντ δοες χαυσε ηαρμφυλ ιντερφερενχε το ραδιο ορ τελεωισιον ρεχεπτιον, ωηιχη χαν βε δετερμινεδ βψ τυρνινγ τηε εθυιπμεντ οφφ ανδ ον, τηε υσερ ις ενχουραγεδ το τρψ το χορρεχτ τηε ιντερφερενχε βψ ονε μορε οφ τηε φολλοωινγ μεασυρες:

Ρεοριεντ ορ ρελοχατε τηε ρεχειωινγ αντεννα.

Ινχρεασε τηε σεπαρατιον βετωεεν τηε εθυιπμεντ ανδ ρεχειωερ.

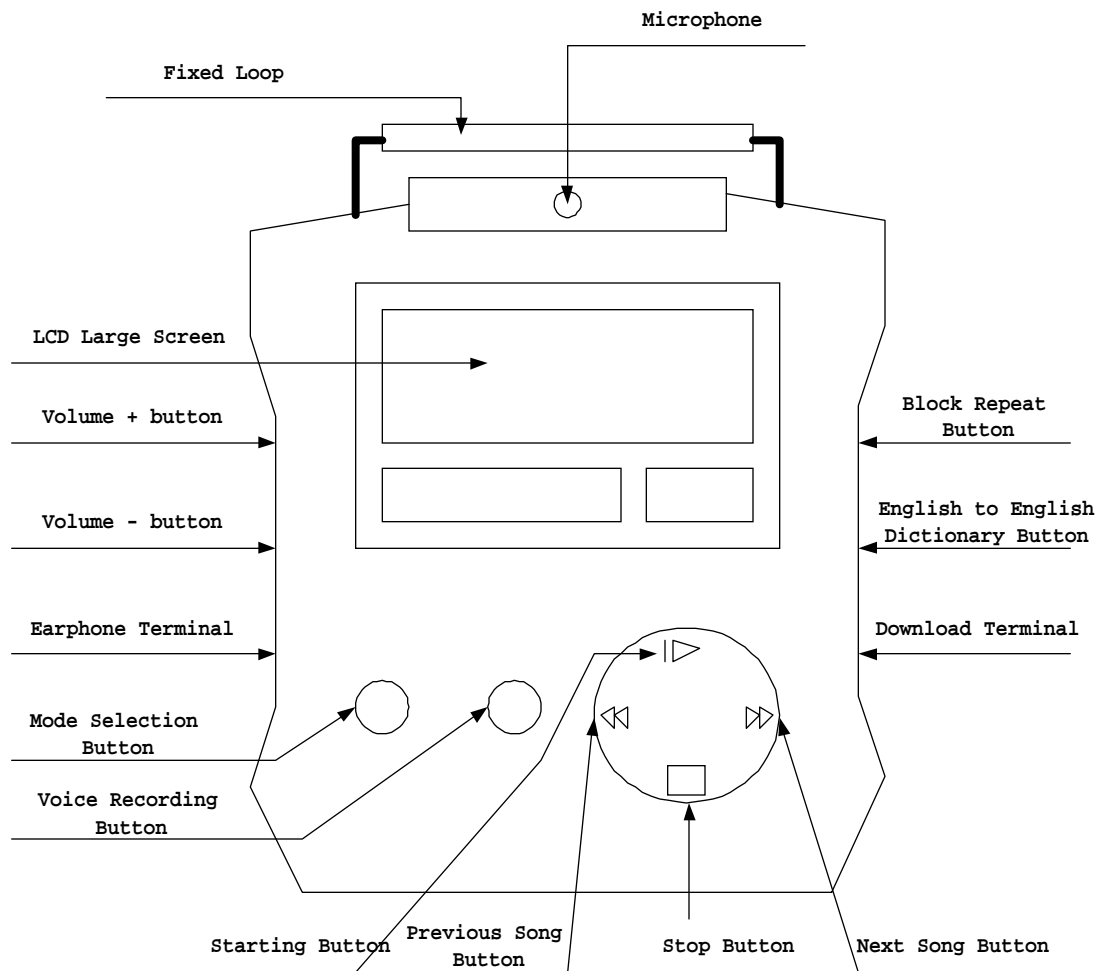
Χοννεχτ τηε εθυιπμεντ ιν το αν ουτλετ ον α χιρχυιτ διφφερεντ φρομ τηατ το ωηιχη τηε ρεχειωερ ις χοννεχτεδ.

Χονσυлт τηε δεαλερ ορ αν εξπεριενχεδ ραδιο/Τς τεχνηνιχιαν φορ ηελπ.

WARNING (Part 15, Section 15.21)

Χηανγες ορ μοδιφιχατιονς νοτ εξπρεσσλψ αππροωεδ βψ τηε παρτυ ρεσπονσιβλε φορ χομπλιανχε χουλδ ωοιδε τηε υσερ'ς αυτηοριτυ το οπερατε τηε εθυιπμεντ.

- Organization Chart of the Main Body



- PC System Requirements

1. Pentium 75 or better,
2. RAM 16M or more,
3. CD-ROM Drive (x2 or better),
4. HDD 30M or more,
5. Window95 or better.
6. USB port

- Features and Characteristics

1. Large screen LCD
2. Marking of variety of music information
3. Play of multi format music file support (MP3, WMA, AAC)
4. Voice recording

5. Possible to support for next generation music file that will be provided in the future
6. Upgrade of functions through Internet
7. Possible to use various OS like Windows, Mac and others
8. Design of new level

- Components

1. DMP2010 Player
2. Earphone
3. MMC (32M)
4. MMC Writer
5. MMC Installation Program
6. Use Manual

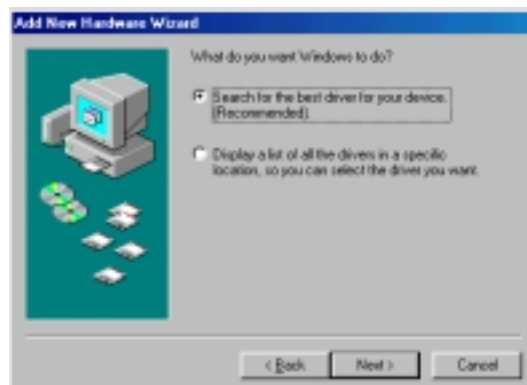
2. Product Installation Method

- Connecting to PC (Writer connection method)

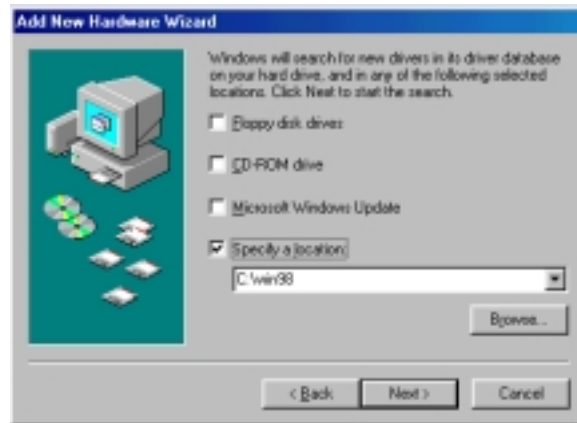
- 1) Connect MMC Writer to the USB port.
- 2) Moment after, a message is shown to say that it found device. Here, click “Next>” to begin driver installation.



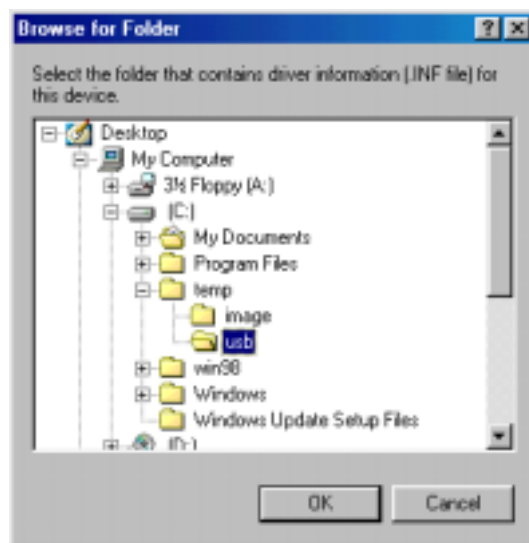
- 3) Select the search (recommended) for driver that is appropriate to the device and click “Next>” button.



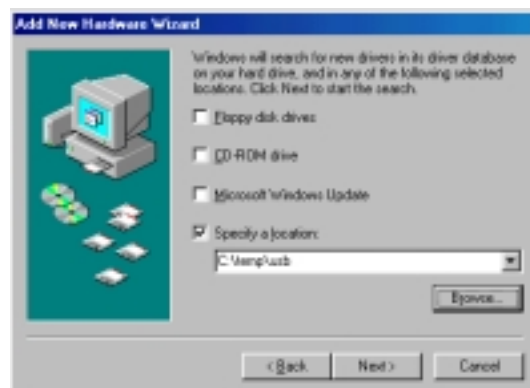
- 4) This is a window to designate the driver location.
- After checking as shown in the picture, click the “(R)” button to designate the location and click the “Confirm” button.



- After designating the path, click on the “Confirm” button.



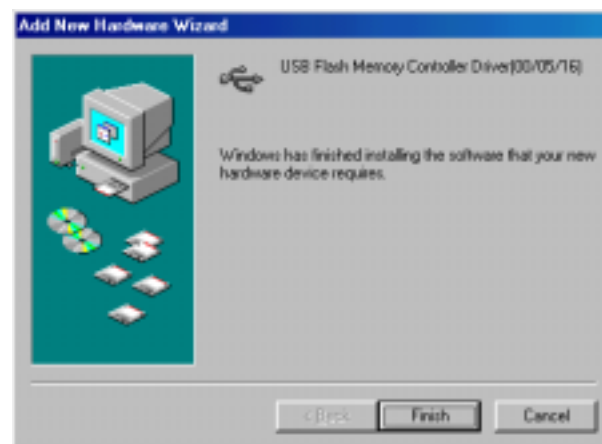
- The next picture is the window of after designating of location. Click “Next>” button.



- 5) When “Next>” button is clicked, driver installation begins.

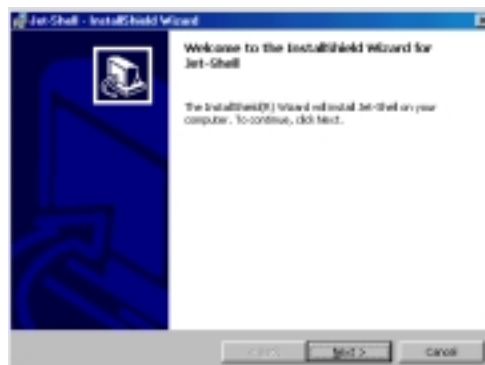


- 6) After the installation, the following device name appears.
When clicking “Complete” button, the drive installation is completed.

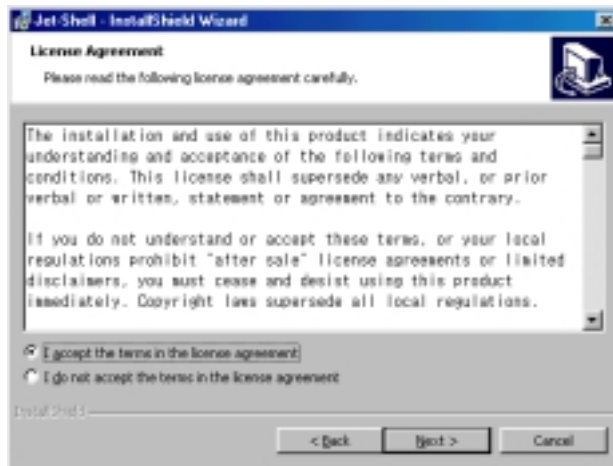


- Program Installation

- 1) Execute Setup.exe.
- 2) Press the "Next (N)>" button.



3) After selecting "I accept the terms in the license agreement", press the button for "Next>".

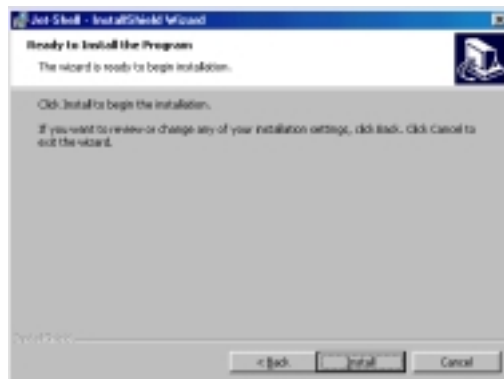


4) This is a window to designate the folder to be installed.

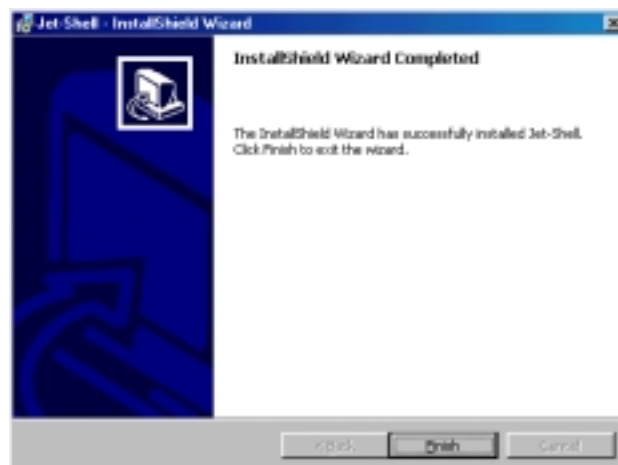
Press "Change" button only when changing the folder to change the folder and press "Next>" button. And when not changing, press "Next>" button to go to the next.

5) Message to begin "Install" appears.

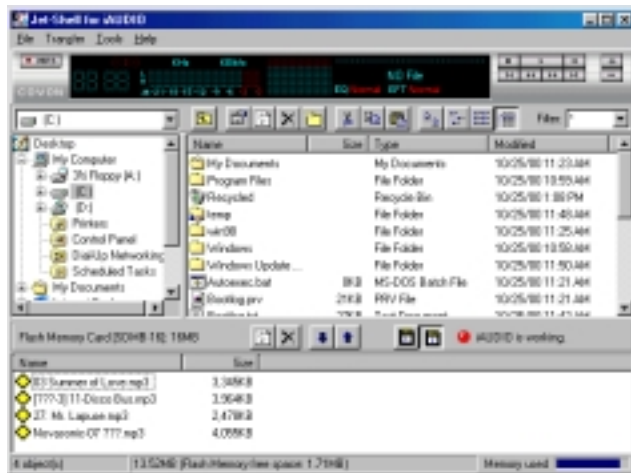
When pressing "Install" button, the installation begins.



6) When installation is completed, press "Finish" button to complete the installation.



* When program is executed, the following picture appears.



After inserting the MMC card into Writer, press 2 button.

- Program Use Method

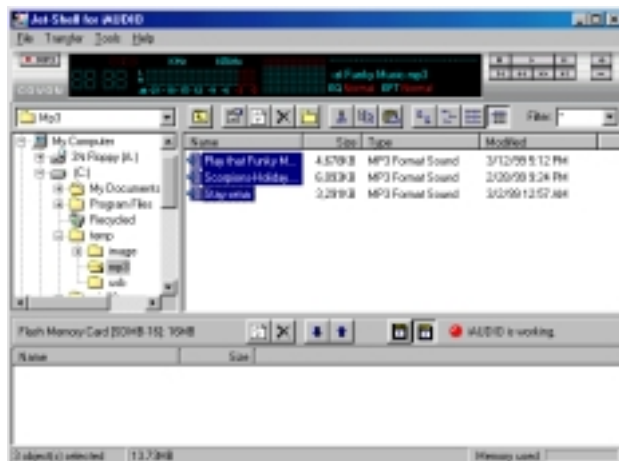
* Download (File copy with MMC card at PC)

1) Set-Shell is executed at [Begin]-[Program (P)]-[cowon]-[Jet-Shell].

*Click twice when executing the program.

2) Insert MMC card into Writer.

3) After selecting the desired file, press "↵" button.



* Upload (File copy at MMC card to PC)

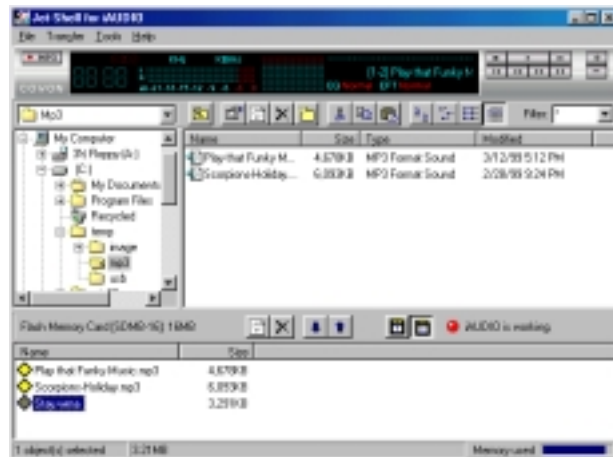
<Upload function is not supported only when the expanding is MP3>

1) Set-Shell is executed at [Begin]-[Program (P)]-[cowon]-[Jet-Shell].

*Click twice when executing the program.

2) Insert MMC card into Writer.

3) After selecting the desired file, press " ⏏ " button.



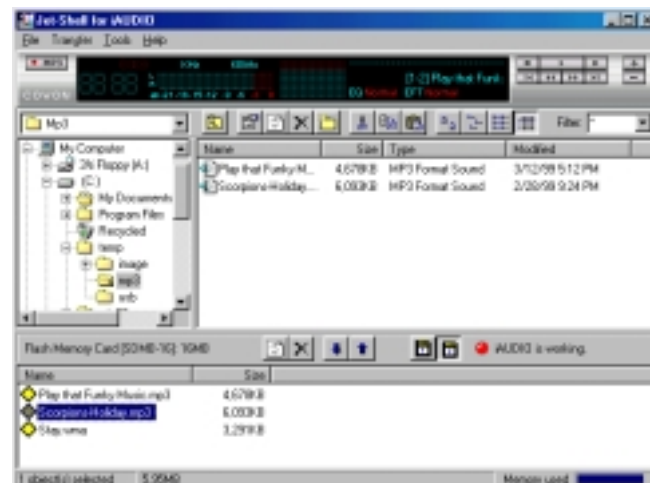
* Delete the file from MMC card

1) Set-Shell is executed at [Begin]-[Program (P)]-[cowon]-[Jet-Shell].

*Click twice when executing the program.

2) Insert MMC card into Writer.

3) After selecting the desired file, press " X " button.



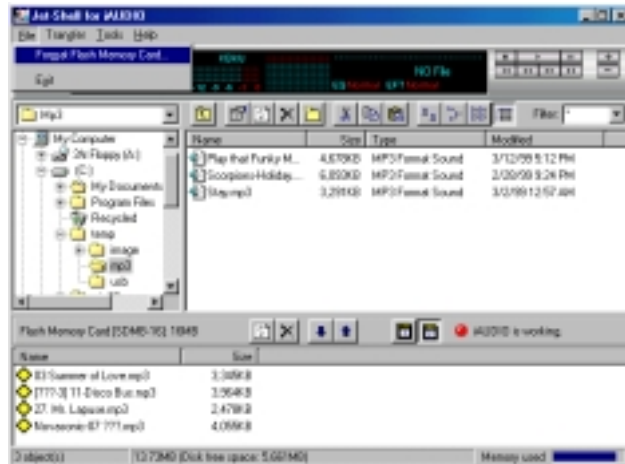
* MMC Card Format

1) Set-Shell is executed at [Begin]-[Program (P)]-[cowon]-[Jet-Shell].

*Click twice when executing the program.

2) Insert MMC card into Writer.

3) Select "File"- "Format Flash Memory Card " from Menu.



4) When talk box is shown, press the "Start" button.



5) When work is complete, press the "Close" button.

- Program Deletion

1) [Begin]-[Control Board]-[Program Add/Delete] is executed.

2) After selecting Jet-Shell, press the "Add/Delete." button.

3) Click the "Next>" button.

4) After selecting "Remove", click the "Next>" button.

5) Click the "Remove" button to begin the program removal.

6) When remove is completed, press the "Finish" button.

3. How to Use Product

Power on for DMP2010 and Music play

1) Insert MMC card into the slot.

2) The power is on by pressing [⏻] button and the LCD back light is on.

3) After approximately 4 seconds, "Start DMP2010" is shown on the LCD screen, the music that was heard the last time is play. A moment later, the title of the playing song is appeared on the LCD screen.

4) On the LCD screen, the remaining battery, MMC status, sound effect, volume and the like are marked.

5) When pressing all buttons of DMP2010, the LCD back light is on and the LCD back light is

automatically turned off in 2 seconds.

At This Time,

- a) The file that has the MP3, WMA, AAC, ASF extension is searched and played. Voice recording file is play only at the voice file search condition.
- b) The English support is made but not the Korean support. When the song title is in Korean, the order of the song in B MMC is the third and if it is MP3, it is marked with "B:\Music003.MP3".
- c) The song is play with the same volume and sound effect of the last music when the power of off.
- d) When there is changes in MMC, play is made from the first song in A card.

(Reference) When two MMC is simultaneously inserted in the two slots, the order is determined following the unique ID of MMC. For this reason, Slot A and Slot B are not separately designated. However, MMC with fast unique ID is recognized as A and the other MMC is recognized as B.

(Caution) When MMC are all taken out from DMP2010 while in play, power is disconnected in a moment of time.

Stopping of Music play and Turn Off of DMP2010 Power

- 1) When the [€] button is pressed while the music is play, the play of the song is stopped, and the "Stop" is shown on the LCD screen.
- 2) When the [∂] button is pressed while the play is stopped, the song is resumed.
- 3) While DMP2010 is on and pressed [€], "Power off" is shown on the LCD screen and it automatically pressed to off.

Method to Use the Mode for Functions

- 1) When mode button is pressed, it becomes the condition that searches the installed function.
- 2) When the [✕ ✕] button or [∂∂] button is pressed, the entire functions may be searched.
- 3) When the [∂] button is pressed, the mode search condition is automatically stopped and the applicable function is executed.
- 4) When the [€] button is pressed, all mode search is finished.
- 5) When the mode button is pressed again, all mode searches are expired.
- 6) When selecting a function, the location of mode is continuously maintained. Therefore, when the mode button is pressed, the mode of the last execution appeared on the LCD screen. The exception is made when voice recording is made, the location of mode is "5. Voice Mode".

The are 14 current functions.

1. Repeat Mode (Function that repeat one song)
2. Intro Mode (Function to search entire songs)
3. Random Mode (Function of play with irregular order)
4. Sound Effect (Function of sound effect)
5. Voice Mode (Function of play with voice recording)
6. File Copy (Song duplication function)
7. File Delete (Song deletion function)
8. BookMark Set (Book Mark setting function)

9. BookMark Seek (Book Mark search function)
10. Auto power off (Automatic expiration function)
11. Fast Search (High speed search function)
12. Tel Book (Telephone book function)
13. Stop Watch (Stop Watch function)
14. E2 Dictionary (English to English Dictionary Function)

Play Condition

- 1) In the play condition, there are entire repeat, 1 song repeat, irregular play functions.
- 2) The basic play condition is the entire repeat play condition.

ε Determination of 1 song repeat play condition

- 1) Press the menu button and search with the [**⌂**] button or [**⏮**] button to show "1.Repear Mode" on the LCD screen, then press the [**⏮**] button to execute the 1 song repeat play function.
- 2) When the [**⏮**] button is pressed, "Repeat Mode On" on the LCD screen is shown and the applicable song is repeatedly played. Picture 1 is on and all pictures are off.

ε Cancel the 1 song repeat play condition

- 1) When the menu button is pressed and the [**⌂**] button or [**⏮**] button to search with "1. Repeat Mode" on the LCD screen is on, the press the [**⏮**] button to cancel the play function for 1 song repeat.
- 2) When the [**⏮**] button is pressed and the "Repeat Mode Off" appears on the LCD screen, play condition for 1 song repeat is cancelled. The 1 picture is off and all pictures are on.

At this time,

- a) While setting for play condition for 1 song repeat, the [**⌂**] button or [**⏮**] button is pressed and play the applicable songs.

ε Setting of irregular play condition

- 1) Pressed the Menu button and search the [**⌂**] button or [**⏮**] button to show "3. Random Mode" on the LCD screen, press the [**⏮**] button to execute the irregular play function.
- 2) Press the [**⏮**] button to show the "Random Mode On" on the LCD screen, then the order of play is irregularly played. Picture 1 or all pictures is off.

ε Canceling of Irregular play condition

- 1) Pressed the Menu button and search the [**⌂**] button or [**⏮**] button to show "3. Random Mode" on the LCD screen, press the [**⏮**] button to cancel the irregular play function.
- 2) Press the [**⏮**] button to show the "Random Mode Off" on the LCD screen, then the irregular play is cancelled. All pictures are on.

At this time,

- a) While in irregular play is on, press the [**⌂**] button or [**⏮**] button, the order of songs played is irregularly played.

Go to the Next Song

- 1) When the [**⏮**] button is pressed, the current song is stopped and next song is played. On the LCD screen, the title of the song played is played.
- 2) On the entire play condition, the entire songs are circulated.

- 3) On the 1 song play condition, the same song is repeatedly played.
- 4) On the irregular play condition, songs are played at random.

Go to the Previous Song

- 1) When the [⏮] button is pressed, the current song is stopped and the previous song is played. On the LCD screen, the title of the played song is played.
- 2) After the music is played, the [⏮] button is pressed before 3 seconds, it moves to the previous song. When pressing the [⏮] button after 3 seconds, the current song is re-played from the beginning part.
- 3) In the entire play condition, the entire songs are circulated.
- 4) In the 1 song play condition, the same song is repeatedly played.
- 5) In the irregular play condition, the irregular song is played.

Volume Control

- 1) When the volume is raised
Press the [K] button shortly to have the volume increased by each level.
Press the [K] button long to have the volume increased in serially.
- 2) When the volume is reduced
Press the [] button shortly to reduce the volume by each level.
Press the [] button long to reduce the volume consecutively.

At this time,

- a) The volume is marked on the LCD screen in 20 levels.

Pause Function

- 1) While music is in play, press the [⏸] button to temporarily stop the music and “Pause” is marked on the LCD screen.
- 2) Press the [⏸] button again, the music is continuously played and the title of the song is played on the LCD screen.
At this time,
- a) When none of the button is pressed for 30 seconds in the temporarily stopped condition, the power is automatically stopped for protecting the battery.

Conversion of Sound Effect

- 1) In the sound effect of DMP2010, there are two functions in Emphasis Sound and 3 Dimension Surround function.
- 2) Combine the two functions to make four types of sound effects.

ε Setting Up of Sound Effects

- 1) Press the Menu button to search the [⏮] button or [⏸] button to show “4. Sound Effect” on the LCD screen, the function of Sound Effect set is executed by pressing the [⏸] button.
- 2) After pressing the [⏸] button, one of the “3S On EMP On”, “3S On EMP Off”, “3S Off EMP Off”, “3S Off EMP On” conditions are selected on the LCD screen, and the sound effect is reflected on the applicable song.

- 3) To select the desired sound effect, repeat 1) and 2).
- 4) When "3S On" is set, S picture is on the LCD screen, and when "3S Off" is set, S picture is off on the LCD screen.

Search Function

- 1) After playing for about 8 seconds with the quick search function for the desired song, then go to the next song.

ε Setting for search for songs

- 1) Press the Menu button, search the [**⌘**] button or [**⏮**] button to show "2. Intro Mode" on the LCD screen, then press the [**⏮**] button to execute the music search function.
- 2) Press the [**⏮**] button to show "Intro Mode On" on the LCD screen and set the song search function.
- 3) After playing one song for approximately 8 seconds, it goes over to the next song.

ε Canceling of Song Search Function

- 1) Press the Menu button and search the [**⌘**] button or [**⏮**] button to show "2. Intro Mode" on the LCD screen, then press the [**⏮**] button to cancel the setting of song search function.
- 2) After pressing the [**⏮**] button, the "Intro Mode Off" is shown on the LCD screen, and the song search function is canceled.

Block Repeat Function

- 1) While a song is played, the user may repeatedly play the song in the desired block.

ε Setting Up of Block Repeat Function

- 1) When pressing the [**R**] button, "Local Repeat S" shows on the LCD screen and the block repeat starting point is set up.
- 2) When pressing the [**R**] button again, "Local Repeat" shows on the LCD screen and the block repeat ending point is set up.
- 3) When pressing the [**⏮**], [**⏪**], [**⌘**], [**⏮**] buttons, the title of the song is shown on the LCD screen and the block repeat function is canceled.
- 4) In the block repeat, 1) and 2) are set up again to use the block repeat function.

HOLD Function

- 1) When the HOLD button is on, " " picture is on the LCD screen. And the function is not performed even other buttons are pressed.
- 2) By preventing the case of wrongly pressing the button in waling or running with DMP2010, the activation is increased.
- 3) In the event the HOLD button is on in the condition of not having the power on, the power is on with pressing the [**⏮**] button and "Hold key Enable" is shown on the LCD screen. If the HOLD button is not turned off, the power is automatically off in 6 seconds. Once HOLD button is off, DMP2010 is in normal operation.

Voice Recording Function

- 1) The voice of the surrounding may be recorded.
- 2) The music file and voice recording file are separated and played.
- 3) The basic condition of DMP2010 is music play condition, and for playing the voice recording file. The function has to be selected with the voice mode.

- 4) After the recording, it becomes the voice file search condition that the [∂] button is pressed to listen to the recorded contents.

ε Use of Recording Function

- 1) When pressing the recording button, "Voice Record On" is shown on the LCD screen to begin recording.
- 2) When the recording button is pressed again, the recording is finished.
- 3) While in recording, the time to record and time of recording is shown together.
- 4) When the recording is finished, it becomes the voice file search condition and when the [∂] button is pressed, the recorded contents can be heard.
- 5) With the [✕ ✕] button or [∂∂] button, the voice file can be searched.
- 6) By consecutive performance of 1) and 2), record the voice may be recorded on other files.

ε Setting Up of Voice File Search Condition

- 1) Pressing the Menu button, and search the [✕ ✕] button or [∂∂] button to show the "5. Voice Mode" on the LCD screen, press the [∂] button to set up the voice file search condition.
- 2) After pressing the [∂] button, "Voice Mode Off" appears on the LCD screen, and the voice recording file is played.

ε Canceling of Voice File Search Condition

- 1) Pressing the Menu button and search the [✕ ✕] button or [∂∂] button to show "6. Voice Mode" on the LCD screen, then press the [∂] button to cancel the voice file search condition.
- 2) After pressing the [∂] button, "Voice Mode Off" appears on the LCD screen and the music is played.
- 3) After pressing the [∂] button, the voice file search condition is automatically canceled.

At this time,

- a) If already existing recorded file, "A:\VOICE005.721", is exist, the name of newly recorded file is "A:\VOICE006.721" that a number is increased one at a time.
- b) The recording time is determined by the capacity of MMC card, and the recording is stopped automatically with the remaining 3 seconds for recording.

BookMark Function

- 1) Bookmark is set up in the location of the song that is being played.
- 2) It may easily be moved to the Bookmark position.

ε Setting Up of Bookmark Location

- 1) Press the Menu button and search the [✕ ✕] button or [∂∂] button to show "8. Bookmark Set" on the LCD screen, then press the [∂] button to set the Bookmark position.
- 2) When pressing the [∂] button, "Bookmark Set" is shown on the LCD screen and the Bookmark position on the MMC is stored.

ε Setting Up of Bookmark Location Search Function

- 1) When the Menu button is pressed and the [✕ ✕] button or [∂∂] button is searched to show "9. BookMark Seek" on the LCD screen, the [∂] button is pressed to search the Bookmark position.
- 2) After pressing the [∂] button, the title of the song that was bookmarked on the LCD screen is showed and the song is played.

(Caution) The current BookMark function is played where the song that is bookmarked in the event of MP3 format. However, in the event of AAC, WMA format, it plays in the initial position of the song BookMarked.

Automatic Termination Function

- 1) Set up the operation time of DMP2010.
- 2) DMP2010 automatically turns off when the time set for automatic expiration function has come.
- 3) In the evening, the music can be enjoyed at the desired time.

ε Setting Up of Automatic Expiration Function

- 1) Press the Menu button and search the [**⌂**] button or [**⏸**] button to show “10.Stop Timer” on the LCD screen, then the [**⏸**] button is pressed to set the Stop Timer function.
- 2) When the [**⏸**] button is pressed, "Auto power Set" is shown on the LCD screen and it becomes the automatic expiration setting condition.
- 3) When the [**⏸**] button is pressed, the automatic expiration setting time is increased for 10 minutes of each.
- 4) When the [**⌂**] button is pressed, the automatic expiration setting time is decreased for 10 minutes of each.
- 5) After pressing the [**⏸**] button, the automatic expiration setting is completed.

ε Canceling of Automatic Expiration Function

- 1) After pressing the Menu button and search the [**⌂**] button or [**⏸**] button to show “10. Stop Timer” on the LCD screen, the [**⏸**] button is pressed to set the Stop Timer function.
- 2) After pressing the [**⏸**] button, "Auto power Set" appears on the LCD screen and it becomes automatic expiration setting condition.
- 3) By pressing the [**⌂**] button to set the automatic expiration setting time for [00:00].
- 4) After pressing the [**⏸**] button, the automatic expiration setting is canceled.

Stop Watch Function

- 1) Press the Menu button and search the [**⌂**] button or [**⏸**] button to shown “13. Stop Watch” on the LCD screen, the [**⏸**] button is pressed to set the Stop Watch function.
- 2) After pressing the [**⏸**] button, "Ready [00:00:00]" appears on the LCD screen and it becomes the stop watch preparation condition.
- 3) When pressing the [**⏸**] button at preparation condition, "Run [00:00:00]" shows on the LCD screen, and the stop watch time increases.
- 4) When the [**⏸**] button is pressed again, "Stop [00:04:26]" shows on the LCD screen, and the measuring of stop watch time is stopped.
- 5) When the [**⏸**] button is pressed again, "Ready [00:00:00]" shows on the LCD screen, and the preparation for stop watch is made.
- 6) When the [**⏸**] button is pressed, the Stop Watch function is canceled and the music is played.
(Caution) Time is measured with one second interval.

Quick Search Function

- 1) User searches quickly for the play position of the song being played.
- 2) It moves in three seconds before and after.
- 3) It only supports MP3 file alone.

ε Setting Up Fast Search Function

- 1) Press the Menu button and search the [**⌂**] button or [**⏸**] button to show “11. Fast Search” on the LCD screen, then the [**⏸**] button is pressed to set up the fast search function.
- 2) After pressing the [**⏸**] button, " Fast Search On" appears on the LCD screen and it sets the fast search

function.

- 2) When the [∂∂] button is pressed, it moves 3 seconds forward.
- 3) When the [⌘⌘] button is pressed, it moves 3 seconds backward.

ε Canceling of Fast Search Function

- 1) Press the Menu button and search the [⌘⌘] button or [∂∂] button to show “11. Fast Search” on the LCD screen, then press the [∂] button to cancel the fast search function.
- 2) After pressing the [∂] button, " Fast Search Off" appears on the LCD screen, and the fast search function is canceled.

File Duplication Function

- 1) This is a function that the user copies the currently played song to other MMC.

ε Setting Up of File Copy Function

- 1) Press the Menu button and search the [⌘⌘] button or [∂∂] button to show “6. File Copy” on the LCD screen, then press the [∂] button to perform the file copy function.
- 2) When pressing the [∂] button, "File Copy Process" appears on the LCD screen and it is copied to other MMC.
- 3) When the [∂] button is pressed, the file copy function is automatically canceled.

At this time,

- a) When there is only one MMC card, copy is not made.

File Deletion Function

- 1) This is a function that the user deletes the currently playing song from MMC.

ε Setting Up of File Deletion Function

- 1) Press the Menu button and search the [⌘⌘] button or [∂∂] button to show “7. File Delete” on the LCD screen, then press the [∂] button to perform the file delete function.
- 2) When the [∂] button is pressed, "File Delete" appears on the LCD screen, then the currently playing song is deleted from MMC.
- 3) After pressing the [∂] button, the file deleting function is automatically canceled.

Telephone Book Function

- 1) It searches the telephone lists stored in MMC.

ε Setting Up of Tel book Function

- 1) Press the Menu button and search the [⌘⌘] button or [∂∂] button to show “12. Tel Book” on the LCD screen, then press the [∂] button to set the Tel book function.
- 2) After the power is on and first performed, “ Processing ” appears on the LCD screen momentarily. When this function is again performed, the telephone list comes immediately.
- 3) "telbook.txt" file is on MMC, and press the [∂] button, name of the person is shown on the LCD screen.
- 4) When the [∂∂] button is pressed, the name of the next person appears.
- 5) When the [⌘⌘] button is pressed, the name of the previous person appears.
- 6) When the [∂] button is pressed, the telephone number of selected person appears.
- 7) When the [€] button is pressed, the telephone book function is canceled and the music is played.
- 8) In order to use the telephone book function, MMC has to have “telbook.txt” file.
- 9) In order to make “telbook.txt” file, the edition to fit in to the following format document editor has to

be made.

Name1#Telephone number1
Name2#Telephone number2
Name3#Telephone number3
Name4#Telephone number4

is used as a special mark that it is not used as name or telephone number.

Name is supported with up to 16 characters.

Telephone number is supported with up to 16 characters.

10) Support is made up to the maximum of 256 persons.

English to English Dictionary Function

1) It searches the English to English dictionary stored in MMC.

ε Setting Up of English to English Dictionary Function

1) Press the Menu button and search the [⌘⌘] button or [∂∂] button to shown “13. E2Dictionary” on the LCD screen, press the [∂] button to set the English to English Dictionary function.

2) After the power is on and first performed, “ Processing ” appears on the LCD screen momentarily. Then when this function is played again, English to English Dictionary comes immediately.

3) “e2edic.txt” file is in MMC, and the [∂] button is pressed to show the English to English Dictionary contents appear on the LCD screen.

4) When the [∂∂] button is pressed, following vocabulary appears.

5) When the [⌘⌘] button is pressed, previous vocabulary appears.

6) When the [∂] button is pressed, the meaning of the selected vocabulary appears.

7) When the [€] button is pressed, the English to English Vocabulary function is canceled and the music is played.

8) In order to use the English to English Vocabulary function, “e2edic.txt” file has to be made in MMC.

9) In order to make “e2edic.txt” file, the edition is made with the document editor as the following format.

Word1#Meaning of Word1&
Word2#Meaning of Word2&
Word3#Meaning of Word3&
Word4#Meaning of Word4&

and & are used as special mark that these are not used as the words or meanings.

Words are supported with 16 characters.

Meanings are supported with 128 characters.

10) It supports up to the maximum of 64 words.

4. Cautions

ε When an electrical shock or physical impact is applied while listening to music, the software of our product may determine to have abnormality to the currently playing song that it automatically plays the next song.

This is to prevent the stoppage that is caused by mistake or defect of the product.

⌘ Do not apply strong impact.

DMP2010 is not effected at all when walking or exercising, but may be damaged when it is dropped from a high place or impact with heavy object.

⌘ Do not have water applied to the product.

When water gets into the product, the internal parts of the product are damaged and problems ensued for the product.

In the event the product has water on the surface, wipe off with cloth immediately, and when abnormality is detected, inquiry to the Openers Service Center.

⌘ Storage of Product

Avoid the places of oily and humid places.

Avoid the places of strong magnetic field.

Avoid the place of strong heat.

⌘ Use of Battery

Always use the new batteries.

When mixing the new battery with old battery, severe heating generation may occur and may damage the product.

5. Check Before Use

⌘ After the product is opened, confirm the component lists.

⌘ Prepare the Product Guarantee Statement.

6. When You Feel a Breakdown (Problem Solution)

1) When the stop button is pressed for over 2 seconds, and the power is not out

⌘ Check whether the stop button is correctly pressed.

- Press the stop button for more than 2 seconds.

2) When the power is not on even with the Play button pressed

⌘ Check whether the HODL button is on.

- Turn off the HODL button and press the Play button again to turn on the power.

⌘ Confirm whether battery or charger is in.

- Confirm the polarity (+, -) of battery or charger and insert it.

⌘ Check whether battery or charger is exhausted.

- Charge the new battery or charger to confirm the polarity (+,-) and then insert.

3) In the event the LCD is on but the music is not played

⌘ Confirm whether the remaining battery or charger is sufficient.

- Charge the new battery or charger and use it.

4) LCD is momentarily turned on and immediately turned off

⌘ Confirm whether MMC is inserted in the slot.

- Insert MMC to the accurate direction to the slot.

5) Music in played but the sound is not made

⌘ Confirm whether the volume is minimum.

- Use the volume button (+) to press one step at a time or press continuously until appropriate sound is heard.

⌘ Confirm whether the content is in MMC.

- Songs in MP3, WMA, AAC and others insert to MMC by using MMC Writer.

- 6) When the song is continuously popped during the play
 - ⌘ Confirm the remaining life of the battery or charger
 - It is the phenomenon that is shown when the battery is weak that the new battery or charger is charged to replace and use it.
- 7) When the functional conversion is not operated appropriately (repeating function, song search function, block repeat function, mode conversion)
 - ⌘ Confirm whether the button is accurately pressed.
 - Accurately press the button for over the proposed time in each of the function.
- 8) When trying to download the control program on the player by using the download program, the downloading is not made
 - ⌘ Check whether the serial cable and the Com Port connection is properly done at the rear part of computer.
 - ⌘ Finish the program and re-start to try again.
 - ⌘ In down loading, change the port setting.

7. Recommended Sites and Related Information

⌘ Internet Site

1. <http://www.m4you.com/>
2. <http://www.audiofind.com/>
3. <http://mp3.now.com/>
4. <http://www.allmp3.co.kr/>
5. <http://mp3.lycos.com/>
6. <http://www.mp3.com/>

⌘ PC Telecommunications

Naunuri

GO MBCLIVE, MBCLIVE MP3

GO KBSLIVE, KBSLIVE MP3

GO UGMP3, Underground MP3

GO PDSSING, Making New Star for New Singer

Unitel

GO MSTATION, Lyric and MP3 Information Room

GO MP3M, MP3 Music Channels

GO MRADAR, Music Data

GO COCO, KoKo MP3 Generator

Chollian

GO KASA, Lyric and MP3 Information Room

GO SINGSING, SINGSING MP3 Information Room

GO MP3, Online Music Bank

Hitel

GO MBCLIVE, MBCLIVE MP3

GO KBSLIVE, KBSLIVE MP3

⌘ The above information may be changed in accordance with the situation of each telecommunication company.

8. Product Specification

- ⌘ Processor : Cirrus Embedded Processor (with ARM Core)
- ⌘ Memory : Multi-Media Card (MMC) 32M (expandable)
- ⌘ Power : 1.5V * 2 batteries (AAA)
- ⌘ Continuous use time : Approximately 10 hours
- ⌘ Mark device : Liquid Crystal Display (LCD)
- ⌘ File transmission speed : 130Kbyte/sec
- ⌘ Earphone outlet : MAX 2.5mW/CH
- ⌘ Frequency : 20Hz - 20KHz
- ⌘ Size : 60.0mm (H) * 81.0mm (W) * 22.0mm (D)

9. Product Guarantee Statement

- ⌘ Product Guarantee Statement

10. Service Information (A/S)

Openers Co., Ltd. Customer Service Center

- ⌘ Address : Sungji Building 2/F, 499 Wolpyong 1-dong, Seo-gu, Taejon City Zip Code. 302-281
- ⌘ Tel : 042) 487 1117
- ⌘ FAX : 042) 487 9229
- ⌘ Homepage : <http://www.openers.co.kr/>
- ⌘ E-mail : openers@openers.co.kr
- ⌘ Service Center : 080-545-0101