



Quick Installation Guide

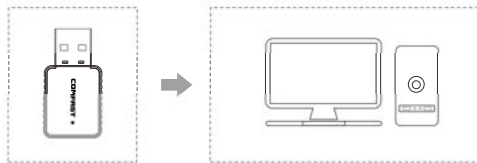


Realtek Driver Installation
M0304322 Version2.0

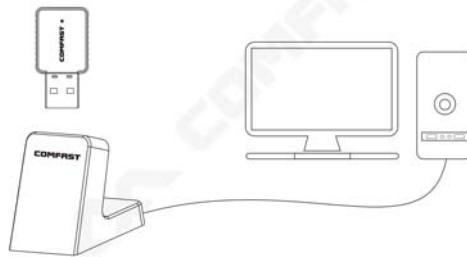
1 Hardware Installation

Here are two methods to install the usb adapter

1. Please insert the usb adapter directly into the computer's USB port.



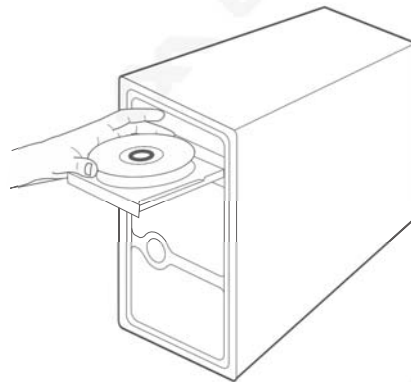
2. Connect the USB port of the computer through the USB extension cable base. (USB extension base is sold separately)



Note: When using the desktop, it is recommended to use the USB extension cable base to connect the rear interface of the computer chassis.(Most of the desktop computer's front USB interface is underpowered or unavailable), extended to the desktopUse, the effect is better!


2 Driver Installation

1.Put the CD driver into the computer drive.




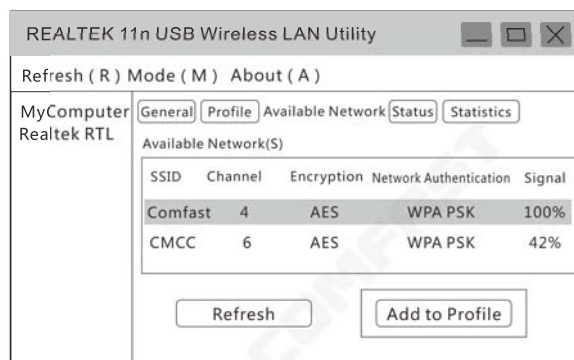
2.Open the driver folder and double click the installation file "Setup.exe" .Click "Next"to finish the installation.
(Note : If the installation file is a compressed package, you need to extract it to install it.)



3.After finishing the installation, in the lower right corner of the taskbar, [REALTEK Client Management Software ] appears, indicating the installation succeed..

3 Network Connection Settings

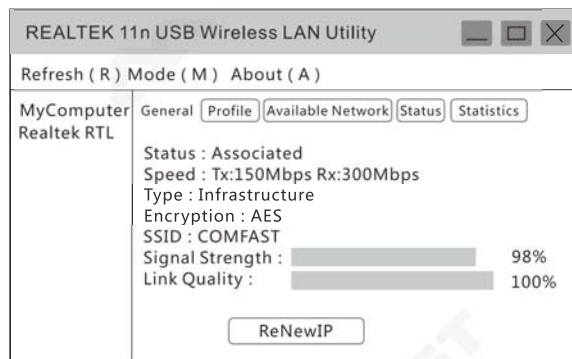
1. Double-click the wireless network card management icon  to open the network card client management software.
2. Click on the upper menu "Available Network", select the wireless network SSID you want to connect to, and then click "Add to Profile" as shown below:



3. Enter the network key, Confirm the network key, click as shown below:




4. After the connection is successful, the signal strength and link quality are displayed, as shown below:

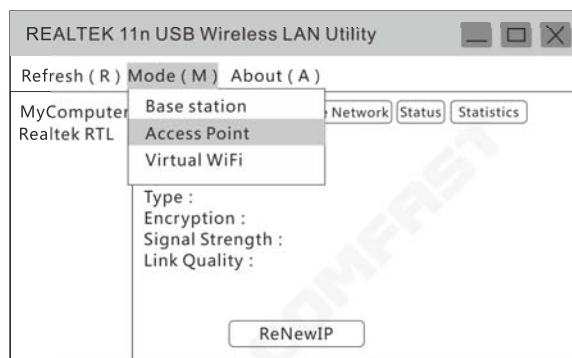


Note: If you do not get the IP address or receive the data packet, it may be the password input error, please re-enter the correct password to regain the IP. For the network with fixed IP address, you need to Set the IP address.

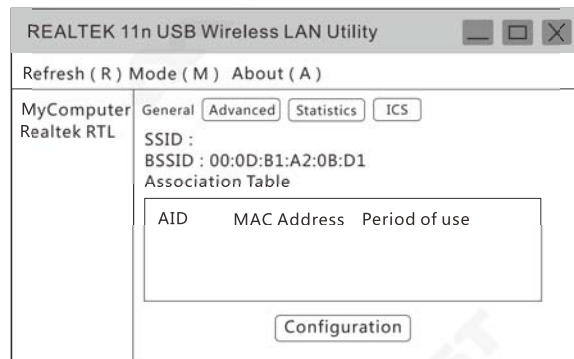
4 WiFi Transmitter Settings

(Note: Win10 system does not support this feature)

1. Click on the management software  menu [Mode] to select [Access Point], as shown below:

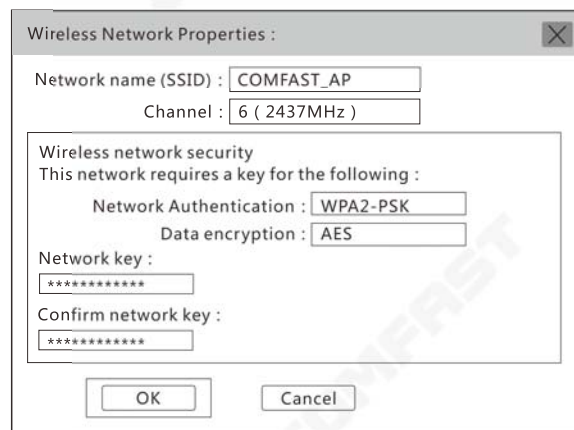


2. After switching to access point mode, the SSID displays the name of the computer, as shown below:

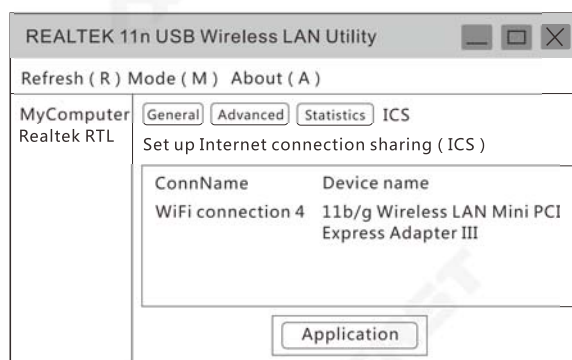


Note: The default of the computer name is WiFiSSID.
The default is no password. If you need to use the password and change the SSID, please see the following operations.

3. Click on the image above **Configuration** to open the Wireless Network Properties Settings dialog to set the network name (SSID), channel, encryption algorithm and password. Click **OK**



4. Click "ICS" to select the network connected to your computer, click , as shown below:
(Win7 system interface will be a bit different here, the setting method is the same)



5. Set it according to your network type and select the network you are using. If the network is bound to IP address and MAC address or is restricted to use by a single computer, it can not share the network.

If the setting is not successful, please share the network manually (see Setting up a network share manually).

Note:

- A. Connect to the computer through Modem (cat), use the computer broadband connection to dial, here must choose "broadband connection";
- B. Connect the line from the router or switch to the Internet. Here, select the name of the interface card corresponding to the local connection (usually the default);
- C. If the wireless network card that comes with the notebook is connected to the wireless network, select the name of the interface card of the wireless network card;
- D. If you use the 4G network card to access the Internet, select the interface card name of the 4G network card.

Maintenance Regulations

Dear Valued Clients,

Thank you for purchasing **COMFAST** products. To protect your rights and interests in after-sales service, please read the following maintenance regulations.

The following does not belong to free maintenance, our company can provide paid service, please note:

- Failure to require the installation manual, use, maintenance, storage led to product failure or damage;
- Beyond the limited warranty, the warranty period;
Unauthorized alteration, tearing up the product bar code;
- Without authorization to change the settings file or inherent disassemble;
- Unexpected factors or human actions lead to product damage, such as improper input voltage, temperature, watermechanical damage, break, rust or oxidation product of serious, etc;
- Other non-product itself, design, technology, manufacturing, quality and other quality problems caused by the failure damage.

Customer Data

Name	
Address	
Model	
MAC No.	
Machine unit sales	
Sale of machine address	
Date of sale machine	
TEL	
Post Code	
Invoice No.	

Certificate Of Qualification

Quality Inspector _____

Production Date _____

Executive Standard _____



Copyright Information

Statement

**Shenzhen Four Seas Global Link Network
Technology CO.,Ltd.Company
all rights reserved.**

Without ours official writ permission, no unit or individual shall be copied, reproduced, transcribed or translated in part or whole book. In any form or by any means(electronic,mechanical,printing,recording or other possible means)or for the propagation of goods any commercial, profitable purposes.

COMFAST is the registered trademark of Shenzhen Four Seas Global Link Network Technology Co.,Ltd.Company. All other trademarks or registered trademarks mentioned in this document, by respective owners.

Product specifications and information mentioned in this manual are for reference on subject to updates without notice. Unless there are other special agreed, this manual is used only as a user guide. All statements, information, etc. are not constitute any form of guarantee

Manufacturer: Shenzhen Four Seas Global Link Network
Technology Co.,Ltd.Company
Address: Room 607-610,Block B Tao JINDI Electronic
Business Incubation Base, Tenglong Road, Longhua
District, Shenzhen, China
Hotline: +86 755 83790059
Website: en.comfast.com.cn

FCC Statement

This equipment has been tested and found to comply with the limits for a Class B digital device, pursuant to part 15 of the FCC rules.

These limits are designed to provide reasonable protection against harmful interference in a residential installation. This equipment generates, uses and can radiate radio frequency energy and, if not installed and used in accordance with the instructions, may cause harmful interference to radio communications. However, there is no guarantee that interference will not occur in a particular installation. If this equipment does cause harmful interference to radio or television reception, which can be determined by turning the equipment off and on, the user is encouraged to try to correct the interference by one or more of the following measures:

- Reorient or relocate the receiving antenna.
 - Increase the separation between the equipment and receiver.
 - Connect the equipment into an outlet on a circuit different from that to which the receiver is connected.
 - Consult the dealer or an experienced radio/TV technician for help.
- To assure continued compliance, any changes or modifications not expressly approved by the party.

Responsible for compliance could void the user's authority to operate this equipment. (Example- use only shielded interface cables when connecting to computer or peripheral devices).

This equipment complies with Part 15 of the FCC Rules. Operation is subject

to the following two conditions:

- (1) This device may not cause harmful interference.
- (2) This device must accept any interference received, including interference that may cause undesired operation.

FCC Radiation Exposure Statement:

The equipment complies with FCC Radiation exposure limits set forth for uncontrolled environment. This equipment should be installed and operated with minimum distance 0 cm between the radiator and your body.