

April 17, 2013

Retlif Testing Laboratories tested following device:

Equipment Tested: 318 MHz Transmitter

Model Number: MWT A12

Reference: R-1952P-1

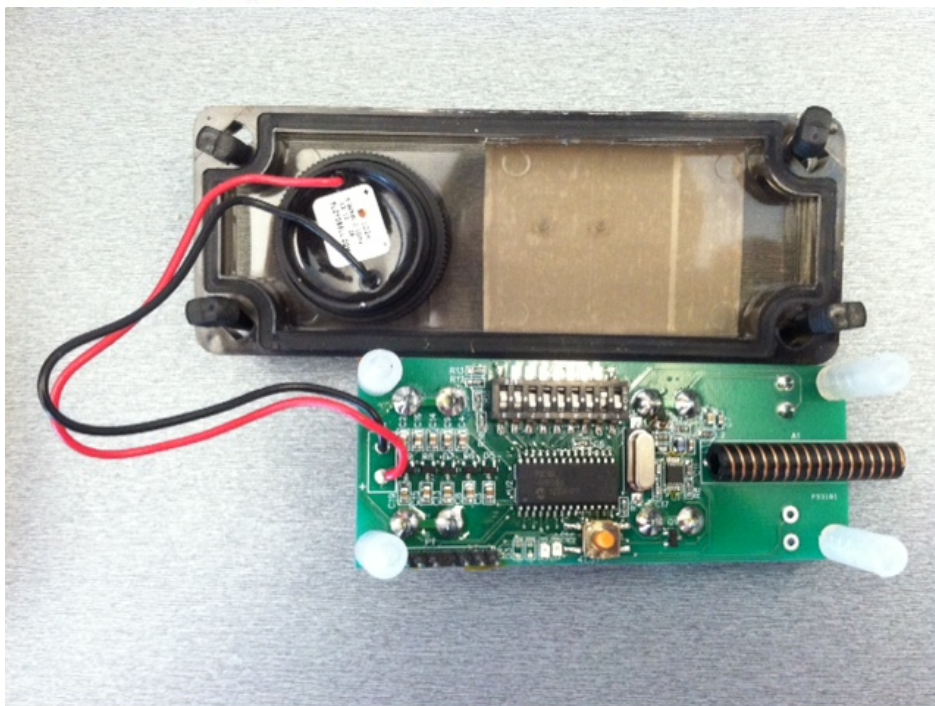
Miller Edge management would sell the model number MWT12 in addition to MWT A12. MWT12 is the transmitter without the alarm. MWT A12 and MWT12 have the same RF section and the same digital electronics except that MWT A12 has alarm. Both models could have 1 or 2 TB installed in the production unit. Attached pictures show the difference between the two units.



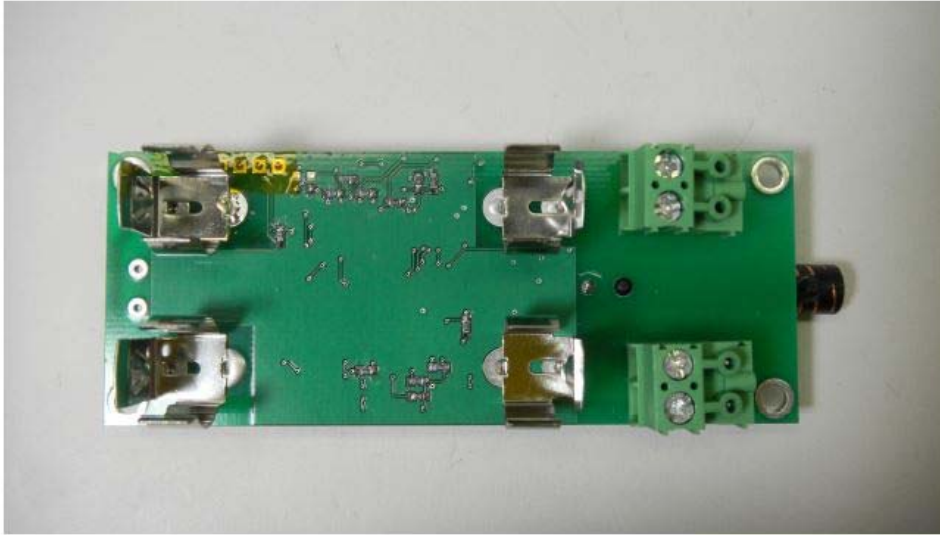
MWT A12 and MWT12 : Assembled Unit



Transmitter PCB, top side, with Larsen/Pulse helical antenna.

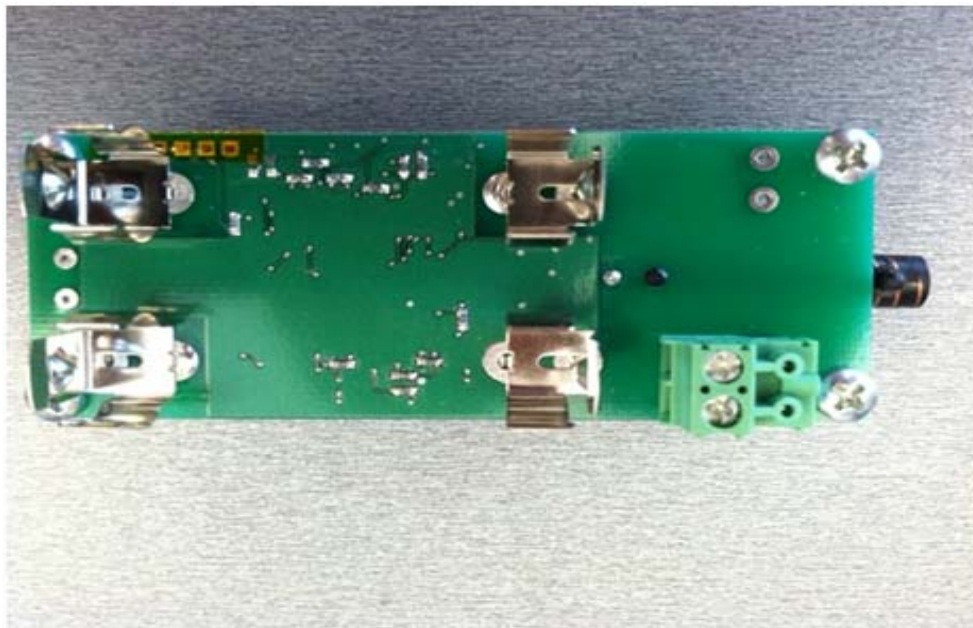


Transmitter board with Alarm.



Transmitter PCB, bottom side, ready for batteries and safety edge wiring connections.

Note: the 2<sup>nd</sup> channel input terminal block (T. B. in upper right corner) may optionally not be populated.



Transmitter board with only one terminal block.

Vinay Sao  
Engineering Manager  
Miller Edge Inc.