

EXHIBIT A



2, avenue Gay-Lussac - 78851 Elancourt Cedex - Tel +33 (0) 1 34 81 60 00

SATCOM AERO-I

JETSAT PRODUCT

**IDENTIFICATION LABEL
AND
PHOTOGRAPHS**

♦ This document includes : 20 pages

NE 935 529 AN Issue 0

Elancourt, March 20th, 2000

DOCUMENT FOLLOWUP

PROJECT :	TITRE : SATCOM AERO-I - JETSAT PRODUCT IDENTIFICATION LABEL AND PHOTOGRAPHS	REFERENCE : NE 935 529 AN Issue 0
ACTION	NAME	DATE SIGNATURE
DRAFTED BY	M. JURQUET G.	March 2000
APPROVED BY	M. FERRE G.	
CONTROLLED BY	M. PABOEUF P.	

RECORD OF REVISIONS

INDEX	DATE	REVISIONS	NAME
0	20 March 2000	Creation	G. JURQUET

CONTENT

1. APPLICANT	1
2. PURPOSE.....	1
3. IDENTIFICATION LABEL DRAWING AND PLACEMENT	2
4. PHOTOGRAPHS OF EQUIPMENT	5

1. APPLICANT

THOMSON-CSF DETEXIS

2, avenue Gay-Lussac

78851 ELANCOURT Cedex

FRANCE

Tel: 33 1 34 81 60 00

Fax: 33 1 30 66 79 66

E-Mail: gilles.jurquet@detexis.thomson-csf.com

2. PURPOSE

This document gives the photographs and identification label for the JETSAT SATCOM AERO-I AES following units:

- High power amplifier, Low noise amplifier, Diplexer (HLD)
- Satellite Data Unit (SDU)

3. IDENTIFICATION LABEL DRAWING AND PLACEMENT

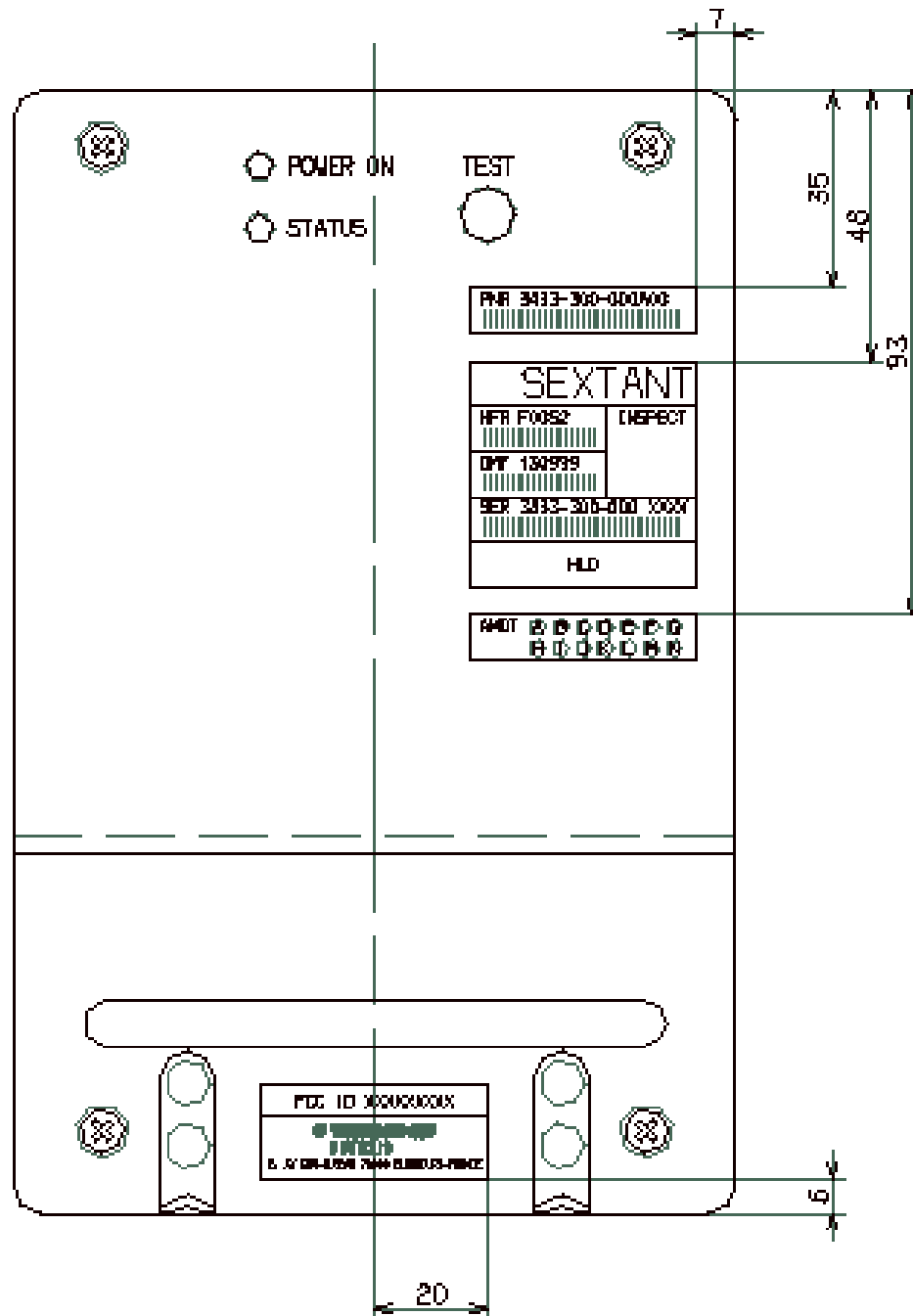


Figure 1: HLD FRONT FACE

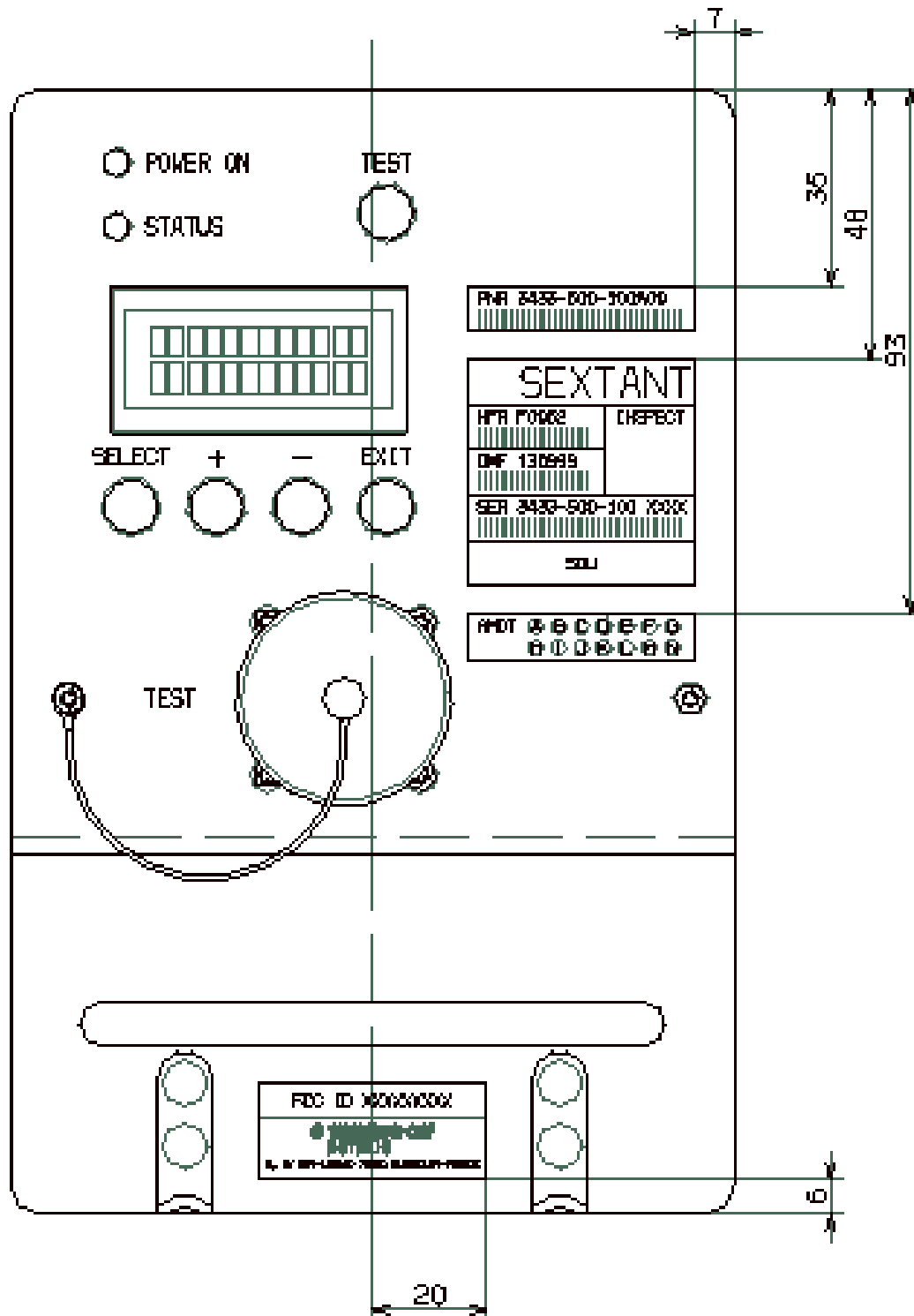
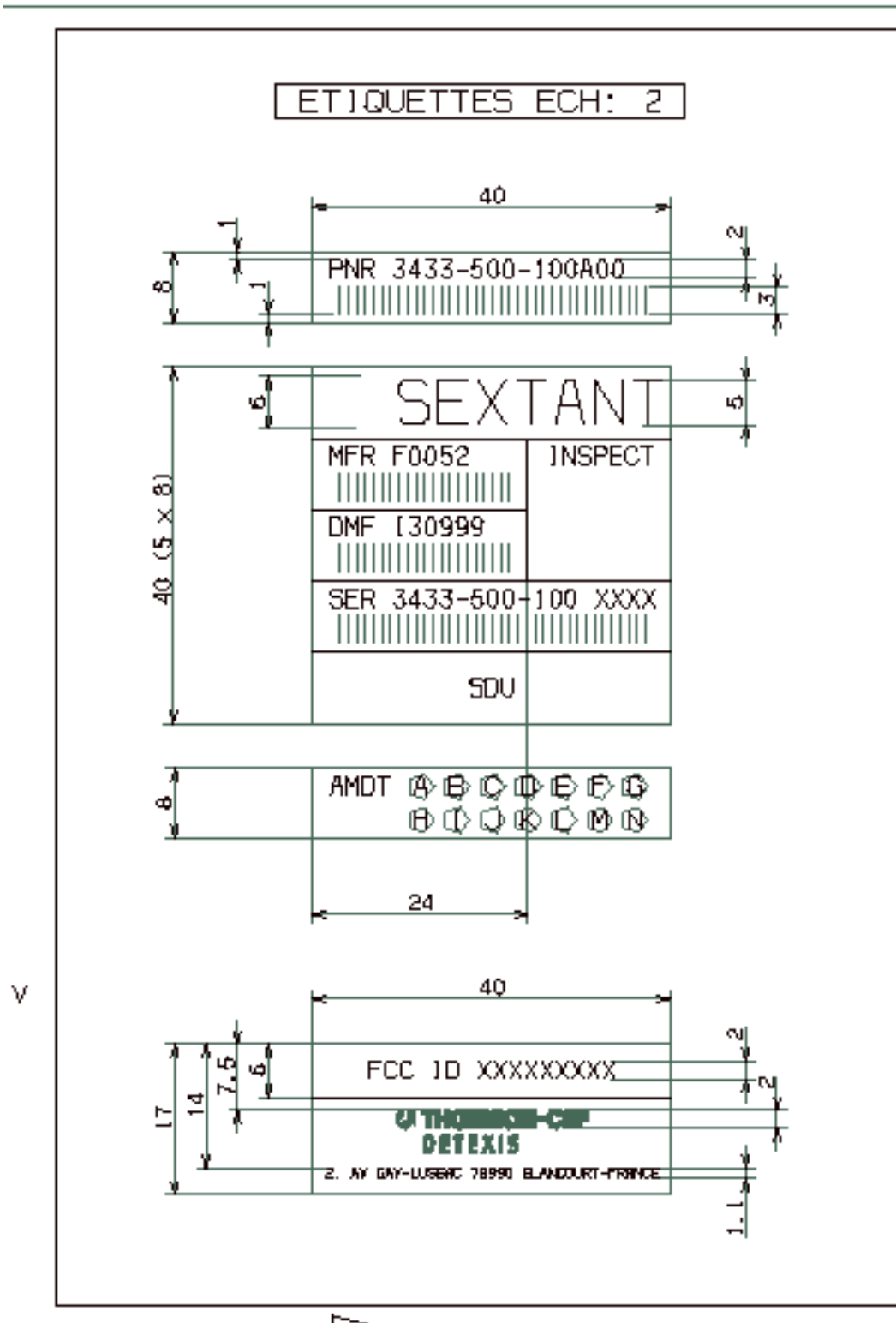


Figure 2: SDU FRONT FACE

**Figure 3: IDENTIFICATION LABEL**

All dimension in mm.

4. PHOTOGRAPHS OF EQUIPMENT

List of Photographs:

FIGURE 4: HLD AND SDU – EXTERNAL VIEW

FIGURE 5: HLD - INTERNAL VIEW WITH POWER SUPPLY BOARD

FIGURE 6: HLD - ACU BOARD

FIGURE 7: SDU - INTERNAL VIEW

FIGURE 8: SDU – CORE MODULE - MAIN BOARD – SIDE 1

FIGURE 9: SDU - CORE MODULE - MAIN BOARD - SIDE 2

FIGURE 10: SDU - C_CHANNEL - SIDE 1

FIGURE 11: SDU - C_CHANNEL - SIDE 2

FIGURE 12: SDU - AVIONICS INTERFACE BOARD

FIGURE 13: SDU - EMI BOARD

FIGURE 14: SDU - MCTU BOARD

FIGURE 15: SDU - FRONT PANEL BOARD

NOTE: Only side 1 of the board is shown if no electronic component is implemented on the other face.



Figure 4: HLD and SDU – External view

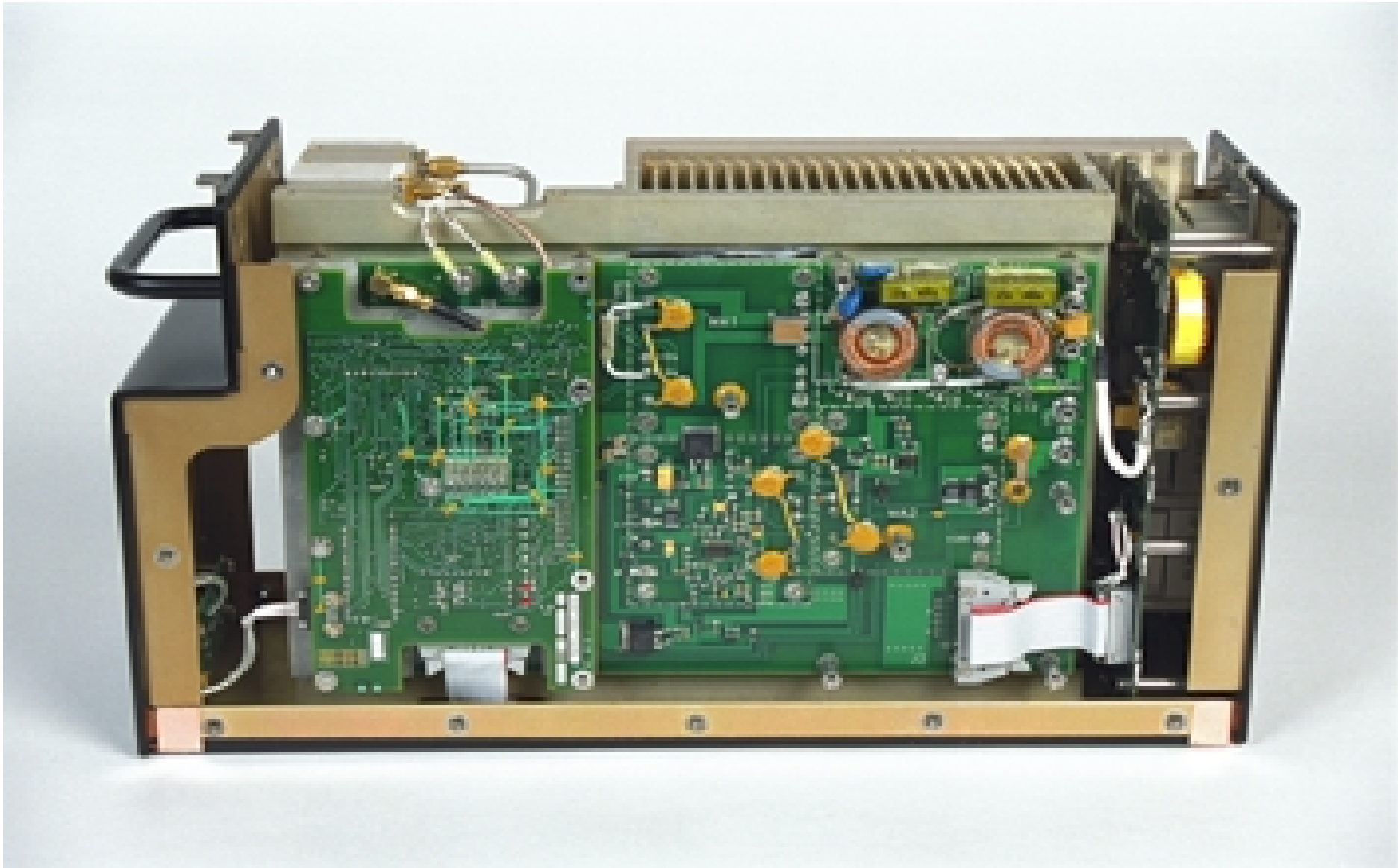


Figure 5: HLD - Internal view with power supply board

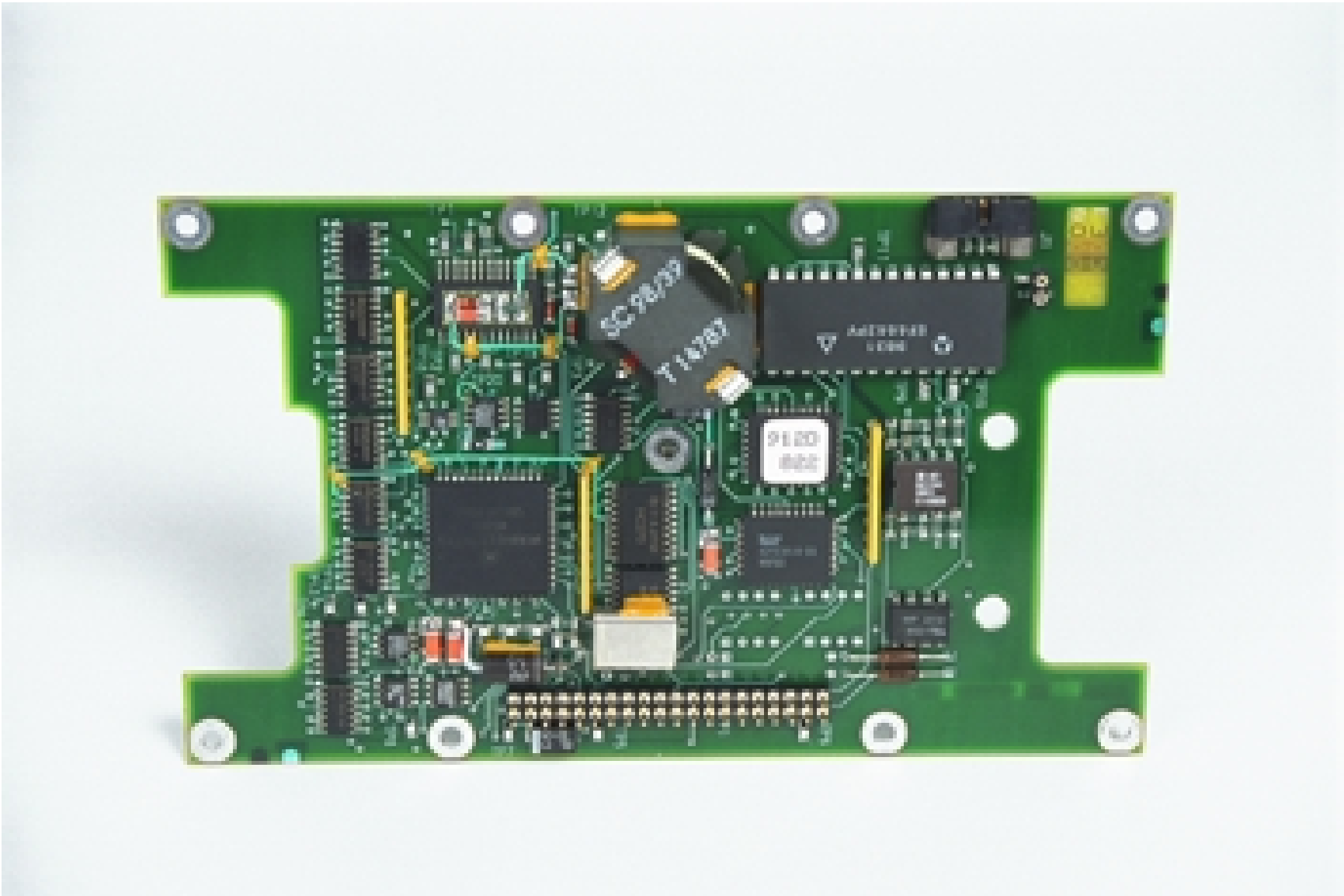


Figure 6: HLD - ACU Board



Figure 7: SDU - Internal view

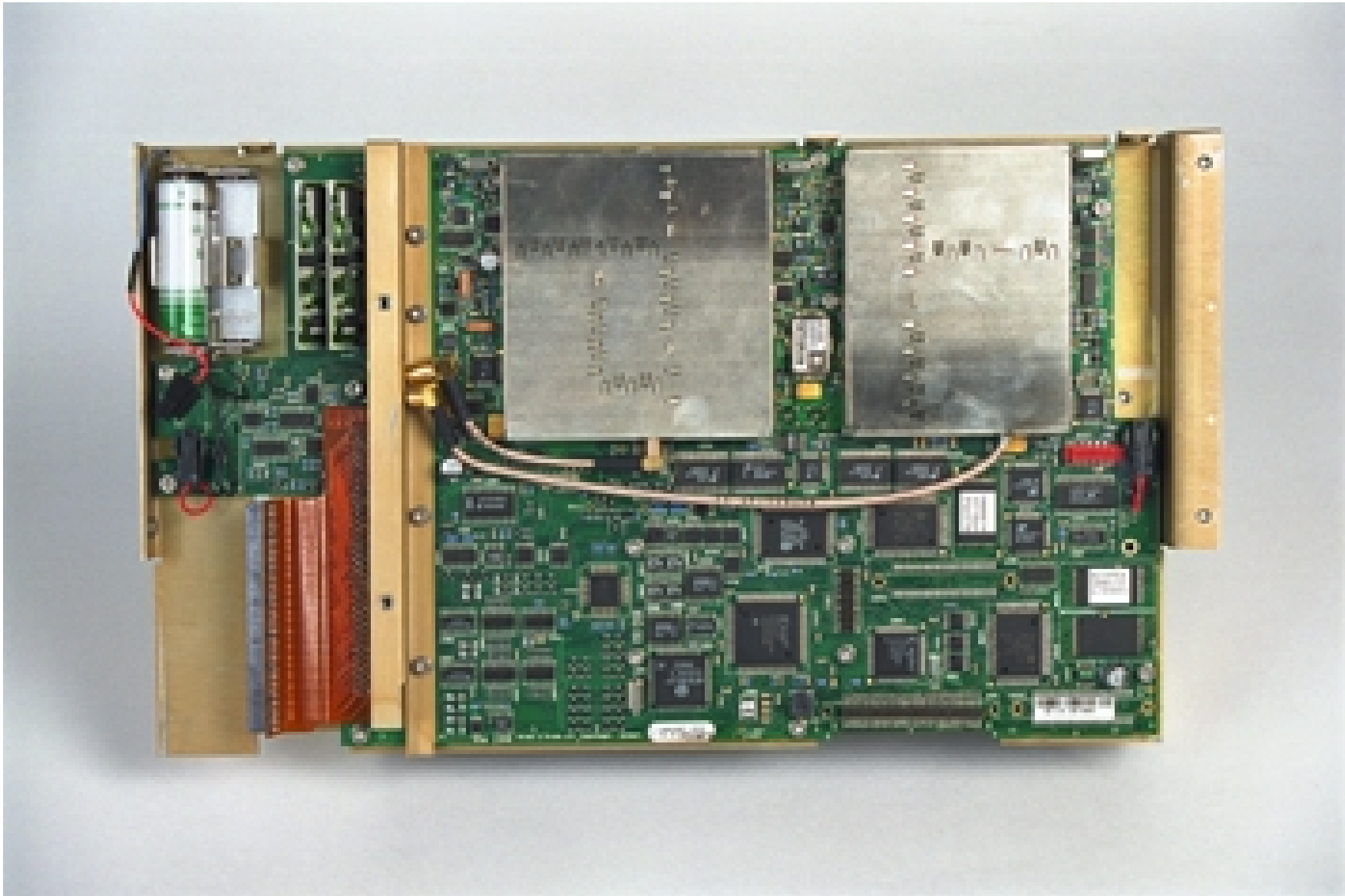


Figure 8: SDU – Core Module - Main Board – Side 1

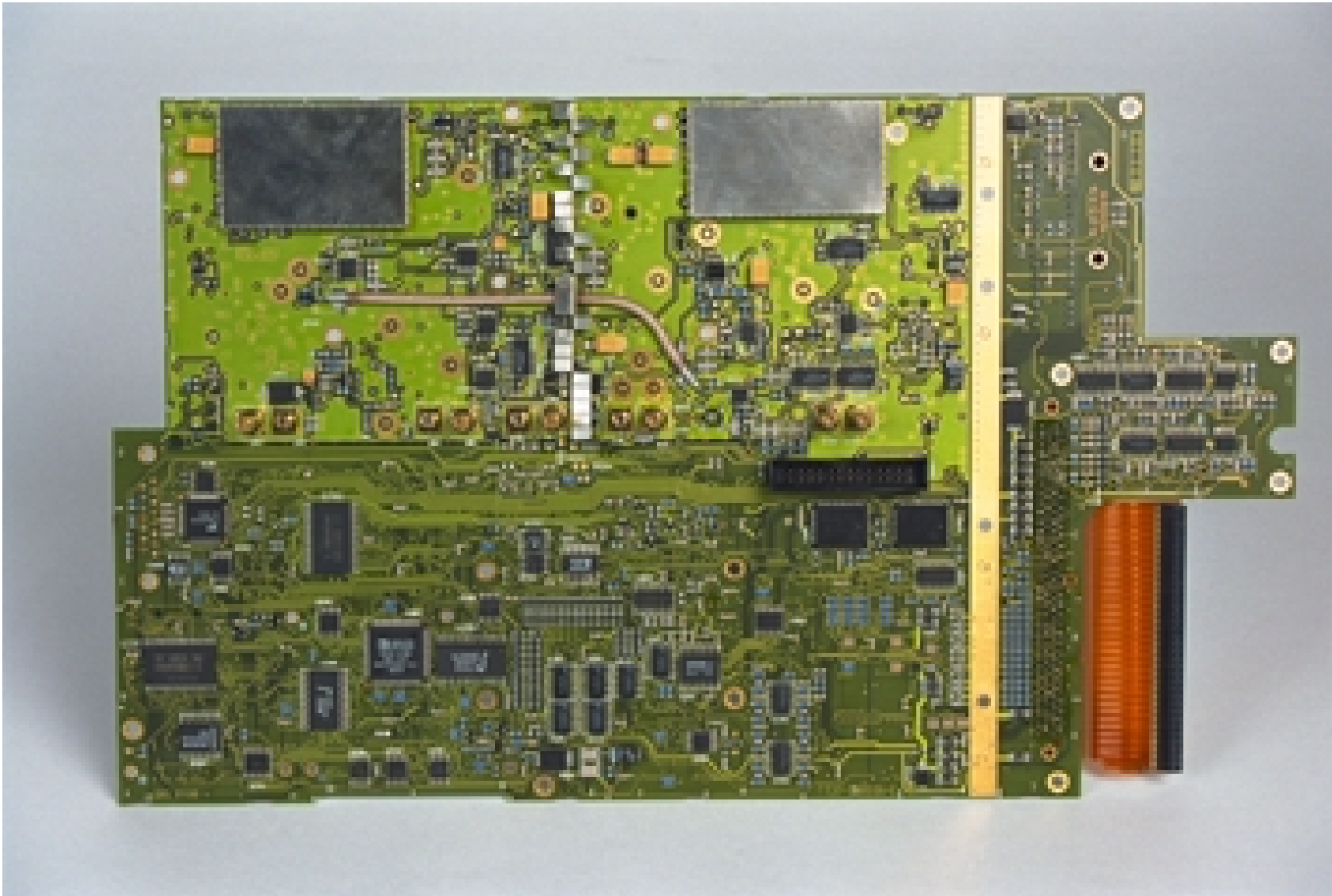


Figure 9: SDU - Core Module - Main Board - Side 2

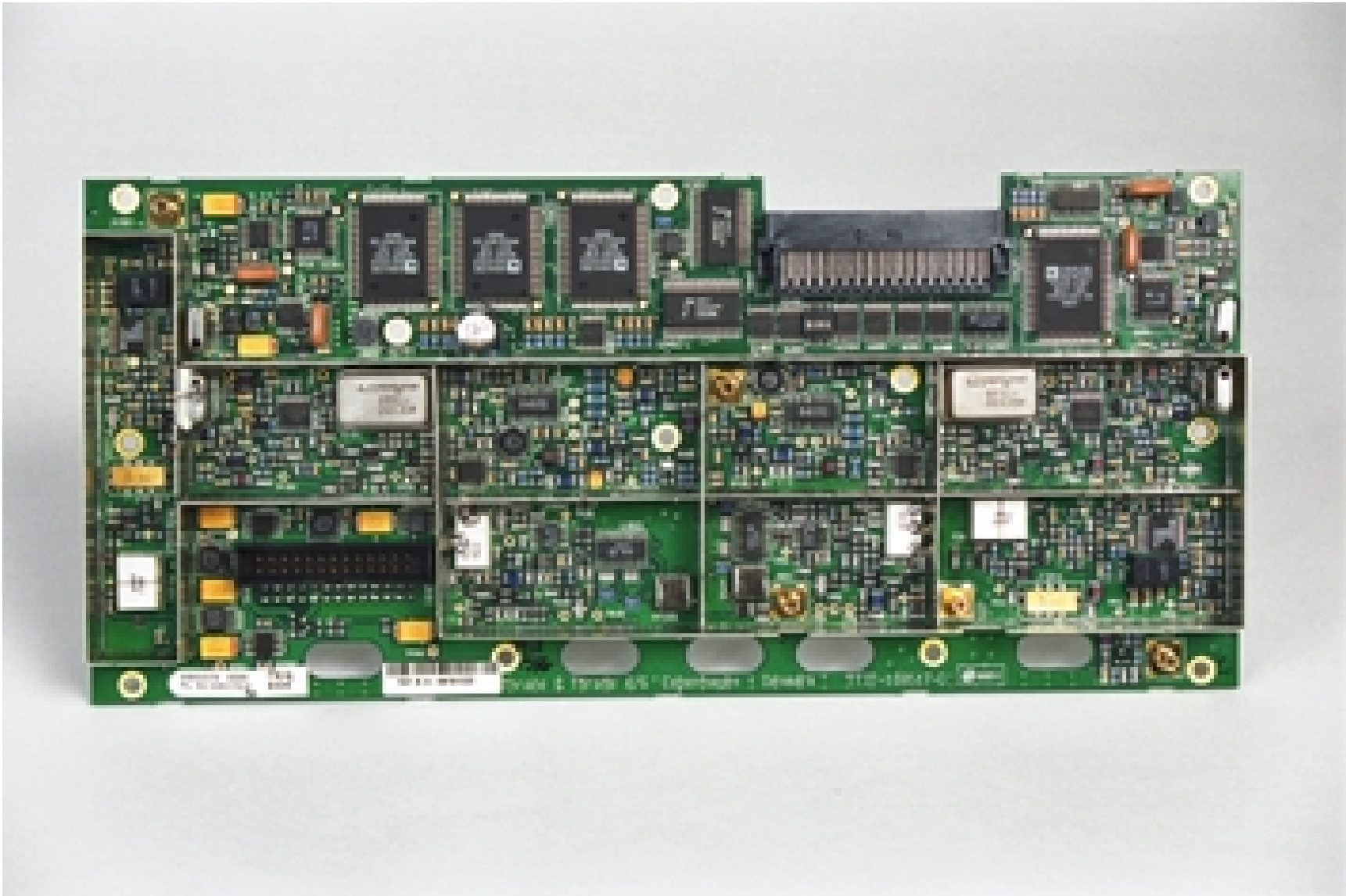


Figure 10: SDU - C_Channel - Side 1

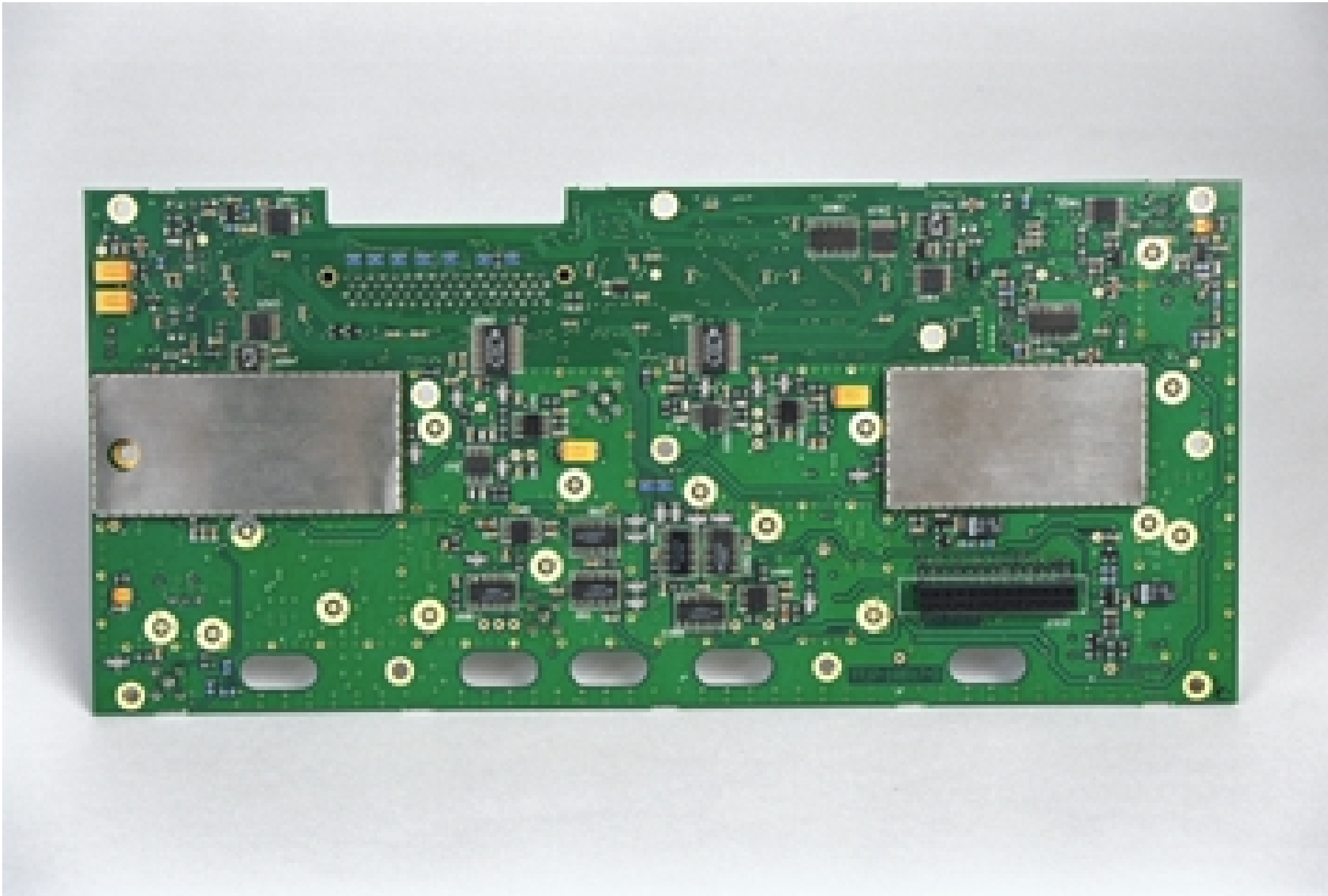


Figure 11: SDU - C_Channel - Side 2

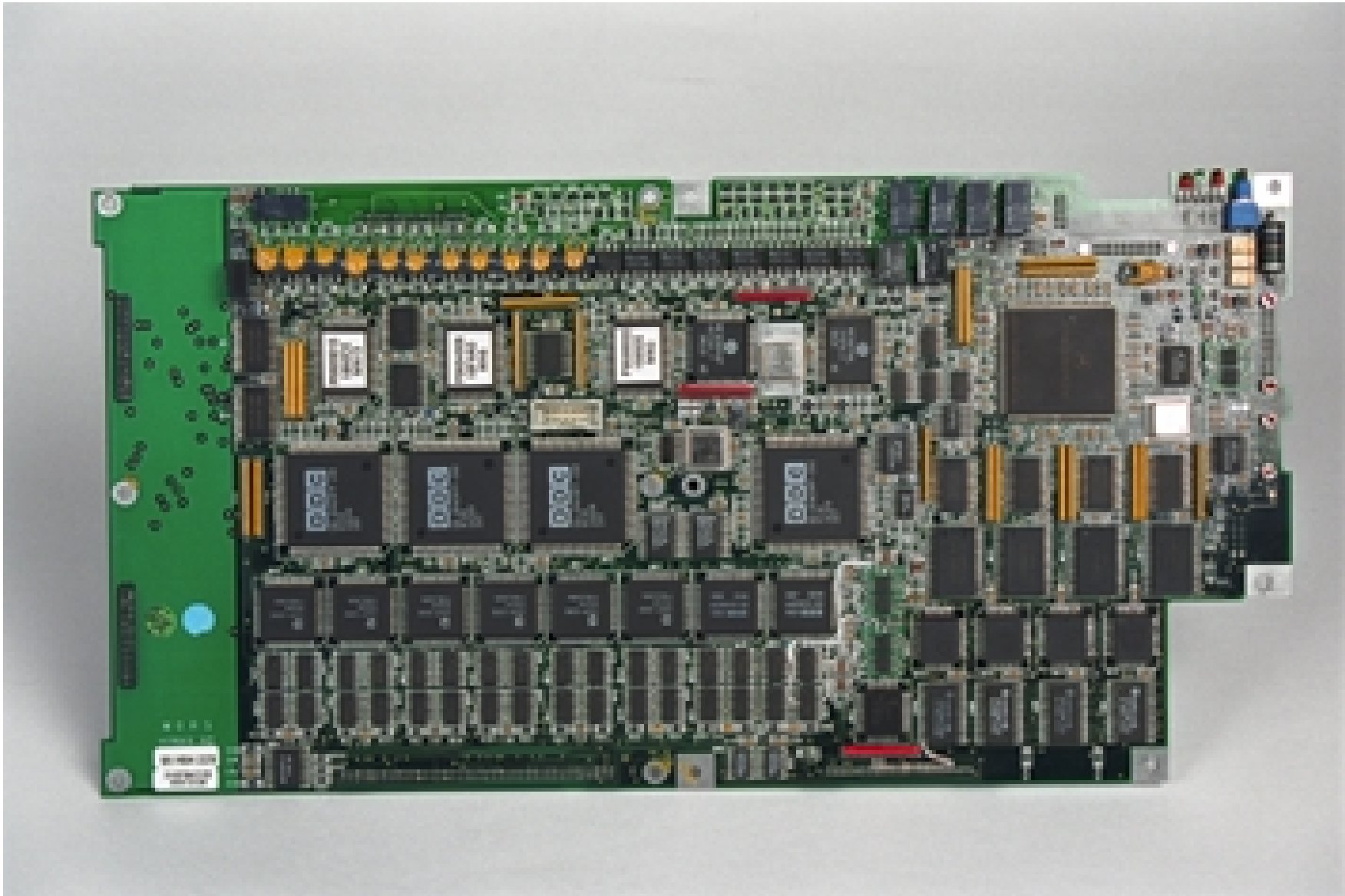


Figure 12: SDU - Avionics Interface Board

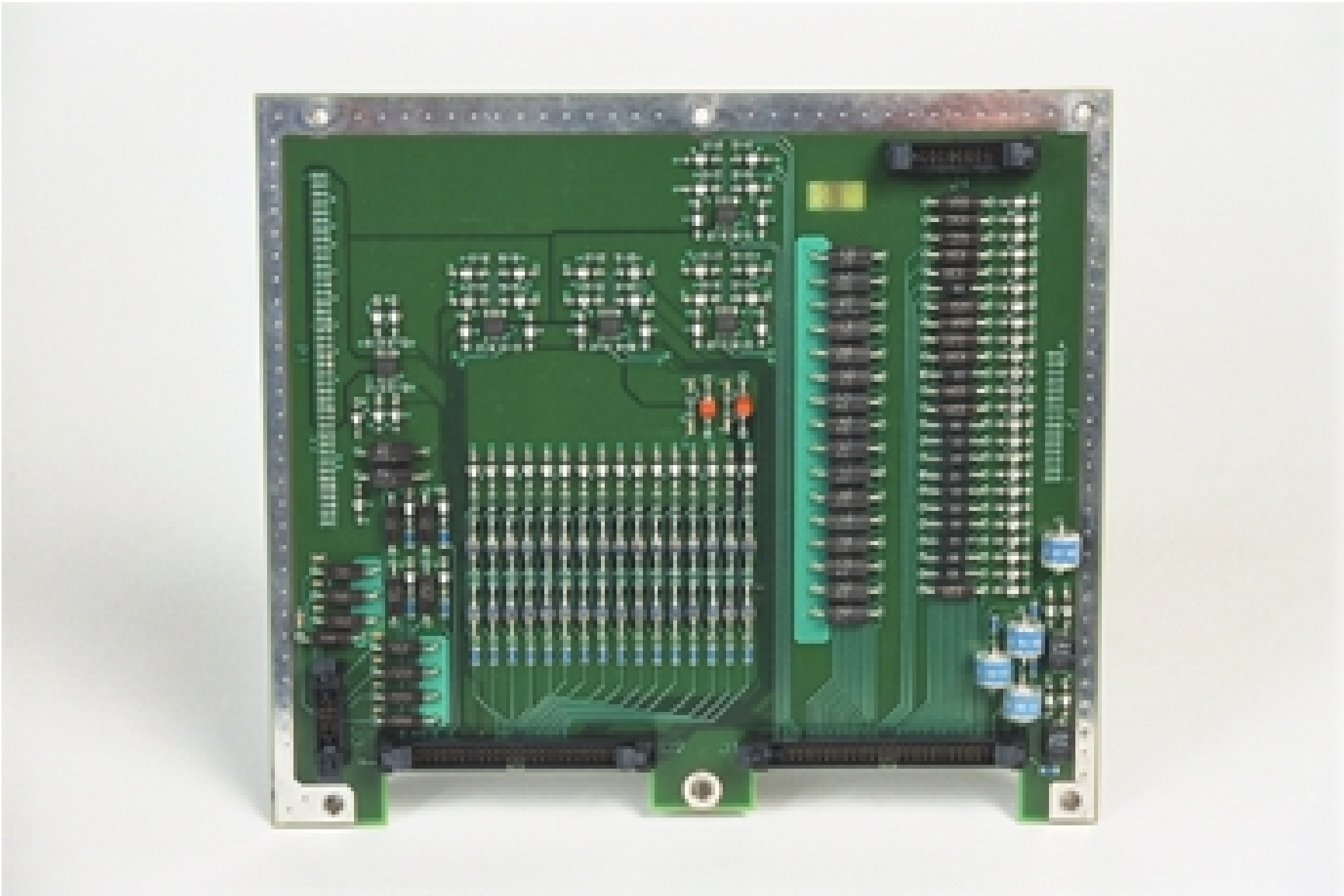


Figure 13: SDU - EMI Board



Figure 14: SDU - MCTU Board

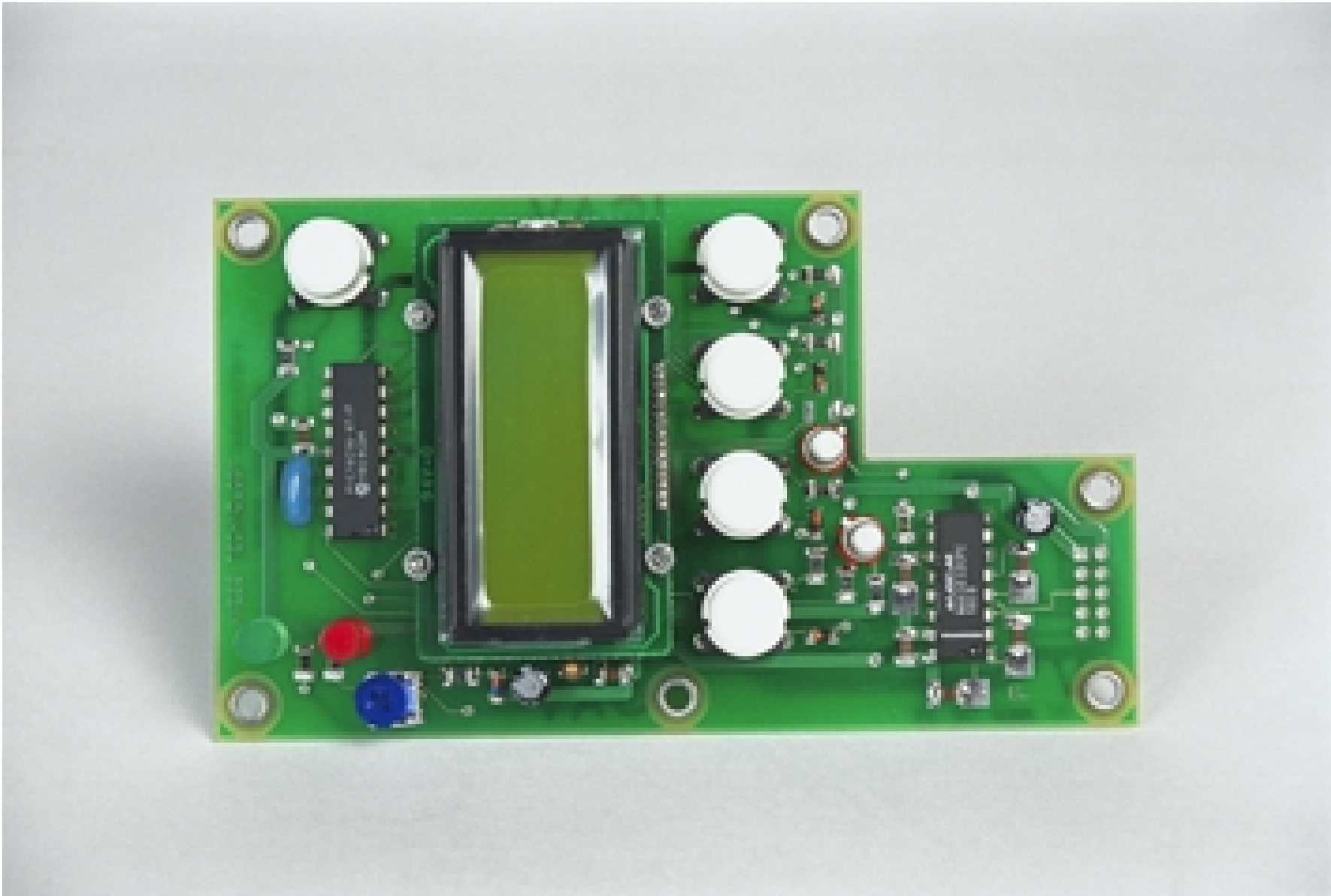


Figure 15: SDU - Front Panel Board