

User's Guide

21.5" LCD Tablet Monitor Series

Safety Information

Read all of these instructions Save these instructions for later use, please.

1. Follow all warnings and instructions marked on the monitor.
2. This monitor should be operated only from the type of power source indicated on the marking label. If you are not sure of the type of power supplied in your home, consult your monitor dealer or local power company.
3. This monitor is equipped with a three-wire grounding type plug, a plug having a third (grounding) pin. This plug will only fit into grounding-type power outlet. This is a safety feature. If you are unable to insert the plug into the outlet, contact your electrician to replace your obsolete outlet. Do not defeat the safety purpose of the grounding-type plug.
4. The socket outlet shall be near the equipment and shall be easily accessible. Do not overload wall outlets and extension cords as this can result into fire or electric shock.
5. Do not allow anything to rest on the power cord. Do not locate this monitor where the cord will be abused by persons working on it.
6. Do not place this monitor on an unstable cart, stand, or table. The monitor may fall, causing serious injury to a child or adult and serious damage to the appliance. Use only with a cart or stand recommended by the manufacturer or sold with monitor. Wall or shelf mounting should follow the manufacturer's instructions, and should use a mounting kit approved by the manufacturer.
7. Slots and openings in the cabinet and the back or bottom are provided for ventilation, and to insure reliable operation of the television receiver and to protect it from overheating, these openings must not be blocked or covered. The openings should never be blocked by placing the monitor on a bed, sofa, rug, or other similar surface. This monitor should never be placed near or over a radiator or heat register. This monitor should not be placed in built-in installation such as a bookcase unless proper ventilation is provided.

8. Do not use this monitor near water. For example near a bathtub, washbowl, kitchen sink, or laundry tub, in a wet basement, or near a swimming pool, etc.
9. Unplug this monitor from the wall outlet before cleaning. Do not use liquid cleaners or aerosol cleaners. Use a damp cloth for cleaning.
10. Never push objects of any kind into this monitor through cabinet slots as they may touch dangerous voltage points or short out parts that could result in a fire or electric shock. Never spill liquid of any kind on the monitor.
11. For added protection for this monitor, when it is left unattended and unused for long periods of time, unplug it from the wall outlet. This will prevent damage to the monitor due to power-line surges.
12. Do not attempt to service this monitor yourself since opening or removing covers may expose you to dangerous voltage or other hazards. Refer all servicing to qualified service personnel.

Contents

1. Introduction and Installing.....	1
1.1 Packing List	1
1.2 Product Overview	1
1.3 Tablet Driver Installing	4
1.4 Software Installation	4
2. Setup and Operation Guide.....	5
2.1 Recommend Display Resolution.....	5
2.2 Screen Calibrating and Pen setup.....	5
2.3 OSD Function and Setup.....	7
3. Troubleshooting	9
3.1 Display problems	9
3.2 Interactive Pen Problems	10
4. Product Specifications	11
4.1 Monitor	11
4.2 Tablet.....	12
4.3 VGA Connector.....	12
5. Appendix.....	13
Appendix A. Replacing the Pen tip.....	13
Appendix B. Factory set display modes.....	14

1. Introduction and Installing

1.1 Packing List

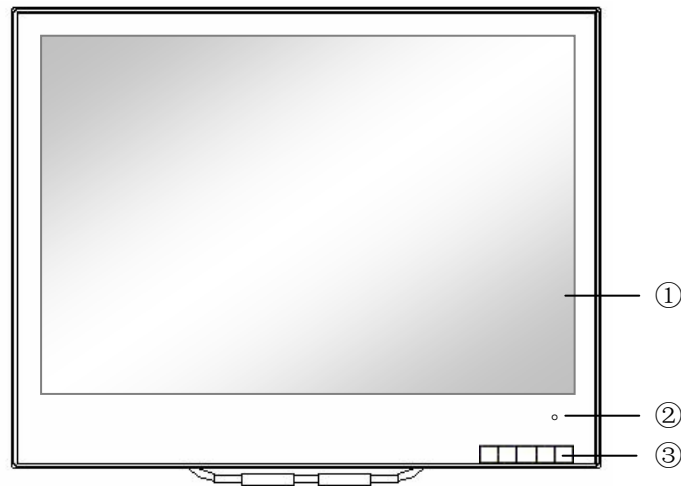
After unpacking, make sure that all of the following contents are included:

- Tablet Monitor
- Power adapter and power cord
- Pen Kits Package
- VGA and USB 2 in 1 cable (attached)
- User's guide and Driver CD

If there is a defect or missing part, please contact the agency where you purchased the product.

1.2 Product Overview

1.2.1 Front View

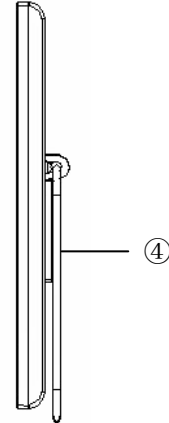


① Display and pen touch area

- ② Power indication: When the monitor is working, the indicator turns steady green. When the monitor is in saving mode, the indicator turns flickering.

- ③ Control buttons:

- ⏻ : Power on/off
M : Menu and Enter
▶ : Move Adjustment (up)
◀ : Move Adjustment (down)
🖥️ : VGA output switch

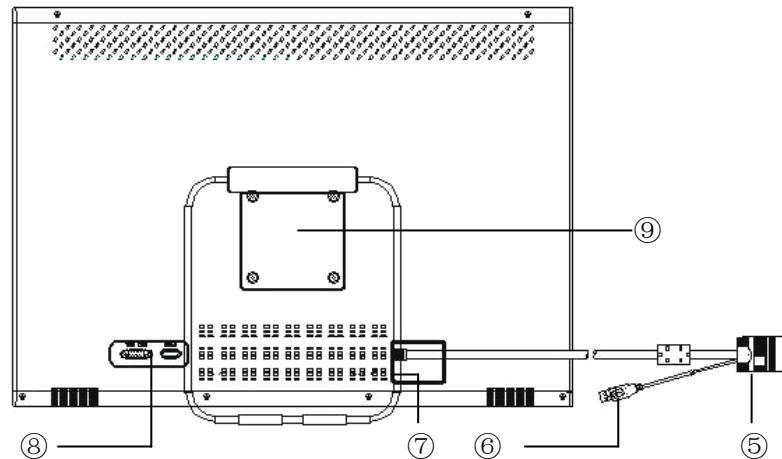


1.2.2 Side View

- ④ Stand: allow you to adjust it to an optimal viewing angle.

CAUTION: Make sure the angle of the monitor is at least 10 degrees from the vertical; otherwise the monitor will be unstable and could fall over.

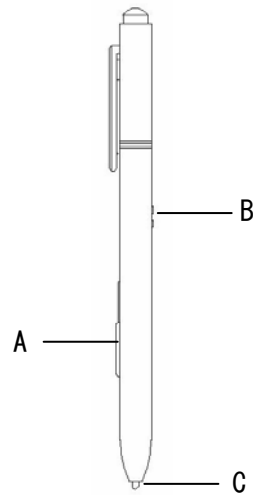
1.2.3 Rear View



- ⑤ VGA input cable: Plug it into VGA port of your computer.

- ⑥ USB cable: Plug it into USB port of your computer.
- ⑦ DC input: Plug the adapter port to DC input socket.
- ⑧ VGA output: to external display equipment. (Such as a projector & larger screen display, etc.)
HDMI input: to HDMI device.
- ⑨ VESA mount: this monitor can be hung on the wall with the VESA mount adapter.

1.2.4 Interactive Pen



- A: Side Button: it is equivalent of right-key of a mouse when you keep the default setting.
- B: Charger connector: Note the polarity of the USB Charger when you to charge up the battery with pen.
- C: Pen Tip: When the tip gets too short or develops a sharp edge, you can replace it with one of the spare tips that came with the pen as Appendix A.


Note: This interactive pen may be subject to change without prior notice. And product picture is for reference only; actual product may differ from the picture.

1.3 Tablet Driver Installing

1.3.1 OS compatibility

- 1) Before installing the monitor, make sure your PC Operation System (OS) is Windows XP, Windows Vista, Windows 7 and MAC 10.2.8 or above.
- 2) Without install Tablet driver for Windows Vista and Windows 7 Premium version or above, they include a Tablet PC application module and already built in your computer with Windows system installing.

1.3.2 Tablet Driver Installing

- 1) Insert the Driver CD into the CD-ROM; open the “Driver” folder.
- 2) Then execute “TouchPanel setup” and will appear the launch page.
- 3) Click go on and follow the prompts to install the driver software.
- 4) After complete the installation, you can see an  icon on the system tray and make sure you can use your pen on the screen to move the cursor.

1.4 Software Installation

1.4.1 MyScript Stylus

Note: MyScript Stylus compliant with Windows XP. Without install this software for Windows Vista and Windows 7 Premium version or above, they includes a Tablet PC application module and already built in your computer with Windows system installing.

- 1) Insert Driver CD into the CD-ROM; open “MyScript3.0” folder.
- 2) Then execute MyScriptStylus-3.0.11-Setup.exe to install.
- 3) Clicks go on and follow the prompts to install this application software.
- 4) Please find the Key code for MyScript Stylus on the CD cover.

2. Setup and Operation Guide

2.1 Recommend Display Resolution

The monitor's native resolution is 1920x1080, we recommends using this resolution at a refresh rate of 60 Hz.

2.2 Screen Calibrating and Pen setup


2.2.1 Screen Calibrating

1) After driver stalled, in first time for the operation, and after display mode changed, you will be prompted for information and to do a screen calibration program as below.

Please move Mouse Cursor to the Monitor which need to calibration and click left button (Press ESC or Mouse Right Button to abort).


Attention: Improper calibrate will affect the accuracy of the pen & cursor on the screen.

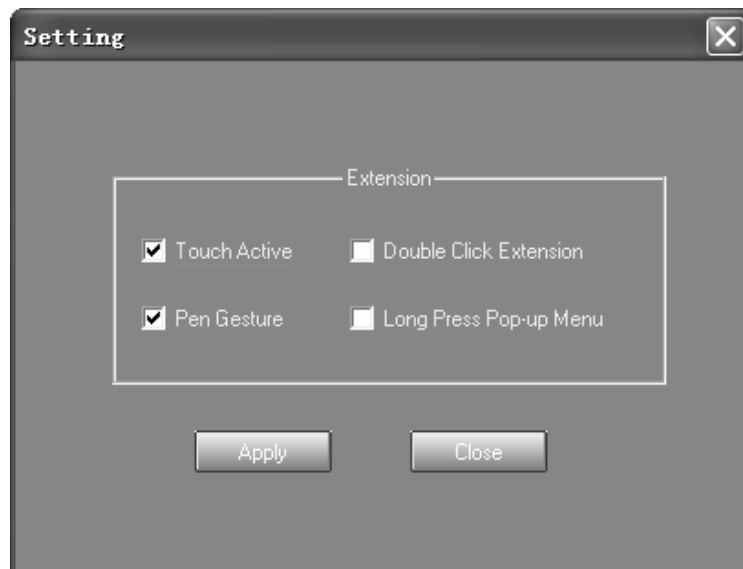
2) The screen calibrating program in operation in the future:

- a. Click the **Touch Control Panel** icon ().
- b. Select **Screen Setting** to calibrate.
- c. If you want cancel calibrate, press **Ext** to exit program.

2.2.2 Interactive Pen Setup

In addition to the function of handwriting (and drawing) stylus, it is equivalent to the role of the mouse, for default setting the side key is equivalent of right-key of mouse, if you need personalization setting, please refer following guide.

- 1) Click the **Touch Control Panel** icon ();
- 2) Select **Settings** tab, into **Extension** setup.



Windows 7 (or Vista) system, click the **Start** icon → **Control Panel** → select **USB Tablet**

2.2.3 About pen pressure sensitive

- 1) The pen support 1024 levels pressure. To draw with pressure, select a pressure-sensitive tool from your application's tool palette, when you press your pen tip lightly, it will show softer color or thin lines, and press harder for dense color or thick lines.
- 2) The interactive pen has an automatic power off (APO) function, if operating paused and over 20 minutes, click pen tip recall active status. If pen no function, please check a battery be recharged.

Note: Hold this pen the way you would hold a normal pen or pencil while writing on paper and the allowed pen input angle is 45° in any direction from a position.

2.2.4 Pen Battery Recharge

The interactive pen with built-in rechargeable battery, when the battery energy deficiency, a red indicator will light which build in pen side button, please uses the product distribution with USB charger for charging,

Note: please be sure the polarity of the USB Charger when you to charge up the battery with pen.

2.3 OSD Function and Setup

Press “M” button to activate OSD menu:



- 1) **Adjusting:** Auto adjust display mode to its utmost performance according to VGA setting.
- 2) **Contrast:** Adjust the image brightness in relation to the background.
- 3) **Brightness:** Adjust the image and background screen brightness.
- 4) **OSD Adjustment:** To adjust the OSD menu position and OSD menu time out.
- 5) **Language:** To section lists the languages supported by your

monitor.

- 6) **Reset:** Reset monitor to original settings.
- 7) **Select User Mode:** Selects color modes and adjusts red, green, and blue primary colors.
 - **sRGB mode:** Sets your screen colors to adapt to the color standards used in the image technology industry.
 - **Native mode:** White color a natural tint.
 - **Warm mode:** White color a 6500K Reddish tint.
 - **Cool mode:** White color a 9300K Bluish tint.
- 8) **Theme mode:** Include Normal, View, Film, Game, and Light picture modes, and On / Off select.
- 9) **Position:** To adjust the image horizontally or vertically position.
- 10) **H-Size:** Increase or decrease the horizontal size of image.
- 11) **Phase:** Adjust the focus of the display.
- 12) **Input Select:** This monitor can accept video signals through two different connectors. Most desktop computers use a D-SUB connector. Select digital among OSD Controls when you use HDMI connector.
- 13) **EXIT:** Exit the main menu or return to previous menu.

Note: Item 9)、10)、11) does not need adjustment In the absence of exceptional circumstances, because that have these parameters are adjusted to the best state by “Auto Adjustment”.

3. Troubleshooting

If you encounter problems with the monitor, please refer to the following tables.

3.1 Display problems

Problems	Suggested action
No power	1) Check the monitor's power switch is switched on. 2) Be sure the power cord is connected properly, and Be sure the outlet has power
No picture	1) Be sure the Signal Cable has been completely connected to the computer ; 2) Check that the computer is switched on, and check the computer are in standby or sleep mode, you need press your keyboard or move the mouse to reactivate the system 3) Adjust the resolution settings on your system to match the native resolution for this monitor. 4) If you use laptop PC, check that the external (RGB) output is selected.
Picture is gray	1) Adjust the contrast and brightness controls.
Picture is fuzzy	1) Be sure display resolution under recommend resolution
Missing one of the primary colors (R,G, B)	1) Inspect the monitor's video cable and make sure that none of the pins are bent or broke. 2) Check OSD R/G/B setting status.
Screen image is not centered or sized properly	1) Be sure display resolution under recommend resolution. 2) Try to Auto Adjust.

3.2 Interactive Pen Problems

Problems	Suggested action
The pen is no function	<ul style="list-style-type: none">* Check APO whether actives, click pen tip could recall active status.* Check the battery whether worn out? If yes, please replace the pen battery.* Try using mouse to double check, if mouse also no function, please restarting your computer or your application.* Try to reinstall the USB Tablet driver.
Pen nib is too short	<ul style="list-style-type: none">* Check whether the pen nib is too short. If yes, replace the pen nib.
The cursor move Incorrectly	<ul style="list-style-type: none">* Eliminate interference from nearby electrical devices.* Try restarting your computer for double check.
The side switch does not work	<ul style="list-style-type: none">* Be sure that when you press the side button, the pen tip is within 5mm of the display surface and your pen tip is not against the display surface.* Be sure that the side button is set to the proper function you are expecting to occur for the application.
The cursor is far out from pen tip	<ul style="list-style-type: none">* The accuracy of pen cursor please refers to section 4.2 specs, if you found over this specs, please refer section 2.2.1 to do the Screen Calibrating.

4. Product Specifications

4.1 Monitor

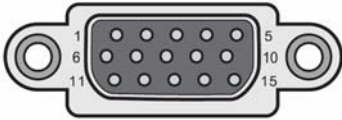
Item		Specification
LCD Display	Display type	21.5" TFT Wide / LED B/L
	Dimension	476.64mm(H)*268.11mm(V)
	Resolution	1920×1080
	Pixel pitch	0.24825×0.24825 mm
	Display colors	16.7M
	Viewing angles	right 85°, left 85°, up 80°, down 80°
Connector	Input	D-sub 15-pin (analog RGB) HDMI output
	Output	D-sub 15-pin (analog RGB)
Power supply	Type	External adapter
	Adapter in/out	Input 100-240VAC, 50/60 Hz, Output 12VDC 4A
	Rating input	DC12V/3A
Power Management	Max consumption	30W
	Energy efficiency	≥ 0.85W
	Power off	≤ 0.5W
PnP	DDC	DDC1/3/CI
Physicals	Stand adjustment	Tilt 10°~40°
	Mounting	VESA 75mm
	Unit dimension	454.4 x 361.8 x 26 mm
	Unit weight	Net 4.5kg, Gross 5.6kg
OS	OS compatibility	Windows 7/XP/VISTA, MAC 10.2.8 or above
Environmental	Temperature	Operating: 0~40°C, Storage: -20~60°C
	Relative humidity	Operating: 20~80%, Storage: 10~90%

4.2 Tablet

Item		Specification
Tablet	Resolution	2048 Lpi
	Tracking speed	138 DPS
	Pressure sensitive	1024 levels
	Accuracy	±0.5 mm(center), ± 3 mm (edge and corner)
I/O port	Communication	USB
Pen	Type	Wireless Active mode, rechargeable battery built in
	Charger	USB Charger
	automatic power off (APO)	Automatic power off actives if operating paused and over 20 minutes. Click pen nit could recall active status

Note: Specification may be subject to change without prior notice.

4.3 VGA Connector

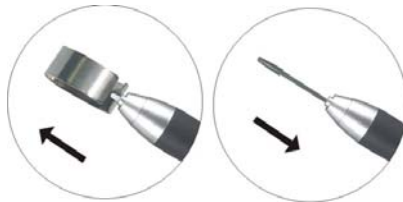
Fig	Pin and Definition	
	1) Red signal	9) 5VDC
	2) Green signal	10) Ground
	3) Blue signal	11) Ground
	4) Ground	12) SDA
	5) Detection	13) H sync
	6) Red ground	14) V sync
	7) Green ground	15) SCL
	8) Blue ground	

5. Appendix

Appendix A. Replacing the Pen tip

When the tip gets too short or develops a sharp edge, you can replace it with the spare tips. Please follow below step:

- 1) Use the tip replacement tool to pull the old tip straight out of the pen.



- 2) Insert a new pen tip into the stylus pen and push the tip until it stops.

Note: Tip replacement tool and spare tips are included.

Appendix B. Factory set display modes

No.	Resolution	H-Freq (kHz)	Refresh rate (Hz)
1	720×400	31.47	70
2	640×480	31.47	60
3	640×480	37.86	72.8
4	640×480	37.5	75
5	800×600	37.88	60.3
6	800×600	48.08	72.2
7	800×600	46.87	75
8	1024×768	48.36	60
9	1024×768	56.48	70.1
10	1024×768	60.02	75
11	1280×1024	63.98	60
12	1280×1024	79.98	75
13	1440×900	55.94	60
14	1440×900	70.64	75
15	1600×900	60.0	60
16	1680×1050	65.3	60
17	1920×1080	67.5	60

Note: Factory set display modes may be subject to change without prior notice.

FCC NOTE:

THE MANUFACTURER IS NOT RESPONSIBLE FOR ANY RADIO OR TV INTERFERENCE CAUSED BY UNAUTHORIZED MODIFICATIONS TO THIS EQUIPMENT. SUCH MODIFICATIONS COULD VOID THE USER'S AUTHORITY TO OPERATE THE EQUIPMENT.

This device complies with Part 15 of the FCC Rules. Operation is subject to the following two conditions: 1. This device may not cause harmful interference, and 2. This device must accept any interference received, including interference that may cause undesired operation.

Note: This equipment has been tested and found to comply with the limits for a Class B digital device, pursuant to part 15 of the FCC Rules. These limits are designed to provide reasonable protection against harmful interference in a residential installation. This equipment generates, uses and can radiate radio frequency energy and, if not installed and used in accordance with the instructions, may cause harmful interference to radio communications. However, there is no guarantee that interference will not occur in a particular installation. If this equipment does cause harmful interference to radio or television reception, which can be determined by turning the equipment off and on, the user is encouraged to try to correct the interference by one or more of the following measures:

- Reorient or relocate the receiving antenna.
- Increase the separation between the equipment and receiver.
- Connect the equipment into an outlet on a circuit different from that to which the receiver is connected.
- Consult the dealer or an experienced radio/TV technician for help.