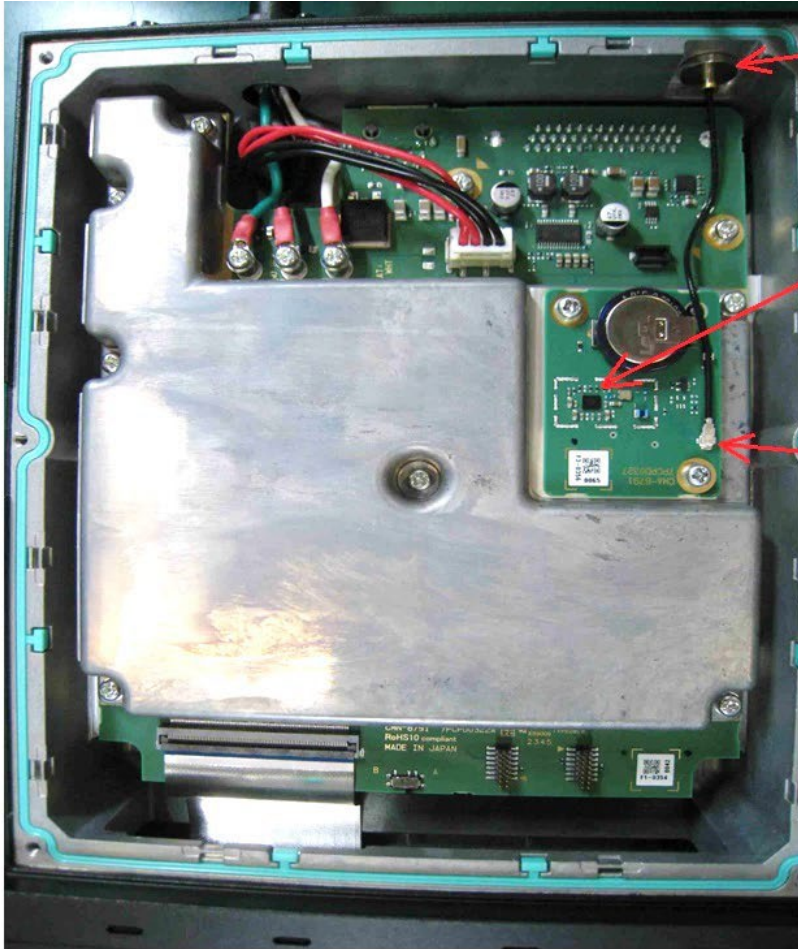


## XL-85M Internal Photos

Photo 1: XL-85M – RF, GPS Boards in Chassis



XL-85M GPS antenna connector at the rear of chassis.

GPS chip (IC) on GPS Board

GPS antenna cable connected to GPS Board

## XL-85M Internal Photos

Photo 2: GPS Board – Component Side

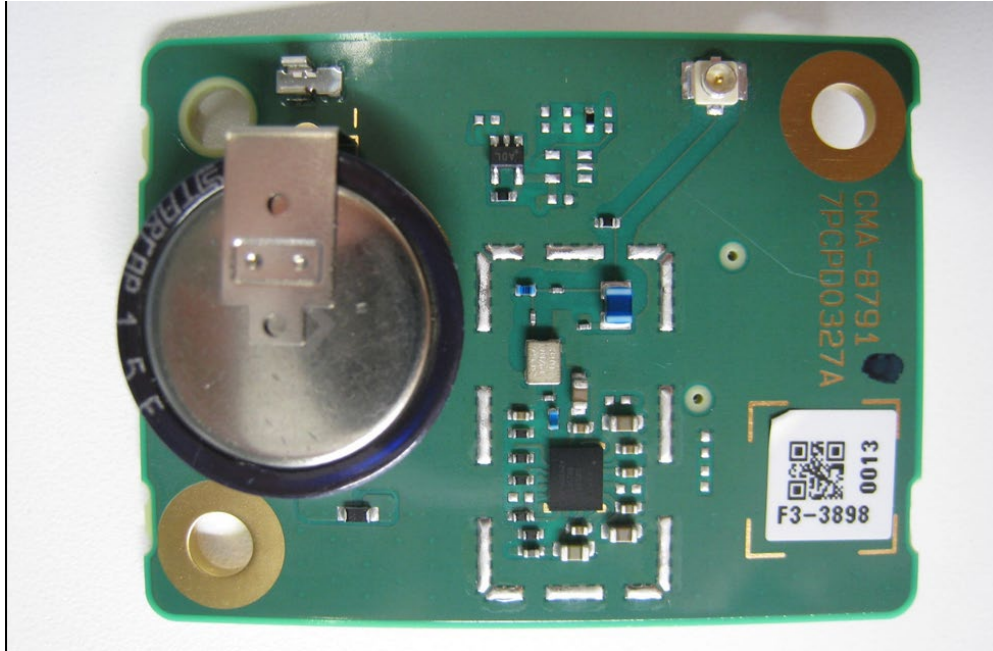
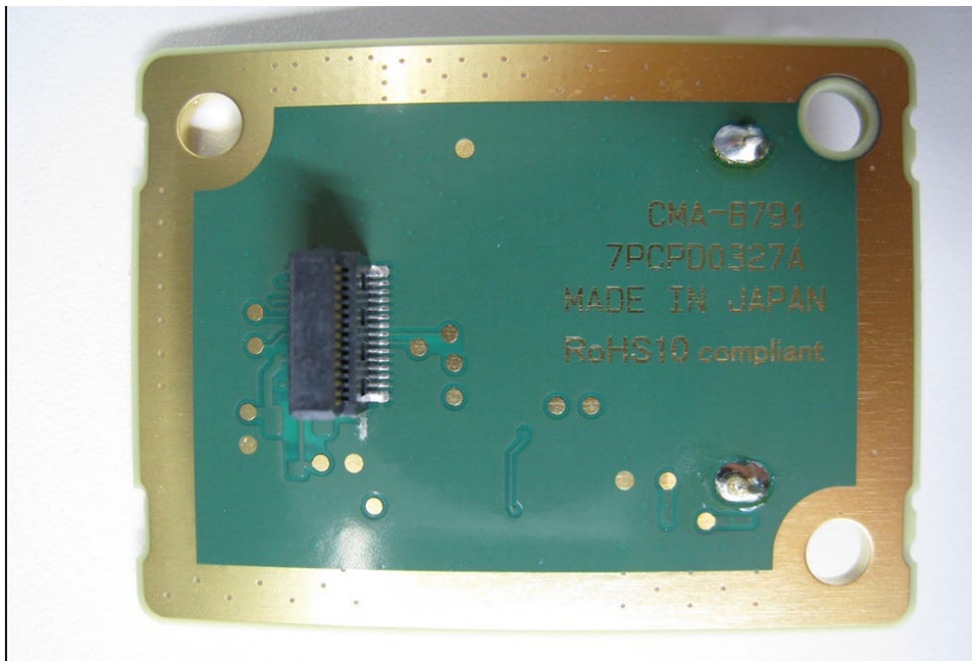


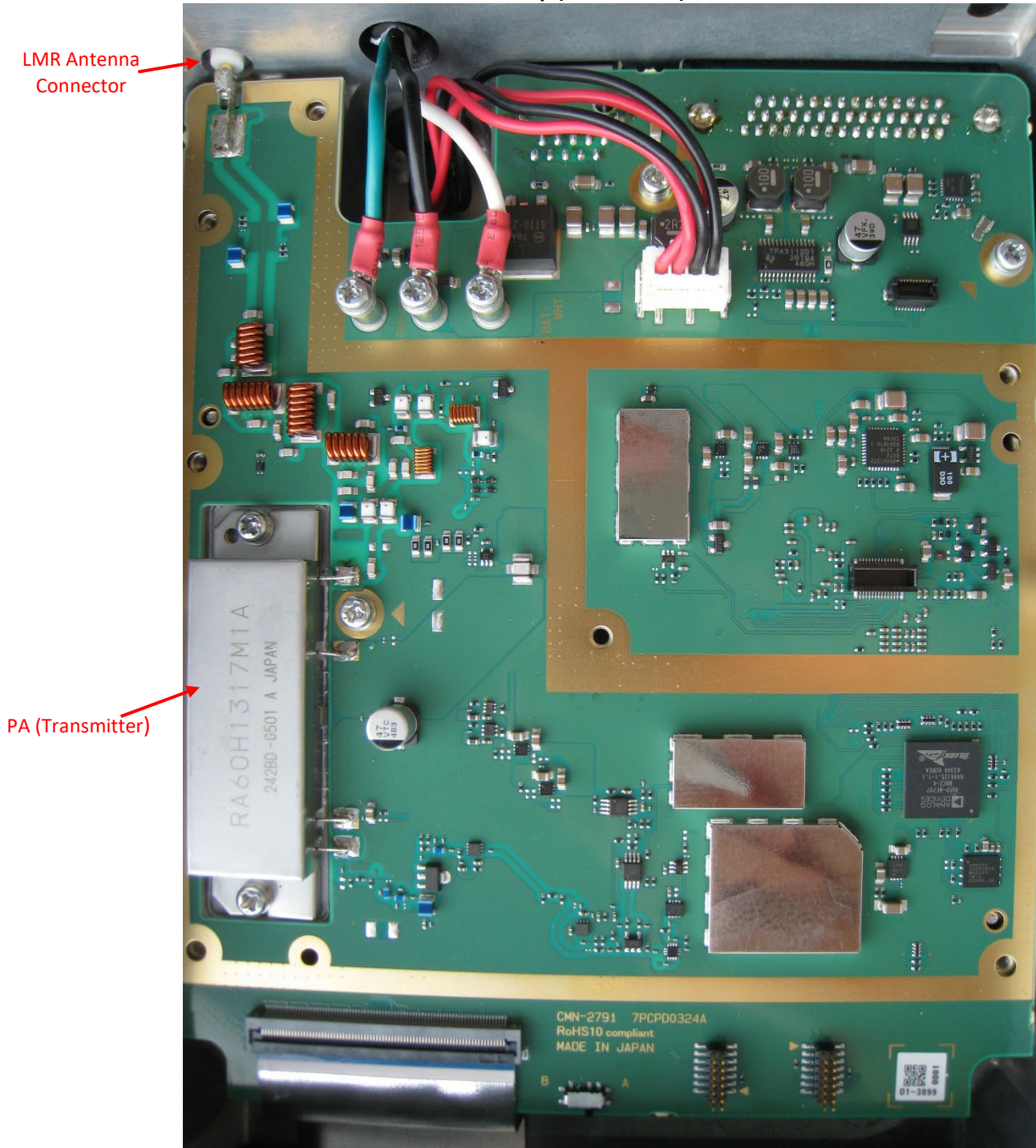
Photo 3: GPS Board – Solder Side





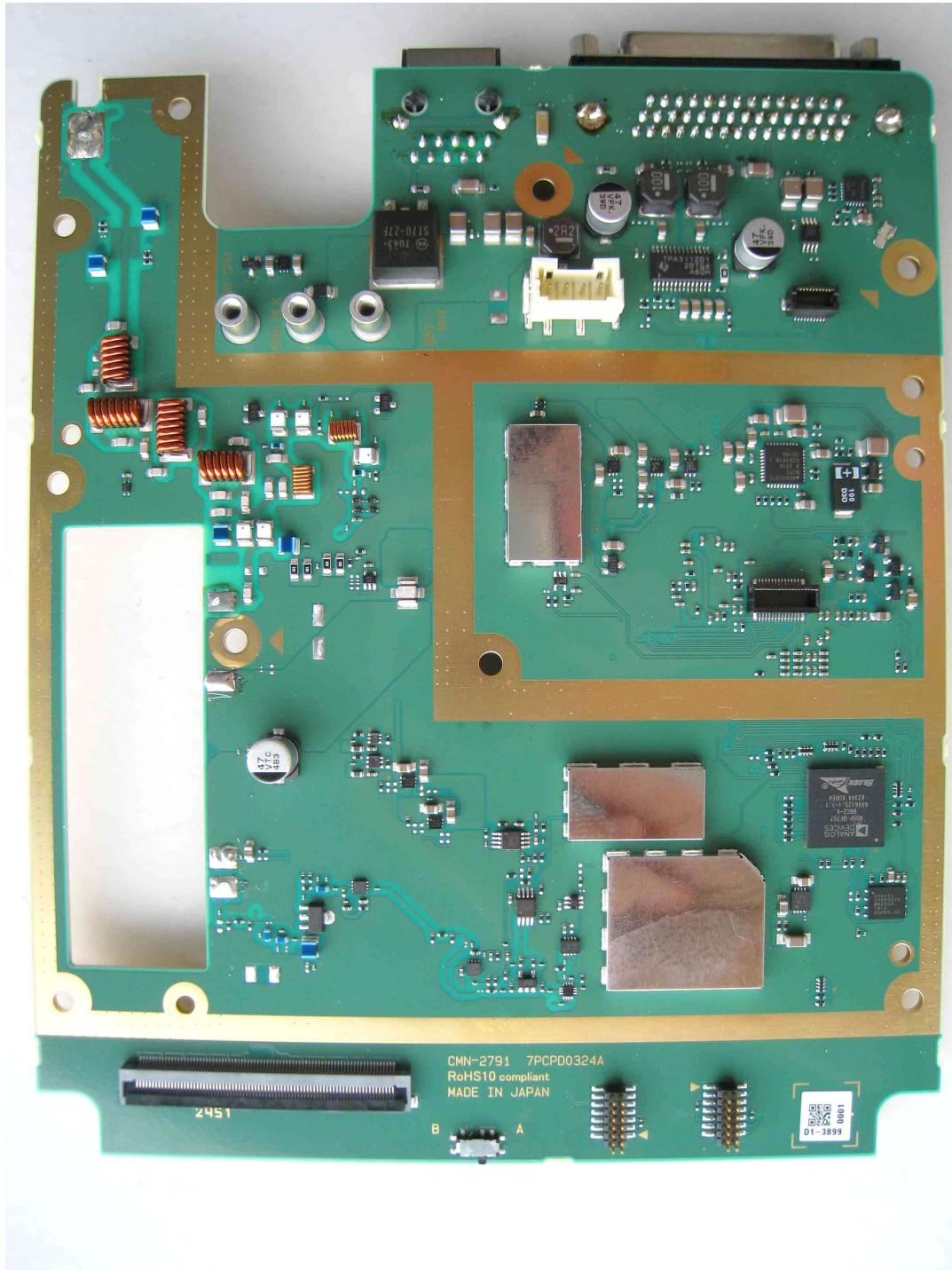
## XL-85M Internal Photos

Photo 4: RF Board in Chassis with Power Amp (Transmitter) and LMR Antenna Connector



## XL-85M Internal Photos

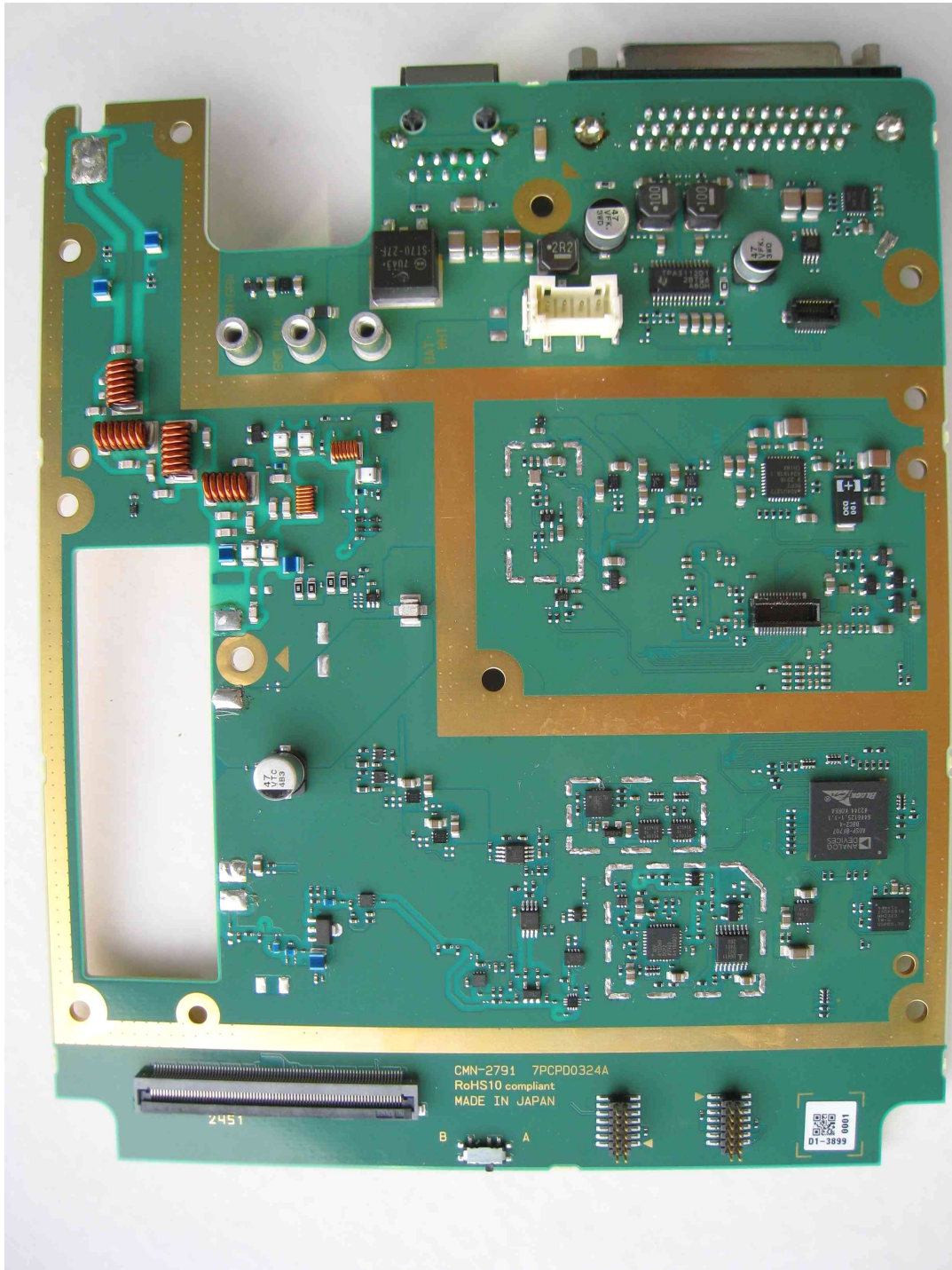
Photo 5: XL-85M RF Board – Component Side, Shielded





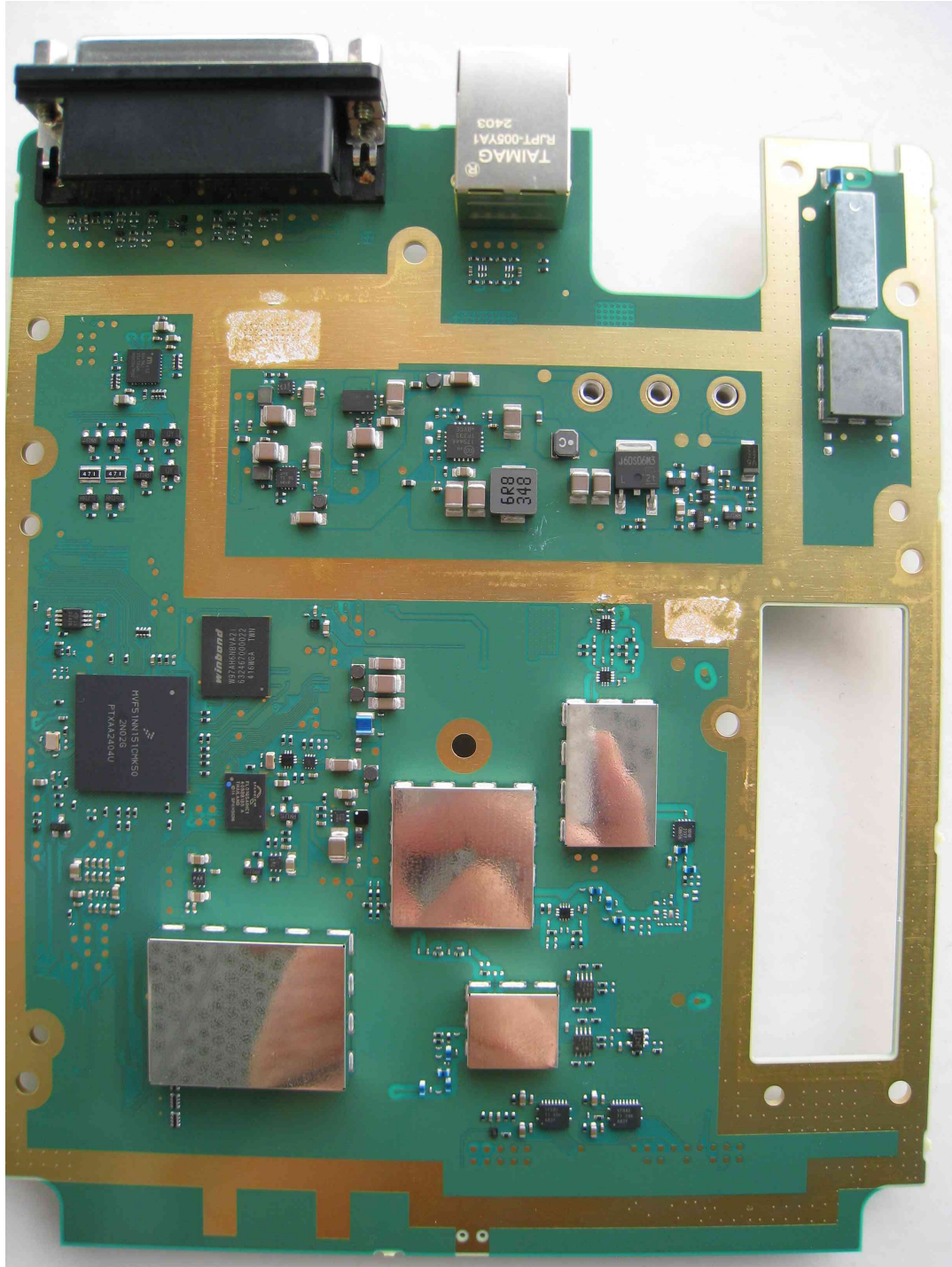
## XL-85M Internal Photos

Photo 6: XL-85M RF Board – Component Side, Unshielded



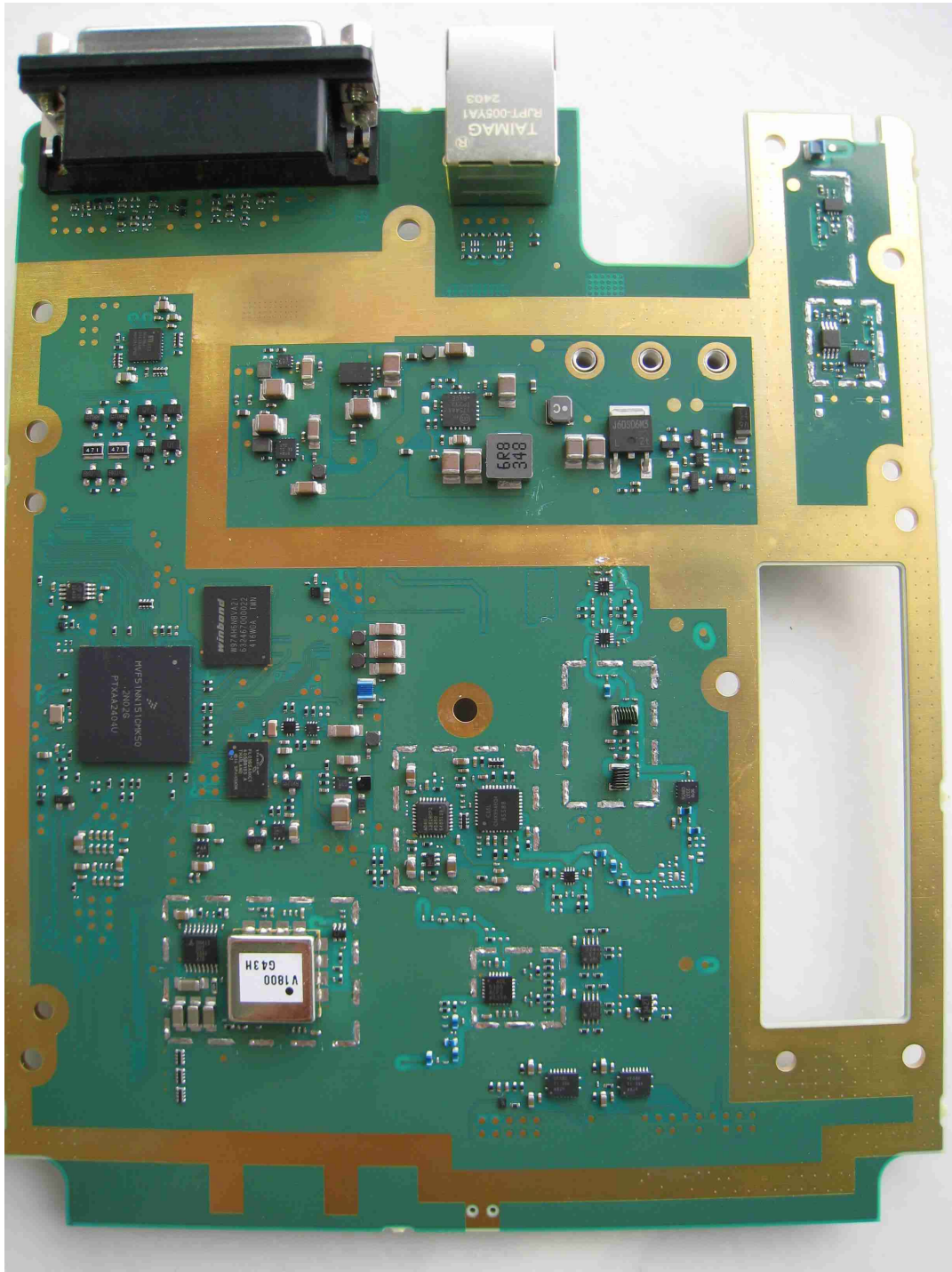
## XL-85M Internal Photos

Photo 7: XL-85M RF Board – Solder Side, Shielded



## XL-85M Internal Photos

Photo 8: XL-85M RF Board – Solder Side, Unshielded





## XL-85M Internal Photos

Photo 9: XL-CH2 Control Head (left) partially separated from XL-85M





## XL-85M Internal Photos

### Photo 10: XL-CH2 separated from XL-85M

Red arrow indicates visible portion of BT/WiFi antenna when Keypad/LCD board inside Keypad front cover



## XL-85M Internal Photos

**Photo 11: BT/WiFi Antenna, front and back views.** Gold area indicates contact point with the spring-loaded pin on Keypad/LCD Solder Side connecting BT/WiFi antenna to PWB BT/WiFi trace (see Photo 13)



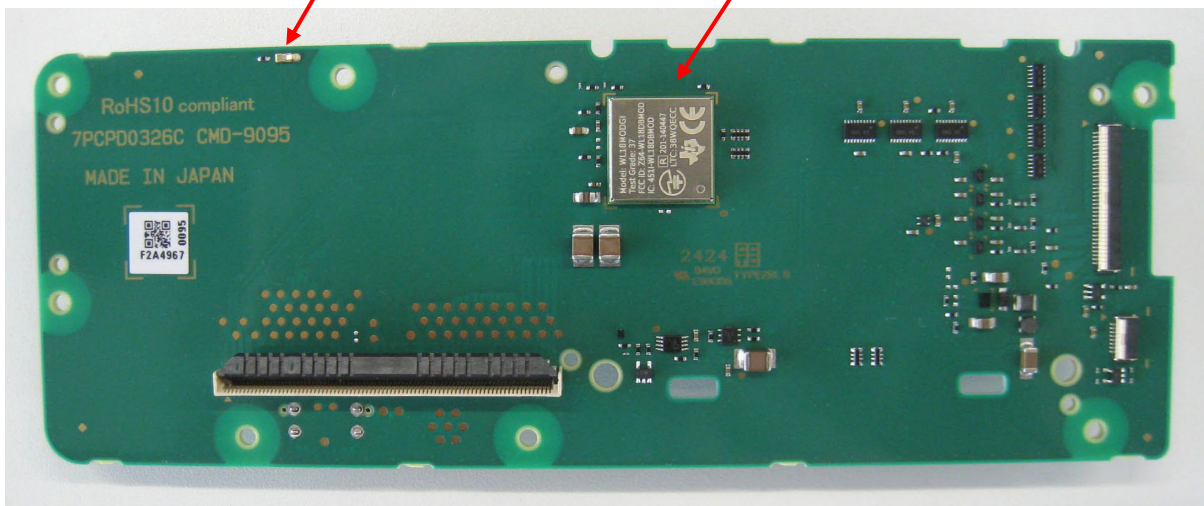
**Photo 12: BT/WiFi antenna clipped onto plastic cover piece on back side of Keypad/LCD board**



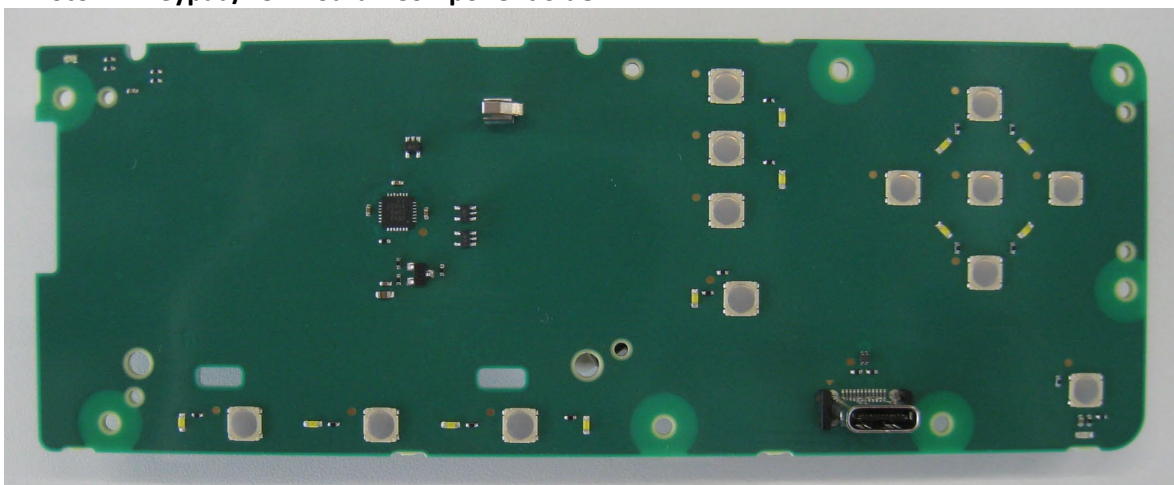
**Photo 13: Keypad/LCD Board – Solder Side - BT/WiFi Module, Spring Contact for BT/WiFi Antenna**

Spring contact for BT/WiFi Antenna  
(Antenna is inside Front Cover)

BT/WiFi Module



**Photo 14: Keypad/LCD Board - Component Side**



## XL-85M Internal Photos

Photo 15: Keypad/LCD Board with LCD

