

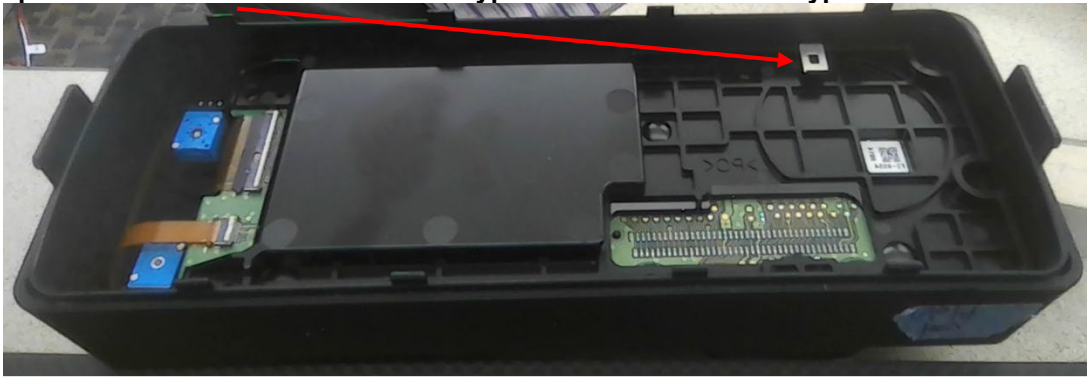
XL-CH2 Opened – Main Board on left; Keypad/LCD Board on right



XL-CH2 Opened – Internal View; Keypad/LCD Board on left under plastic cover with attached BT/WiFi antenna; Main Board Solder Side visible on right



Visible portion of BT/WiFi antenna when Keypad/LCD board inside Keypad front cover



BT/WiFi Antenna, front and back views. Gold area indicates contact point with the spring-loaded pin on Keypad/LCD Solder Side connecting BT/WiFi antenna to PWB BT/WiFi trace



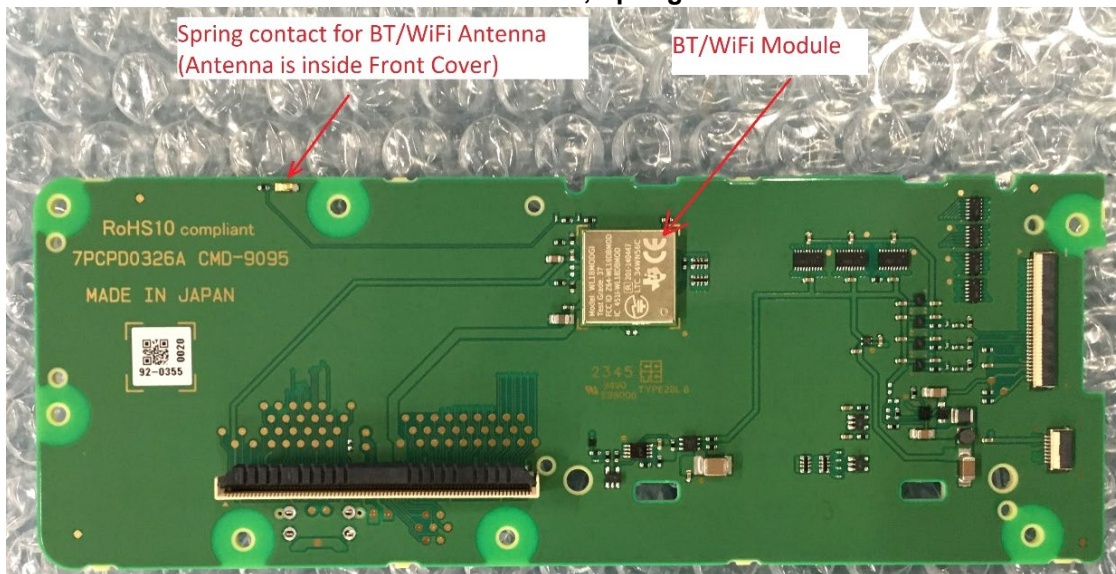
BT/WiFi antenna clipped onto plastic cover on back side of Keypad/LCD board



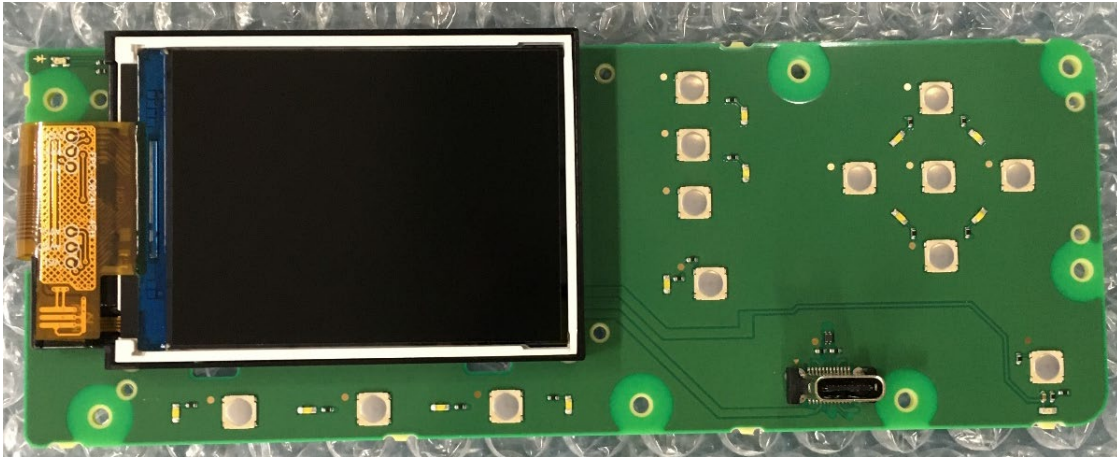
Plastic cover removed to expose Keypad/LCD Board; Main Board Solder Side visible on right



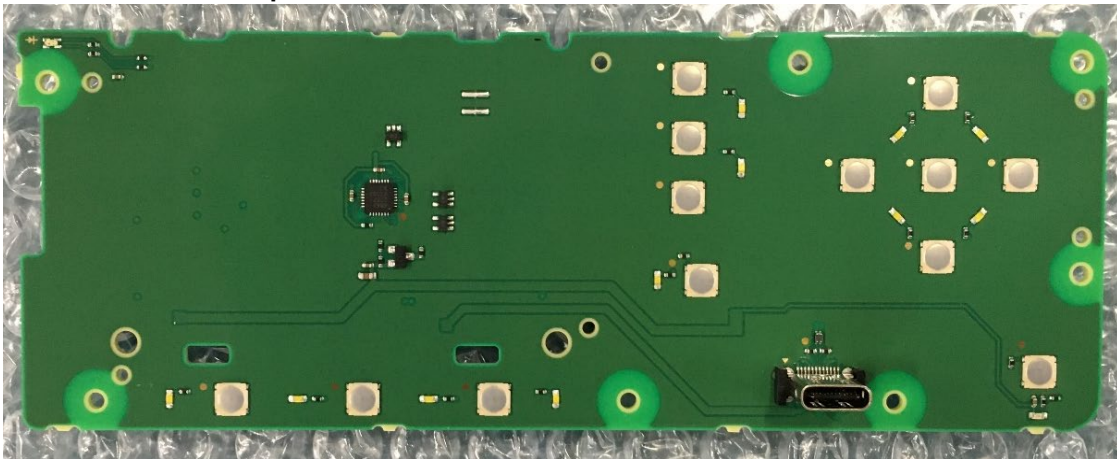
Keypad/LCD Board – Solder Side - BT/WiFi Module, Spring Contact for BT/WiFi Antenna



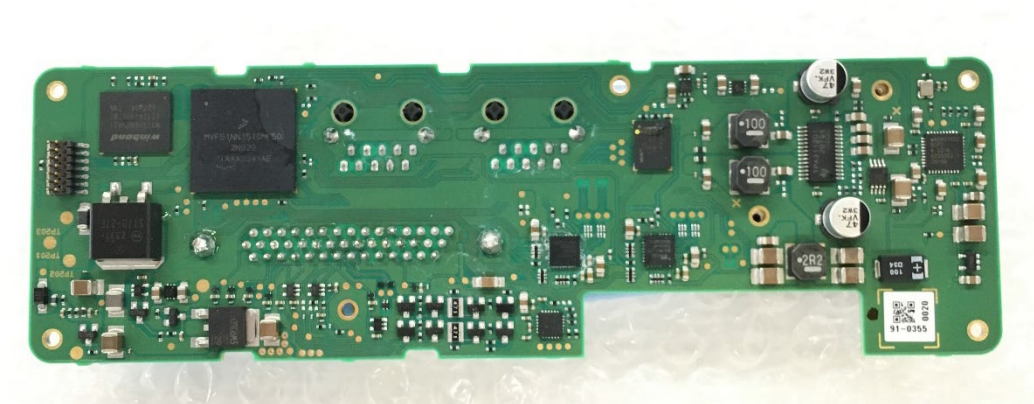
Keypad/LCD Board – Component Side with LCD



Keypad/LCD Board – Component Side without LCD



Main Board – Solder Side



Main Board – Component Side



Main Board – Component Side without Heatsink



Main Board – Component Side – No Shields

