



OET 65

TEST REPORT

Product Name	Digital Portable Radio
Model	PD782G U(2)
FCC ID	YAMPD78XGU2
Client	Hytera Communications Co.,Ltd.

TA Technology (Shanghai) Co., Ltd.

TA Technology (Shanghai) Co., Ltd.

Test Report

Report No. RZA1203-0318SAR01R1

Page 2 of 110

GENERAL SUMMARY

Product Name	Digital Portable Radio	Model	PD782G U(2)
FCC ID	YAMPD78XGU2	Report No.	RZA1103-0318SAR01R1
Client	Hytera Communications Co.,Ltd.		
Manufacturer	Hytera Communications Co.,Ltd.		
Reference Standard(s)	<p>IEEE Std C95.1, 1999: IEEE Standard for Safety Levels with Respect to Human Exposure to Radio Frequency Electromagnetic Fields, 3 KHz to 300 GHz.</p> <p>IEEE Std 1528™-2003: IEEE Recommended Practice for Determining the Peak Spatial-Average Specific Absorption Rate (SAR) in the Human Head from Wireless Communications Devices: Measurement Techniques.</p> <p>SUPPLEMENT C Edition 01-01 to OET BULLETIN 65 Edition 97-01 June 2001 including DA 02-1438 June 19, 2002: Evaluating Compliance with FCC Guidelines for Human Exposure to Radiofrequency Electromagnetic Fields Additional Information for Evaluation Compliance of Mobile and Portable Devices with FCC Limits for Human Exposure to Radiofrequency Emissions.</p> <p>KDB 643646 D01 SAR Test for PTT Radios v01: SAR Test Reduction Considerations for Occupational PTT Radios</p> <p>KDB 447498 D01 Mobile Portable RF Exposure v04: Mobile and Portable Device RF Exposure Procedures and Equipment Authorization Policies</p>		
Conclusion	<p>This portable wireless equipment has been measured in all cases requested by the relevant standards. Test results in Chapter 7 of this test report are below limits specified in the relevant standards.</p> <p>General Judgment: Pass</p> <p style="text-align: right;">(Stamp) Date of issue: June 1st, 2012</p>		
Comment	The test result only responds to the measured sample.		

Approved by 杨伟中
Director

Revised by 凌敏宝
SAR Manager

Performed by 秦明
SAR Engineer

TABLE OF CONTENT

1. General Information	6
1.1. Notes of the Test Report.....	6
1.2. Testing Laboratory	6
1.3. Applicant Information	7
1.4. Manufacturer Information.....	7
1.5. Information of EUT	8
1.6. The Maximum SAR _{1g} Values	10
1.7. Test Date	10
2. SAR Measurements System Configuration	11
2.1. SAR Measurement Set-up	11
2.2. DASY5 E-field Probe System	12
2.2.1. EX3DV4 Probe Specification	12
2.2.2. E-field Probe Calibration	13
2.3. Other Test Equipment	13
2.3.1. Device Holder for Transmitters	13
2.3.2. Phantom	14
2.4. Scanning Procedure	14
2.5. Data Storage and Evaluation	16
2.5.1. Data Storage.....	16
2.5.2. Data Evaluation by SEMCAD	16
3. Laboratory Environment.....	18
4. Tissue-equivalent Liquid	19
4.1. Tissue-equivalent Liquid Ingredients.....	19
4.2. Tissue-equivalent Liquid Properties	20
5. System Check.....	21
5.1. Description of System Check.....	21
5.2. System Check Results.....	23
6. Operational Conditions during Test	24
6.1. General Description of Test Procedures	24
6.2. Test Configuration	24
6.2.1. Face-Held Configuration	24
6.2.2. Body-Worn Configuration	24
7. Test Results	25
7.1. Conducted Power Results	25
7.2. SAR Test Results	26
8. Measurement Uncertainty	30
9. 300MHz to 3GHz Main Test Instruments.....	32
ANNEX A: Test Layout	33
ANNEX B: System Check Results	34

TA Technology (Shanghai) Co., Ltd.
Test Report

Report No. RZA1203-0318SAR01R1

Page 4 of 110

ANNEX C: Graph Results	38
ANNEX D: Probe Calibration Certificate	63
ANNEX E: D450V3 Dipole Calibration Certificate	74
ANNEX F: DAE4 Calibration Certificate	83
ANNEX G: The EUT Appearances and Test Configuration	88

TA Technology (Shanghai) Co., Ltd.
Test Report

Report No. RZA1203-0318SAR01R1

Page 5 of 110

Modified History

REV	DESCRIPTION	ISSUED DATE	REMARK
Rev. 1.0	Initial Test Report Release	2012-03-31	Lingminbao
Rev 1.1	<p>1. Delete the SAR measurement of 519.5MHz, and add SAR measurement of 511.5 MHz.</p> <p>2. Add SAR measurement of adjacent channels with additional battery</p>	2012-6-1	Lingminbao

1. General Information

1.1. Notes of the Test Report

TA Technology (Shanghai) Co., Ltd. guarantees the reliability of the data presented in this test report, which is the results of measurements and tests performed for the items under test on the date and under the conditions stated in this test report and is based on the knowledge and technical facilities available at TA Technology (Shanghai) Co., Ltd. at the time of execution of the test.

TA Technology (Shanghai) Co., Ltd. is liable to the client for the maintenance by its personnel of the confidentiality of all information related to the items under test and the results of the test. This report only refers to the item that has undergone the test.

This report standalone dose not constitute or imply by its own an approval of the product by the certification Bodies or competent Authorities. This report cannot be used partially or in full for publicity and/or promotional purposes without previous written approval of **TA Technology (Shanghai) Co., Ltd.** and the Accreditation Bodies, if it applies.

If the electrical report is inconsistent with the printed one, it should be subject to the latter.

1.2. Testing Laboratory

Company: TA Technology (Shanghai) Co., Ltd.
Address: No.145, Jintang Rd, Tangzhen Industry Park, Pudong Shanghai, China
City: Shanghai
Post code: 201201
Country: P. R. China
Contact: Yang Weizhong
Telephone: +86-021-50791141/2/3
Fax: +86-021-50791141/2/3-8000
Website: <http://www.ta-shanghai.com>
E-mail: yangweizhong@ta-shanghai.com

TA Technology (Shanghai) Co., Ltd.

Test Report

Report No. RZA1203-0318SAR01R1

Page 7 of 110

1.3. Applicant Information

Company: Hytera Communications Co.,Ltd.

Address: Hytera Tower,Hi-Tech Industrial Park North, Nanshan District,Shenzhen China

City: Shenzhen

Postal Code: 518057

Country: P. R. China

1.4. Manufacturer Information

Company: Hytera Communications Co.,Ltd.

Address: Hytera Tower,Hi-Tech Industrial Park North, Nanshan District,Shenzhen China

City: Shenzhen

Postal Code: 518057

Country: P. R. China

TA Technology (Shanghai) Co., Ltd.
Test Report

Report No. RZA1203-0318SAR01R1

Page 8 of 110

1.5. Information of EUT

General Information

Device Type:	Portable Device
Exposure Category:	Controlled Environment /Occupational
State of Sample:	Prototype Unit
Product Name:	Digital Portable Radio
S/N:	/
Hardware Version:	41PD7001000K0
Software Version:	A4.00.10.001
Antenna Type:	External Antenna
Device Operating Configurations:	
Test Modulation:	FM (Analog), 4FSK(Digital)
Operating Frequency Range(s):	450.5MHz – 511.5MHz (UHF)
Test Frequency:	450.5MHz – 468.0MHz – 485.5MHz – 503.0MHz– 511.5MHz
Note: 1. The test channels were selected in accordance with the procedures specified in FCC KDB 447498 D01 Mobile Portable RF Exposure v04 Section 6) c).	

TA Technology (Shanghai) Co., Ltd.

Test Report

Report No. RZA1203-0318SAR01R1

Page 9 of 110

Auxiliary Equipment Details

Accessory Name for Test Report	Model	Description	Manufacturer
Battery			Hytera Communications Co.,Ltd.
Thicker Battery	BL2503	Battery,Li-Ion 2500 mAh,DMR	
Thinner Battery	BL2006	Battery,Li-Ion 2000 mAh,DMR	
Body-worn			
Belt	BC19	Belt Clip,DMR	
Pocket	LCY003	Case, leather w/Swivel,DMR	
Chest Pack1	LCBN13	Belt Clip	
Audio			
Earphone 1	ESS07	Earbud,Receive Only,DMR	
Earphone 2	ESS08	Earpiece,Receive Only,DMR	
Accessory 1	SM18N2	Speaker Mic, Water-Proof Remote,DMR	
Audio Accessory 2	EHN12	D-Earset, w/ In-Line Mic and PTT,DMR	
Audio Accessory 3	EAN16	Earpiece, w/ On-Mic PTT,DMR	
Audio Accessory 4	EAN18	Earpiece, 3-wire Surveillance Kit,DMR	
Audio Accessory 5	ESN10	Earbud, w/ On-Mic PTT,DMR	
Note 1. The Chest Pack provide an extra protection to the operator under RF exposure due to special measures taken during design and manufacturing process. Chest Pack is designed allow the radio only stick to it with belt-clip, the belt-clip will provide necessary distance between antenna and operator’s body. The operator should follow Chest Pack usage instruction to ensure compliance with RF energy exposure limits. According to OET 65C, when multiple accessories that don’t contain metallic components are supplied with the device, the device may be tested with only the accessory that dictates the closest spacing to the body. Because the spacing of combination Chest Pack and belt-clip is higher than only belt-clip, SAR is not required for combination Chest Pack and belt-clip state.			

Equipment Under Test (EUT) is a Digital Portable Radio. SAR is tested for 450.5MHz – 511.5MHz only. The EUT has one external antenna that is used for Tx/Rx.

The sample undergoing test was selected by the Client.

Components list please refer to documents of the manufacturer.

TA Technology (Shanghai) Co., Ltd.
Test Report

Report No. RZA1203-0318SAR01R1

Page 10 of 110

1.6. The Maximum SAR_{1g} Values

Mode	Frequency (MHz)	Position	SAR _{1g} (W/kg) 50% PTT duty cycle
UHF	485.5	Face-held	3.734
UHF	485.5	Body-Worn	6.676

1.7. Test Date

The test performed from March 20, 2012 to June 1, 2012.

2. SAR Measurements System Configuration

2.1. SAR Measurement Set-up

The DASY5 system for performing compliance tests consists of the following items:

- A standard high precision 6-axis robot (Stäubli RX family) with controller and software. An arm extension for accommodating the data acquisition electronics (DAE).
- A dosimetric probe, i.e. an isotropic E-field probe optimized and calibrated for usage in tissue simulating liquid. The probe is equipped with an optical surface detector system.
- A data acquisition electronic (DAE) which performs the signal amplification, signal multiplexing, AD-conversion, offset measurements, mechanical surface detection, collision detection, etc. The unit is battery powered with standard or rechargeable batteries. The signal is optically transmitted to the EOC.
- A unit to operate the optical surface detector which is connected to the EOC.
- The Electro-Optical Coupler (EOC) performs the conversion from the optical into a digital electric signal of the DAE. The EOC is connected to the DASY5 measurement server.
- The DASY5 measurement server, which performs all real-time data evaluation for field measurements and surface detection, controls robot movements and handles safety operation. A computer operating Windows 2003
- DASY5 software and SEMCAD data evaluation software.
- Remote control with teach panel and additional circuitry for robot safety such as warning lamps, etc.
- The generic twin phantom enabling the testing of left-hand and right-hand usage.
- The device holder for handheld mobile phones.
- Tissue simulating liquid mixed according to the given recipes.
- System validation dipoles allowing to validate the proper functioning of the system.

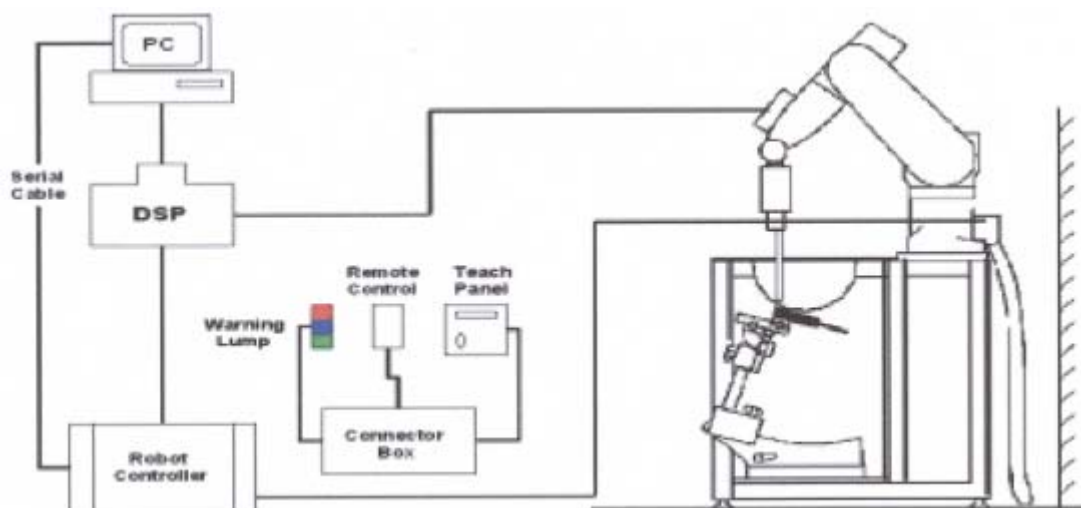


Figure 1. SAR Lab Test Measurement Set-up

2.2. DASY5 E-field Probe System

The SAR measurements were conducted with the dosimetric probe EX3DV4 (manufactured by SPEAG), designed in the classical triangular configuration and optimized for dosimetric evaluation.

2.2.1. EX3DV4 Probe Specification

Construction	Symmetrical design with triangular core Built-in shielding against static charges PEEK enclosure material (resistant to organic solvents, e.g., DGBE)
Calibration	ISO/IEC 17025 calibration service available
Frequency	10MHz to > 6 GHz Linearity: ± 0.2 dB (30MHz to 6 GHz)
Directivity	± 0.3 dB in HSL (rotation around probe axis) ± 0.5 dB in tissue material (rotation normal to probe axis)
Dynamic Range	10 μ W/g to > 100 mW/g Linearity: ± 0.2 dB (noise: typically < 1 μ W/g)
Dimensions	Overall length: 330 mm (Tip: 20 mm) Tip diameter: 2.5 mm (Body: 12 mm) Typical distance from probe tip to dipole centers: 1 mm
Application	High precision dosimetric measurements in any exposure scenario (e.g., very strong gradient fields). Only probe which enables compliance testing for frequencies up to 6 GHz with precision of better 30%.



Figure 2. EX3DV4 E-field Probe



Figure 3. EX3DV4 E-field probe

2.2.2. E-field Probe Calibration

Each probe is calibrated according to a dosimetric assessment procedure with accuracy better than $\pm 10\%$. The spherical isotropy was evaluated and found to be better than $\pm 0.25\text{dB}$. The sensitivity parameters (NormX, NormY, NormZ), the diode compression parameter (DCP) and the conversion factor (ConvF) of the probe are tested.

The free space E-field from amplified probe outputs is determined in a test chamber. This is performed in a TEM cell for frequencies below 1 GHz, and in a wave guide above 1 GHz for free space. For the free space calibration, the probe is placed in the volumetric center of the cavity and at the proper orientation with the field. The probe is then rotated 360 degrees.

E-field temperature correlation calibration is performed in a flat phantom filled with the appropriate simulated brain tissue. The measured free space E-field in the medium correlates to temperature rise in a dielectric medium. For temperature correlation calibration a RF transparent thermistor-based temperature probe is used in conjunction with the E-field probe.

$$\text{SAR} = C \frac{\Delta T}{\Delta t}$$

Where: Δt = Exposure time (30 seconds),

C = Heat capacity of tissue (brain or muscle),

ΔT = Temperature increase due to RF exposure.

Or

$$\text{SAR} = \frac{|E|^2 \sigma}{\rho}$$

Where:

σ = Simulated tissue conductivity,

ρ = Tissue density (kg/m^3).

2.3. Other Test Equipment

2.3.1. Device Holder for Transmitters

The DASY device holder is designed to cope with the different positions given in the standard.

It has two scales for device rotation (with respect to the body axis) and device inclination (with respect to the line between the ear reference points). The rotation centers for both scales is the ear reference point (ERP). Thus the device needs no repositioning when changing the angles.

The DASY device holder is constructed of low-loss POM material. The amount of dielectric material

has been reduced in the closest vicinity of the device, since measurements have suggested that the inference of the clamp on the test results could thus be lowered.



Figure 4. Device Holder

2.3.2. Phantom

Phantom for compliance testing of handheld and body-mounted wireless devices in the frequency range of 30 MHz to 6 GHz. ELI is fully compatible with the IEC 62209-2 standard and all known tissue-simulating liquids. ELI has been optimized regarding its performance and can be integrated into our standard phantom tables. A cover prevents evaporation of the liquid. Reference markings on the phantom allow installation of the complete setup, including all predefined phantom positions and measurement grids, by teaching three points. The phantom is compatible with all SPEAG dosimetric probes and dipoles.

Shell Thickness	2±0.2 mm
Filling Volume	Approx. 30 liters
Dimensions	190×600×0 mm (H x L x W)

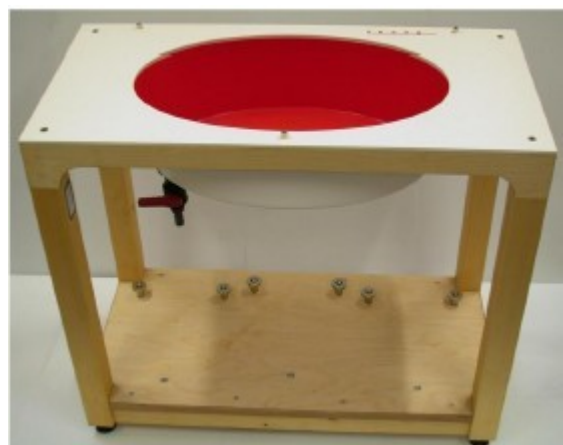


Figure 5. ELI4 Phantom

2.4. Scanning Procedure

The DASY5 installation includes predefined files with recommended procedures for measurements and validation. They are read-only document files and destined as fully defined but unmeasured masks. All test positions (head or body-worn) are tested with the same configuration of test steps differing only in the grid definition for the different test positions.

- The “reference” and “drift” measurements are located at the beginning and end of the batch process. They measure the field drift at one single point in the liquid over the complete procedure. The indicated drift is mainly the variation of the EUT’s output power and should vary max. $\pm 5\%$.
- The “surface check” measurement tests the optical surface detection system of the DASY5 system by repeatedly detecting the surface with the optical and mechanical surface detector and comparing the results. The output gives the detecting heights of both systems, the difference between the two systems and the standard deviation of the detection repeatability. Air bubbles or refraction in the liquid due to separation of the sugar-water mixture gives poor repeatability (above $\pm 0.1\text{ mm}$). To prevent wrong results tests are only executed when the liquid is free of air bubbles. The difference between the optical surface detection and the actual surface depends on the probe and is specified with each probe. (It does not depend on the surface reflectivity or the probe angle to the surface within $\pm 30^\circ$.)

- **Area Scan**

The Area Scan is used as a fast scan in two dimensions to find the area of high field values before running a detailed measurement around the hot spot. Before starting the area scan a grid spacing of 15 mm x 15 mm is set. During the scan the distance of the probe to the phantom remains unchanged.

After finishing area scan, the field maxima within a range of 2 dB will be ascertained.

- **Zoom Scan**

Zoom Scans are used to estimate the peak spatial SAR values within a cubic averaging volume containing 1 g and 10 g of simulated tissue. The default Zoom Scan is done by 7x7x7 points within a cube whose base is centered around the maxima found in the preceding area scan.

- **Spatial Peak Detection**

The procedure for spatial peak SAR evaluation has been implemented and can determine values of masses of 1g and 10g, as well as for user-specific masses. The DASY5 system allows evaluations that combine measured data and robot positions, such as:

- maximum search
- extrapolation
- boundary correction
- peak search for averaged SAR

During a maximum search, global and local maxima searches are automatically performed in 2-D after each Area Scan measurement with at least 6 measurement points. It is based on the evaluation of the local SAR gradient calculated by the Quadratic Shepard's method. The algorithm will find the global maximum and all local maxima within -2 dB of the global maxima for all SAR distributions.

Extrapolation routines are used to obtain SAR values between the lowest measurement points and the inner phantom surface. The extrapolation distance is determined by the surface detection distance and the probe sensor offset. Several measurements at different distances are necessary for the extrapolation. Extrapolation routines require at least 10 measurement points in 3-D space. They are used in the Zoom Scan to obtain SAR values between the lowest measurement points and the inner phantom surface. The routine uses the modified Quadratic Shepard's method for extrapolation. For a grid using 7x7x7 measurement points with 5mm resolution amounting to 343 measurement points, the uncertainty of the extrapolation routines is less than 1% for 1g and 10g cubes.

- A Z-axis scan measures the total SAR value at the x-and y-position of the maximum SAR value found during the cube 7x7x7 scan. The probe is moved away in z-direction from the bottom of the SAM phantom in 5mm steps.

2.5. Data Storage and Evaluation

2.5.1. Data Storage

The DASY5 software stores the acquired data from the data acquisition electronics as raw data (in microvolt readings from the probe sensors), together with all necessary software parameters for the data evaluation (probe calibration data, liquid parameters and device frequency and modulation data) in measurement files with the extension “.DA4”. The software evaluates the desired unit and format for output each time the data is visualized or exported. This allows verification of the complete software setup even after the measurement and allows correction of incorrect parameter settings. For example, if a measurement has been performed with a wrong crest factor parameter in the device setup, the parameter can be corrected afterwards and the data can be re-evaluated.

The measured data can be visualized or exported in different units or formats, depending on the selected probe type ([V/m], [A/m], [°C], [mW/g], [mW/cm²], [dBrel], etc.). Some of these units are not available in certain situations or show meaningless results, e.g., a SAR output in a lossless media will always be zero. Raw data can also be exported to perform the evaluation with other software packages.

2.5.2. Data Evaluation by SEMCAD

The SEMCAD software automatically executes the following procedures to calculate the field units from the microvolt readings at the probe connector. The parameters used in the evaluation are stored in the configuration modules of the software:

Probe parameters:	- Sensitivity	Normi, a_{i0} , a_{i1} , a_{i2}
	- Conversion factor	ConvF _i
	- Diode compression point	Dcp _i
Device parameters:	- Frequency	f
	- Crest factor	cf
Media parameters:	- Conductivity	σ
	- Density	ρ

These parameters must be set correctly in the software. They can be found in the component documents or they can be imported into the software from the configuration files issued for the DASY5 components. In the direct measuring mode of the multimeter option, the parameters of the actual system setup are used. In the scan visualization and export modes, the parameters stored in the corresponding document files are used.

The first step of the evaluation is a linearization of the filtered input signal to account for the compression characteristics of the detector diode. The compensation depends on the input signal, the diode type and the DC-transmission factor from the diode to the evaluation electronics.

TA Technology (Shanghai) Co., Ltd.
Test Report

Report No. RZA1203-0318SAR01R1

Page 17 of 110

If the exciting field is pulsed, the crest factor of the signal must be known to correctly compensate for peak power. The formula for each channel can be given as:

$$V_i = U_i + U_i^2 \cdot c f / d c p_i$$

With V_i = compensated signal of channel i (i = x, y, z)

U_i = input signal of channel i (i = x, y, z)

cf = crest factor of exciting field (DASY parameter)

dcp_i = diode compression point (DASY parameter)

From the compensated input signals the primary field data for each channel can be evaluated:

E-field probes: $E_i = (V_i / Norm_i \cdot ConvF)^{1/2}$

H-field probes: $H_i = (V_i)^{1/2} \cdot (a_{i0} + a_{i1} f + a_{i2} f^2) / f$

With V_i = compensated signal of channel i (i = x, y, z)

$Norm_i$ = sensor sensitivity of channel i (i = x, y, z)
[mV/(V/m)²] for E-field Probes

$ConvF$ = sensitivity enhancement in solution

a_{ij} = sensor sensitivity factors for H-field probes

f = carrier frequency [GHz]

E_i = electric field strength of channel i in V/m

H_i = magnetic field strength of channel i in A/m

The RSS value of the field components gives the total field strength (Hermitian magnitude):

$$E_{tot} = (E_x^2 + E_y^2 + E_z^2)^{1/2}$$

The primary field data are used to calculate the derived field units.

$$SAR = (E_{tot}^2 \cdot \sigma) / (\rho \cdot 1000)$$

with **SAR** = local specific absorption rate in mW/g

E_{tot} = total field strength in V/m

σ = conductivity in [mho/m] or [Siemens/m]

ρ = equivalent tissue density in g/cm³

Note that the density is normally set to 1 (or 1.06), to account for actual brain density rather than the density of the simulation liquid. The power flow density is calculated assuming the excitation field to be a free space field.

$$P_{pwe} = E_{tot}^2 / 3770 \quad \text{or} \quad P_{pwe} = H_{tot}^2 \cdot 37.7$$

with **P_{pwe}** = equivalent power density of a plane wave in mW/cm²

E_{tot} = total electric field strength in V/m

H_{tot} = total magnetic field strength in A/m

3. Laboratory Environment

Table 1: The Requirements of the Ambient Conditions

Temperature	Min. = 20°C, Max. = 25 °C
Relative humidity	Min. = 30%, Max. = 70%
Ground system resistance	< 0.5 Ω
Ambient noise is checked and found very low and in compliance with requirement of standards.	
Reflection of surrounding objects is minimized and in compliance with requirement of standards.	

4. Tissue-equivalent Liquid

4.1. Tissue-equivalent Liquid Ingredients

The liquid is consisted of water, sugar, salt, Preventol and Cellulose. The liquid has previously been proven to be suited for worst-case. The Table 2 and Table 3 show the detail solution. It's satisfying the latest tissue dielectric parameters requirements proposed by the OET 65.

Table 2: Composition of the Head Tissue Equivalent Matter

MIXTURE%	FREQUENCY(Brain) 450MHz
Water	38.56
Sugar	56.32
Salt	3.95
Preventol	0.10
Cellulose	1.07
Dielectric Parameters Target Value	f=450MHz $\epsilon=43.5$ $\sigma=0.87$

Table 3: Composition of the Body Tissue Equivalent Matter

MIXTURE%	FREQUENCY(Body) 450MHz
Water	51.16
Sugar	46.78
Salt	1.49
Preventol	0.10
Cellulose	0.47
Dielectric Parameters Target Value	f=450MHz $\epsilon=56.7$ $\sigma=0.94$

TA Technology (Shanghai) Co., Ltd.

Test Report

Report No. RZA1203-0318SAR01R1

Page 20 of 110

4.2. Tissue-equivalent Liquid Properties

Table 4: Dielectric Performance of Head Tissue Simulating Liquid

Frequency	Description	Dielectric Parameters		Temp ℃
		ϵ_r	$\sigma(\text{s/m})$	
450MHz (head)	Target value $\pm 5\%$ window	43.50 41.33 — 45.68	0.87 0.83 — 0.91	22.0
	Measurement value 2012-3-20	44.11	0.88	21.6
	Measurement value 2012-6-1	44.01	0.89	21.5

Table 5: Dielectric Performance of Body Tissue Simulating Liquid

Frequency	Description	Dielectric Parameters		Temp ℃
		ϵ_r	$\sigma(\text{s/m})$	
450MHz (body)	Target value $\pm 5\%$ window	56.70 53.87 — 59.54	0.94 0.89 — 0.99	22.0
	Measurement value 2012-3-20	57.53	0.93	21.5
	Measurement value 2012-6-1	57.49	0.94	21.5

5. System Check

5.1. Description of System Check

The manufacturer calibrates the probes annually. Dielectric parameters of the tissue simulants were measured every day using the dielectric probe kit and the network analyser. A system check measurement was made following the determination of the dielectric parameters of the simulant, using the dipole validation kit. A power level of 398 mW was supplied to the dipole antenna, which was placed under the flat section of the twin SAM phantom. The system check results (dielectric parameters and SAR values) are given in the table 6 and table 7.

System check results have to be equal or near the values determined during dipole calibration with the relevant liquids and test system ($\pm 10\%$).

System check is performed regularly on all frequency bands where tests are performed with the DASY5 system.

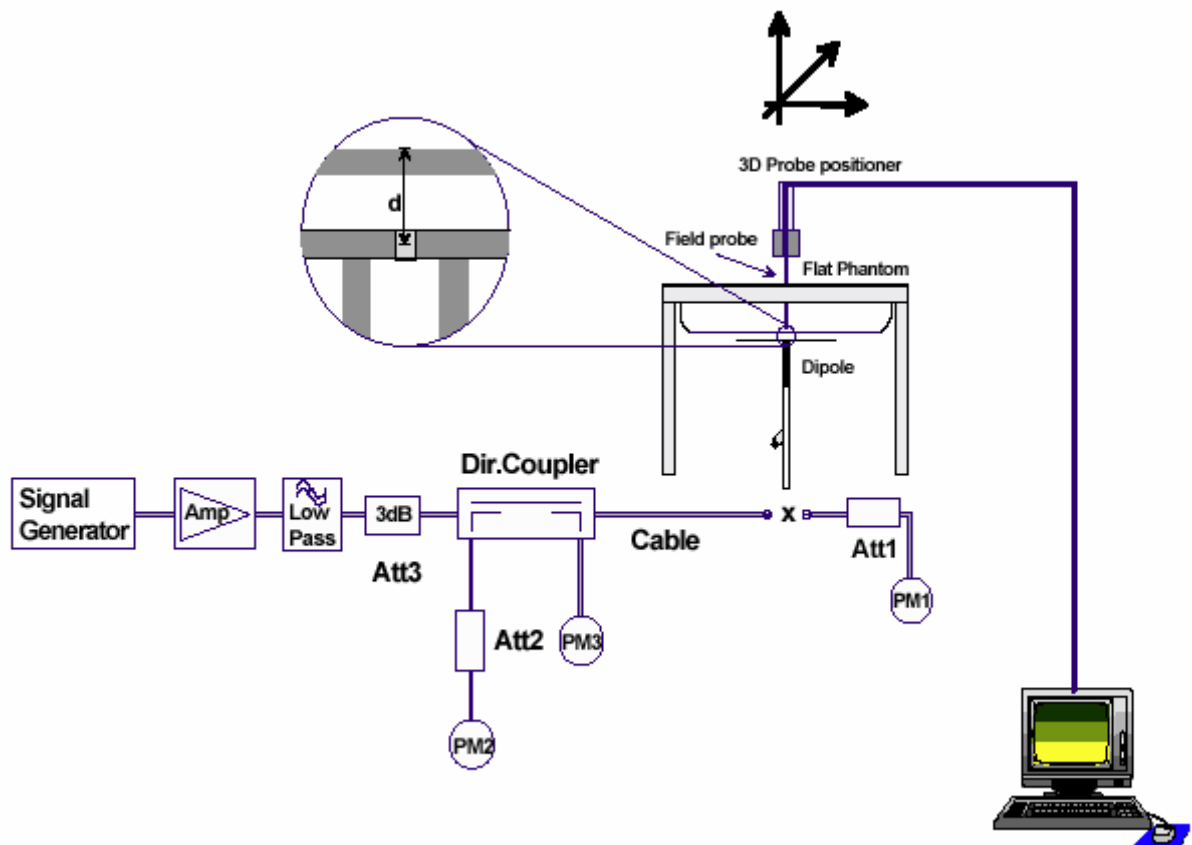


Figure 6. System Check Set-up

TA Technology (Shanghai) Co., Ltd.
Test Report

Report No. RZA1203-0318SAR01R1

Page 22 of 110

Justification for Extended SAR Dipole Calibrations

Usage of SAR dipoles calibrated less than 2 years ago but more than 1 year ago were confirmed in maintaining return loss (< -20 dB, within 20% of prior calibration) and impedance (within 5 ohm from prior calibration) requirements per extended calibrations in KDB Publication 450824:

Dipole D450V3 SN: 1065				
Head Liquid				
Date of Measurement	Return Loss(dB)	Δ %	Impedance (Ω)	$\Delta\Omega$
11/09/2010	-20.5	3.4%	59.2	1.4 Ω
11/08/2011	-21.2		60.6	
Body Liquid				
Date of Measurement	Return Loss(dB)	Δ %	Impedance (Ω)	$\Delta\Omega$
11/09/2010	-20.4	2.9%	56.5	1.6 Ω
11/08/2011	-19.8		58.1	

TA Technology (Shanghai) Co., Ltd.

Test Report

Report No. RZA1203-0318SAR01R1

Page 23 of 110

5.2. System Check Results

Table 6: System Check for Head Tissue Simulating Liquid

Frequency	Test Date	Dielectric Parameters		Temp	398mW Measure SAR _{1g}	1W Normalized SAR _{1g}	1W Target SAR _{1g} (±10% Deviation)
		ϵ_r	σ (s/m)	(°C)	(W/kg)		
450MHz	2012-3-20	44.11	0.88	21.6	2.00	5.03	4.76
	2012-6-1	44.01	0.89	21.5	2.01	5.05	(4.28~5.24)

Note: 1. The graph results see ANNEX B.
2. Target Values used derive from the calibration certificate.

Table 7: System Check for Body Tissue Simulating Liquid

Frequency	Test Date	Dielectric Parameters		Temp	398mW Measure SAR _{1g}	1W Normalized SAR _{1g}	1W Target SAR _{1g} (±10% Deviation)
		ϵ_r	σ (s/m)	(°C)	(W/kg)		
450MHz	2012-3-20	57.53	0.93	21.5	1.78	4.47	4.51
	2012-6-1	57.49	0.94	21.5	1.76	4.42	(4.06~4.96)

Note: 1. The graph results see ANNEX B.
2. Target Values used derive from the calibration certificate.

6. Operational Conditions during Test

6.1. General Description of Test Procedures

The spatial peak SAR values were assessed for UHF (450.5MHz, 468.0MHz, 485.5MHz, 503.0MHz and 511.5MHz) systems. Batterys and accessories shall be specified by the manufacturer. The EUT batterys must be fully charged and checked periodically during the test to ascertain uniform power output.

6.2. Test Configuration

6.2.1. Face-Held Configuration

Face-held Configuration - Default Battery Selection - per FCC KDB 643646, Page 2, Section 1) A):
“When multiple standard batteries are supplied with a radio, the battery with the highest capacity is considered the default battery for making head SAR measurements.”

6.2.2. Body-Worn Configuration

a. Body-worn Configuration - Default Battery Selection - per FCC KDB 643646, Page 5, Section 1) A):
Start by testing a PTT radio with the thinnest battery and a standard (default) Body-worn accessory.

b. Body-worn Configuration - Default Body-worn Accessory Selection - the belt-clip was selected as the default Body-worn accessory based on the smaller separation distance it provides between the radio and the user in comparison to the remaining accessories. Per FCC KDB 643646, Page 5, Section 1) A): “When multiple default Body-worn accessories are supplied with a radio, the standard Body-worn accessory expected to result in the highest SAR based on its construction and exposure conditions is considered the default Body-worn accessory for making Body-worn measurements.”

c. Body-worn Configuration - Additional Body-worn Accessories - the remaining Body-worn accessories were evaluated based on the “additional Body-worn accessory” guidance provided in FCC KDB 643646, Page 7, Section 4). The remaining Body-worn accessories can be utilized with all the audio accessory options.

d. Body-worn Configuration - Selection of Default Audio Accessories by Category - the Default Audio Accessories by Category were selected based on the guidance provided in FCC KDB 643646, Section “Body SAR Test Considerations for Audio Accessories without Built-in Antenna”, Page 10: “For audio accessories with similar construction and operating requirements, test only the audio accessory within the group that is expected to result in the highest SAR, with respect to changes in RF characteristics and exposure conditions for the combination. If it is unclear which audio accessory within a group of similar accessories is expected to result in the highest SAR, good engineering judgment and preliminary testing should be applied to select the accessory that is expected to result in the highest SAR.” The Remaining Audio Accessories by Category were evaluated on the highest SAR channel from the Default Audio Accessory evaluations.

TA Technology (Shanghai) Co., Ltd.
Test Report

Report No. RZA1203-0318SAR01R1

Page 25 of 110

7. Test Results

7.1. Conducted Power Results

Table 8: Conducted Power Measurement Results

Analog UHF (12.5KHz)	Conducted Power				
	450.5MHz	468.0MHz	485.5MHz	503.0MHz	511.5MHz
Test Result (dBm)	36.94	36.95	36.99	36.94	36.97
Digital UHF	Conducted Power				
	450.5MHz	468.0MHz	485.5MHz	503.0MHz	511.5MHz
Test Result (dBm)	36.93	36.93	36.93	36.93	36.94

TA Technology (Shanghai) Co., Ltd.

Test Report

Report No. RZA1203-0318SAR01R1

Page 26 of 110

7.2. SAR Test Results

7.2.1. UHF

Table 9: SAR Values (UHF)

Limits	1 g Average (W/kg)		Power Drift (dB)	Graph Results
	8.0		± 0.21	
Frequency	Duty Cycle		Power Drift (dB)	
	100%	50%		
The EUT display towards phantom for 12.5 KHz with Thicker Battery (Analog, Face Held)				
450.5MHz	5.090	2.545	-0.011	Figure 11
468.0MHz	5.570	2.785	-0.189	Figure 12
485.5MHz	7.360	3.680	-0.063	Figure 13
503.0MHz	6.630	3.315	-0.155	Figure 14
511.5MHz	6.150	3.075	-0.040	Figure 15
Worst case position with Thinner Battery (Analog, Face Held)				
485.5MHz	7.320	3.660	-0.085	Figure 16
The EUT display towards ground for 12.5 KHz with Thinner Battery, Belt and Accessory 1 (Analog, Body-Worn)				
450.5MHz	9.220	4.610	-0.076	Figure 17
468.0MHz	10.600	5.300	-0.096	Figure 18
485.5MHz	12.500	6.250	-0.018	Figure 19
503.0MHz	10.700	5.350	-0.005	Figure 20
511.5MHz	10.600	5.300	-0.082	Figure 21
The EUT display towards ground for 12.5 KHz with Thinner Battery, Belt, Accessory 1 and Earphone 1 (Analog, Body-Worn)				
485.5MHz	12.000	6.000	-0.048	Figure 22
The EUT display towards ground for 12.5 KHz with Thinner Battery, Belt, Accessory 1 and Earphone 2 (Analog, Body-Worn)				
485.5MHz	12.600	6.300	-0.037	Figure 23
The EUT display towards ground for 12.5 KHz with Thinner Battery, Belt and Audio Accessory 2 (Analog, Body-Worn)				
485.5MHz	13.300	6.650	-0.017	Figure 24
The EUT display towards ground for 12.5 KHz with Thinner Battery, Belt and Audio Accessory 3 (Analog, Body-Worn)				
485.5MHz	11.900	5.950	-0.155	Figure 25

TA Technology (Shanghai) Co., Ltd.

Test Report

Report No. RZA1203-0318SAR01R1

Page 27 of 110

The EUT display towards ground for 12.5 KHz with Thinner Battery, Belt and Audio Accessory 4 (Analog, Body-Worn)				
485.5MHz	12.100	6.050	-0.018	Figure 26
The EUT display towards ground for 12.5 KHz with Thinner Battery, Belt and Audio Accessory 5 (Analog, Body-Worn)				
485.5MHz	11.400	5.700	-0.174	Figure 27
The EUT display towards ground for 12.5 KHz with Thinner Battery, Pocket and Accessory 1 (Analog, Body-Worn)				
485.5MHz	12.500	6.250	-0.002	Figure 28
The EUT display towards ground for 12.5 KHz with Thinner Battery, Pocket, Leather and Accessory 1 (Analog, Body-Worn)				
485.5MHz	6.490	3.245	-0.003	Figure 29
Worst case position of Analog for Digital with Thinner Battery, Belt and Audio Accessory 2 (Body-Worn)				
485.5MHz	6.240	3.120	-0.057	Figure 30
Worst case position with Thicker Battery, Belt and Audio Accessory 2 (Analog, Body-Worn)				
468.0MHz	11.700	5.850	-0.040	Figure 31
485.5MHz	13.000	6.500	-0.098	Figure 32
503.0MHz	11.200	5.600	-0.074	Figure 33
<p>Note; 1. For face-held configuration, battery “Thicker” was selected as the default battery (highest mAh).</p> <p>2. When the head SAR of an antenna tested on the highest output power channel with the default battery is $> 3.5 \text{ W/kg}$ and $\leq 4 \text{ W/kg}$, testing of all other required channels is required.</p> <p>3. When the highest SAR for all antennas tested using the default battery is $< 4 \text{ W/kg}$, test additional batteries using the antenna and channel configuration that resulted in the highest SAR for that antenna.</p> <p>4. For body-worn configuration, battery “Thinner” was selected as the default battery.</p> <p>5. When the body SAR of an antenna is $> 6 \text{ W/kg}$, testing of all other required channels is required for that antenna.</p> <p>6. When the highest SAR of an antenna tested with the default battery using the default body-worn and audio accessory is $> 6.0 \text{ W/kg}$, test additional batteries with the default body-worn and audio accessory on the channel that resulted in the highest SAR for that antenna.</p> <p>7. The audio accessory Speaker Mic was selected as the default audio accessory based on preliminary evaluations resulting in the most conservative SAR of all the disclosed audio accessory options.</p> <p>8.If the SAR measured in I) is $> 6.0 \text{ W/kg}$, test that additional battery with the default body-worn and audio accessory on the required immediately adjacent channels.</p>				

TA Technology (Shanghai) Co., Ltd.

Test Report

Report No. RZA1203-0318SAR01R1

Page 28 of 110

Table 10: SAR Values are scaled for the power drift

Limits	1 g Average (W/kg)		Power Drift (dB)	+ Power Drift 10^(dB/10)	SAR 1g (W/kg) (include + power drift)	
	8.0		± 0.21			
Frequency	Duty Cycle		Power Drift(dB)		Duty Cycle	
	100%	50%		100%	50%	
The EUT display towards phantom for 12.5 KHz with Thicker Battery (Analog, Face Held)						
450.5MHz	5.090	2.545	0.011	1.003	5.103	2.551
468.0MHz	5.570	2.785	0.189	1.044	5.818	2.909
485.5MHz	7.360	3.680	0.063	1.015	7.468	3.734
503.0MHz	6.630	3.315	0.155	1.036	6.871	3.435
511.5MHz	6.150	3.075	0.040	1.009	6.207	3.103
Worst case position with Thinner Battery (Analog, Face Held)						
485.5MHz	7.320	3.660	0.085	1.020	7.465	3.732
The EUT display towards ground for 12.5 KHz with Thinner Battery, Belt and Accessory 1 (Analog, Body-Worn)						
450.5MHz	9.220	4.610	0.076	1.018	9.383	4.691
468.0MHz	10.600	5.300	0.096	1.022	10.837	5.418
485.5MHz	12.500	6.250	0.018	1.004	12.552	6.276
503.0MHz	10.700	5.350	0.005	1.001	10.712	5.356
511.5MHz	10.600	5.300	0.082	1.019	10.802	5.401
The EUT display towards ground for 12.5 KHz with Thinner Battery, Belt, Accessory 1 and Earphone 1 (Analog, Body-Worn)						
485.5MHz	12.000	6.000	0.048	1.011	12.133	6.067
The EUT display towards ground for 12.5 KHz with Thinner Battery, Belt, Accessory 1 and Earphone 2 (Analog, Body-Worn)						
485.5MHz	12.600	6.300	0.037	1.009	12.708	6.354
The EUT display towards ground for 12.5 KHz with Thinner Battery, Belt and Audio Accessory 2 (Analog, Body-Worn)						
485.5MHz	13.300	6.650	0.017	1.004	13.352	6.676
The EUT display towards ground for 12.5 KHz with Thinner Battery, Belt and Audio Accessory 3 (Analog, Body-Worn)						
485.5MHz	11.900	5.950	0.155	1.036	12.332	6.166
The EUT display towards ground for 12.5 KHz with Thinner Battery, Belt and Audio Accessory 4 (Analog, Body-Worn)						
485.5MHz	12.100	6.050	0.018	1.004	12.150	6.075

Test Report

Page 29 of 110

The EUT display towards ground for 12.5 KHz with Thinner Battery, Belt and Audio Accessory 5 (Analog, Body-Worn)						
485.5MHz	11.400	5.700	0.174	1.041	11.866	5.933
The EUT display towards ground for 12.5 KHz with Thinner Battery, Pocket and Accessory 1 (Analog, Body-Worn)						
485.5MHz	12.500	6.250	0.002	1.000	12.506	6.253
The EUT display towards ground for 12.5 KHz with Thinner Battery, Pocket, Leather and Accessory 1 (Analog, Body-Worn)						
485.5MHz	6.490	3.245	0.003	1.001	6.494	3.247
Worst case position of Analog for Digital with Thinner Battery, Belt and Audio Accessory 2 (Body-Worn)						
485.5MHz	6.240	3.120	0.057	1.013	6.322	3.161
Worst case position with Thicker Battery, Belt and Audio Accessory 2 (Analog, Body-Worn)						
468.0MHz	11.700	5.850	0.040	1.009	11.808	5.904
485.5MHz	13.000	6.500	0.098	1.023	13.297	6.648
503.0MHz	11.200	5.600	0.074	1.017	11.392	5.696
<p>Note: 1. The value with blue color is the maximum SAR Value of each test band.</p> <p>2. The Exposure category about EUT: controlled environment / Occupational, so the SAR limit is 8.0 W/kg averaged over any 1 gram of tissue.</p> <p>3. The SAR levels reported are based on 50% PTT duty factor including SAR droop.</p>						

TA Technology (Shanghai) Co., Ltd.

Test Report

Report No. RZA1203-0318SAR01R1

Page 30 of 110

8. Measurement Uncertainty

No.	source	Type	Uncertainty Value (%)	Probability Distribution	k	c _i	Standard ncertainty u_i (%)	Degree of freedom V_{eff} or V_i
1	System repetivity	A	0.5	N	1	1	0.5	9
Measurement system								
2	-probe calibration	B	6.7	N	1	1	6.7	∞
3	-axial isotropy of the probe	B	4.7	R	$\sqrt{3}$	$\sqrt{0.5}$	1.9	∞
4	- Hemispherical isotropy of the probe	B	9.4	R	$\sqrt{3}$	$\sqrt{0.5}$	3.9	∞
6	-boundary effect	B	1.9	R	$\sqrt{3}$	1	1.1	∞
7	-probe linearity	B	4.7	R	$\sqrt{3}$	1	2.7	∞
8	- System detection limits	B	1.0	R	$\sqrt{3}$	1	0.6	∞
9	-readout Electronics	B	1.0	N	1	1	1.0	∞
10	-response time	B	0	R	$\sqrt{3}$	1	0	∞
11	-integration time	B	4.32	R	$\sqrt{3}$	1	2.5	∞
12	-noise	B	0	R	$\sqrt{3}$	1	0	∞
13	-RF Ambient Conditions	B	3	R	$\sqrt{3}$	1	1.73	∞
14	-Probe Positioner Mechanical Tolerance	B	0.4	R	$\sqrt{3}$	1	0.2	∞
15	-Probe Positioning with respect to Phantom Shell	B	2.9	R	$\sqrt{3}$	1	1.7	∞
16	-Extrapolation, interpolation and Integration Algorithms for Max. SAR Evaluation	B	3.9	R	$\sqrt{3}$	1	2.3	∞
Test sample Related								
17	-Test Sample Positioning	A	2.9	N	1	1	2.9	71
18	-Device Holder Uncertainty	A	4.1	N	1	1	4.1	5
19	-Output Power Variation - SAR drift measurement	B	5.0	R	$\sqrt{3}$	1	2.9	∞
Physical parameter								
20	-phantom	B	4.0	R	$\sqrt{3}$	1	2.3	∞

TA Technology (Shanghai) Co., Ltd.

Test Report

Report No. RZA1203-0318SAR01R1

Page 31 of 110

21	-liquid conductivity (deviation from target)	B	5.0	R	$\sqrt{3}$	0.64	1.8	∞
22	-liquid conductivity (measurement uncertainty)	B	2.5	N	1	0.64	1.6	9
23	-liquid permittivity (deviation from target)	B	5.0	R	$\sqrt{3}$	0.6	1.7	∞
24	-liquid permittivity (measurement uncertainty)	B	2.5	N	1	0.6	1.5	9
Combined standard uncertainty		$u_c' = \sqrt{\sum_{i=1}^{21} c_i^2 u_i^2}$					12.53	
Expanded uncertainty (confidence interval of 95 %)		$u_e = 2u_c$		N	k=2		23.76	

TA Technology (Shanghai) Co., Ltd.
Test Report

Report No. RZA1203-0318SAR01R1

Page 32 of 110

9. 300MHz to 3GHz Main Test Instruments

Table 11: List of Main Instruments

No.	Name	Type	Serial Number	Calibration Date	Valid Period
01	Network analyzer	Agilent 8753E	US37390326	September 12, 2011	One year
02	Dielectric Probe Kit	Agilent 85070E	US44020115	No Calibration Requested	
03	Power meter	Agilent E4417A	GB41291714	March 11, 2012	One year
04	Power sensor	Agilent N8481H	MY50350004	September 25, 2011	One year
05	Power sensor	E9327A	US40441622	September 24, 2011	One year
06	Signal Generator	HP 8341B	2730A00804	September 12, 2011	One year
07	Amplifier	IXA-020	0401	No Calibration Requested	
08	E-field Probe	EX3DV4	3816	October 3, 2011	One year
09	DAE	DAE4	871	November 22, 2011	One year
10	Validation Kit 450MHz	D450V3	1065	November 9, 2010	Two years
11	Dual directional coupler	778D-012	5051P	August 21, 2011	One year
12	Temperature Probe	JM222	AA1009129	March 15, 2012	One year
13	Hygrothermograph	WS-1	64591	September 28, 2011	One year

*****END OF REPORT *****

ANNEX A: Test Layout



Picture 1: Specific Absorption Rate Test Layout



Picture 2: Liquid depth in the Flat Phantom (450MHz, 15.4cm depth)

ANNEX B: System Check Results

System Performance Check at 450 MHz Head TSL

DUT: Dipole450 MHz; Type: D450V3; Serial: 1065

Date/Time: 3/20/2012 12:06:21 PM

Communication System: CW; Frequency: 450 MHz; Duty Cycle: 1:1

Medium parameters used: $f = 450$ MHz; $\sigma = 0.88$ mho/m; $\epsilon_r = 44.11$; $\rho = 1000$ kg/m³

Ambient Temperature: 22.3 °C Liquid Temperature: 21.6 °C

DASY5 Configuration:

Probe: EX3DV4 - SN3816; ConvF(9.97, 9.97, 9.97) Calibrated: 10/3/2011

Electronics: DAE4 Sn871; Calibrated: 11/22/2011

Phantom: ELI 4.0; Type: QDOVA001BA

Measurement SW: DASY5, V5.2 Build 162; SEMCAD X Version 14.0 Build 59

d=15mm, Pin=398mW/Area Scan (41x131x1): Measurement grid: dx=15mm, dy=15mm

Maximum value of SAR (interpolated) = 2.15 mW/g

d=15mm, Pin=398mW/Zoom Scan (7x7x7)/Cube 0: Measurement grid: dx=5mm, dy=5mm, dz=5mm

Reference Value = 52.2 V/m; Power Drift = -0.033 dB

Peak SAR (extrapolated) = 3.29 W/kg

SAR(1 g) = 2.00 mW/g; SAR(10 g) = 1.31 mW/g

Maximum value of SAR (measured) = 2.15 mW/g

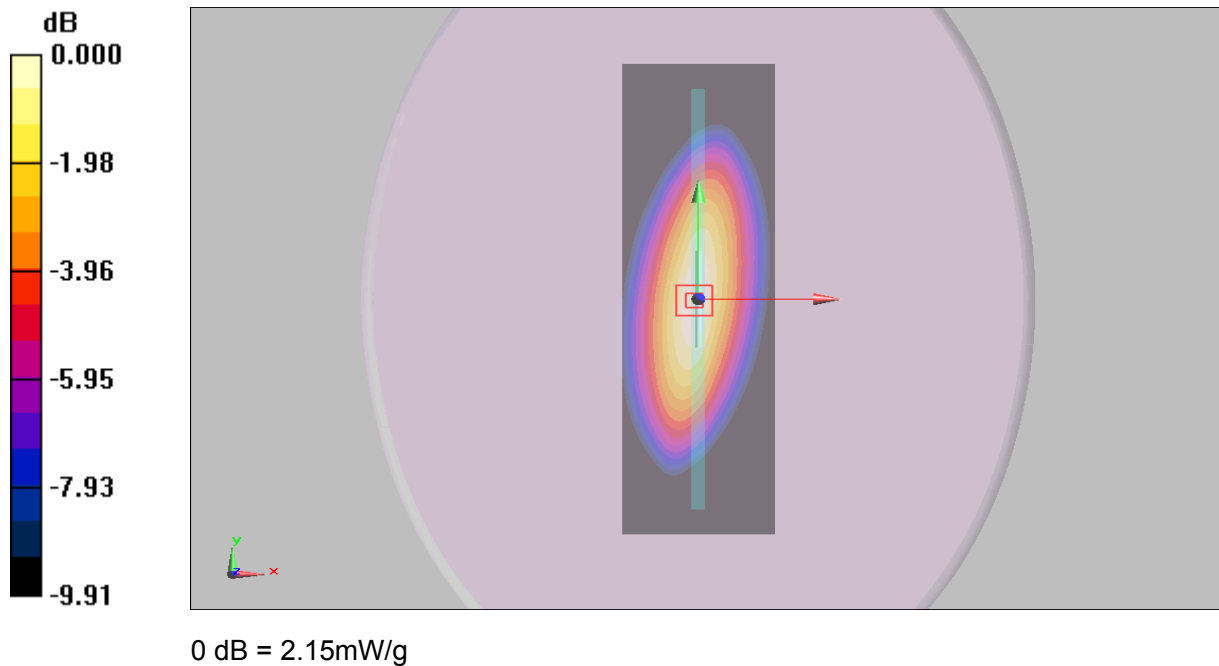


Figure 7 System Performance Check 450MHz 398mW

System Performance Check at 450 MHz Head TSL

DUT: Dipole450 MHz; Type: D450V3; Serial: 1065

Date/Time: 6/1/2012 12:11:21 PM

Communication System: CW; Frequency: 450 MHz; Duty Cycle: 1:1

Medium parameters used: $f = 450 \text{ MHz}$; $\sigma = 0.89 \text{ mho/m}$; $\epsilon_r = 44.01$; $\rho = 1000 \text{ kg/m}^3$

Ambient Temperature: 22.3°C Liquid Temperature: 21.6°C

DASY5 Configuration:

Probe: EX3DV4 - SN3816; ConvF(9.97, 9.97, 9.97) Calibrated: 10/3/2011

Electronics: DAE4 Sn871; Calibrated: 11/22/2011

Phantom: ELI 4.0; Type: QDOVA001BA

Measurement SW: DASY5, V5.2 Build 162; SEMCAD X Version 14.0 Build 59

d=15mm, Pin=398mW/Area Scan (41x131x1): Measurement grid: $dx=15\text{mm}$, $dy=15\text{mm}$

Maximum value of SAR (interpolated) = 2.15 mW/g

d=15mm, Pin=398mW/Zoom Scan (7x7x7)/Cube 0: Measurement grid: $dx=5\text{mm}$, $dy=5\text{mm}$, $dz=5\text{mm}$

Reference Value = 52.2 V/m ; Power Drift = -0.027 dB

Peak SAR (extrapolated) = 3.29 W/kg

SAR(1 g) = 2.01 mW/g ; SAR(10 g) = 1.33 mW/g

Maximum value of SAR (measured) = 2.17 mW/g

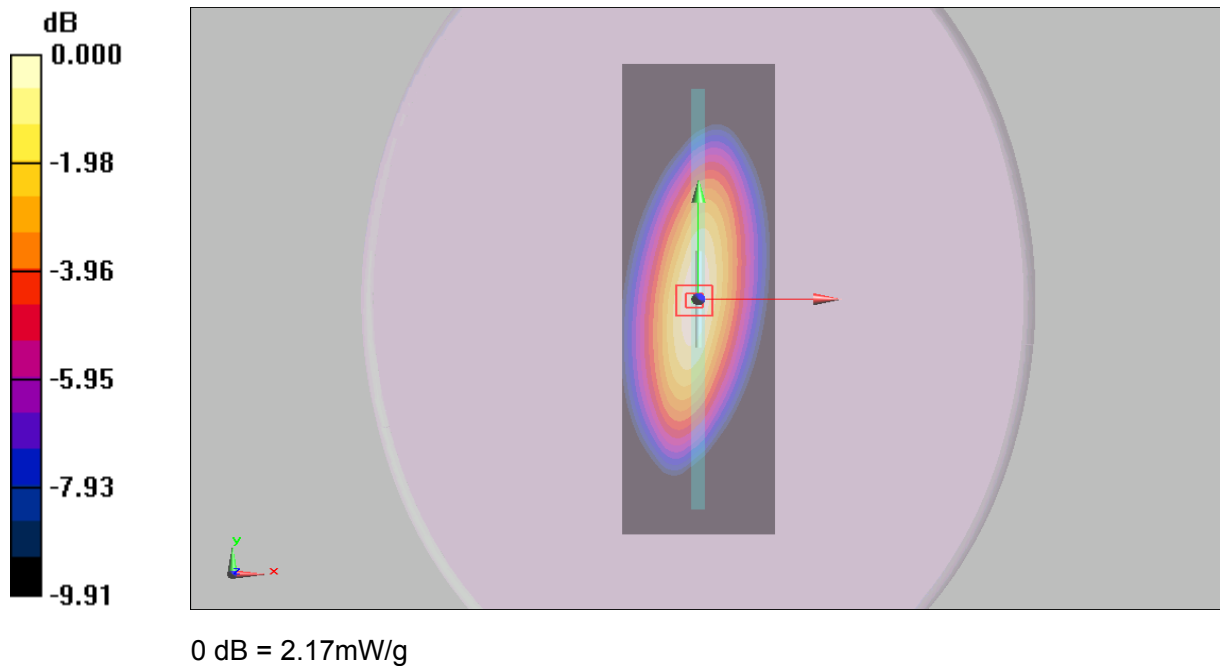


Figure 8 System Performance Check 450MHz 398mW

System Performance Check at 450 MHz Body TSL

DUT: Dipole450 MHz; Type: D450V3; Serial: 1065

Date/Time: 3/20/2012 1:35:21 PM

Communication System: CW; Frequency: 450 MHz; Duty Cycle: 1:1

Medium parameters used: $f = 450 \text{ MHz}$; $\sigma = 0.93 \text{ mho/m}$; $\epsilon_r = 57.53$; $\rho = 1000 \text{ kg/m}^3$

Ambient Temperature: 22.3°C Liquid Temperature: 21.5°C

DASY5 Configuration:

Probe: EX3DV4 - SN3816; ConvF(10.83, 10.83, 10.83) Calibrated: 10/3/2011

Electronics: DAE4 Sn871; Calibrated: 11/22/2011

Phantom: ELI 4.0; Type: QDOVA001BA

Measurement SW: DASY5, V5.2 Build 162; SEMCAD X Version 14.0 Build 59

d=15mm, Pin=398mW/Area Scan (61x221x1): Measurement grid: $dx=15\text{mm}$, $dy=15\text{mm}$

Maximum value of SAR (interpolated) = 1.9 mW/g

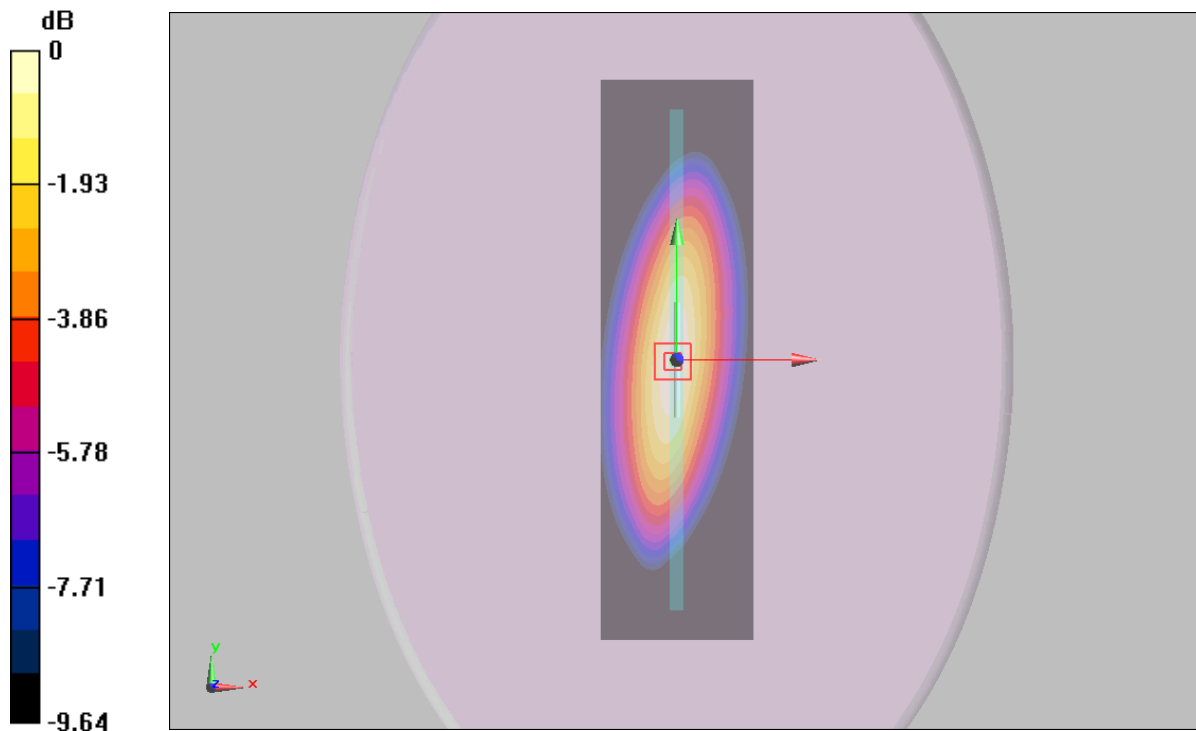
d=15mm, Pin=398mW/Zoom Scan (7x7x7)/Cube 0: Measurement grid: $dx=5\text{mm}$, $dy=5\text{mm}$, $dz=5\text{mm}$

Reference Value = 44.7 V/m ; Power Drift = -0.014 dB

Peak SAR (extrapolated) = 2.64 W/kg

SAR(1 g) = 1.78 mW/g ; SAR(10 g) = 1.17 mW/g

Maximum value of SAR (measured) = 1.89 mW/g



0 dB = 1.89 mW/g

Figure 9 System Performance Check 450MHz 398mW

System Performance Check at 450 MHz Body TSL

DUT: Dipole450 MHz; Type: D450V3; Serial: 1065

Date/Time: 6/1/2012 10:35:21 AM

Communication System: CW; Frequency: 450 MHz; Duty Cycle: 1:1

Medium parameters used: $f = 450 \text{ MHz}$; $\sigma = 0.94 \text{ mho/m}$; $\epsilon_r = 57.49$; $\rho = 1000 \text{ kg/m}^3$

Ambient Temperature: 22.3°C Liquid Temperature: 21.5°C

DASY5 Configuration:

Probe: EX3DV4 - SN3816; ConvF(10.83, 10.83, 10.83) Calibrated: 10/3/2011

Electronics: DAE4 Sn871; Calibrated: 11/22/2011

Phantom: ELI 4.0; Type: QDOVA001BA

Measurement SW: DASY5, V5.2 Build 162; SEMCAD X Version 14.0 Build 59

d=15mm, Pin=398mW/Area Scan (61x221x1): Measurement grid: $dx=15\text{mm}$, $dy=15\text{mm}$

Maximum value of SAR (interpolated) = 1.9 mW/g

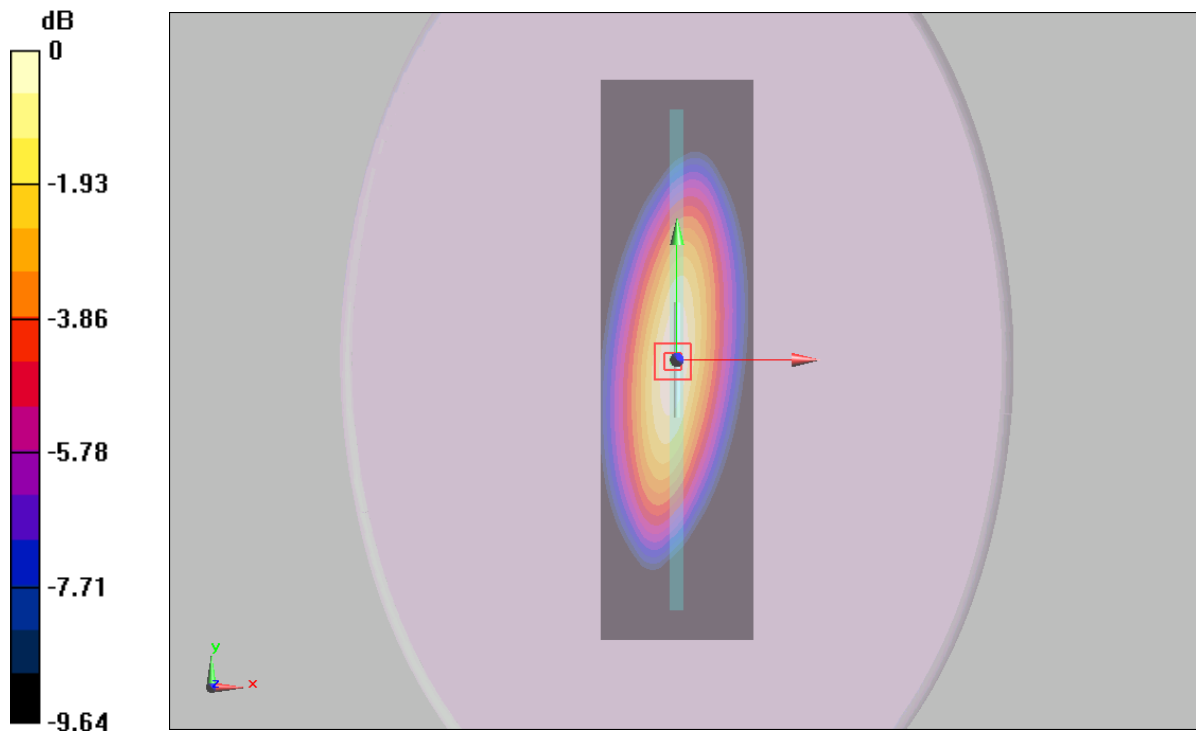
d=15mm, Pin=398mW/Zoom Scan (7x7x7)/Cube 0: Measurement grid: $dx=5\text{mm}$, $dy=5\text{mm}$, $dz=5\text{mm}$

Reference Value = 44.7 V/m ; Power Drift = -0.009 dB

Peak SAR (extrapolated) = 2.64 W/kg

SAR(1 g) = 1.76 mW/g ; SAR(10 g) = 1.19 mW/g

Maximum value of SAR (measured) = 1.91 mW/g



0 dB = 1.91 mW/g

Figure 10 System Performance Check 450MHz 398mW

ANNEX C: Graph Results

Face Held with Thicker Battery, Front towards Phantom 450.5MHz (12.5 KHz Channel Spacing)

Date/Time: 3/20/2012 9:27:10 PM

Communication System: PTT 450; Frequency: 450.5 MHz; Duty Cycle: 1:1

Medium parameters used (interpolated): $f = 450.5$ MHz; $\sigma = 0.883$ mho/m; $\epsilon_r = 44.1$; $\rho = 1000$ kg/m³

Ambient Temperature: 22.3 °C Liquid Temperature: 21.5 °C

Phantom section: Flat Section

DASY5 Configuration:

Probe: EX3DV4 - SN3816; ConvF(9.97, 9.97, 9.97) Calibrated: 10/3/2011

Electronics: DAE4 Sn871; Calibrated: 11/22/2011

Phantom: ELI 4.0; Type: QDOVA001BA

Measurement SW: DASY5, V5.2 Build 162; SEMCAD X Version 14.0 Build 59

Towards Phantom 450.5MHz/Area Scan (51x131x1): Measurement grid: dx=15mm, dy=15mm

Maximum value of SAR (interpolated) = 5.51 mW/g

Towards Phantom 450.5MHz/Zoom Scan (7x7x7)/Cube 0: Measurement grid: dx=5mm, dy=5mm, dz=5mm

Reference Value = 82.1 V/m; Power Drift = -0.011 dB

Peak SAR (extrapolated) = 6.38 W/kg

SAR(1 g) = 5.09 mW/g; SAR(10 g) = 4.01 mW/g

Maximum value of SAR (measured) = 5.31 mW/g

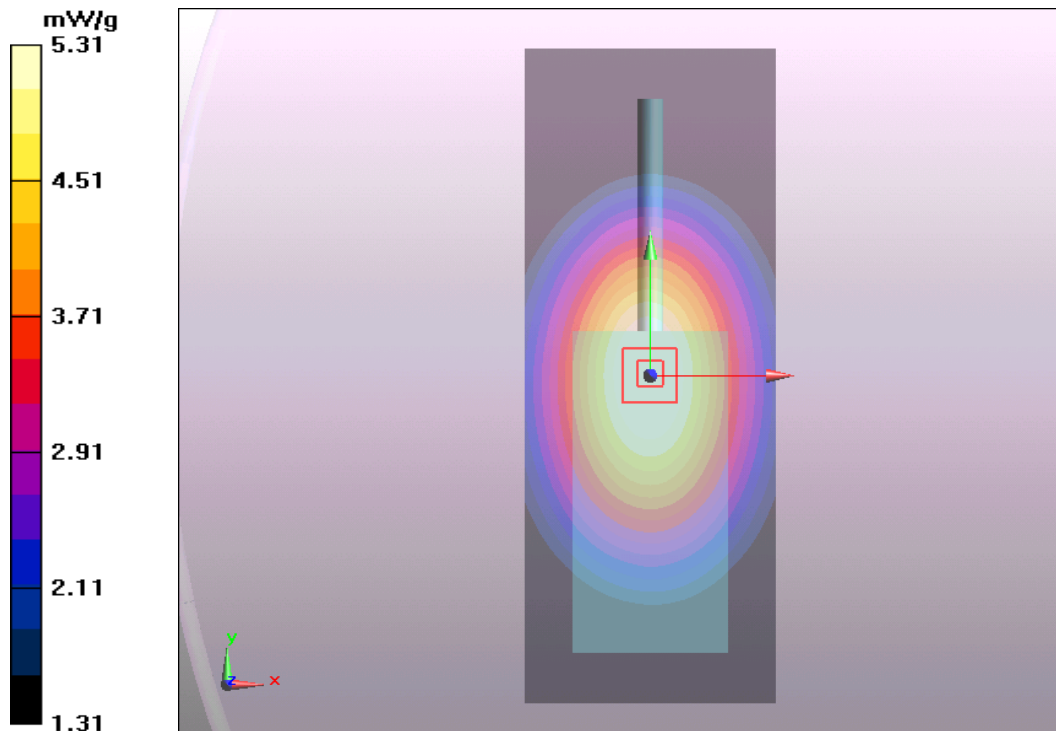


Figure 11 Face Held with Thicker Battery, Front towards Phantom 450.5MHz (12.5 KHz Channel Spacing)

TA Technology (Shanghai) Co., Ltd.
Test Report

Report No. RZA1203-0318SAR01R1

Page 39 of 110

Face Held with Thicker Battery, Front towards Phantom 468.0MHz (12.5 KHz Channel Spacing)

Date/Time: 3/20/2012 9:46:58 PM

Communication System: PTT 450; Frequency: 468 MHz; Duty Cycle: 1:1

Medium parameters used: $f = 468 \text{ MHz}$; $\sigma = 0.897 \text{ mho/m}$; $\epsilon_r = 43.7$; $\rho = 1000 \text{ kg/m}^3$

Ambient Temperature: 22.3°C Liquid Temperature: 21.5°C

Phantom section: Flat Section

DASY5 Configuration:

Probe: EX3DV4 - SN3816; ConvF(9.97, 9.97, 9.97) Calibrated: 10/3/2011

Electronics: DAE4 Sn871; Calibrated: 11/22/2011

Phantom: ELI 4.0; Type: QDOVA001BA0

Measurement SW: DASY5, V5.2 Build 162; SEMCAD X Version 14.0 Build 59

Towards Phantom 468.0MHz/Area Scan (51x131x1): Measurement grid: $dx=15\text{mm}$, $dy=15\text{mm}$

Maximum value of SAR (interpolated) = 5.93 mW/g

Towards Phantom 468.0MHz/Zoom Scan (7x7x7)/Cube 0: Measurement grid: $dx=5\text{mm}$, $dy=5\text{mm}$, $dz=5\text{mm}$

Reference Value = 83.4 V/m ; Power Drift = -0.189 dB

Peak SAR (extrapolated) = 7.07 W/kg

SAR(1 g) = 5.57 mW/g ; SAR(10 g) = 4.35 mW/g

Maximum value of SAR (measured) = 5.8 mW/g

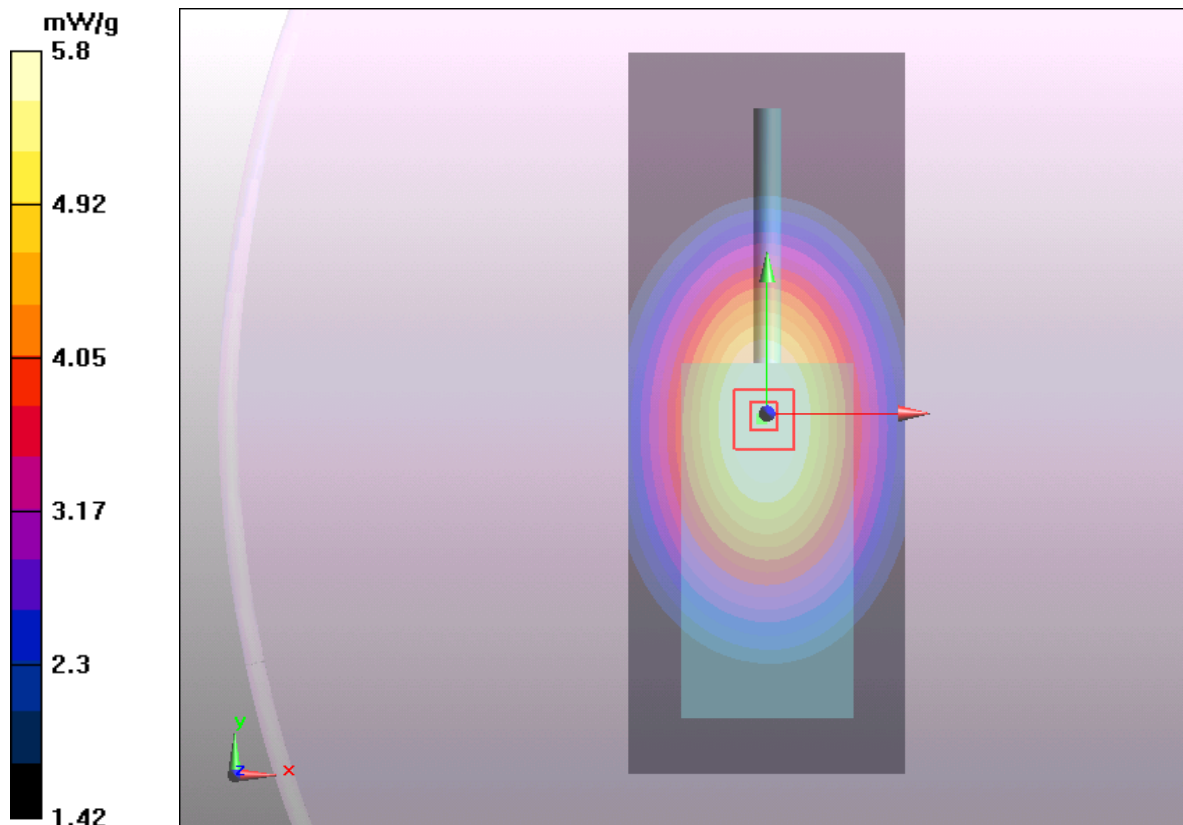


Figure 12 Face Held with Thicker Battery, Front towards Phantom 468.0MHz (12.5 KHz Channel Spacing)

TA Technology (Shanghai) Co., Ltd.

Test Report

Report No. RZA1203-0318SAR01R1

Page 40 of 110

Face Held with Thicker Battery, Front towards Phantom 485.5MHz (12.5 KHz Channel Spacing)

Date/Time: 3/20/2012 10:16:58 PM

Communication System: PTT 450; Frequency: 485.5 MHz; Duty Cycle: 1:1

Medium parameters used (interpolated): $f = 485.5$ MHz; $\sigma = 0.909$ mho/m; $\epsilon_r = 43.3$; $\rho = 1000$ kg/m³

Ambient Temperature: 22.3 °C Liquid Temperature: 21.5 °C

Phantom section: Flat Section

DASY5 Configuration:

Probe: EX3DV4 - SN3816; ConvF(9.97, 9.97, 9.97) Calibrated: 10/3/2011

Electronics: DAE4 Sn871; Calibrated: 11/22/2011

Phantom: ELI 4.0; Type: QDOVA001BA

Measurement SW: DASY5, V5.2 Build 162; SEMCAD X Version 14.0 Build 59

Towards Phantom 485.5MHz/Area Scan (51x131x1): Measurement grid: dx=15mm, dy=15mm

Maximum value of SAR (interpolated) = 7.91 mW/g

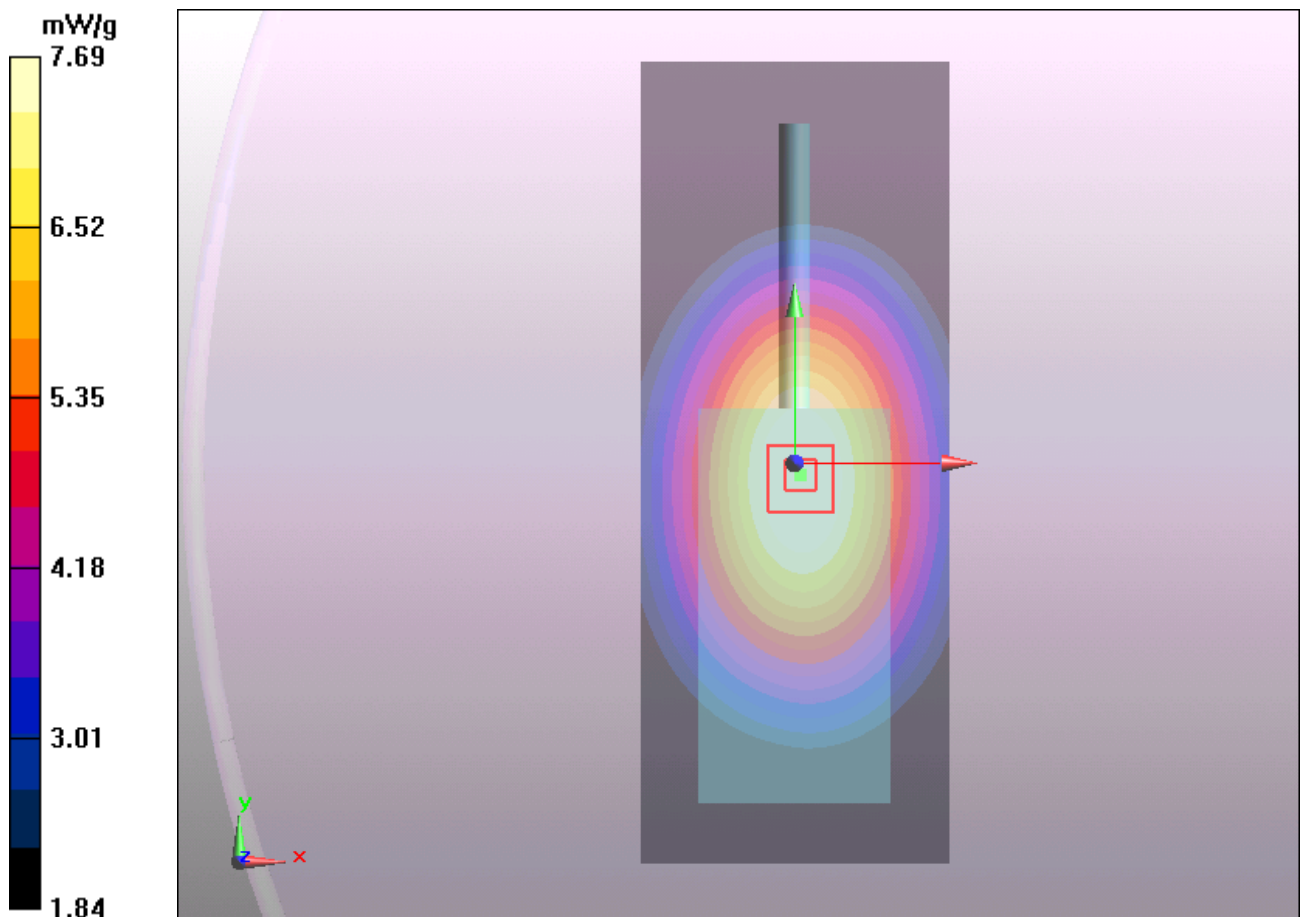
Towards Phantom 485.5MHz/Zoom Scan (7x7x7)/Cube 0: Measurement grid: dx=5mm, dy=5mm, dz=5mm

Reference Value = 97.1 V/m; Power Drift = -0.063 dB

Peak SAR (extrapolated) = 9.39 W/kg

SAR(1 g) = 7.36 mW/g; SAR(10 g) = 5.68 mW/g

Maximum value of SAR (measured) = 7.69 mW/g



TA Technology (Shanghai) Co., Ltd.
Test Report

Report No. RZA1203-0318SAR01R1

Page 41 of 110

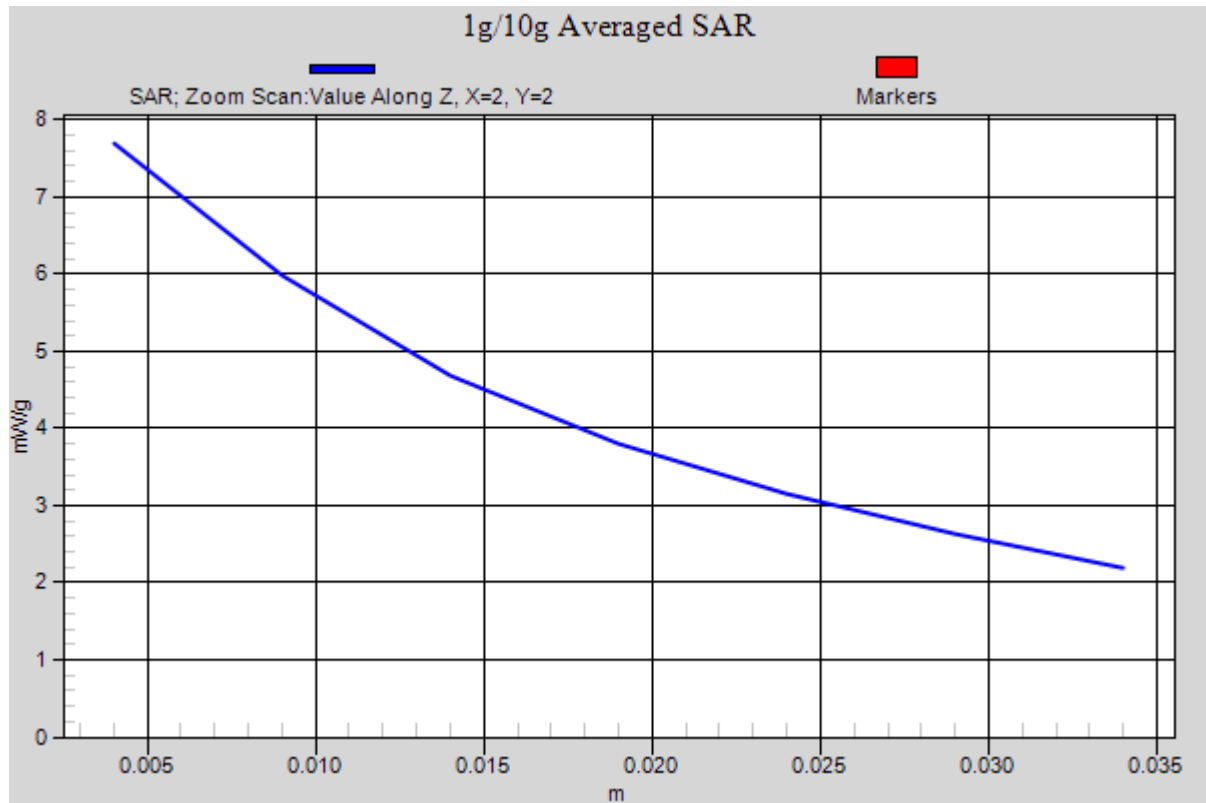


Figure 13 Face Held with Thicker Battery, Front towards Phantom 485.5MHz (12.5 KHz Channel Spacing)

TA Technology (Shanghai) Co., Ltd.
Test Report

Report No. RZA1203-0318SAR01R1

Page 42 of 110

Face Held with Thicker Battery, Front towards Phantom 503.0MHz

Date/Time: 3/20/2012 10:42:45 PM

Communication System: PTT 450; Frequency: 503 MHz; Duty Cycle: 1:1

Medium parameters used: $f = 503 \text{ MHz}$; $\sigma = 0.909 \text{ mho/m}$; $\epsilon_r = 43$; $\rho = 1000 \text{ kg/m}^3$

Ambient Temperature: 22.3°C Liquid Temperature: 21.5°C

Phantom section: Flat Section

DASY5 Configuration:

Probe: EX3DV4 - SN3816; ConvF(9.97, 9.97, 9.97) Calibrated: 10/3/2011

Electronics: DAE4 Sn871; Calibrated: 11/22/2011

Phantom: ELI 4.0; Type: QDOVA001BA

Measurement SW: DASY5, V5.2 Build 162; SEMCAD X Version 14.0 Build 59

Towards Phantom 503.0MHz/Area Scan (51x131x1): Measurement grid: $dx=15\text{mm}$, $dy=15\text{mm}$

Maximum value of SAR (interpolated) = 7.05 mW/g

Towards Phantom 503.0MHz/Zoom Scan (7x7x7)/Cube 0: Measurement grid: $dx=5\text{mm}$, $dy=5\text{mm}$, $dz=5\text{mm}$

Reference Value = 89.9 V/m ; Power Drift = -0.155 dB

Peak SAR (extrapolated) = 8.49 W/kg

SAR(1 g) = 6.63 mW/g ; SAR(10 g) = 5.08 mW/g

Maximum value of SAR (measured) = 6.95 mW/g

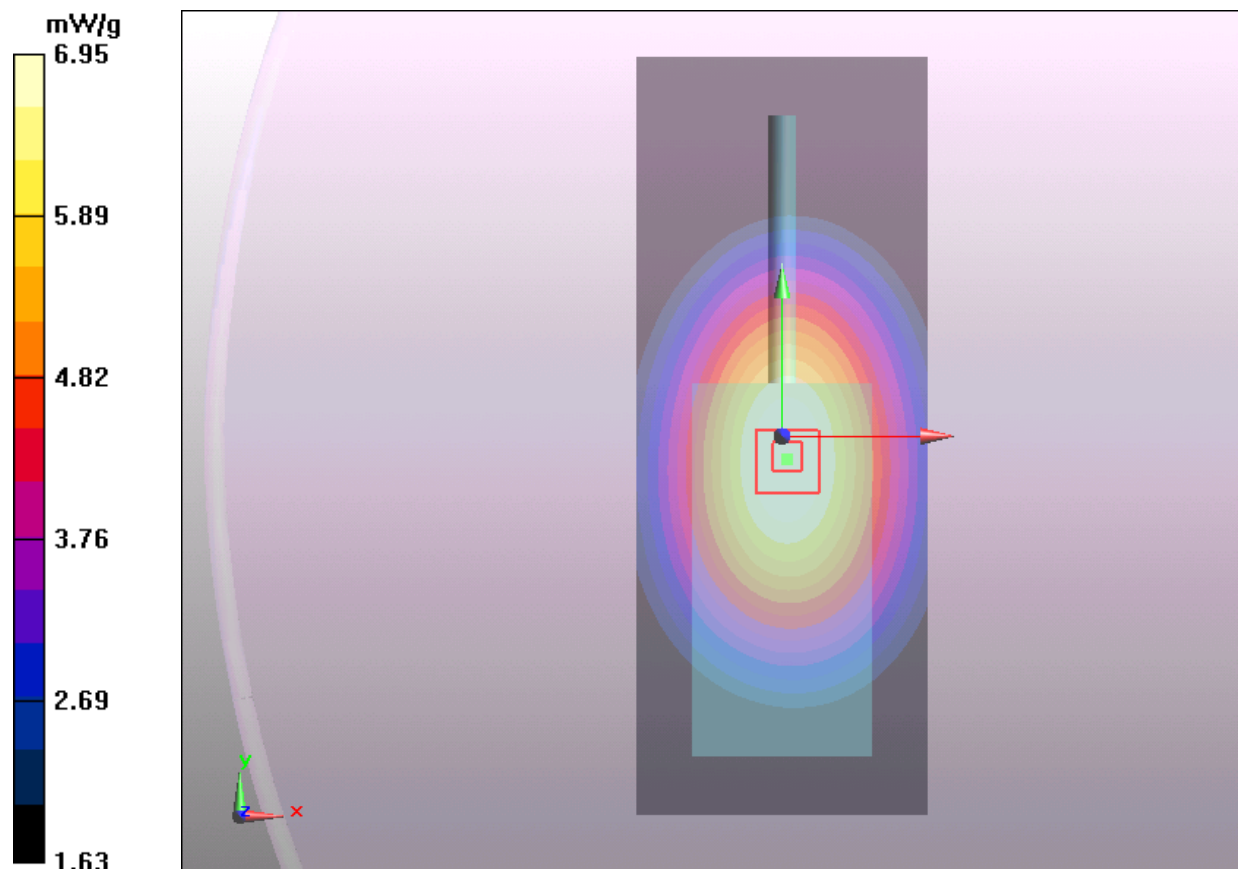


Figure 14 Face Held for 12.5 KHz with Thicker Battery, Front towards Phantom 503.0MHz (12.5 KHz Channel Spacing)

TA Technology (Shanghai) Co., Ltd.
Test Report

Report No. RZA1203-0318SAR01R1

Page 43 of 110

Face Held with Thicker Battery, Front towards Phantom 511.5MHz (12.5 KHz Channel Spacing)

Date/Time: 6/1/2012 1:41:42 PM

Communication System: PTT 450; Frequency: 511.5 MHz; Duty Cycle: 1:1

Medium parameters used: $f = 512 \text{ MHz}$; $\sigma = 0.908 \text{ mho/m}$; $\epsilon_r = 43.1$; $\rho = 1000 \text{ kg/m}^3$

Ambient Temperature: 22.3°C Liquid Temperature: 21.5°C

Phantom section: Flat Section

DASY5 Configuration:

Probe: EX3DV4 - SN3816; ConvF(9.97, 9.97, 9.97) Calibrated: 10/3/2011

Electronics: DAE4 Sn871; Calibrated: 11/22/2011

Phantom: ELI 4.0; Type: QDOVA001BA

Measurement SW: DASY5, V5.2 Build 162; SEMCAD X Version 14.0 Build 59

Towards Phantom 511.5MHz/Area Scan (51x131x1): Measurement grid: $dx=15\text{mm}$, $dy=15\text{mm}$
Maximum value of SAR (interpolated) = 6.65 mW/g

Towards Phantom 511.5MHz/Zoom Scan (7x7x7)/Cube 0: Measurement grid: $dx=5\text{mm}$, $dy=5\text{mm}$, $dz=5\text{mm}$

Reference Value = 88.4 V/m ; Power Drift = -0.040 dB

Peak SAR (extrapolated) = 7.6 W/kg

SAR(1 g) = 6.15 mW/g ; SAR(10 g) = 4.73 mW/g

Maximum value of SAR (measured) = 6.45 mW/g

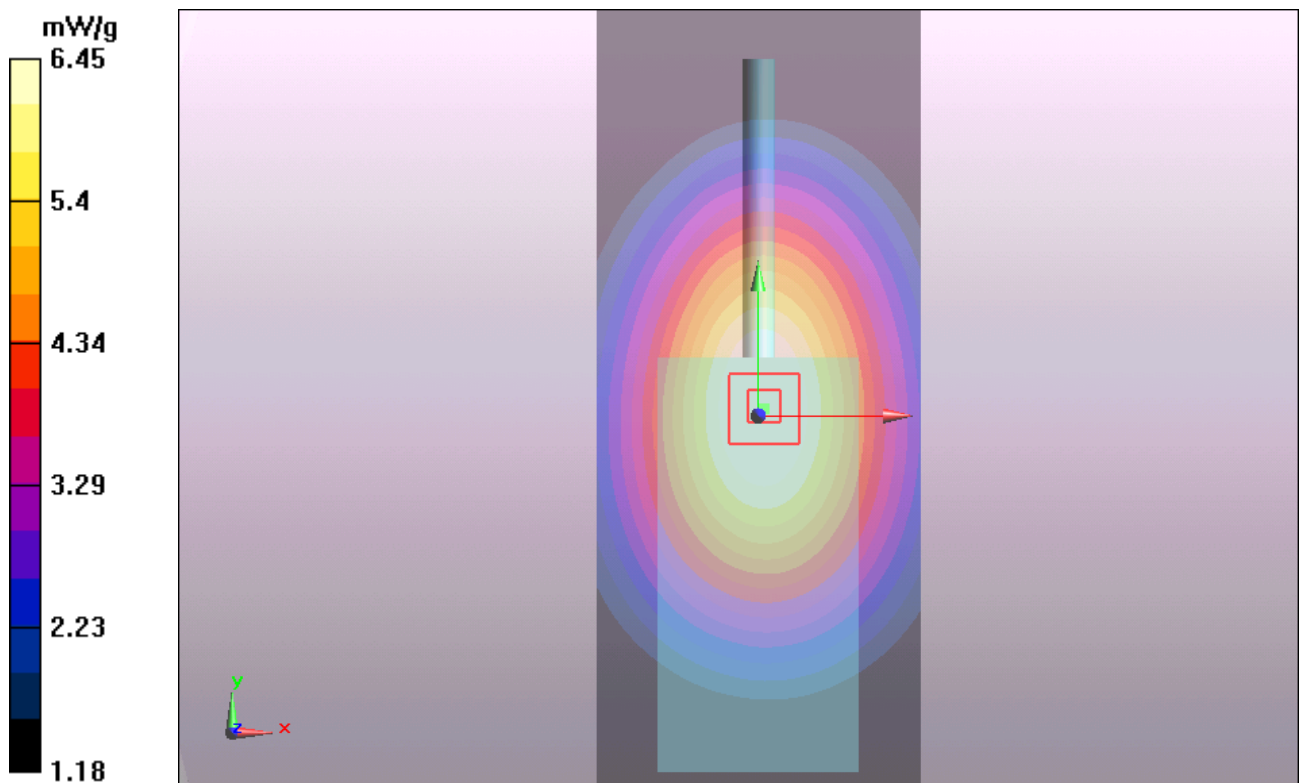


Figure 15 Face Held with Thicker Battery, Front towards Phantom 511.5MHz (12.5 KHz Channel Spacing)

TA Technology (Shanghai) Co., Ltd.
Test Report

Report No. RZA1203-0318SAR01R1

Page 44 of 110

Face Held with Thinner Battery, Front towards Phantom 485.5MHz (12.5 KHz Channel Spacing)

Date/Time: 3/20/2012 11:30:59 PM

Communication System: PTT 450; Frequency: 485.5 MHz; Duty Cycle: 1:1

Medium parameters used (interpolated): $f = 485.5$ MHz; $\sigma = 0.909$ mho/m; $\epsilon_r = 43.3$; $\rho = 1000$ kg/m³

Ambient Temperature: 22.3 °C Liquid Temperature: 21.5 °C

Phantom section: Flat Section

DASY5 Configuration:

Probe: EX3DV4 - SN3816; ConvF(9.97, 9.97, 9.97) Calibrated: 10/3/2011

Electronics: DAE4 Sn871; Calibrated: 11/22/2011

Phantom: ELI 4.0; Type: QDOVA001BA

Measurement SW: DASY5, V5.2 Build 162; SEMCAD X Version 14.0 Build 59

Towards Phantom 485.5MHz/Area Scan (51x131x1): Measurement grid: dx=15mm, dy=15mm

Maximum value of SAR (interpolated) = 7.88 mW/g

Towards Phantom 485.5MHz/Zoom Scan (7x7x7)/Cube 0: Measurement grid: dx=5mm, dy=5mm, dz=5mm

Reference Value = 97.1 V/m; Power Drift = -0.085 dB

Peak SAR (extrapolated) = 9.34 W/kg

SAR(1 g) = 7.32 mW/g; SAR(10 g) = 5.64 mW/g

Maximum value of SAR (measured) = 7.65 mW/g

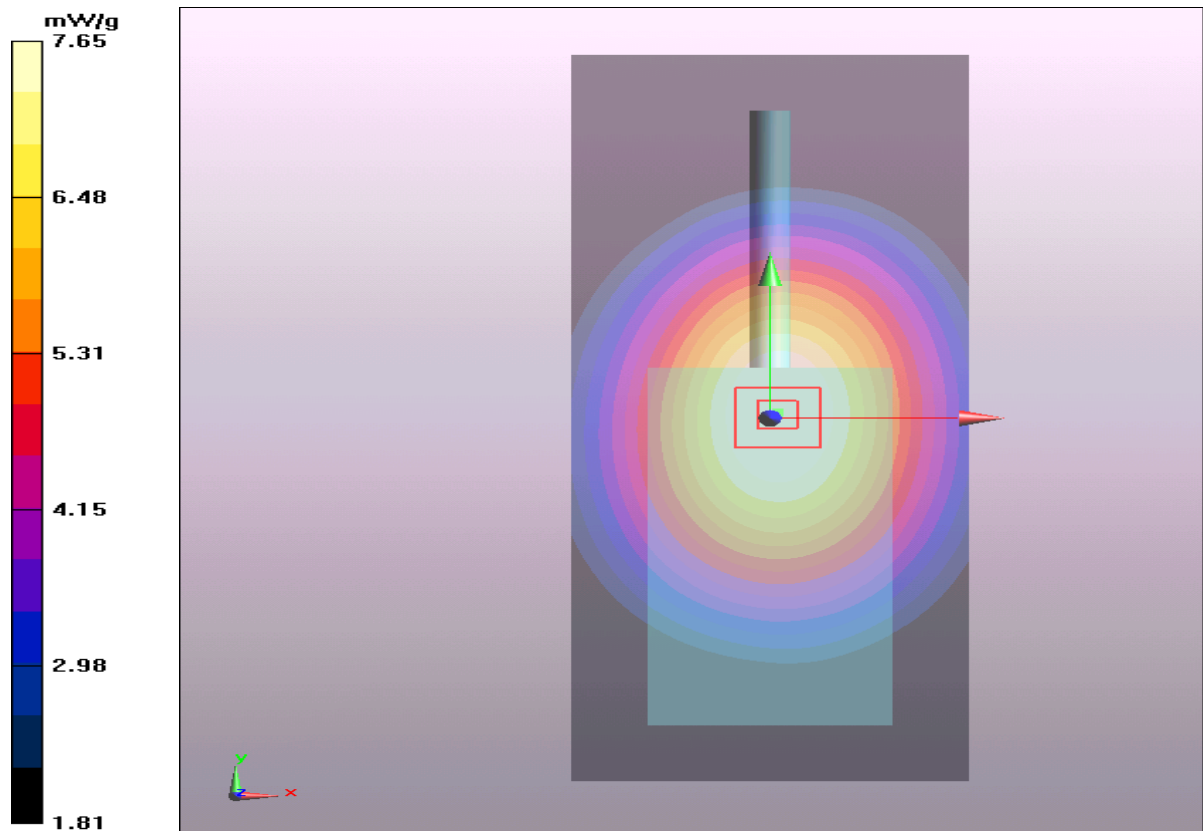


Figure 16 Face Held with Thinner Battery, Front towards Phantom 485.5MHz (12.5 KHz Channel Spacing)

**Body-Worn with Thinner Battery, Belt and Accessory 1, Front towards Ground
450.5MHz (12.5 KHz Channel Spacing)**

Date/Time: 3/20/2012 4:12:15 PM

Communication System: PTT 450; Frequency: 450.5 MHz; Duty Cycle: 1:1

Medium parameters used (interpolated): $f = 450.5$ MHz; $\sigma = 0.929$ mho/m; $\epsilon_r = 57.5$; $\rho = 1000$ kg/m³

Ambient Temperature: 22.3 °C Liquid Temperature: 21.5 °C

Phantom section: Flat Section

DASY5 Configuration:

Probe: EX3DV4 - SN3816; ConvF(10.83, 10.83, 10.83) Calibrated: 10/3/2011

Electronics: DAE4 Sn871; Calibrated: 11/22/2011

Phantom: ELI 4.0; Type: QDOVA001BA

Measurement SW: DASY5, V5.2 Build 162; SEMCAD X Version 14.0 Build 59

Towards Ground 450.5MHz/Area Scan (51x121x1): Measurement grid: dx=15mm, dy=15mm
Maximum value of SAR (interpolated) = 9.95 mW/g

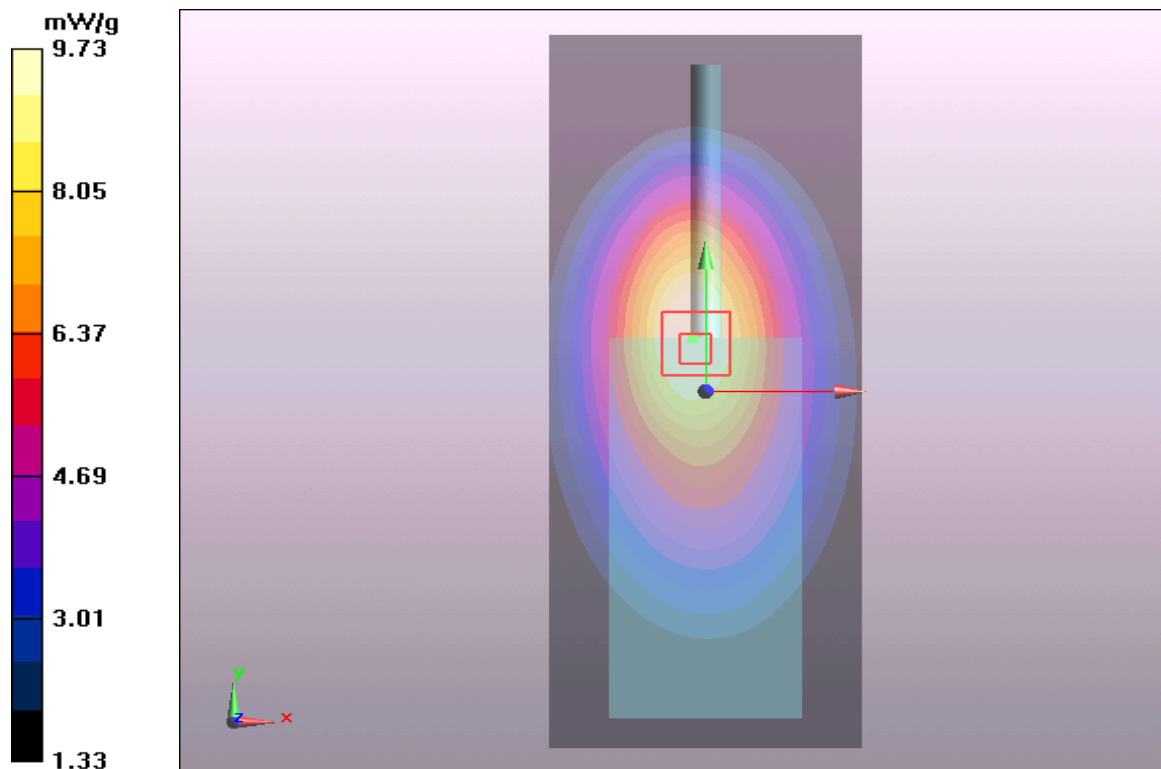
Towards Ground 450.5MHz/Zoom Scan (7x7x7)/Cube 0: Measurement grid: dx=5mm, dy=5mm, dz=5mm

Reference Value = 104.5 V/m; Power Drift = -0.076 dB

Peak SAR (extrapolated) = 12.2 W/kg

SAR(1 g) = 9.22 mW/g; SAR(10 g) = 6.72 mW/g

Maximum value of SAR (measured) = 9.73 mW/g



**Figure 17 Body-Worn with Thinner Battery, Belt and Accessory 1, Front towards Ground
450.5MHz (12.5 KHz Channel Spacing)**

**Body-Worn with Thinner Battery, Belt and Accessory 1, Front towards Ground
468.0MHz (12.5 KHz Channel Spacing)**

Date/Time: 3/20/2012 4:34:38 PM

Communication System: PTT 450; Frequency: 468 MHz; Duty Cycle: 1:1

Medium parameters used: $f = 468$ MHz; $\sigma = 0.938$ mho/m; $\epsilon_r = 57.2$; $\rho = 1000$ kg/m³

Ambient Temperature: 22.3 °C Liquid Temperature: 21.5 °C

Phantom section: Flat Section

DASY5 Configuration:

Probe: EX3DV4 - SN3816; ConvF(10.83, 10.83, 10.83) Calibrated: 10/3/2011

Electronics: DAE4 Sn871; Calibrated: 11/22/2011

Phantom: ELI 4.0; Type: QDOVA001BA

Measurement SW: DASY5, V5.2 Build 162; SEMCAD X Version 14.0 Build 59

Towards Ground 468.0MHz/Area Scan (51x121x1): Measurement grid: dx=15mm, dy=15mm
Maximum value of SAR (interpolated) = 11.4 mW/g

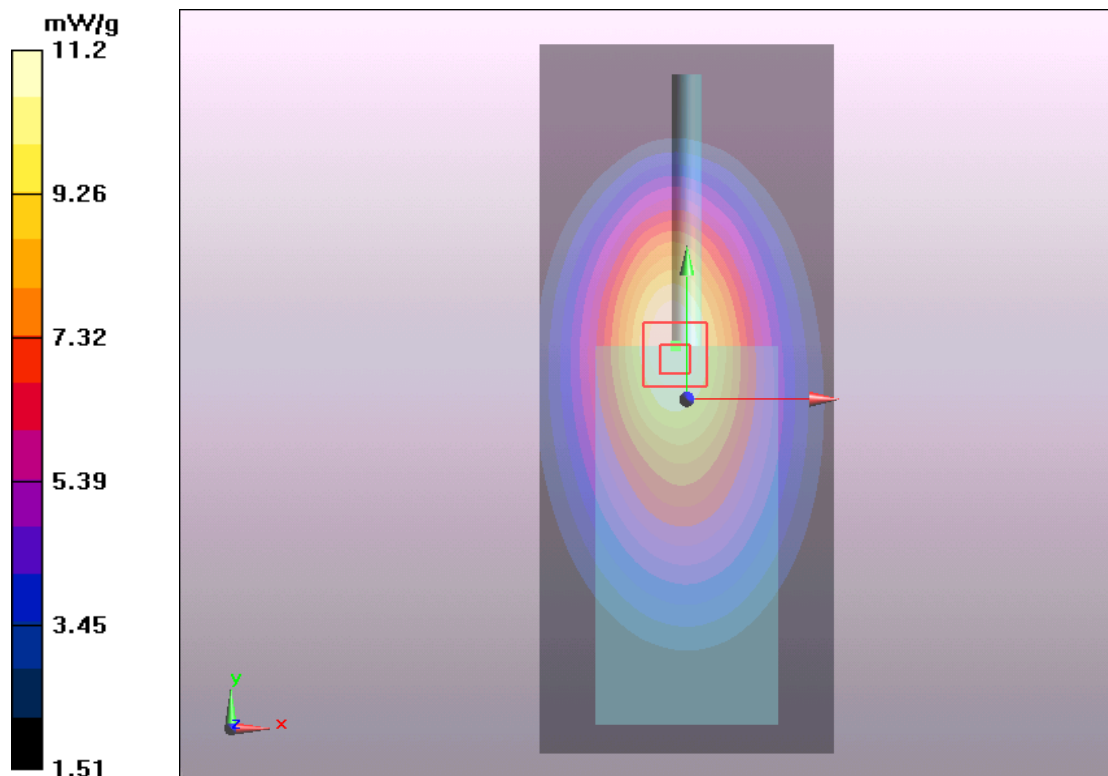
Towards Ground 468.0MHz/Zoom Scan (7x7x7)/Cube 0: Measurement grid: dx=5mm, dy=5mm, dz=5mm

Reference Value = 109.3 V/m; Power Drift = -0.096 dB

Peak SAR (extrapolated) = 14.2 W/kg

SAR(1 g) = 10.6 mW/g; SAR(10 g) = 7.69 mW/g

Maximum value of SAR (measured) = 11.2 mW/g



**Figure 18 Body-Worn with Thinner Battery, Belt and Accessory 1, Front towards Ground
468.0MHz (12.5 KHz Channel Spacing)**

**Body-Worn with Thinner Battery, Belt and Accessory 1, Front towards Ground
485.5MHz (12.5 KHz Channel Spacing)**

Date/Time: 3/20/2012 3:05:25 PM

Communication System: PTT 450; Frequency: 485.5 MHz; Duty Cycle: 1:1

Medium parameters used: $f = 486 \text{ MHz}$; $\sigma = 0.959 \text{ mho/m}$; $\epsilon_r = 57$; $\rho = 1000 \text{ kg/m}^3$

Ambient Temperature: 22.3°C Liquid Temperature: 21.5°C

Phantom section: Flat Section

DASY5 Configuration:

Probe: EX3DV4 - SN3816; ConvF(10.83, 10.83, 10.83) Calibrated: 10/3/2011

Electronics: DAE4 Sn871; Calibrated: 11/22/2011

Phantom: ELI 4.0; Type: QDOVA001BA

Measurement SW: DASY5, V5.2 Build 162; SEMCAD X Version 14.0 Build 59

Towards Ground 485.5MHz/Area Scan (51x121x1): Measurement grid: $dx=15\text{mm}$, $dy=15\text{mm}$
Maximum value of SAR (interpolated) = 13.4 mW/g

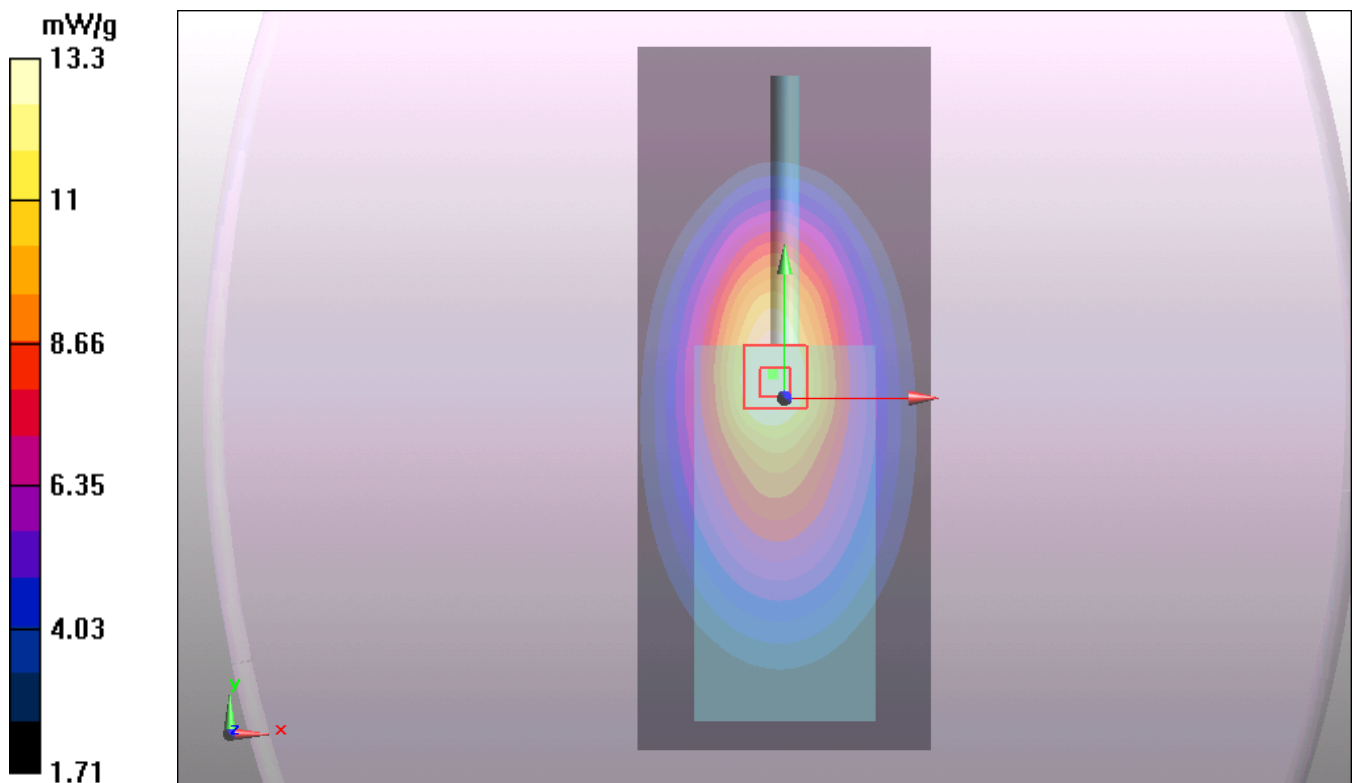
Towards Ground 485.5MHz/Zoom Scan (7x7x7)/Cube 0: Measurement grid: $dx=5\text{mm}$, $dy=5\text{mm}$,
 $dz=5\text{mm}$

Reference Value = 122.2 V/m ; Power Drift = -0.018 dB

Peak SAR (extrapolated) = 17.4 W/kg

SAR(1 g) = 12.5 mW/g ; SAR(10 g) = 8.93 mW/g

Maximum value of SAR (measured) = 13.3 mW/g



**Figure 19 Body-Worn with Thinner Battery, Belt and Accessory 1, Front towards Ground
485.5MHz (12.5 KHz Channel Spacing)**

**Body-Worn with Thinner Battery, Belt and Accessory 1, Front towards Ground
503.0MHz (12.5 KHz Channel Spacing)**

Date/Time: 3/20/2012 5:24:02 PM

Communication System: PTT 450; Frequency: 503 MHz; Duty Cycle: 1:1

Medium parameters used (interpolated): $f = 503 \text{ MHz}$; $\sigma = 0.982 \text{ mho/m}$; $\epsilon_r = 56.5$; $\rho = 1000 \text{ kg/m}^3$

Ambient Temperature: 22.3°C Liquid Temperature: 21.5°C

Phantom section: Flat Section

DASY5 Configuration:

Probe: EX3DV4 - SN3816; ConvF(10.83, 10.83, 10.83) Calibrated: 10/3/2011

Electronics: DAE4 Sn871; Calibrated: 11/22/2011

Phantom: ELI 4.0; Type: QDOVA001BA

Measurement SW: DASY5, V5.2 Build 162; SEMCAD X Version 14.0 Build 59

Towards Ground 503.0MHz/Area Scan (51x121x1): Measurement grid: $dx=15\text{mm}$, $dy=15\text{mm}$
Maximum value of SAR (interpolated) = 11.2 mW/g

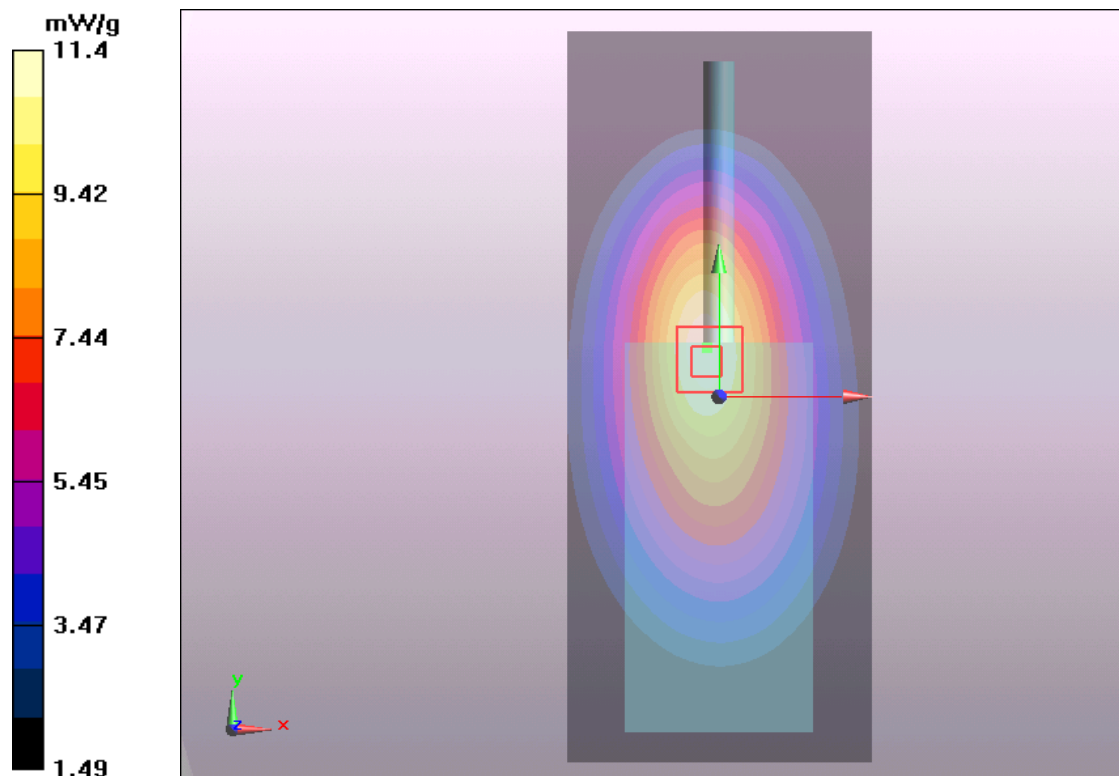
Towards Ground 503.0MHz/Zoom Scan (7x7x7)/Cube 0: Measurement grid: $dx=5\text{mm}$, $dy=5\text{mm}$,
 $dz=5\text{mm}$

Reference Value = 107.0 V/m ; Power Drift = -0.005 dB

Peak SAR (extrapolated) = 14.7 W/kg

SAR(1 g) = 10.7 mW/g ; SAR(10 g) = 7.69 mW/g

Maximum value of SAR (measured) = 11.4 mW/g



**Figure 20 Body-Worn with Thinner Battery, Belt and Accessory 1, Front towards Ground
503.0MHz (12.5 KHz Channel Spacing)**

**Body-Worn with Thinner Battery, Belt and Accessory 1, Front towards Ground
511.5MHz (12.5 KHz Channel Spacing)**

Date/Time: 6/1/2012 2:28:48 PM

Communication System: PTT 450; Frequency: 511.5 MHz; Duty Cycle: 1:1

Medium parameters used: $f = 512 \text{ MHz}$; $\sigma = 0.99 \text{ mho/m}$; $\epsilon_r = 56.3$; $\rho = 1000 \text{ kg/m}^3$

Ambient Temperature: 22.3°C Liquid Temperature: 21.5°C

Phantom section: Flat Section

DASY5 Configuration:

Probe: EX3DV4 - SN3816; ConvF(10.83, 10.83, 10.83) Calibrated: 10/3/2011

Electronics: DAE4 Sn871; Calibrated: 11/22/2011

Phantom: ELI 4.0; Type: QDOVA001BA

Measurement SW: DASY5, V5.2 Build 162; SEMCAD X Version 14.0 Build 59

Towards Ground 511.5MHz/Area Scan (51x121x1): Measurement grid: $dx=15\text{mm}$, $dy=15\text{mm}$
Maximum value of SAR (interpolated) = 11.4 mW/g

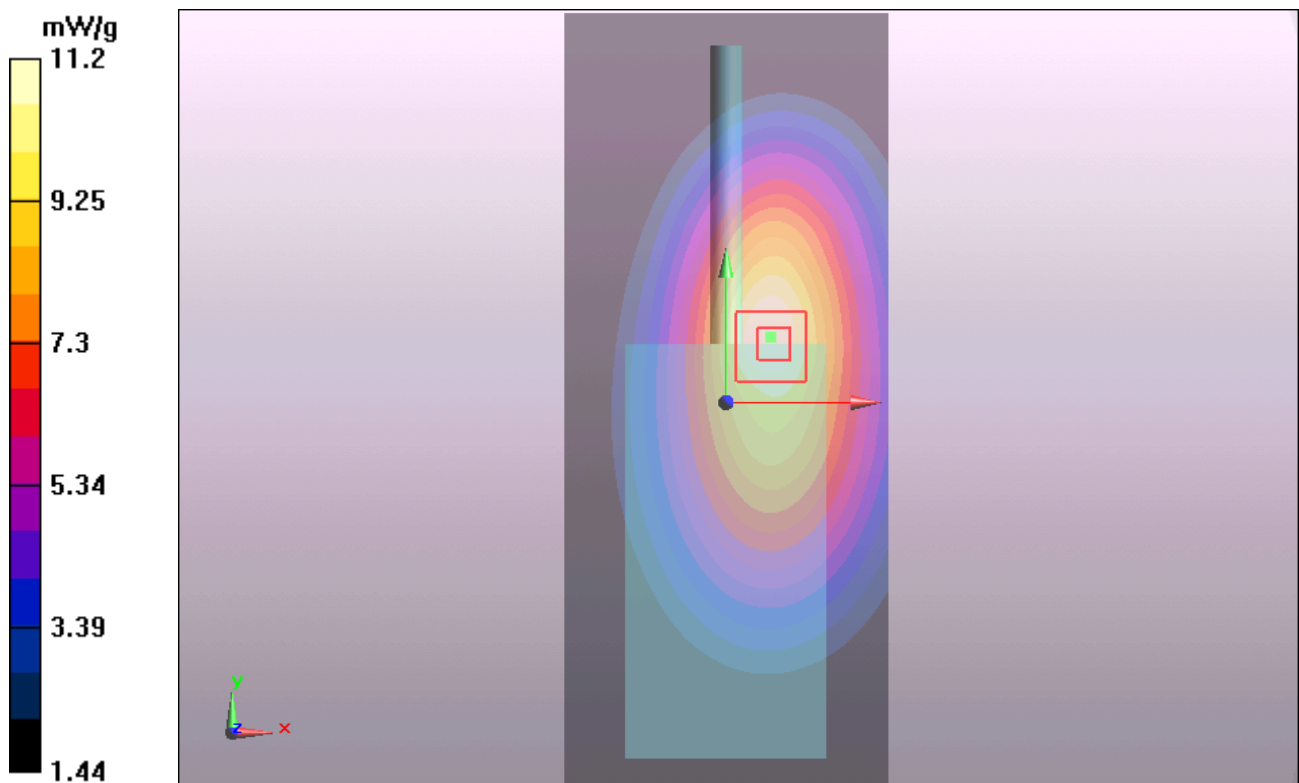
Towards Ground 511.5MHz/Zoom Scan (7x7x7)/Cube 0: Measurement grid: $dx=5\text{mm}$, $dy=5\text{mm}$,
 $dz=5\text{mm}$

Reference Value = 95.6 V/m ; Power Drift = -0.082 dB

Peak SAR (extrapolated) = 14.1 W/kg

SAR(1 g) = 10.6 mW/g ; SAR(10 g) = 7.51 mW/g

Maximum value of SAR (measured) = 11.2 mW/g



**Figure 21 Body-Worn with Thinner Battery, Belt and Accessory 1, Front towards Ground
511.5MHz (12.5 KHz Channel Spacing)**

TA Technology (Shanghai) Co., Ltd.
Test Report

Report No. RZA1203-0318SAR01R1

Page 50 of 110

Body-Worn with Thinner Battery, Belt, Accessory 1 and Earphone 1, Front towards Ground 485.5MHz (12.5 KHz Channel Spacing)

Date/Time: 3/21/2012 12:21:24 AM

Communication System: PTT 450; Frequency: 485.5 MHz; Duty Cycle: 1:1

Medium parameters used: $f = 486 \text{ MHz}$; $\sigma = 0.959 \text{ mho/m}$; $\epsilon_r = 57$; $\rho = 1000 \text{ kg/m}^3$

Ambient Temperature: 22.3°C Liquid Temperature: 21.5°C

Phantom section: Flat Section

DASY5 Configuration:

Probe: EX3DV4 - SN3816; ConvF(10.83, 10.83, 10.83) Calibrated: 10/3/2011

Electronics: DAE4 Sn871; Calibrated: 11/22/2011

Phantom: ELI 4.0; Type: QDOVA001BA

Measurement SW: DASY5, V5.2 Build 162; SEMCAD X Version 14.0 Build 59

Towards Ground 485.5MHz/Area Scan (51x121x1): Measurement grid: $dx=15\text{mm}$, $dy=15\text{mm}$

Maximum value of SAR (interpolated) = 12.7 mW/g

Towards Ground 485.5MHz/Zoom Scan (7x7x7)/Cube 0: Measurement grid: $dx=5\text{mm}$, $dy=5\text{mm}$, $dz=5\text{mm}$

Reference Value = 119.7 V/m ; Power Drift = -0.048 dB

Peak SAR (extrapolated) = 16.2 W/kg

SAR(1 g) = 12 mW/g ; SAR(10 g) = 8.62 mW/g

Maximum value of SAR (measured) = 12.7 mW/g

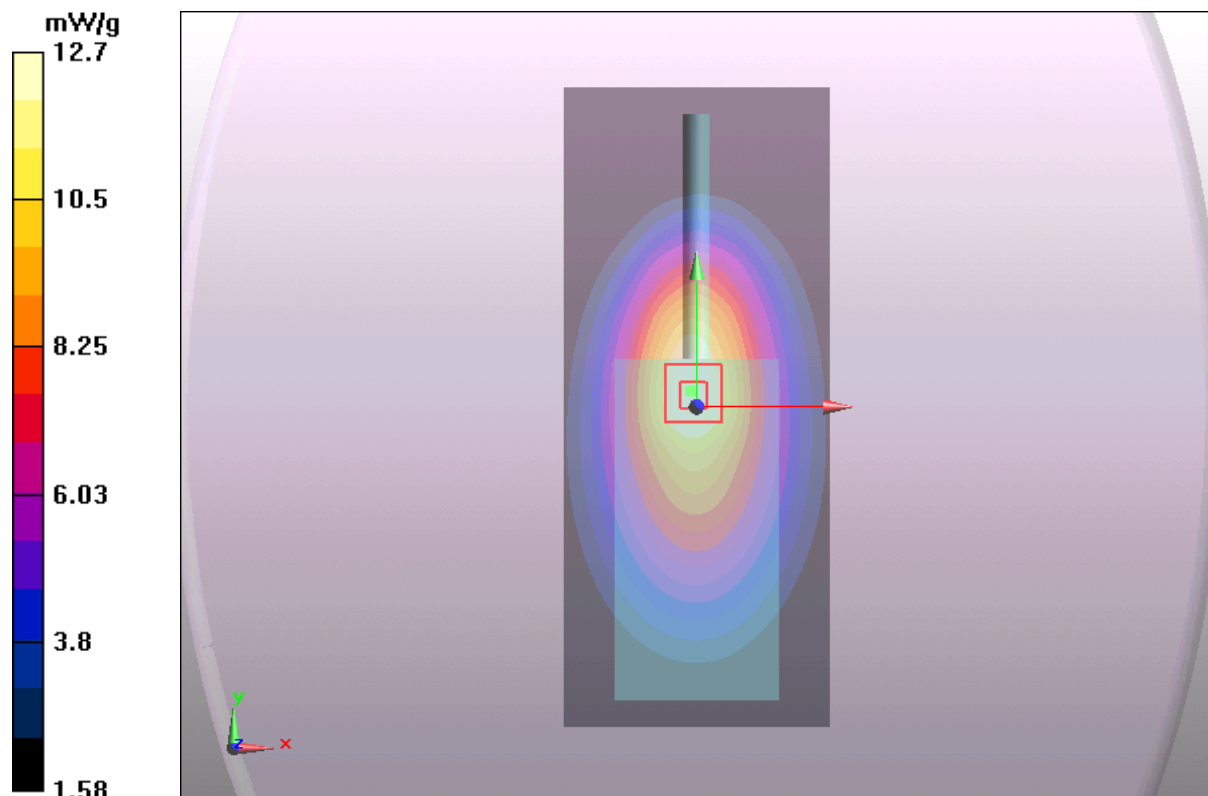


Figure 22 Body-Worn with Thinner Battery, Belt, Accessory 1 and Earphone 1, Front towards Ground 485.5MHz (12.5 KHz Channel Spacing)

TA Technology (Shanghai) Co., Ltd.
Test Report

Report No. RZA1203-0318SAR01R1

Page 51 of 110

Body-Worn with Thinner Battery, Belt, Accessory 1 and Earphone 2, Front towards Ground 485.5MHz (12.5 KHz Channel Spacing)

Date/Time: 3/21/2012 1:05:20 AM

Communication System: PTT 450; Frequency: 485.5 MHz; Duty Cycle: 1:1

Medium parameters used: $f = 486 \text{ MHz}$; $\sigma = 0.959 \text{ mho/m}$; $\epsilon_r = 57$; $\rho = 1000 \text{ kg/m}^3$

Ambient Temperature: 22.3°C Liquid Temperature: 21.5°C

Phantom section: Flat Section

DASY5 Configuration:

Probe: EX3DV4 - SN3816; ConvF(10.83, 10.83, 10.83) Calibrated: 10/3/2011

Electronics: DAE4 Sn871; Calibrated: 11/22/2011

Phantom: ELI 4.0; Type: QDOVA001BA

Measurement SW: DASY5, V5.2 Build 162; SEMCAD X Version 14.0 Build 59

Towards Ground 485.5MHz/Area Scan (51x121x1): Measurement grid: $dx=15\text{mm}$, $dy=15\text{mm}$

Maximum value of SAR (interpolated) = 13.4 mW/g

Towards Ground 485.5MHz/Zoom Scan (7x7x7)/Cube 0: Measurement grid: $dx=5\text{mm}$, $dy=5\text{mm}$, $dz=5\text{mm}$

Reference Value = 122.9 V/m ; Power Drift = -0.037 dB

Peak SAR (extrapolated) = 17.1 W/kg

SAR(1 g) = 12.6 mW/g ; SAR(10 g) = 9.05 mW/g

Maximum value of SAR (measured) = 13.3 mW/g

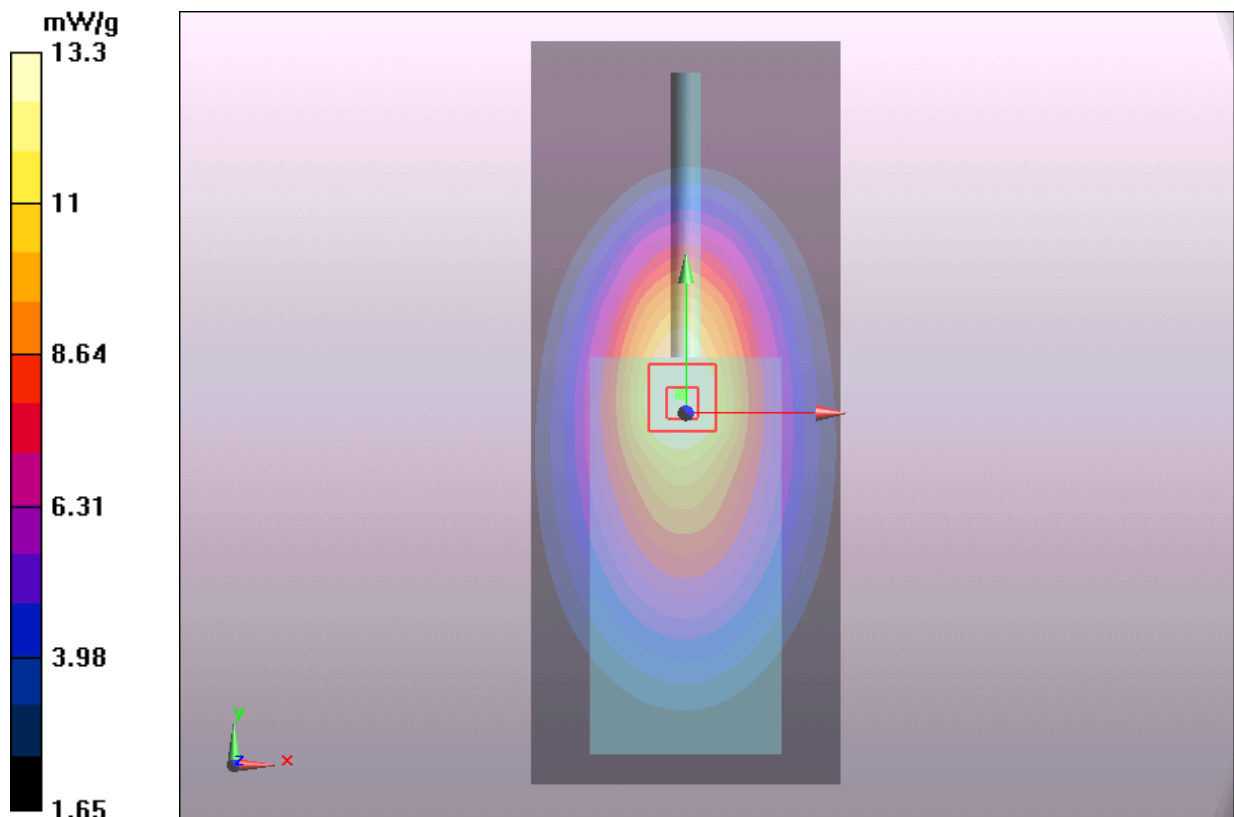


Figure 23 Body-Worn with Thinner Battery, Belt, Accessory 1 and Earphone 2, Front towards Ground 485.5MHz (12.5 KHz Channel Spacing)

TA Technology (Shanghai) Co., Ltd.
Test Report

Report No. RZA1203-0318SAR01R1

Page 52 of 110

Body-Worn with Thinner Battery, Belt and Audio Accessory 2, Front towards Ground 485.5MHz (12.5 KHz Channel Spacing)

Date/Time: 3/20/2012 6:13:27 PM

Communication System: PTT 450; Frequency: 485.5 MHz; Duty Cycle: 1:1

Medium parameters used: $f = 486 \text{ MHz}$; $\sigma = 0.959 \text{ mho/m}$; $\epsilon_r = 57$; $\rho = 1000 \text{ kg/m}^3$

Ambient Temperature: 22.3°C Liquid Temperature: 21.5°C

Phantom section: Flat Section

DASY5 Configuration:

Probe: EX3DV4 - SN3816; ConvF(10.83, 10.83, 10.83) Calibrated: 10/3/2011

Electronics: DAE4 Sn871; Calibrated: 11/22/2011

Phantom: ELI 4.0; Type: QDOVA001BA

Measurement SW: DASY5, V5.2 Build 162; SEMCAD X Version 14.0 Build 59

Towards Ground 485.5MHz/Area Scan (51x121x1): Measurement grid: $dx=15\text{mm}$, $dy=15\text{mm}$
Maximum value of SAR (interpolated) = 13.9 mW/g

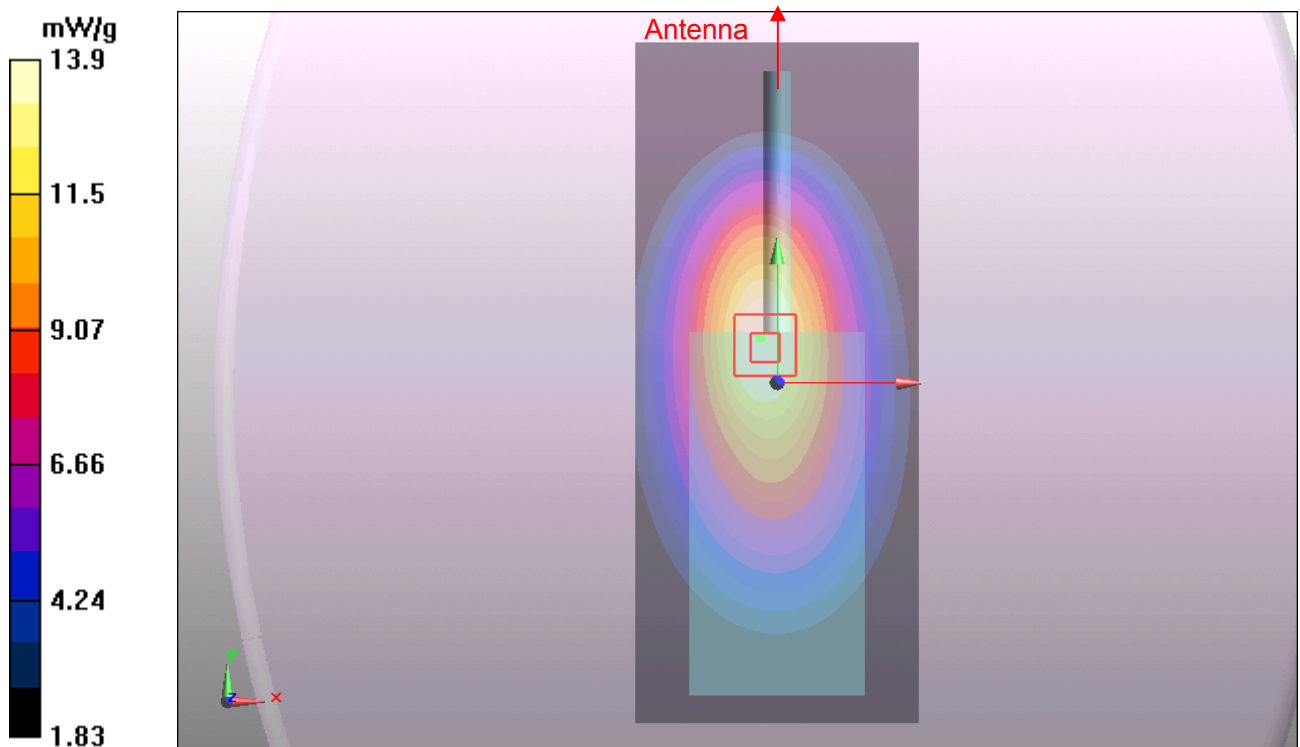
Towards Ground 485.5MHz/Zoom Scan (7x7x7)/Cube 0: Measurement grid: $dx=5\text{mm}$, $dy=5\text{mm}$, $dz=5\text{mm}$

Reference Value = 119.3 V/m ; Power Drift = -0.017 dB

Peak SAR (extrapolated) = 18 W/kg

SAR(1 g) = 13.3 mW/g ; SAR(10 g) = 9.64 mW/g

Maximum value of SAR (measured) = 13.9 mW/g



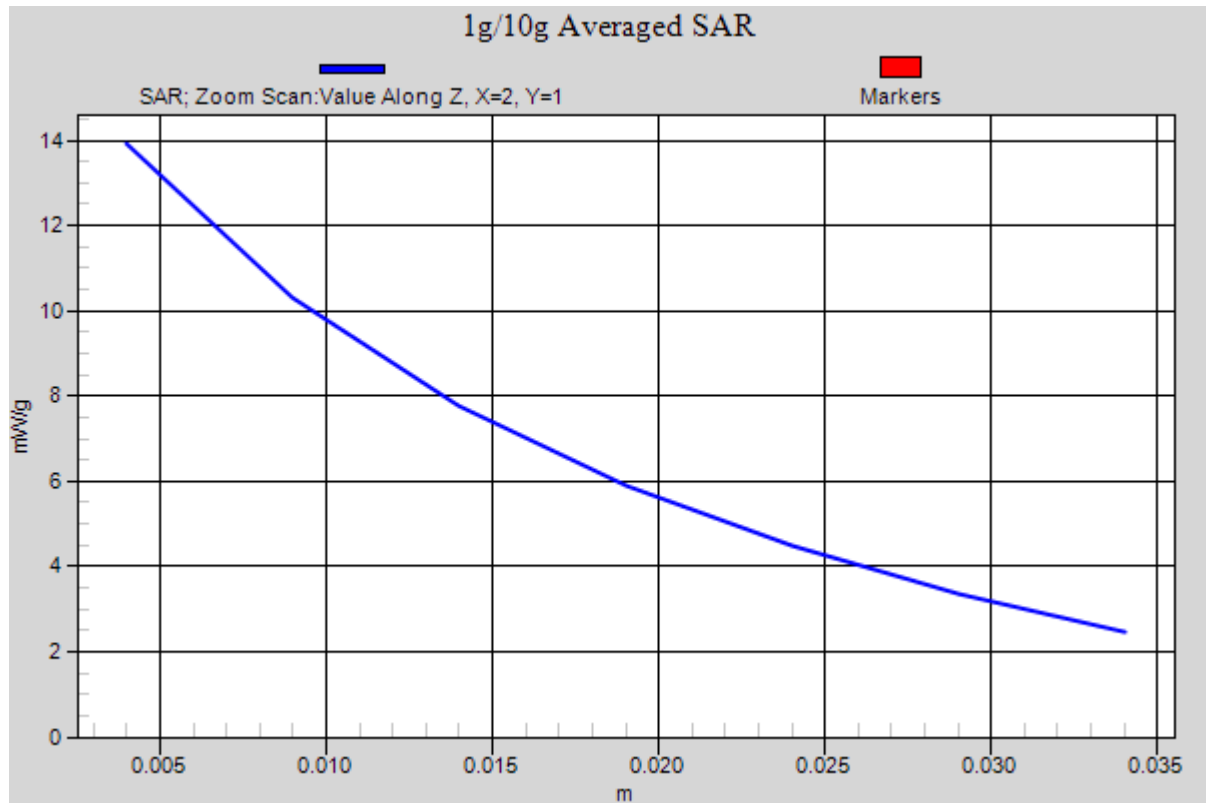


Figure 24 Body-Worn for 12.5 KHz with Thinner Battery, Belt and Audio Accessory 2, Front towards Ground 485.5MHz (12.5 KHz Channel Spacing)

TA Technology (Shanghai) Co., Ltd.
Test Report

Report No. RZA1203-0318SAR01R1

Page 54 of 110

Body-Worn with Thinner Battery, Belt and Audio Accessory 3, Front towards Ground 485.5MHz (12.5 KHz Channel Spacing)

Date/Time: 3/20/2012 6:36:29 PM

Communication System: PTT 450; Frequency: 485.5 MHz; Duty Cycle: 1:1

Medium parameters used: $f = 486 \text{ MHz}$; $\sigma = 0.959 \text{ mho/m}$; $\epsilon_r = 57$; $\rho = 1000 \text{ kg/m}^3$

Ambient Temperature: 22.3°C Liquid Temperature: 21.5°C

Phantom section: Flat Section

DASY5 Configuration:

Probe: EX3DV4 - SN3816; ConvF(10.83, 10.83, 10.83) Calibrated: 10/3/2011

Electronics: DAE4 Sn871; Calibrated: 11/22/2011

Phantom: ELI 4.0; Type: QDOVA001BA

Measurement SW: DASY5, V5.2 Build 162; SEMCAD X Version 14.0 Build 59

Towards Ground 485.5MHz/Area Scan (51x121x1): Measurement grid: $dx=15\text{mm}$, $dy=15\text{mm}$
Maximum value of SAR (interpolated) = 12.5 mW/g

Towards Ground 485.5MHz/Zoom Scan (7x7x7)/Cube 0: Measurement grid: $dx=5\text{mm}$, $dy=5\text{mm}$, $dz=5\text{mm}$

Reference Value = 112.5 V/m ; Power Drift = -0.155 dB

Peak SAR (extrapolated) = 16.1 W/kg

SAR(1 g) = 11.9 mW/g ; SAR(10 g) = 8.62 mW/g

Maximum value of SAR (measured) = 12.6 mW/g

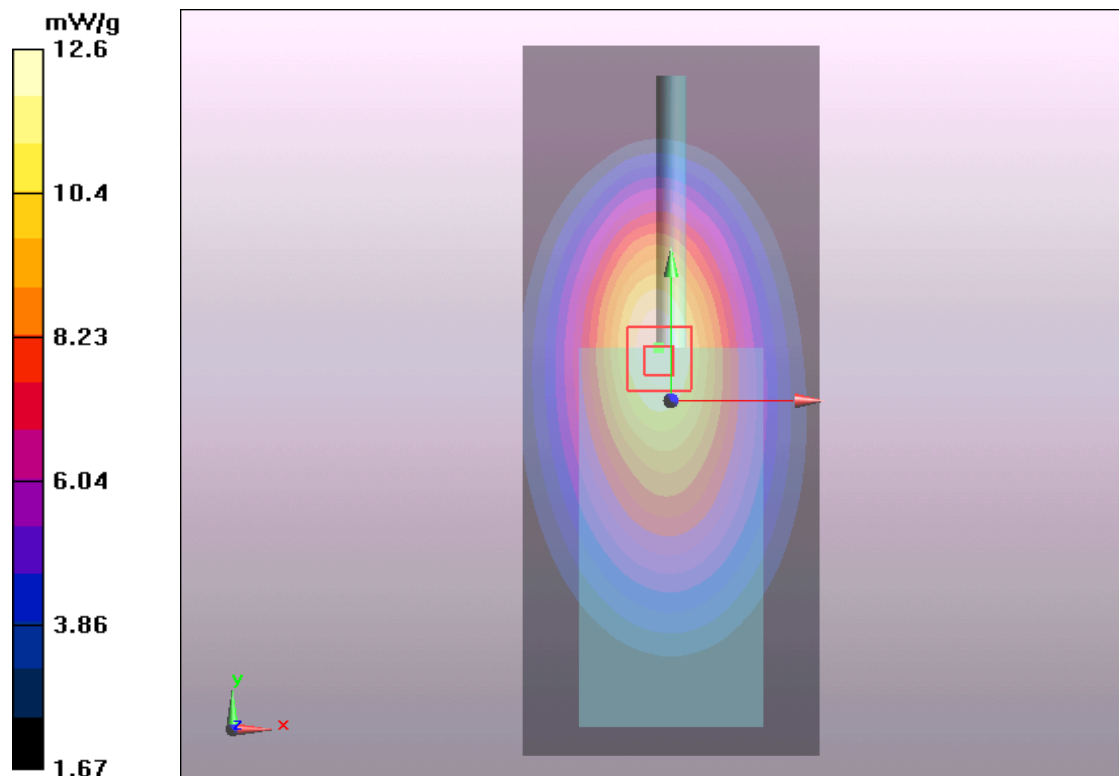


Figure 25 Body-Worn with Thinner Battery, Belt and Audio Accessory 3, Front towards Ground 485.5MHz (12.5 KHz Channel Spacing)

TA Technology (Shanghai) Co., Ltd.
Test Report

Report No. RZA1203-0318SAR01R1

Page 55 of 110

Body-Worn with Thinner Battery, Belt and Audio Accessory 4, Front towards Ground 485.5MHz (12.5 KHz Channel Spacing)

Date/Time: 3/20/2012 7:26:39 PM

Communication System: PTT 450; Frequency: 485.5 MHz; Duty Cycle: 1:1

Medium parameters used: $f = 486 \text{ MHz}$; $\sigma = 0.959 \text{ mho/m}$; $\epsilon_r = 57$; $\rho = 1000 \text{ kg/m}^3$

Ambient Temperature: 22.3°C Liquid Temperature: 21.5°C

Phantom section: Flat Section

DASY5 Configuration:

Probe: EX3DV4 - SN3816; ConvF(10.83, 10.83, 10.83) Calibrated: 10/3/2011

Electronics: DAE4 Sn871; Calibrated: 11/22/2011

Phantom: ELI 4.0; Type: QDOVA001BA

Measurement SW: DASY5, V5.2 Build 162; SEMCAD X Version 14.0 Build 59

Towards Ground 485.5MHz/Area Scan (51x121x1): Measurement grid: $dx=15\text{mm}$, $dy=15\text{mm}$
Maximum value of SAR (interpolated) = 12.7 mW/g

Towards Ground 485.5MHz/Zoom Scan (7x7x7)/Cube 0: Measurement grid: $dx=5\text{mm}$, $dy=5\text{mm}$, $dz=5\text{mm}$

Reference Value = 113.8 V/m ; Power Drift = -0.018 dB

Peak SAR (extrapolated) = 16.4 W/kg

SAR(1 g) = 12.1 mW/g ; SAR(10 g) = 8.72 mW/g

Maximum value of SAR (measured) = 12.8 mW/g

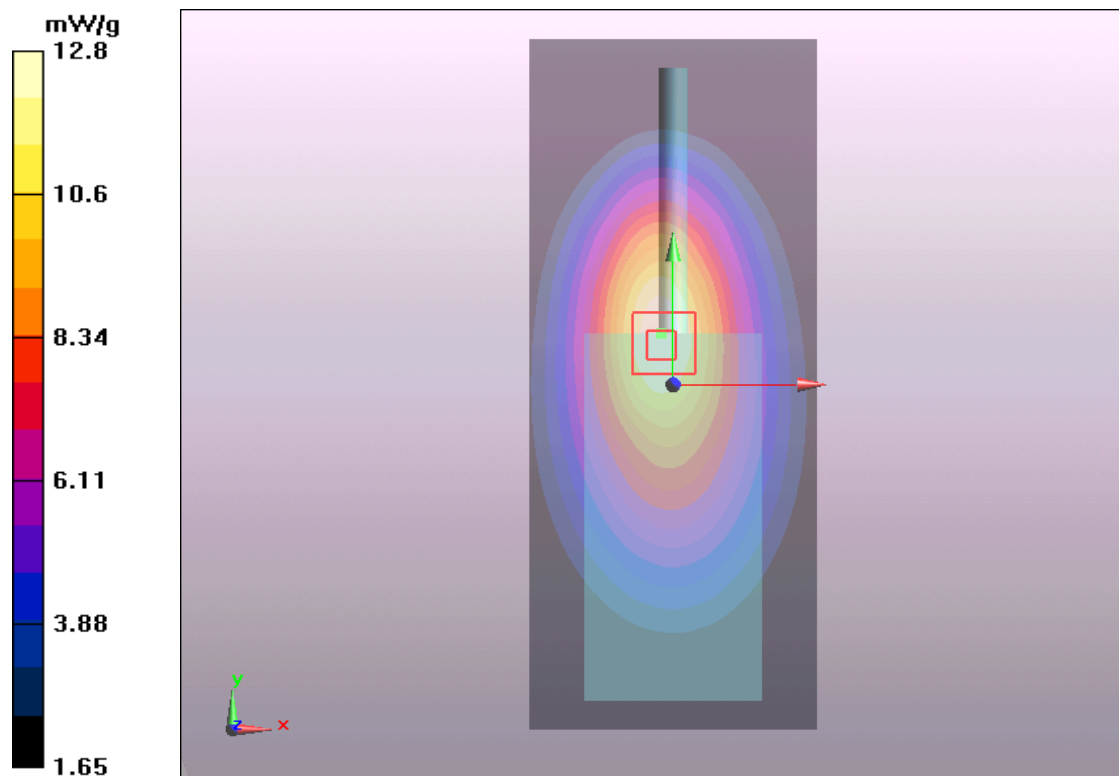


Figure 26 Body-Worn with Thinner Battery, Belt and Audio Accessory 4, Front towards Ground 485.5MHz (12.5 KHz Channel Spacing)

TA Technology (Shanghai) Co., Ltd.
Test Report

Report No. RZA1203-0318SAR01R1

Page 56 of 110

Body-Worn with Thinner Battery, Belt and Audio Accessory 5, Front towards Ground 485.5MHz (12.5 KHz Channel Spacing)

Date/Time: 3/20/2012 7:49:42 PM

Communication System: PTT 450; Frequency: 485.5 MHz; Duty Cycle: 1:1

Medium parameters used: $f = 486 \text{ MHz}$; $\sigma = 0.959 \text{ mho/m}$; $\epsilon_r = 57$; $\rho = 1000 \text{ kg/m}^3$

Ambient Temperature: 22.3°C Liquid Temperature: 21.5°C

Phantom section: Flat Section

DASY5 Configuration:

Probe: EX3DV4 - SN3816; ConvF(10.83, 10.83, 10.83) Calibrated: 10/3/2011

Electronics: DAE4 Sn871; Calibrated: 11/22/2011

Phantom: ELI 4.0; Type: QDOVA001BA

Measurement SW: DASY5, V5.2 Build 162; SEMCAD X Version 14.0 Build 59

Towards Ground 485.5MHz/Area Scan (51x121x1): Measurement grid: $dx=15\text{mm}$, $dy=15\text{mm}$
Maximum value of SAR (interpolated) = 12 mW/g

Towards Ground 485.5MHz/Zoom Scan (7x7x7)/Cube 0: Measurement grid: $dx=5\text{mm}$, $dy=5\text{mm}$, $dz=5\text{mm}$

Reference Value = 110.2 V/m ; Power Drift = -0.174 dB

Peak SAR (extrapolated) = 15.4 W/kg

SAR(1 g) = 11.4 mW/g ; SAR(10 g) = 8.2 mW/g

Maximum value of SAR (measured) = 12 mW/g

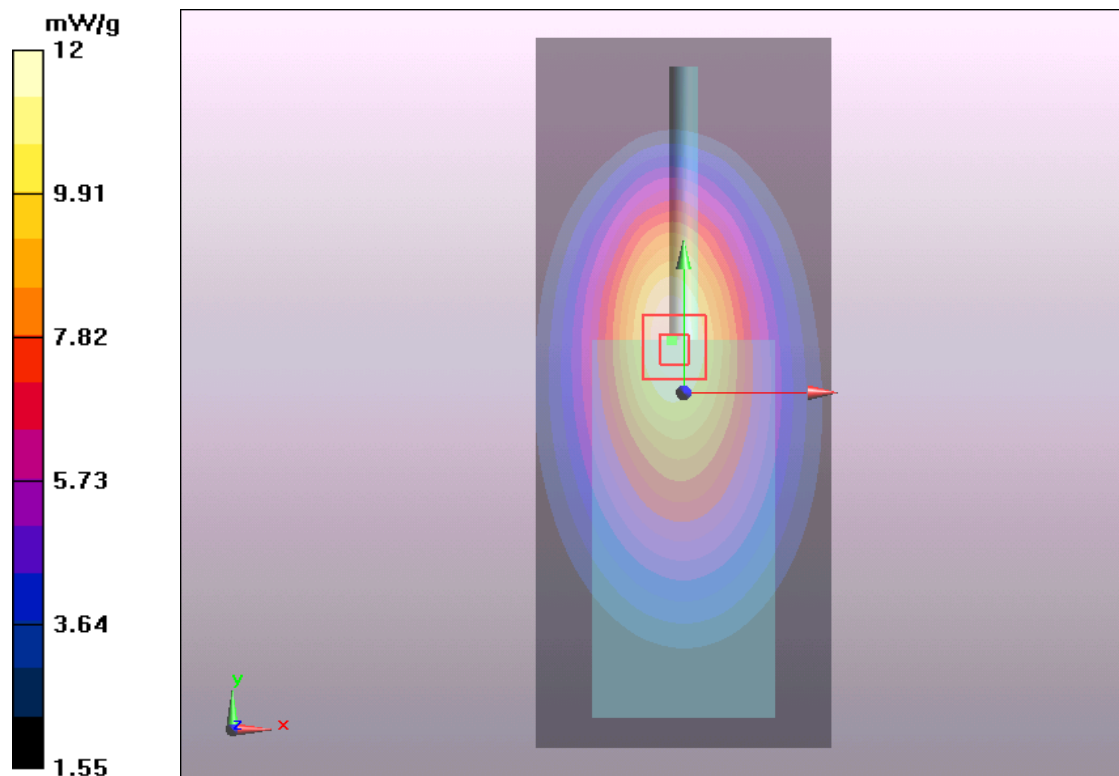


Figure 27 Body-Worn with Thinner Battery, Belt and Audio Accessory 5, Front towards Ground 485.5MHz (12.5 KHz Channel Spacing)

TA Technology (Shanghai) Co., Ltd.

Test Report

Report No. RZA1203-0318SAR01R1

Page 57 of 110

Body-Worn with Thinner Battery, Pocket and Accessory 1, Front towards Ground 485.5MHz (12.5 KHz Channel Spacing)

Date/Time: 3/20/2012 8:44:22 PM

Communication System: PTT 450; Frequency: 485.5 MHz; Duty Cycle: 1:1

Medium parameters used: $f = 486 \text{ MHz}$; $\sigma = 0.959 \text{ mho/m}$; $\epsilon_r = 57$; $\rho = 1000 \text{ kg/m}^3$

Ambient Temperature: 22.3°C Liquid Temperature: 21.5°C

Phantom section: Flat Section

DASY5 Configuration:

Probe: EX3DV4 - SN3816; ConvF(10.83, 10.83, 10.83) Calibrated: 10/3/2011

Electronics: DAE4 Sn871; Calibrated: 11/22/2011

Phantom: ELI 4.0; Type: QDOVA001BA

Measurement SW: DASY5, V5.2 Build 162; SEMCAD X Version 14.0 Build 59

Towards Ground 485.5MHz/Area Scan (51x121x1): Measurement grid: $dx=15\text{mm}$, $dy=15\text{mm}$

Maximum value of SAR (interpolated) = 12.9 mW/g

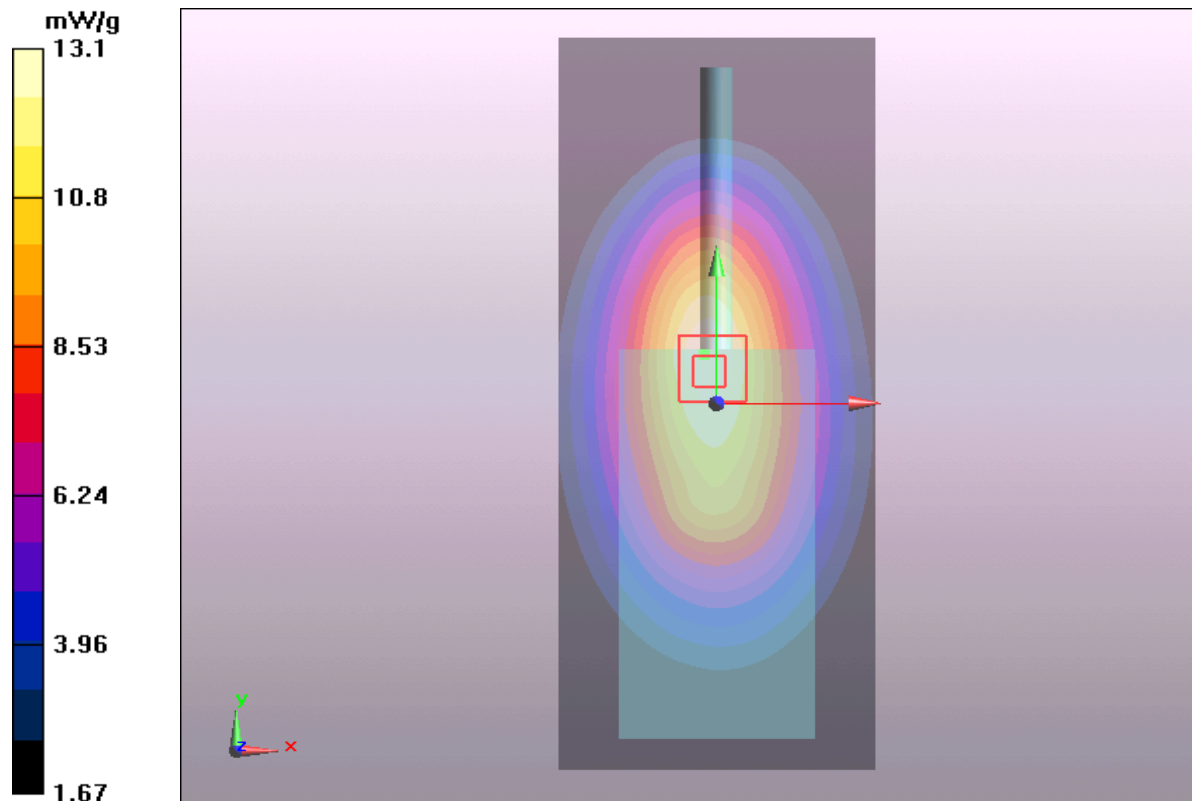
Towards Ground 485.5MHz/Zoom Scan (7x7x7)/Cube 0: Measurement grid: $dx=5\text{mm}$, $dy=5\text{mm}$, $dz=5\text{mm}$

Reference Value = 119.2 V/m ; Power Drift = -0.002 dB

Peak SAR (extrapolated) = 17 W/kg

SAR(1 g) = 12.5 mW/g ; SAR(10 g) = 9.02 mW/g

Maximum value of SAR (measured) = 13.1 mW/g



**Figure 28 Body-Worn with Thinner Battery, Pocket and Accessory 1, Front towards Ground
485.5MHz (12.5 KHz Channel Spacing)**

TA Technology (Shanghai) Co., Ltd.
Test Report

Report No. RZA1203-0318SAR01R1

Page 58 of 110

Body-Worn with Thinner Battery, Pocket, Leather and Accessory 1, Front towards Ground 485.5MHz (12.5 KHz Channel Spacing)

Date/Time: 3/21/2012 1:55:47 AM

Communication System: PTT 450; Frequency: 485.5 MHz; Duty Cycle: 1:1

Medium parameters used: $f = 486 \text{ MHz}$; $\sigma = 0.959 \text{ mho/m}$; $\epsilon_r = 57$; $\rho = 1000 \text{ kg/m}^3$

Ambient Temperature: 22.3°C Liquid Temperature: 21.5°C

Phantom section: Flat Section

DASY5 Configuration:

Probe: EX3DV4 - SN3816; ConvF(10.83, 10.83, 10.83) Calibrated: 10/3/2011

Electronics: DAE4 Sn871; Calibrated: 11/22/2011

Phantom: ELI 4.0; Type: QDOVA001BA

Measurement SW: DASY5, V5.2 Build 162; SEMCAD X Version 14.0 Build 59

Towards Ground 485.5MHz/Area Scan (51x121x1): Measurement grid: $dx=15\text{mm}$, $dy=15\text{mm}$

Maximum value of SAR (interpolated) = 6.95 mW/g

Towards Ground 485.5MHz/Zoom Scan (7x7x7)/Cube 0: Measurement grid: $dx=5\text{mm}$, $dy=5\text{mm}$, $dz=5\text{mm}$

Reference Value = 88.5 V/m ; Power Drift = -0.003 dB

Peak SAR (extrapolated) = 8.16 W/kg

SAR(1 g) = 6.49 mW/g ; SAR(10 g) = 4.93 mW/g

Maximum value of SAR (measured) = 6.8 mW/g

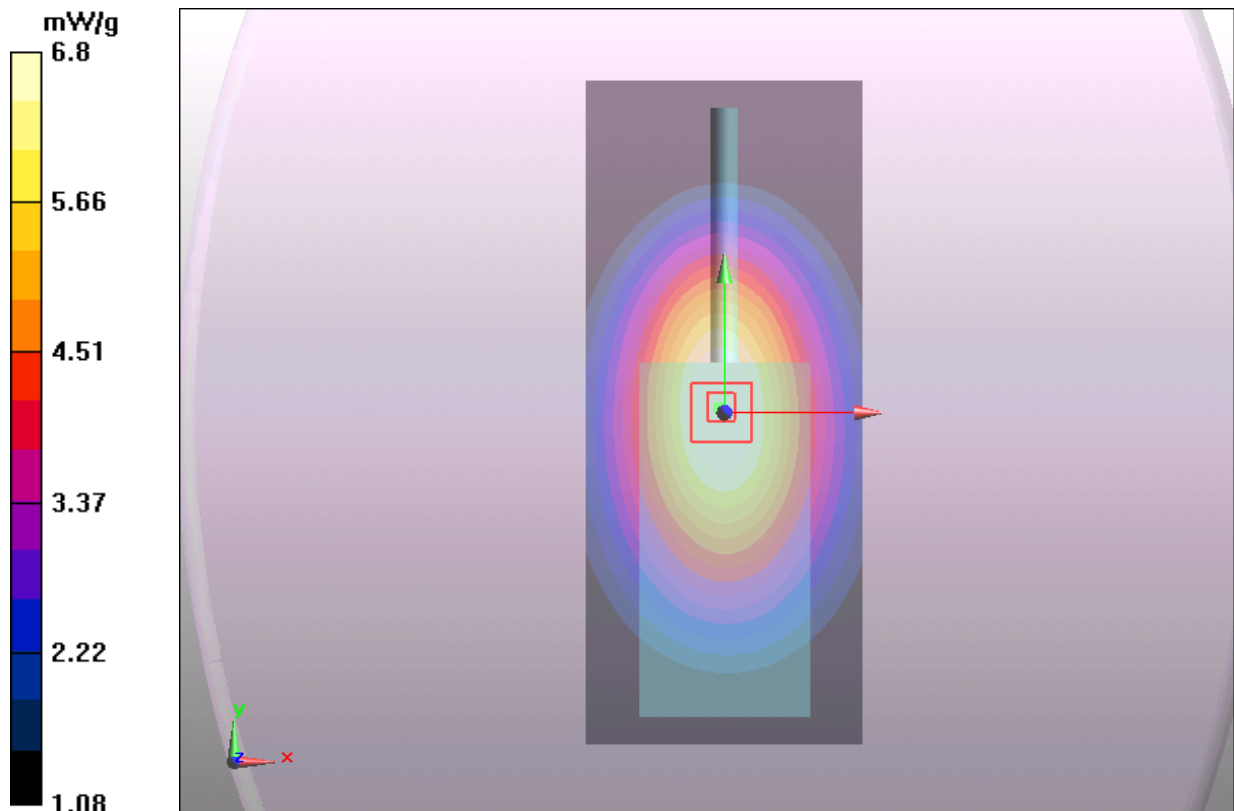


Figure 29 Body-Worn with Thinner Battery, Pocket, Leather and Accessory 1, Front towards Ground 485.5MHz (12.5 KHz Channel Spacing)

Body-Worn for Digital with Thinner Battery, Belt and Audio Accessory 2, Front towards Ground 485.5MHz

Date/Time: 3/20/2012 8:17:12 PM

Communication System: PTT Digital 450; Frequency: 485.5 MHz; Duty Cycle: 1:1.99986

Medium parameters used: $f = 486 \text{ MHz}$; $\sigma = 0.959 \text{ mho/m}$; $\epsilon_r = 57$; $\rho = 1000 \text{ kg/m}^3$

Ambient Temperature: 22.3°C Liquid Temperature: 21.5°C

Phantom section: Flat Section

DASY5 Configuration:

Probe: EX3DV4 - SN3816; ConvF(10.83, 10.83, 10.83) Calibrated: 10/3/2011

Electronics: DAE4 Sn871; Calibrated: 11/22/2011

Phantom: ELI 4.0; Type: QDOVA001BA

Measurement SW: DASY5, V5.2 Build 162; SEMCAD X Version 14.0 Build 59

Towards Ground 485.5MHz/Area Scan (51x121x1): Measurement grid: $dx=15\text{mm}$, $dy=15\text{mm}$
Maximum value of SAR (interpolated) = 6.36 mW/g

Towards Ground 485.5MHz/Zoom Scan (7x7x7)/Cube 0: Measurement grid: $dx=5\text{mm}$, $dy=5\text{mm}$, $dz=5\text{mm}$

Reference Value = 82 V/m ; Power Drift = -0.057 dB

Peak SAR (extrapolated) = 8.86 W/kg

SAR(1 g) = 6.24 mW/g ; SAR(10 g) = 4.49 mW/g

Maximum value of SAR (measured) = 6.68 mW/g

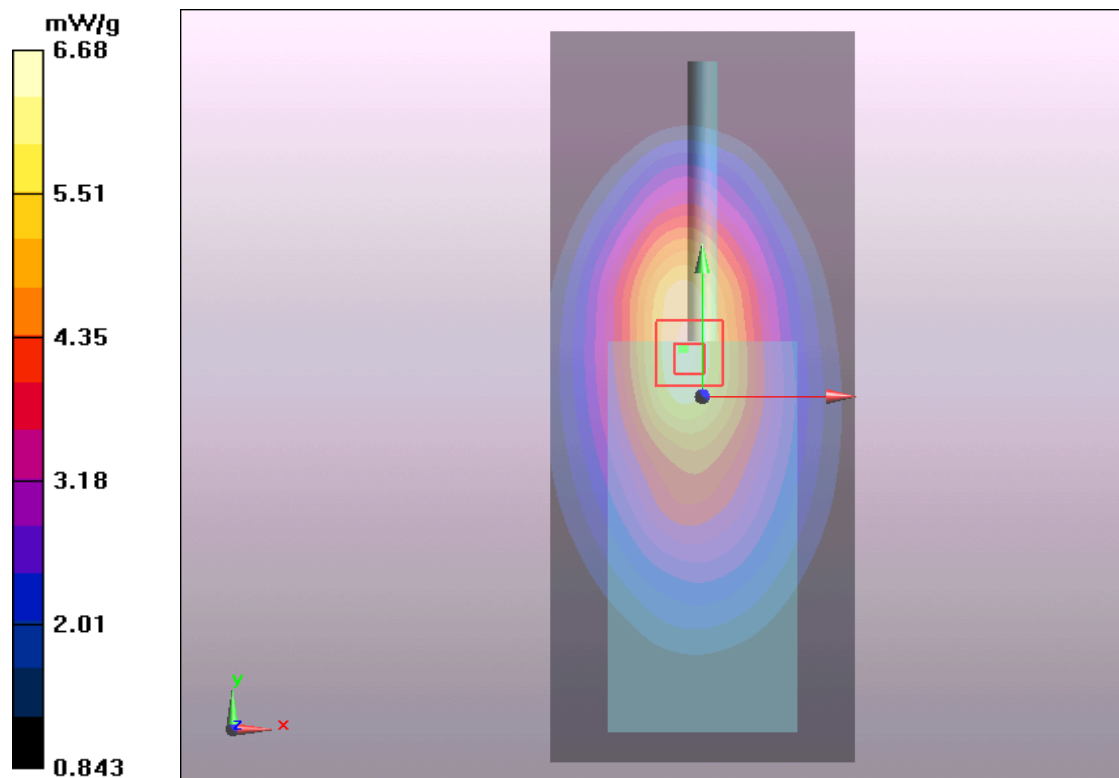


Figure 30 Body-Worn for Digital with Thinner Battery, Belt and Audio Accessory 2, Front towards Ground 485.5MHz

Body-Worn with Thicker Battery, Belt and Audio Accessory 2, Front towards Ground with Digital 468MHz (12.5 KHz Channel Spacing)

Date/Time: 6/1/2012 2:58:09 PM

Communication System: PTT 450; Frequency: 468 MHz; Duty Cycle: 1:1

Medium parameters used: $f = 468 \text{ MHz}$; $\sigma = 0.938 \text{ mho/m}$; $\epsilon_r = 57.2$; $\rho = 1000 \text{ kg/m}^3$

Ambient Temperature: 22.3°C Liquid Temperature: 21.5°C

Phantom section: Flat Section

DASY5 Configuration:

Probe: EX3DV4 - SN3816; ConvF(10.83, 10.83, 10.83) Calibrated: 10/3/2011

Electronics: DAE4 Sn871; Calibrated: 11/22/2011

Phantom: ELI 4.0; Type: QDOVA001BA

Measurement SW: DASY5, V5.2 Build 162; SEMCAD X Version 14.0 Build 59

Towards Ground 468MHz/Area Scan (51x121x1): Measurement grid: $dx=15\text{mm}$, $dy=15\text{mm}$
Maximum value of SAR (interpolated) = 12.8 mW/g

Towards Ground 468MHz/Zoom Scan (7x7x7)/Cube 0: Measurement grid: $dx=5\text{mm}$, $dy=5\text{mm}$, $dz=5\text{mm}$

Reference Value = 123.2 V/m ; Power Drift = -0.040 dB

Peak SAR (extrapolated) = 15.4 W/kg

SAR(1 g) = 11.7 mW/g ; SAR(10 g) = 8.42 mW/g

Maximum value of SAR (measured) = 12.4 mW/g

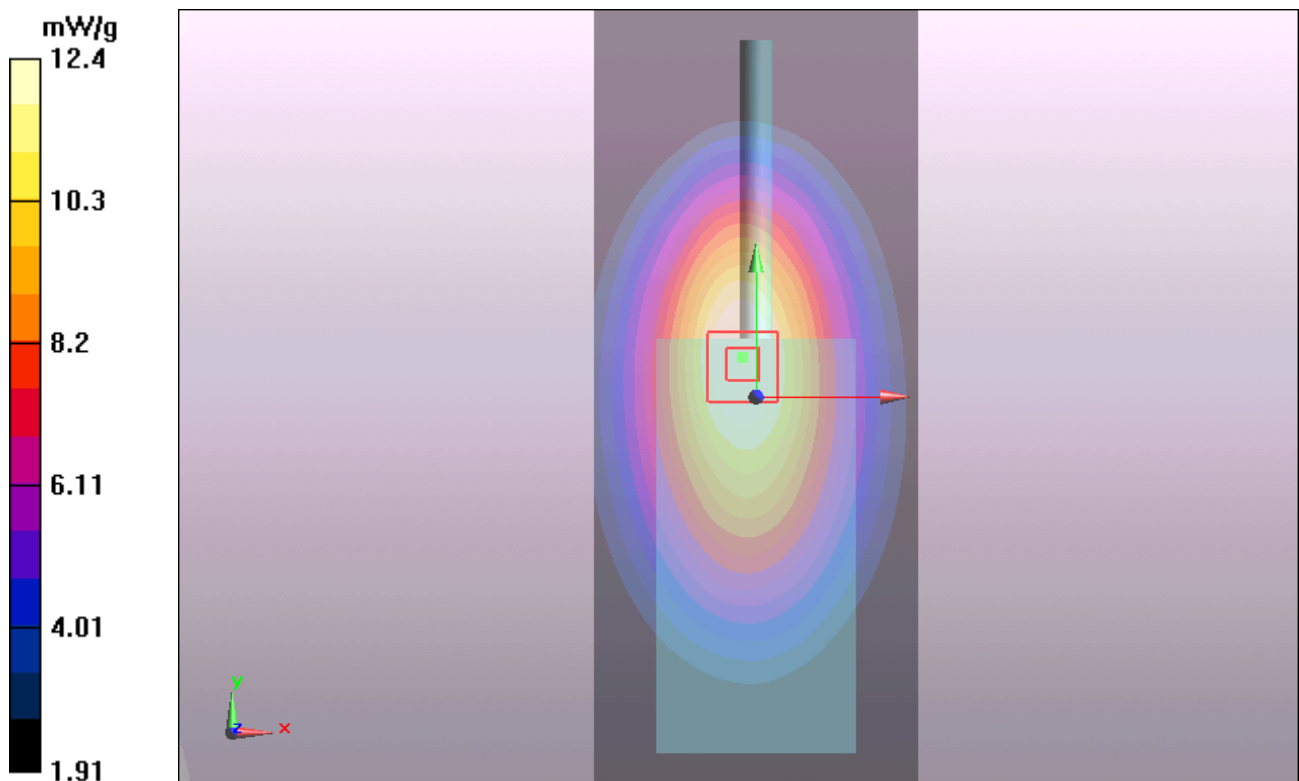


Figure 31 Body-Worn with Thicker Battery, Belt and Audio Accessory 2, Front towards Ground with Digital 468MHz (12.5 KHz Channel Spacing)

TA Technology (Shanghai) Co., Ltd.
Test Report

Report No. RZA1203-0318SAR01R1

Page 61 of 110

Body-Worn with Thicker Battery, Belt and Audio Accessory 2, Front towards Ground with Digital 485.5MHz (12.5 KHz Channel Spacing)

Date/Time: 3/20/2012 3:32:43 PM

Communication System: PTT 450; Frequency: 485.5 MHz; Duty Cycle: 1:1

Medium parameters used: $f = 486 \text{ MHz}$; $\sigma = 0.959 \text{ mho/m}$; $\epsilon_r = 57$; $\rho = 1000 \text{ kg/m}^3$

Ambient Temperature: 22.3°C Liquid Temperature: 21.5°C

Phantom section: Flat Section

DASY5 Configuration:

Probe: EX3DV4 - SN3816; ConvF(10.83, 10.83, 10.83) Calibrated: 10/3/2011

Electronics: DAE4 Sn871; Calibrated: 11/22/2011

Phantom: ELI 4.0; Type: QDOVA001BA

Measurement SW: DASY5, V5.2 Build 162; SEMCAD X Version 14.0 Build 59

Towards Ground 485.5MHz/Area Scan (51x121x1): Measurement grid: $dx=15\text{mm}$, $dy=15\text{mm}$
Maximum value of SAR (interpolated) = 13.7 mW/g

Towards Ground 485.5MHz/Zoom Scan (7x7x7)/Cube 0: Measurement grid: $dx=5\text{mm}$, $dy=5\text{mm}$, $dz=5\text{mm}$

Reference Value = 125.0 V/m ; Power Drift = -0.098 dB

Peak SAR (extrapolated) = 18.4 W/kg

SAR(1 g) = 13 mW/g ; SAR(10 g) = 9.03 mW/g

Maximum value of SAR (measured) = 13.6 mW/g

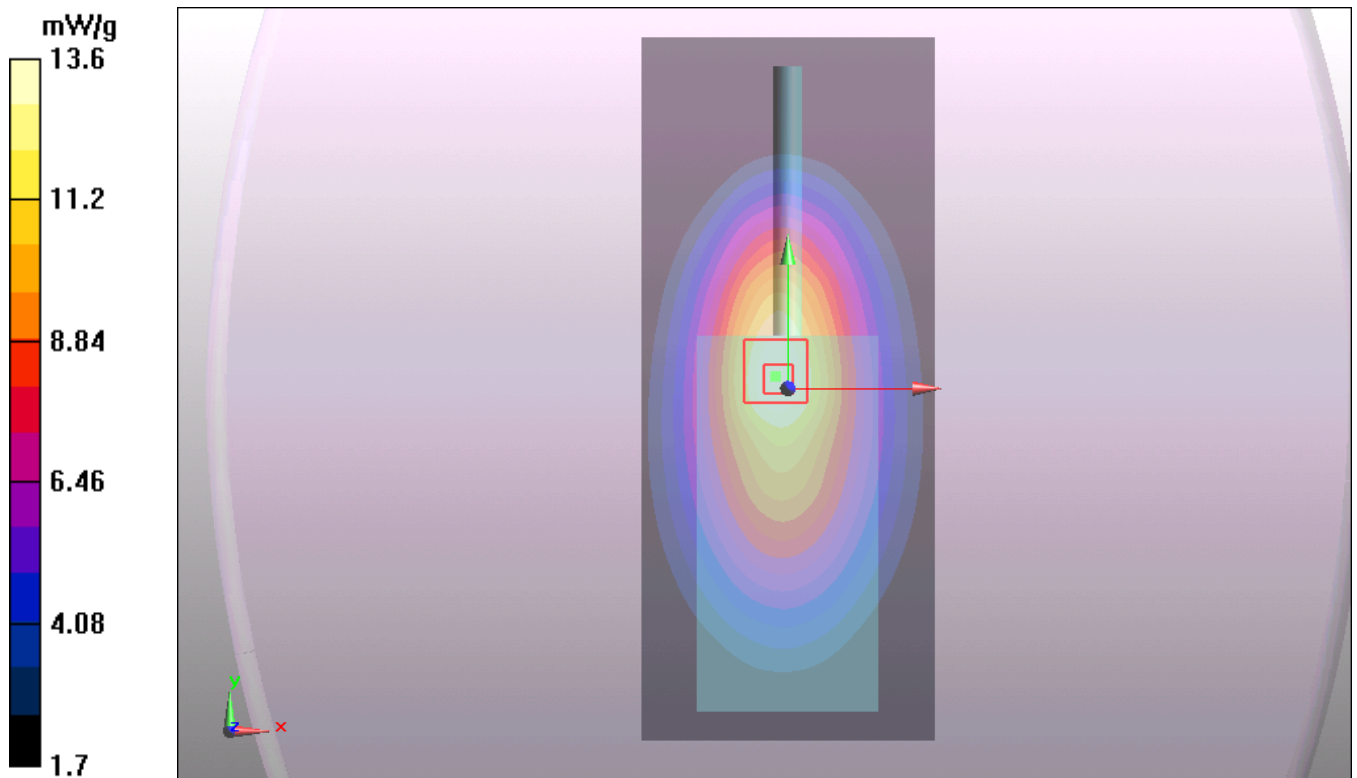


Figure 32 Body-Worn with Thicker Battery, Belt and Audio Accessory 2, Front towards Ground with Digital 485.5MHz (12.5 KHz Channel Spacing)

Body-Worn with Thicker Battery, Belt and Audio Accessory 2, Front towards Ground with Digital 503MHz (12.5 KHz Channel Spacing)

Date/Time: 6/1/2012 3:17:05 PM

Communication System: PTT 450; Frequency: 503 MHz; Duty Cycle: 1:1

Medium parameters used (interpolated): $f = 503 \text{ MHz}$; $\sigma = 0.982 \text{ mho/m}$; $\epsilon_r = 56.5$; $\rho = 1000 \text{ kg/m}^3$

Ambient Temperature: 22.3°C Liquid Temperature: 21.5°C

Phantom section: Flat Section

DASY5 Configuration:

Probe: EX3DV4 - SN3816; ConvF(10.83, 10.83, 10.83) Calibrated: 10/3/2011

Electronics: DAE4 Sn871; Calibrated: 11/22/2011

Phantom: ELI 4.0; Type: QDOVA001BA

Measurement SW: DASY5, V5.2 Build 162; SEMCAD X Version 14.0 Build 59

Towards Ground 503MHz/Area Scan (51x121x1): Measurement grid: $dx=15\text{mm}$, $dy=15\text{mm}$
Maximum value of SAR (interpolated) = 12.1 mW/g

Towards Ground 503MHz/Zoom Scan (7x7x7)/Cube 0: Measurement grid: $dx=5\text{mm}$, $dy=5\text{mm}$, $dz=5\text{mm}$

Reference Value = 118.6 V/m ; Power Drift = -0.074 dB

Peak SAR (extrapolated) = 14.5 W/kg

SAR(1 g) = 11.2 mW/g ; SAR(10 g) = 8.16 mW/g

Maximum value of SAR (measured) = 11.9 mW/g

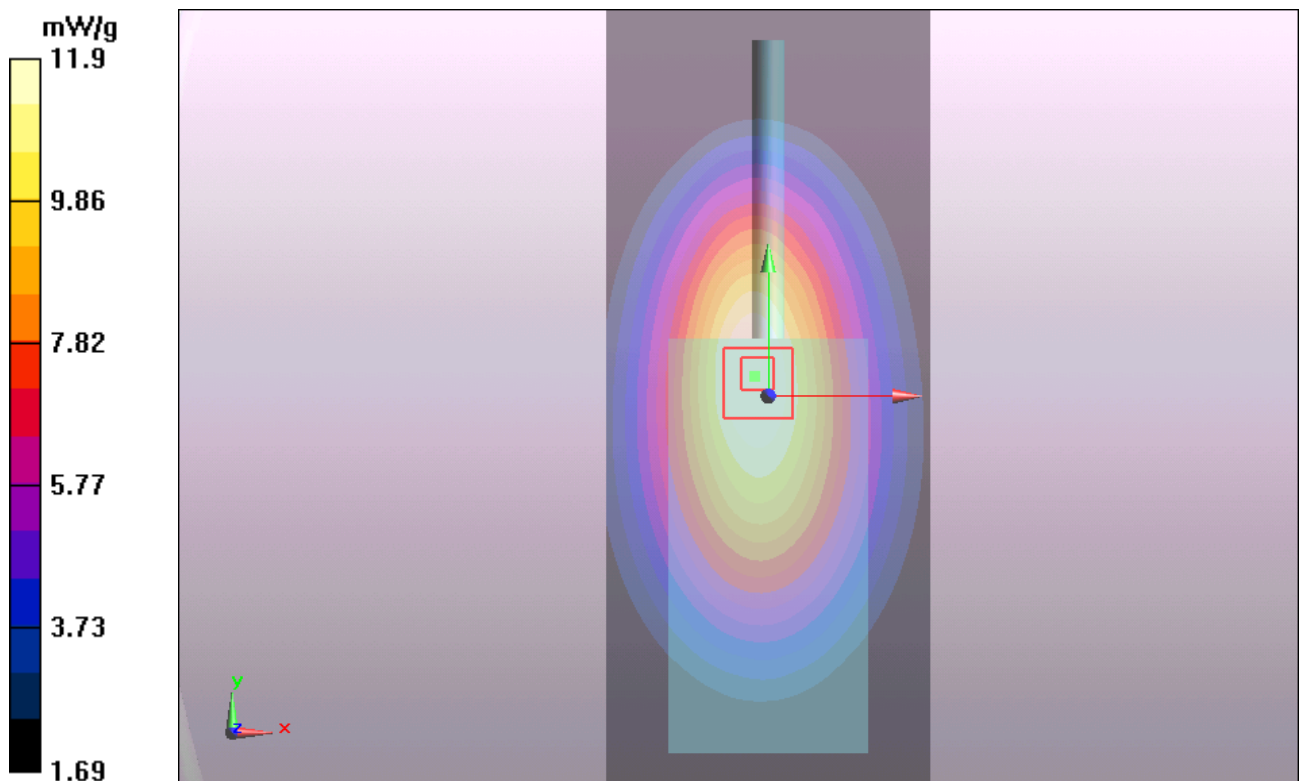


Figure 33 Body-Worn with Thicker Battery, Belt and Audio Accessory 2, Front towards Ground with Digital 503MHz (12.5 KHz Channel Spacing)

TA Technology (Shanghai) Co., Ltd.

Test Report

Report No. RZA1203-0318SAR01R1

Page 63 of 110

ANNEX D: Probe Calibration Certificate

Calibration Laboratory of
Schmid & Partner
Engineering AG
Zeughausstrasse 43, 8004 Zurich, Switzerland



S Schweizerischer Kalibrierdienst
C Service suisse d'étalonnage
S Servizio svizzero di taratura
S Swiss Calibration Service

Accredited by the Swiss Accreditation Service (SAS)
The Swiss Accreditation Service is one of the signatories to the EA
Multilateral Agreement for the recognition of calibration certificates

Accreditation No.: SCS 108

Client TMC Shanghai (Auden)

Certificate No: EX3-3816_Oct11

CALIBRATION CERTIFICATE

Object EX3DV4 - SN:3816

Calibration procedure(s) QA CAL-01.v8, QA CAL-12.v7, QA CAL-23.v4, QA CAL-25.v4
Calibration procedure for dosimetric E-field probes

Calibration date: October 3, 2011

This calibration certificate documents the traceability to national standards, which realize the physical units of measurements (SI).
The measurements and the uncertainties with confidence probability are given on the following pages and are part of the certificate.

All calibrations have been conducted in the closed laboratory facility: environment temperature (22 ± 3)°C and humidity < 70%.

Calibration Equipment used (M&TE critical for calibration)

Primary Standards	ID	Cal Date (Certificate No.)	Scheduled Calibration
Power meter E4419B	GB41293874	31-Mar-11 (No. 217-01372)	Apr-12
Power sensor E4412A	MY41498087	31-Mar-11 (No. 217-01372)	Apr-12
Reference 3 dB Attenuator	SN: S5054 (3c)	29-Mar-11 (No. 217-01369)	Apr-12
Reference 20 dB Attenuator	SN: S5086 (20b)	29-Mar-11 (No. 217-01367)	Apr-12
Reference 30 dB Attenuator	SN: S5129 (30b)	29-Mar-11 (No. 217-01370)	Apr-12
Reference Probe ES3DV2	SN: 3013	29-Dec-10 (No. ES3-3013_Dec10)	Dec-11
DAE4	SN: 654	3-May-11 (No. DAE4-654_May11)	May-12
Secondary Standards	ID	Check Date (in house)	Scheduled Check
RF generator HP 8648C	US3642U01700	4-Aug-99 (in house check Oct-09)	In house check: Oct-11
Network Analyzer HP 8753E	US37390585	18-Oct-01 (in house check Oct-10)	In house check: Oct-11

	Name	Function	Signature
Calibrated by:	Jeton Kastrati	Laboratory Technician	
Approved by:	Katja Pokovic	Technical Manager	
This calibration certificate shall not be reproduced except in full without written approval of the laboratory.			
Issued: October 3, 2011			

Certificate No: EX3-3816_Oct11

Page 1 of 11

TA Technology (Shanghai) Co., Ltd.

Test Report

Report No. RZA1203-0318SAR01R1

Page 64 of 110

Calibration Laboratory of
Schmid & Partner
Engineering AG
Zeughausstrasse 43, 8004 Zurich, Switzerland



S Schweizerischer Kalibrierdienst
C Service suisse d'étalonnage
S Servizio svizzero di taratura
S Swiss Calibration Service

Accredited by the Swiss Accreditation Service (SAS)

Accreditation No.: **SCS 108**

The Swiss Accreditation Service is one of the signatories to the EA
Multilateral Agreement for the recognition of calibration certificates

Glossary:

TSL	tissue simulating liquid
NORM _{x,y,z}	sensitivity in free space
ConvF	sensitivity in TSL / NORM _{x,y,z}
DCP	diode compression point
CF	crest factor (1/duty_cycle) of the RF signal
A, B, C	modulation dependent linearization parameters
Polarization φ	φ rotation around probe axis
Polarization ϑ	ϑ rotation around an axis that is in the plane normal to probe axis (at measurement center), i.e., $\vartheta = 0$ is normal to probe axis

Calibration is Performed According to the Following Standards:

- IEEE Std 1528-2003, "IEEE Recommended Practice for Determining the Peak Spatial-Averaged Specific Absorption Rate (SAR) in the Human Head from Wireless Communications Devices: Measurement Techniques", December 2003
- IEC 62209-1, "Procedure to measure the Specific Absorption Rate (SAR) for hand-held devices used in close proximity to the ear (frequency range of 300 MHz to 3 GHz)", February 2005

Methods Applied and Interpretation of Parameters:

- NORM_{x,y,z}**: Assessed for E-field polarization $\vartheta = 0$ ($f \leq 900$ MHz in TEM-cell; $f > 1800$ MHz: R22 waveguide). NORM_{x,y,z} are only intermediate values, i.e., the uncertainties of NORM_{x,y,z} does not affect the E²-field uncertainty inside TSL (see below ConvF).
- NORM(f)_{x,y,z}** = NORM_{x,y,z} * frequency_response (see Frequency Response Chart). This linearization is implemented in DASY4 software versions later than 4.2. The uncertainty of the frequency response is included in the stated uncertainty of ConvF.
- DCP_{x,y,z}**: DCP are numerical linearization parameters assessed based on the data of power sweep with CW signal (no uncertainty required). DCP does not depend on frequency nor media.
- PAR**: PAR is the Peak to Average Ratio that is not calibrated but determined based on the signal characteristics
- A_{x,y,z}; B_{x,y,z}; C_{x,y,z}; VR_{x,y,z}**: A, B, C are numerical linearization parameters assessed based on the data of power sweep for specific modulation signal. The parameters do not depend on frequency nor media. VR is the maximum calibration range expressed in RMS voltage across the diode.
- ConvF and Boundary Effect Parameters**: Assessed in flat phantom using E-field (or Temperature Transfer Standard for $f \leq 800$ MHz) and inside waveguide using analytical field distributions based on power measurements for $f > 800$ MHz. The same setups are used for assessment of the parameters applied for boundary compensation (alpha, depth) of which typical uncertainty values are given. These parameters are used in DASY4 software to improve probe accuracy close to the boundary. The sensitivity in TSL corresponds to NORM_{x,y,z} * ConvF whereby the uncertainty corresponds to that given for ConvF. A frequency dependent ConvF is used in DASY version 4.4 and higher which allows extending the validity from ± 50 MHz to ± 100 MHz.
- Spherical isotropy (3D deviation from isotropy)**: In a field of low gradients realized using a flat phantom exposed by a patch antenna.
- Sensor Offset**: The sensor offset corresponds to the offset of virtual measurement center from the probe tip (on probe axis). No tolerance required.

EX3DV4 – SN:3816

October 3, 2011

Probe EX3DV4

SN:3816

Manufactured: September 2, 2011
Calibrated: October 3, 2011

Calibrated for DASY/EASY Systems
(Note: non-compatible with DASY2 system!)

TA Technology (Shanghai) Co., Ltd.
Test Report

Report No. RZA1203-0318SAR01R1

Page 66 of 110

EX3DV4- SN:3816

October 3, 2011

DASY/EASY - Parameters of Probe: EX3DV4 - SN:3816

Basic Calibration Parameters

	Sensor X	Sensor Y	Sensor Z	Unc (k=2)
Norm ($\mu\text{V}/(\text{V}/\text{m})^2$) ^A	0.48	0.56	0.61	$\pm 10.1 \%$
DCP (mV) ^B	99.8	102.2	102.1	

Modulation Calibration Parameters

UID	Communication System Name	PAR		A dB	B dB	C dB	VR mV	Unc ^E (k=2)
10000	CW	0.00	X	0.00	0.00	1.00	111.3	$\pm 2.7 \%$
			Y	0.00	0.00	1.00	127.3	
			Z	0.00	0.00	1.00	127.7	

The reported uncertainty of measurement is stated as the standard uncertainty of measurement multiplied by the coverage factor $k=2$, which for a normal distribution corresponds to a coverage probability of approximately 95%.

^A The uncertainties of NormX,Y,Z do not affect the E²-field uncertainty inside TSL (see Pages 5 and 6).

^B Numerical linearization parameter: uncertainty not required.

^E Uncertainty is determined using the max. deviation from linear response applying rectangular distribution and is expressed for the square of the field value.

TA Technology (Shanghai) Co., Ltd.

Test Report

Report No. RZA1203-0318SAR01R1

Page 67 of 110

EX3DV4- SN:3816

October 3, 2011

DASY/EASY - Parameters of Probe: EX3DV4 - SN:3816

Calibration Parameter Determined in Head Tissue Simulating Media

f (MHz) ^c	Relative Permittivity ^f	Conductivity (S/m) ^f	ConvF X	ConvF Y	ConvF Z	Alpha	Depth (mm)	Unct. (k=2)
450	43.5	0.87	9.97	9.97	9.97	0.11	1.00	± 13.4 %
750	41.9	0.89	9.47	9.47	9.47	0.62	0.78	± 12.0 %
835	41.5	0.90	9.22	9.22	9.22	0.76	0.66	± 12.0 %
1450	40.5	1.20	8.58	8.58	8.58	0.65	0.77	± 12.0 %
1750	40.1	1.37	8.23	8.23	8.23	0.80	0.58	± 12.0 %
1900	40.0	1.40	7.90	7.90	7.90	0.80	0.57	± 12.0 %
2450	39.2	1.80	7.17	7.17	7.17	0.66	0.64	± 12.0 %
2600	39.0	1.96	7.06	7.06	7.06	0.64	0.67	± 12.0 %

^c Frequency validity of ± 100 MHz only applies for DASY v4.4 and higher (see Page 2), else it is restricted to ± 50 MHz. The uncertainty is the RSS of the ConvF uncertainty at calibration frequency and the uncertainty for the indicated frequency band.

^f At frequencies below 3 GHz, the validity of tissue parameters (ϵ and σ) can be relaxed to ± 10% if liquid compensation formula is applied to measured SAR values. At frequencies above 3 GHz, the validity of tissue parameters (ϵ and σ) is restricted to ± 5%. The uncertainty is the RSS of the ConvF uncertainty for indicated target tissue parameters.

TA Technology (Shanghai) Co., Ltd.
Test Report

Report No. RZA1203-0318SAR01R1

Page 68 of 110

EX3DV4- SN:3816

October 3, 2011

DASY/EASY - Parameters of Probe: EX3DV4 - SN:3816

Calibration Parameter Determined in Body Tissue Simulating Media

f (MHz) ^c	Relative Permittivity ^f	Conductivity (S/m) ^f	ConvF X	ConvF Y	ConvF Z	Alpha	Depth (mm)	Unct. (k=2)
450	56.7	0.94	10.83	10.83	10.83	0.02	1.00	± 13.4 %
750	55.5	0.96	9.50	9.50	9.50	0.80	0.70	± 12.0 %
835	55.2	0.97	9.38	9.38	9.38	0.68	0.69	± 12.0 %
1750	53.4	1.49	7.80	7.80	7.80	0.80	0.65	± 12.0 %
1900	53.3	1.52	7.51	7.51	7.51	0.80	0.65	± 12.0 %
2450	52.7	1.95	7.19	7.19	7.19	0.80	0.60	± 12.0 %
2600	52.5	2.16	7.14	7.14	7.14	0.80	0.59	± 12.0 %

^c Frequency validity of ± 100 MHz only applies for DASY v4.4 and higher (see Page 2), else it is restricted to ± 50 MHz. The uncertainty is the RSS of the ConvF uncertainty at calibration frequency and the uncertainty for the indicated frequency band.

^f At frequencies below 3 GHz, the validity of tissue parameters (ϵ and σ) can be relaxed to ± 10% if liquid compensation formula is applied to measured SAR values. At frequencies above 3 GHz, the validity of tissue parameters (ϵ and σ) is restricted to ± 5%. The uncertainty is the RSS of the ConvF uncertainty for indicated target tissue parameters.

TA Technology (Shanghai) Co., Ltd.
Test Report

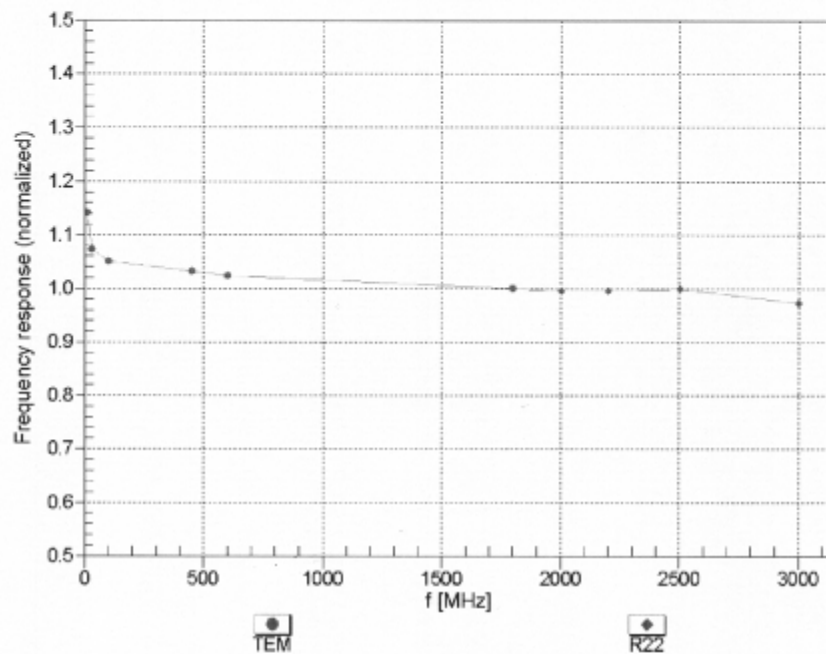
Report No. RZA1203-0318SAR01R1

Page 69 of 110

EX3DV4- SN:3816

October 3, 2011

Frequency Response of E-Field
(TEM-Cell:ifi110 EXX, Waveguide: R22)



Uncertainty of Frequency Response of E-field: $\pm 6.3\%$ (k=2)

TA Technology (Shanghai) Co., Ltd.
Test Report

Report No. RZA1203-0318SAR01R1

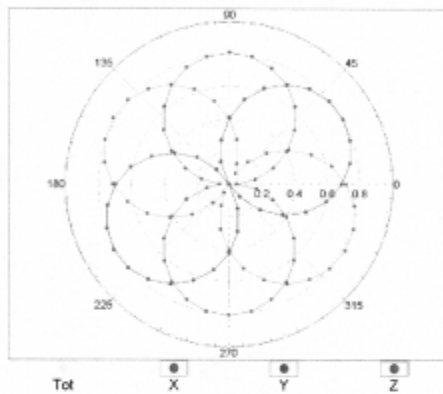
Page 70 of 110

EX3DV4- SN:3816

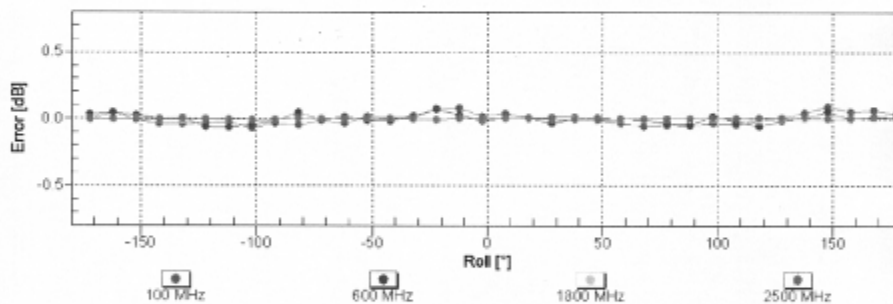
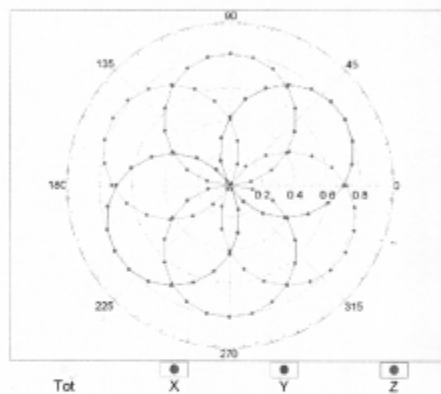
October 3, 2011

Receiving Pattern (ϕ), $\theta = 0^\circ$

f=600 MHz,TEM



f=1800 MHz,R22



Uncertainty of Axial Isotropy Assessment: $\pm 0.5\%$ (k=2)