



Figure 5 - System Module Overall



Figure 6 - System Module, cover removed



Figure 7 - System Module, main board top



Figure 8 - System Module, main board bottom



Figure 9 - System Module - DSP Board top

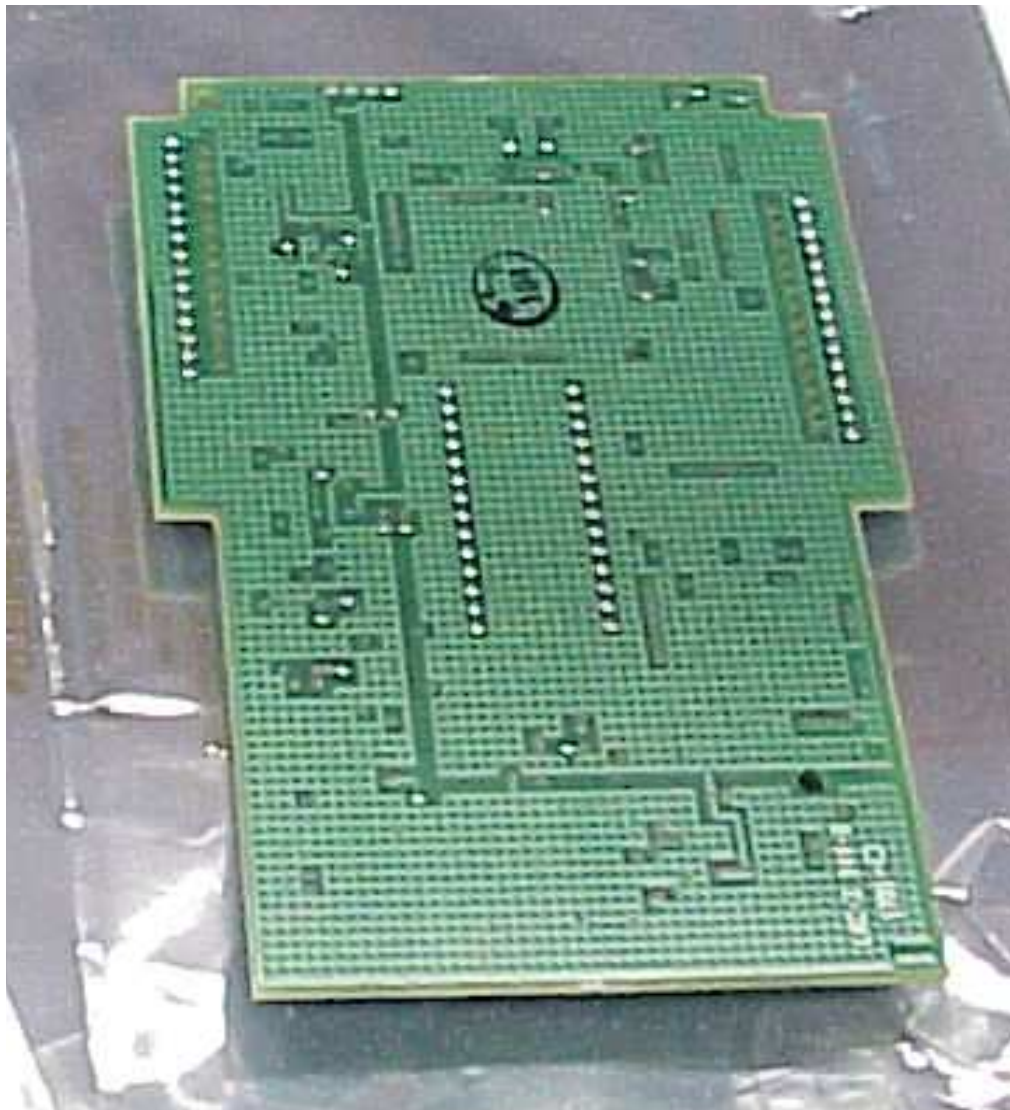


Figure 10 - System Module - DSP Board bottom

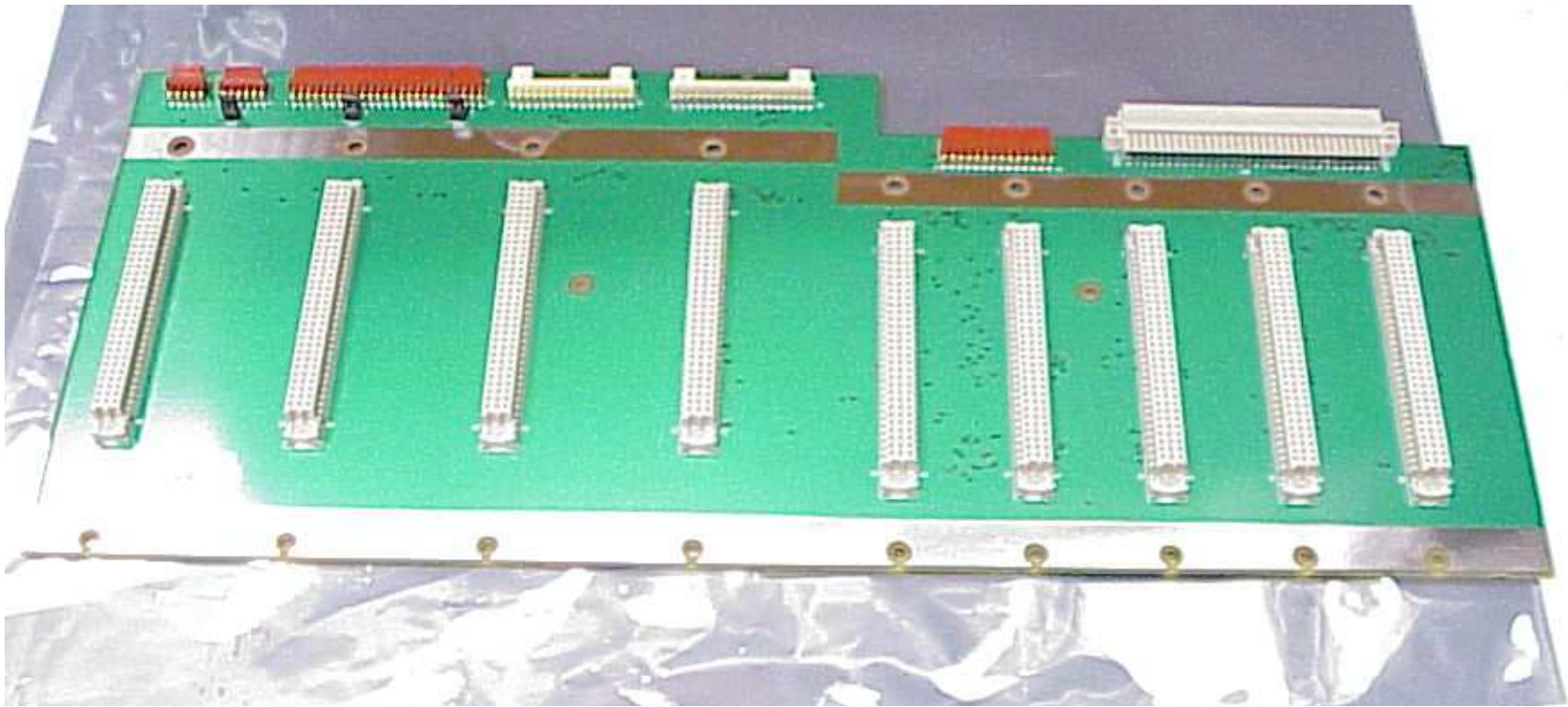


Figure 1 - Backplane Top

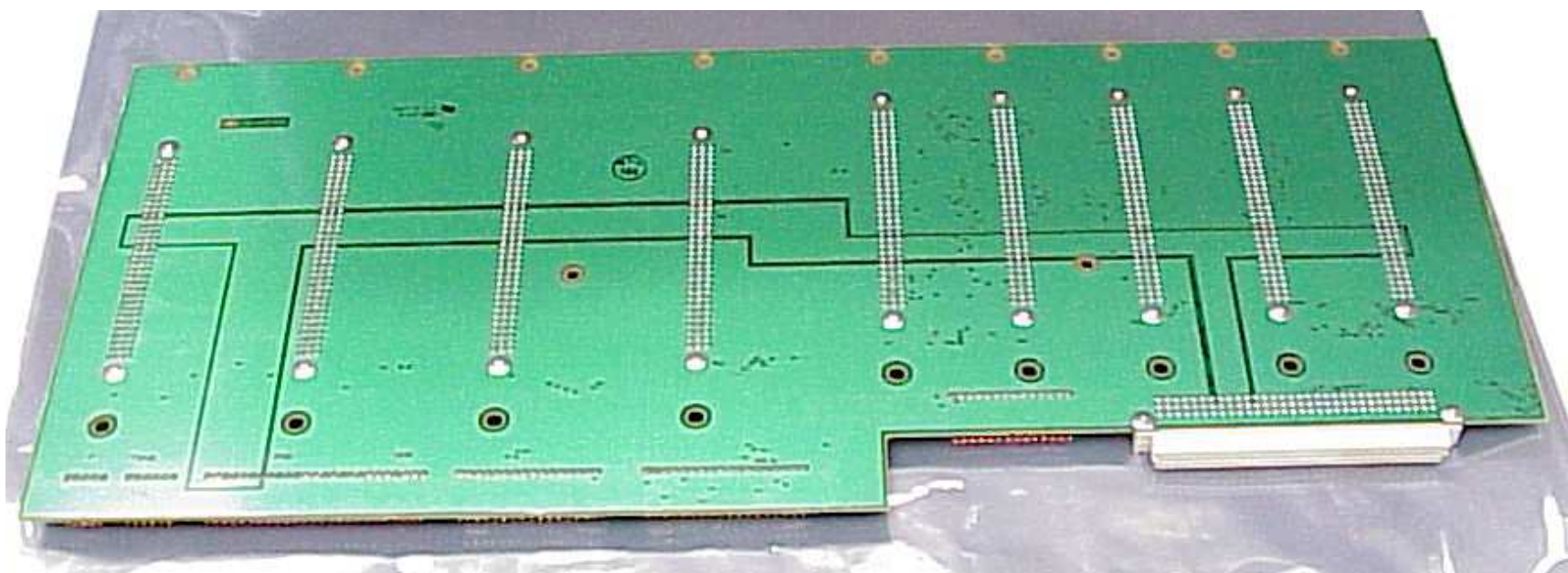


Figure 2 - Backplane Board Bottom

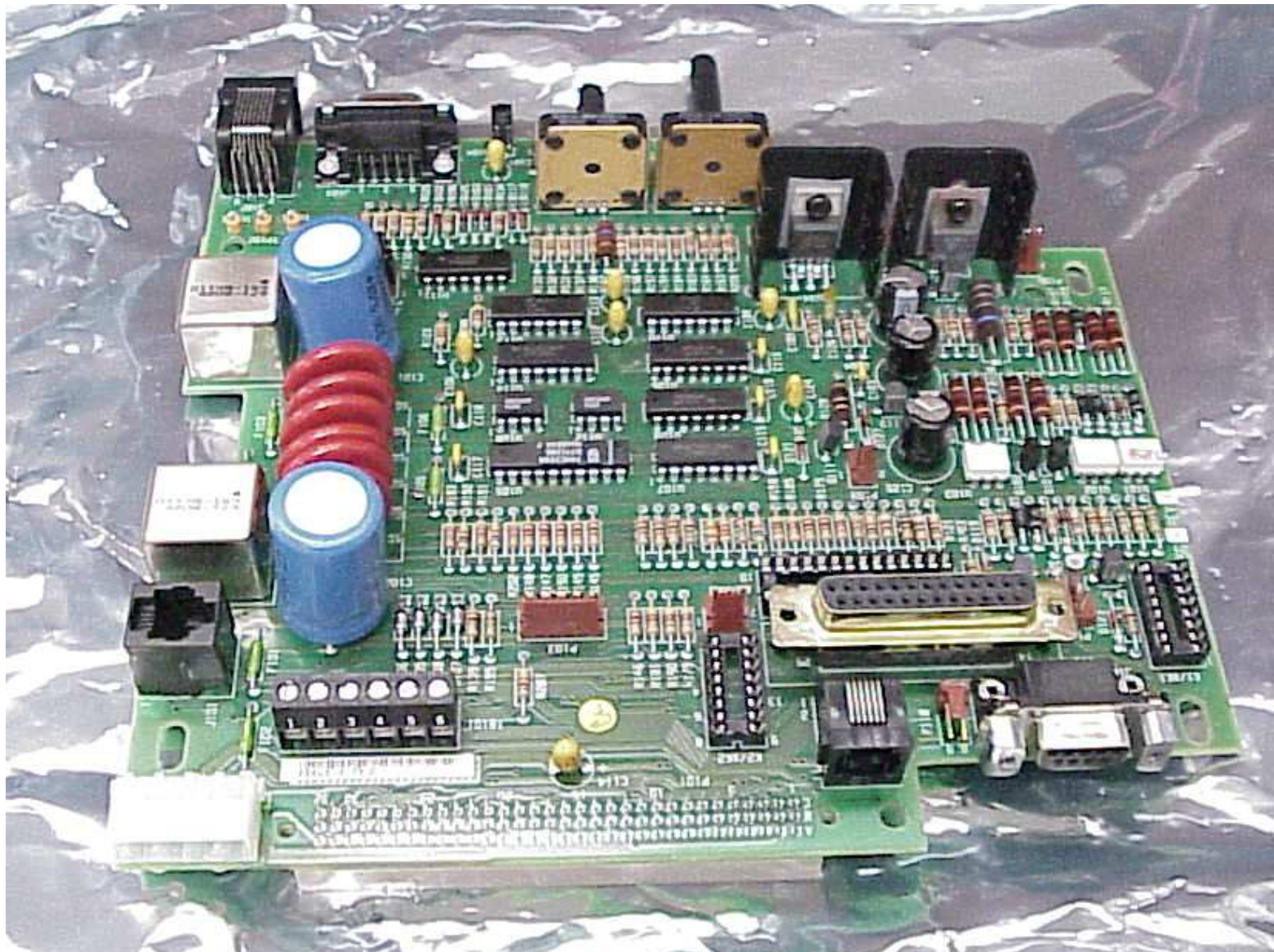


Figure 3 - Interface Board Top



Figure 4 - Interface Board Bottom

Figure 9: High frequency split Tx Synthesizer Front View Cover On



Figure 10: High frequency split Tx Synthesizer Front View Cover Off

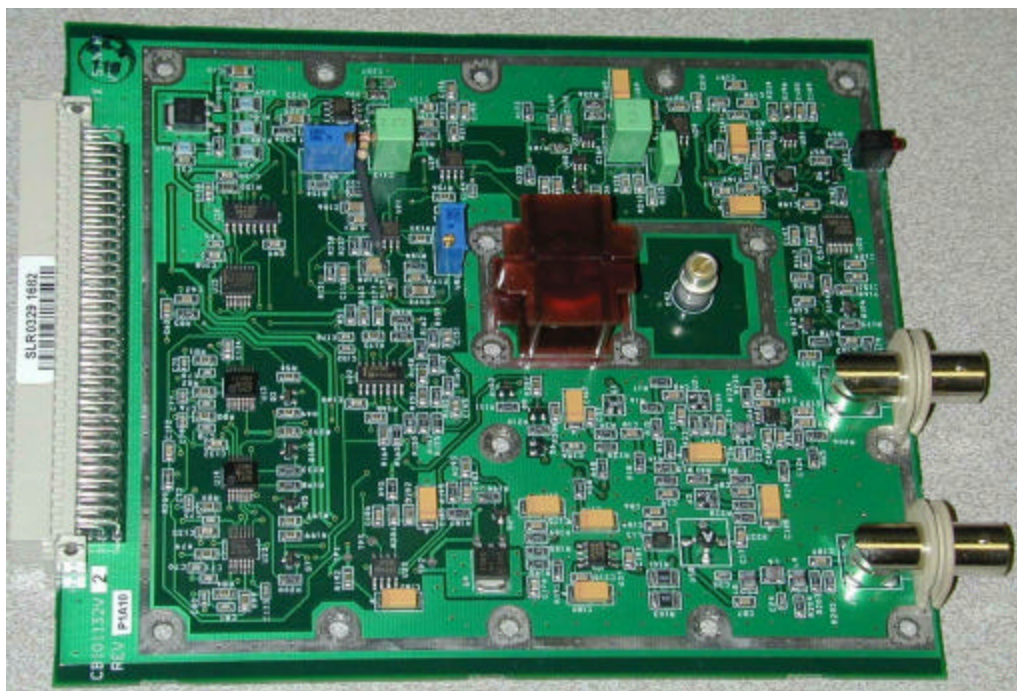


Figure 11: High frequency split Tx Synthesizer Back View Cover On

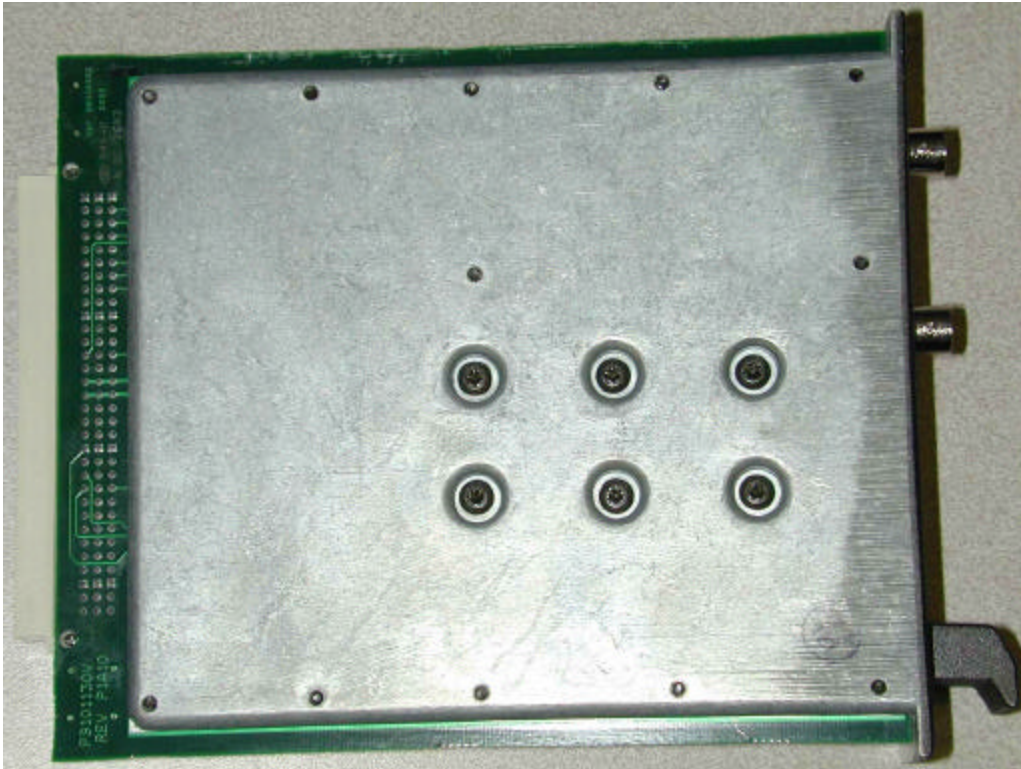


Figure 12: High frequency split Tx Synthesizer Back View Cover Off

