

Rhein Tech Laboratories, Inc.  
360 Herndon Parkway  
Suite 1400  
Herndon, VA 20170  
<http://www.rheintech.com>

Client: M/A COM, Inc.  
Model: MASTRII VHF Base Station  
ID's: OWDTR-0050-E/3636B-0050  
Standards: Part 90/RSS-119  
Report #: 2007124-002

## **Appendix N: Internal Photographs**

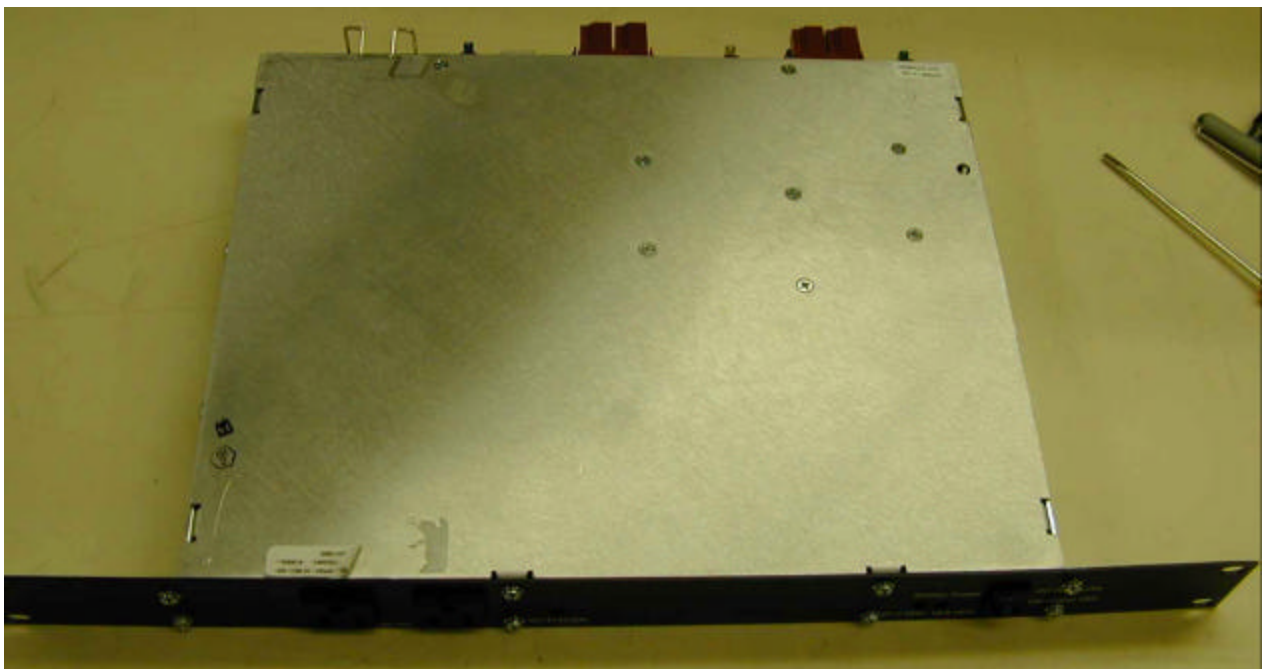
Please refer to the following pages.

## AC/DC Power Supply

**Figure 1: AC/DC Power Supply Front Cover**



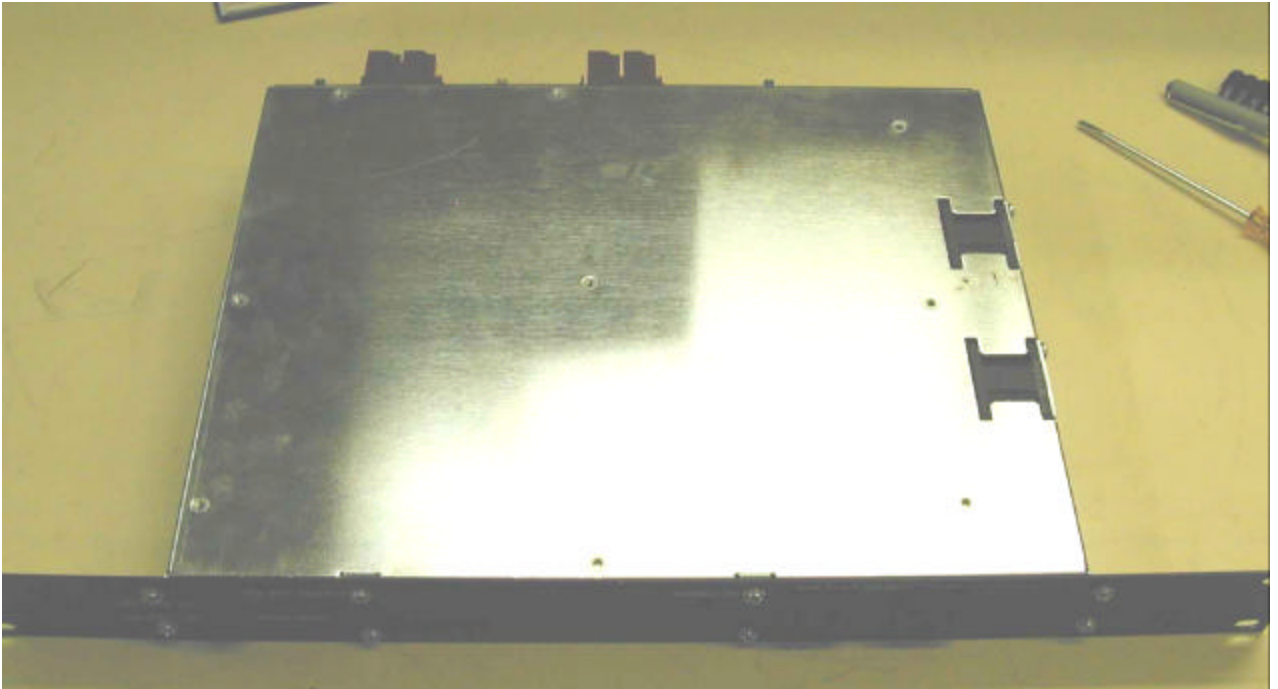
**Figure 2: AC/DC Power Supply Top Cover**



**Figure 3: AC/DC Power Supply Back Connectors**



**Figure 4: AC/DC Power Supply Bottom Cover**



**Figure 5: AC/DC Power Supply Top of Board**

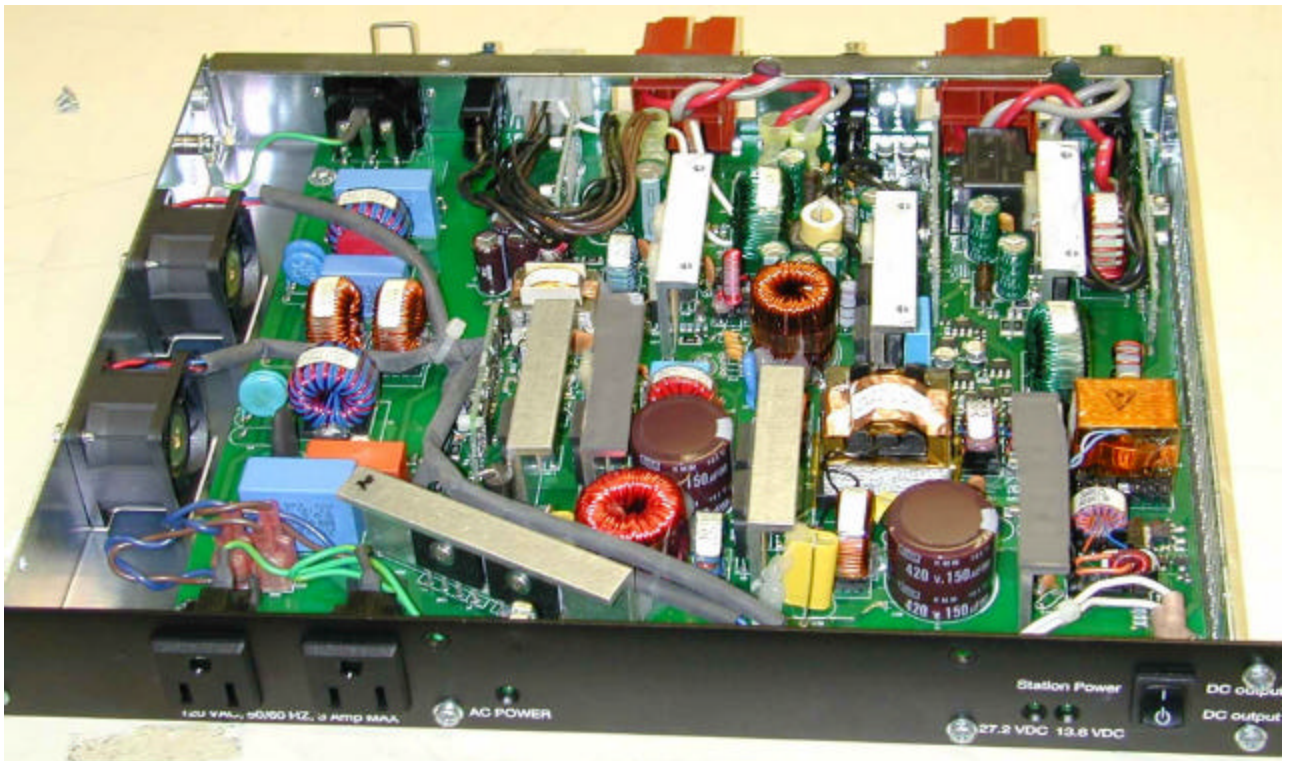




Figure 11 a). DSP module front



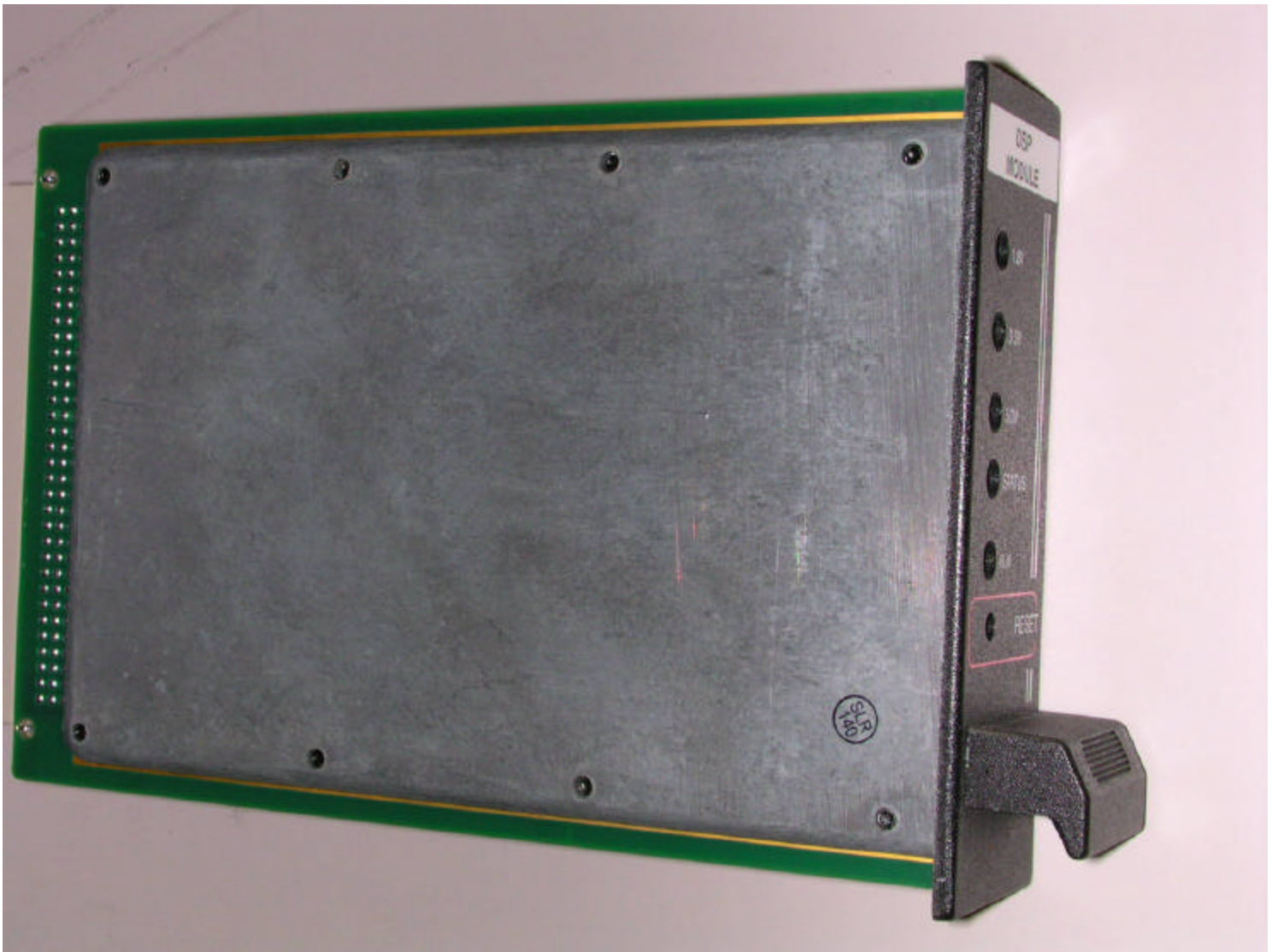


Figure 11 b) DSP module back

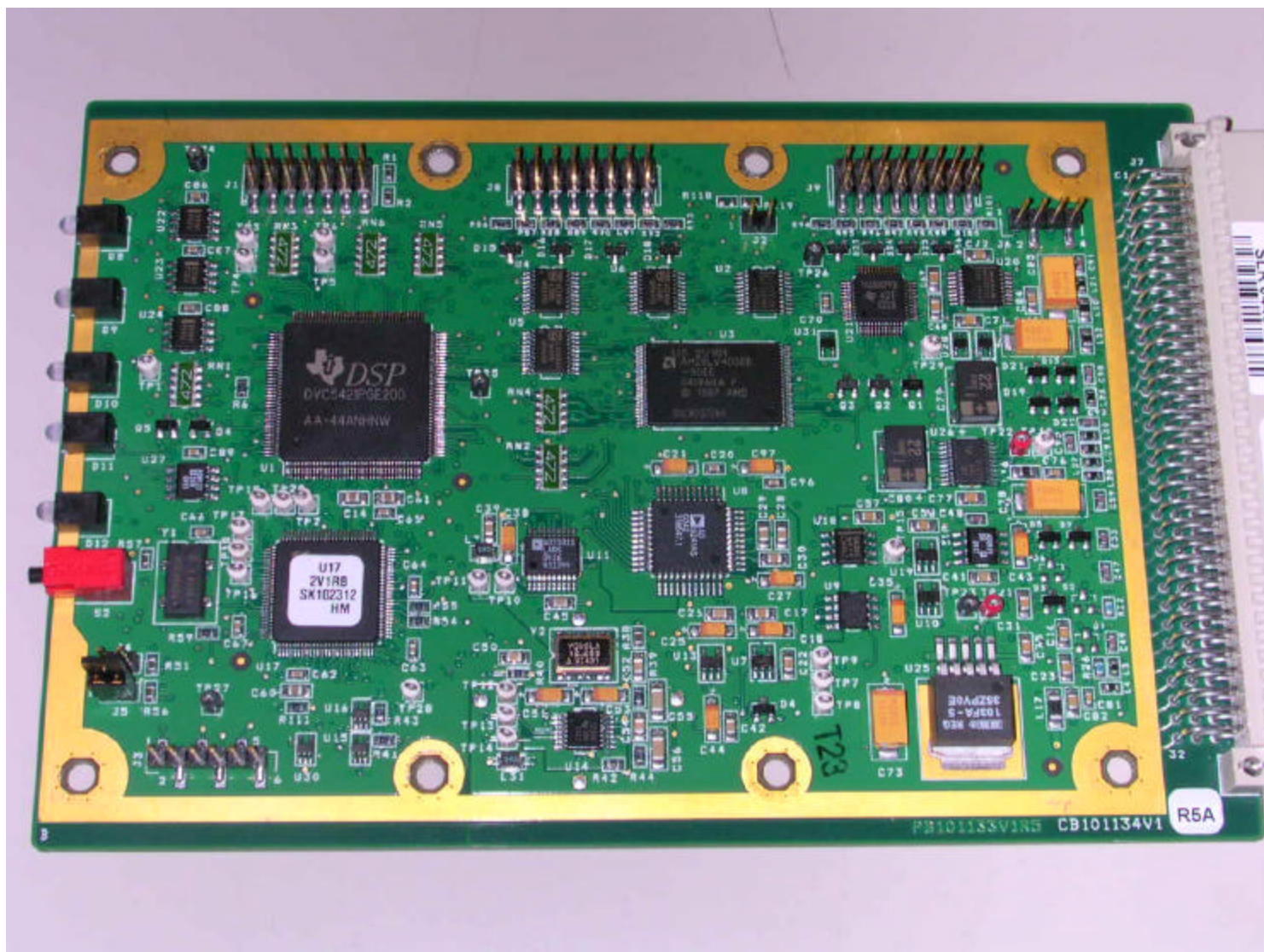


Figure 12. DSP module (component side)





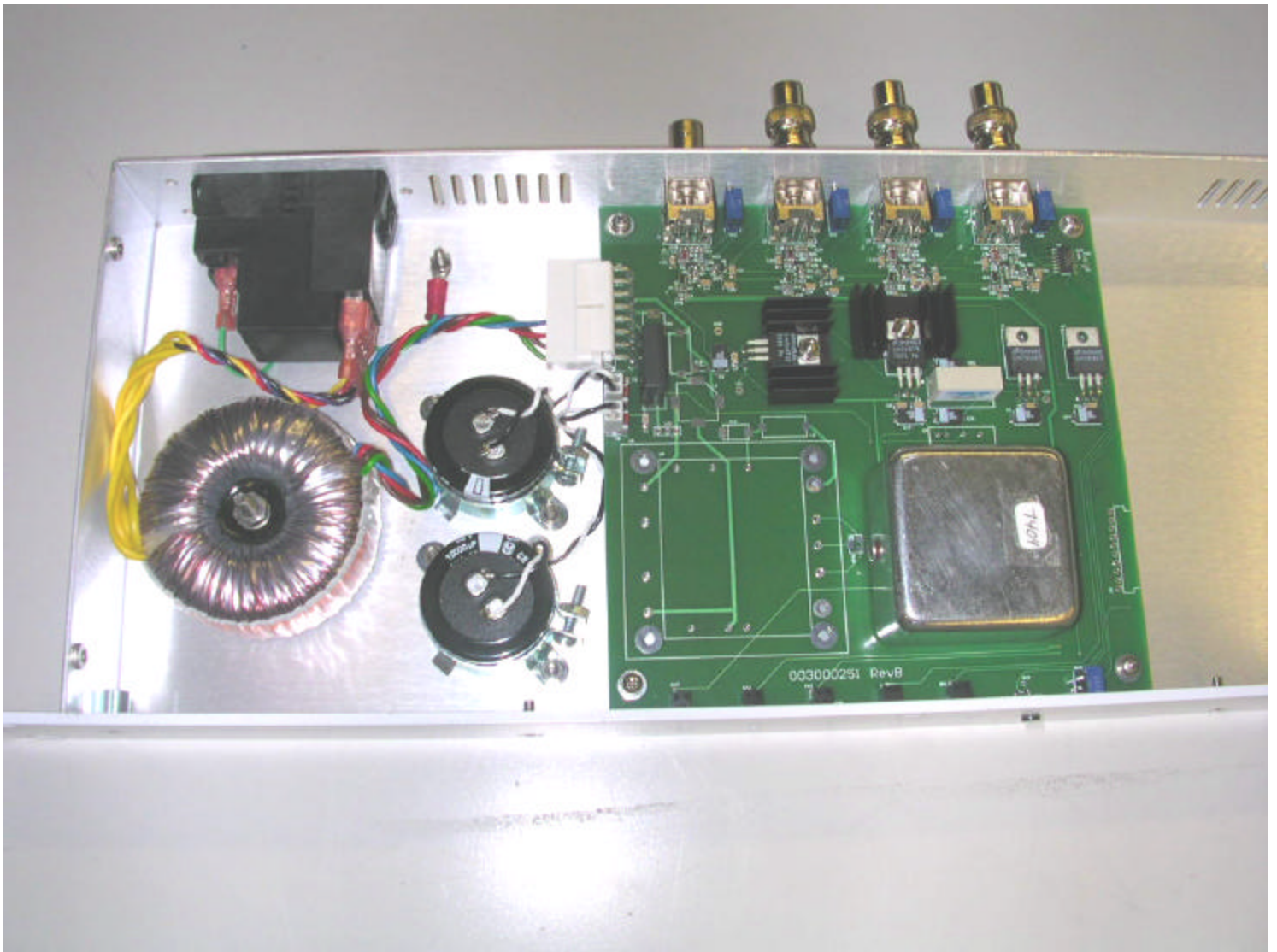


Brandywine 10 MHz frequency reference (front)

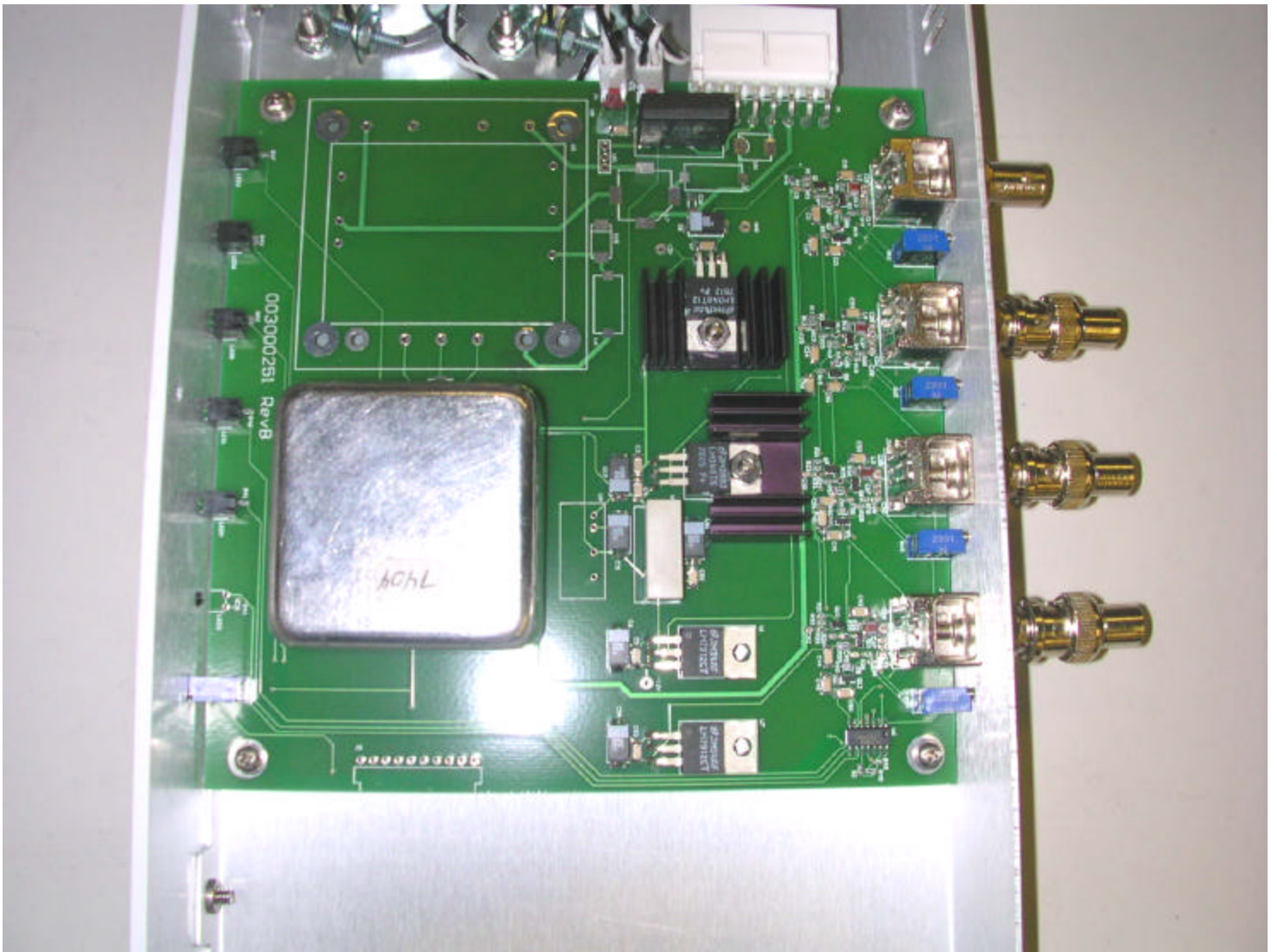




Brandywine 10 MHz frequency reference (back)

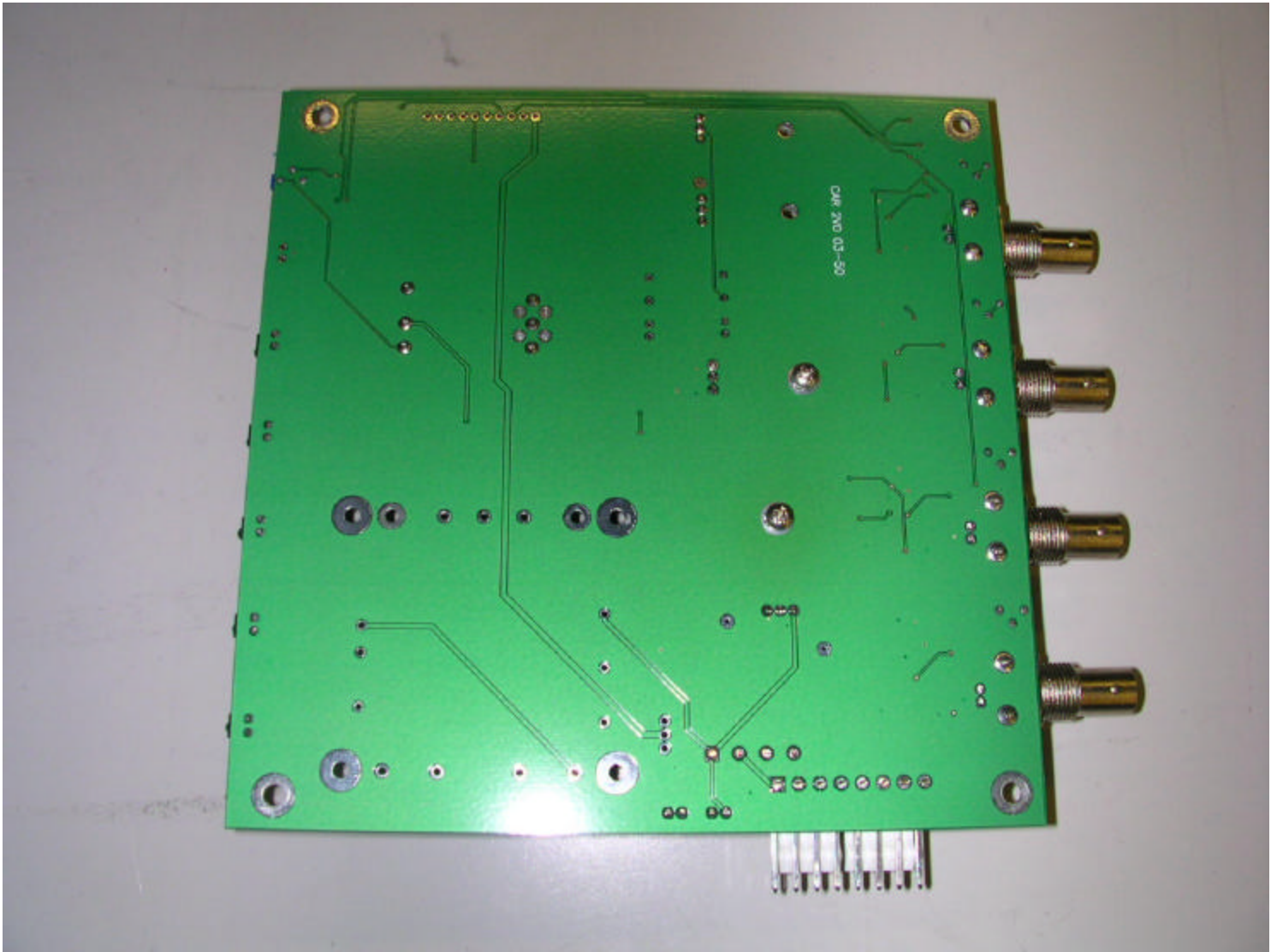


Brandywine 10 MHz frequency reference (open cover)

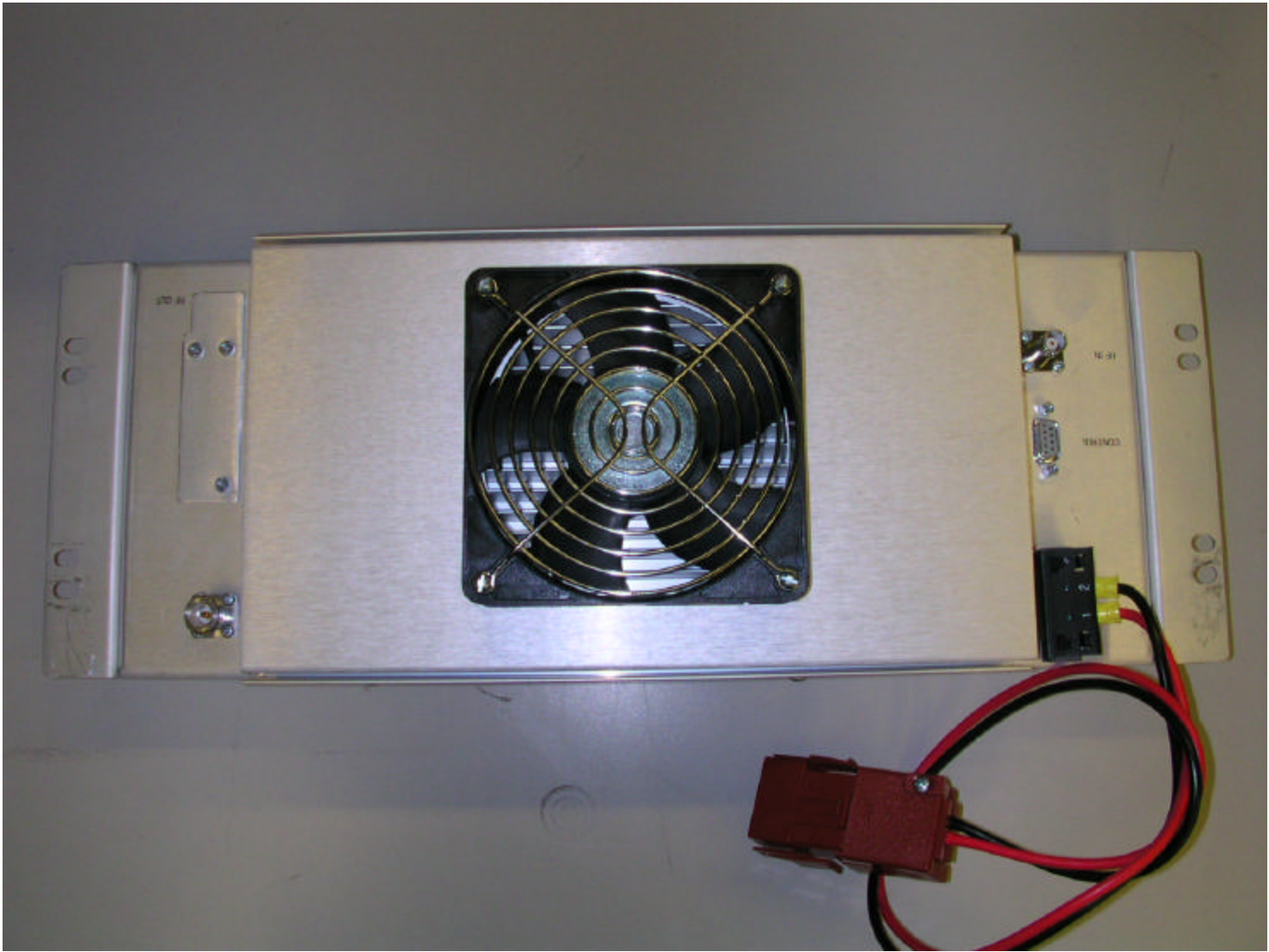


Brandywine 10 MHz frequency reference PCB (component side)

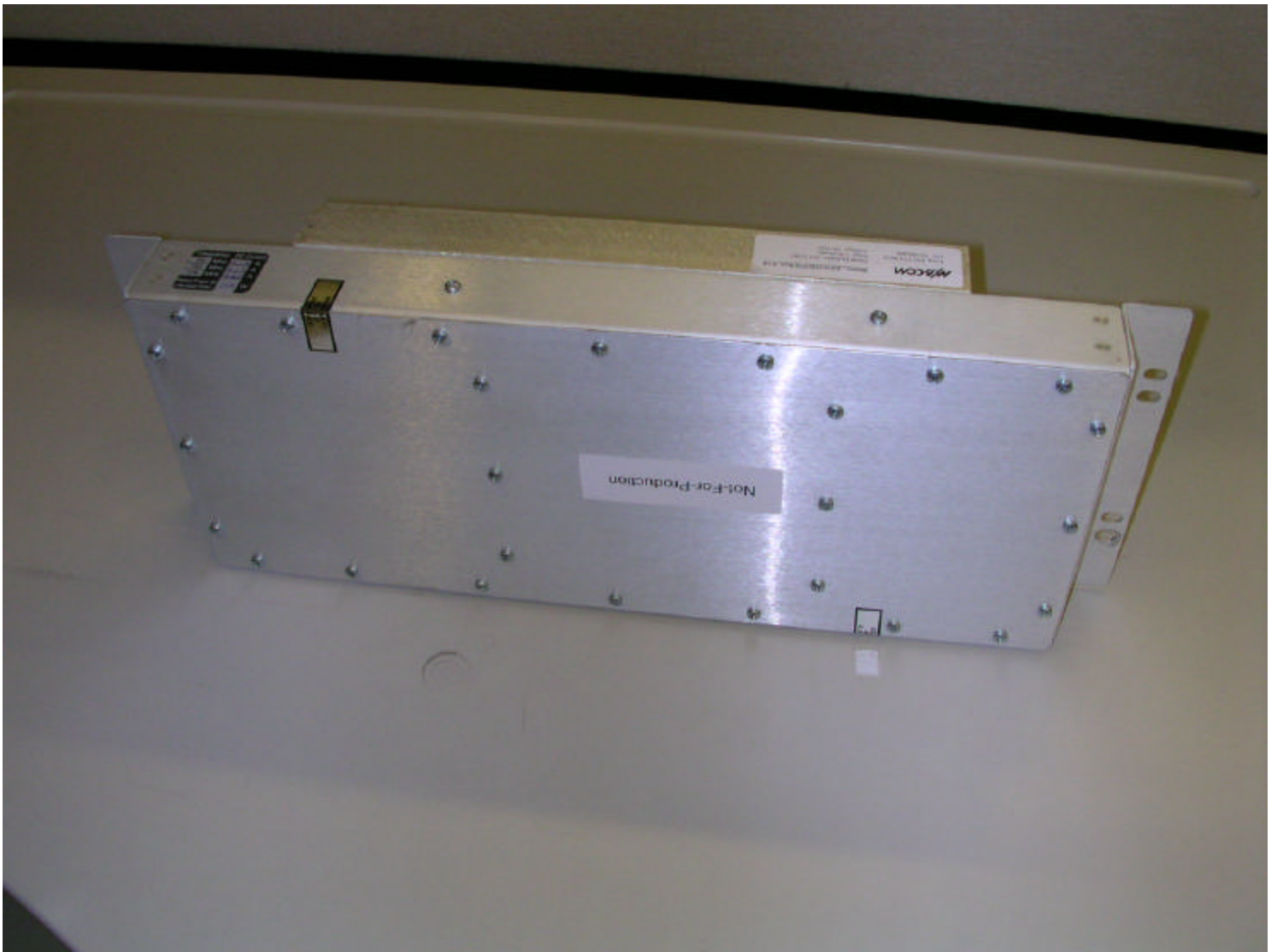




Brandywine 10 MHz frequency reference PCB (secondary side)

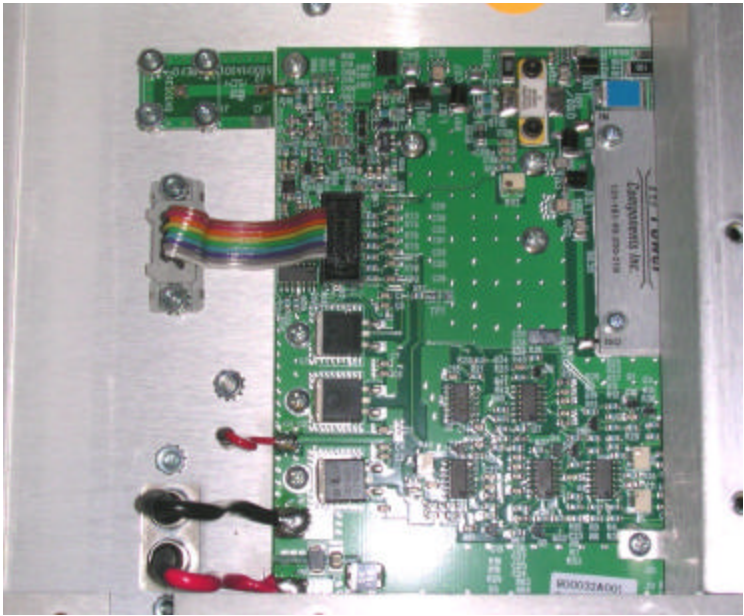


Power Amplifier External View

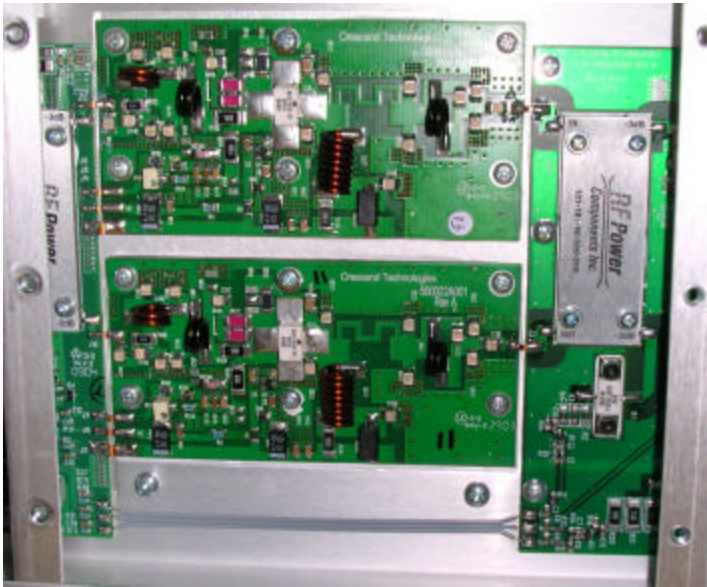


Power Amplifier Back View





Internal Picture 1



Internal Picture 2



Internal Picture 3 - High Frequency Split

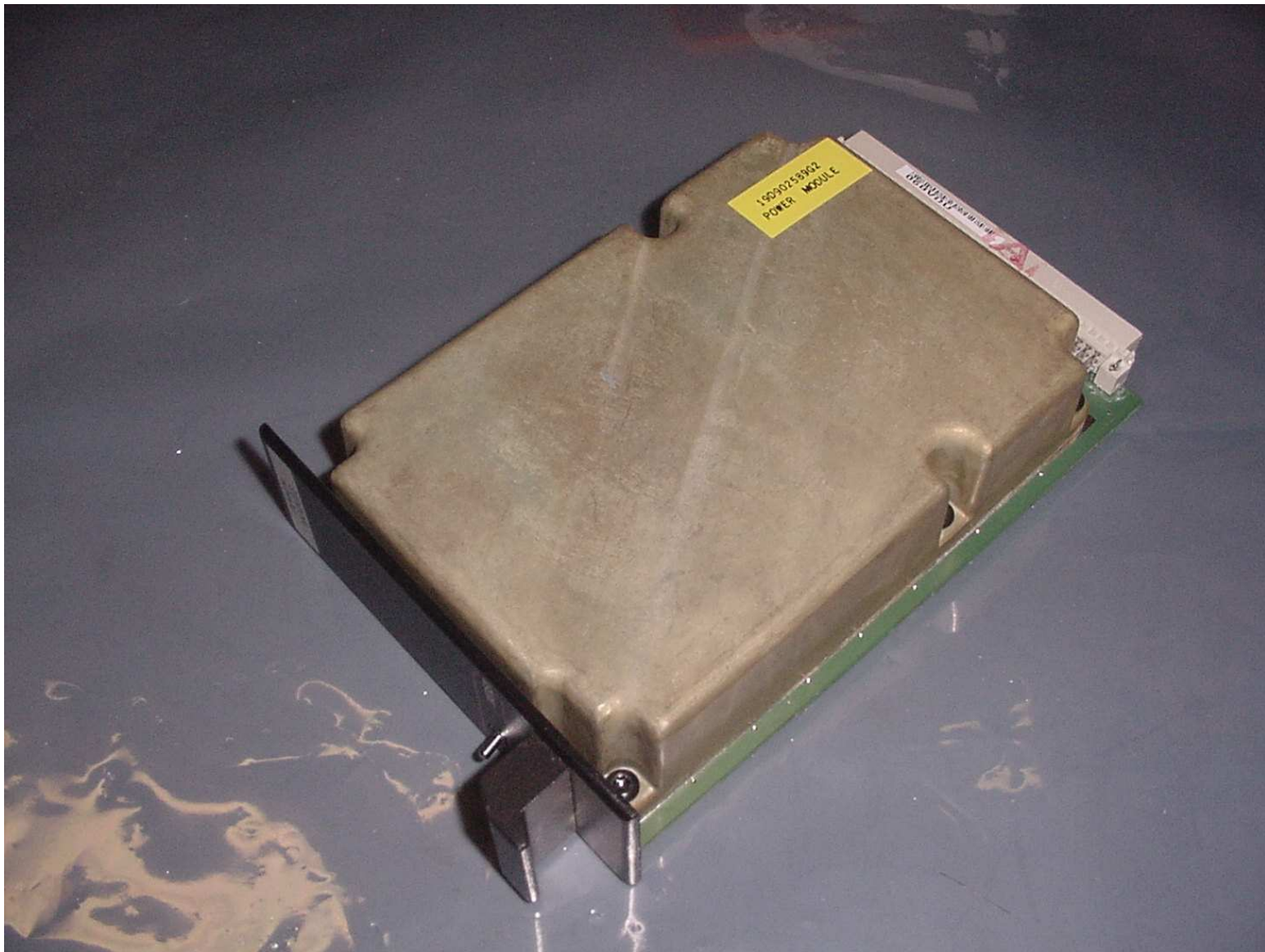


Figure 14 - Power Module Overall





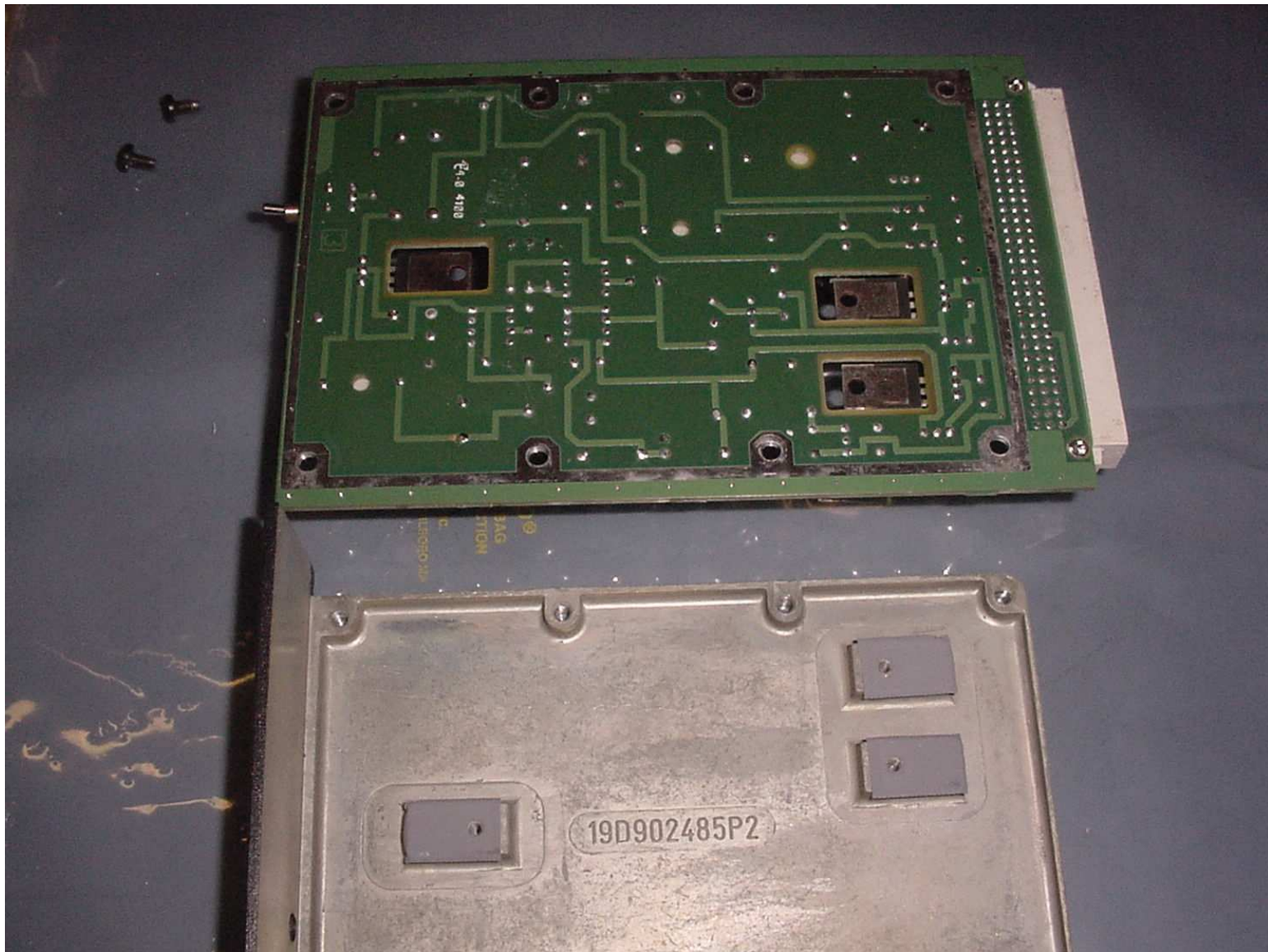


Figure 16 - Power Module Board Bottom