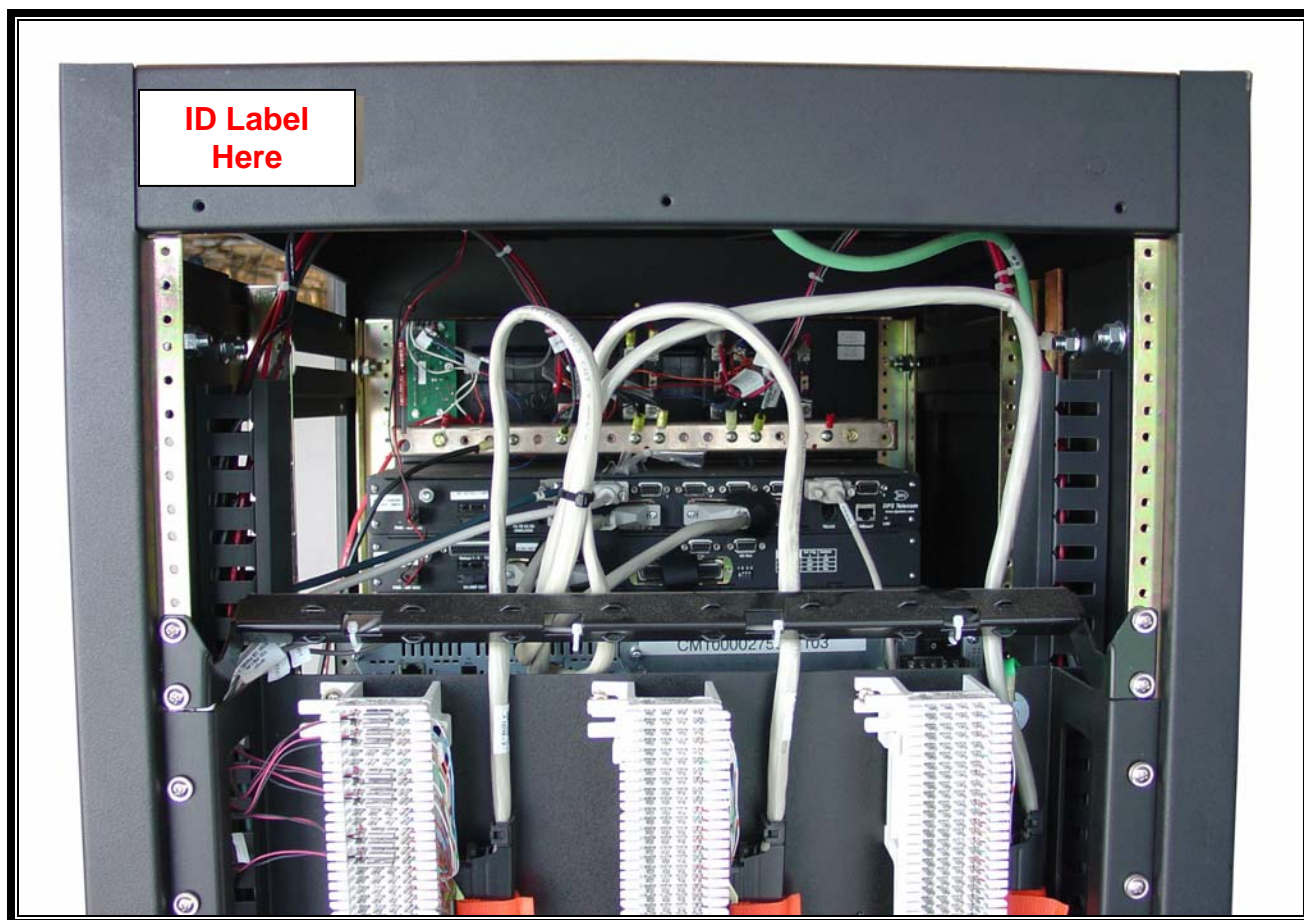


## Appendix J: Label & Location



**Photograph 1: ID Label Location**

Note - Label is mounted on outside surface of side, visible when flush-mounted back cover is attached)

Please see the following page for an ID label sample.

**M/A — COM, Inc**

MODL: xxxx

SER#: 9866219



DEVICE COMPLIES WITH FCC RULE  
PART 15. OPERATION IS SUBJECT  
TO THE CONDITION THAT THIS  
DEVICE DOES NOT CAUSE HARMFUL INTERFERENCE

**FCC ID: OWDTR-0050-E**

INPUT:

IC: 3636B-0050

TR-0050

Single Phase

03385

MADE IN LYNCHBURG, VA. USA