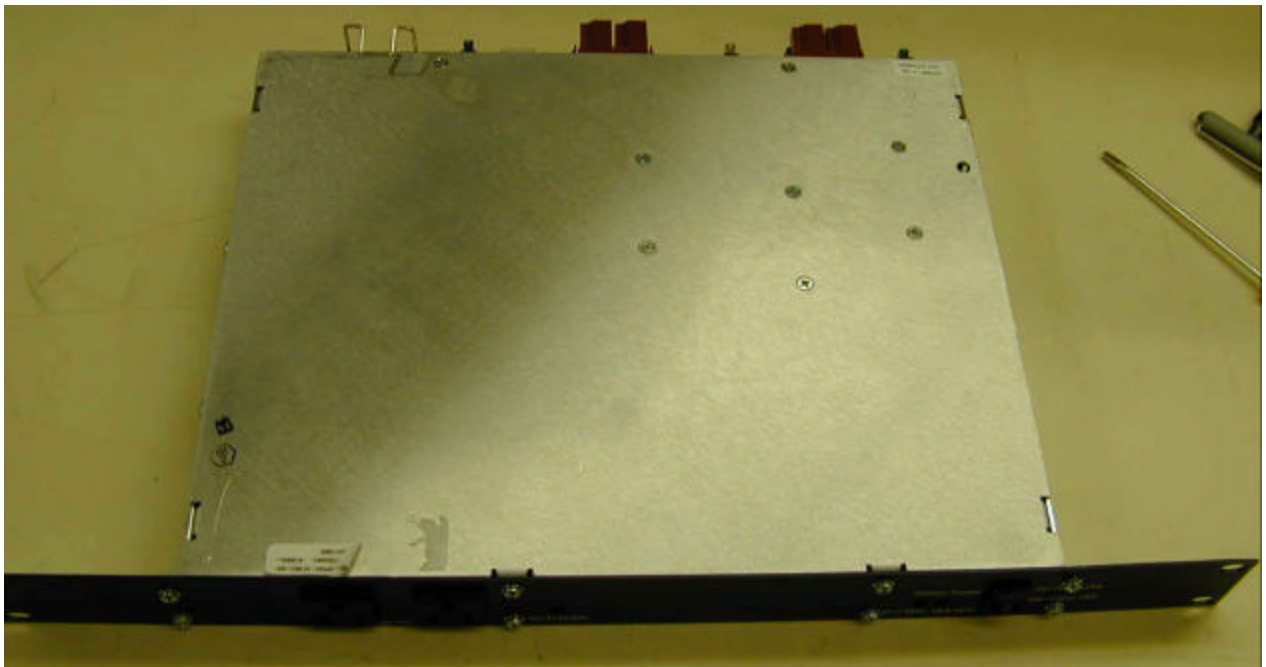


AC/DC Power Supply  
Model: SP593-1A Rev X02  
Input: 100/240V 47-63 Hz  
S/N: QG12659  
Board: 112959 X02

**Figure 1: AC/DC Power Supply Front Cover**



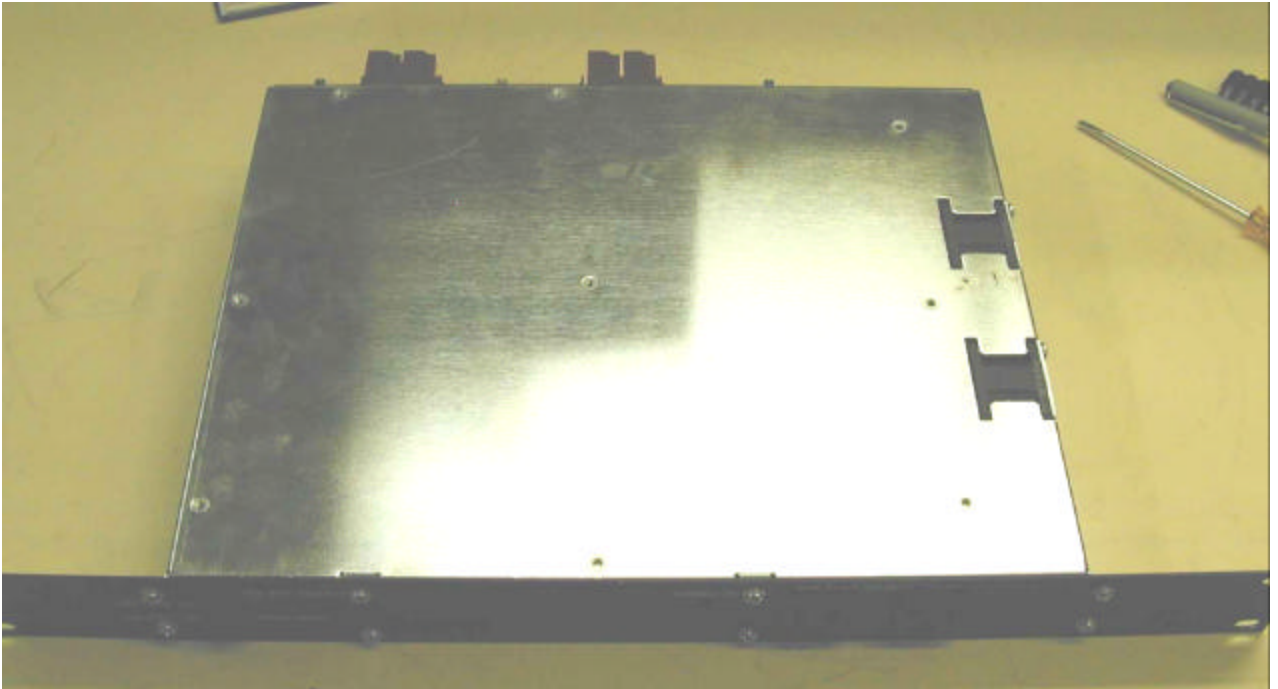
**Figure 2: AC/DC Power Supply Top Cover**



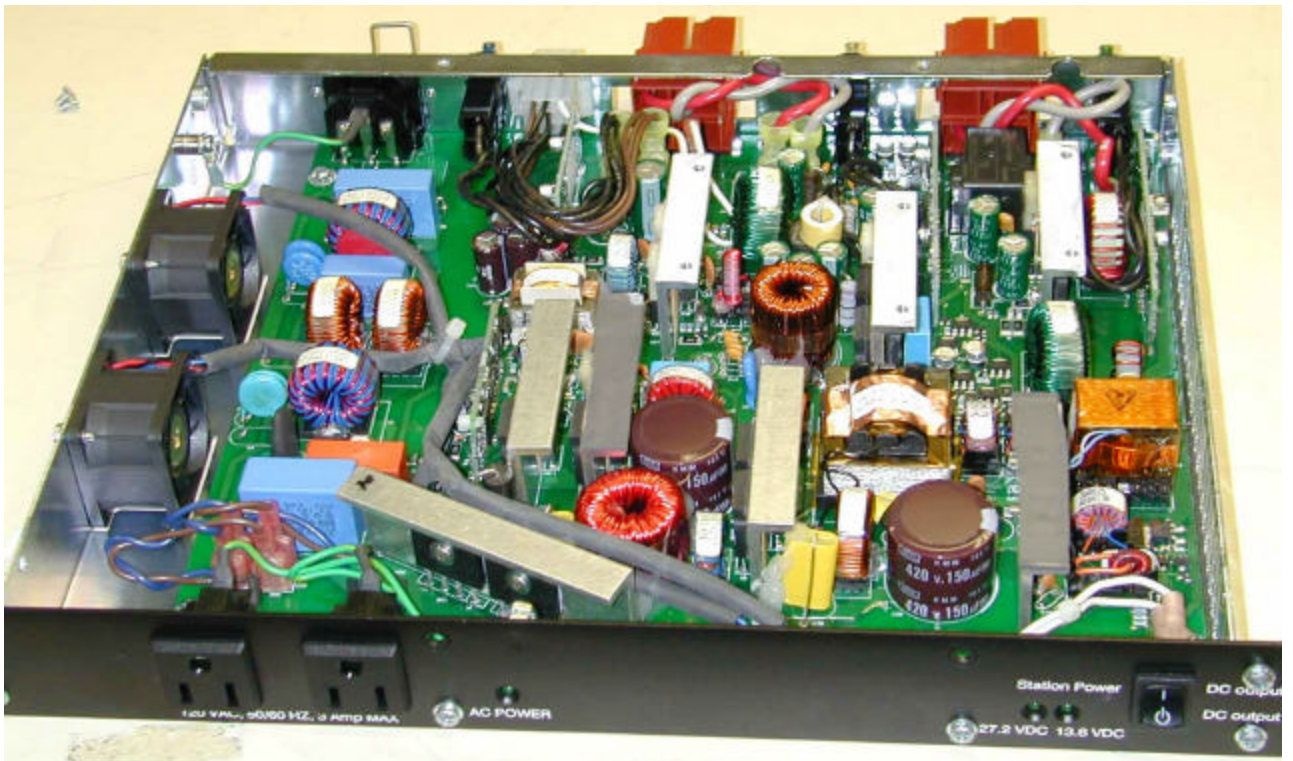
**Figure 3: AC/DC Power Supply Back Connectors**



**Figure 4: AC/DC Power Supply Bottom Cover**



**Figure 5: AC/DC Power Supply Top of Board**

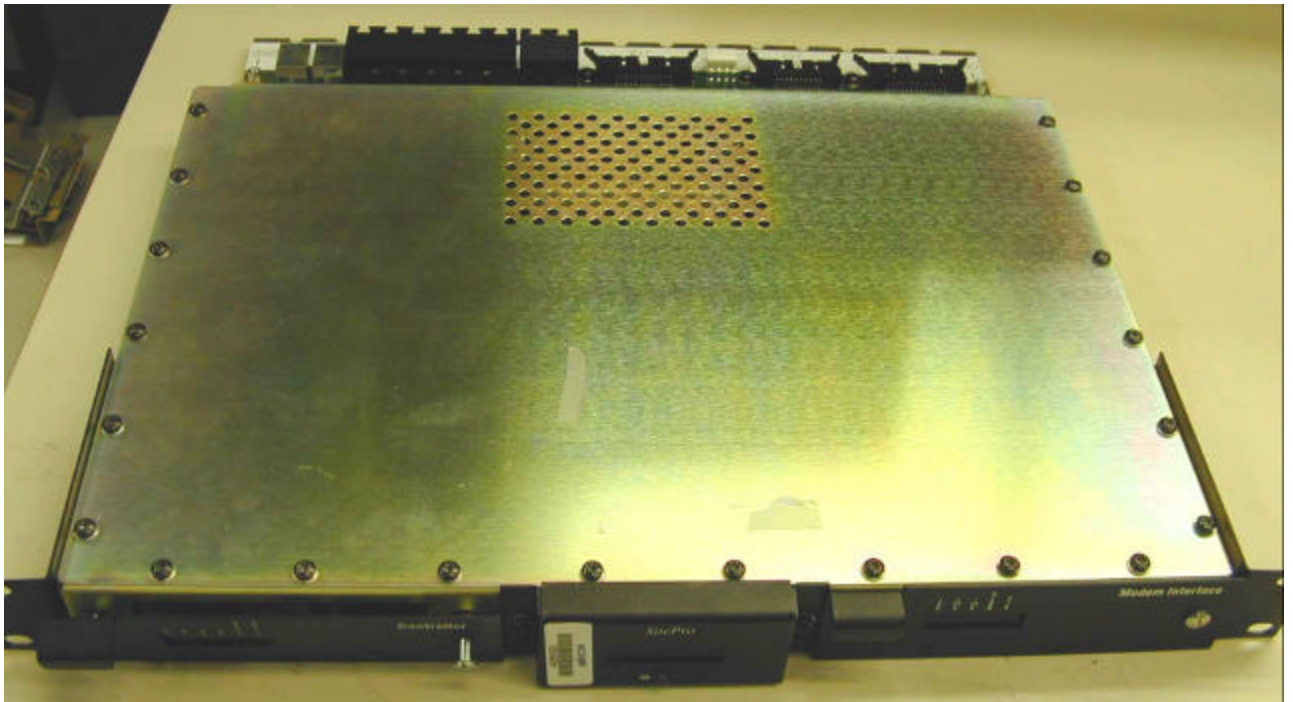


SitePro: 428932 Macom 9851167

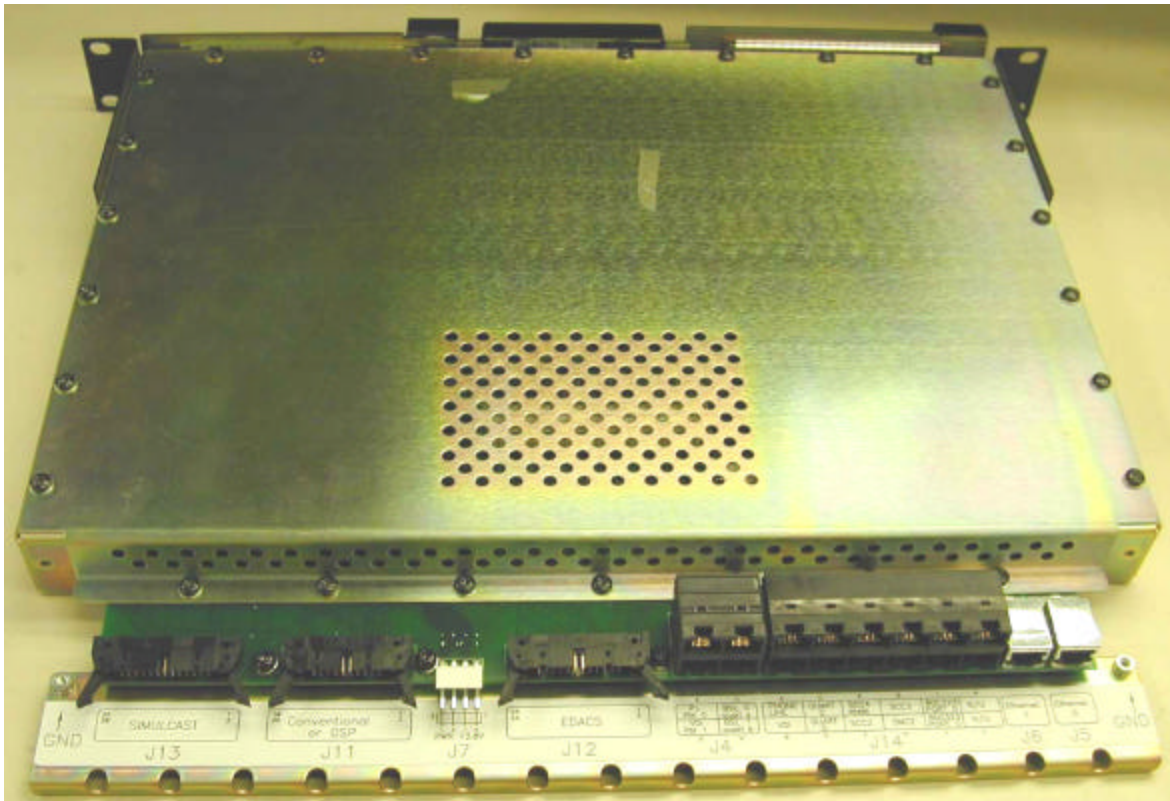
**Figure 6: SitePro Front Cover**



**Figure 7: SitePro Top Cover**



**Figure 8: SitePro Back Connectors**



**Figure 9: SitePro Bottom Cover**

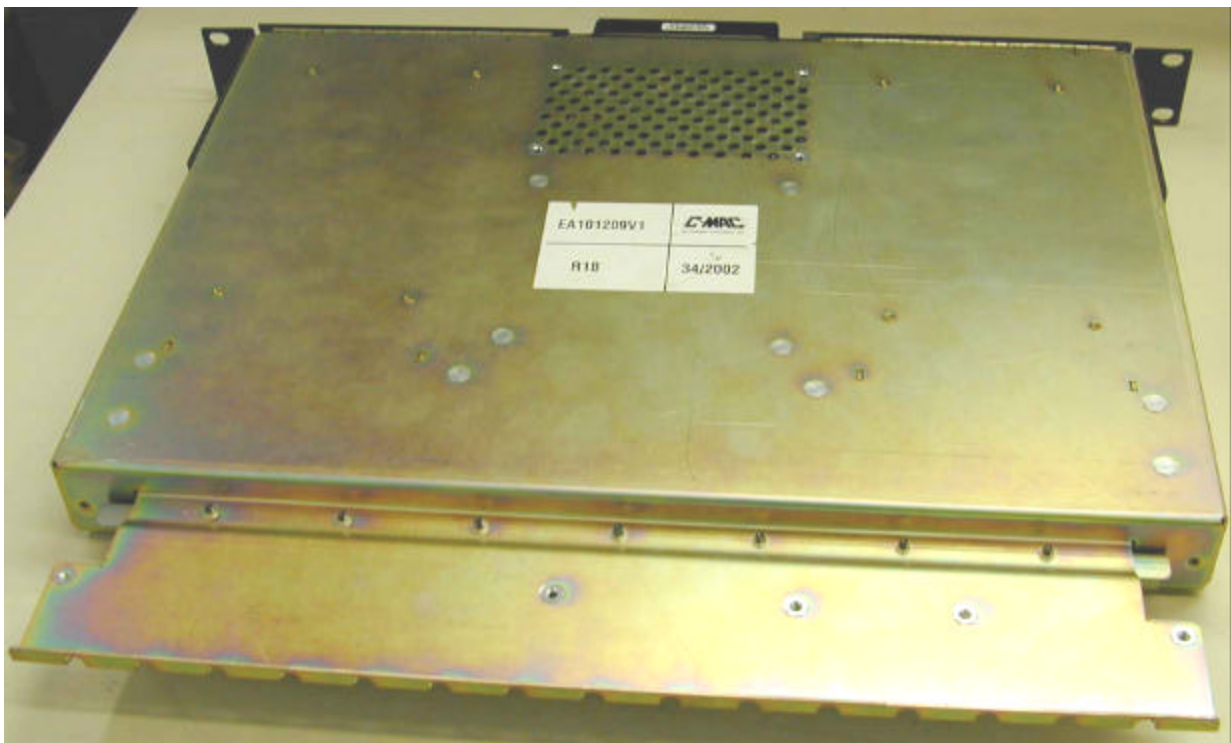
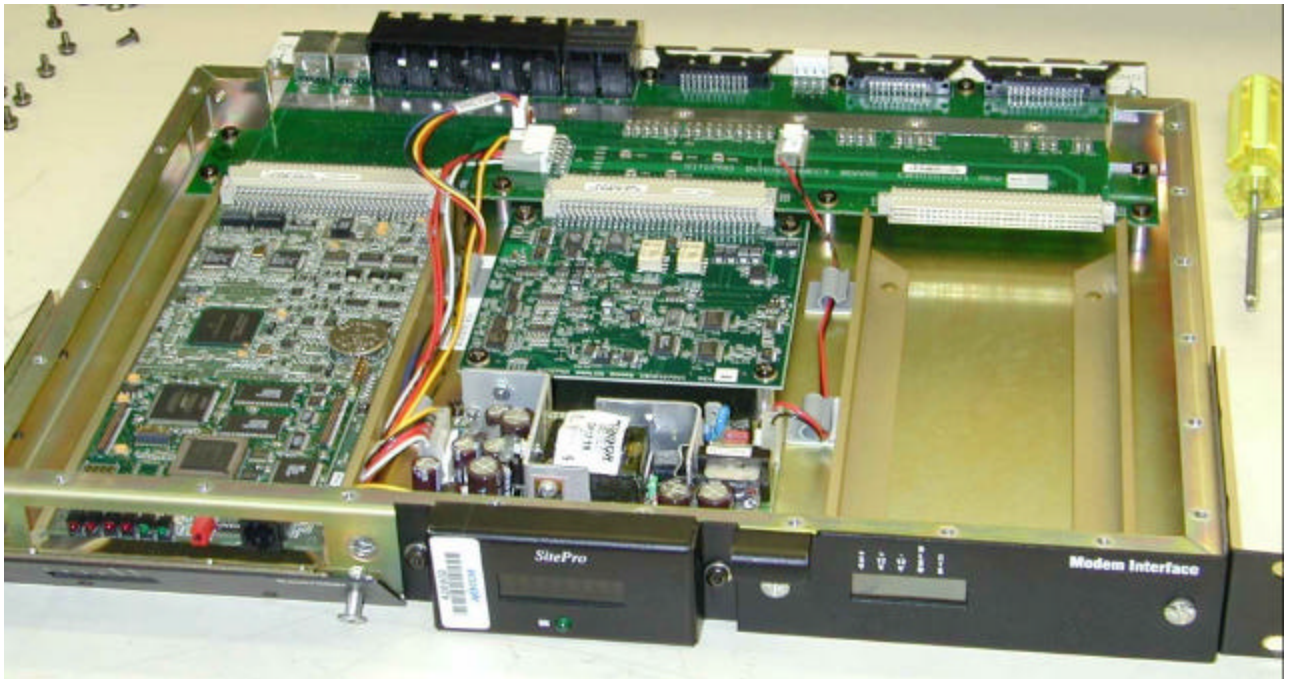


Figure 10: Tops of All SitePro Boards



Sub-board on Controller Card: CB101869V 1/R1A 22

Figure 11: Sub-board on Controller Card Front

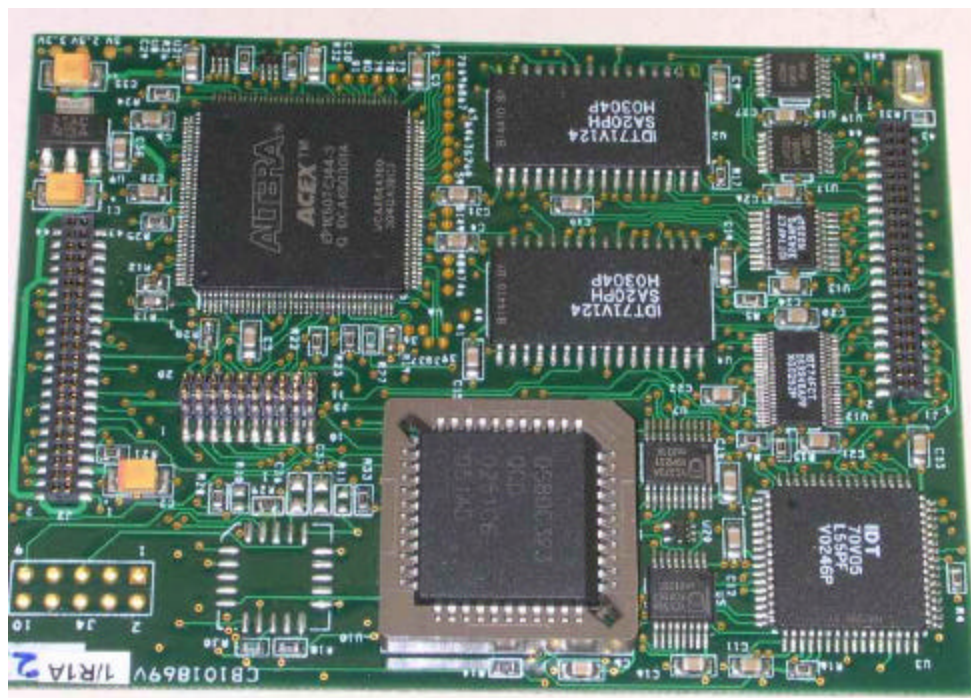
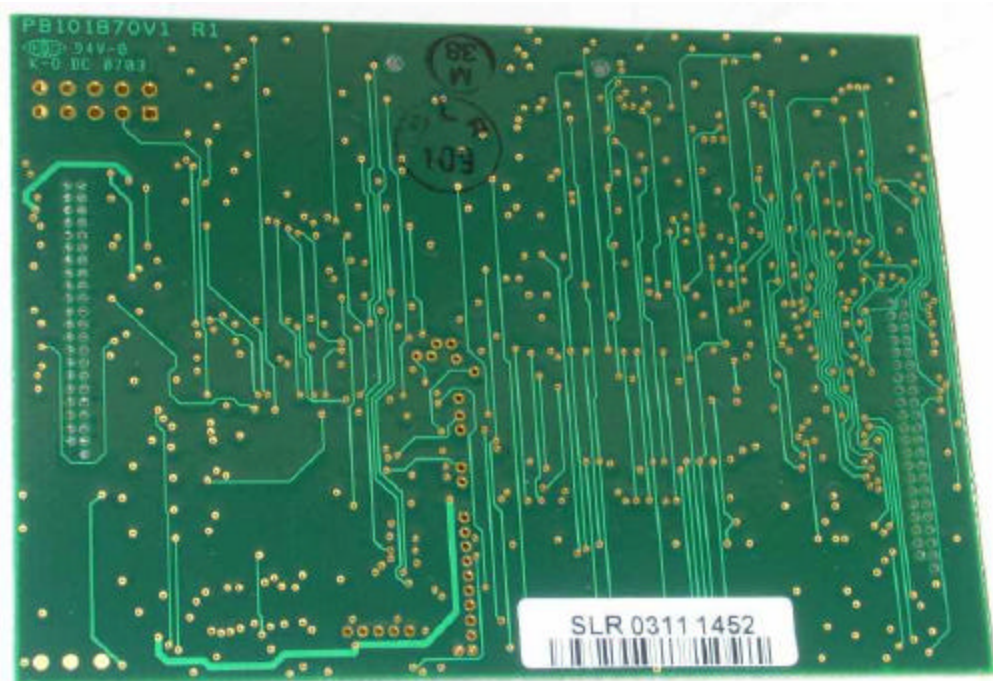
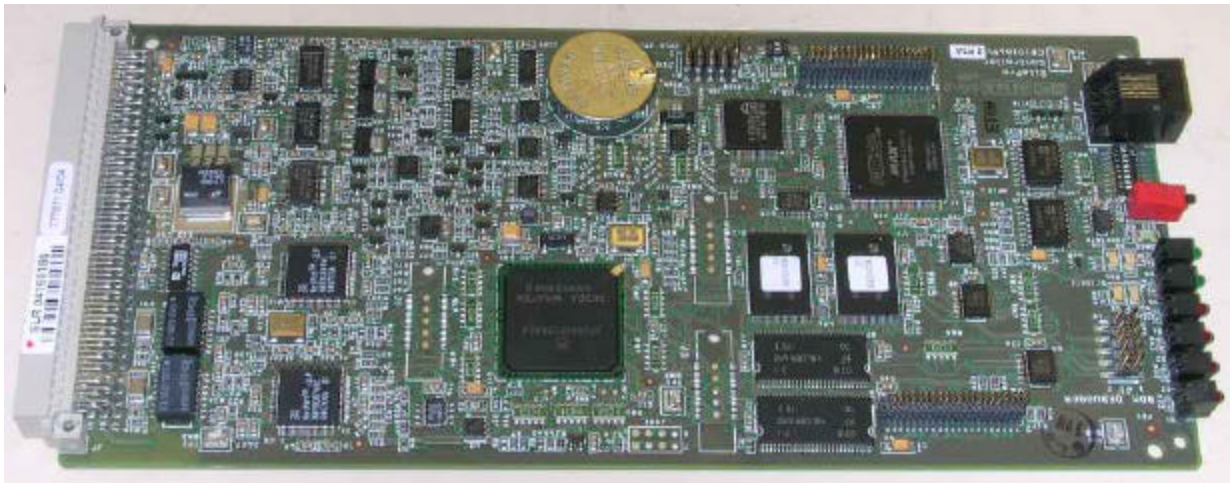


Figure 12: Sub-board on Controller Card Back

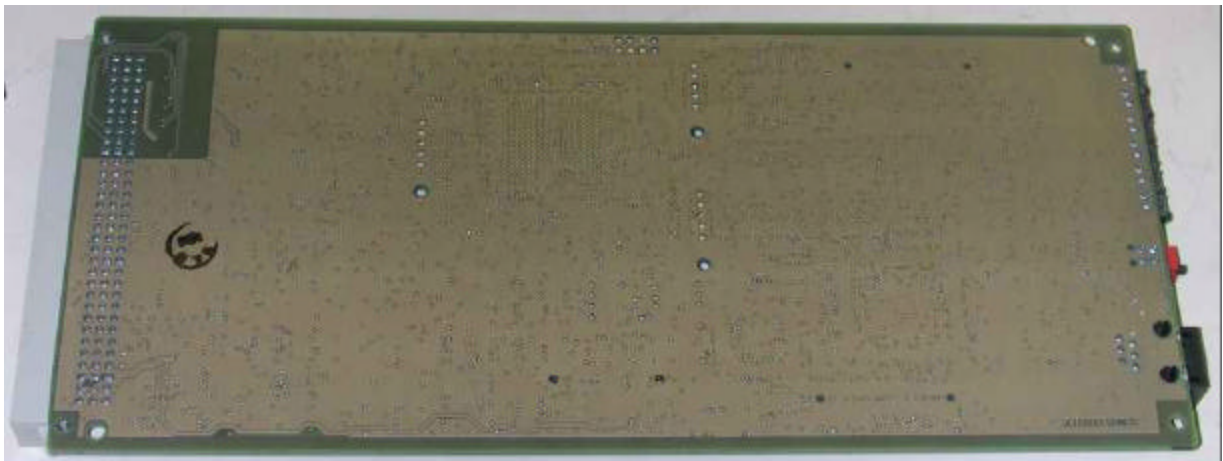


## Sitepro Controller Board: CB101069V2 P3A

**Figure 13: Sitepro Controller Card Front**

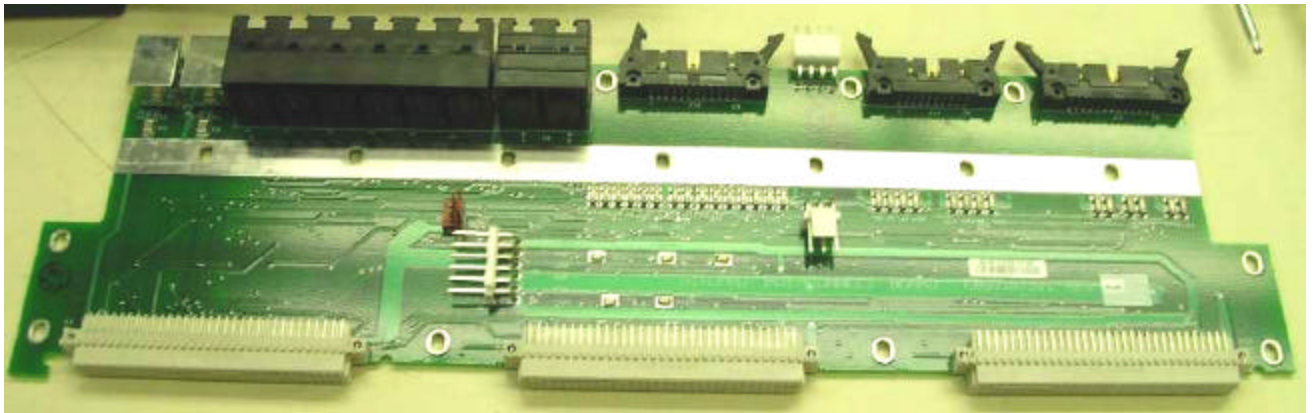


**Figure 14: Sitepro Controller Card Back**

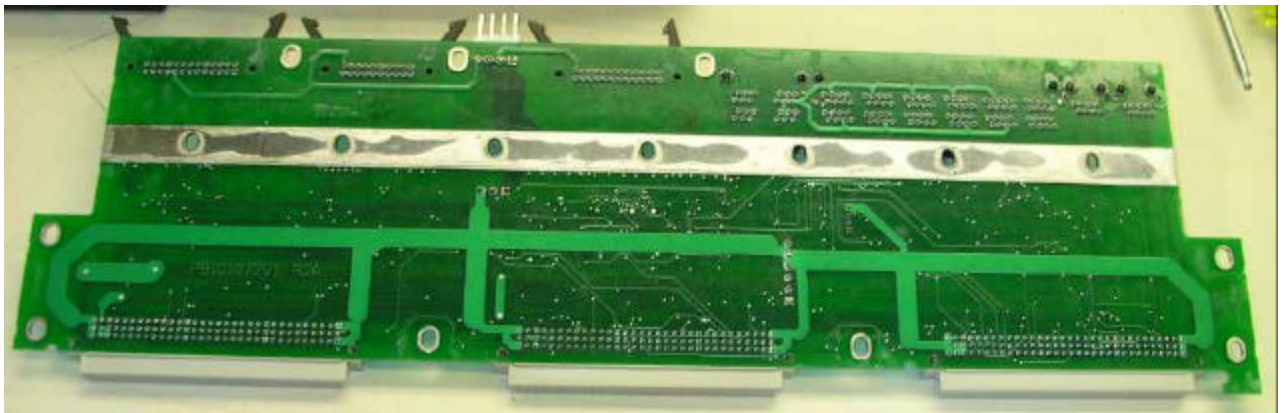


Sitepro Interconnect Board: CB101073V1 Rev R2A

**Figure 15: Sitepro Interconnect Board Front**

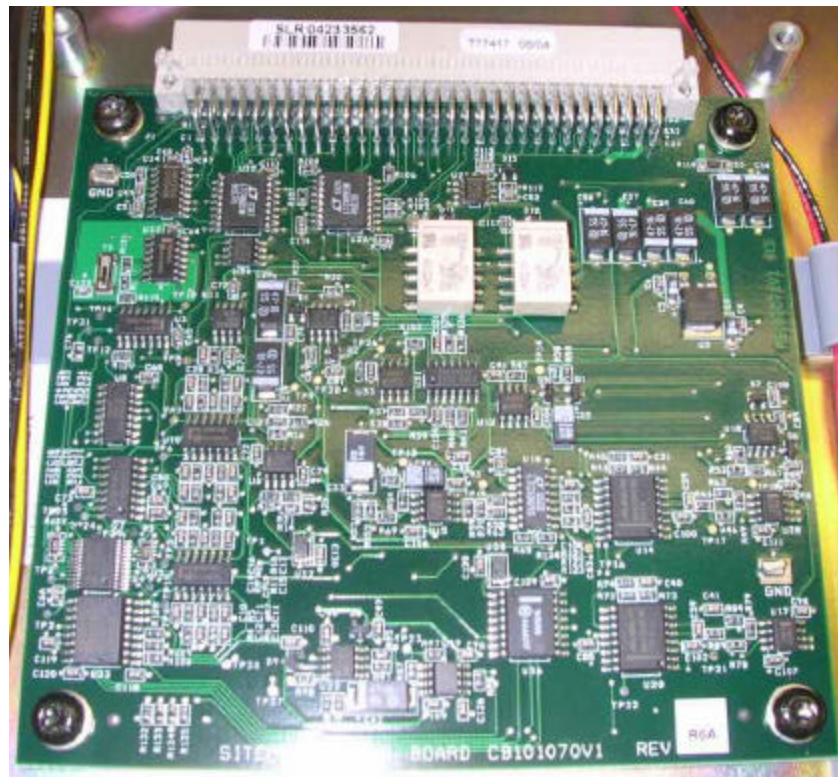


**Figure 16: Sitepro Interconnect Board Back**

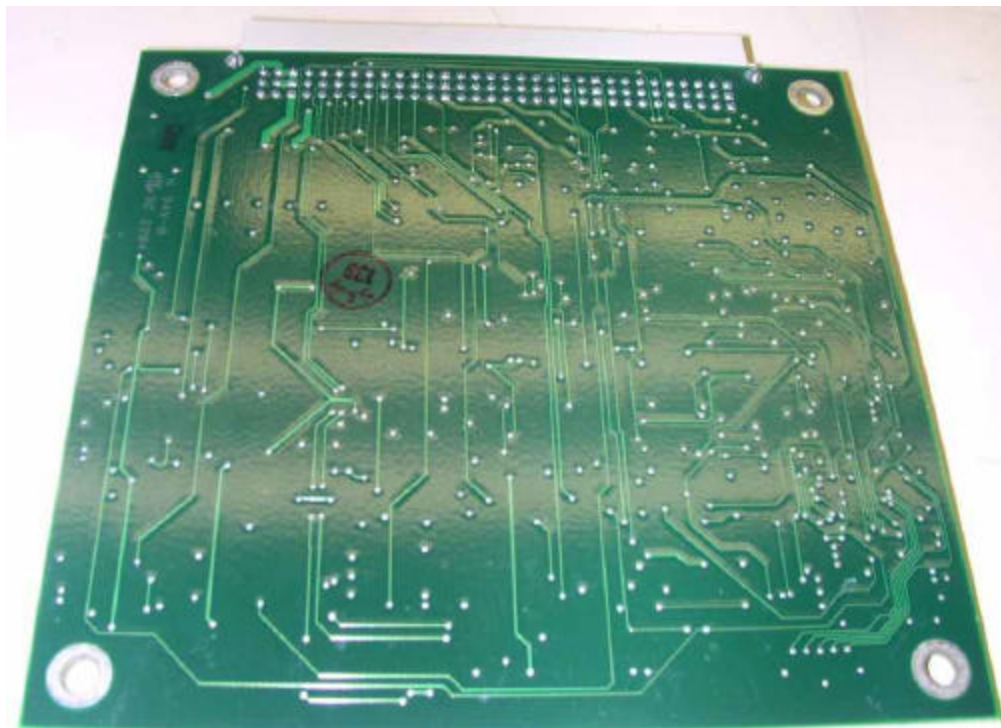


# Sitepro Analog Board: CB101070V1 Rev R6A

**Figure 17: Sitepro Analog Board Front**



**Figure 18: Sitepro Analog Board Back**

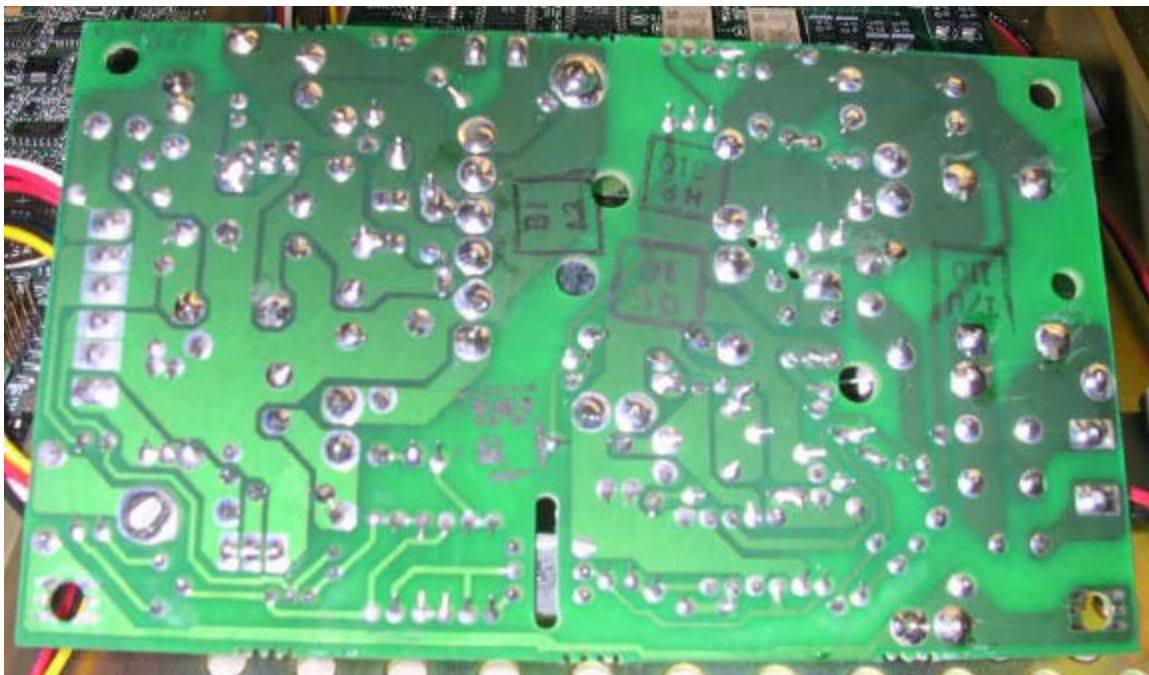


## SitePro Power Supply

**Figure 19: SitePro Power Supply Front**



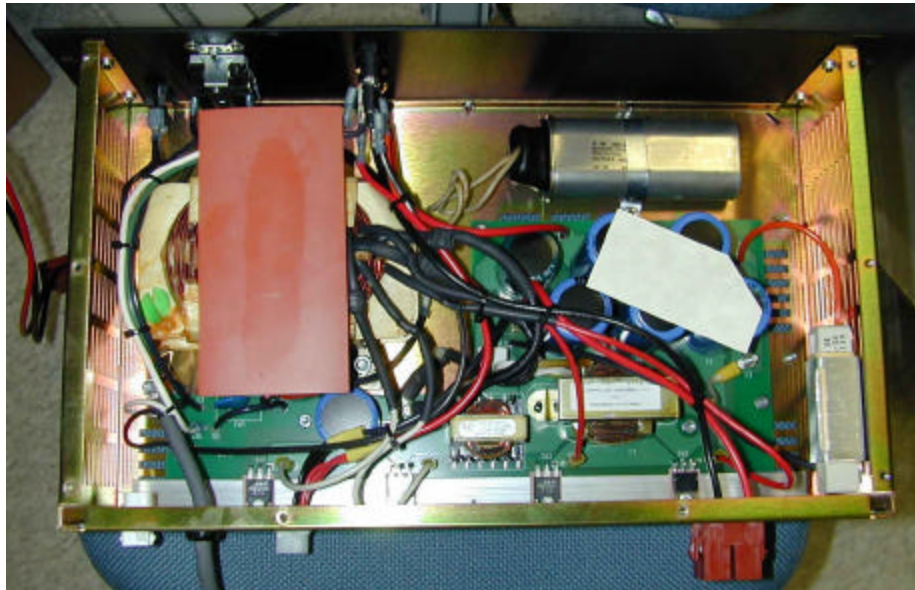
**Figure 20: SitePro Power Supply Back**



**Figure 1: Power Supply SN 31725960 Back View No Cover**



**Figure 2: Power Supply Top View No Cover**



**Figure 3: Power Supply Front View Cover On**

