

Rx Front End
19D902782G5 Rev. A Module Rx. Front End
Board: 90249065 Rev B

Figure 1: Rx Front End Front Cover



Figure 2: Rx Front End Top Side Cover

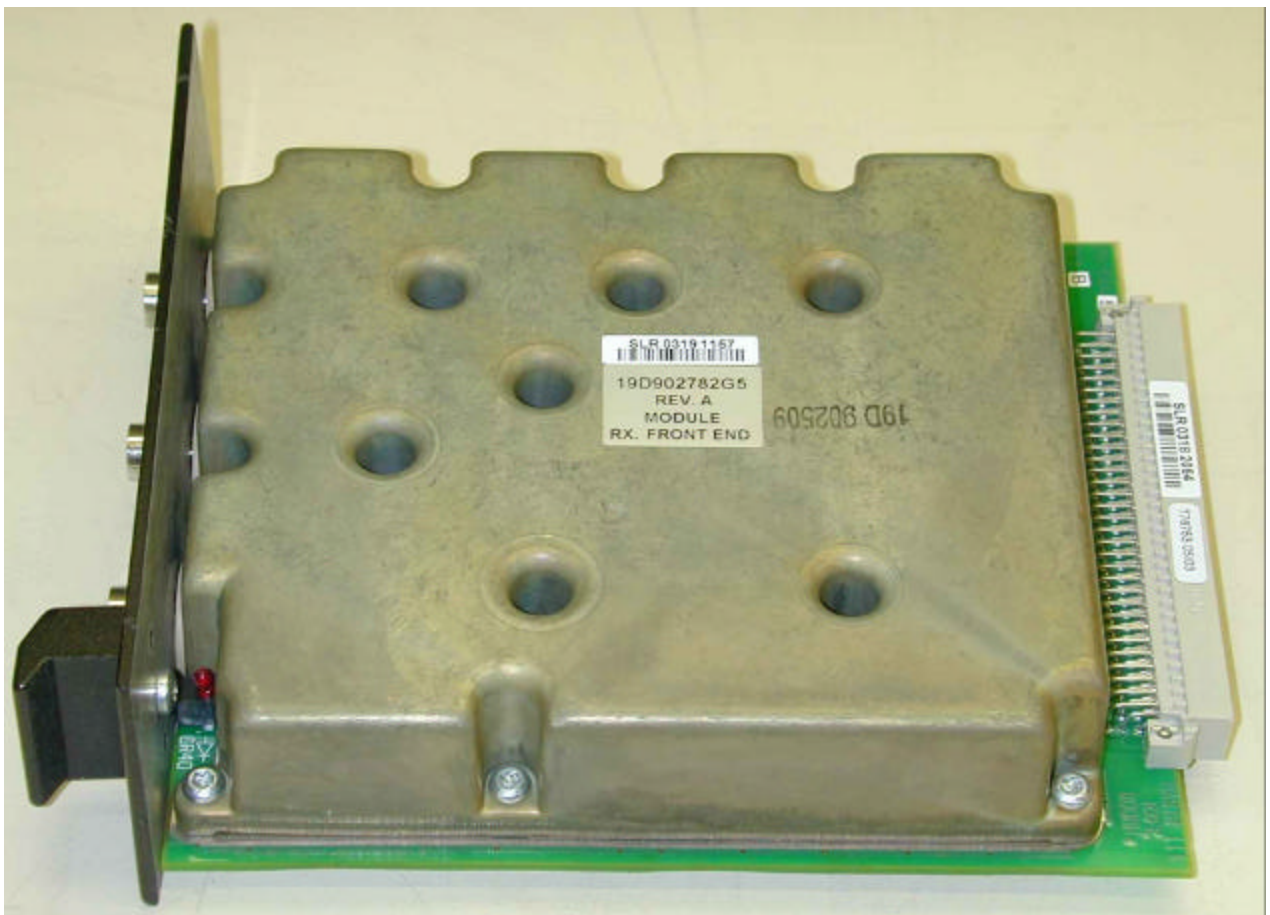


Figure 3: Rx Front End Back Connector

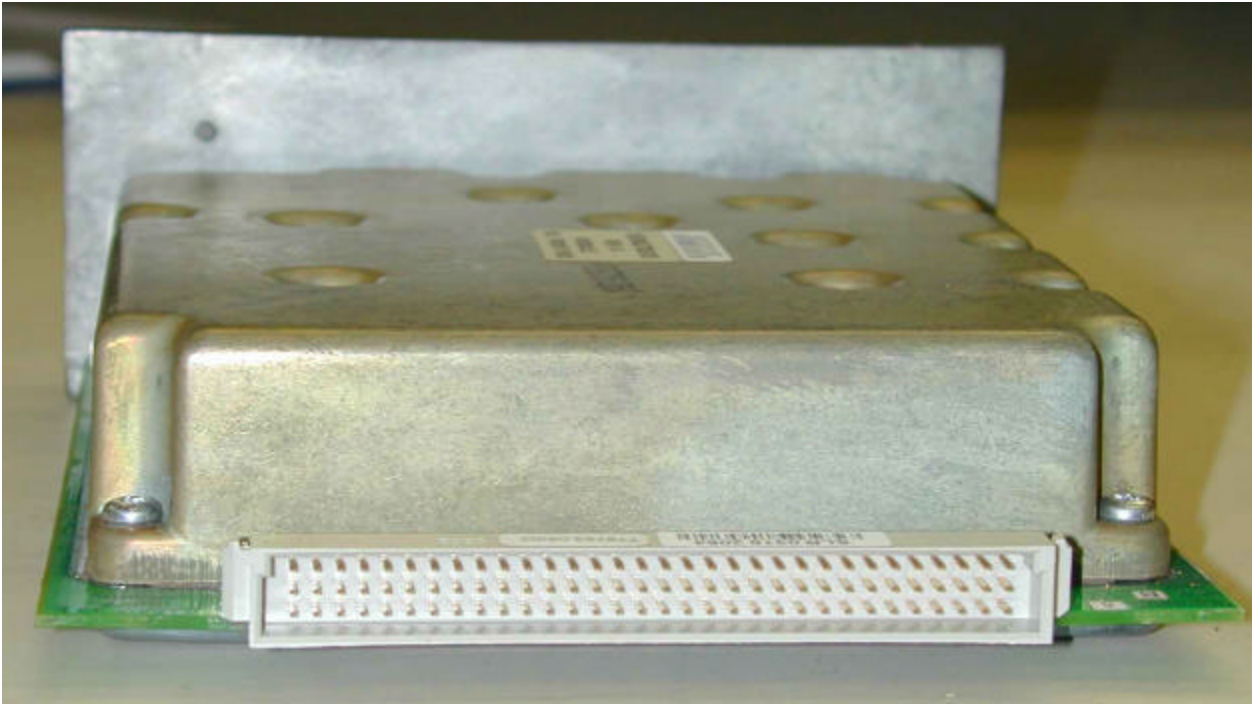


Figure 4: Rx Front End Bottom Side Cover

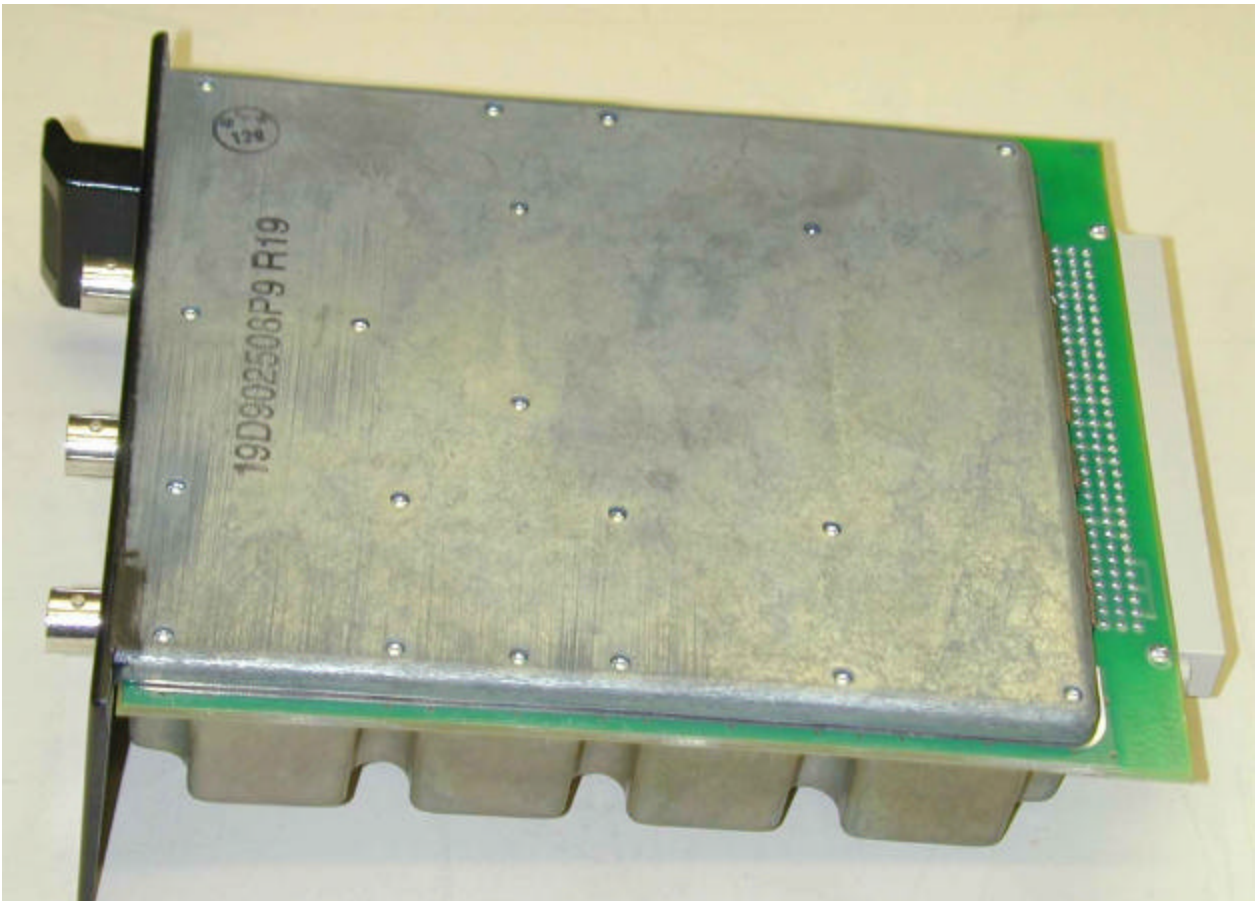


Figure 5: Rx Front End Top Side Board

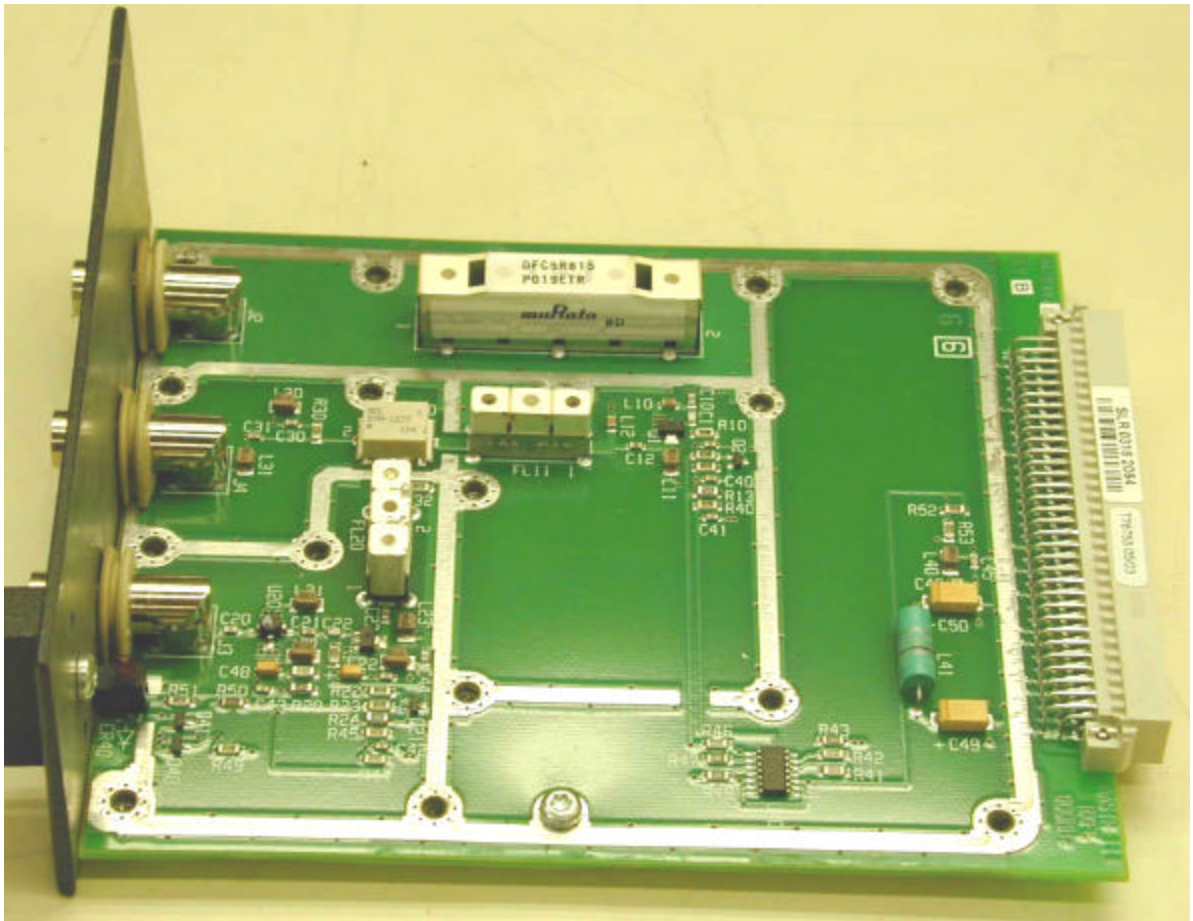
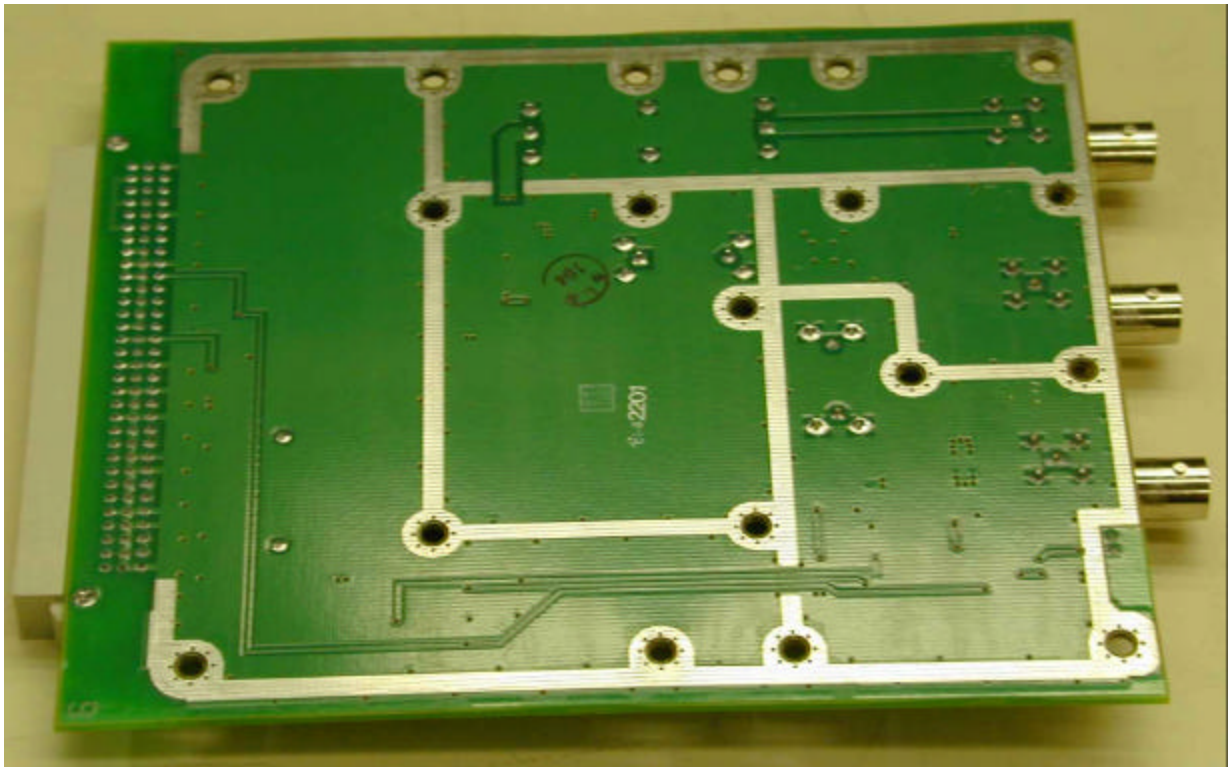


Figure 6: Rx Front End Back Side Board



Tx Synthesizer
EA101685VS P1A 2 Module Tx Syn.
Board: CB1011132V5 Rev P1A2

Figure 7: Tx Synthesizer Front Cover



Figure 8: Tx Synthesizer Top Side Cover



Figure 9: Tx Synthesizer Back Connector

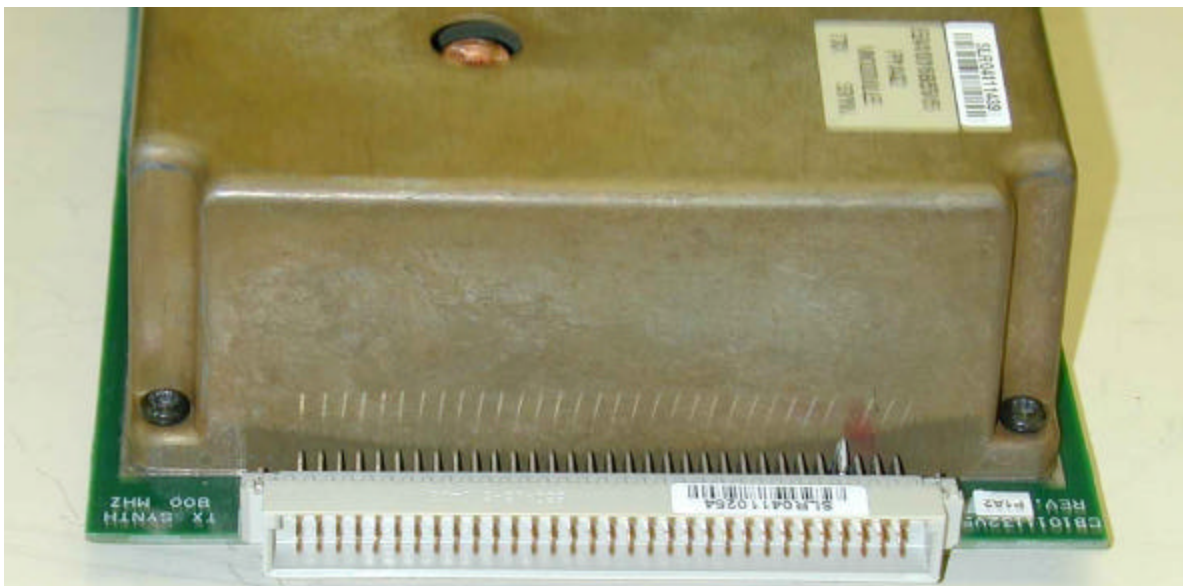


Figure 10: Tx Synthesizer Back Cover

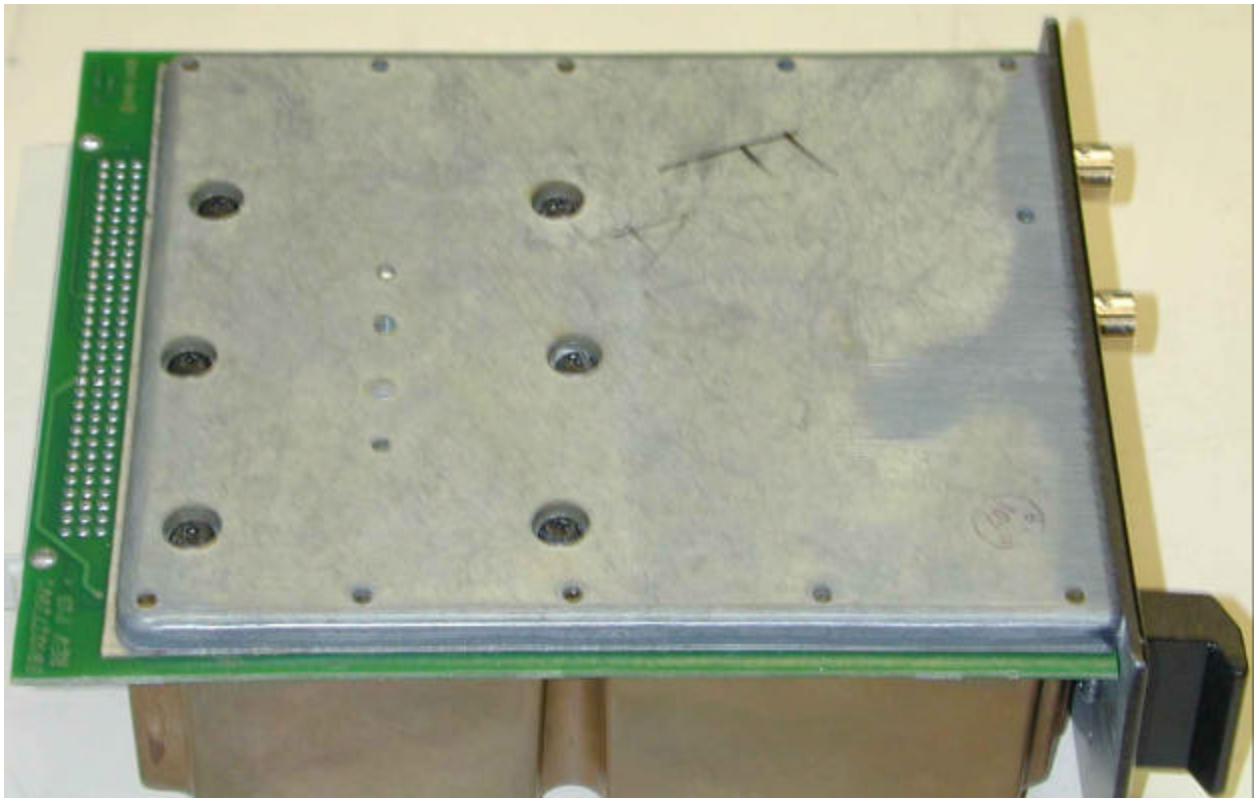


Figure 11: Tx Synthesizer Top View of Board with Inner Metal Cover

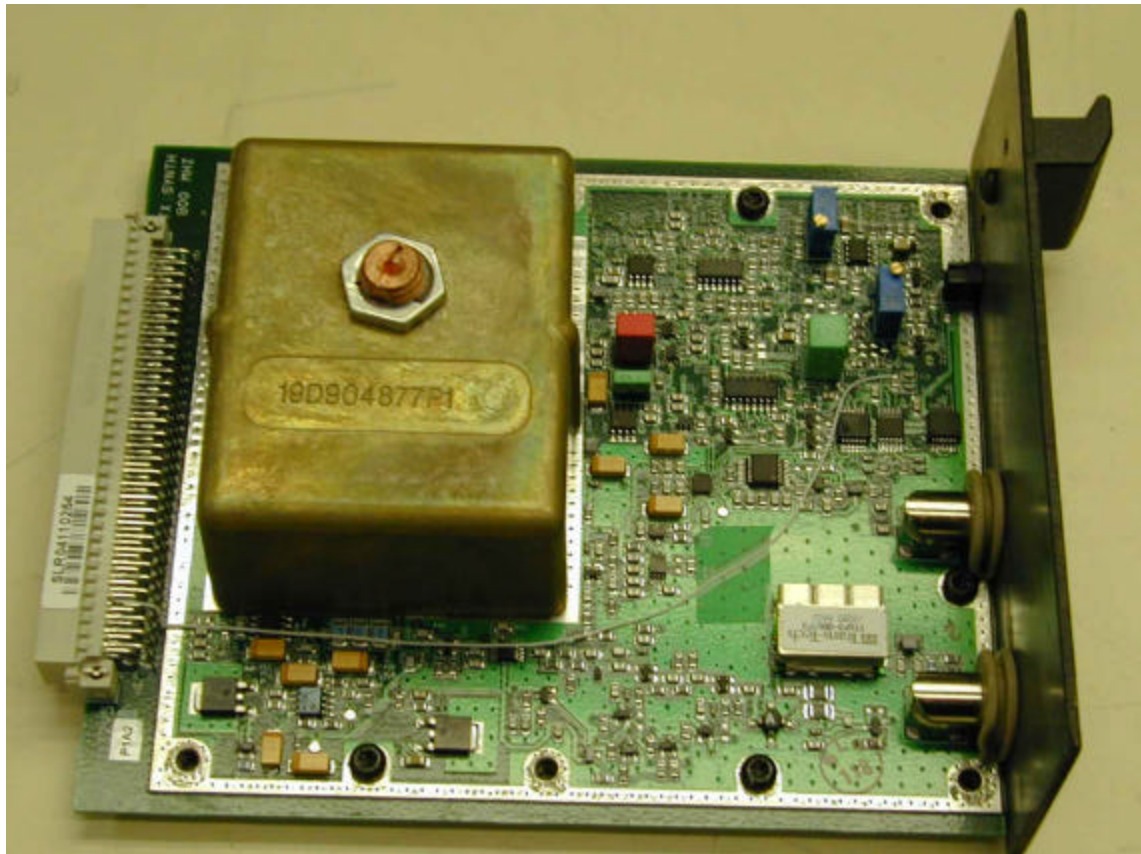
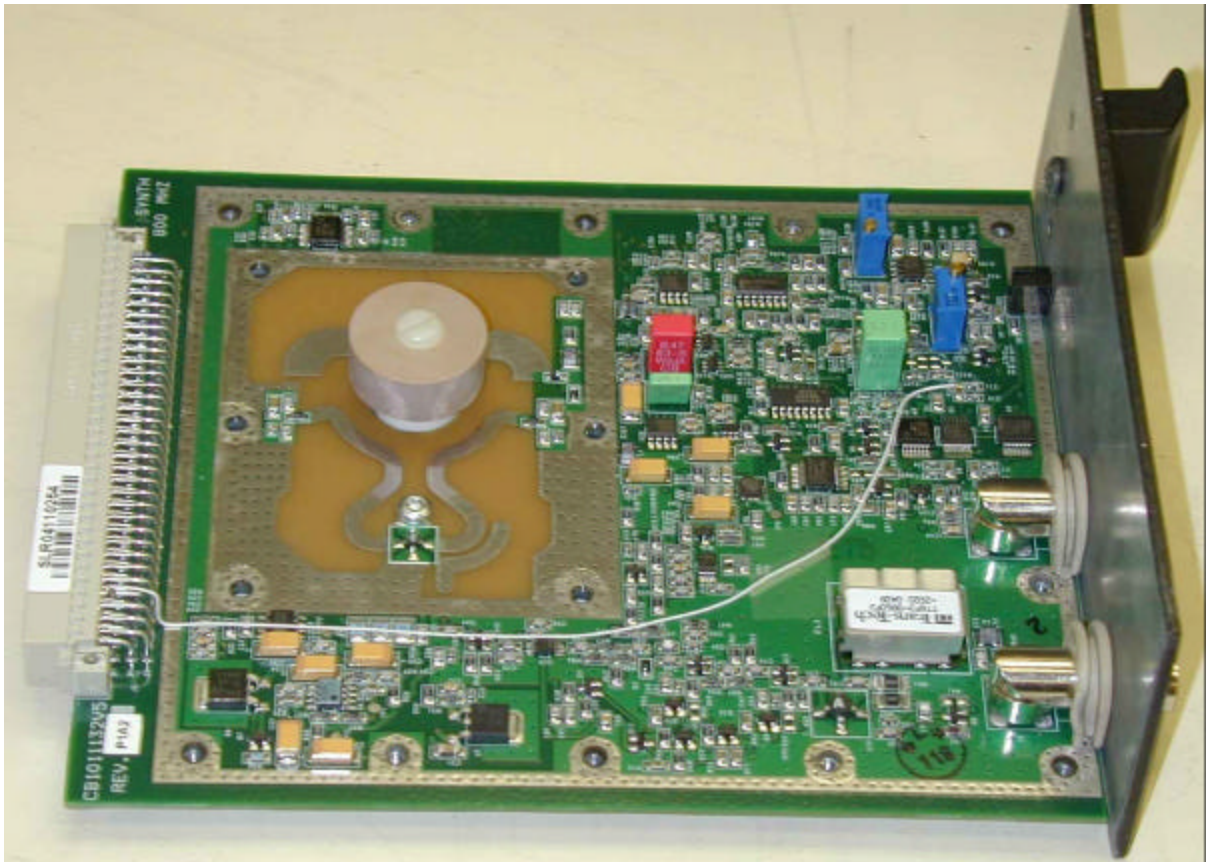


Figure 12: Tx Synthesizer Top View of Board Fully Exposed



Rx Synthesizer EA101684V5 P1A2 Module Rx Syn
Board: CB101131V5 Rev P1A2

Figure 13: Rx Synthesizer Front Cover



Figure 14: Rx Synthesizer Top Cover



Figure 15: Rx Synthesizer Back Connector



Figure 16: Rx Synthesizer Bottom Cover

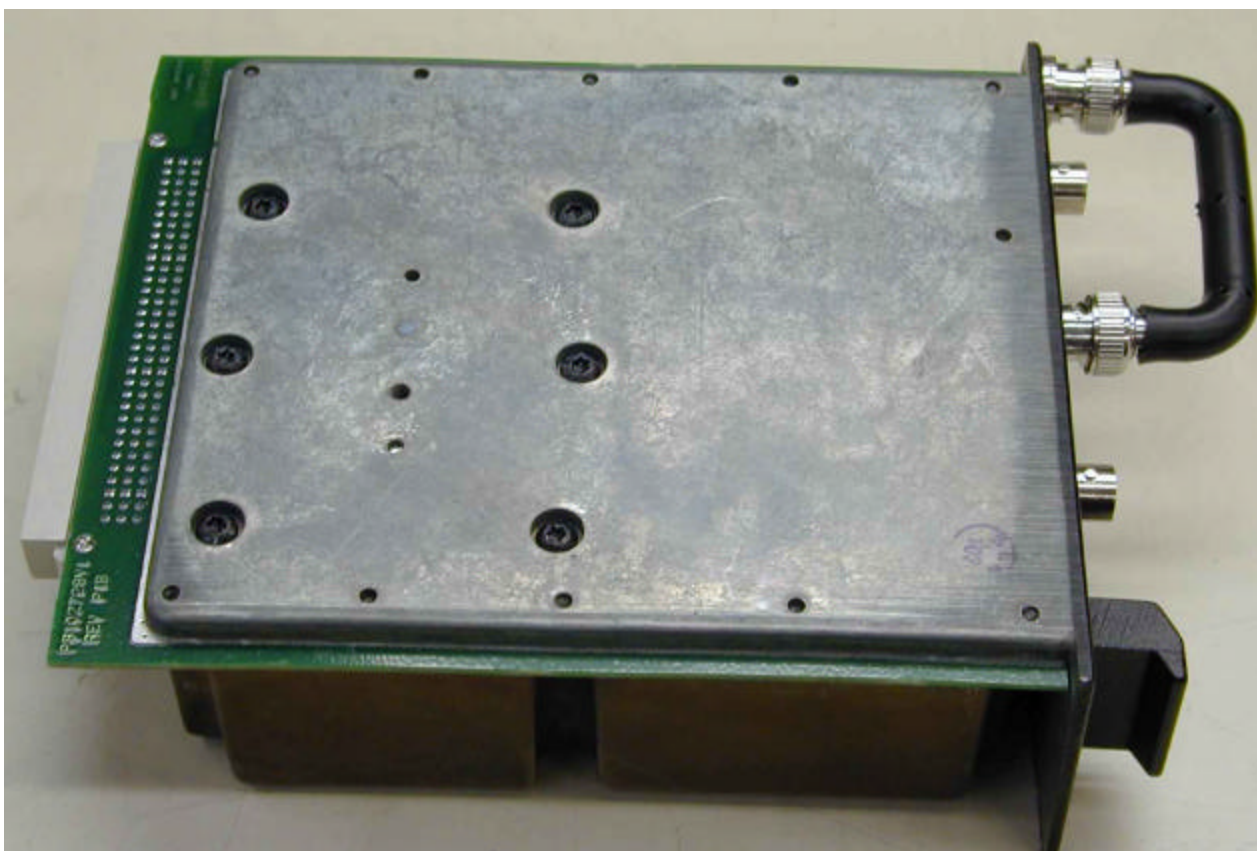


Figure 17: Rx Synthesizer Top of Board with Inner Metal Cover On

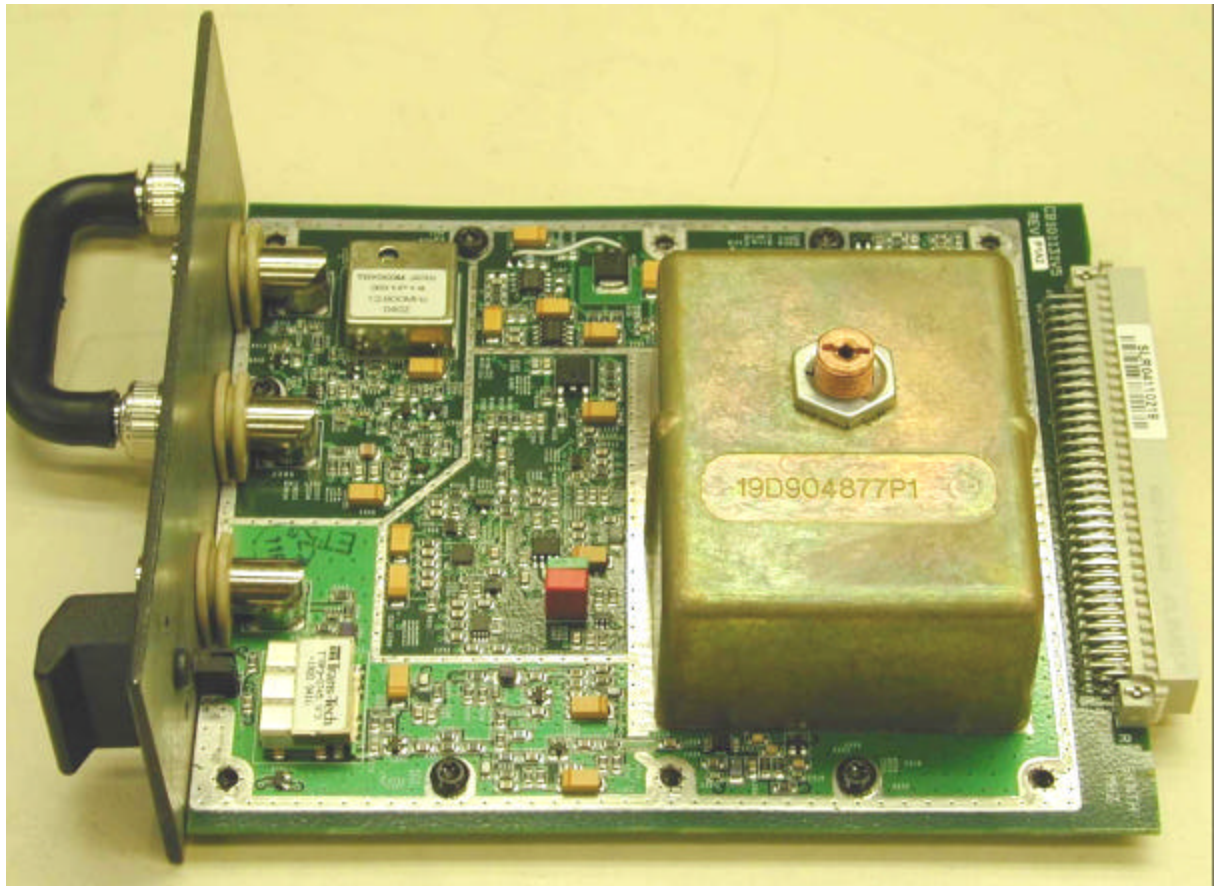
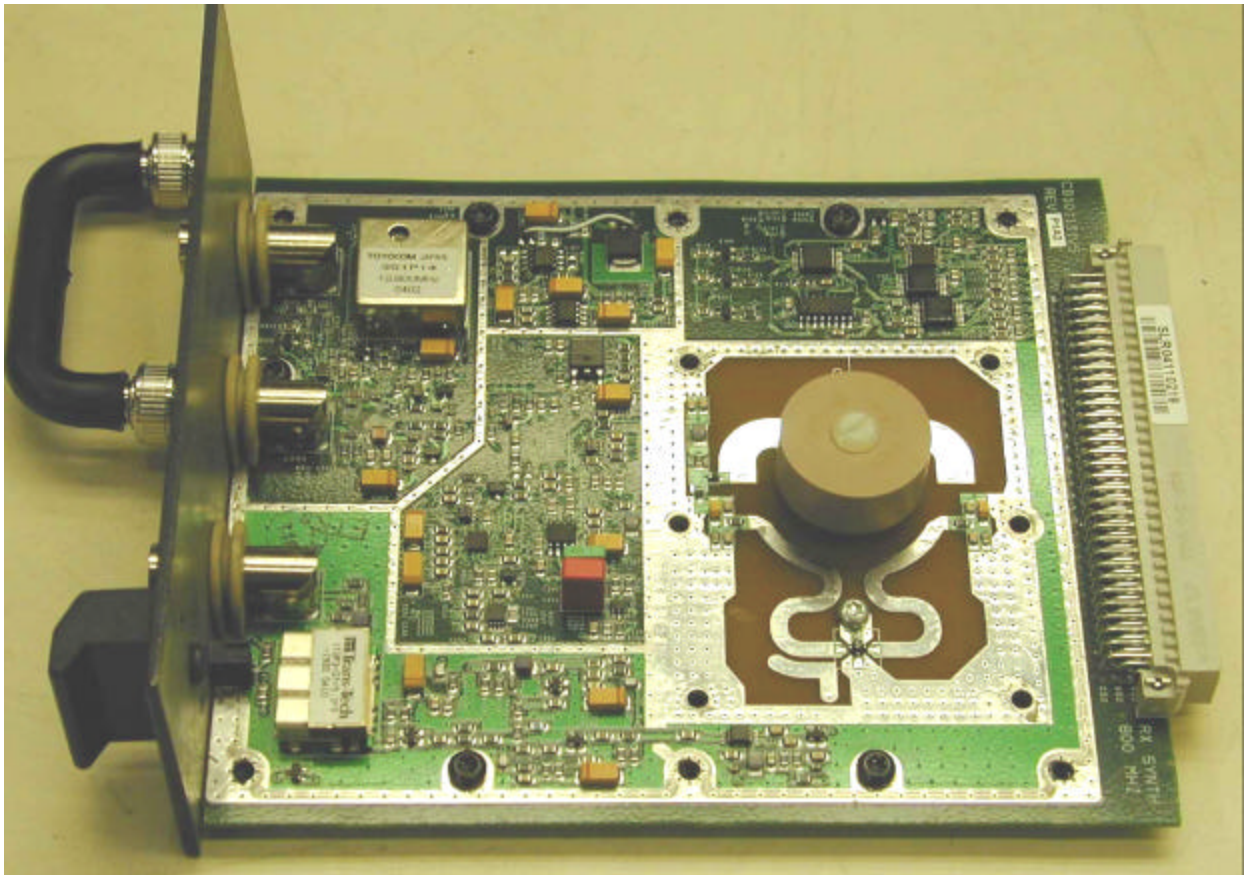


Figure 18: Rx Synthesizer with Entire Board Exposed



Interior Photographs of Mastr III / SitePro Trunking Base Station Radio –
Rx IF Module

FCC ID: OWDTR-0036-E

September 7, 2004

Table of Figures

Figure 1 - Rx IF overall.....	3
Figure 2 - Rx IF board top	4
Figure 3 - Rx IF board bottom	5



Figure 1 - Rx IF overall

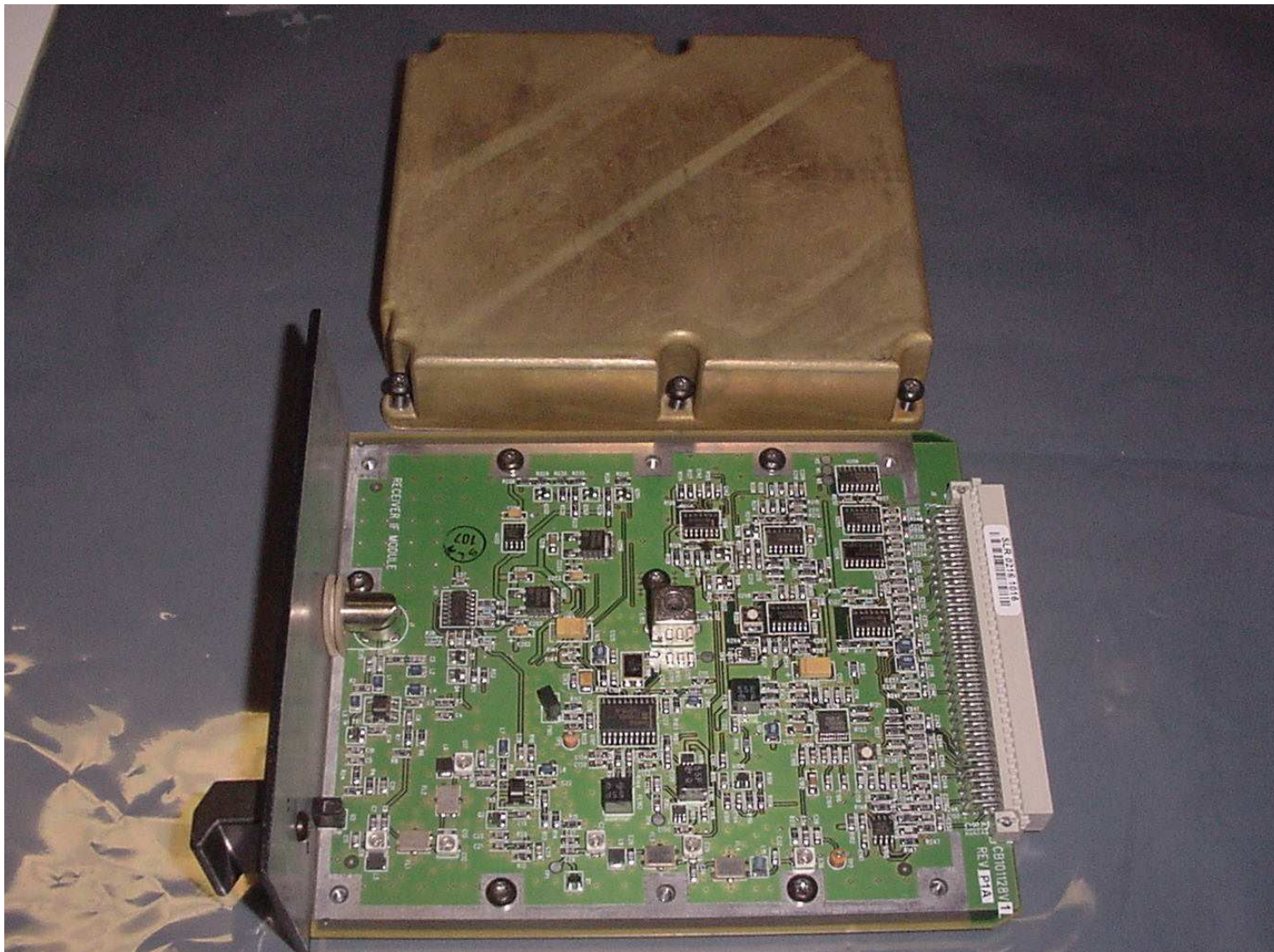


Figure 2 - Rx IF board top

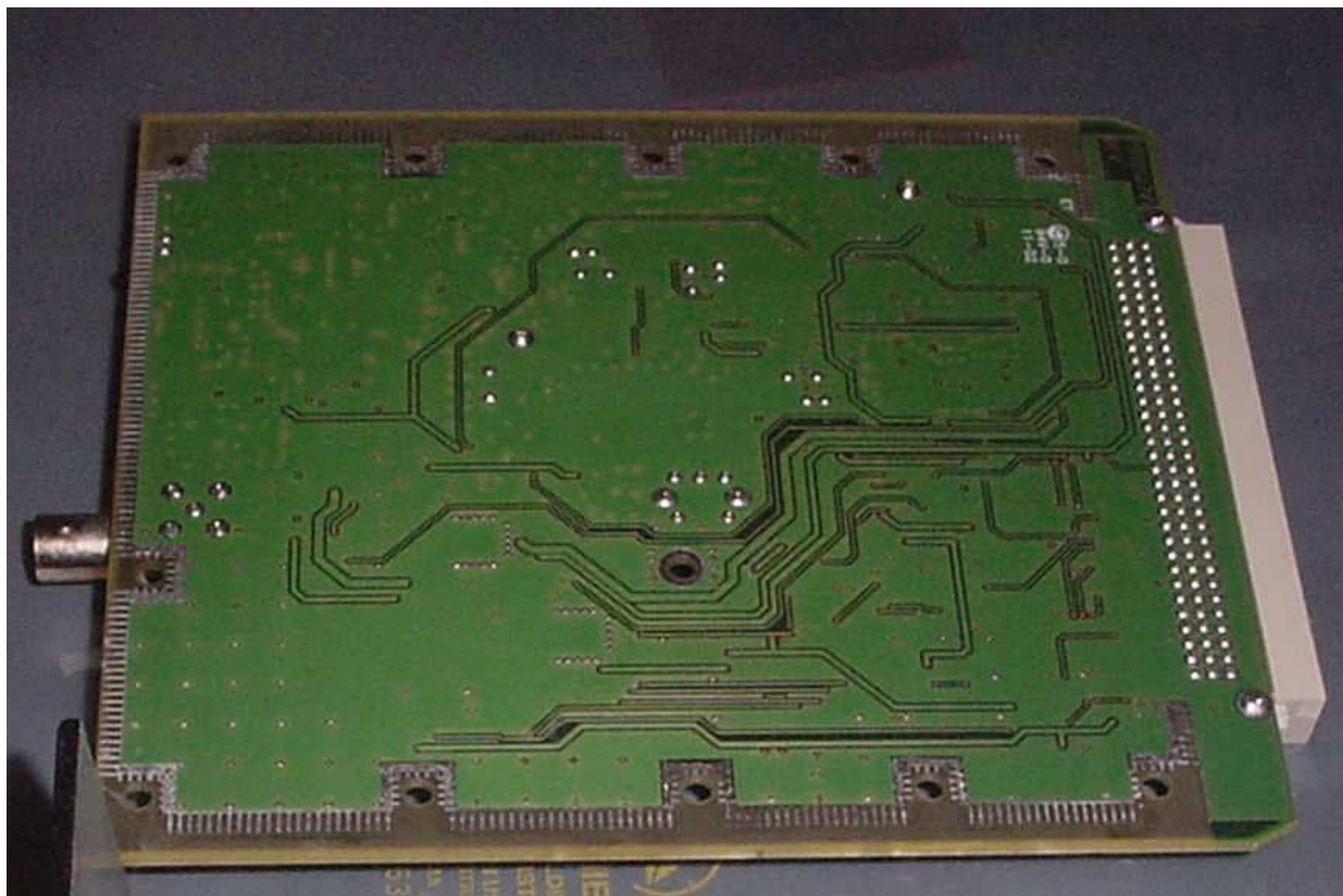
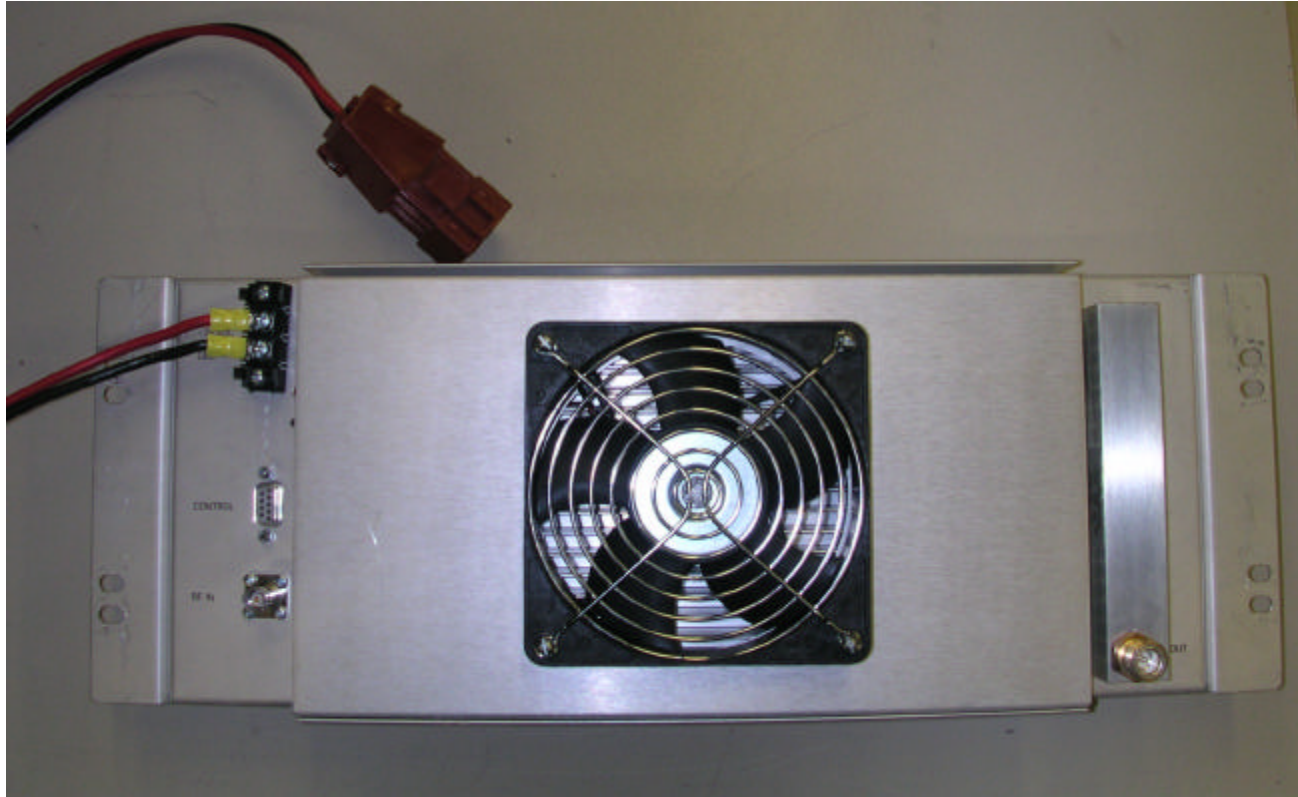


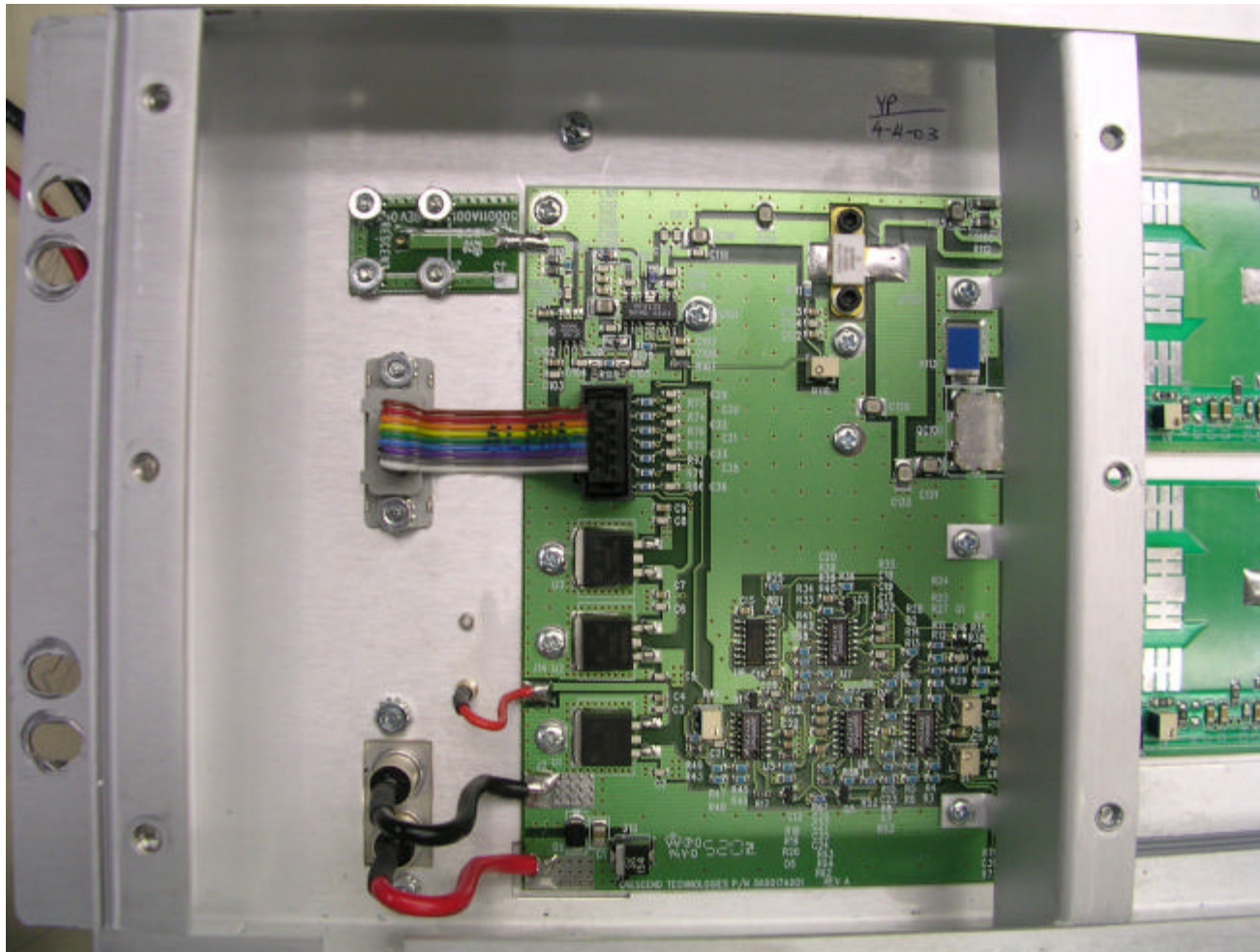
Figure 3 - Rx IF board bottom



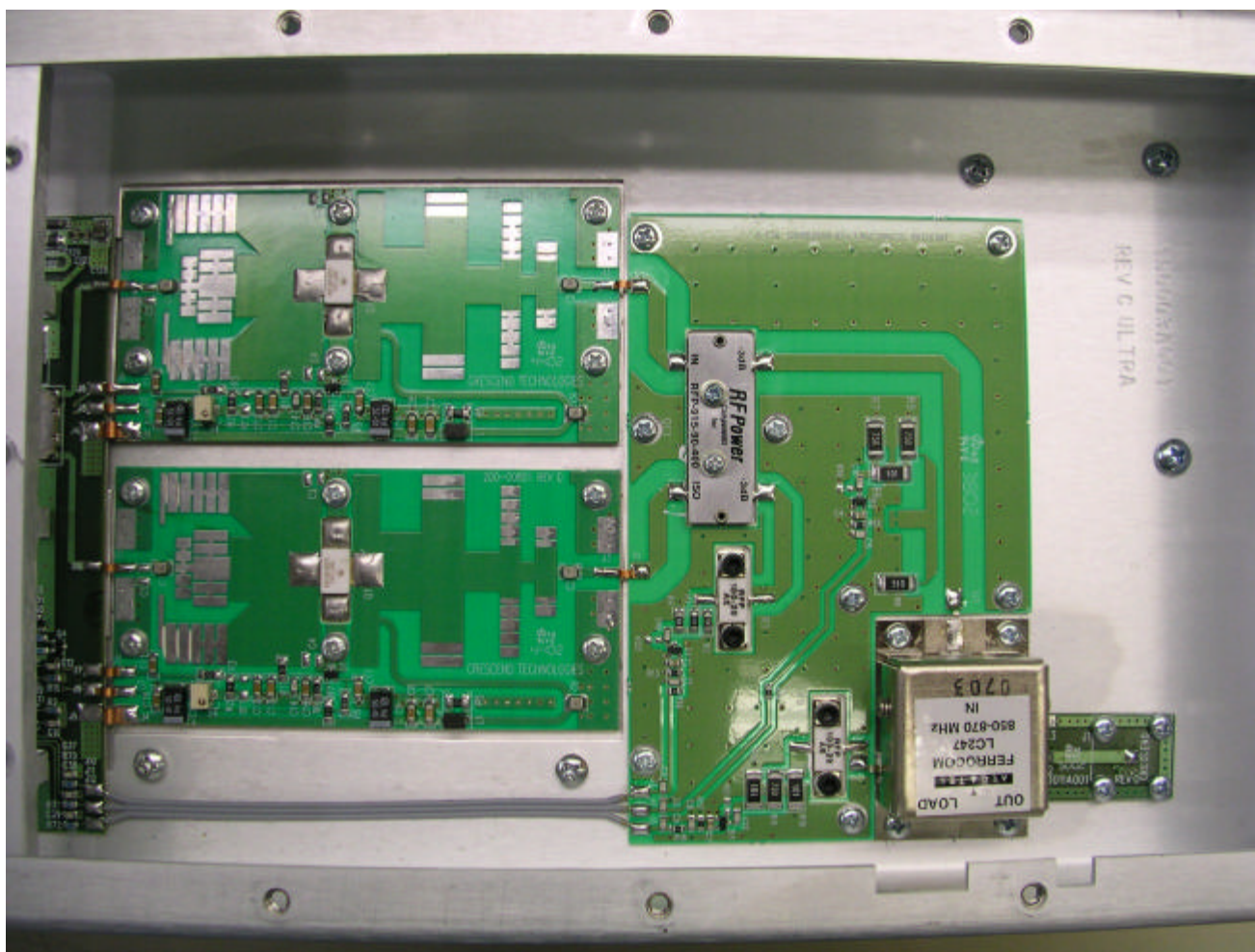
PA External picture #1
PA external picture



PA external picture #2



PA internal picture #1



PA internal picture #2