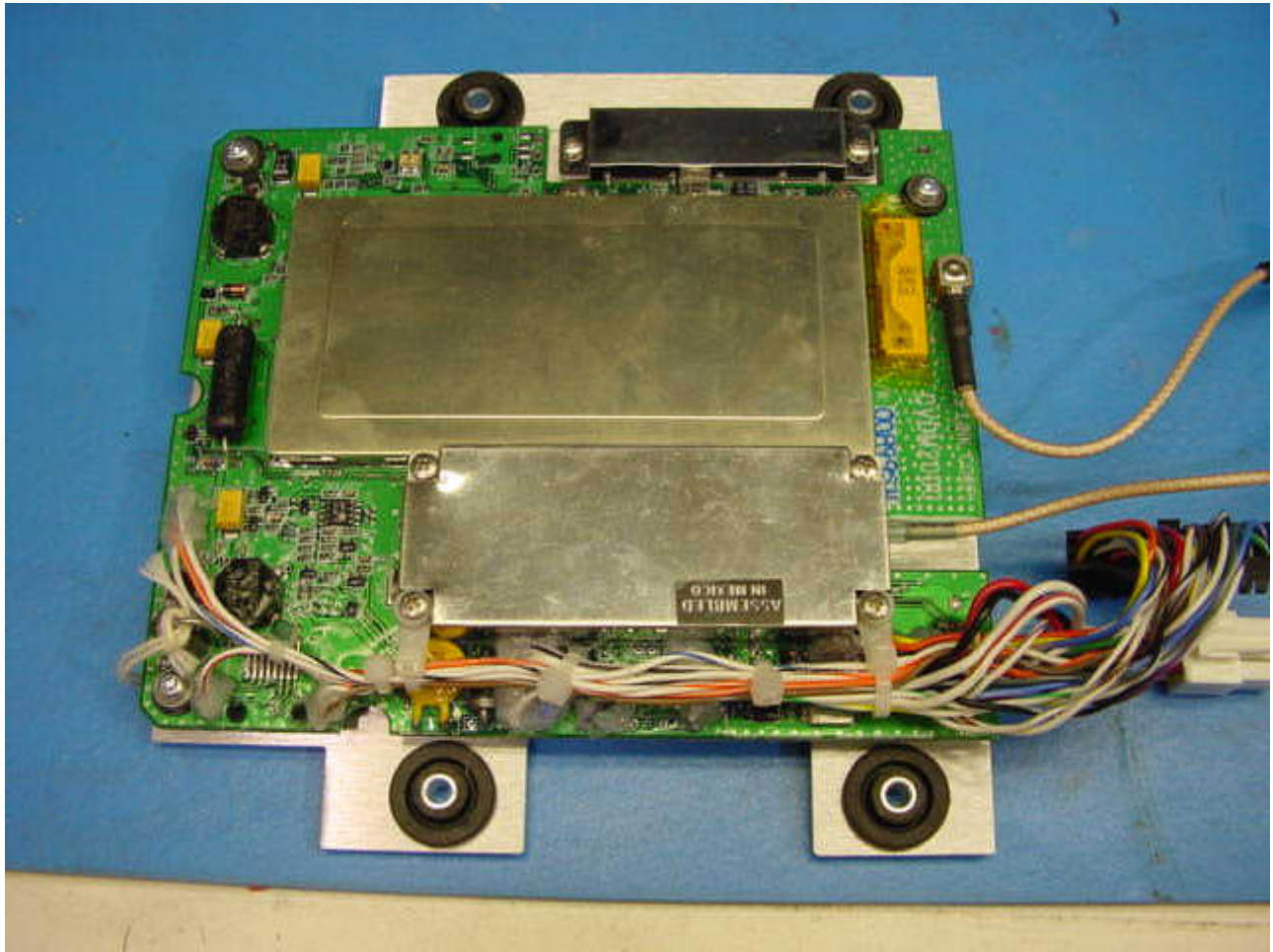
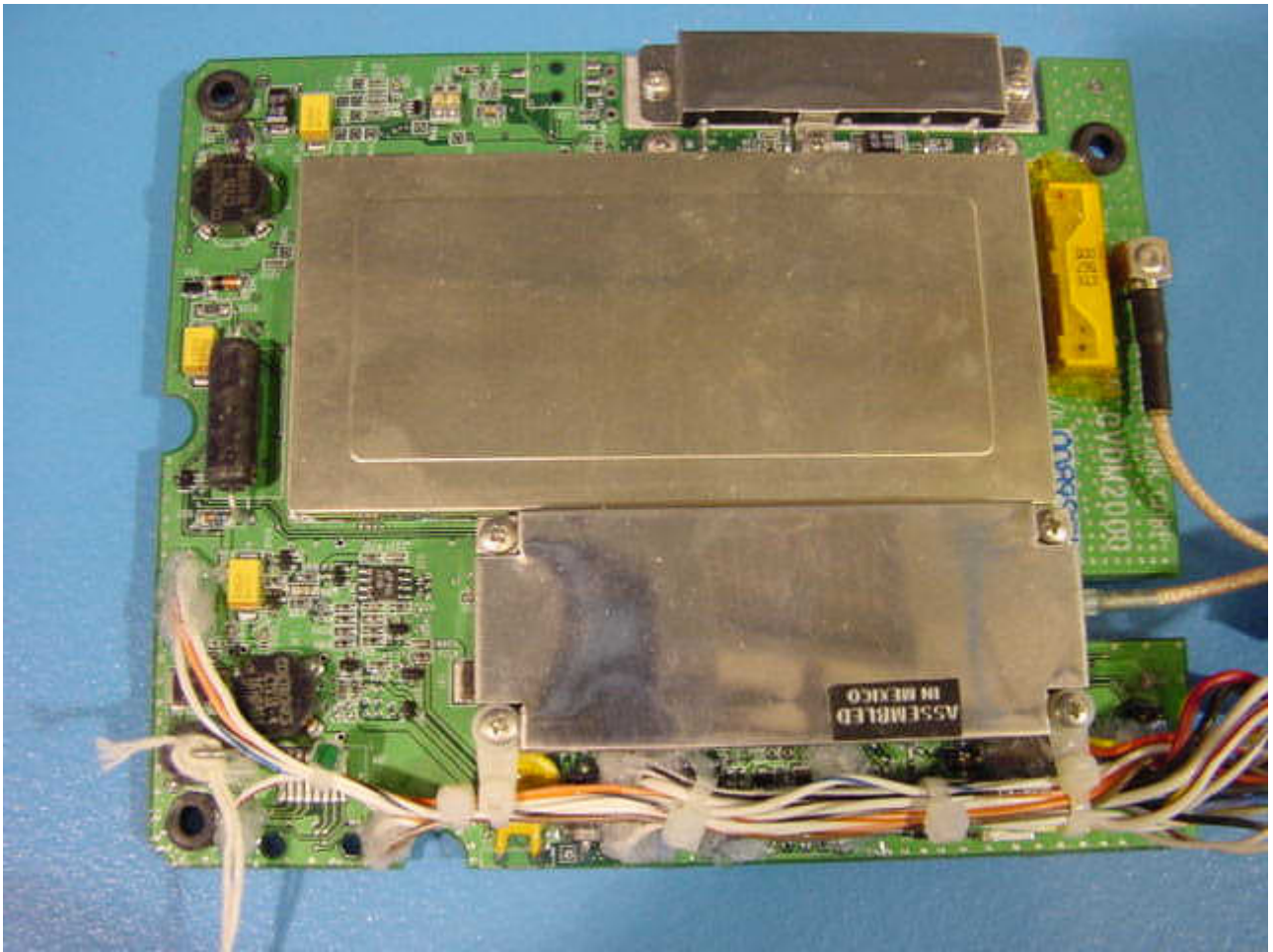


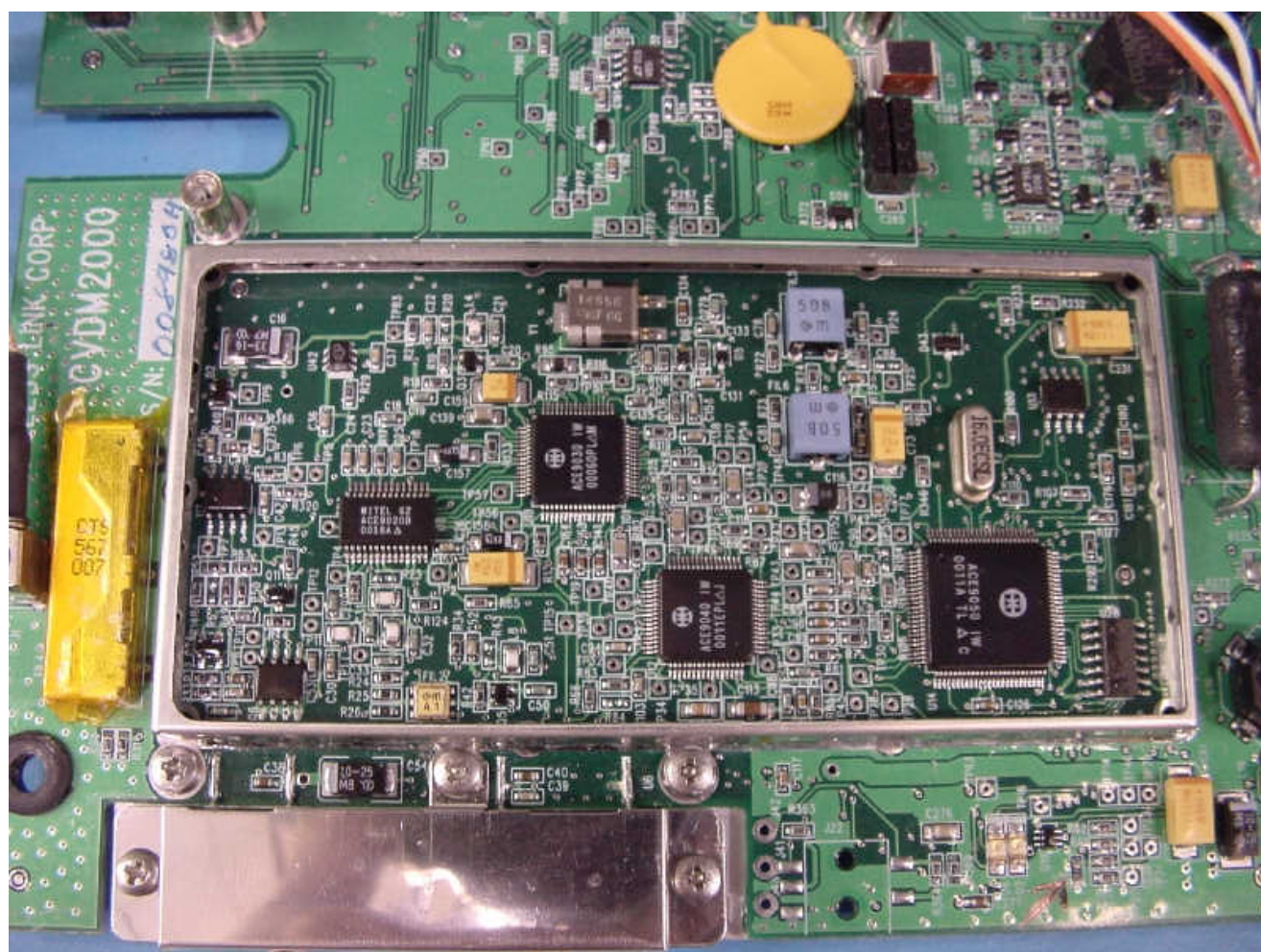
JDLink with top half of enclosure removed



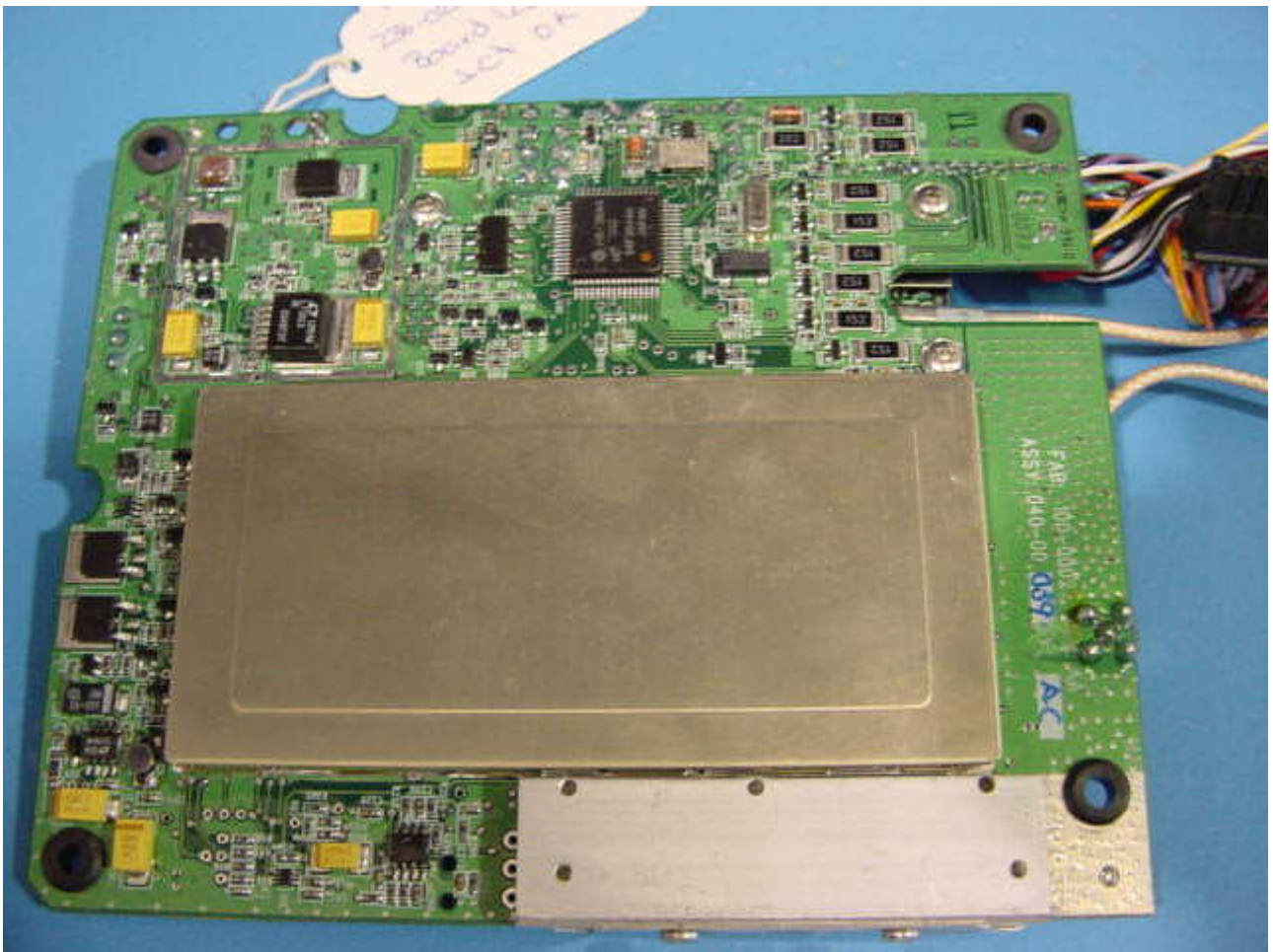
Communications Interface (Modem & GPS) PCB assembly with mounting plate



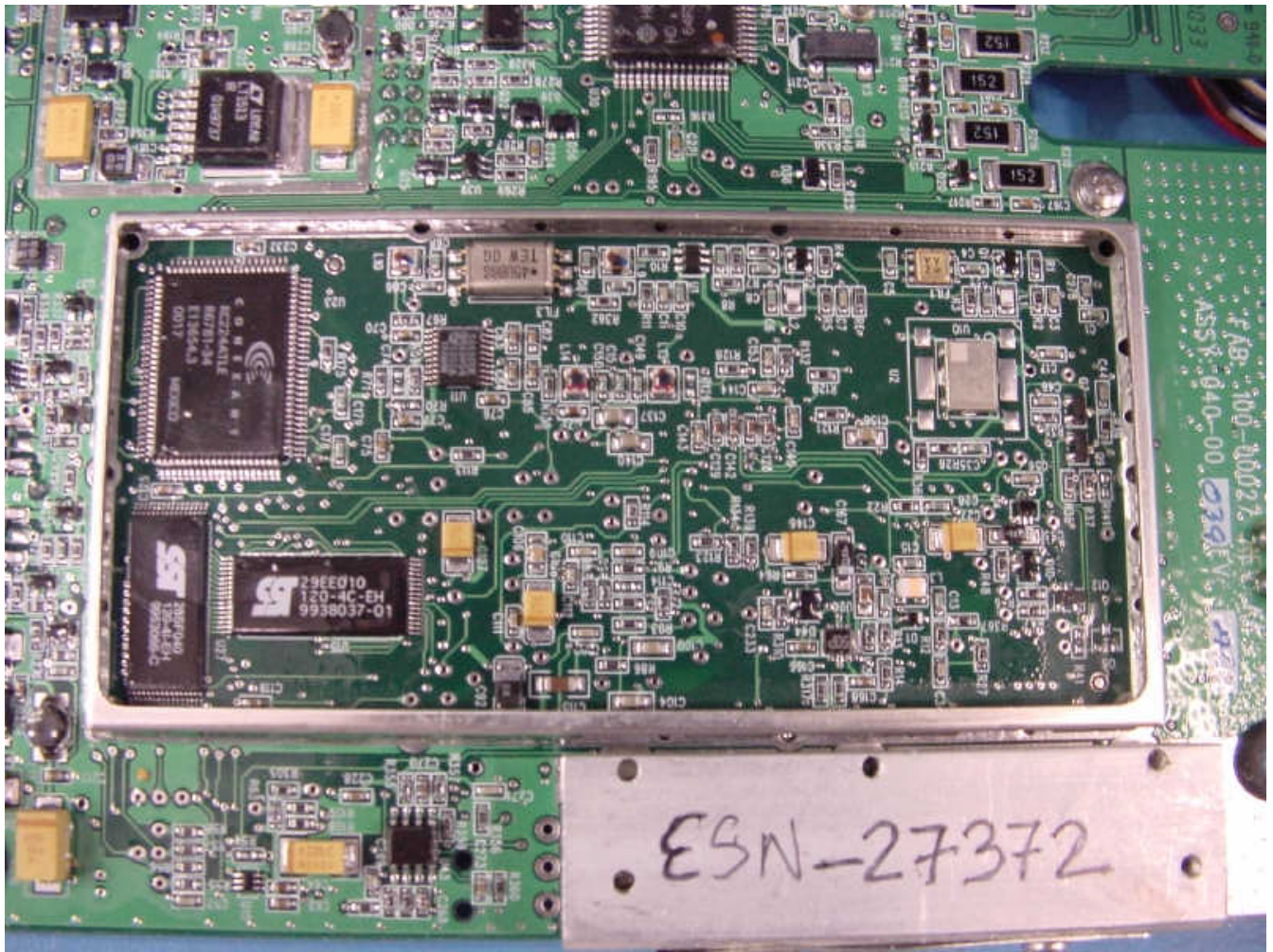
Communications Interface PCB assembly (top)



Communications Interface PCB with RF Shield removed (top)



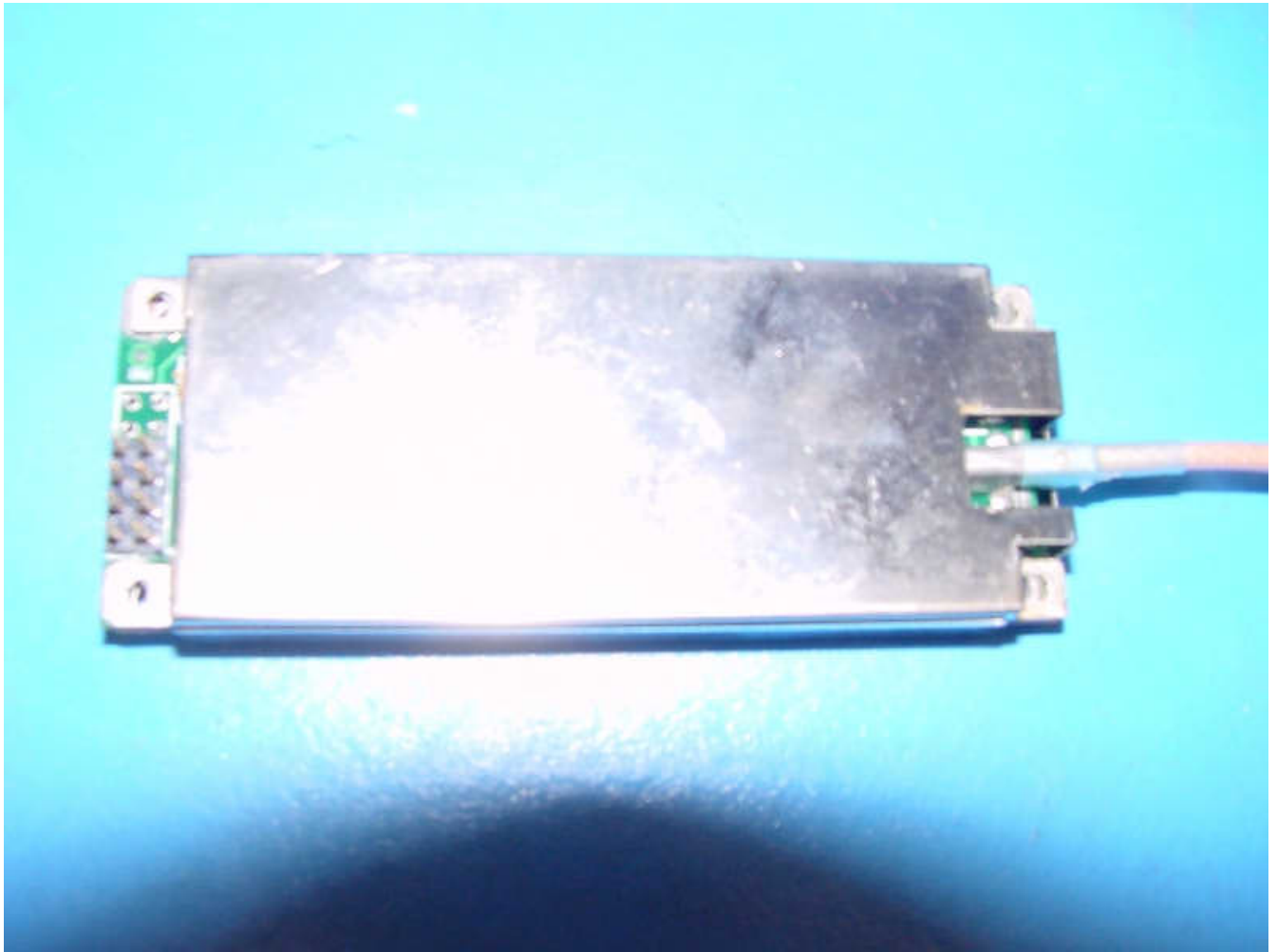
Communications Interface PCB assembly (bottom)



Communications Interface PCB with RF shield removed (bottom)



GPS module (top)



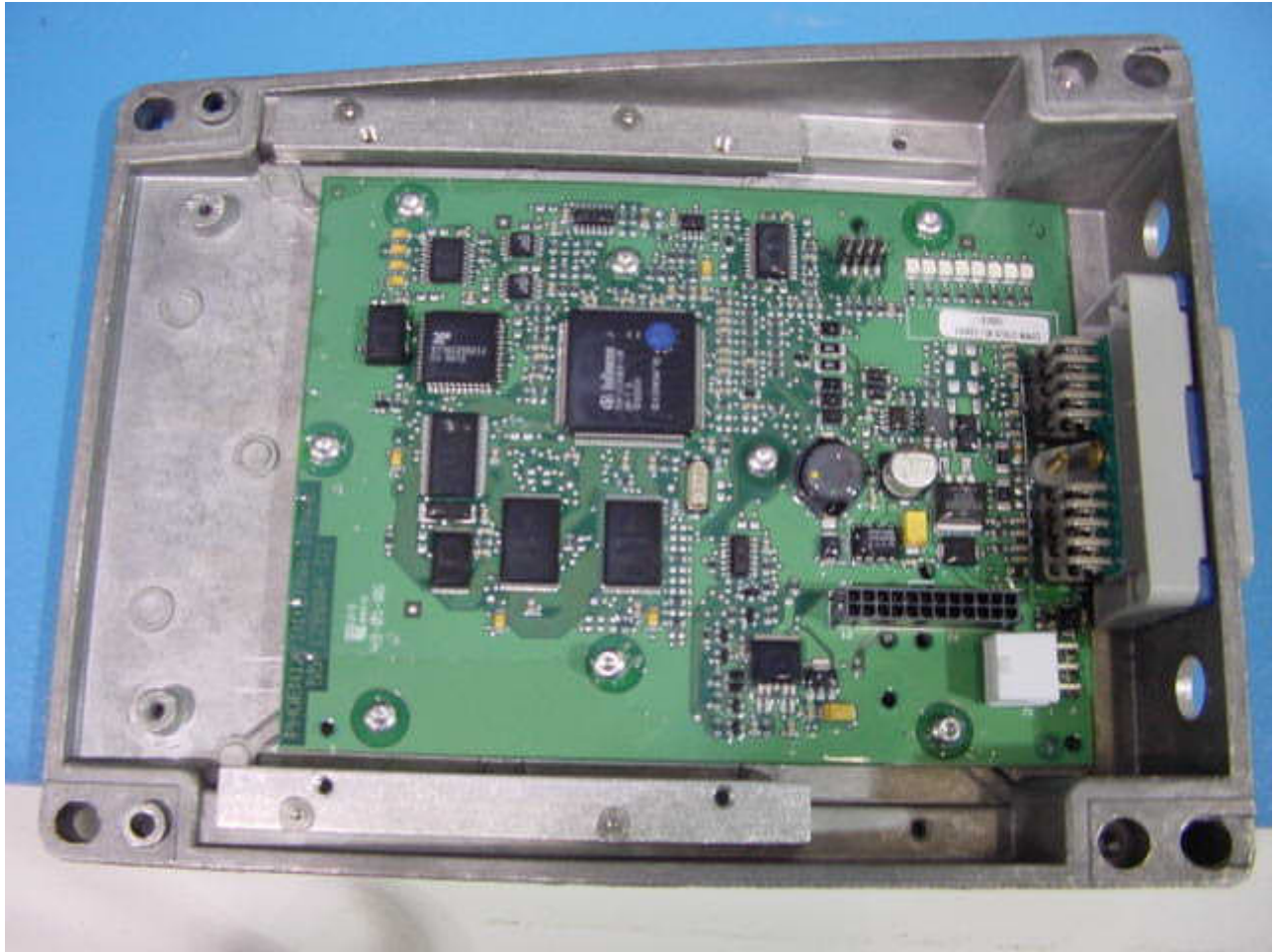
GPS module (bottom)



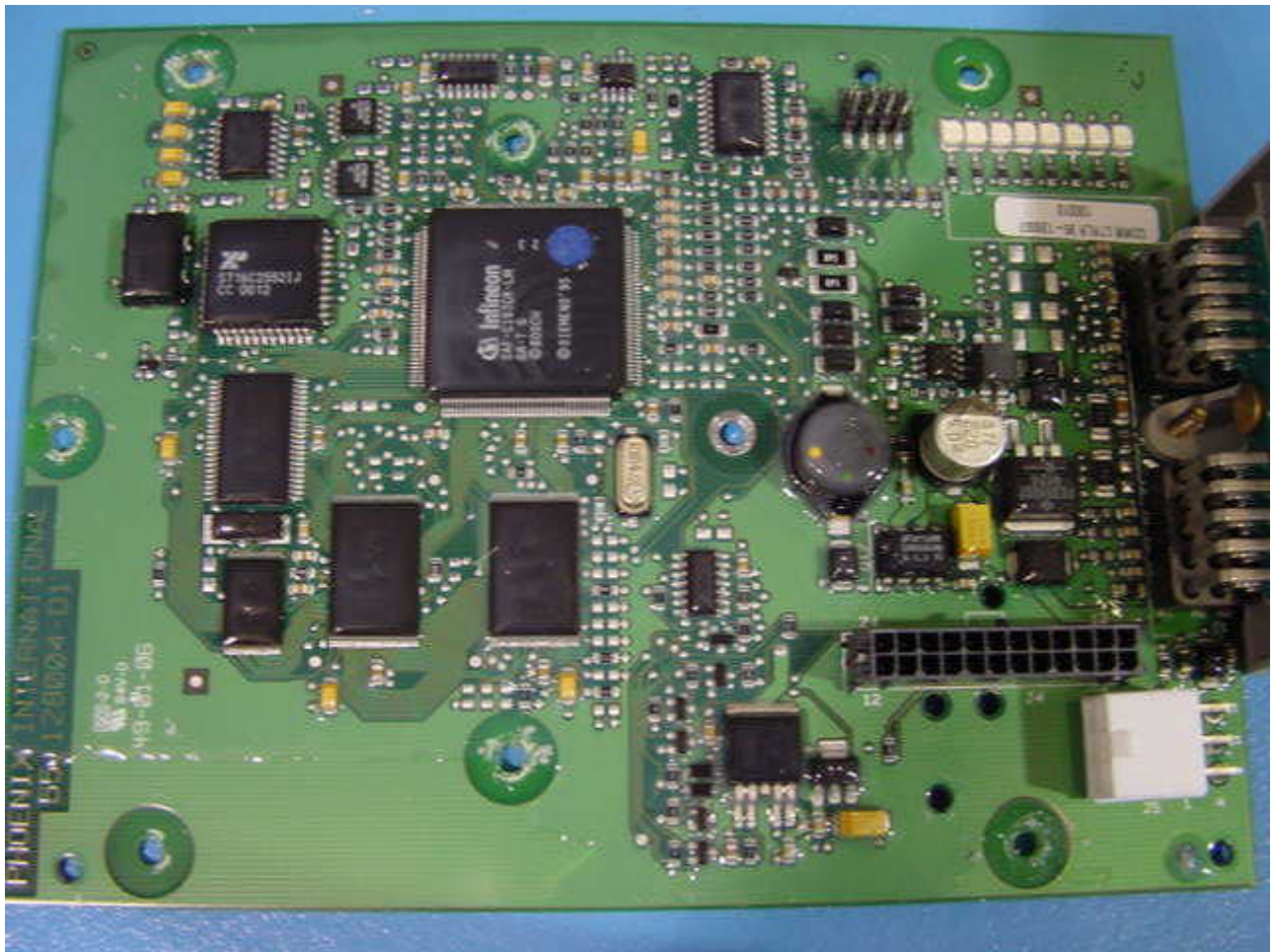
GPS module with RF shield removed (top)



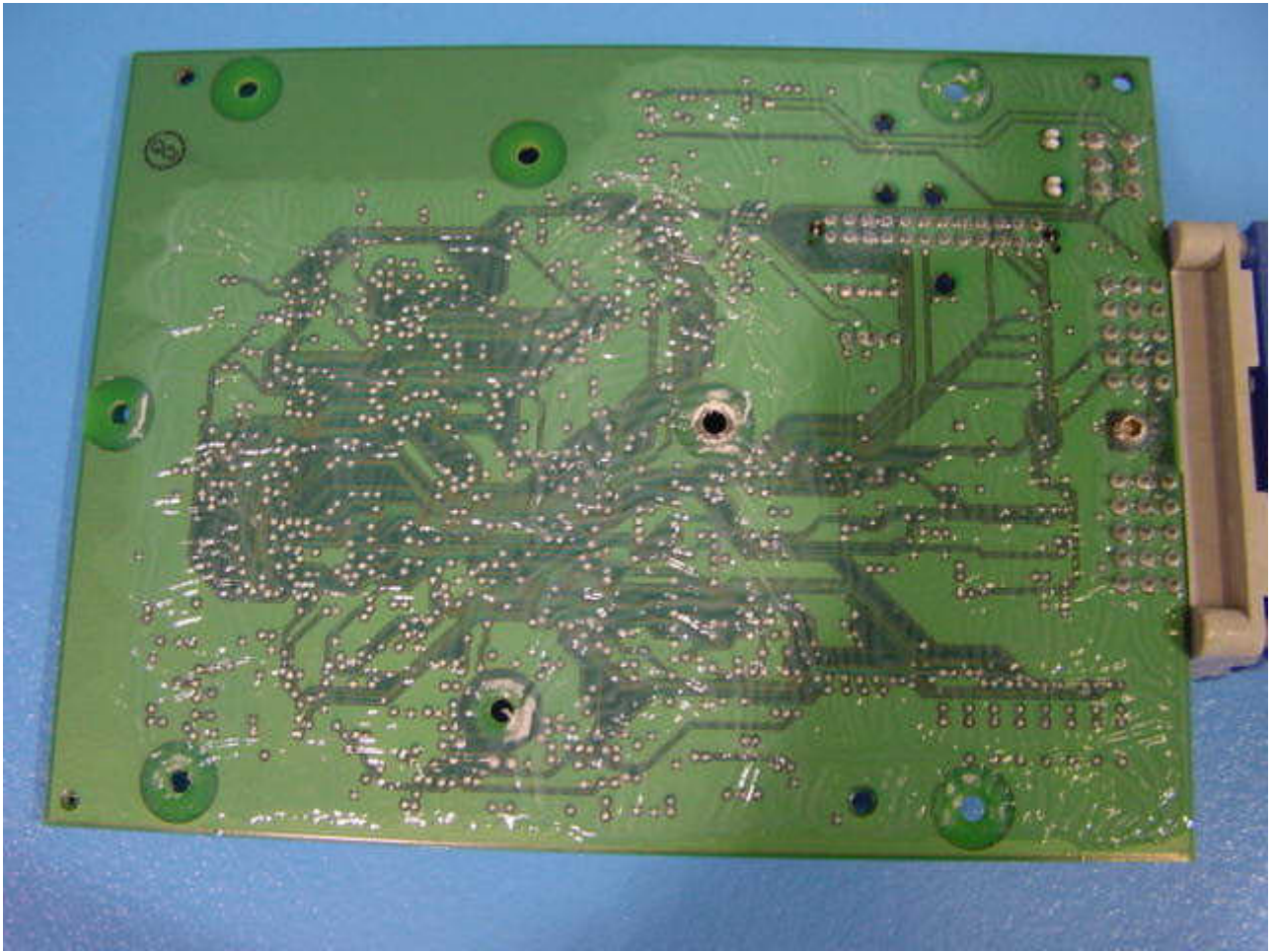
GPS module with RF shield removed (bottom)



Machine Interface PCB in enclosure with Communications Interface PCB removed

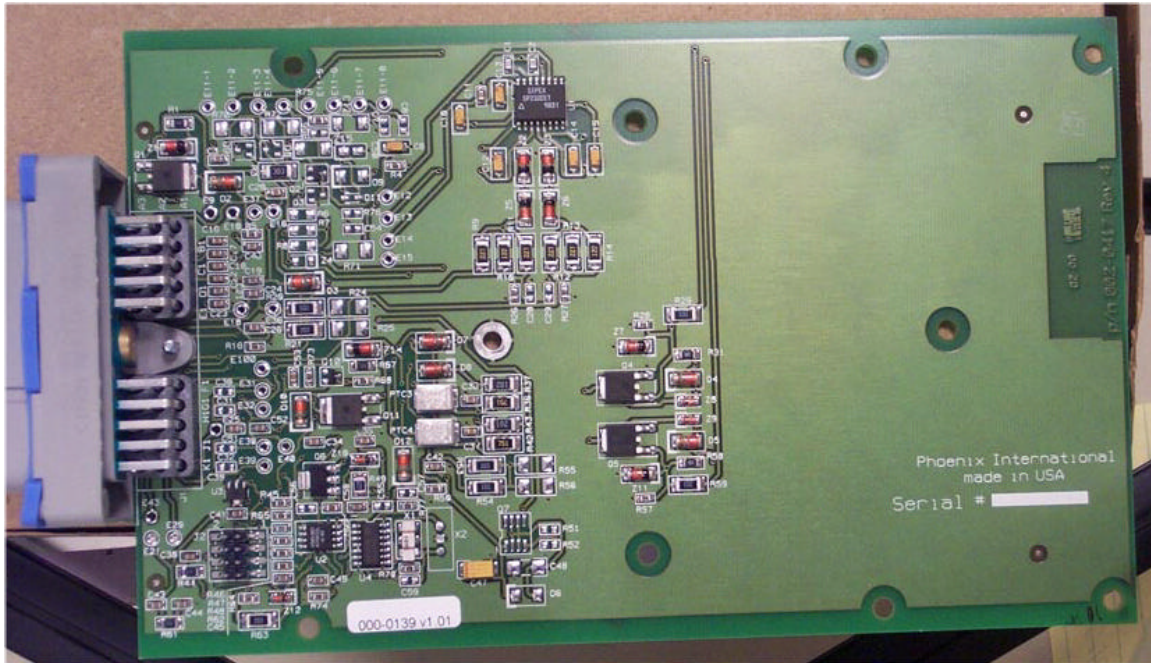


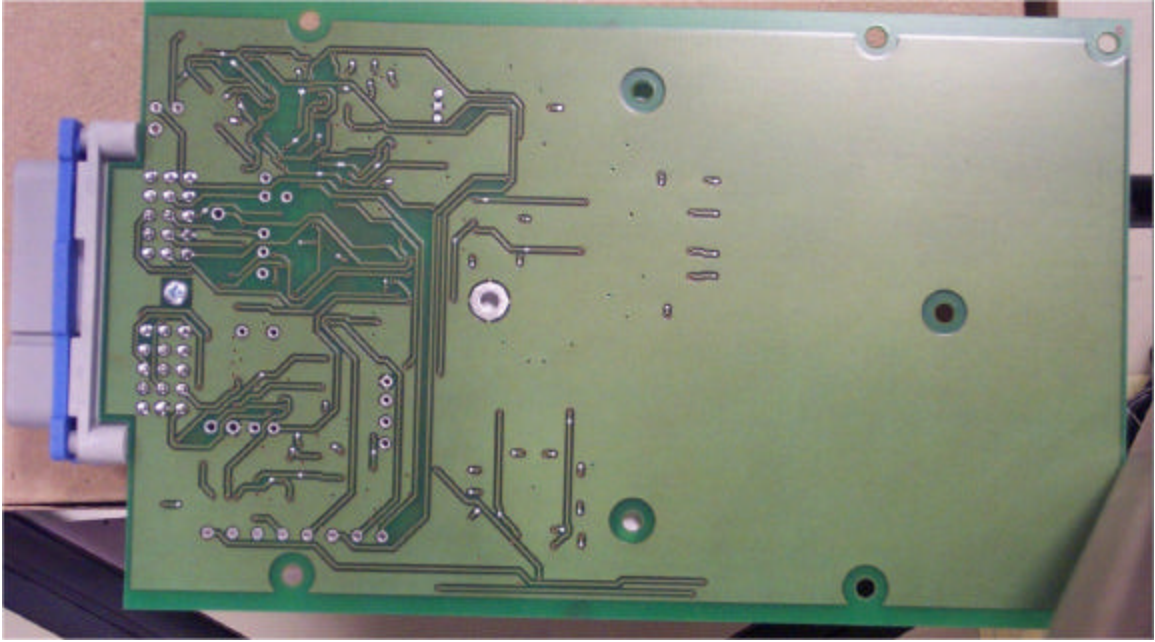
Machine Interface PCB (top)

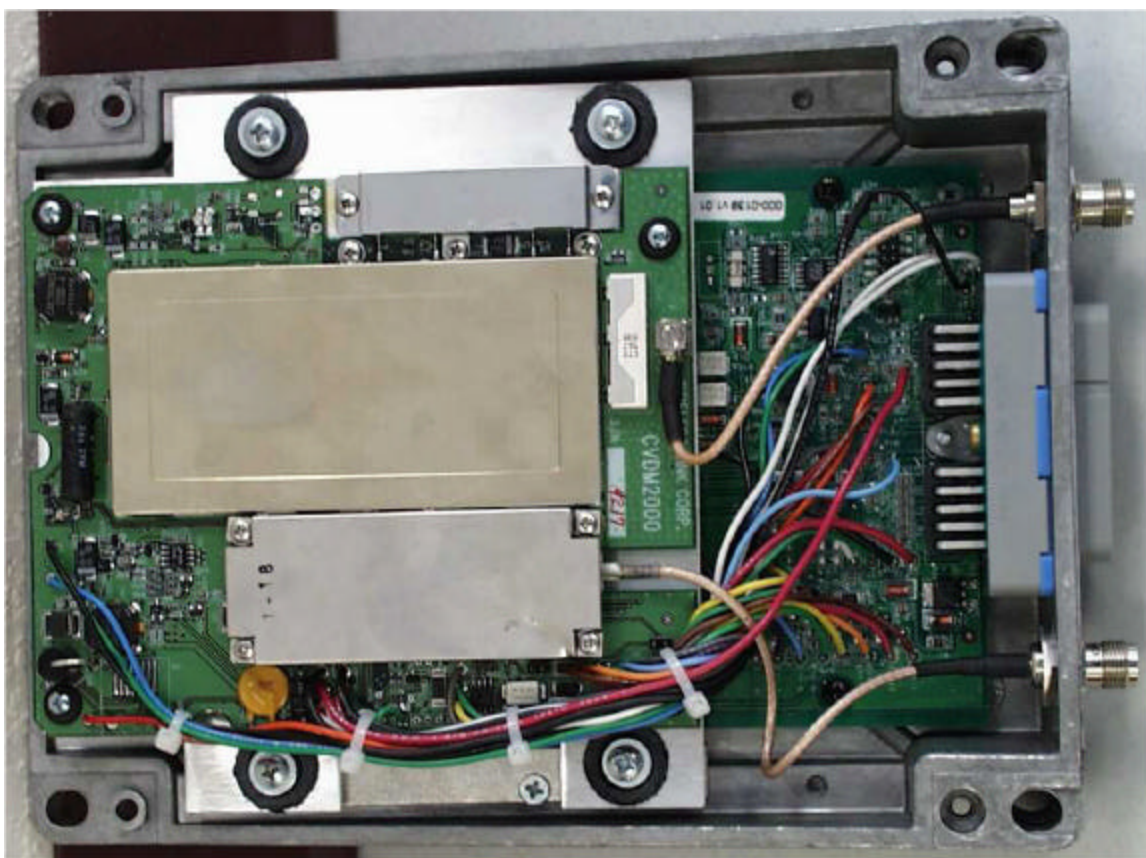


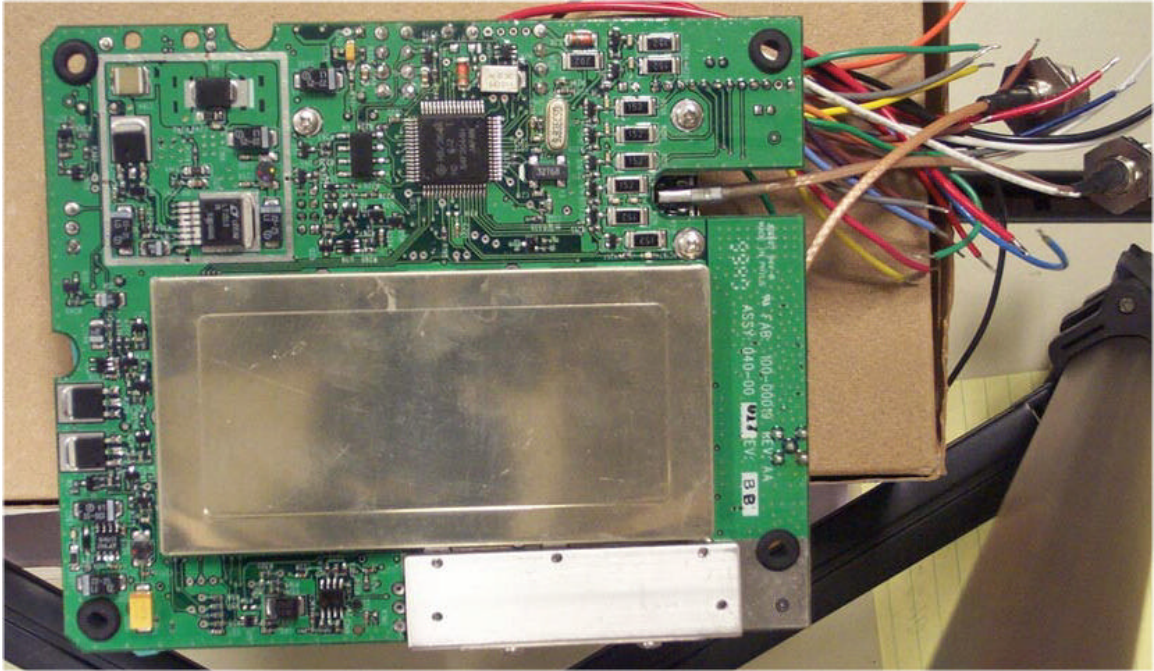
Machine Interface PCB (bottom)

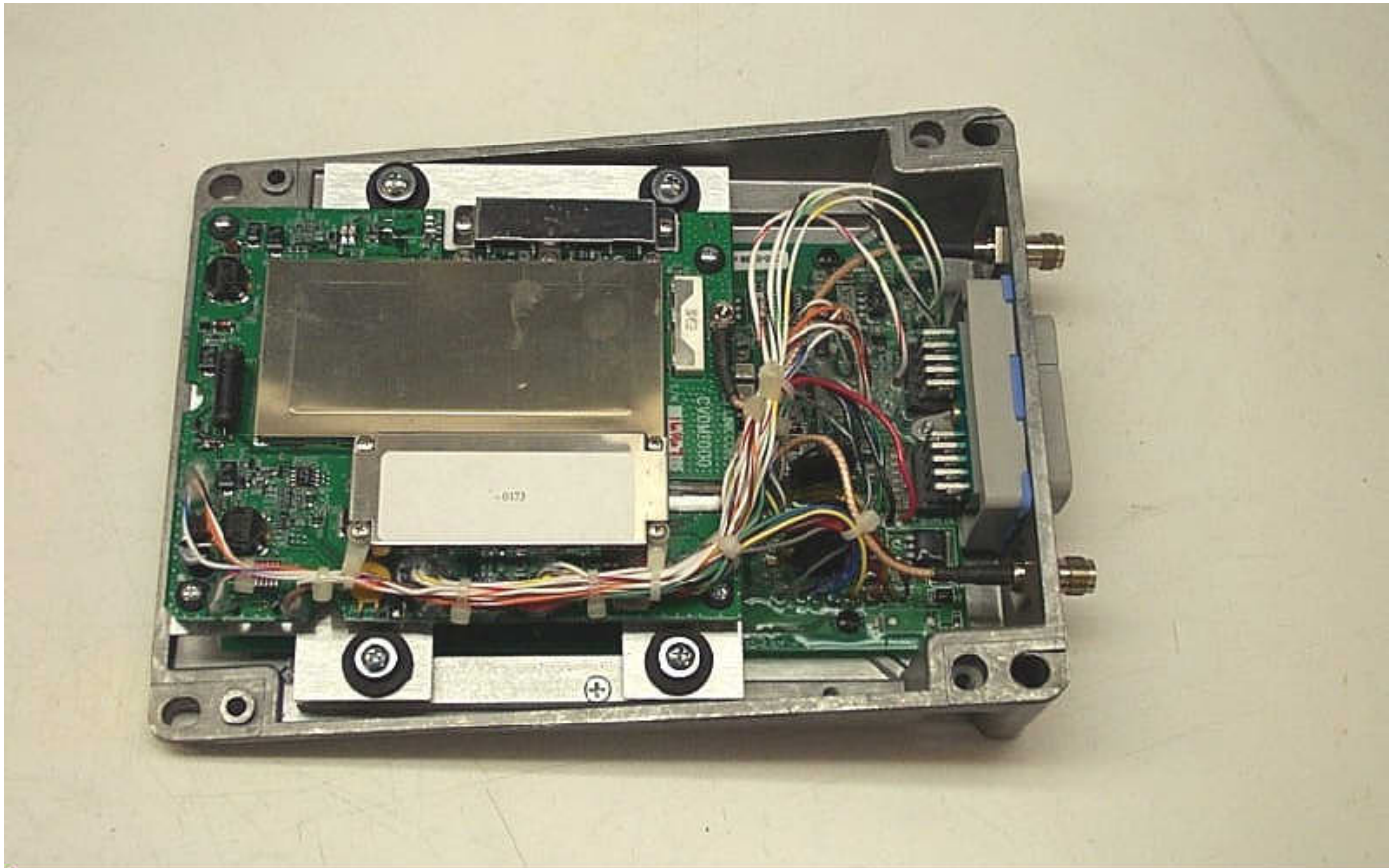




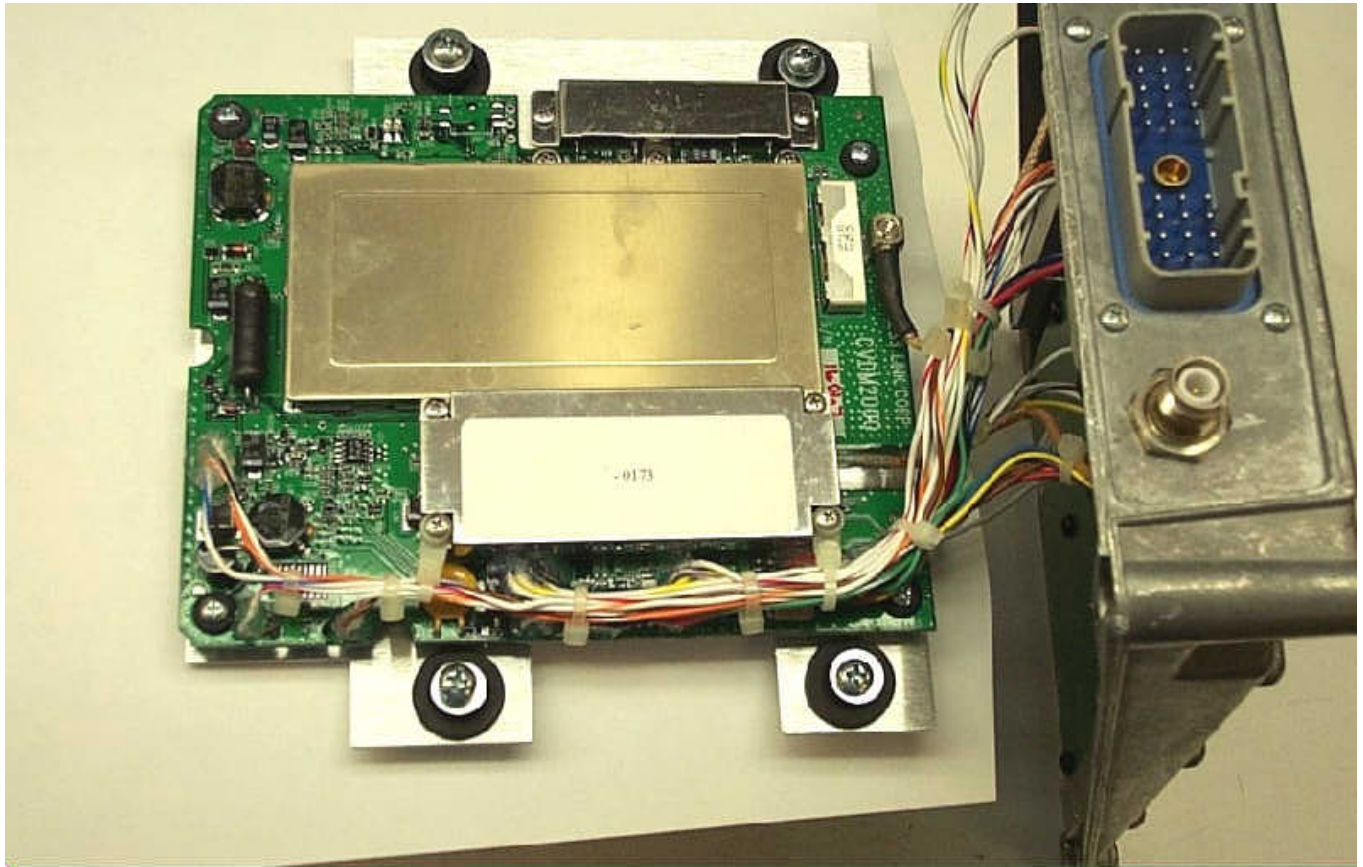




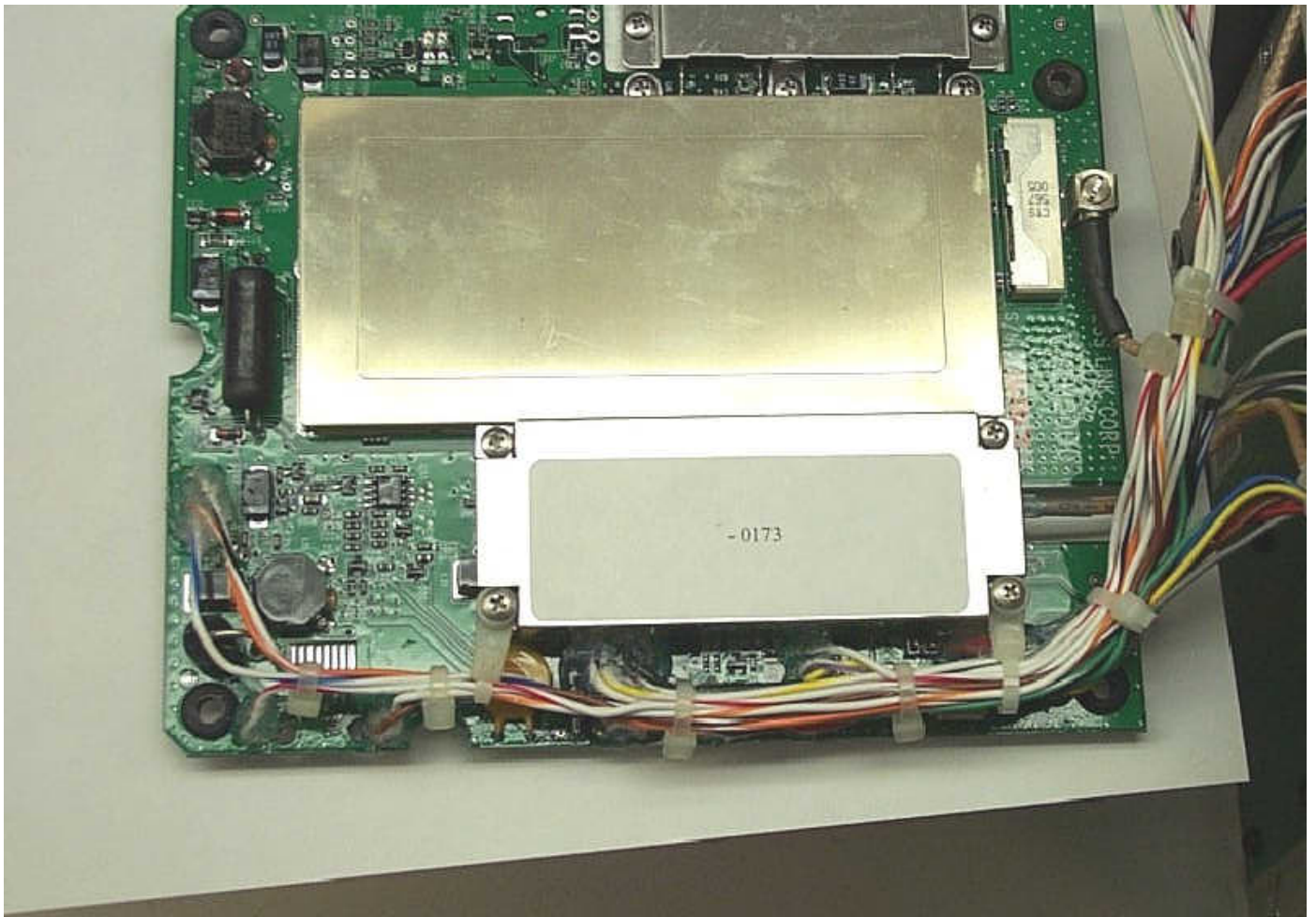




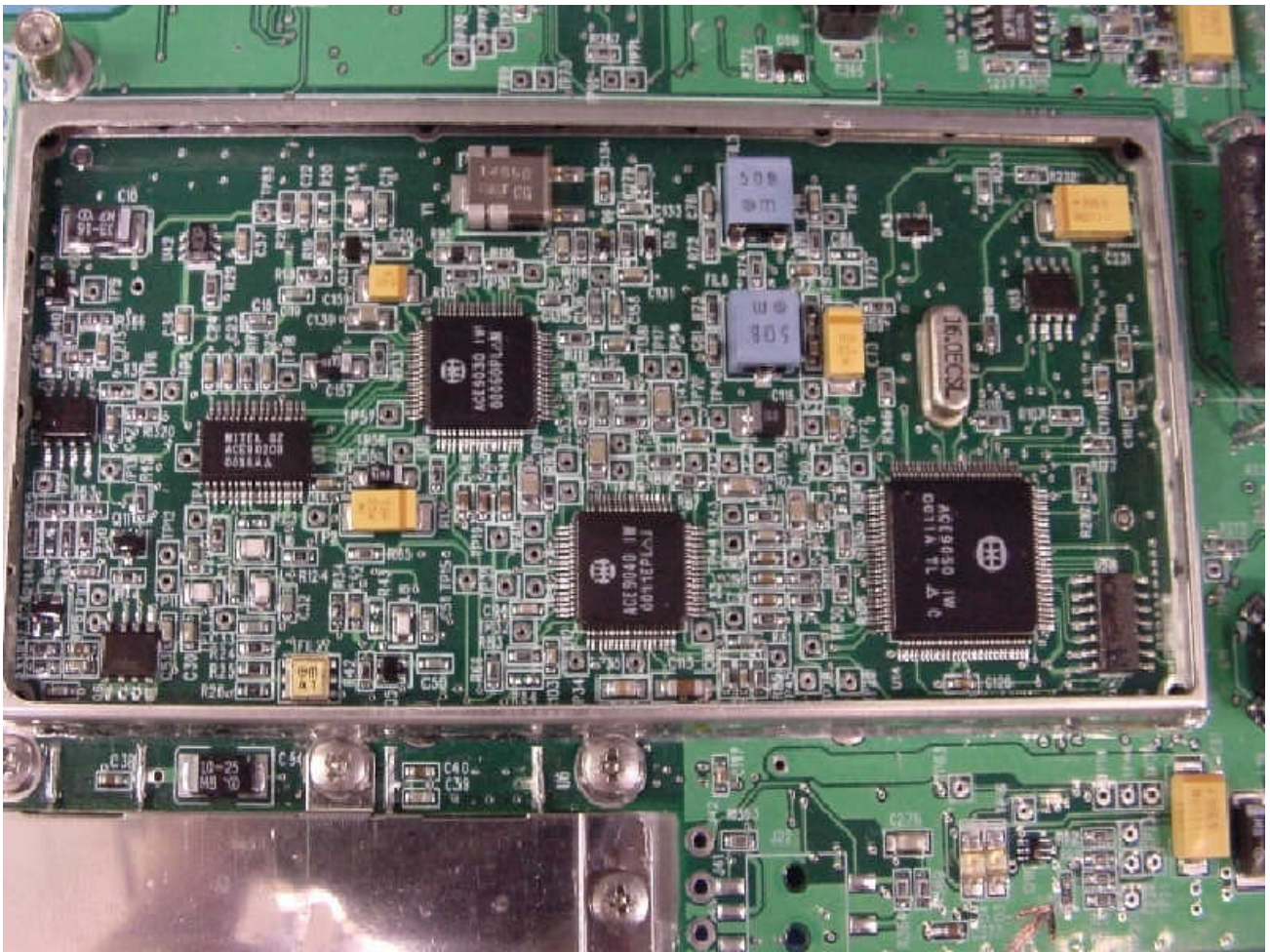
Deere ra with top half of enclosure removed



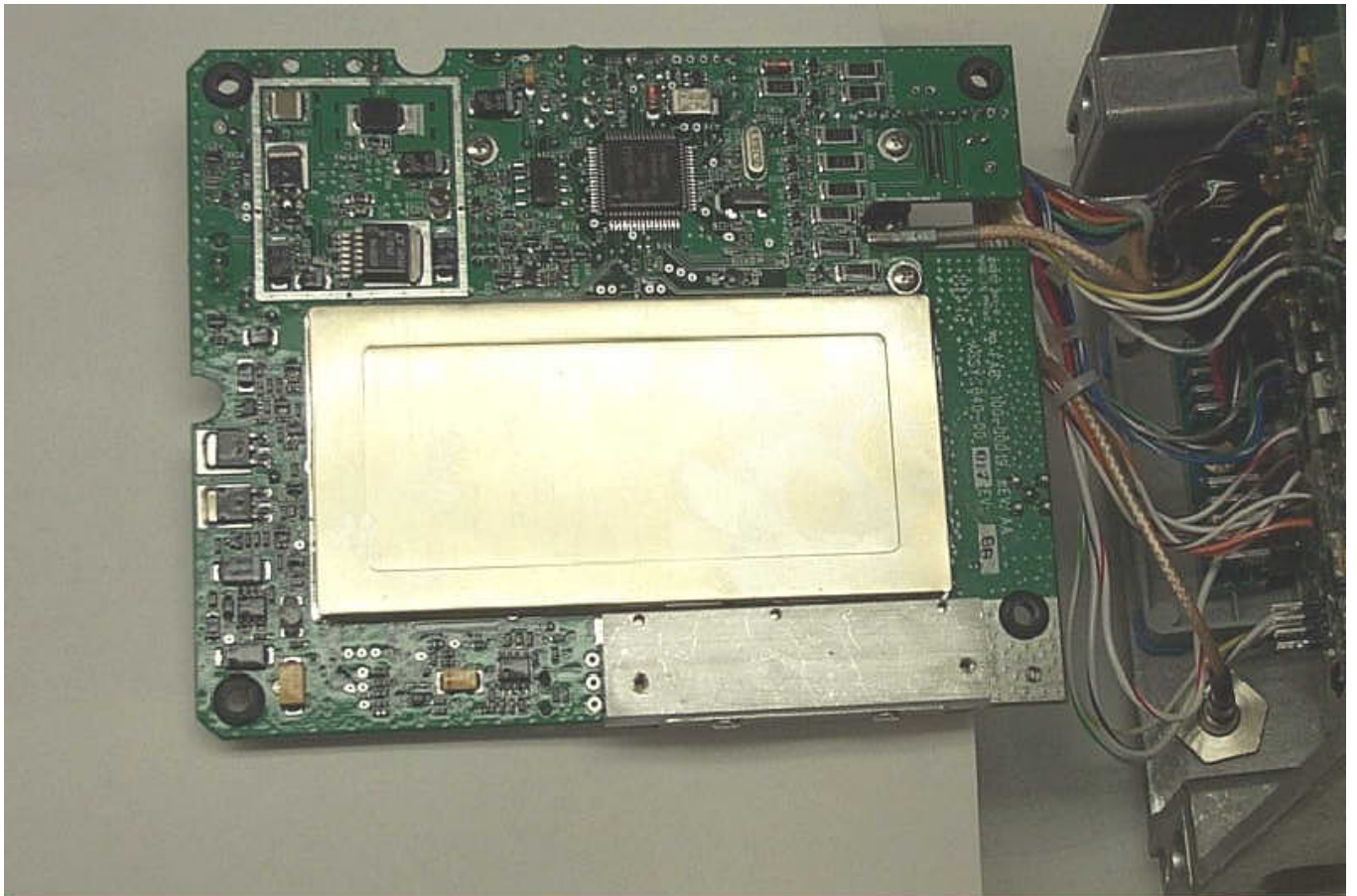
Communications Interface (Modem & GPS) PCB assembly with mounting plate



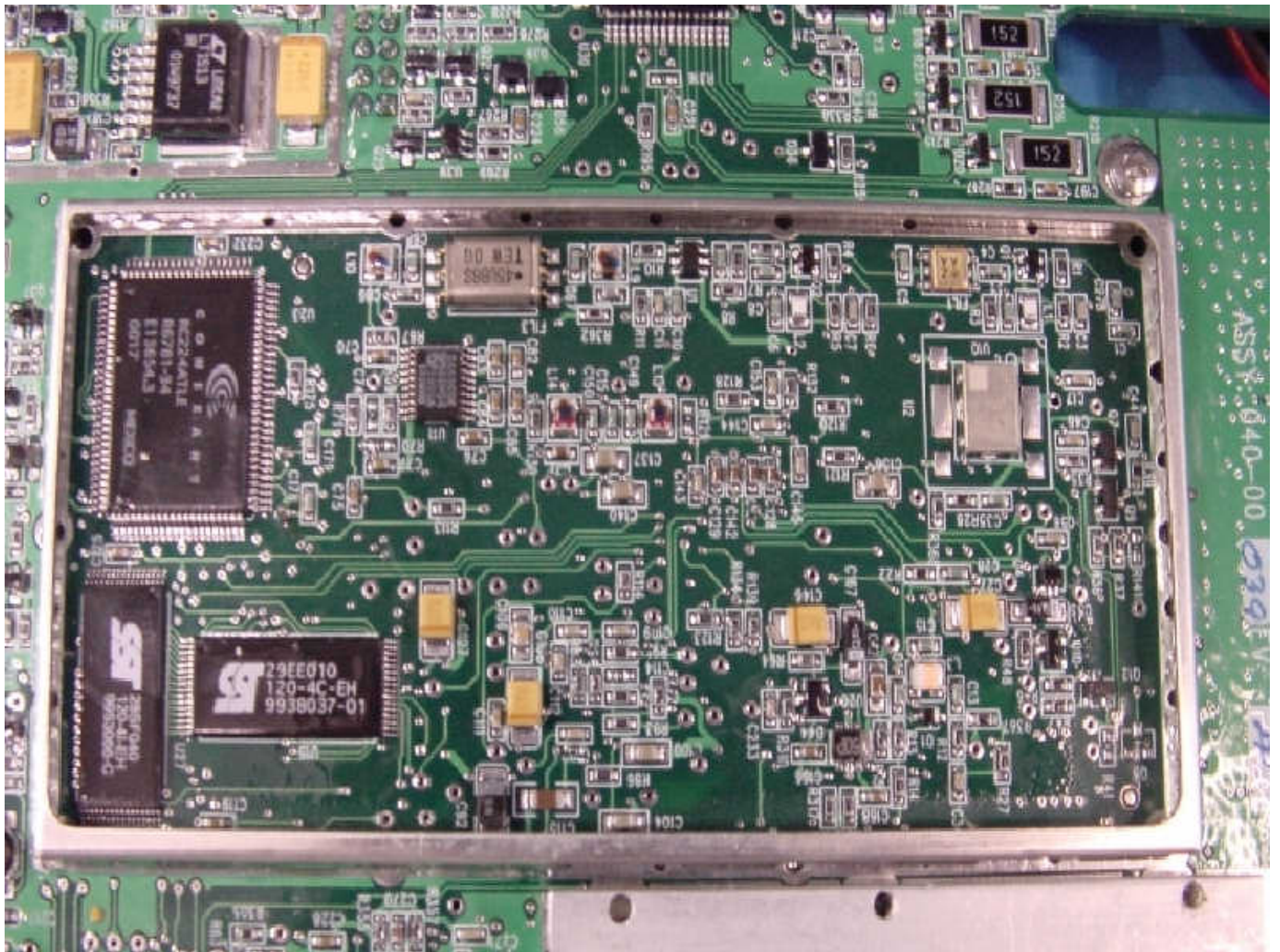
Communications Interface PCB assembly (top)



Communications Interface PCB with RF Shield removed (top)



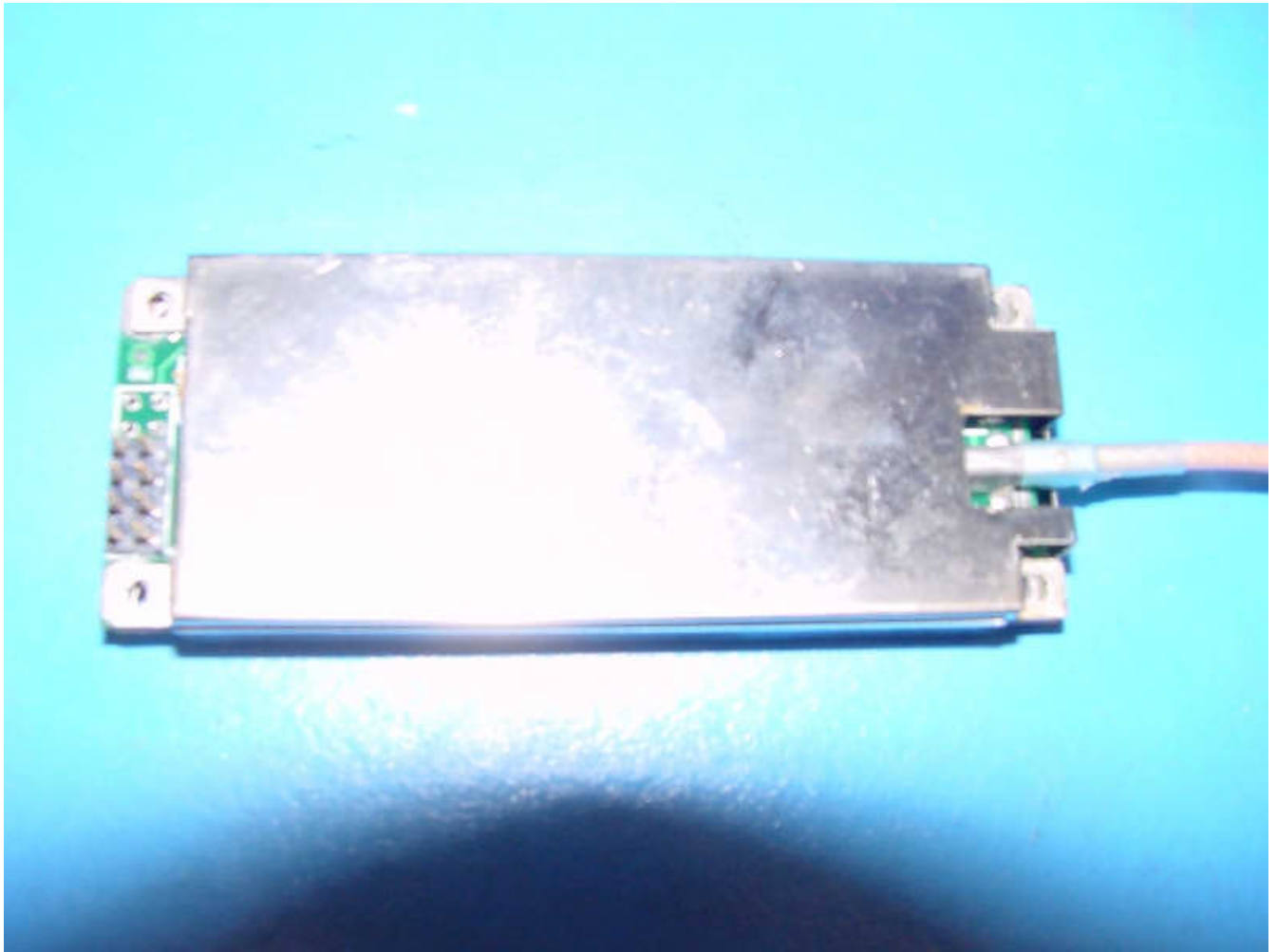
Communications Interface PCB assembly (bottom)



Communications Interface PCB with RF shield removed (bottom)



GPS module (top)



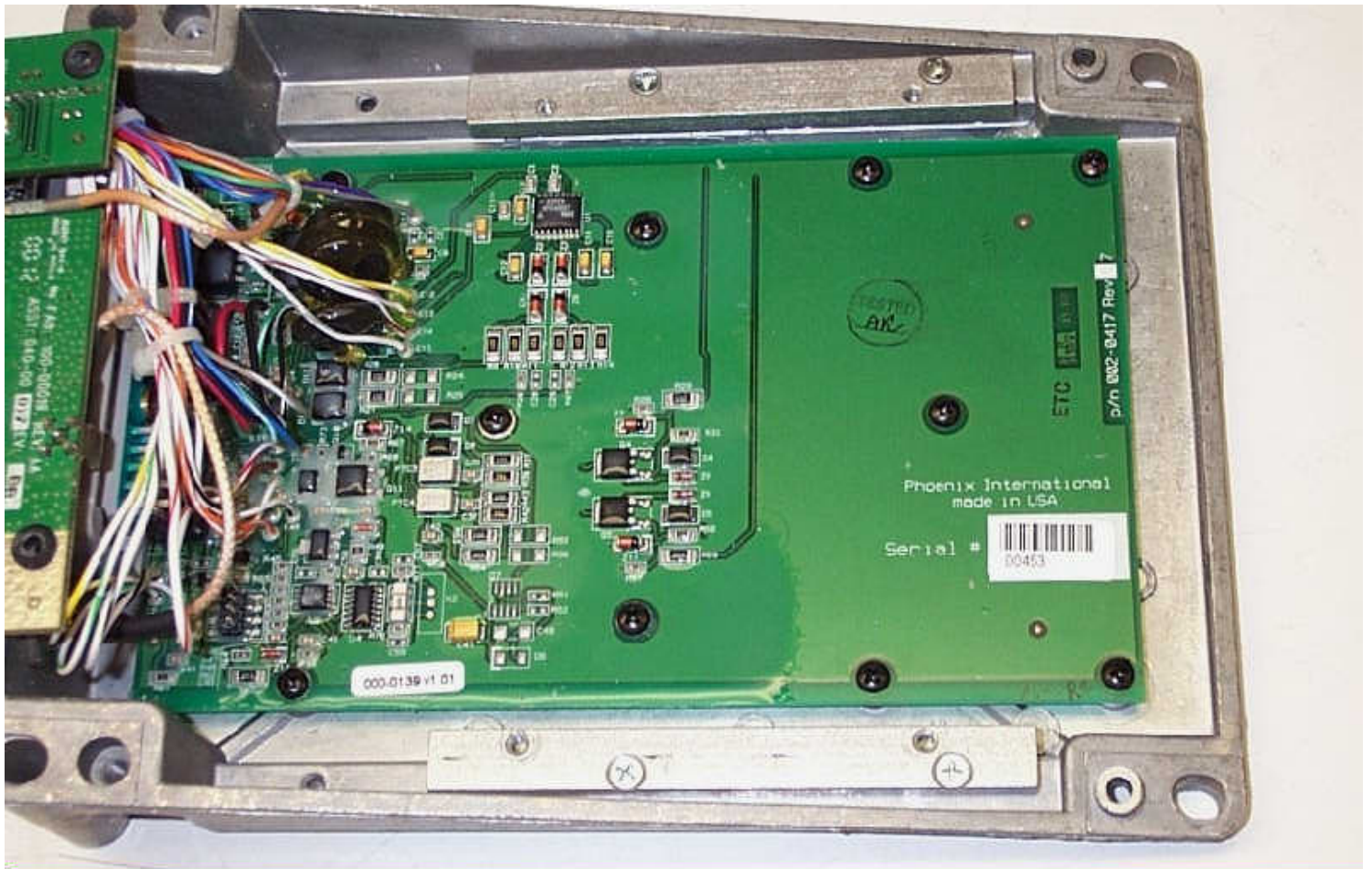
GPS module (bottom)



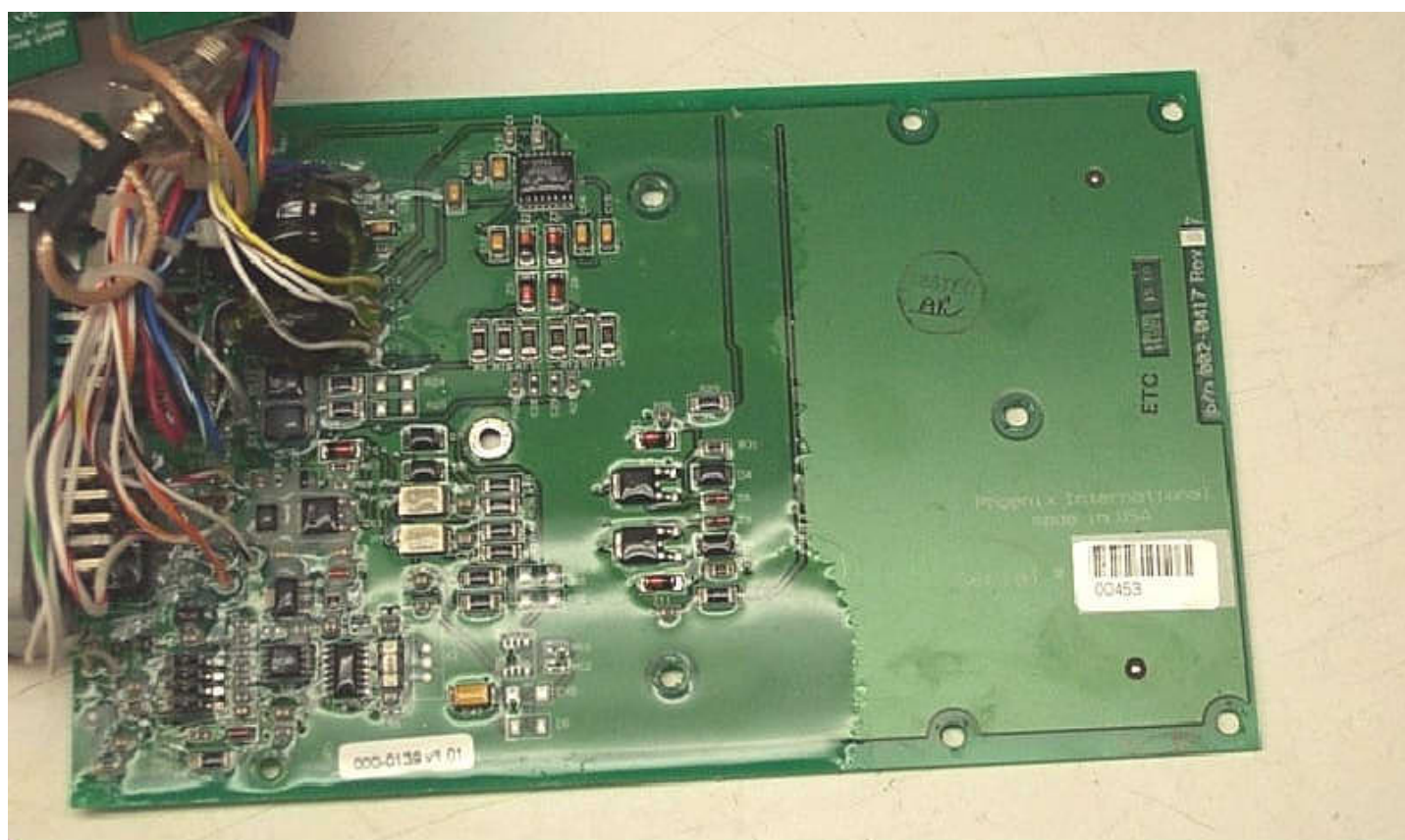
GPS module with RF shield removed (top)



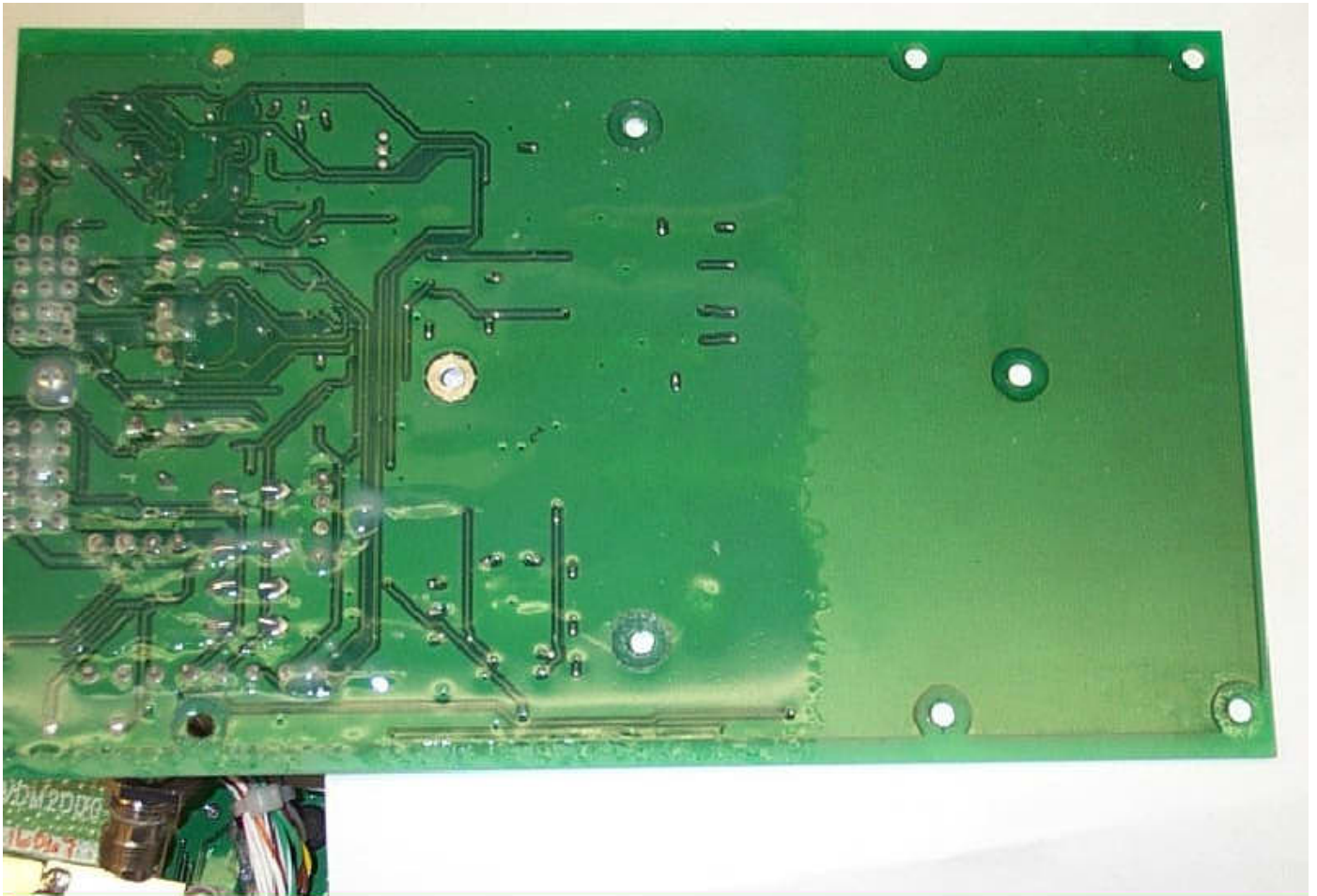
GPS module with RF shield removed (bottom)



Machine Interface PCB in enclosure with Communications Interface PCB removed



Machine Interface PCB (top)



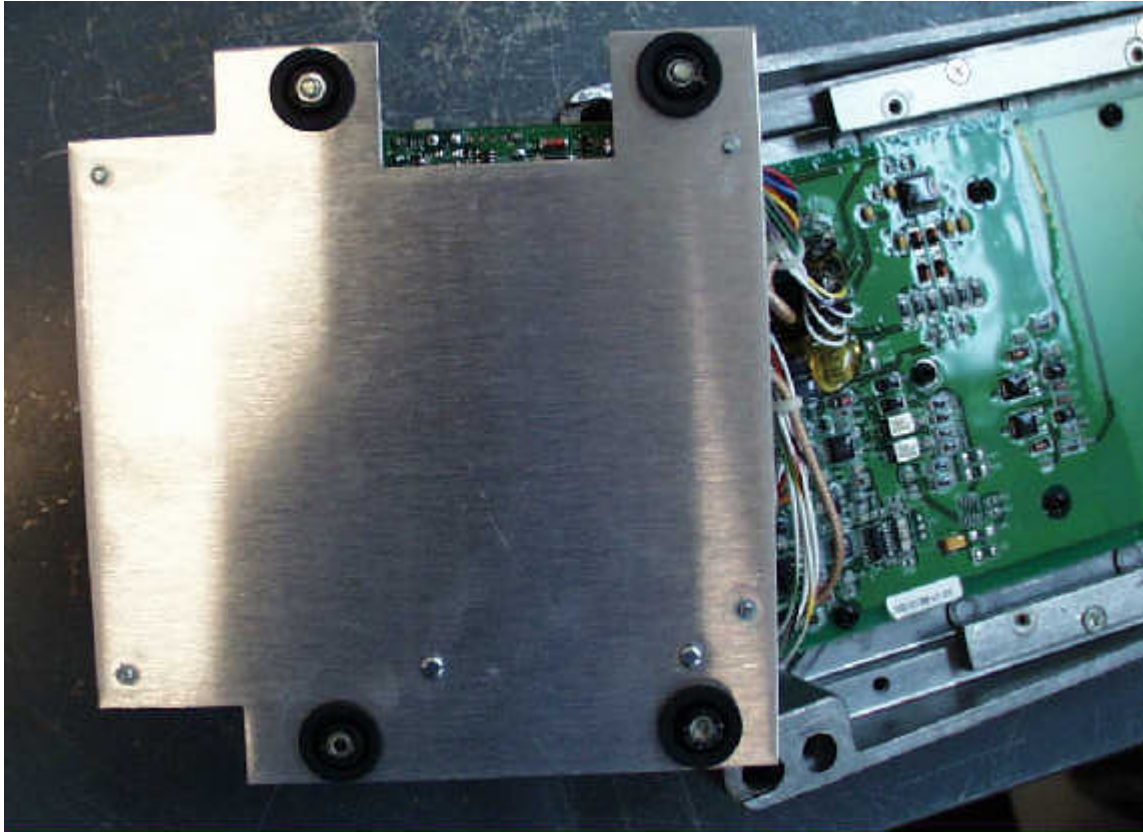
Machine Interface PCB (bottom)



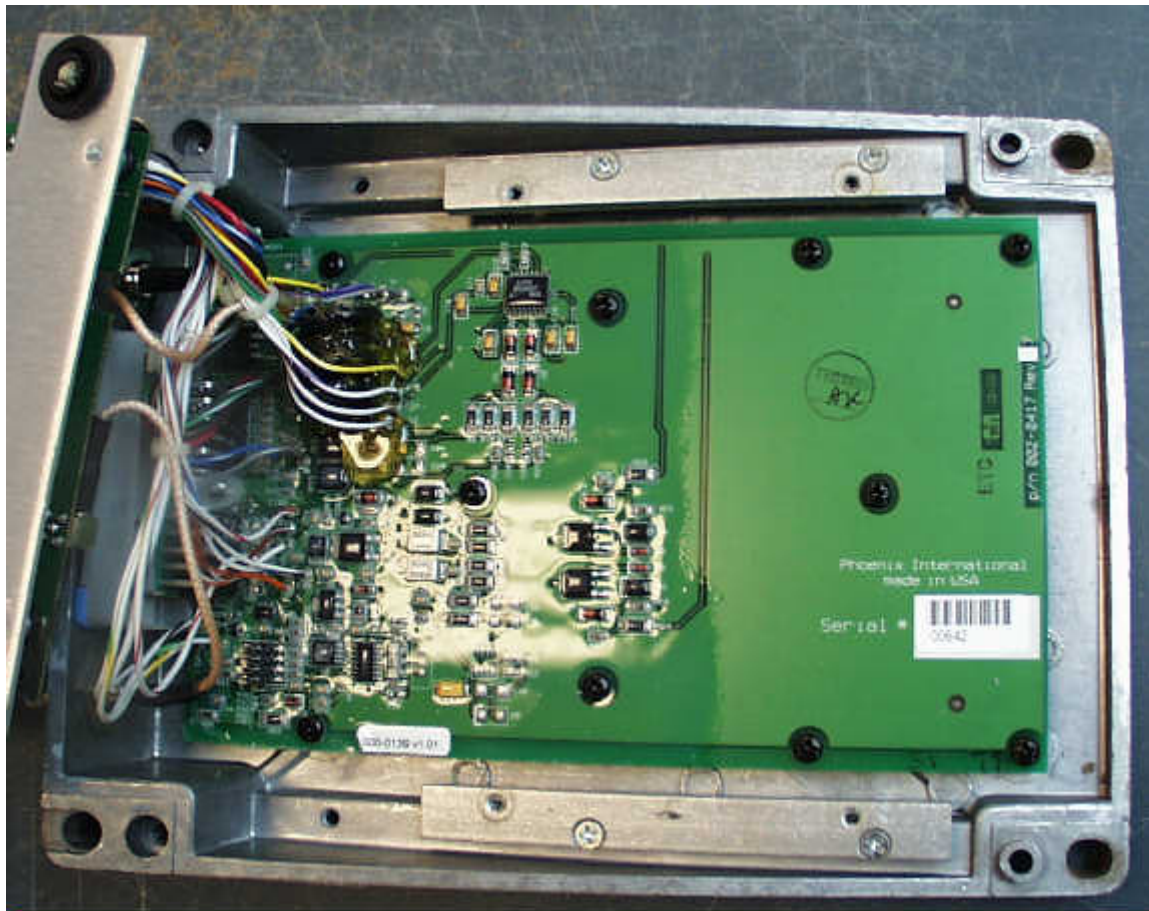
Deere ra with top half of enclosure removed showing Communications Interface PCB – view



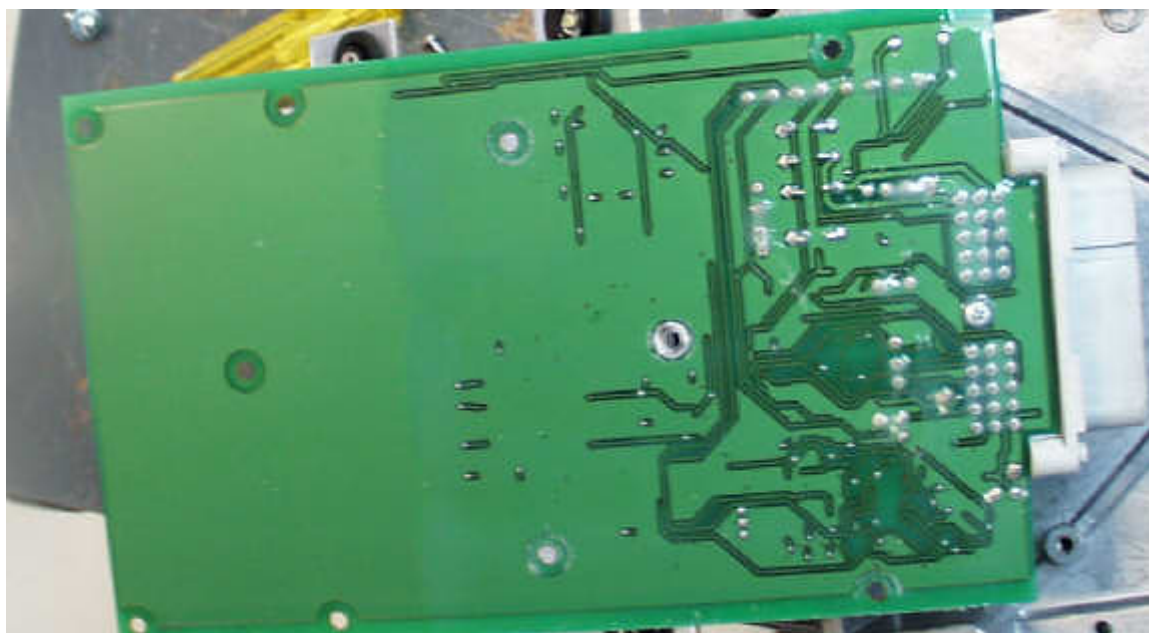
Deere ra with top half of enclosure removed showing Communications Interface PCB – view



Bottom view of Communications Interface PCB mounting plate



Machine Interface PCB (top)



Machine Interface PCB (bottom)