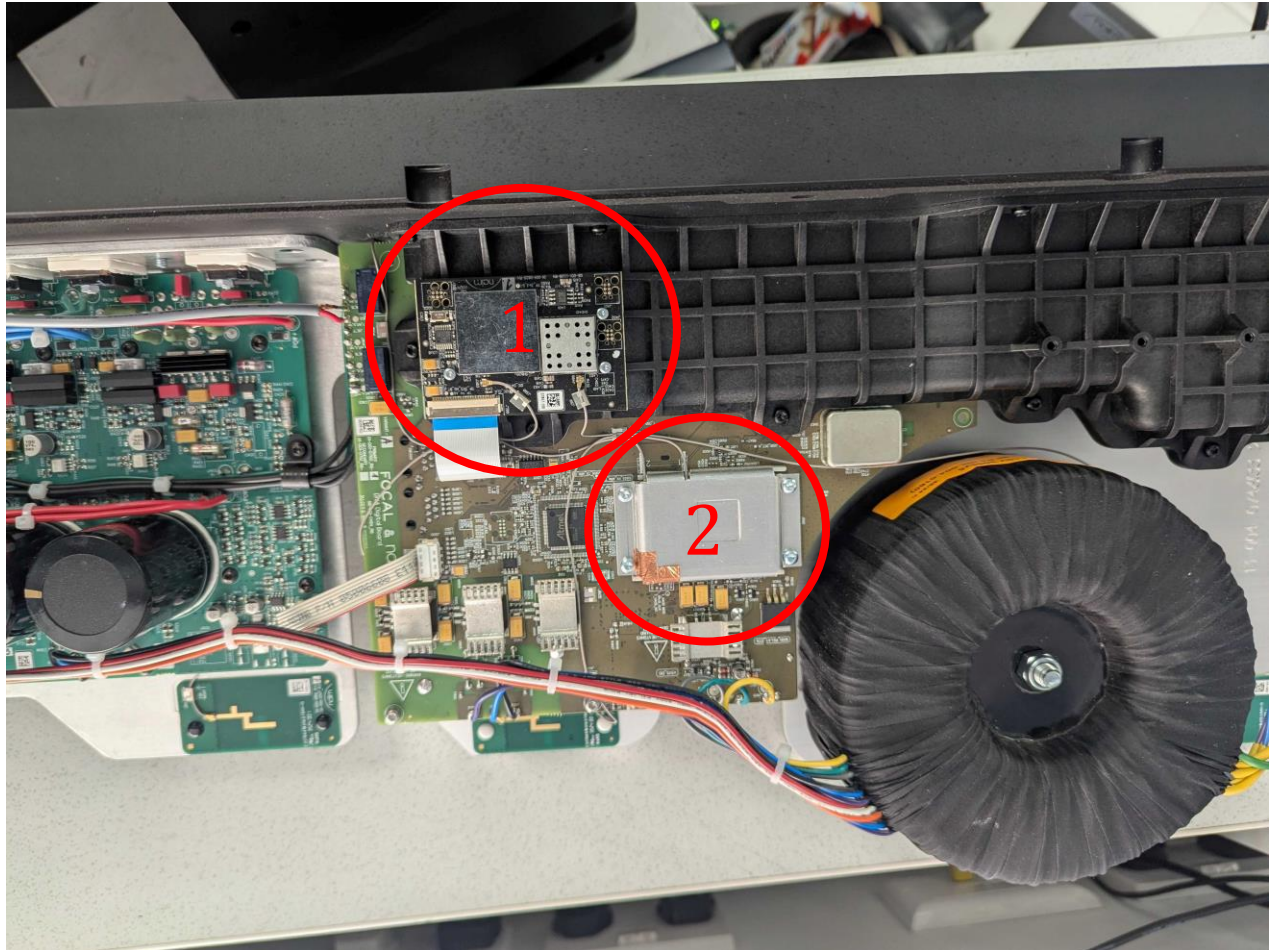


## Radio Modules Locations



Complete PCB assembly onto Heatsink:

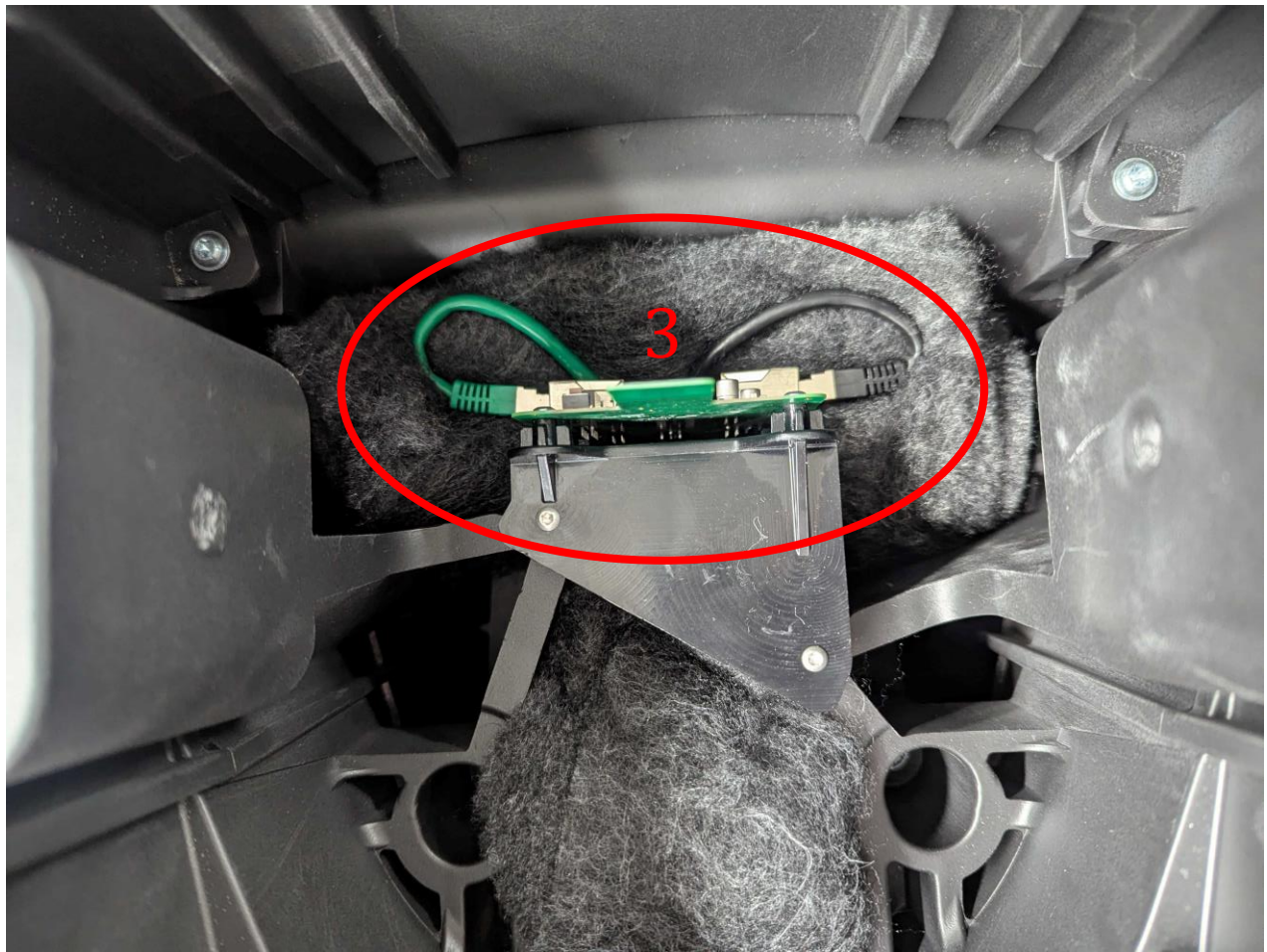
- 1) Bluetooth & Zigbee Module (Primary **ONLY**)
- 2) S1955i shield which exposes the S1955i streaming module once removed (Primary **ONLY**)
- 3) UWB RF module (see next page for location) (Primary **AND** Secondary) (See next page)



FOCAL



## Radio Modules Locations Continued



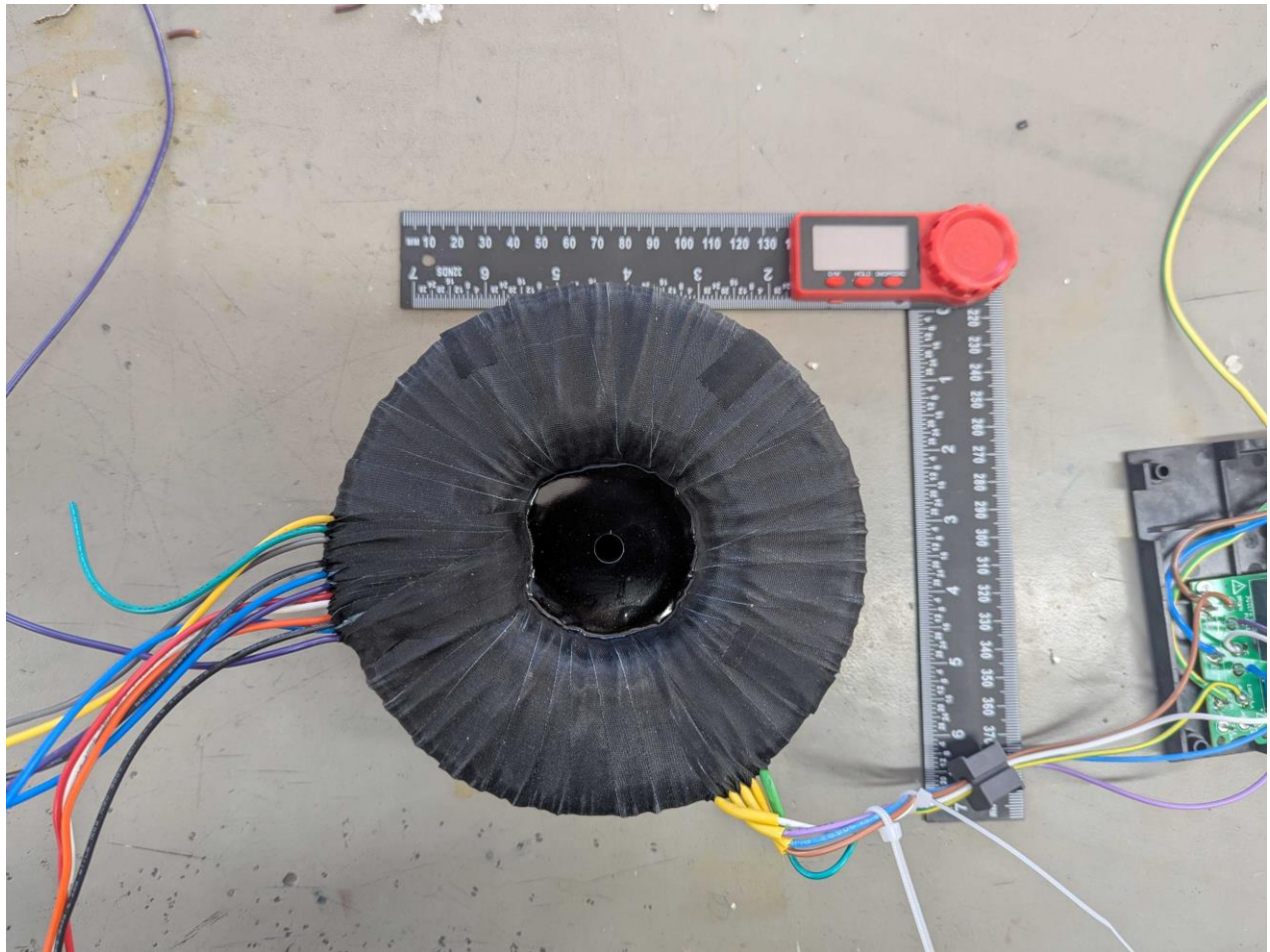
FOCAL





## Top & Bottom View of PCBs

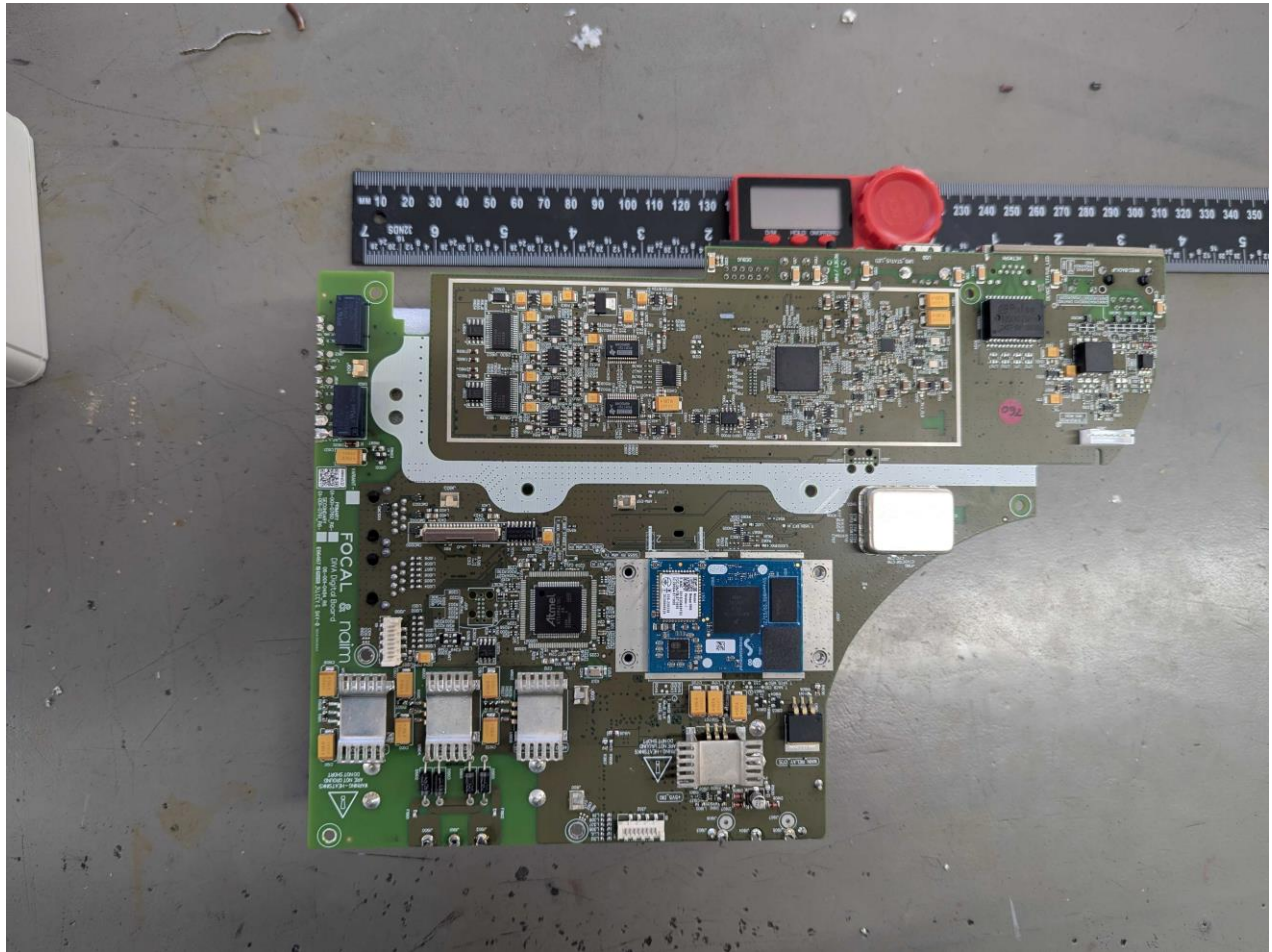
### Mains Transformer



FOCAL



## Digital PCB (Primary) (Top) with no shield on streamer module

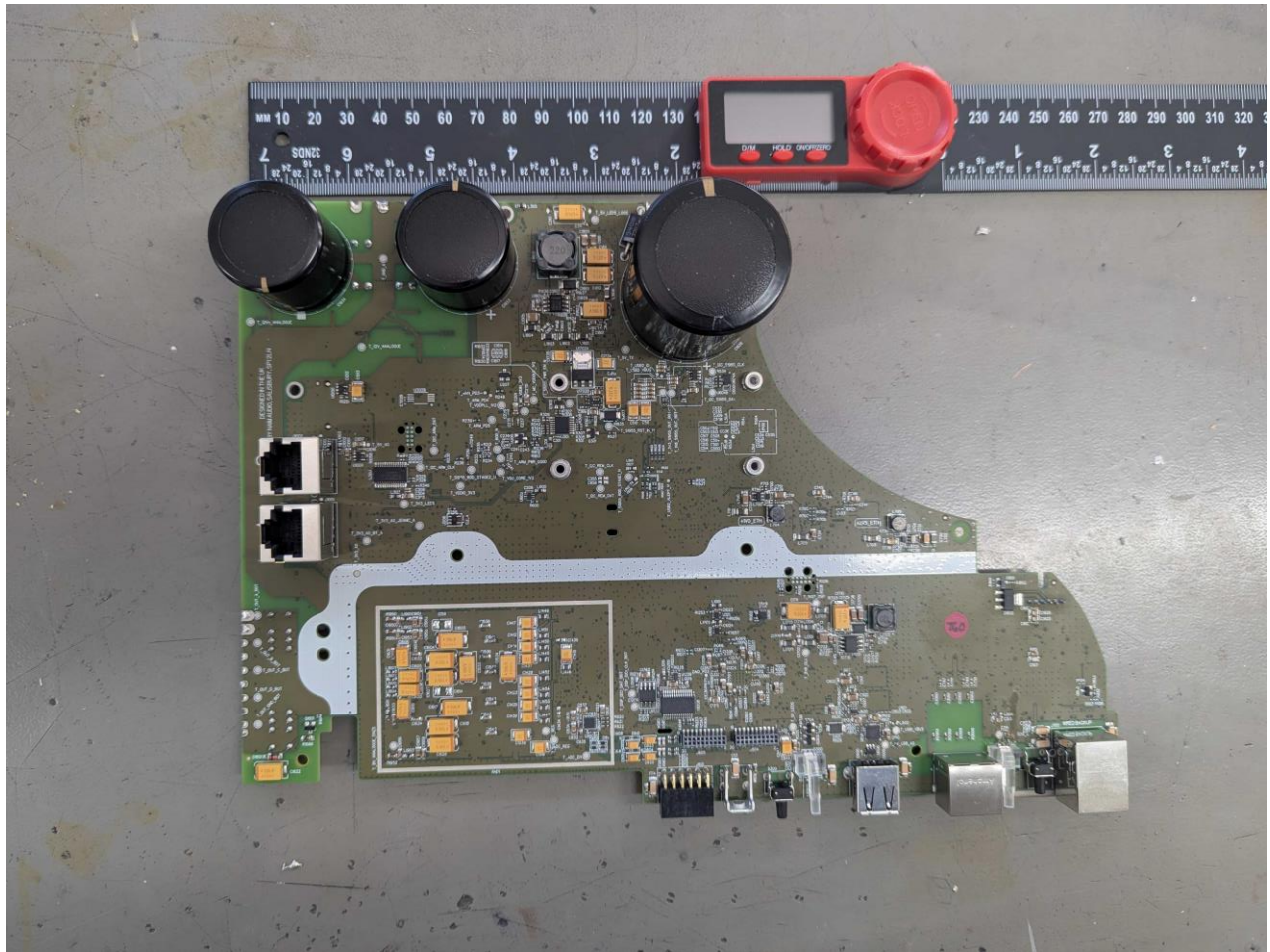


FOCAL





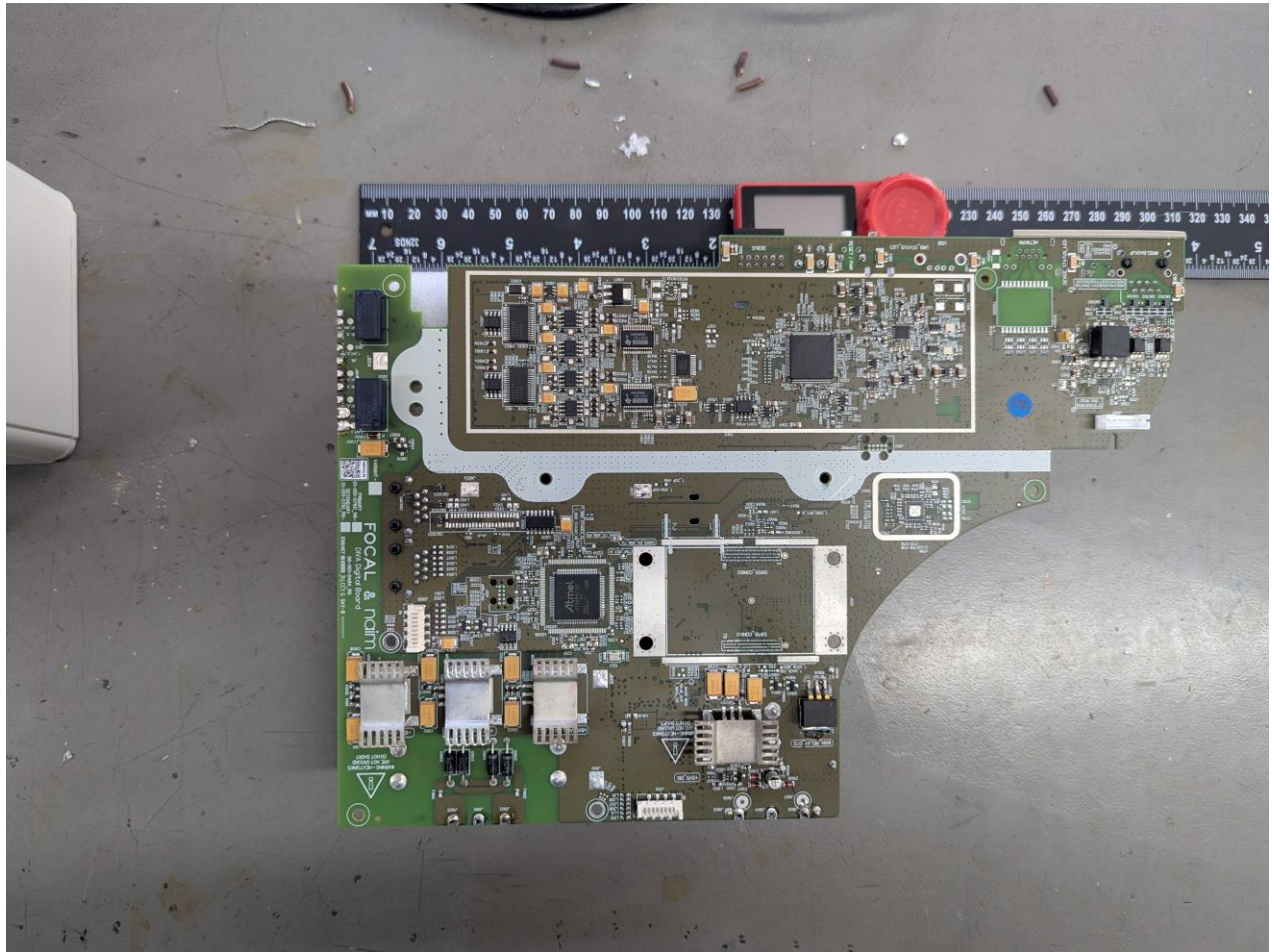
## Digital PCB (Primary) (Bottom)



FOCAL



## Digital PCB (Secondary) (Top)

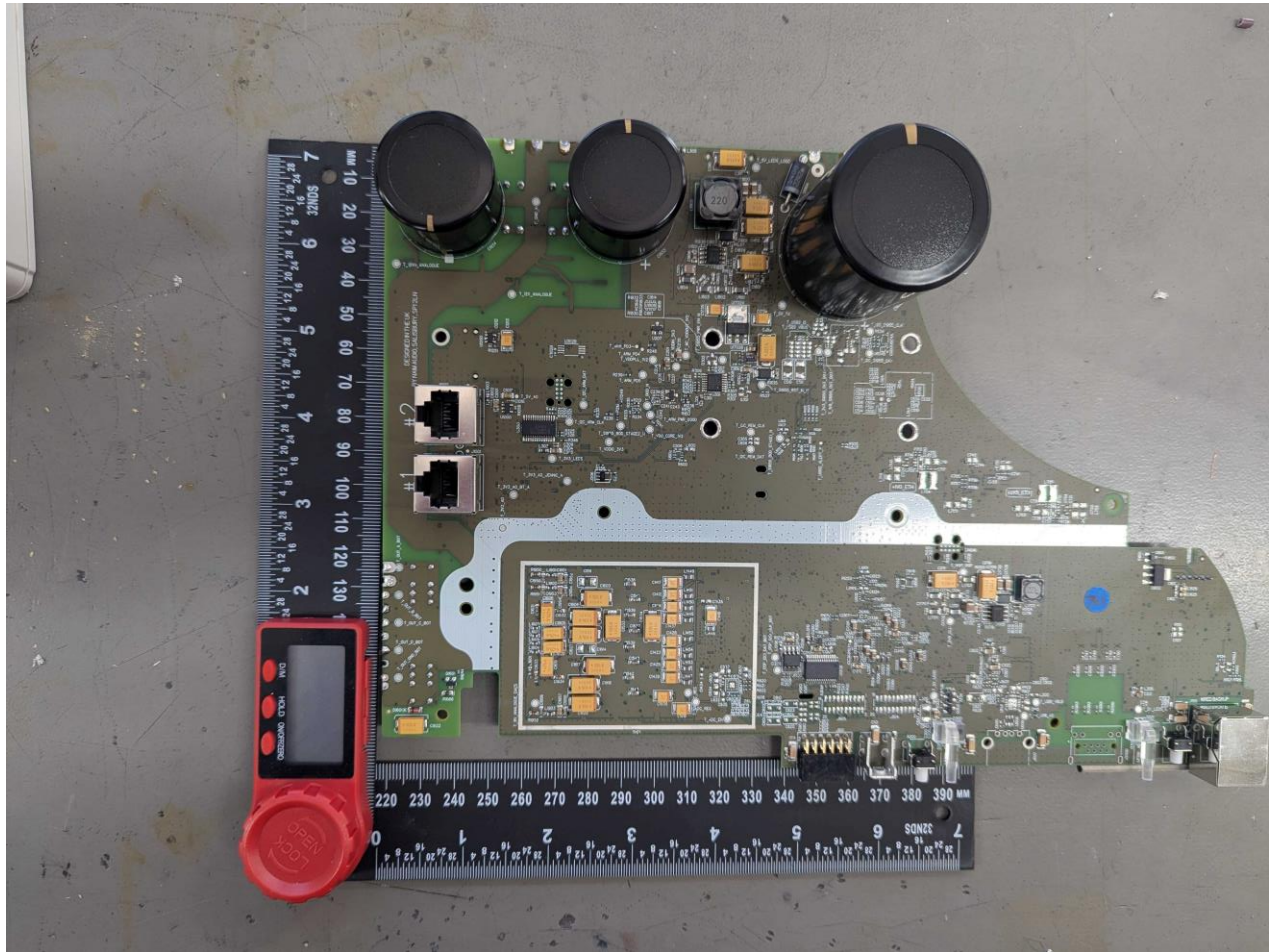


FOCAL





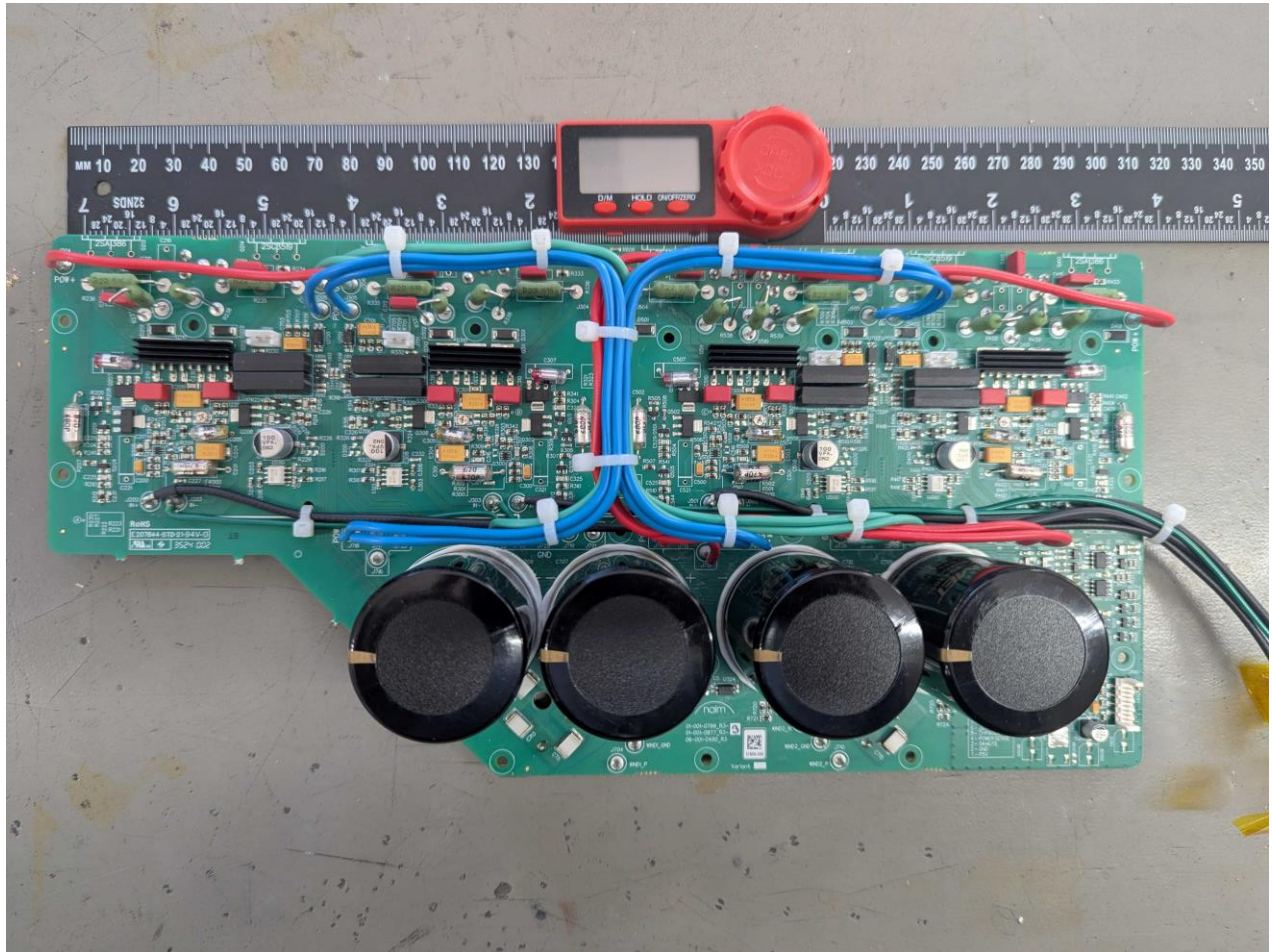
## Digital PCB (Secondary) (Bottom)



FOCAL



## PA PCB (Top)

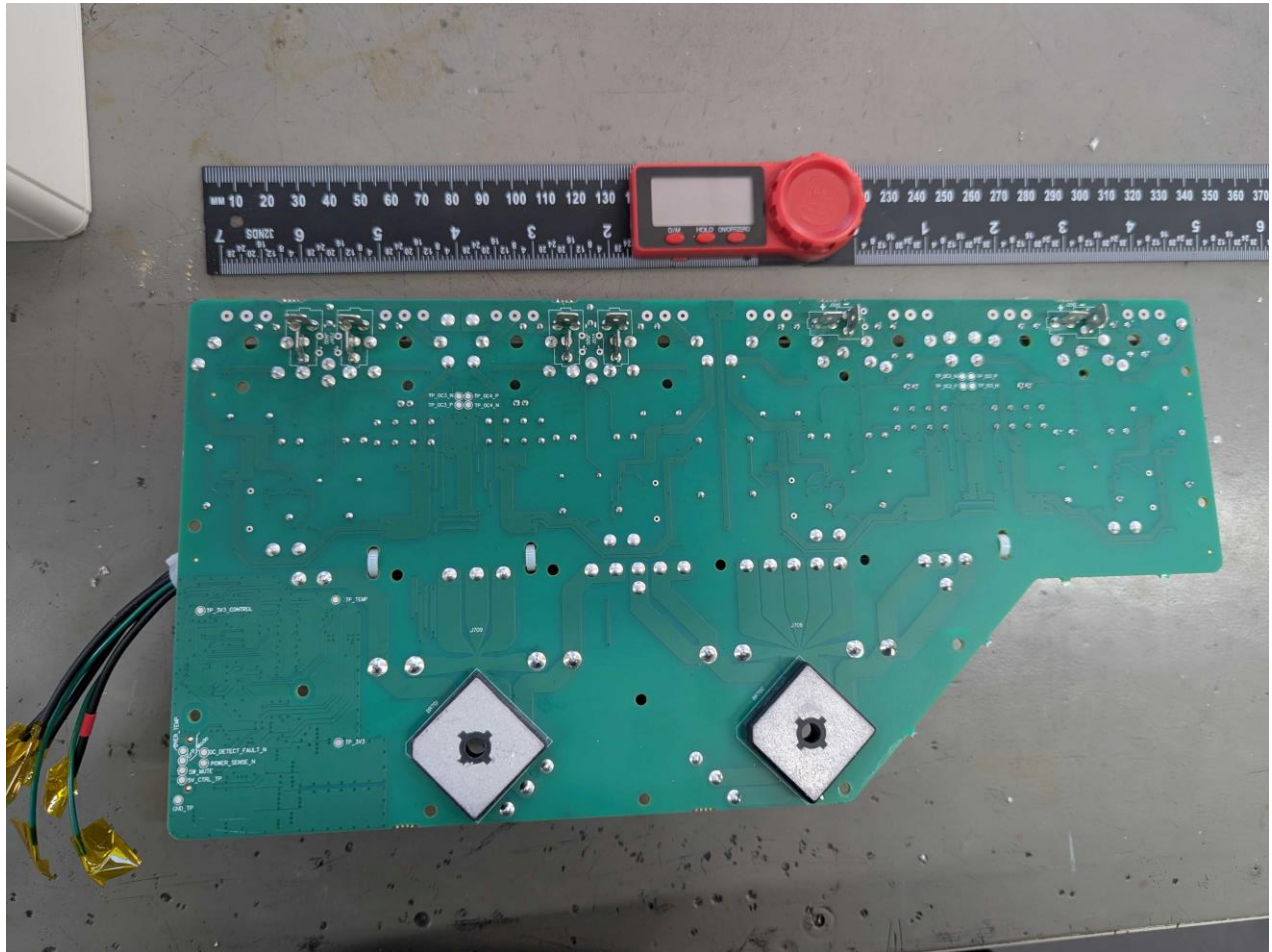


FOCAL





## PA PCB (Bottom)



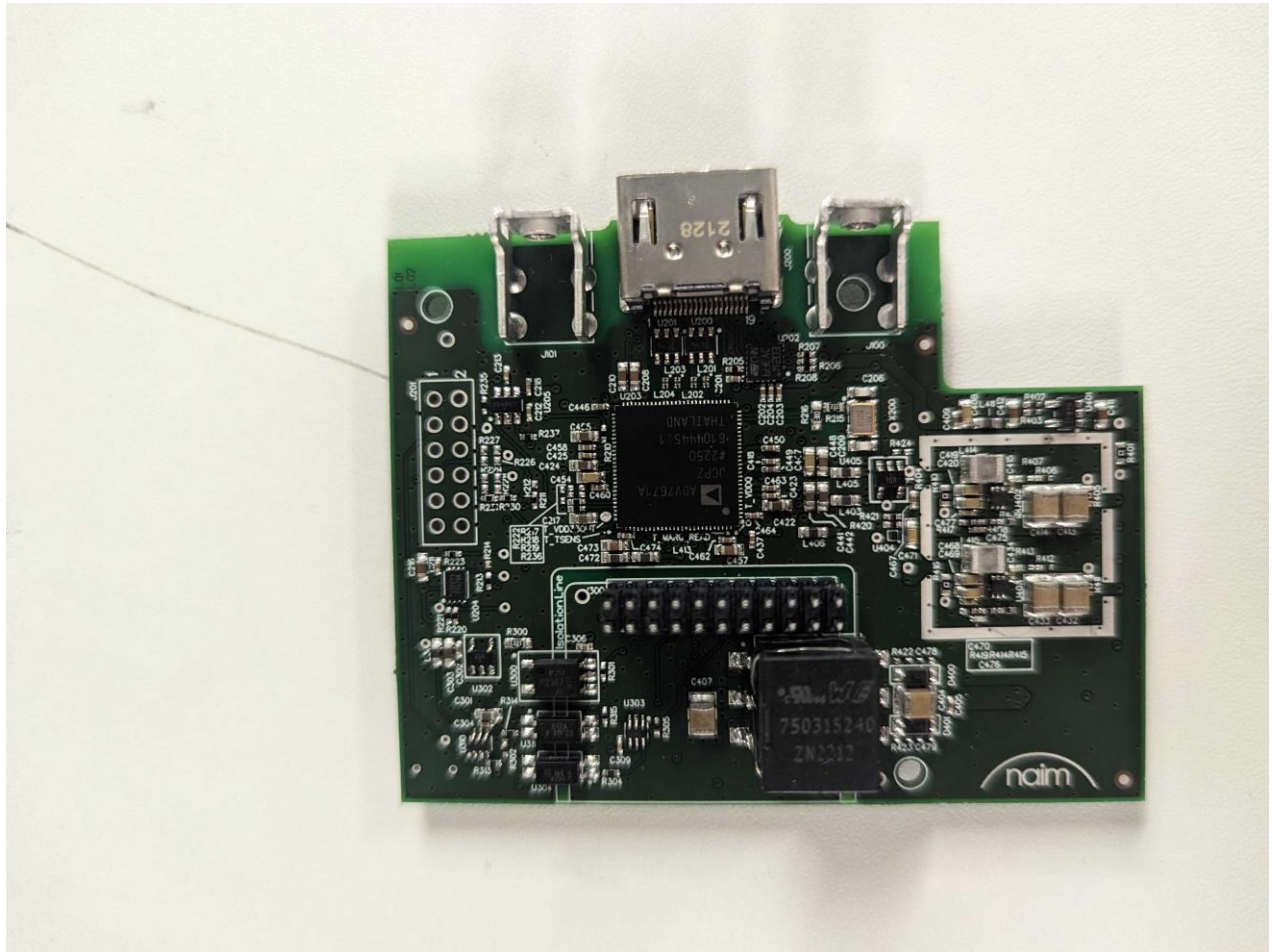
FOCAL







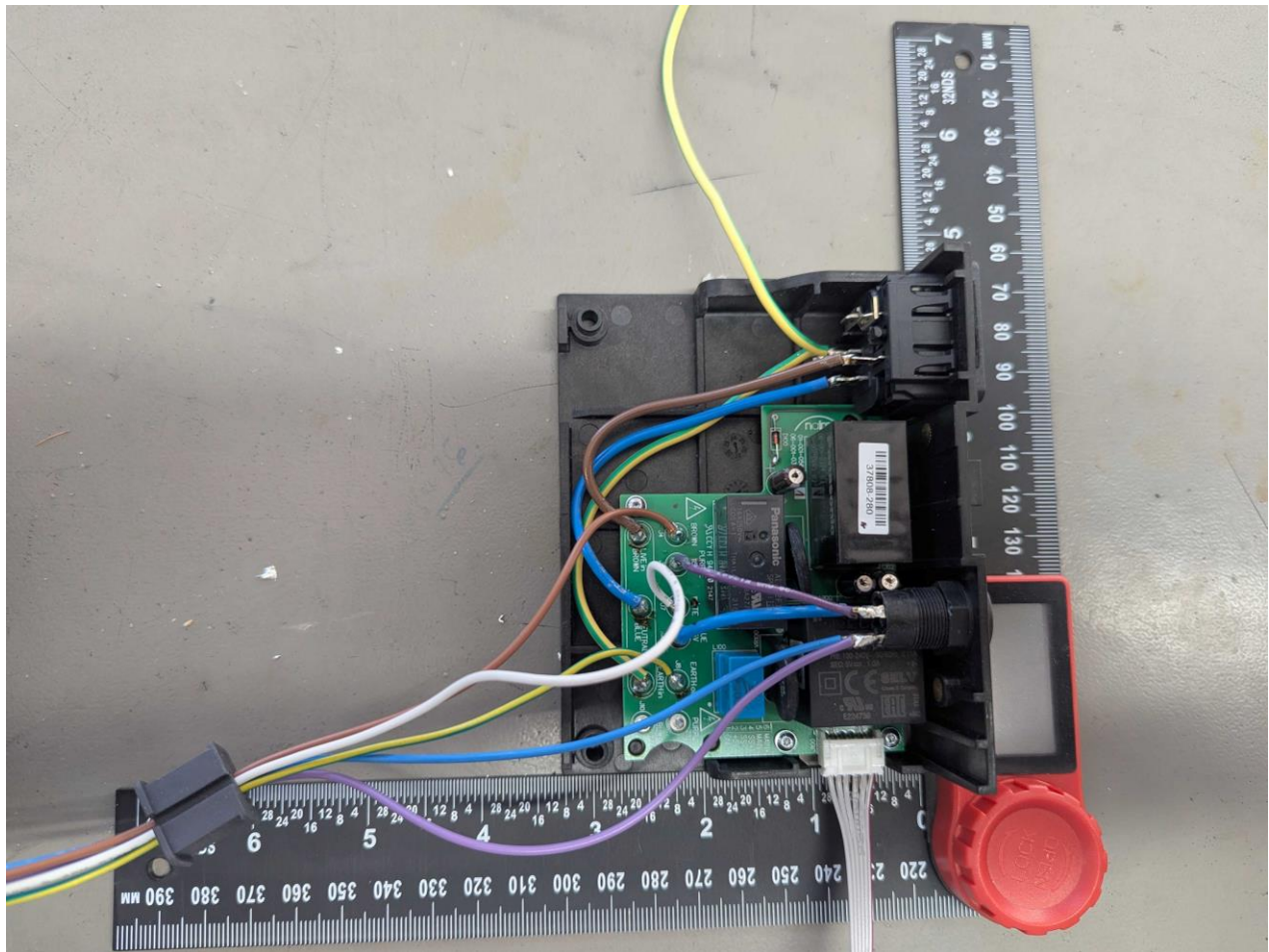
## HDMI PCB (Bottom)



FOCAL



## EuP Module (Top)



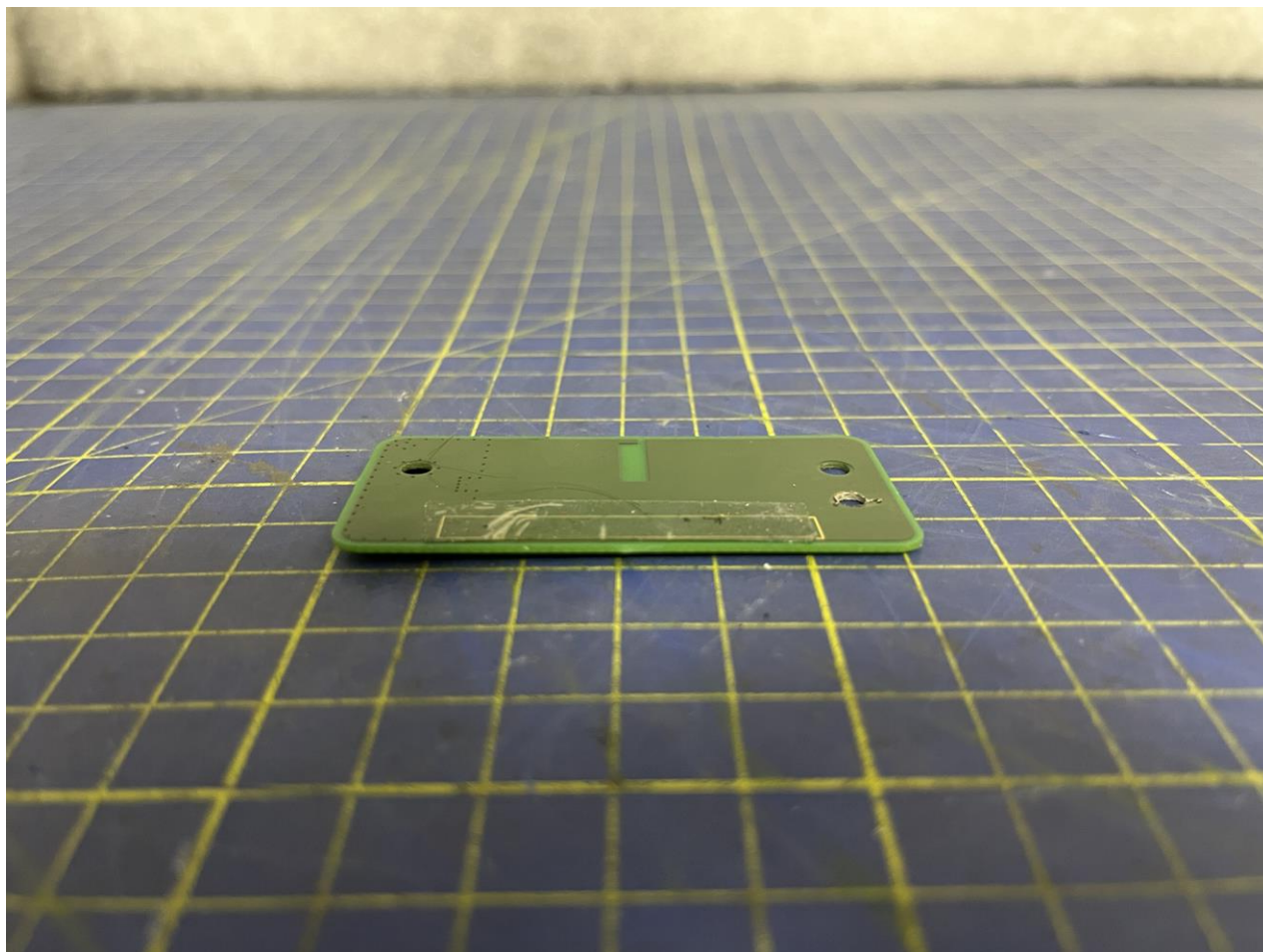
FOCAL







## Front Wi-Fi, Zigbee & Bluetooth Antenna PCB (Bottom)

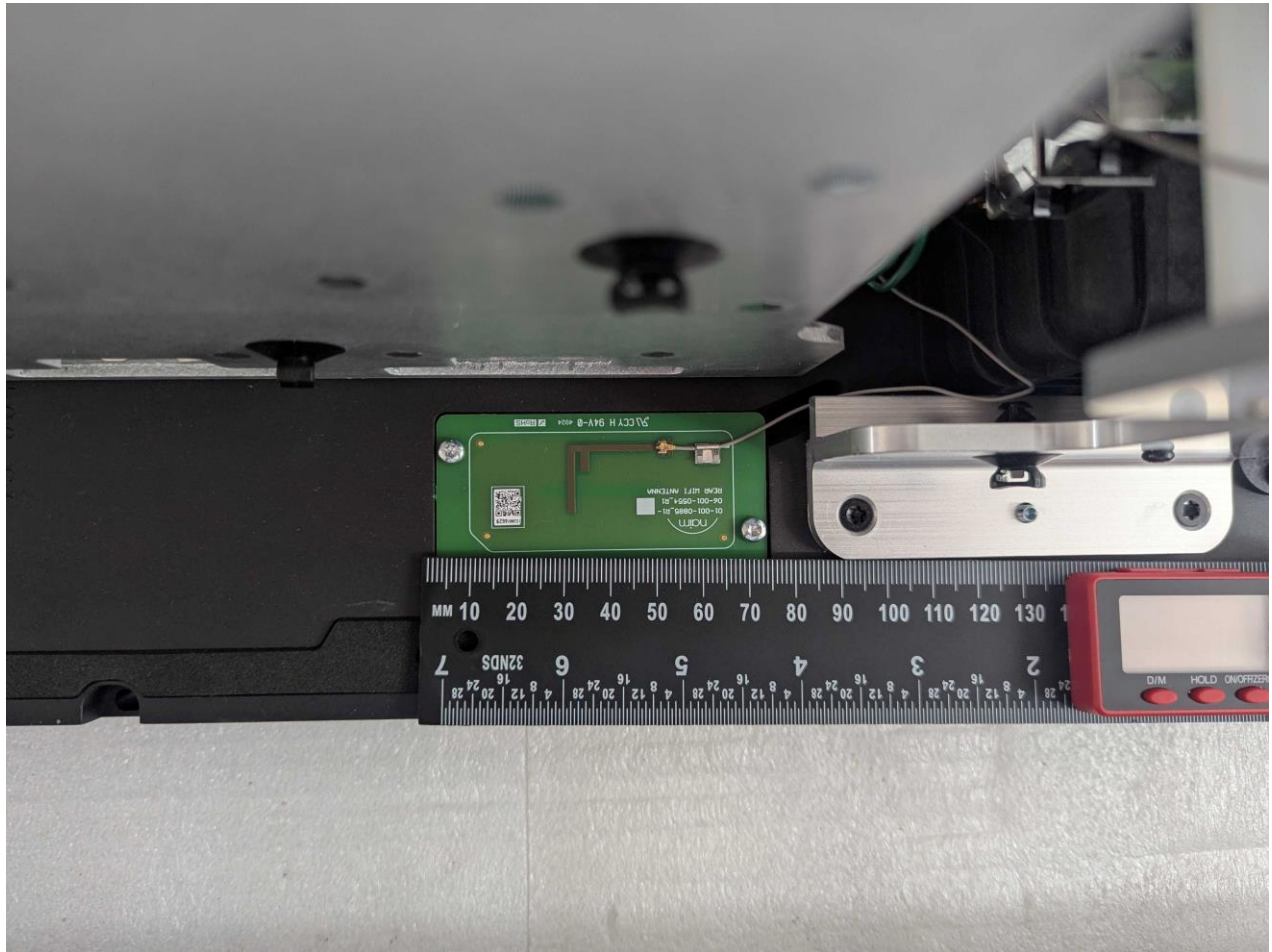


FOCAL

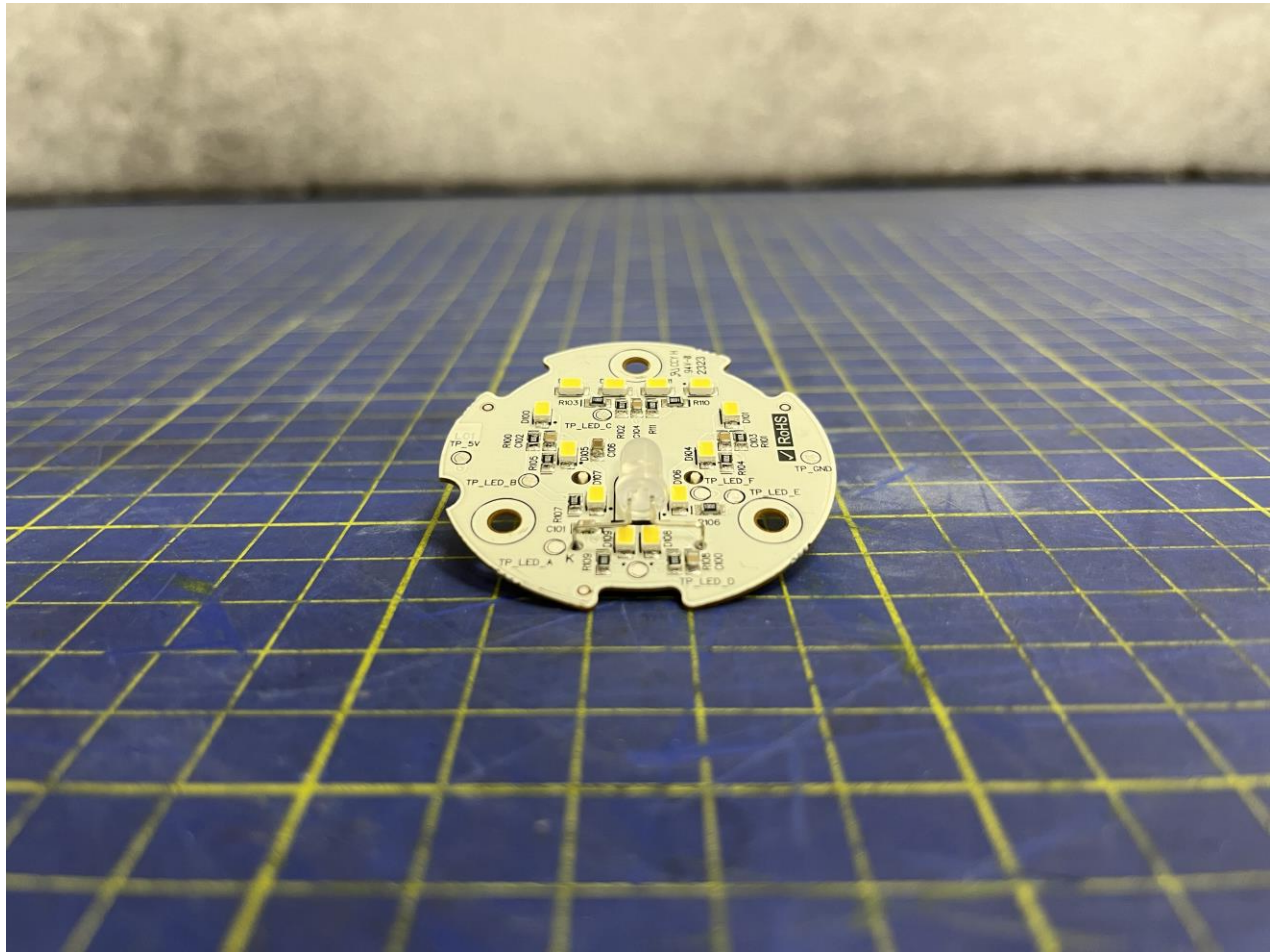




## Rear Wi-Fi Antenna



## Logo PCB (Top)

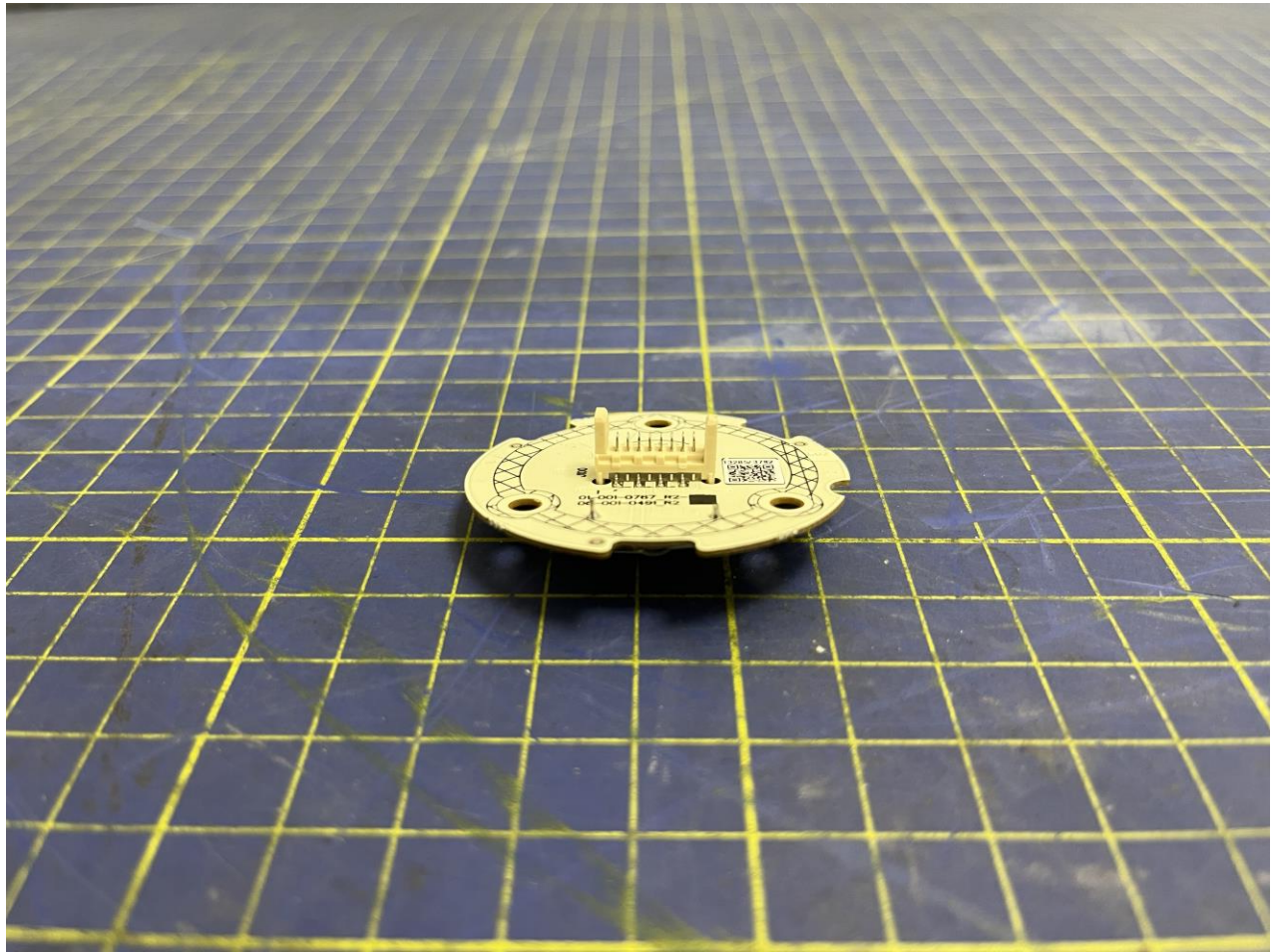


FOCAL

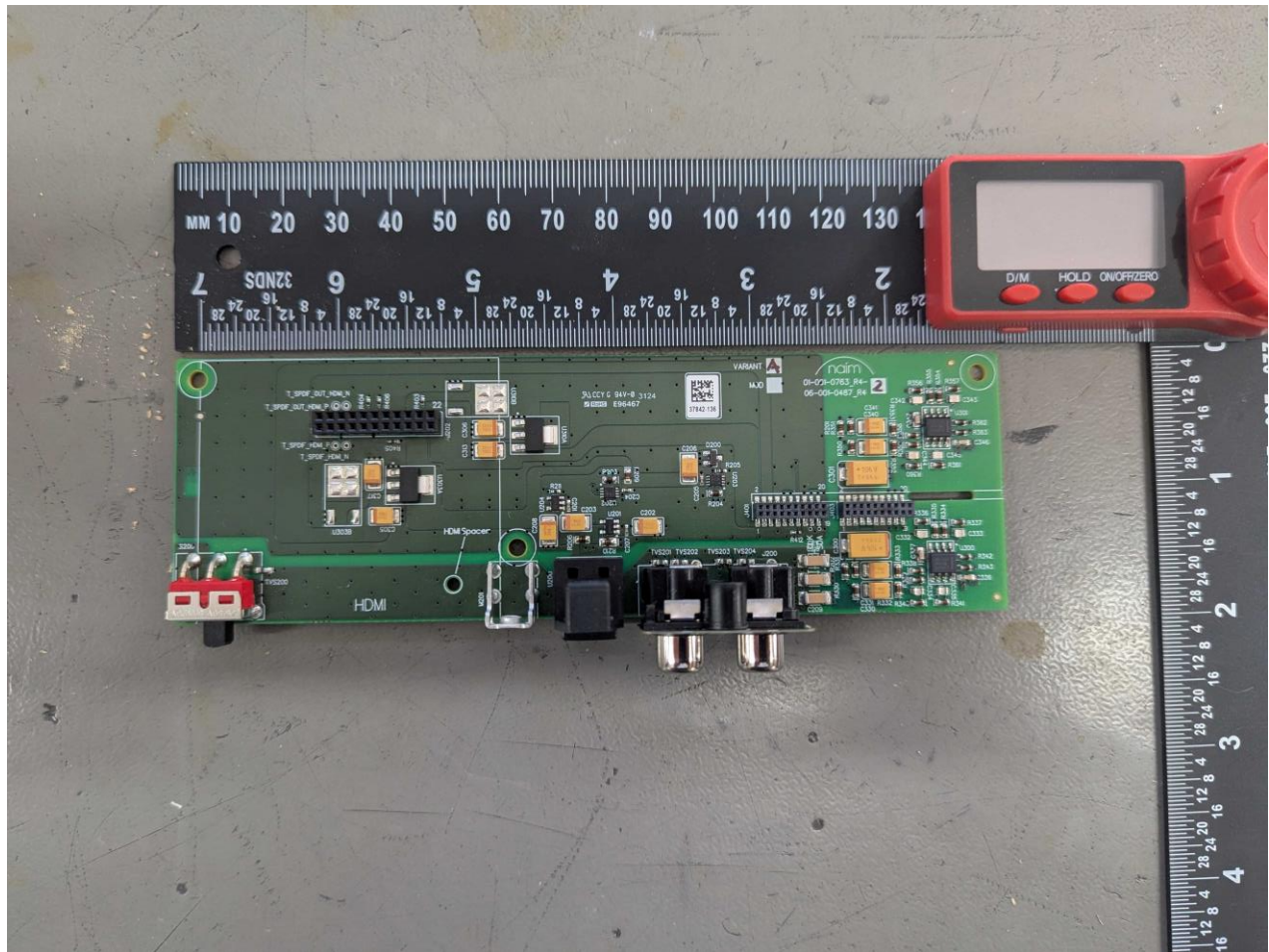




## Logo PCB (Bottom)



## Inputs PCB (Top)

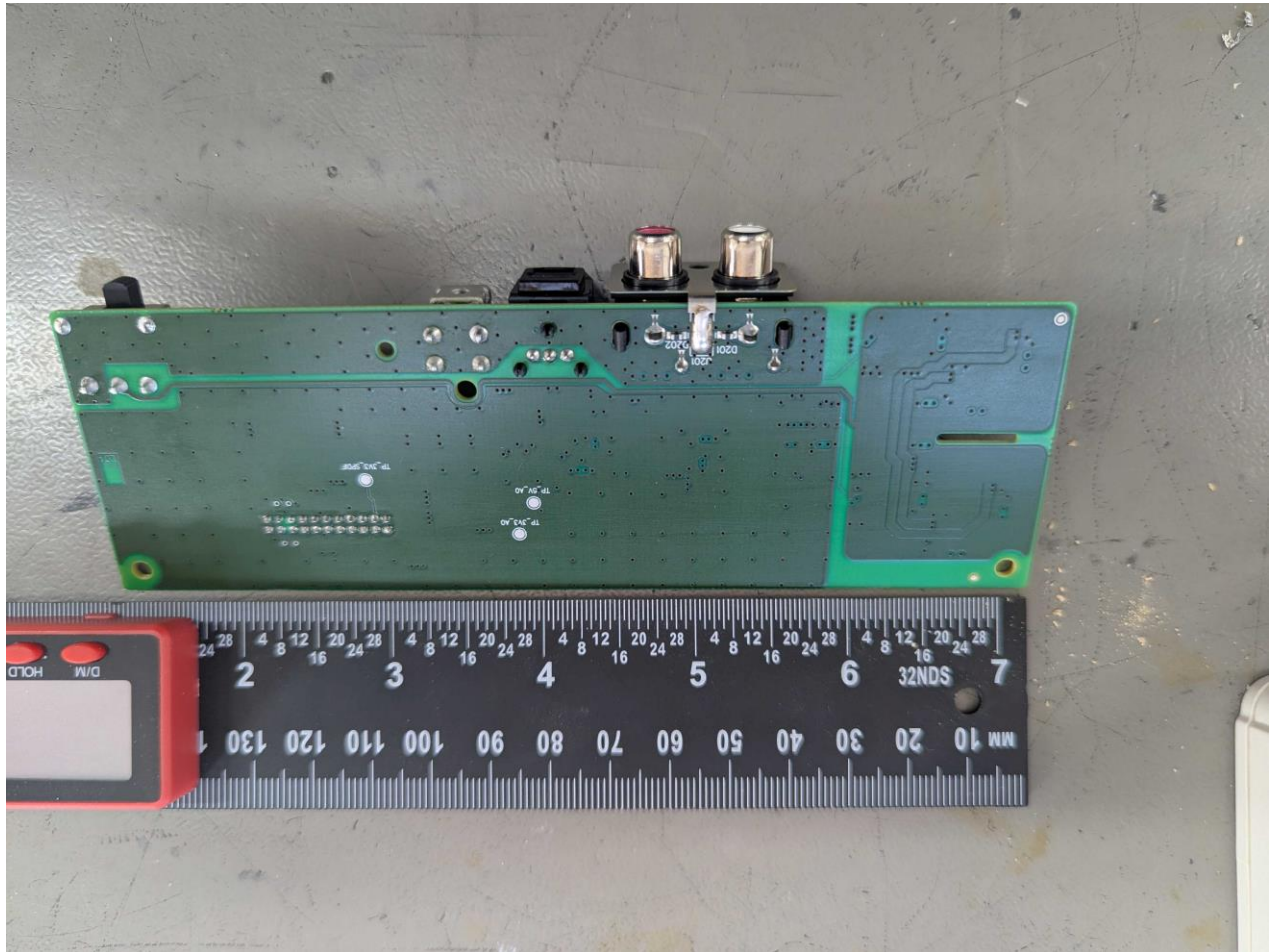


FOCAL

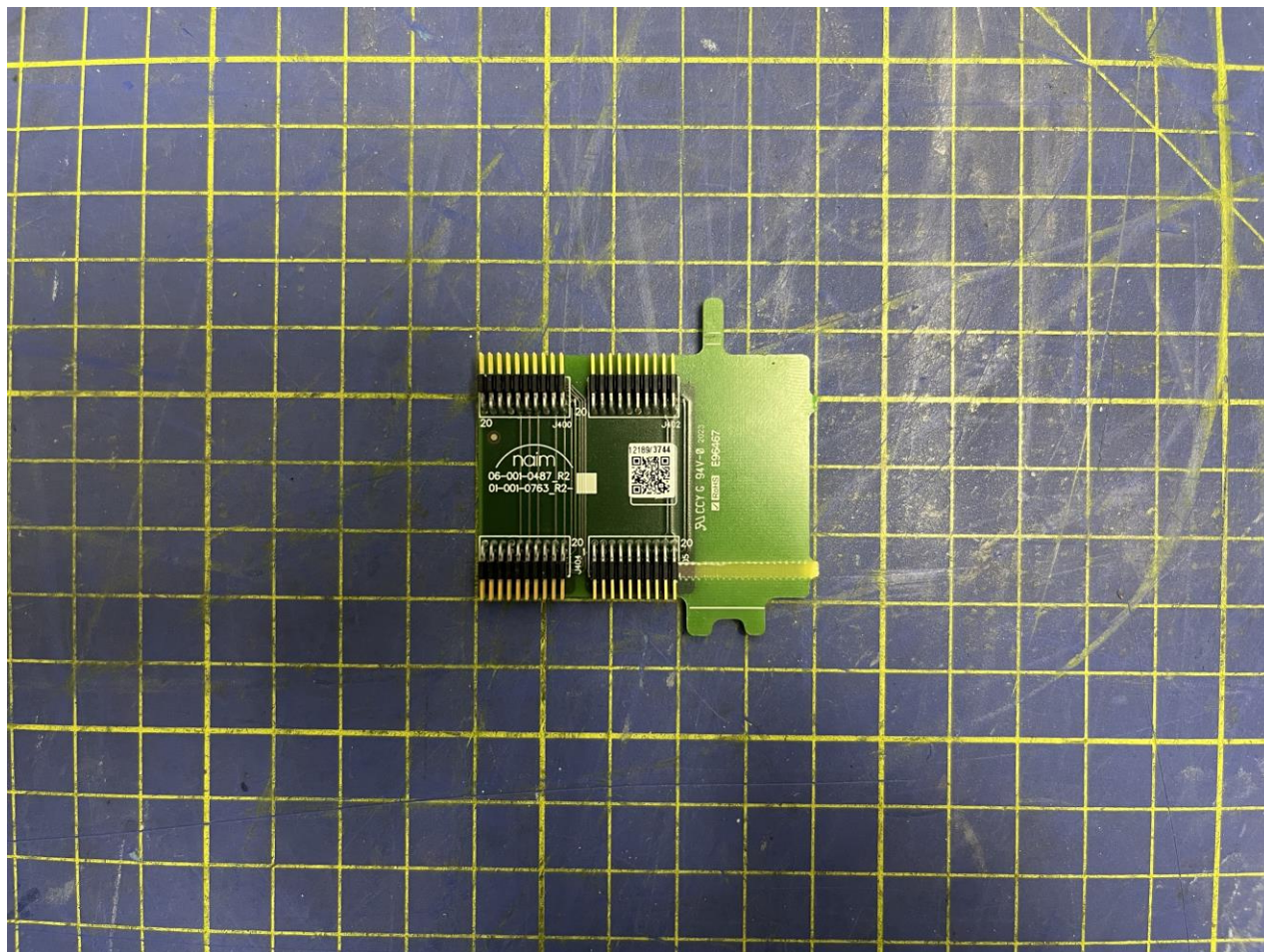




## Inputs PCB (Bottom)



## Inputs Connecting PCB (Top)

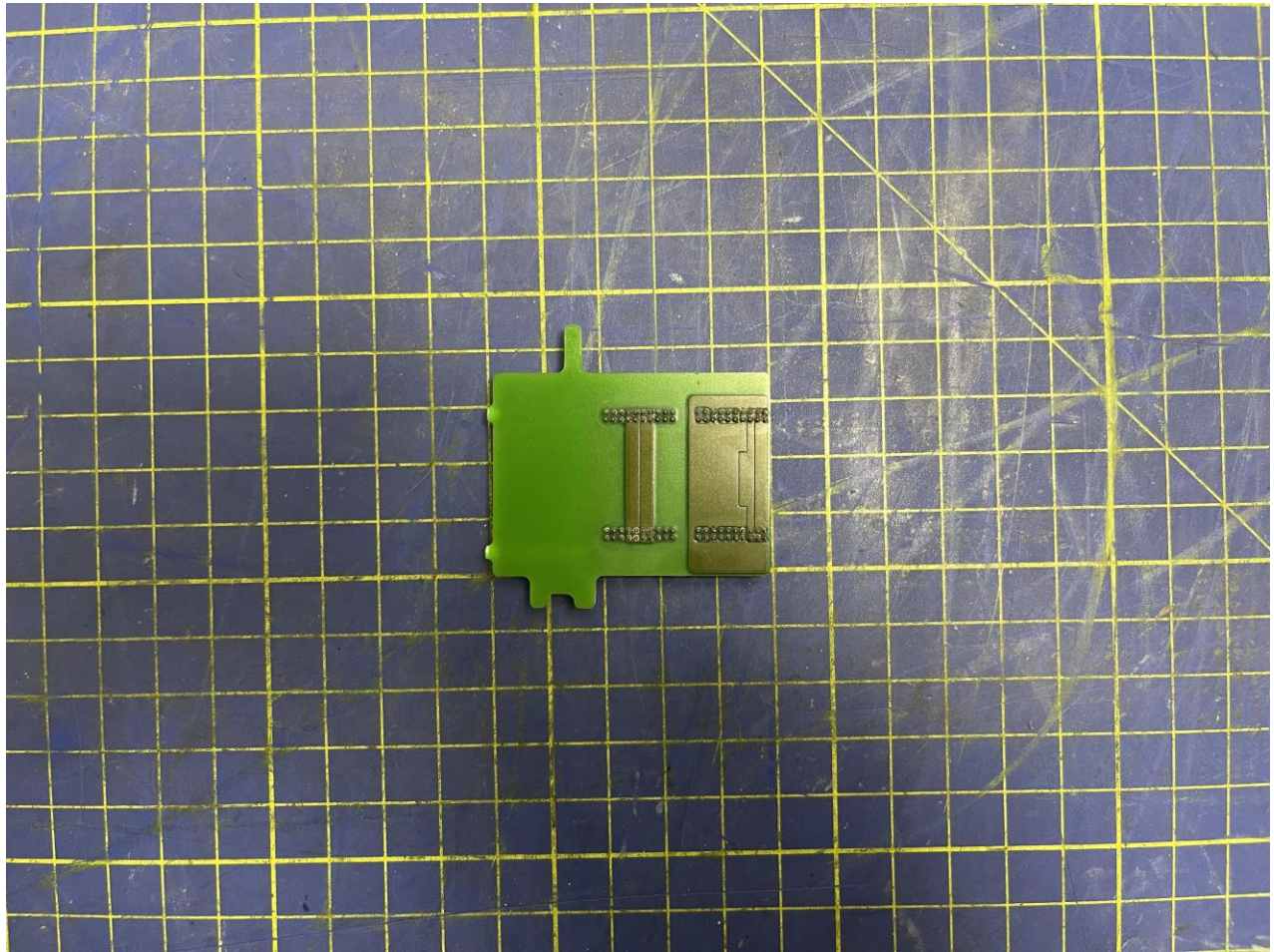


FOCAL





## Inputs Connecting PCB (Bottom)

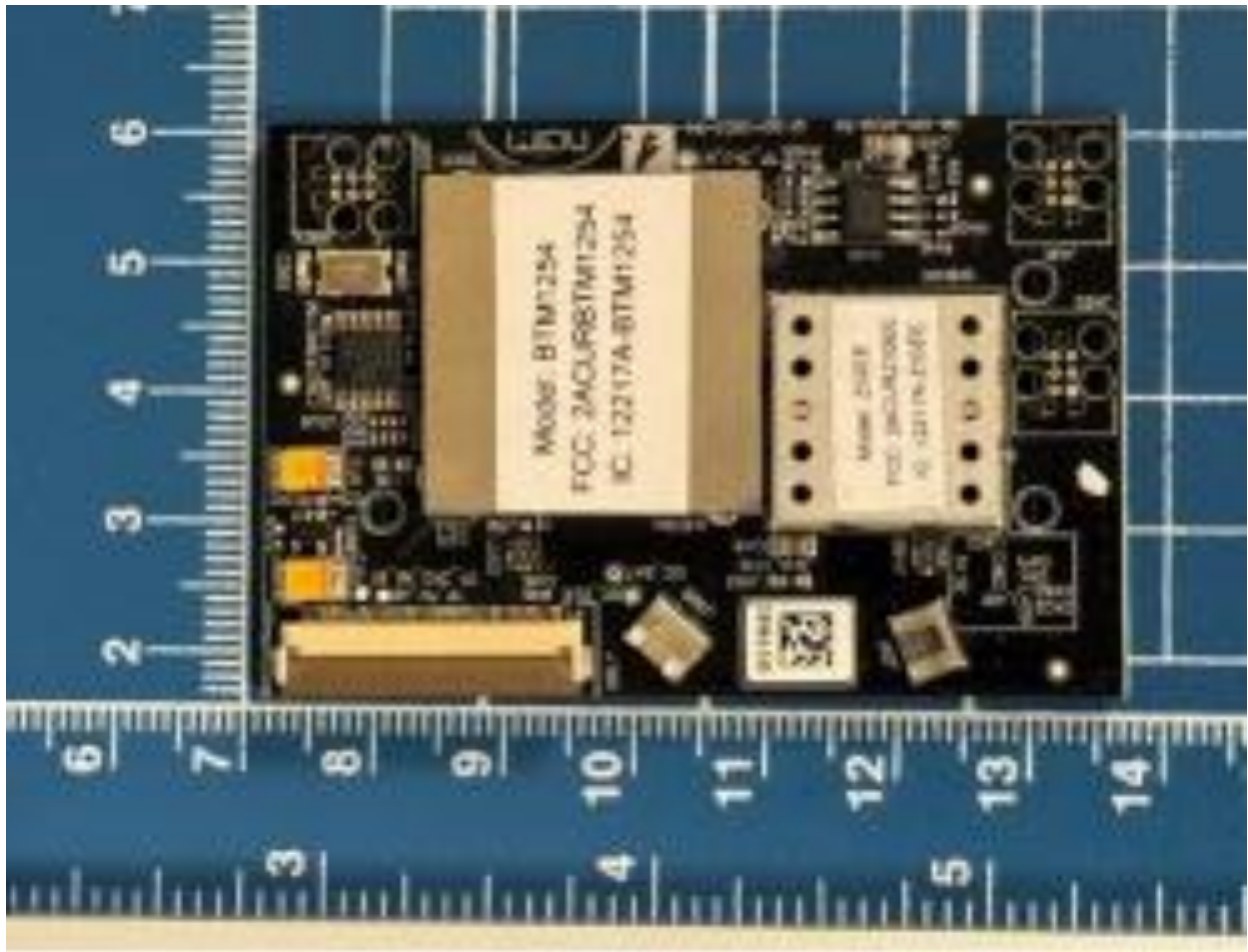


FOCAL



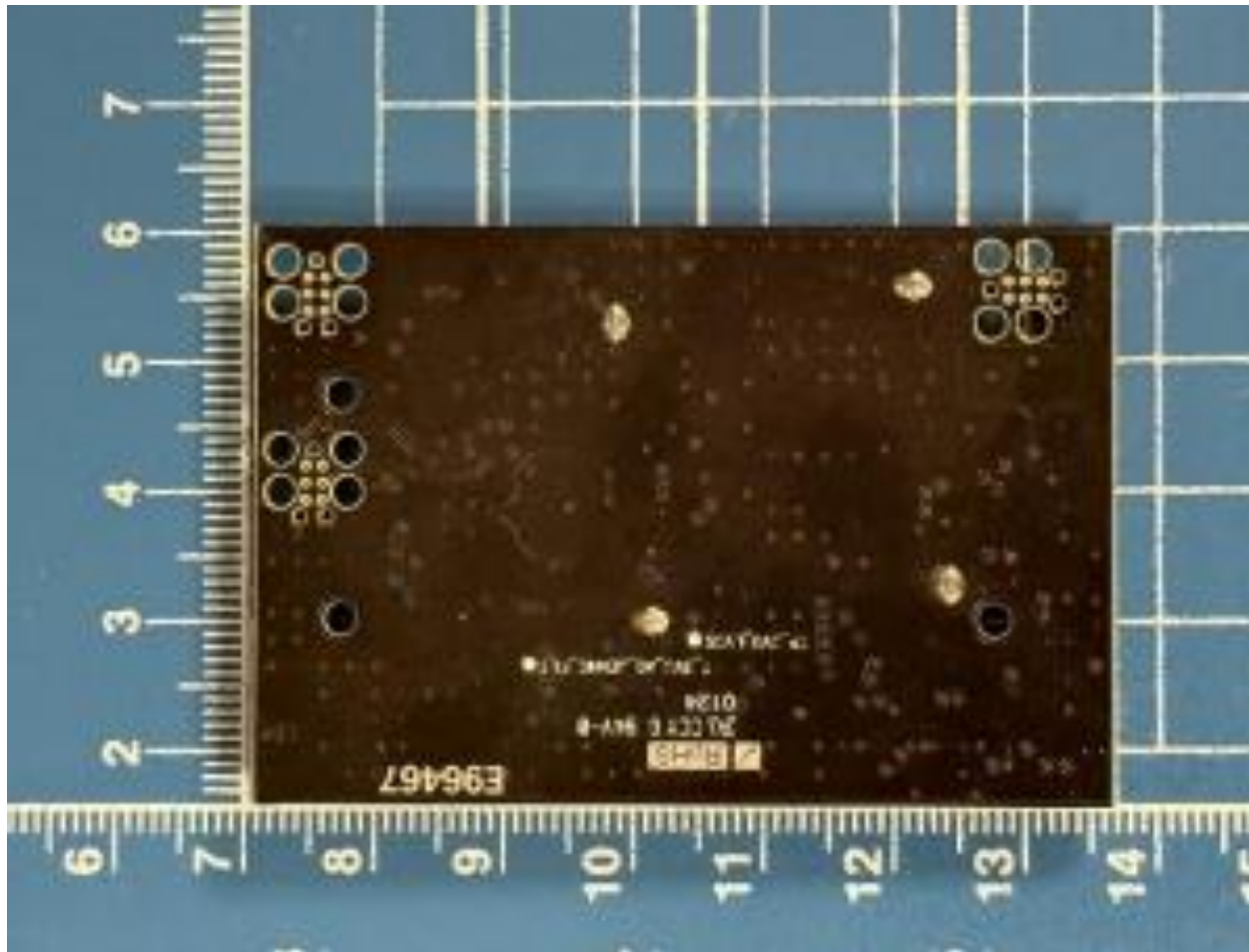
## Radio Modules:

### Bluetooth & Zigbee Card (Front):





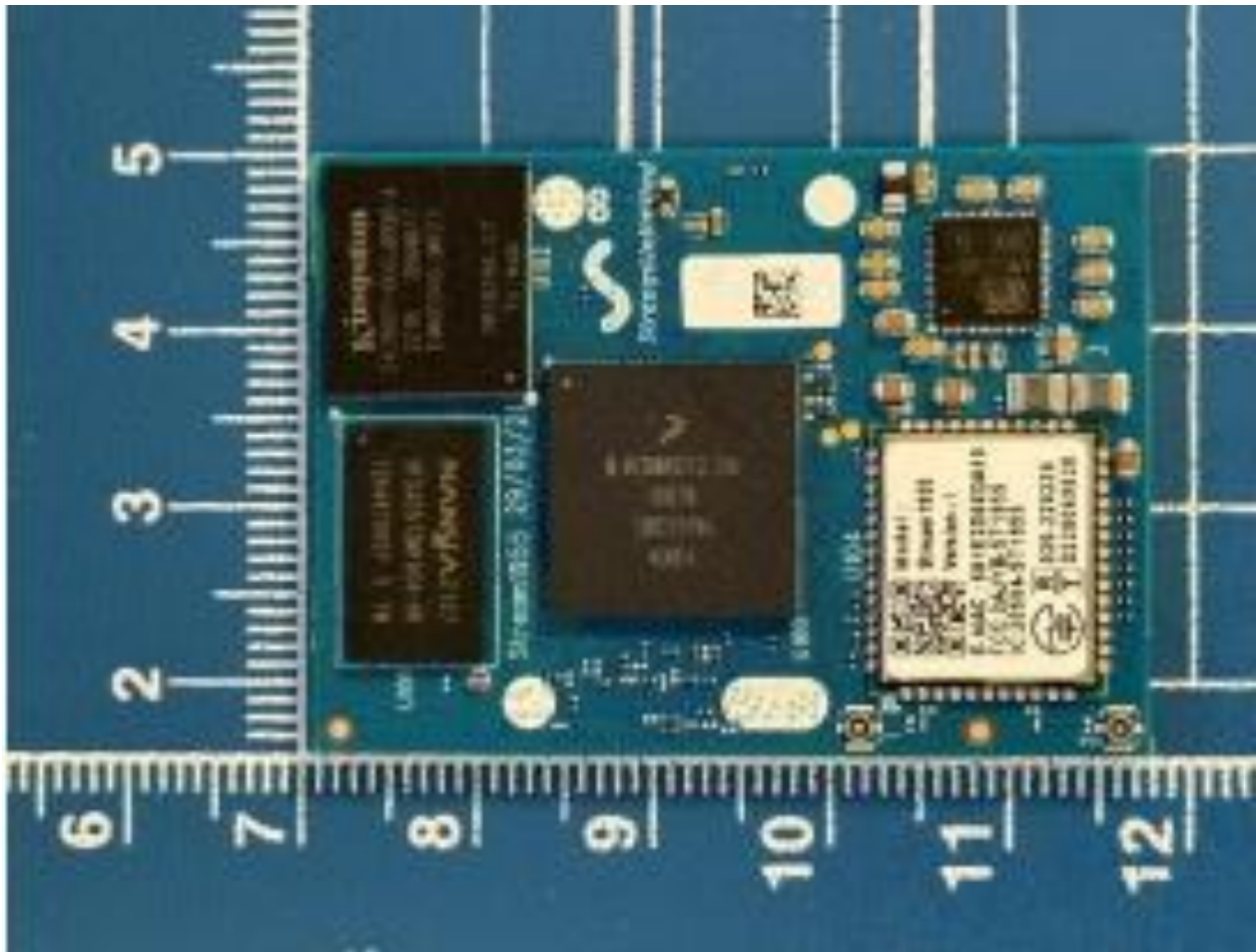
## Bluetooth & Zigbee Card (Bottom):



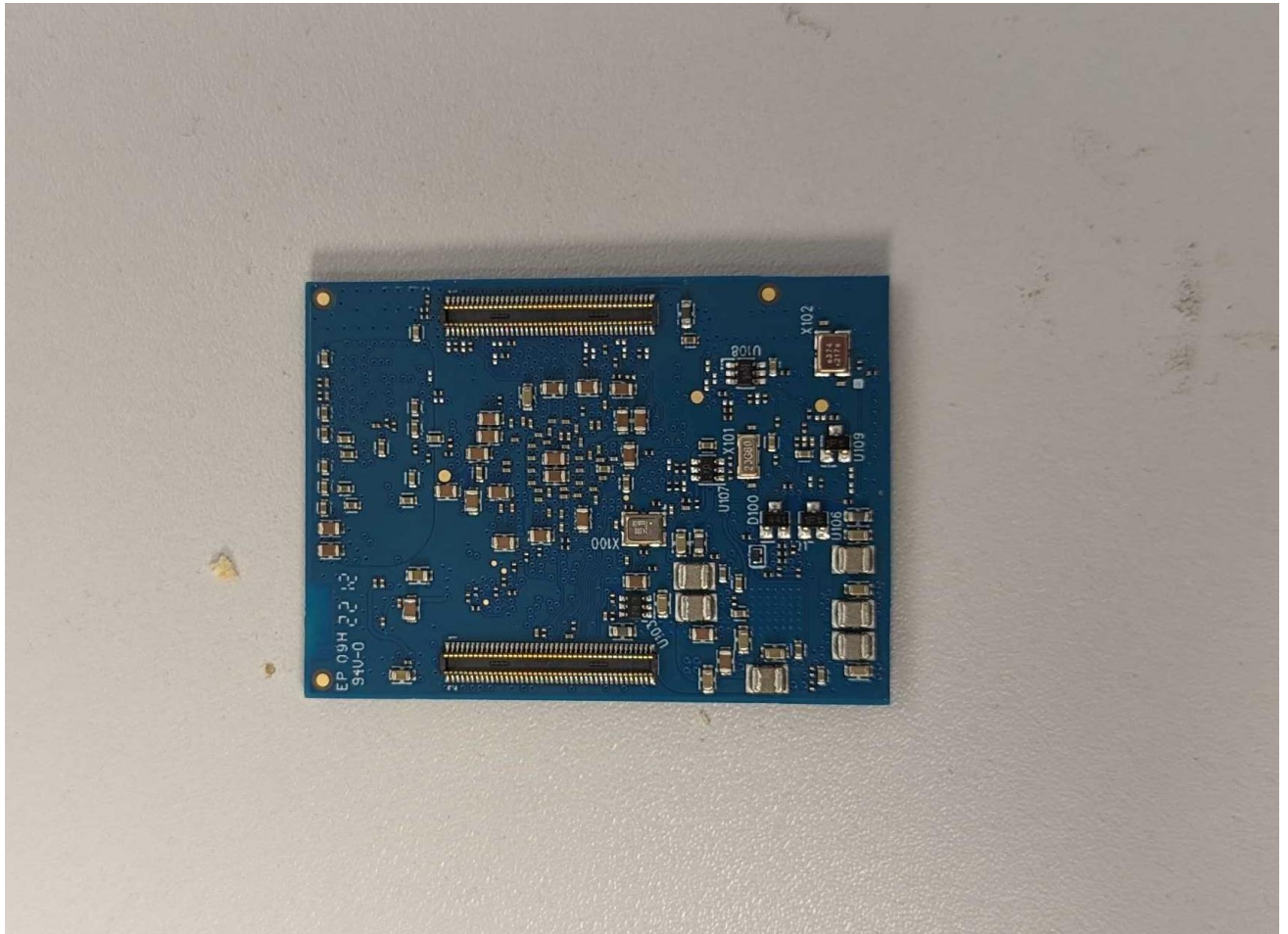
FOCAL



Wi-Fi S1955i module (Top):



Wi-Fi S1955i module (Bottom):

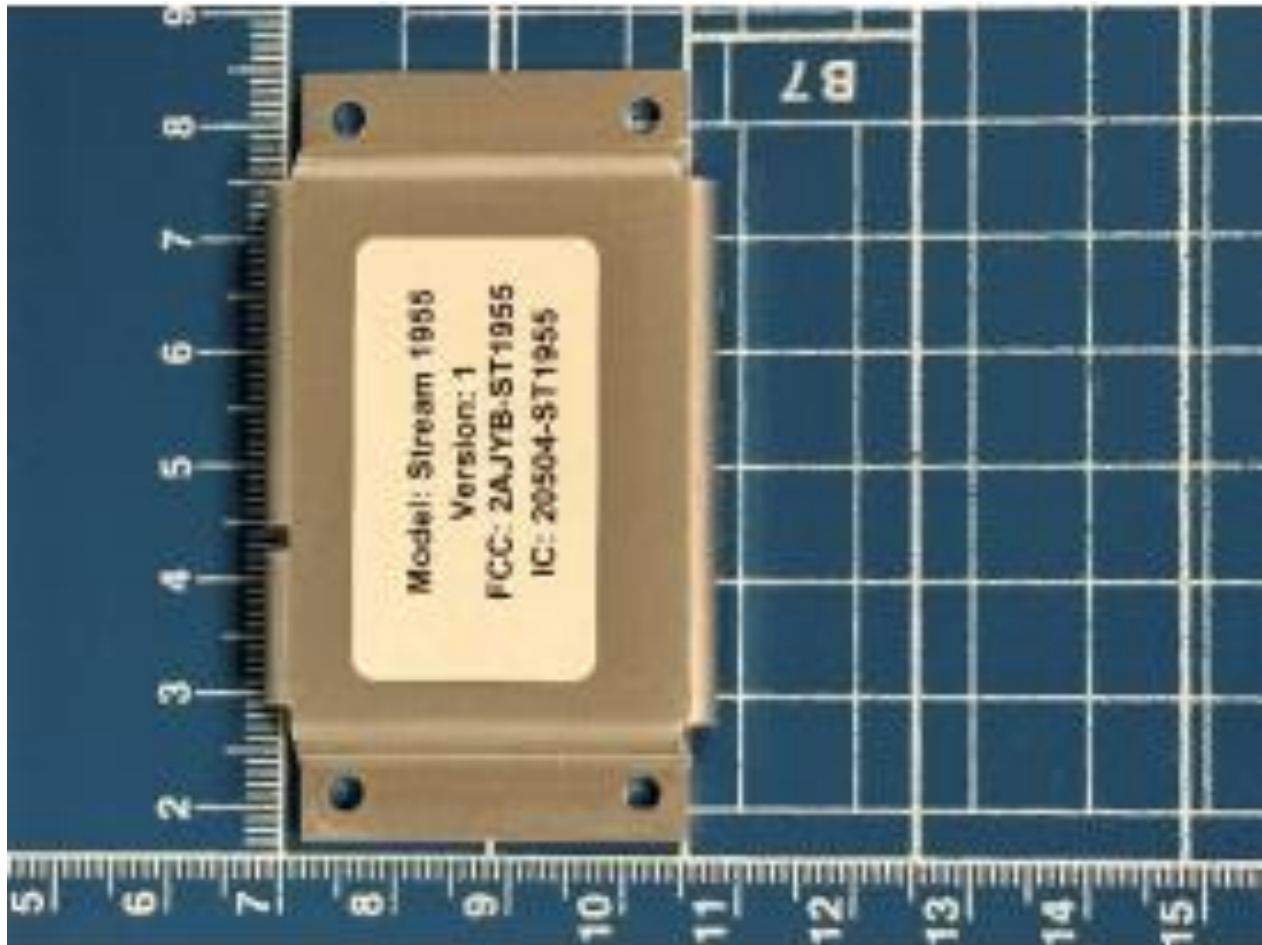


FOCAL





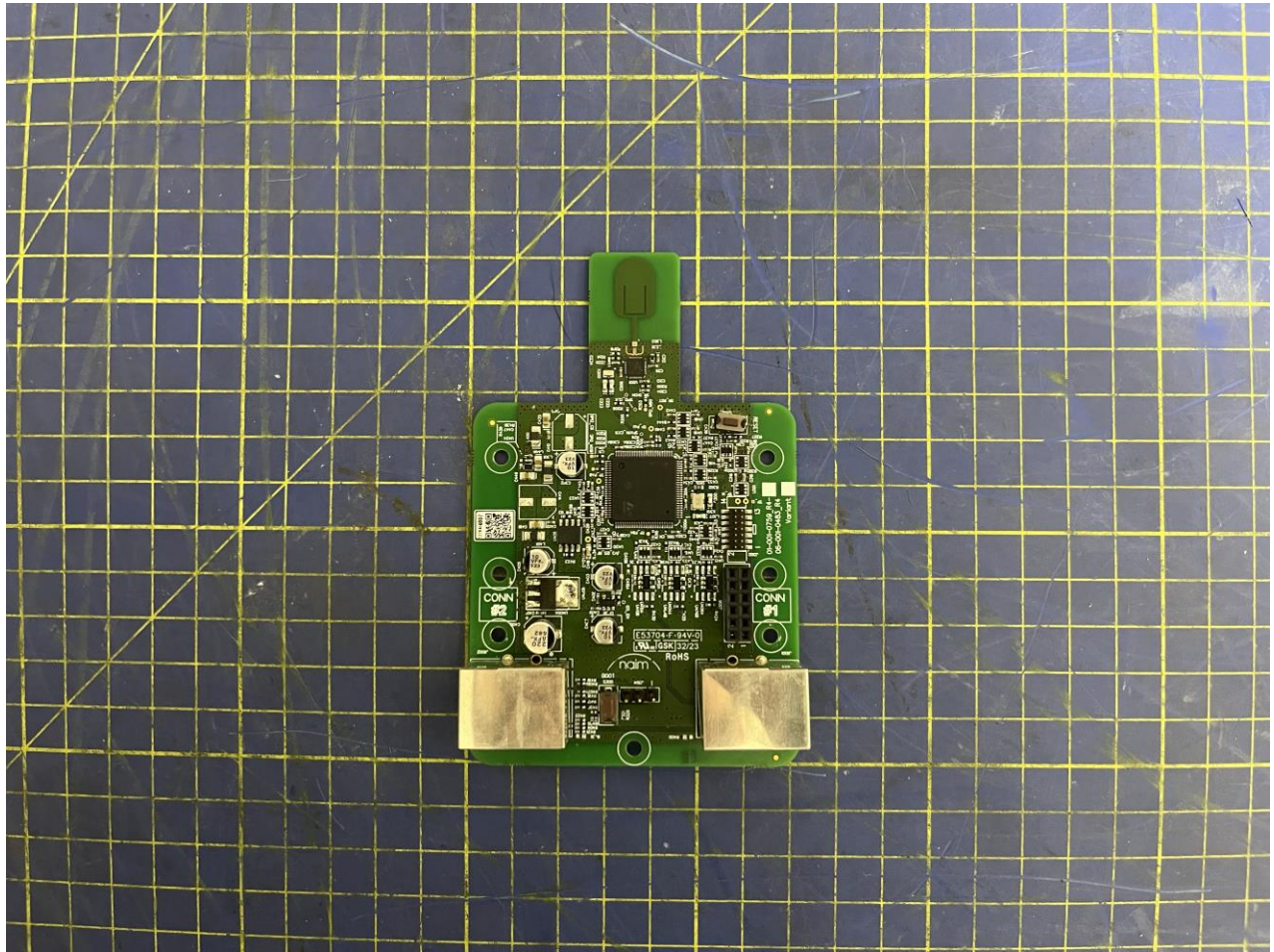
Shield for Wi-Fi S1955i Module:



FOCAL

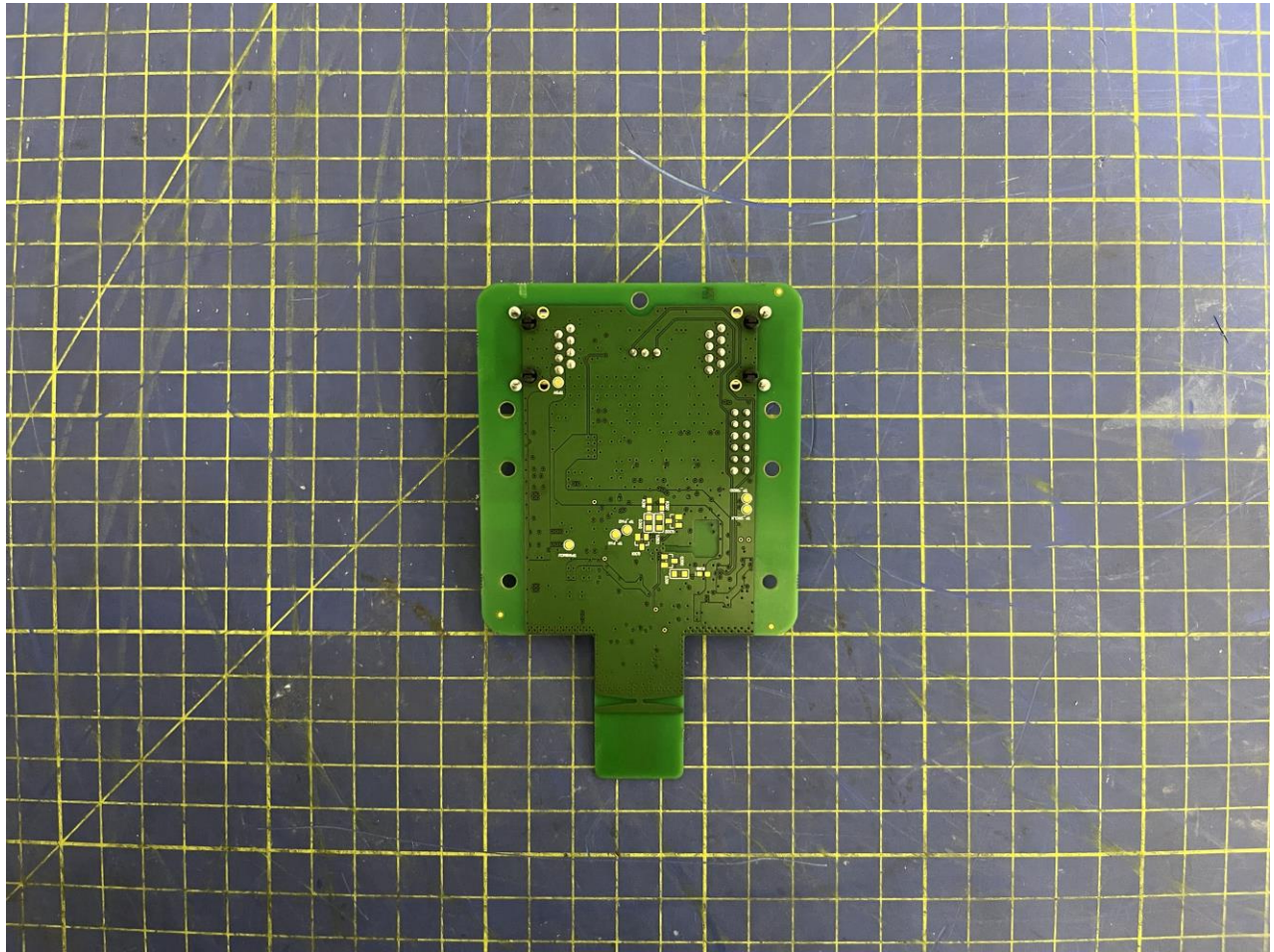


## UWB SR1020 module (Top):





UWB SR1020 module (Bottom):



FOCAL



## Model + All Accessories

Contains the following:

- 1x Wired Backup Link Cable.
- 1x Remote Control
- A set of carpet spikes
- 1x User Manual
- 1x Primary DIVA MEZZA UTOPIA
- 1x Secondary DIVA MEZZA UTOPIA

**FOCAL**