

<b>Quick Guide Installation Steps</b>	
Important information before installation	1
Installation	2
Top plate, display and info codes	3
Check the installation	4
FCC Cautions	5

Kamstrup Water Metering, LLC  
 245 Hemlock Park Drive, Ste. 110  
 Roswell, GA 30076, USA  
 T: +1 (404) 835-6716  
 info-us@kamstrup.com

Think forward

### Important information before installation 1.1

Only **certified installers** are approved to perform installation

Find further information on [kamstrup.com](http://kamstrup.com) / Scan QR code

### Important information before installation 1.2

Permitted water temperature

Maximum operating pressure

Fixed installation with min. vibration. Electromagnetic environmental class: Residential and commercial

### Important information before installation 1.3

35 °F...140 °F

Condensing humidity permitted. (Indoors mounted in utility rooms and outdoors in meter pits). Installation in direct sun and freezing conditions must be avoided

IP68-rated (waterproof-submersible)

### Important information before installation 1.4

The meter can be installed indoors, in a pit or under water, but direct sun should be avoided. Increased ambient temperature can adversely affect battery life

### Ensure correct piping during installation 2.1

Correct meter placement in installation

Connect the correct pipes parallel to the meter!

### Ensure correct pressure during operation 2.2

The meter is filled with water during operation

Water pressure is too low

Avoid entrained air in water

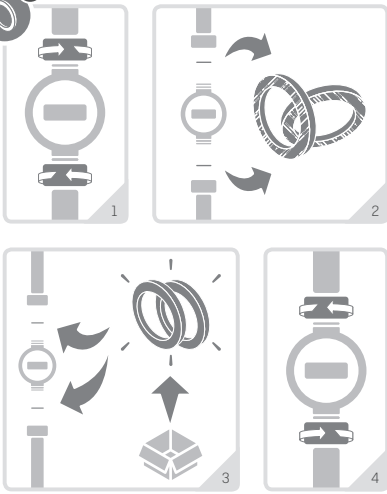
Avoid heavy flow disturbance in the water flow



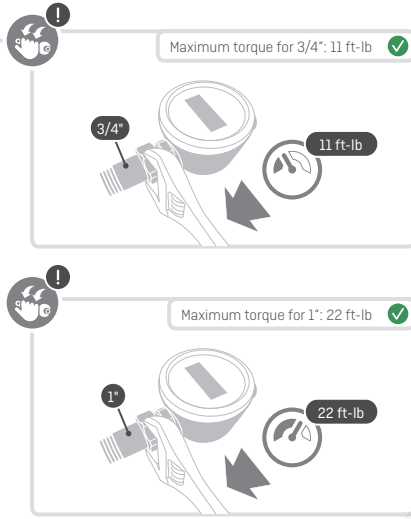
Kamstrup A/S - 55122517\_AL\_US\_FIELDTST\_062019

Kamstrup  
[kamstrup.com](http://kamstrup.com) - [info@kamstrup.com](mailto:info@kamstrup.com)

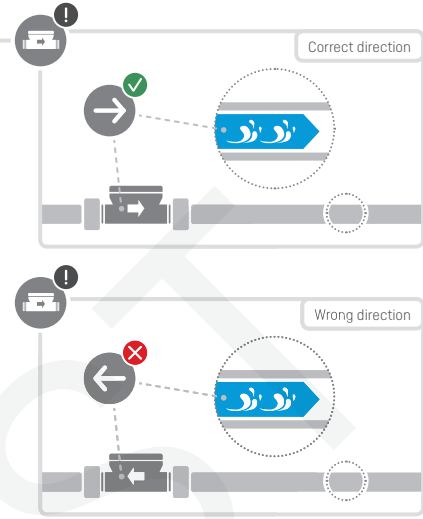
## Replace gaskets when installing new meter 2.3



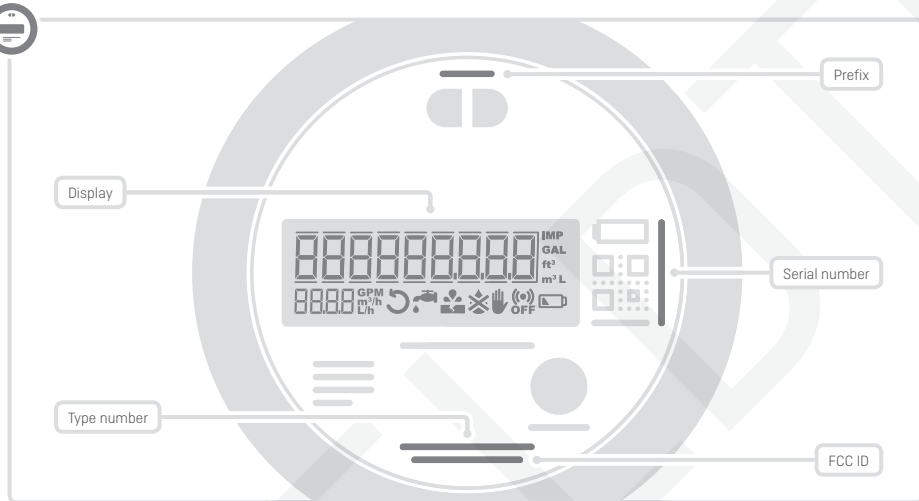
## Important! Be aware of maximum torque 2.4



## Install meter in the correct direction of flow 2.5



## Top plate, display and info codes 3.1



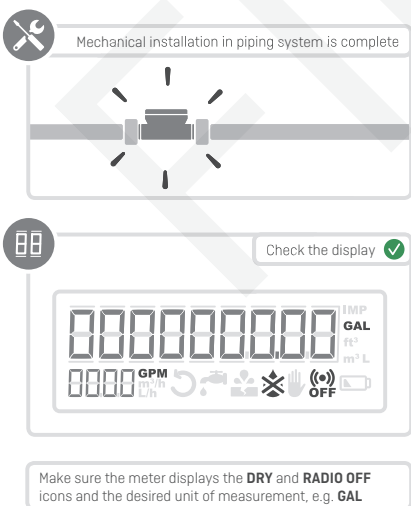
## Display and info codes 3.2

Info code overview in the flowIQ® 2100 display

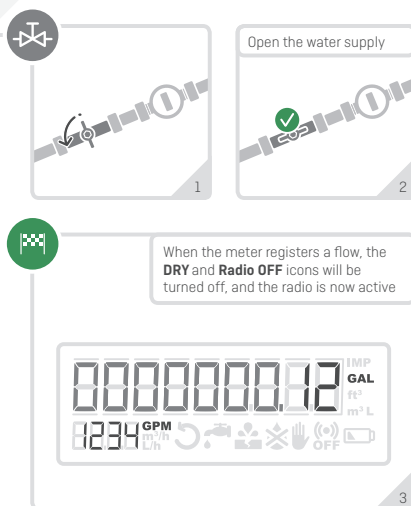
Icon / info code	Meaning
	REVERSE The water flows in reverse direction
	LEAK Possible leak
	BURST Possible broken pipe
	DRY The meter is not filled with water
	TAMPER Attempt of fraud
	BATTERY Expected capacity left is 6 months*
	RADIO OFF The meter is still in transport mode

\* Or capacity reaches or is below 2.9V

## Check the installation 4.1



## Check the installation 4.2



## FCC Cautions 5

**Caution:** Changes or modifications not expressly approved by the party responsible for compliance could void the users authority to operate the equipment.

**RF Exposure compliance statement:** This device may be used with no restrictions, since the source-based time-averaged output power is  $\leq 60/f(\text{GHz})$  mW.

**This device complies with Part 15 of the FCC Rules.**

**Operation is subject to the following two conditions:**

- 1 This device may not cause harmful interference, and
- 2 This device must accept any interference received, including interference that may cause undesired operation.

www.kamstrup.com