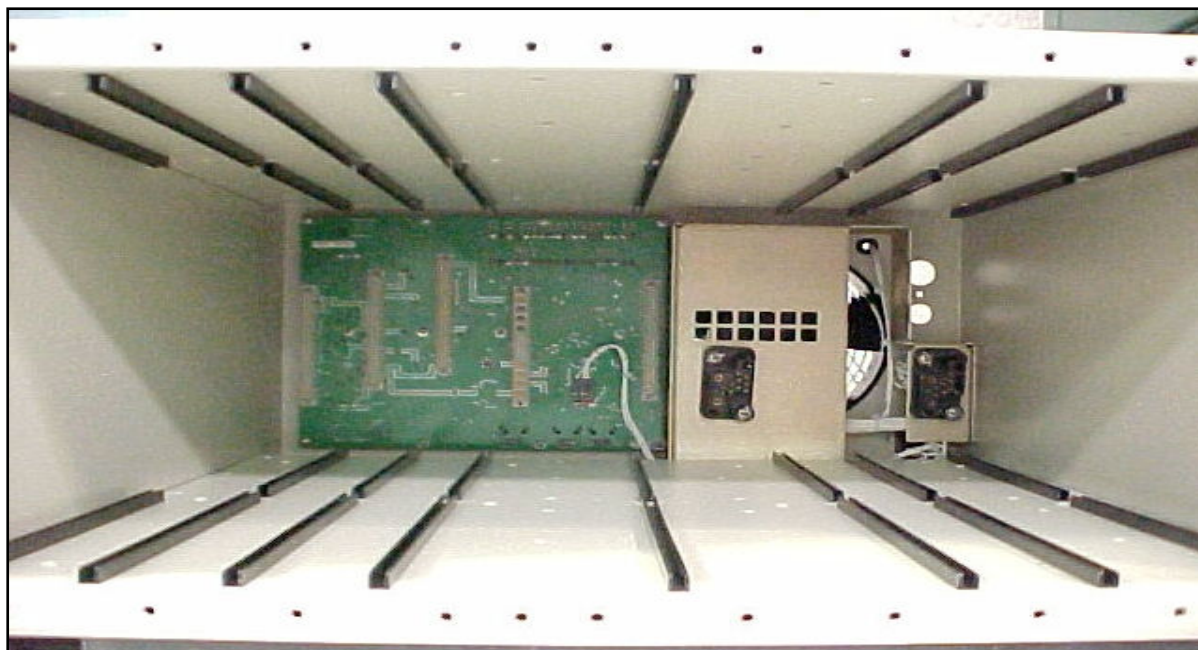
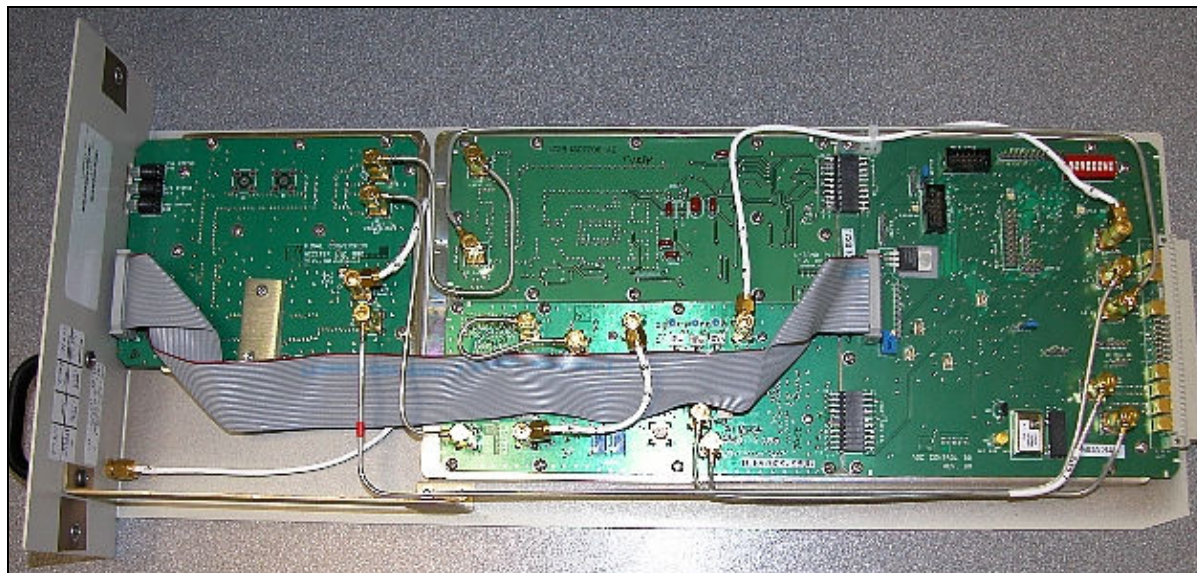


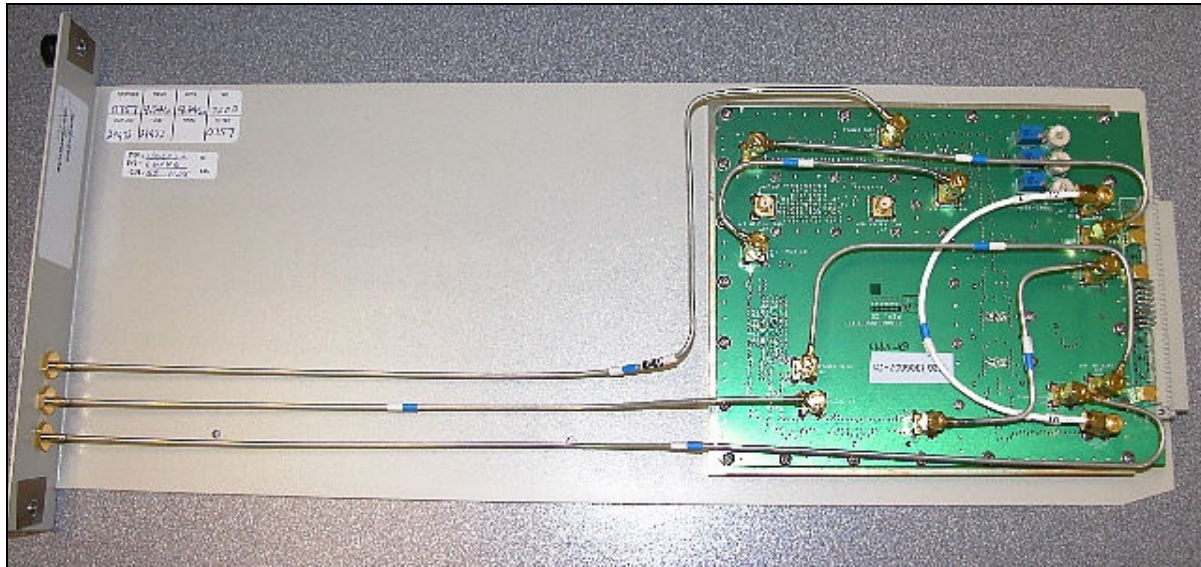
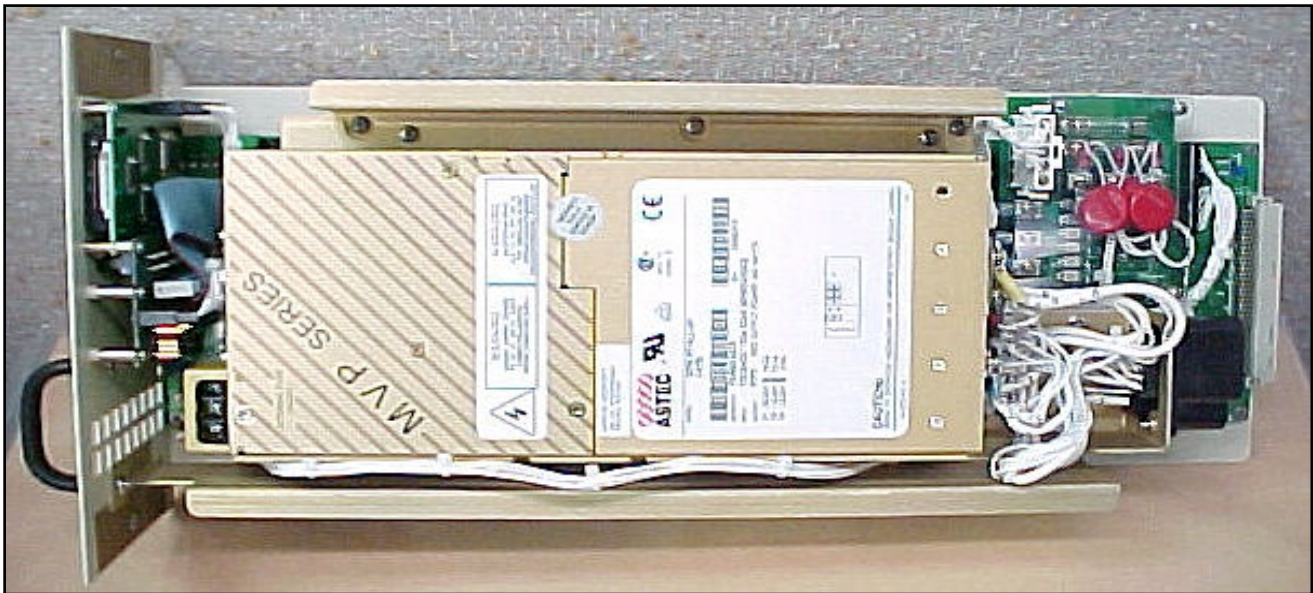
6. INTERNAL PHOTOS

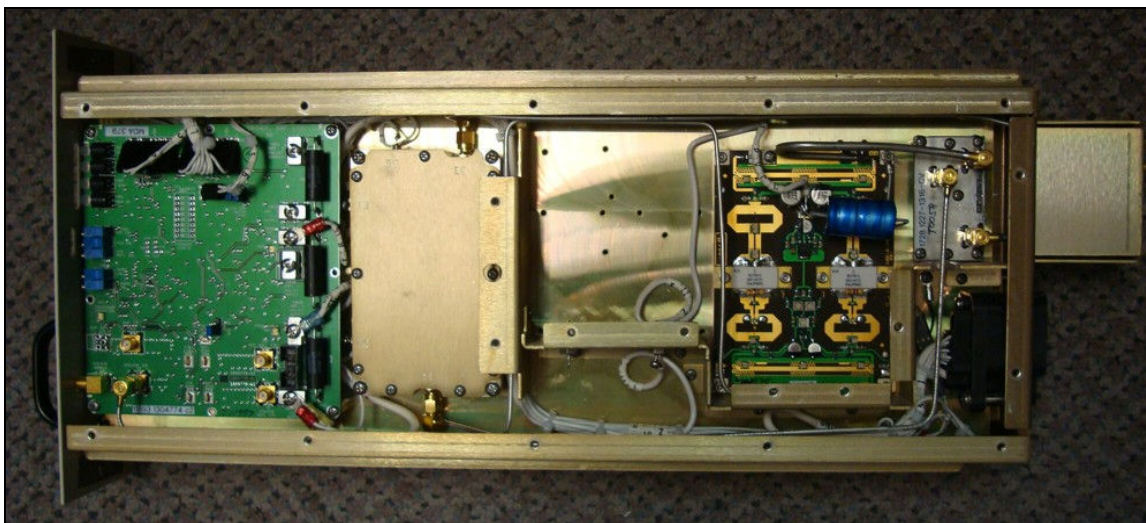
6.1 Front view – Exciter Chassis Assembly - Empty



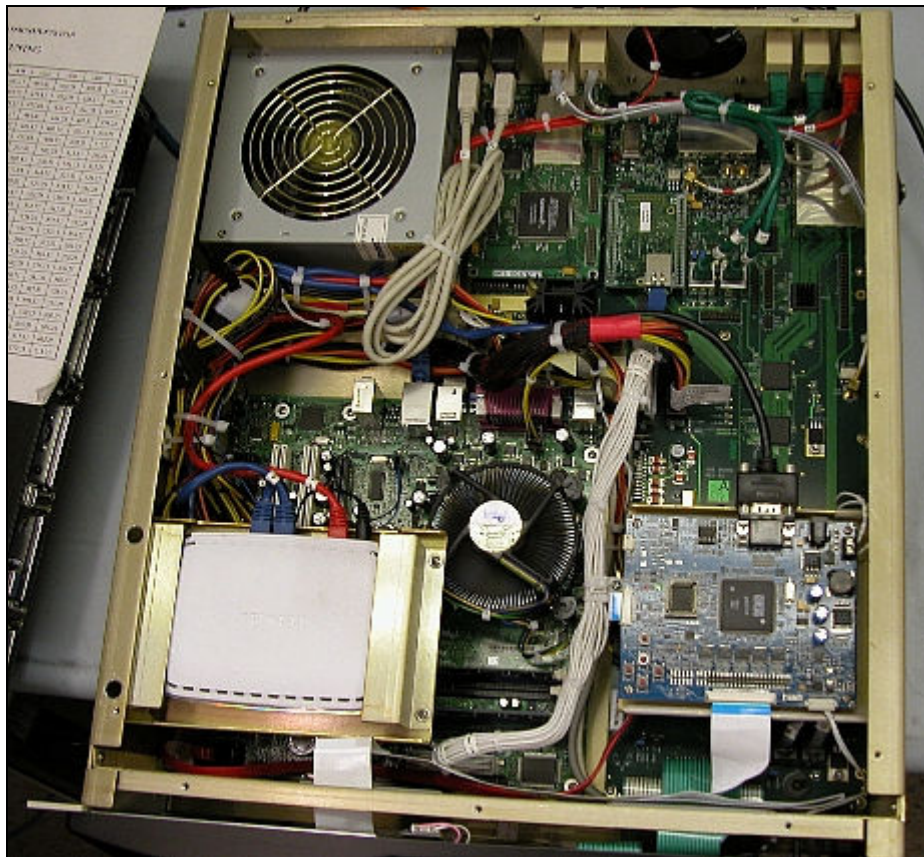
6.2 Side view – Axciter Upconverter Assembly (Exciter) - Used with Axciter Modulator



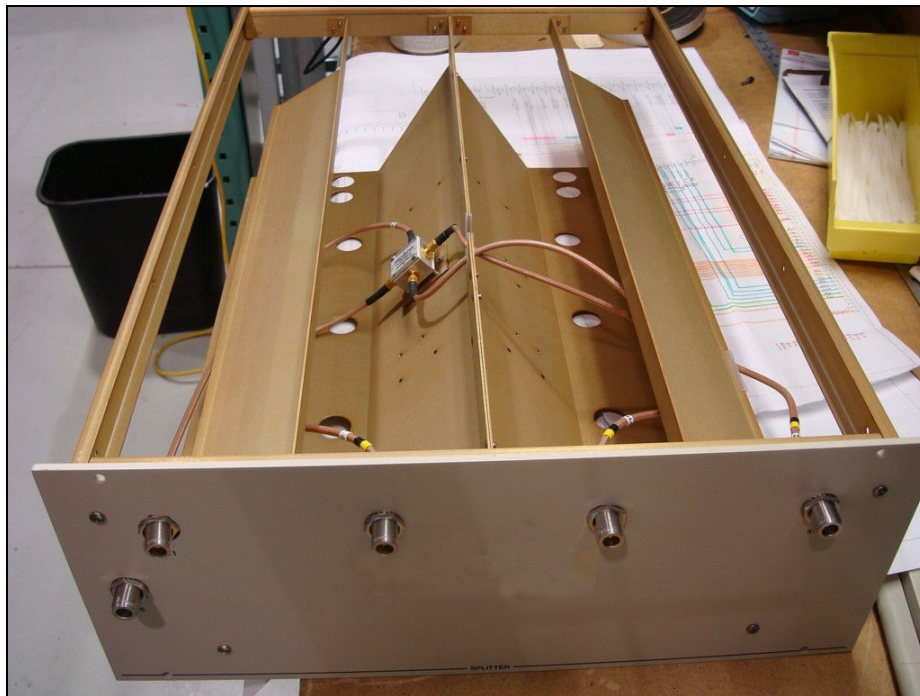
6.3 Side view – Axciter Downconverter Assembly (Exciter) - Used with Axciter Modulator**6.4 Side view - Control / Power Supply Assembly (Exciter)**

6.5 Side view - Power Amplifier Assembly (Exciter)**6.6 Front view – Exciter Chassis Assembly – Populated**

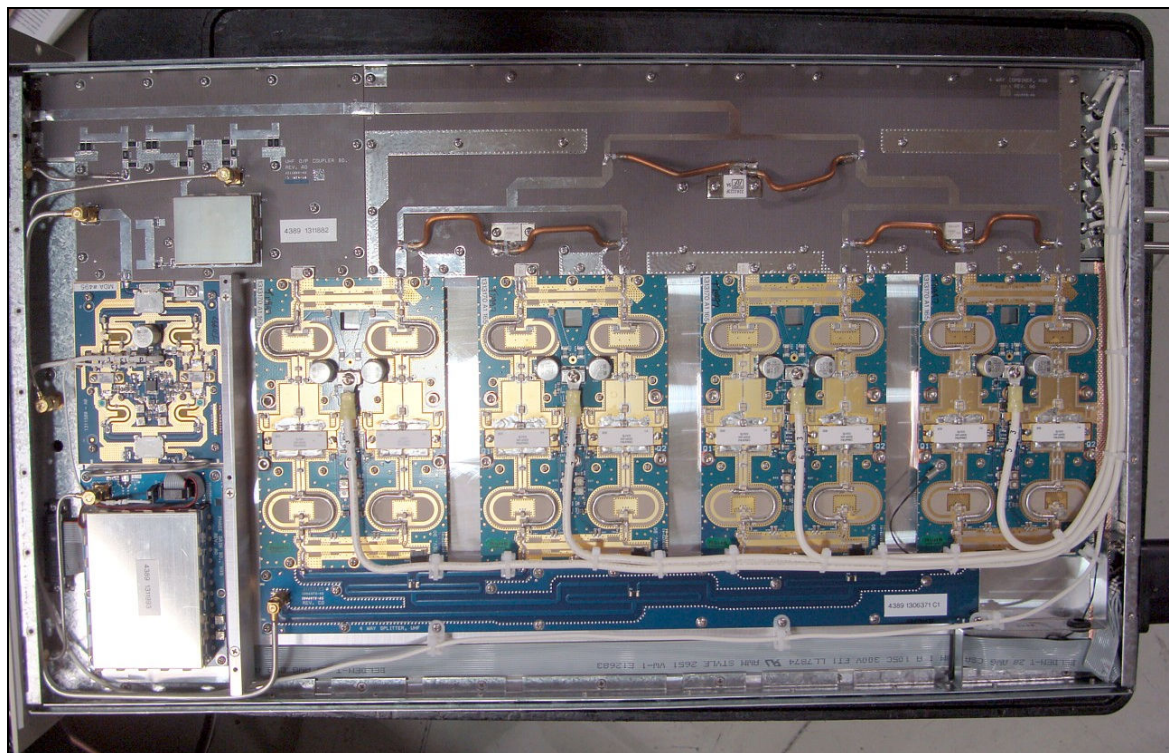
6.7 Top view – External Axciter Digital Modulator



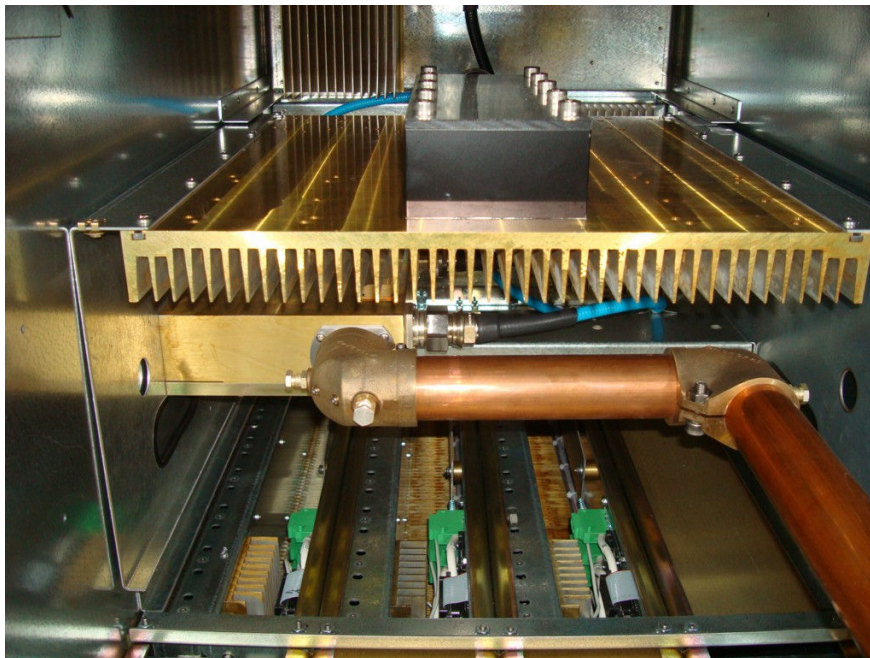
6.8 Front view – 4-Way Splitter Assembly x2 (RF Amplifier Cabinet)



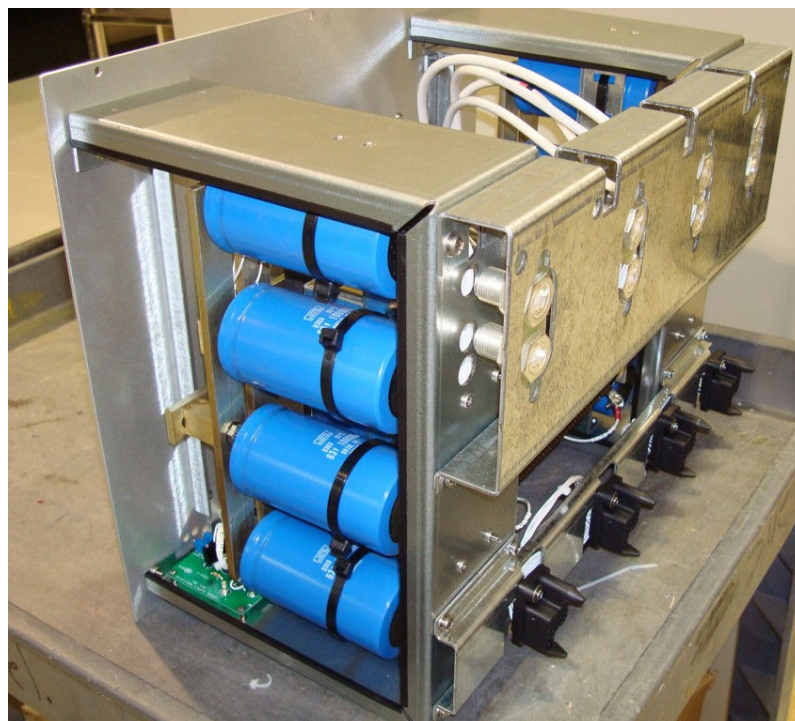
6.9 Side view - Power Amplifier Assembly x8 (RF Amplifier Cabinet)



6.10 Rear view – 8-Way Combiner Assembly (RF Amplifier Cabinet)



6.11 Side view – PA Power Supply Assembly x2 (RF Amplifier Cabinet)



6.12 Front view – AC Power Supply Assembly x2 (RF Amplifier Cabinet)**6.13 Front view – Load Regulator Assembly (RF Amplifier Cabinet)**