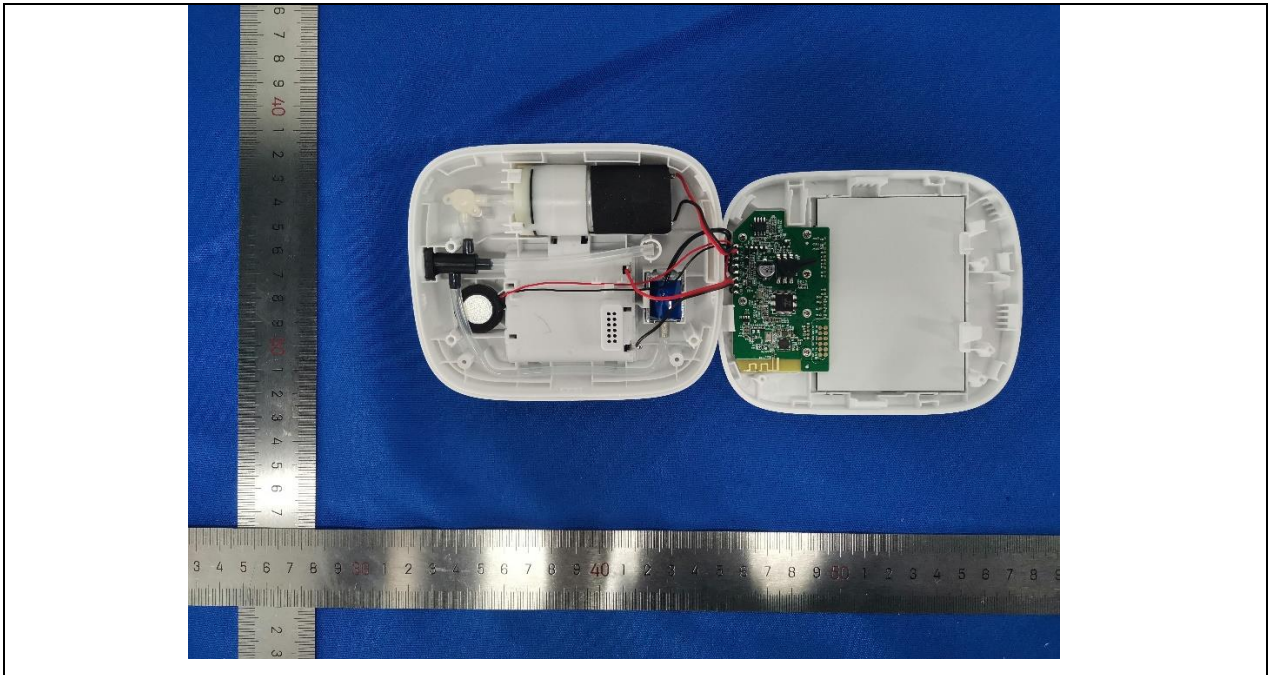


## Internal Photos

Details of: Internal view 1 (Model: BBZ32-AA01)



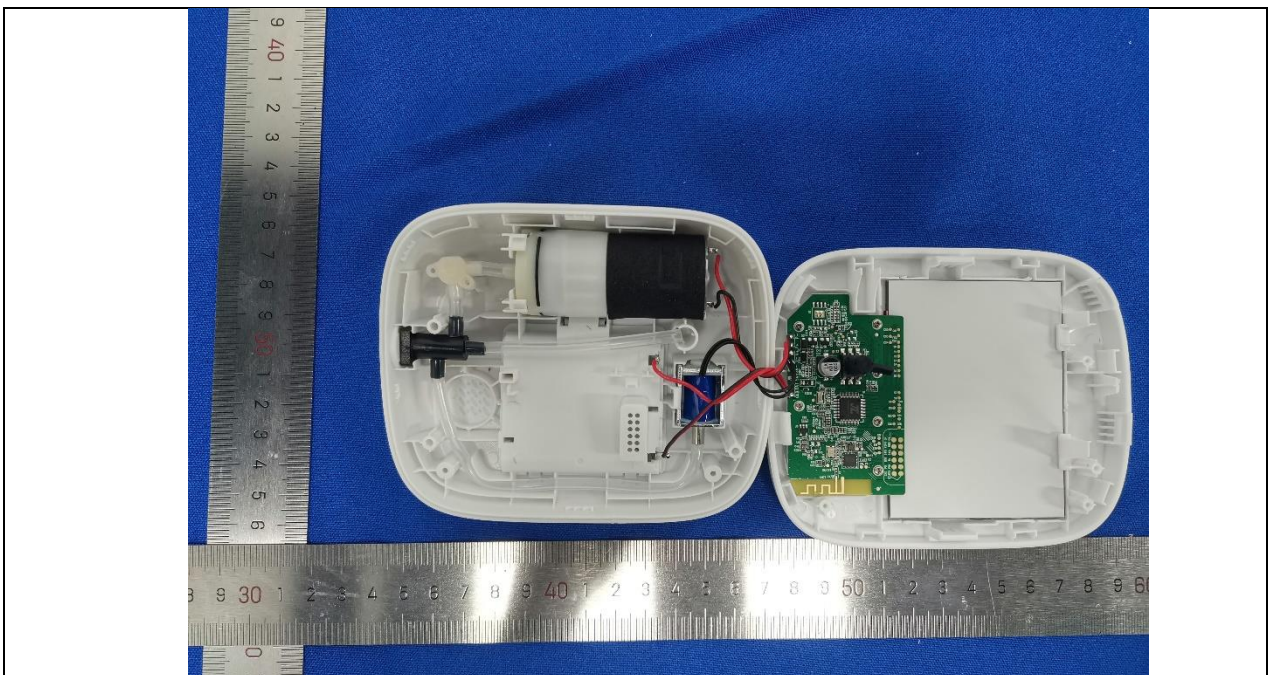
Details of: Internal view 1 (Model: BBZ32-AB01)



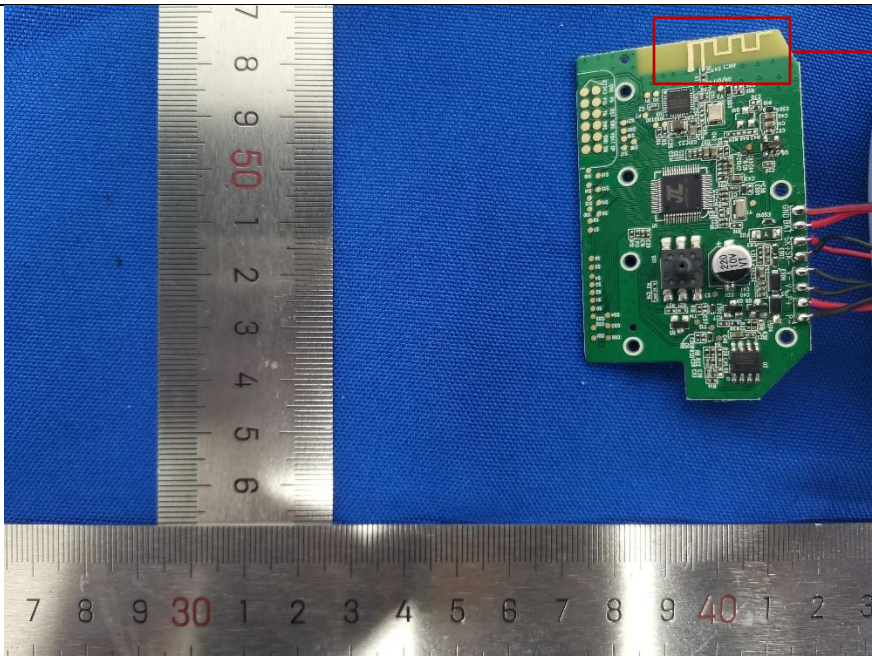
Details of: Internal view 1 (Model: BBZ32-BB01)

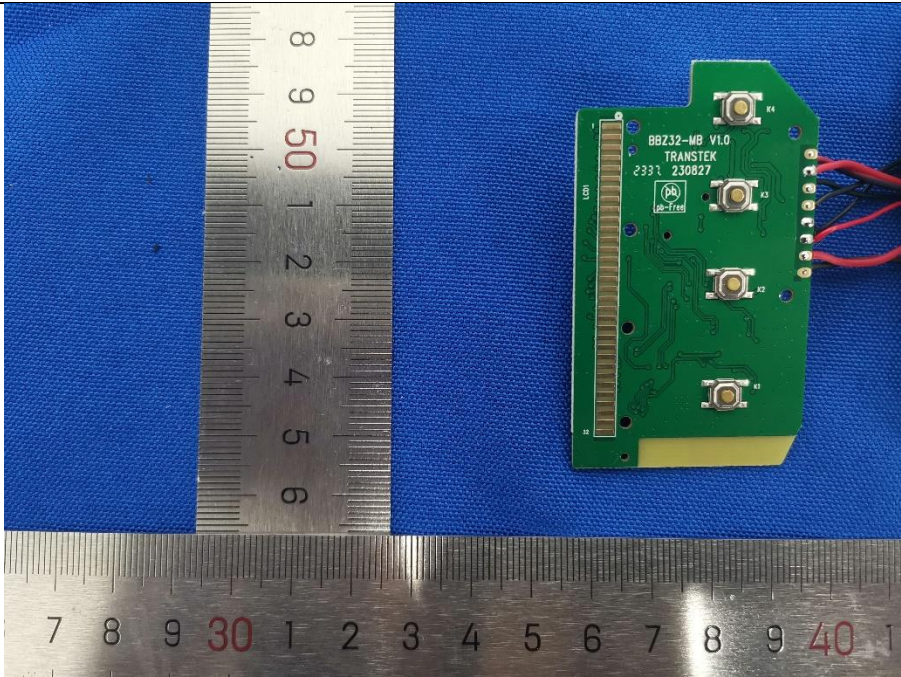


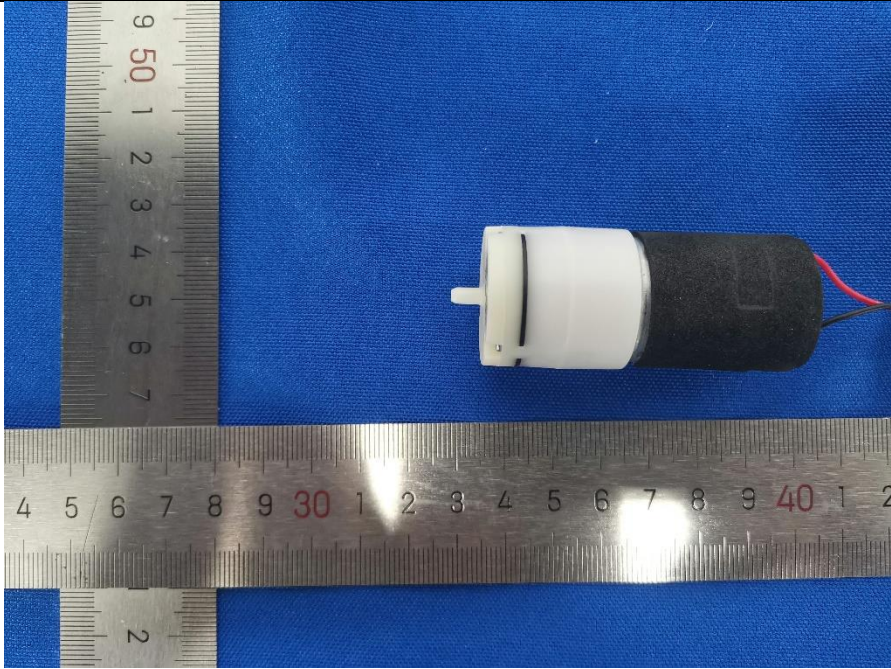
Details of: Internal view 1 (Model: BBZ32-DB01)

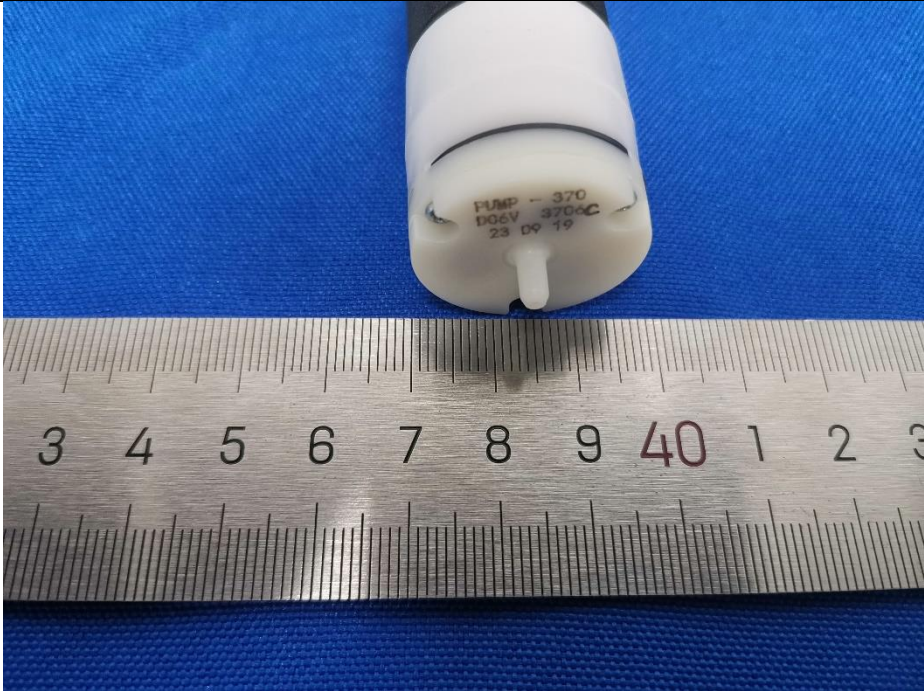




Details of:	Top view of main board (for all models)
	 <p>The image shows the top view of a green printed circuit board (PCB) with various electronic components. A silver ruler is placed horizontally below the board for scale. The board has a yellow antenna patch at the top right, which is highlighted by a red box and labeled "BT Antenna". The board is populated with several integrated circuits, capacitors, and other surface components. The background is a blue textured surface.</p>

Details of:	Rear view of main board (for all models)
	 <p>The image shows the rear view of the same green PCB. It features a long gold-plated edge connector on the left side. Four silver-colored SMA connectors are visible, labeled J1, J2, J3, and J4. The PCB is marked with "BBZ32-MB V1.0", "TRANSTEK", and "2331 230827". A silver ruler is placed horizontally below the board for scale. The background is a blue textured surface.</p>

Details of:	DC motor (for all models)
	

Details of:	DC motor (for all models)
	



Details of:	Solenoid valve (for all models)
	