

## External Photos

Details of: External view 1 (Model: BBZ32-AA01)



Details of: External view 2 (Model: BBZ32-AA01)



Details of: External view 3 (Model: BBZ32-AA01)



Details of: External view 4 (Model: BBZ32-AA01)

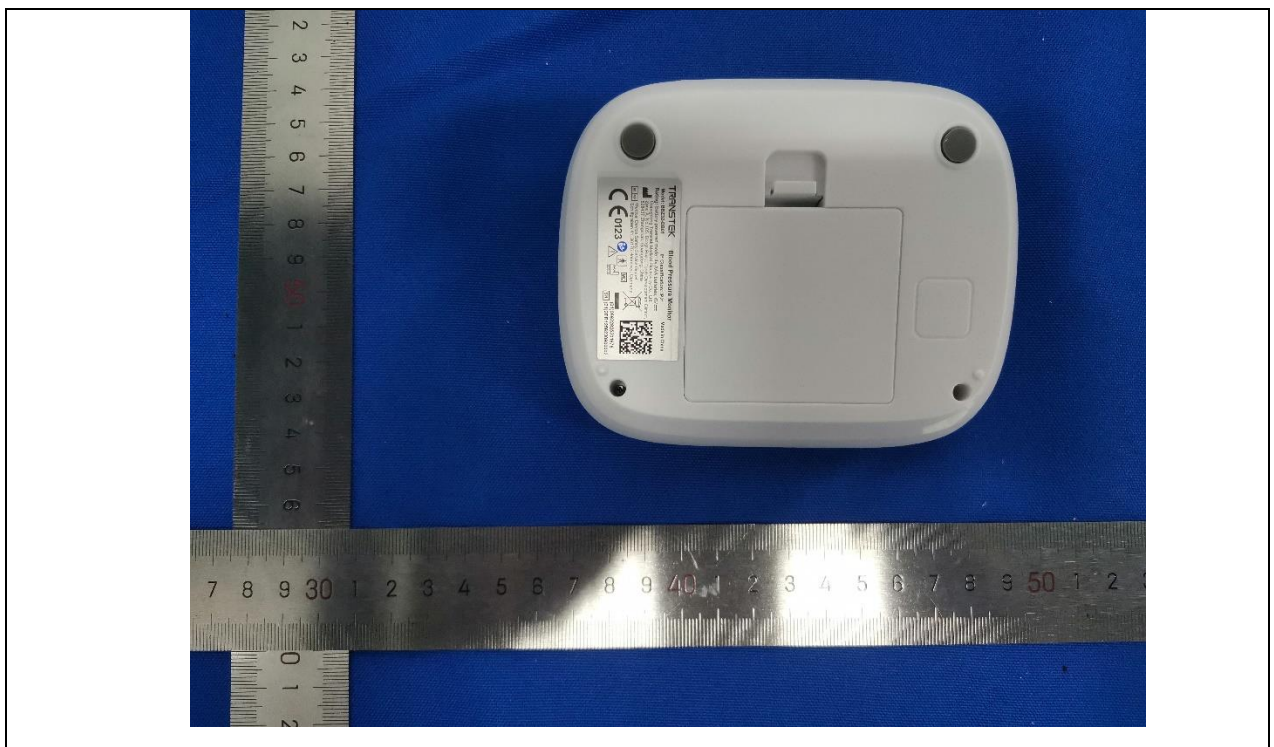




Details of: External view 1 (Model: BBZ32-BB01)



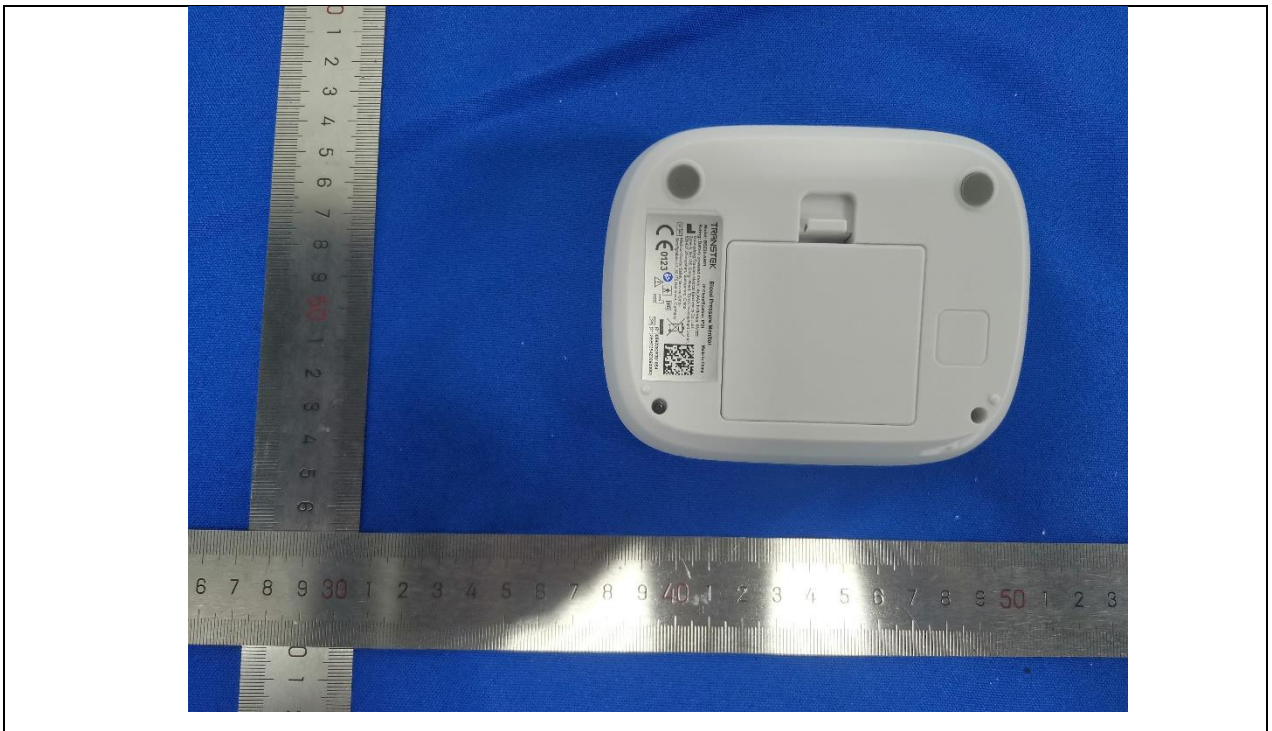
Details of: External view 2 (Model: BBZ32-BB01)



Details of: External view 1 (Model: BBZ32-AB01)

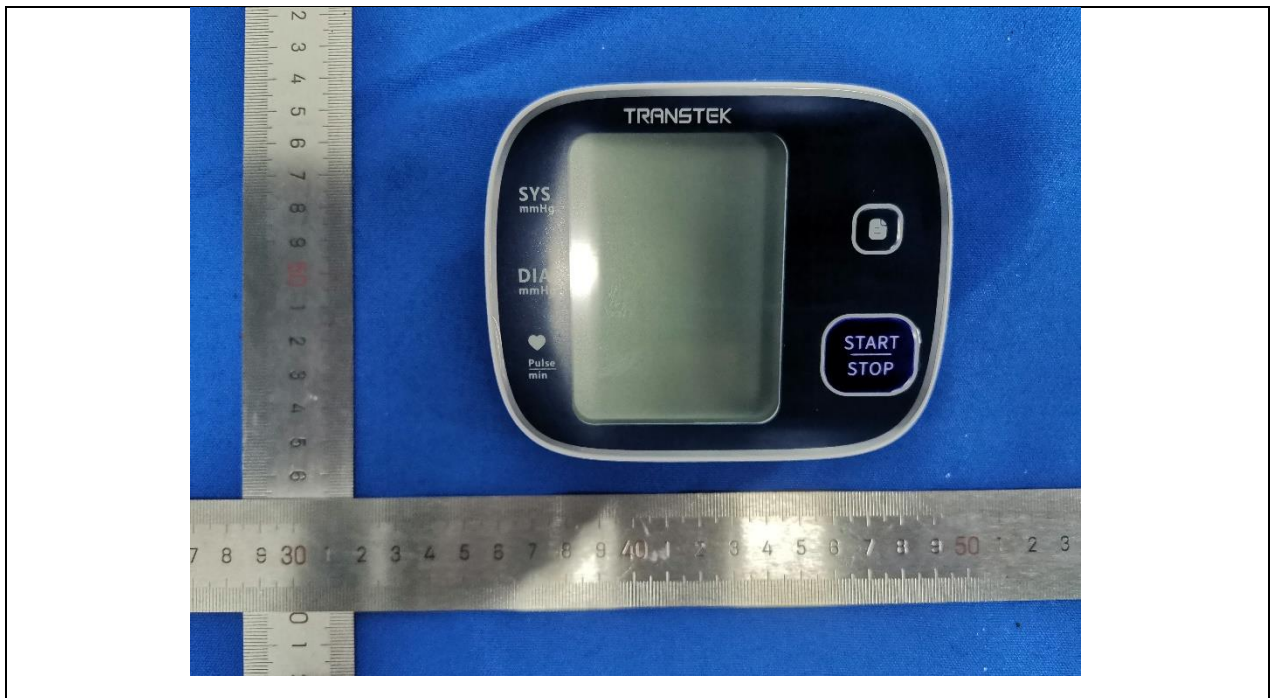


Details of: External view 2 (Model: BBZ32-AB01)





Details of: External view 1 (Model: BBZ32-DB01)



Details of: External view 2 (Model: BBZ32-DB01)

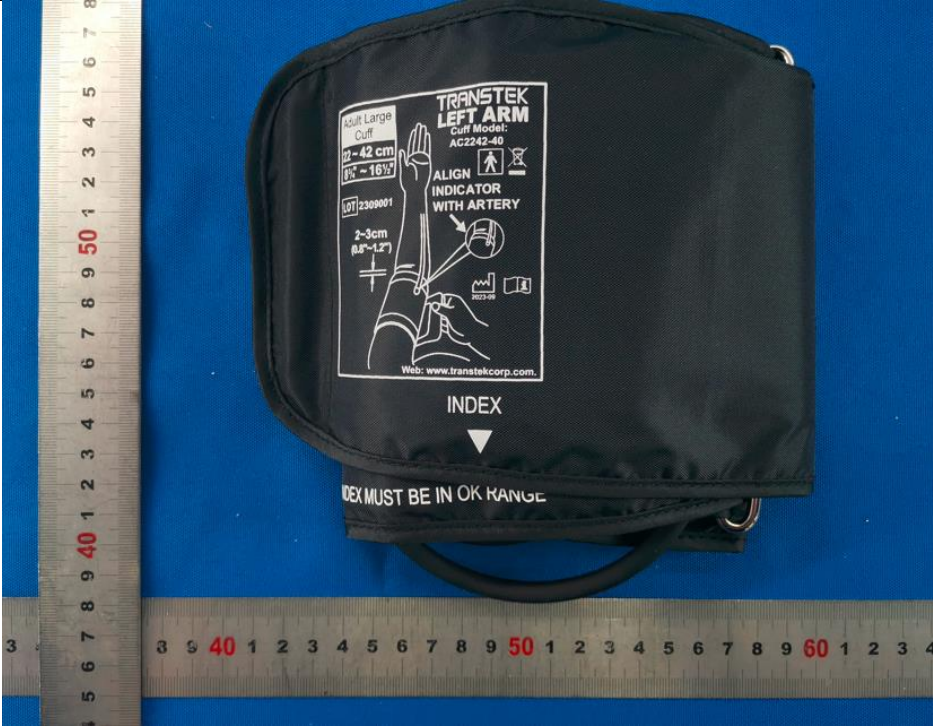


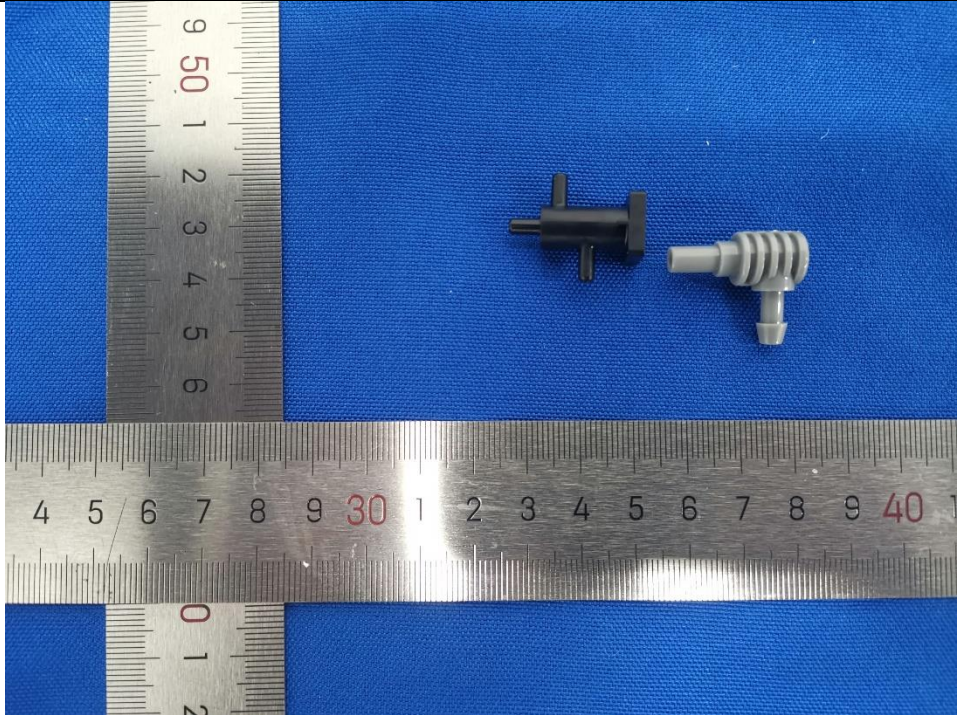
Details of:	Cuff (AC2232-10 22-32cm) (for all models)

Details of:	Cuff (AC2242-17 22-42cm) (for all models)



Details of:	Cuff (AC2232-16 22-32cm) (for all models)
	 A black Transtek Left Arm Cuff (AC2232-16) is shown against a blue background. A vertical ruler on the left indicates the cuff's length is approximately 50 cm. A horizontal ruler at the bottom indicates the cuff's width is approximately 40 cm. The cuff features a white label with the following text: "Adult Cuff", "22 ~ 32 cm", "8 1/4 ~ 12 1/2\"", "LOT 2309001", "2-3cm (0.8~1.2\")", "Main Arteries", "Web: www.transtekcorp.com", and "TRANSTEK LEFT ARM Cuff Model: AC2232-16". A white arrow on the cuff points upwards and is labeled "INDEX".

Details of:	Cuff (AC2242-40 22-42cm) (for all models)
	 A black Transtek Left Arm Cuff (AC2242-40) is shown against a blue background. A vertical ruler on the left indicates the cuff's length is approximately 50 cm. A horizontal ruler at the bottom indicates the cuff's width is approximately 40 cm. The cuff features a white label with the following text: "Adult Large Cuff", "22 ~ 42 cm", "8 1/2 ~ 16 1/2\"", "LOT 2309001", "2-3cm (0.8~1.2\")", "ALIGN INDICATOR WITH ARTERY", "Web: www.transtekcorp.com", and "TRANSTEK LEFT ARM Cuff Model: AC2242-40". A white arrow on the cuff points downwards and is labeled "INDEX". Below the arrow, the text "INDEX MUST BE IN OK RANGE" is visible.

Details of:	Small-bore connector
	 A photograph showing two small-bore connectors, one black and one white, placed on a blue fabric surface. A metal ruler is positioned horizontally below the connectors, and a vertical ruler is placed to the left of the black connector. The black connector is a T-shaped fitting with a central tube and two side ports. The white connector is a similar T-shaped fitting with a central tube and a single side port. The rulers provide a scale for the size of the components.