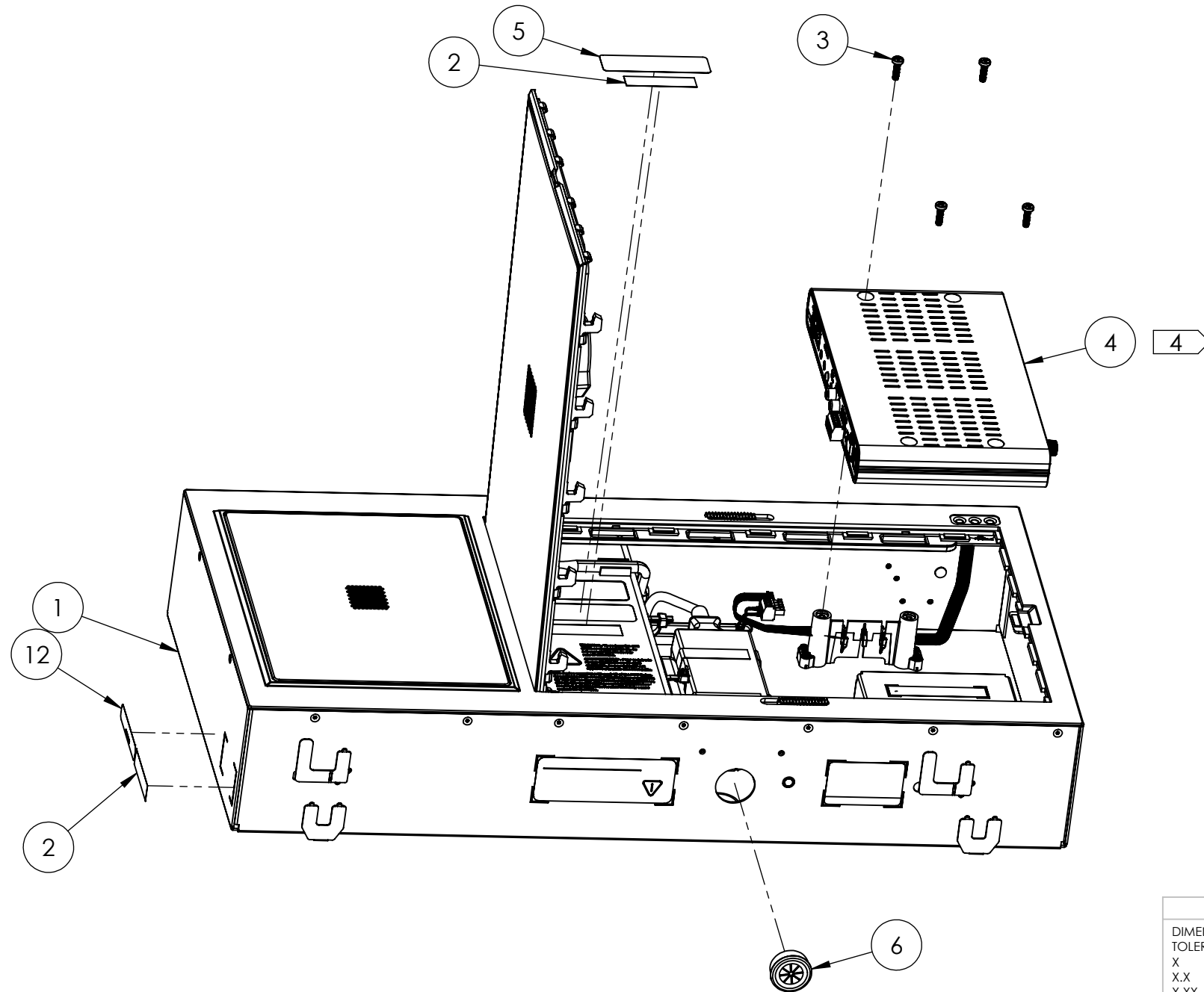


NOTES: (UNLESS OTHERWISE SPECIFIED)

1. ASSEMBLE AS SHOWN.
2. ALL COMPONENTS TO BE RoHS AND REACH COMPLIANT.
3. AFTER ASSEMBLY, MUST HAVE NO AUDIBLE RUB AND BUZZ DEFECTS.
4. ASSEMBLE ITEMS 8, 9, 10, AND 11 TO ITEM 4 C25 BEFORE ASSEMBLY INTO ITEM 1 TCE. SEE SHEET 2.
5. ITEMS 2 AND 12 LABELS SHOWN IN APPROXIMATE LOCATION. PRINT SHOWN FOR ORIENTATION REFERENCE ONLY. SEE SHEET 2.

REVISIONS

ZONE	REV	DESCRIPTION	DATE	APPROVED
-	A1	PRODUCT RELEASE	2024-10-25	ZEH
B3	A2	CORRECTED ITEM 3 PART DESCRIPTION	2024-11-06	ZEH
SH1 A2, B2	B1	ITEM 6 WAS PN 225-00013; ADDED ITEMS 7 THRU 11; ITEM 4 WAS 22-C25-X; ADDED SHEET 2	2025-02-19	ZEH
SH1 A4, B7 SH2 B7	C1	ADDED ITEM 12, FLAG NOTE 5; SH2 LABEL VIEW	2025-04-21	ZEH




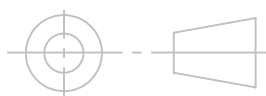
ITEM NO.	PART NUMBER	PART DESCRIPTION	QTY.
1	570-00003	34-TCE-X	1
2	334-00016	LABEL, 2"X0.5", GENERIC WHITE; SERIAL NUMBER	2
3	211-00024	SCREW, M4 X 14 PAN HD P2 ZNP	4
4	02-C25-X	ASSEMBLY, CASCADIA, C25	1
5	334-00015	LABEL, NAMEPLATE, TCC	1
6	395-00065	BUSHING, OPEN/CLOSED, 3/4" KNOCKOUT SIZE	2
7	225-00012	HOLE PLUG, SNAP-IN 1/2" TRADE	1
8	131-00005	TERM BLK 6POS 3.50MM SCRW PLG	1
9	334-00003	PROGRAM HEADER COVER	1
10	131-00038	CONN DUST CAP FOR RJ45 CONNECTOR	1
11	214-00002	RIVET SNAP 0.217" NYLON BLACK	1
12	334-00027	LABEL, FCC/ISED ID, TCC	1

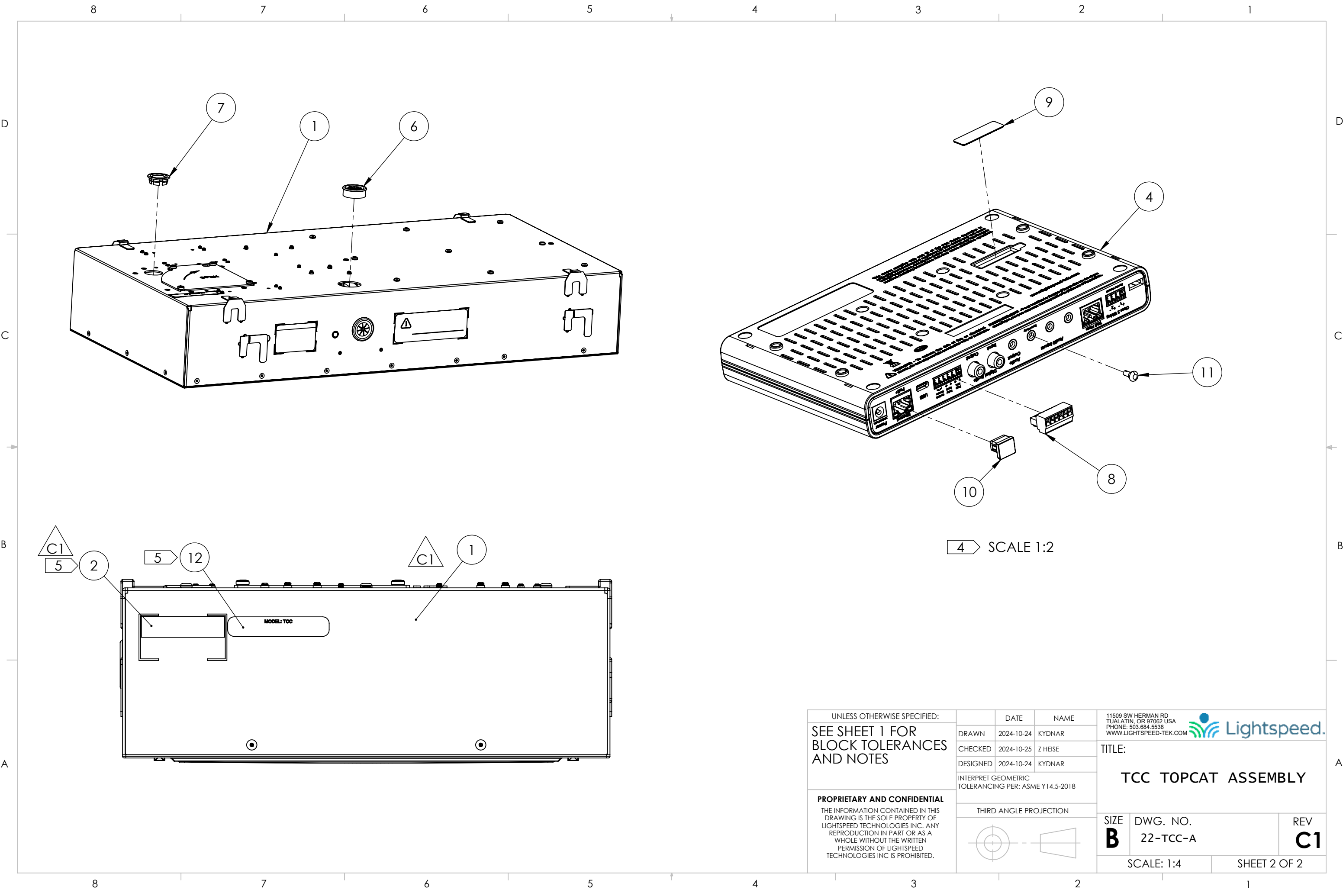
UNLESS OTHERWISE SPECIFIED:



DIMENSIONS ARE IN mm
TOLERANCES:
X ±0.5
X.X ±0.2
X.XX ±0.1
X.XXX ±0.05
ANGULAR ±1°

PROPRIETARY AND CONFIDENTIAL

THE INFORMATION CONTAINED IN THIS DRAWING IS THE SOLE PROPERTY OF LIGHTSPEED TECHNOLOGIES INC. ANY REPRODUCTION IN PART OR AS A WHOLE WITHOUT THE WRITTEN PERMISSION OF LIGHTSPEED TECHNOLOGIES INC IS PROHIBITED.

	DATE	NAME	11509 SW HERMAN RD TUALATIN, OR 97062 USA PHONE: 503.684.5538 WWW.LIGHTSPEED-TEK.COM		 Lightspeed.
DRAWN	2024-10-24	KYDNAR			
CHECKED	2024-10-25	Z HEISE	TITLE: TCC TOPCAT ASSEMBLY		
DESIGNED	2024-10-24	KYDNAR			
INTERPRET GEOMETRIC TOLERANCING PER: ASME Y14.5-2018					
THIRD ANGLE PROJECTION					
			SIZE B	DWG. NO. 22-TCC-A	REV C1
			SCALE: 1:4		SHEET 1 OF 2



UNLESS OTHERWISE SPECIFIED:		DATE		NAME		11509 SW HERMAN RD TUALATIN, OR 97062 USA PHONE: 503.684.5538 WWW.LIGHTSPEED-TEK.COM		 Lightspeed.			
SEE SHEET 1 FOR BLOCK TOLERANCES AND NOTES		DRAWN	2024-10-24	KYDNAR		TITLE: TCC TOPCAT ASSEMBLY					
		CHECKED	2024-10-25	Z HEISE							
		DESIGNED	2024-10-24	KYDNAR							
		INTERPRET GEOMETRIC TOLERANCING PER: ASME Y14.5-2018									
PROPRIETARY AND CONFIDENTIAL THE INFORMATION CONTAINED IN THIS DRAWING IS THE SOLE PROPERTY OF LIGHTSPEED TECHNOLOGIES INC. ANY REPRODUCTION IN PART OR AS A WHOLE WITHOUT THE WRITTEN PERMISSION OF LIGHTSPEED TECHNOLOGIES INC IS PROHIBITED.		THIRD ANGLE PROJECTION				SIZE B		DWG. NO. 22-TCC-A		REV C1	
						SCALE: 1:4		SHEET 2 OF 2			