

NORMARC 7031

INSTRUMENT LANDING SYSTEM

TRANSMITTER FIGURES

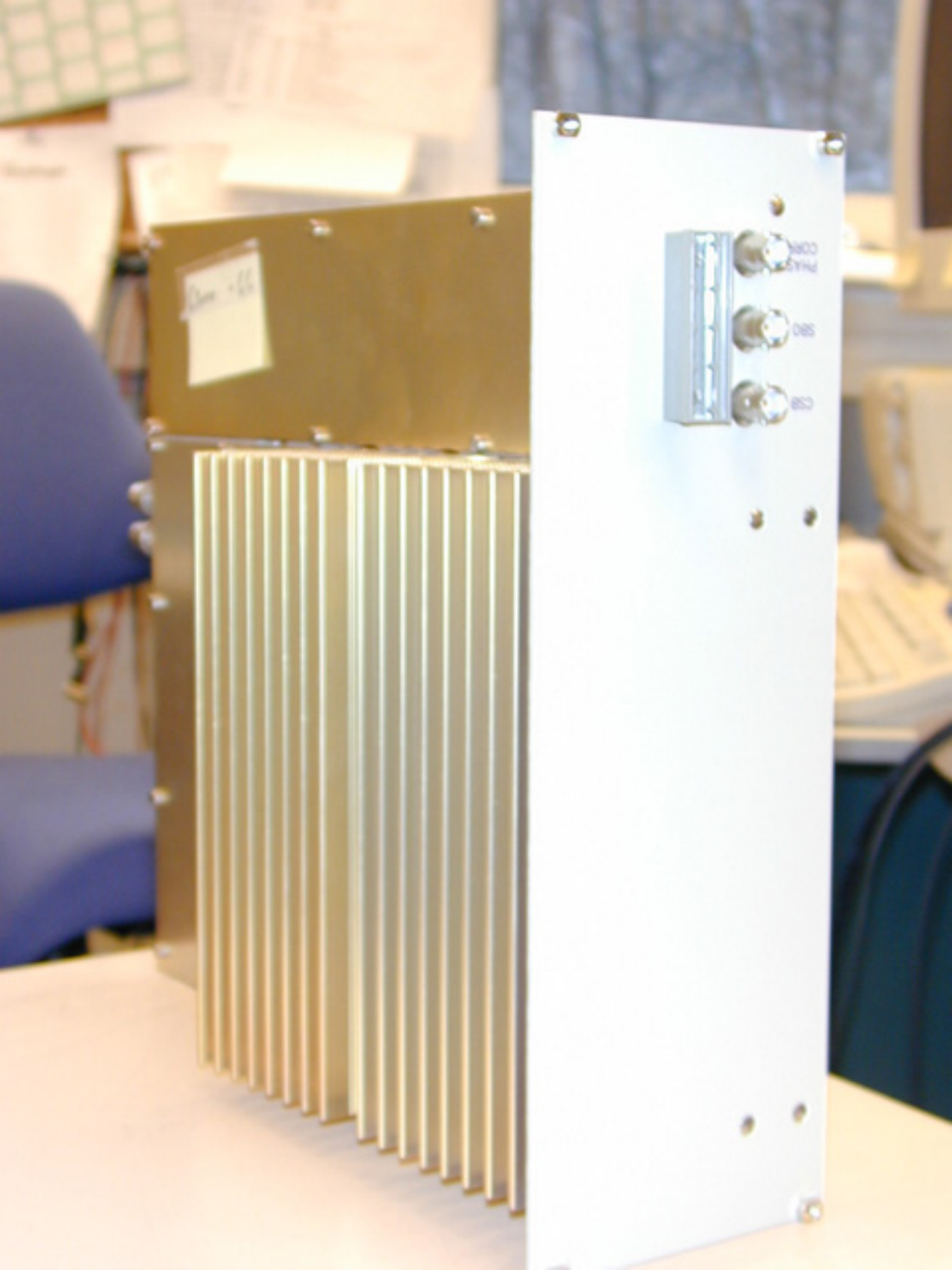





TABLE OF CONTENTS

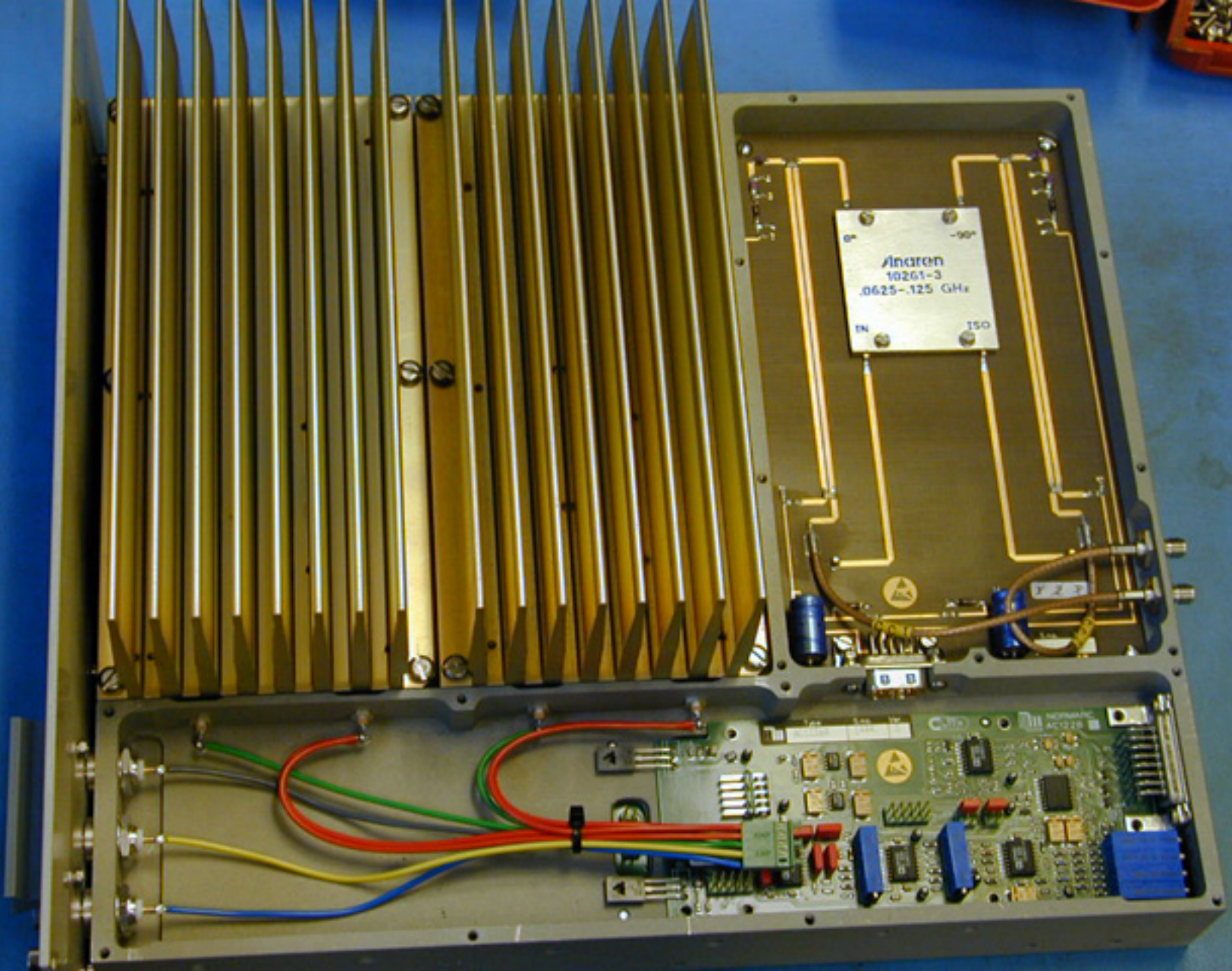
| | | |
|-----|---------------------------------------|----|
| 1 | LF1223A LOW FREQUENCY GENERATOR..... | 7 |
| 1.1 | Schematic Diagrams | 7 |
| 1.2 | Photos | 8 |
| 2 | OS1221B RF OSCILLATOR..... | 9 |
| 2.1 | Circuit Diagrams..... | 9 |
| 2.2 | Component Location | 10 |
| 2.3 | Photos | 11 |
| 3 | GPA1231A POWER AMPLIFIER | 13 |
| 3.1 | Photos | 13 |
| 4 | PA1234A LOW FREQUENCY GENERATOR | 15 |
| 4.1 | Schematic Diagrams | 15 |
| 4.2 | Photos | 16 |
| 5 | AC1226A AMPLITUDE CONTROL | 17 |
| 5.1 | Schematic Diagrams | 17 |
| 5.2 | Photos | 18 |
| 6 | PC1225A PHASE CONTROL..... | 19 |
| 6.1 | Schematic Diagrams | 19 |
| 6.2 | Photos | 20 |
| 7 | FD1236A FEEDBACK DETECTOR..... | 21 |
| 7.1 | Schematic Diagrams | 21 |
| 7.2 | Photos | 22 |
| 8 | CD 1238A COMBINER DETECTOR..... | 23 |
| 8.1 | Schematic Diagrams | 23 |
| 8.2 | Photos | 24 |

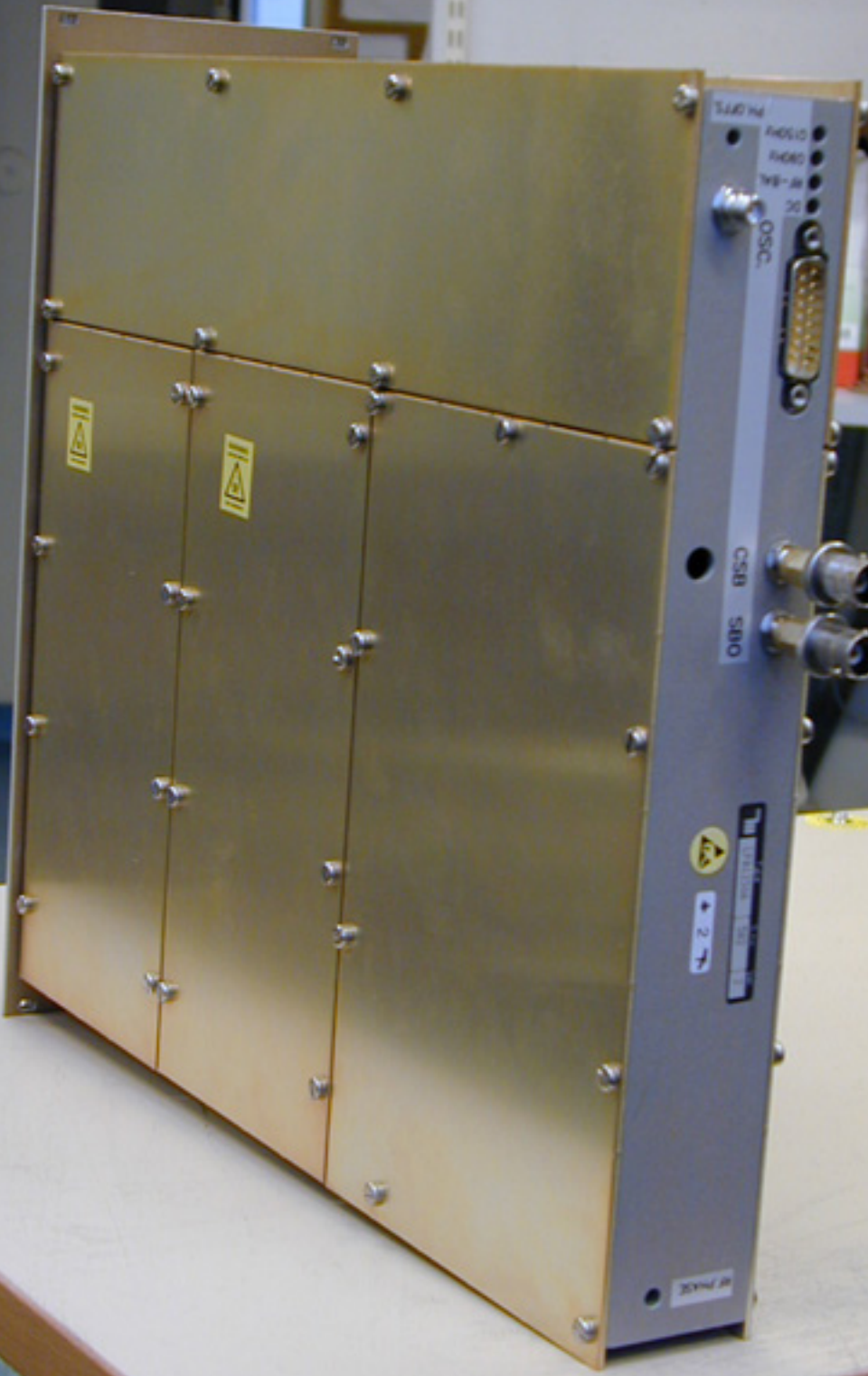
3 GPA1231A POWER AMPLIFIER ASSEMBLY**3.1 *Photos (LPA1230A/GPA1231A)***

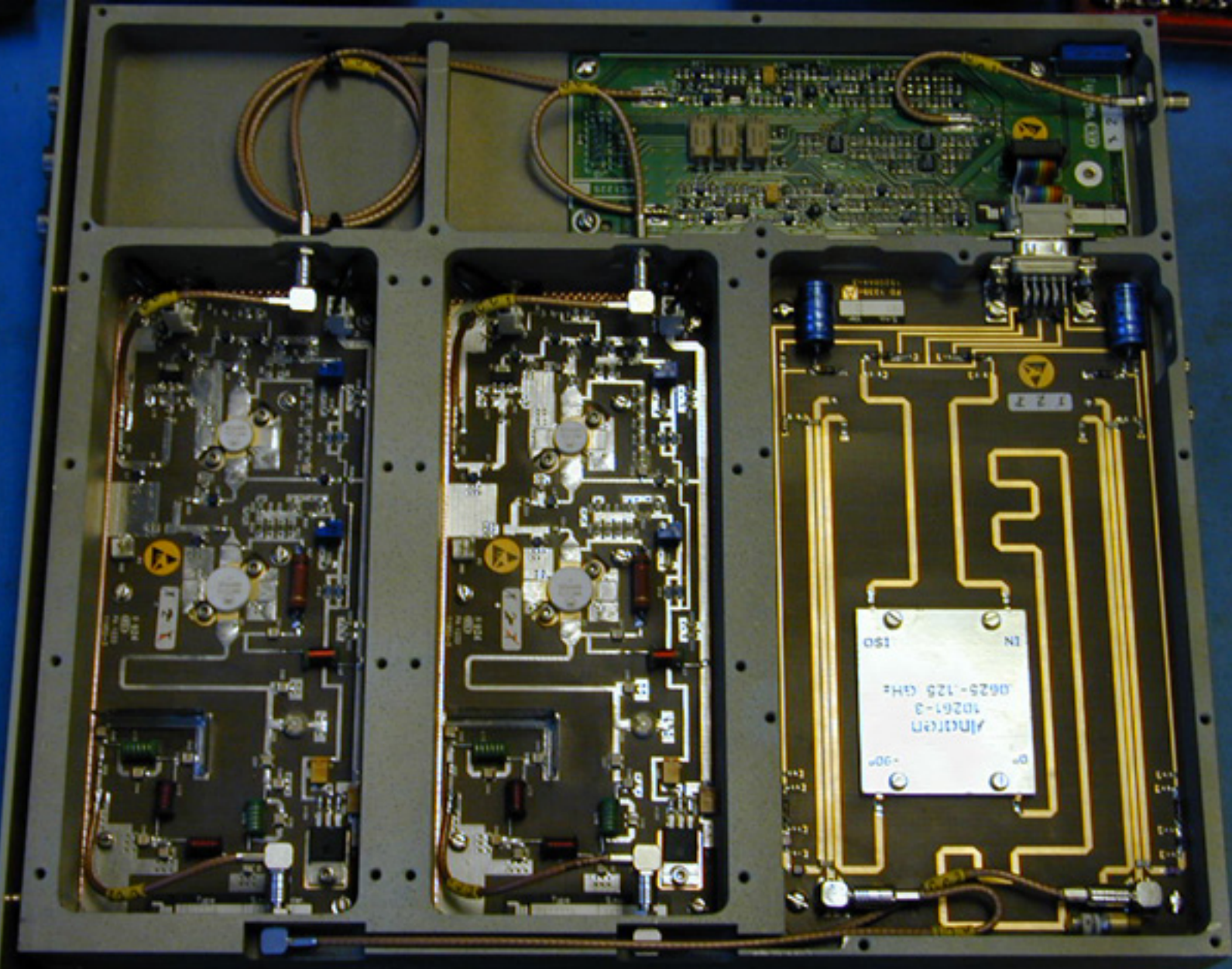


6100 - 66









4 PA1234A Power Amplifier

4.1 *Schematic Diagrams*

4.2 *Parts List*

Product: 18636 *Rev 2* PA 1234A POWER AMPLIFIER

Issue: 4 Change Order: 3479

Date:

| Tot.Quant. | Pos. | Part no. | Component Manu. Description | Drwg.no. | Rev. | Value/Dim. Ratings | Tol. Function | Quant./Pos. |
|------------|------|-----------|----------------------------------|----------|------|-----------------------|------------------|-------------|
| 1 | PCS | 18637 | PA 1234A POWER AMPLIFIER PL | 18637/9 | 4 | | | 1 PCS |
| 1 | PCS | 18638 | PA 1234A POWER AMPLIFIER MPL | - | 4 | | | 1 PCS |
| 1 | PCS | 18639 | PA 1234A POWER AMPLIFIER CPL | - | 1 | | | 1 PCS |
| 1 | PCS | C08 19832 | CAP.SMD XXXX 0805C270J50 | - | | 27P 50V | 5% | 1 PCS |
| 1 | PCS | C09 19836 | CAP.SMD XXXX 0805C560J50 | - | | 56P 50V | 5% | 1 PCS |
| 1 | PCS | C18 10208 | CAP.CERAMIC ATC 700A151JP150X | - | | 150P 150V | 0.05 | 1 PCS |
| 1 | PCS | Q02 11296 | TRANSISTOR MOT MRF 134 | - | | | | 1 PCS |
| 1 | PCS | Q03 11297 | TRANSISTOR MOT MRF 137 | - | | | | 1 PCS |
| 1 | PCS | U01 11510 | IC MOT MCT7812CT / MC7812 | - | | | | 1 PCS |

Product: 18637 Rev.4

PA 1234A POWER AMPLIFIER PL

Issue: 10

Change Order: 3489

Appr.: HSA

A.S.

Date: 090399

| Tot.Quant. | Pos. | Part no. | Component Manu. Description | Drwg.no. | Rev. | Value/Dim. Ratings | Tol. Function | Quant./Pos. |
|------------|------|----------|--------------------------------|----------|------|-----------------------|------------------|-------------|
| 1 | PCS | 11953 | PCB PA1234 | 11953/2 | | | | 1 PCS |
| 1 | PCS | 13231 | LABEL SER.NO. | 13344A4 | 2 | | PA1234A | 1 PCS |
| 1 | PCS | 13298 | LABEL ESD TYPE 52404 | - | 1 | | | 1 PCS |
| 1 | PCS | 20325 | LABEL PROGRESS 2 | 16037A4 | 3 | 1-2-T | | 1 PCS |
| 1 | PCS | 21072 | PA 1234A GP POWER AMPL. ESPL | - | 2 | | | 1 PCS |
| 2 | PCS | C15 | CAP.CERAMIC | - | | 100p | 0.05 | 1 PCS |
| | | | ATC 100B101JP500X | - | | 500V | | |
| 1 | PCS | C16 | CAP.CERAMIC | - | | 30p | 0.02 | 1 PCS |
| | | | ATC 100A300GP150DR | - | | 150V | | |
| 1 | PCS | C17 | CAP.CERAMIC | - | | 33p | 0.05 | 1 PCS |
| | | | ATC 100A330JP150X | - | | 150V | | |
| 2 | PCS | C22 | CAP.TANTALUM | - | | 1.5u | 20% | 1 PCS |
| | | | KYOC TAJD155M050R | - | | 50V | | |
| | | | CAP.TANTALUM | - | | 1.5u | 20% | 1 PCS |
| | | | KYOC TAJD155M050R | - | | 50V | | |
| | | | CAP.CERAMIC | - | | 100p | 0.05 | 1 PCS |
| | | | ATC 100B101JP500X | - | | 500V | | |
| 1 | PCS | C28 | CAP.CERAMIC | - | | 12p | 0.05 | 1 PCS |
| | | | ATC 100B120JP500DR | - | | 500V | | |
| 1 | PCS | C29 | CAP.TRIMMER | - | | 3-20p | | 1 PCS |
| | | | TILEC 9612SL | - | | | | |
| 1 | PCS | C30 | CAP.CERAMIC | - | | 22p | 0.05 | 1 PCS |
| | | | ATC 100B220JP500DR | - | | 500V | | |
| 2 | PCS | C31 | CAP.CERAMIC | - | | 9.1p | 0.05 | 1 PCS |
| | | | ATC 100B9R1JP500DR | - | | 500V | | |

Product: 18637

PA 1234A POWER AMPLIFIER PL

Issue: 10

Change Order: 3489

Appr.: HSA

Date: 090399

| Tot.Quant. | Pos. | Part no. | Component Manu. Description | Drwg.no. | Rev. | Value/Dim. Ratings | Tol. Function | Quant./Pos. |
|------------|------|----------|--------------------------------|----------|------|-----------------------|------------------|-------------|
| 2 PCS | C32 | 10101 | CAP.CERAMIC | - | - | 15p | 0.05 | 1 PCS |
| | | | ATC 100B150JP500DR | | | 500V | | |
| | C33 | 10101 | CAP.CERAMIC | - | - | 15p | 0.05 | 1 PCS |
| | | | ATC 100B150JP500DR | | | 500V | | |
| | C34 | 10080 | CAP.CERAMIC | - | - | 9.1p | 0.05 | 1 PCS |
| | | | ATC 100B9R1JP500DR | | | 500V | | |
| 1 PCS | L01 | 13538 | INDUCTOR | - | - | 18n | 20% | 1 PCS |
| 2 PCS | L02 | 13523 | COIL 1008CS-180XMBC | - | - | 10n | 20% | 1 PCS |
| | | | INDUCTOR | | | | | |
| 1 PCS | L03 | 13482 | COIL 1008CS-100XMBC | - | - | 1u | | 1 PCS |
| | | | INDUCTOR | | | | | |
| | L04 | 13523 | COIL 1008CS 102XKBC | - | - | 10n | 20% | 1 PCS |
| | | | INDUCTOR | | | | | |
| 1 PCS | L05 | 13528 | COIL 1008CS-100XMBC | - | - | 270n | 10% | 1 PCS |
| | | | INDUCTOR | | | | | |
| 1 PCS | L06 | 13524 | COIL 1008CS-271XKBC | - | - | 4.7n | 20% | 1 PCS |
| | | | INDUCTOR | | | | | |
| 1 PCS | L07 | 13532 | COIL 1008CT-040XMBC | - | - | 345n | 5% | 1 PCS |
| | | | INDUCTOR | | | | | |
| 2 PCS | L08 | 13536 | COIL 132-15 345nH +-5% | - | - | 44n | 5% | 1 PCS |
| | | | INDUCTOR | | | | | |
| 1 PCS | L09 | 13535 | COIL 132-03 44nH +-5% | - | - | 53.5n | 5% | 1 PCS |
| | | | INDUCTOR | | | | | |
| | L10 | 13536 | COIL 132-04 53.5nH +-5% | - | - | 44n | 5% | 1 PCS |
| | | | INDUCTOR | | | | | |
| 1 PCS | L11 | 13531 | COIL 132-03 44nH +-5% | - | - | 27n | 20% | 1 PCS |
| | | | INDUCTOR | | | | | |
| 3 PCS | P01 | 12303 | COIL 1008CS-270XMBC | - | - | | | 1 PCS |
| | | | CONN. | | | | | |
| | | | MOLX 22-27-2021 | | | | | |
| | P02 | 12303 | CONN. | - | - | | | 1 PCS |
| | | | MOLX 22-27-2021 | | | | | |

Product: 18637 PA 1234A POWER AMPLIFIER PL Issue: 10 Change Order: 3489 Appr.: HSA Date: 090399

| Tot.Quant. | Pos. | Part no. | Component Manu. Description | Drwg.no. | Rev. | Value/Dim. Ratings | Tol. Function | Quant./Pos. |
|------------|------|----------|--------------------------------|----------|------|-----------------------|------------------|-------------|
| | P03 | 12303 | CONN. | - | | | | 1 PCS |
| | | | MOLX 22-27-2021 | | | | | |
| 1 PCS | Q01 | 11302 | TRANSISTOR | - | | SOT-223 | | 1 PCS |
| | | | PH BLT80,115 (TAPE) | | | | | |
| 2 PCS | R05 | 11134 | POTENTIOMETER | - | | 10k | 10% | 1 PCS |
| | | | BOUR 3266W-1-103 | | | | 0.25W | |
| 1 PCS | R22 | 10622 | RES.METALFILM | - | | 150 | 5% | 1 PCS |
| | | | PH 2322 195 13151 | | | 750V | | |
| | R25 | 11134 | POTENTIOMETER | - | | 10k | 10% | 1 PCS |
| | | | BOUR 3266W-1-103 | | | | 0.25W | |

Product: 18639

PA 1234A POWER AMPLIFIER KAB

Issue: 1

Change Order:

Appr.: *A.S.* Date: 26.11.97

| Tot.Quant. | Pos. | Part no. | Component Manu. Description | Drwg.no. | Rev. | Value/Dim. Ratings | Tol. Function | Quant./Pos. |
|------------|------|----------|--------------------------------|----------|------|-----------------------|------------------|-------------|
|------------|------|----------|--------------------------------|----------|------|-----------------------|------------------|-------------|

| | | | | | | | | |
|-------|--|-------|--------------------------------------|---|--|--|--|-------------------|
| .18 M | | 19676 | COAX CABLE RG 316/U | - | | | | 180 MM |
| 2 PCS | | 12128 | CONN.COAX SUHN 16 SMB-50-2-10/133 | - | | | | 2 PCS SMB-MALE |

Product: 21072

PA 1234A GP POWER AMPL. ESPL

Issue: 7

Change Order: 3386

Appr.: *A.S.*

Date: 10.11.98

| Tot.Quant. | Pos. | Part no. | Component Manu. Description | Drwg.no. | Rev. | Value/Dim. Ratings | Tol. Function | Quant./Pos. |
|------------|------|----------|--------------------------------|----------|------|-----------------------|------------------|-------------|
| 1 PCS | C01 | 19824 | CAP.SMD XXXX 0805C5P6J50 | - | - | 5.6P 50V | 5% | 1 PCS |
| 9 PCS | C02 | 19852 | CAP.SMD XXXX 0805C102J50 | - | - | 1N 50V | 5% | 1 PCS |
| | C04 | 19852 | CAP.SMD XXXX 0805C102J50 | - | - | 1N 50V | 5% | 1 PCS |
| 7 PCS | C05 | 19840 | CAP.SMD XXXX 0805C101J50 | - | - | 100P 50V | 5% | 1 PCS |
| | C06 | 19840 | CAP.SMD XXXX 0805C101J50 | - | - | 100P 50V | 5% | 1 PCS |
| | C07 | 19852 | CAP.SMD XXXX 0805C101J50 | - | - | 1N 50V | 5% | 1 PCS |
| | C10 | 19840 | CAP.SMD XXXX 0805C102J50 | - | - | 100P 50V | 5% | 1 PCS |
| | C11 | 19852 | CAP.SMD XXXX 0805C101J50 | - | - | 1N 50V | 5% | 1 PCS |
| | C12 | 19852 | CAP.SMD XXXX 0805C102J50 | - | - | 1N 50V | 5% | 1 PCS |
| | C13 | 19852 | CAP.SMD XXXX 0805C102J50 | - | - | 1N 50V | 5% | 1 PCS |
| | C14 | 19840 | CAP.SMD XXXX 0805C101J50 | - | - | 100P 50V | 5% | 1 PCS |
| | C19 | 19840 | CAP.SMD XXXX 0805C101J50 | - | - | 100P 50V | 5% | 1 PCS |
| | C20 | 19840 | CAP.SMD XXXX 0805C101J50 | - | - | 100P 50V | 5% | 1 PCS |
| | C21 | 19852 | CAP.SMD XXXX 0805C101J50 | - | - | 1N 50V | 5% | 1 PCS |
| | C24 | 19852 | CAP.SMD XXXX 0805C102J50 | - | - | 1N 50V | 5% | 1 PCS |
| | C25 | 19840 | CAP.SMD XXXX 0805C102J50 | - | - | 100P 50V | 5% | 1 PCS |

Product: 21072

PA 1234A GP POWER AMPL. ESPL

Issue: 7

Change Order: 3386

Appr.: *AS*

Date: 0.11.98

| Tot.Quant. | Pos. | Part no. | Component Manu. Description | Drwg.no. | Rev. | Value/Dim. Ratings | Tol. | Function | Quant./Pos. |
|------------|---------|----------|----------------------------------|----------|------|-----------------------|------|----------|-------------|
| | C26 | 19852 | XXXX 0805C101J50 CAP.SMD | - | - | 50V 1N | 5% | | 1 PCS |
| 1 | PCS R01 | 10909 | XXXX 0805C102J50 SMD RESISTOR | - | - | 50V 10 | 1% | | 1 PCS |
| 1 | PCS R02 | 10926 | XXXX 1206F100 SMD RESISTOR | - | - | 0.25W 51 | 1% | | 1 PCS |
| 1 | PCS R03 | 10940 | XXXX 1206F510 SMD RESISTOR | - | - | 0.25W 300 | 1% | | 1 PCS |
| 1 | PCS R04 | 10903 | XXXX 1206F301 SMD RESISTOR | - | - | 0.25W 5.6 | 1% | | 1 PCS |
| 2 | PCS R06 | 10977 | XXXX 1206F5R6 SMD RESISTOR | - | - | 0.25W 10K | 1% | | 1 PCS |
| 2 | PCS R07 | 10943 | XXXX 1206F103 SMD RESISTOR | - | - | 0.25W 390 | 1% | | 1 PCS |
| | R08 | 10943 | XXXX 1206F391 SMD RESISTOR | - | - | 0.25W 390 | 1% | | 1 PCS |
| 4 | PCS R09 | 10967 | XXXX 1206F391 SMD RESISTOR | - | - | 0.25W 3.9K | 1% | | 1 PCS |
| | R10 | 10967 | XXXX 1206F392 SMD RESISTOR | - | - | 0.25W 3.9K | 1% | | 1 PCS |
| 6 | PCS R11 | 18943 | XXXX 1206F392 SMD RESISTOR | - | - | 0.25W 100 | 1% | | 1 PCS |
| | R12 | 18943 | XXXX 1206F101 SMD RESISTOR | - | - | 0.25W 100 | 1% | | 1 PCS |
| | R13 | 18943 | XXXX 1206F101 SMD RESISTOR | - | - | 0.25W 100 | 1% | | 1 PCS |
| | R14 | 18943 | XXXX 1206F101 SMD RESISTOR | - | - | 0.25W 100 | 1% | | 1 PCS |
| | R15 | 18943 | XXXX 1206F101 SMD RESISTOR | - | - | 0.25W 100 | 1% | | 1 PCS |
| 1 | PCS R16 | 20100 | XXXX 1206F101 JUMPER | - | - | 0.25W 0 | 1% | | 1 PCS |

Product: 21072

PA 1234A GP POWER AMPL. ESPL

Issue: 7

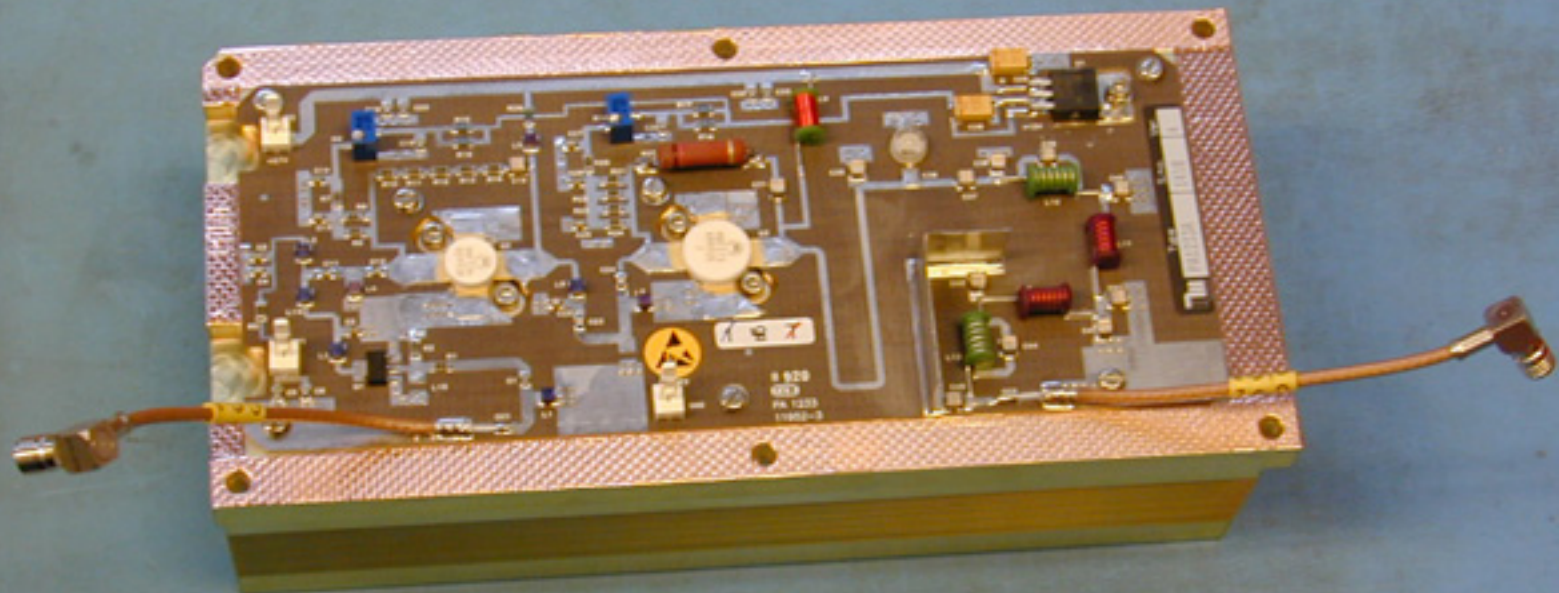
Change Order: 3386

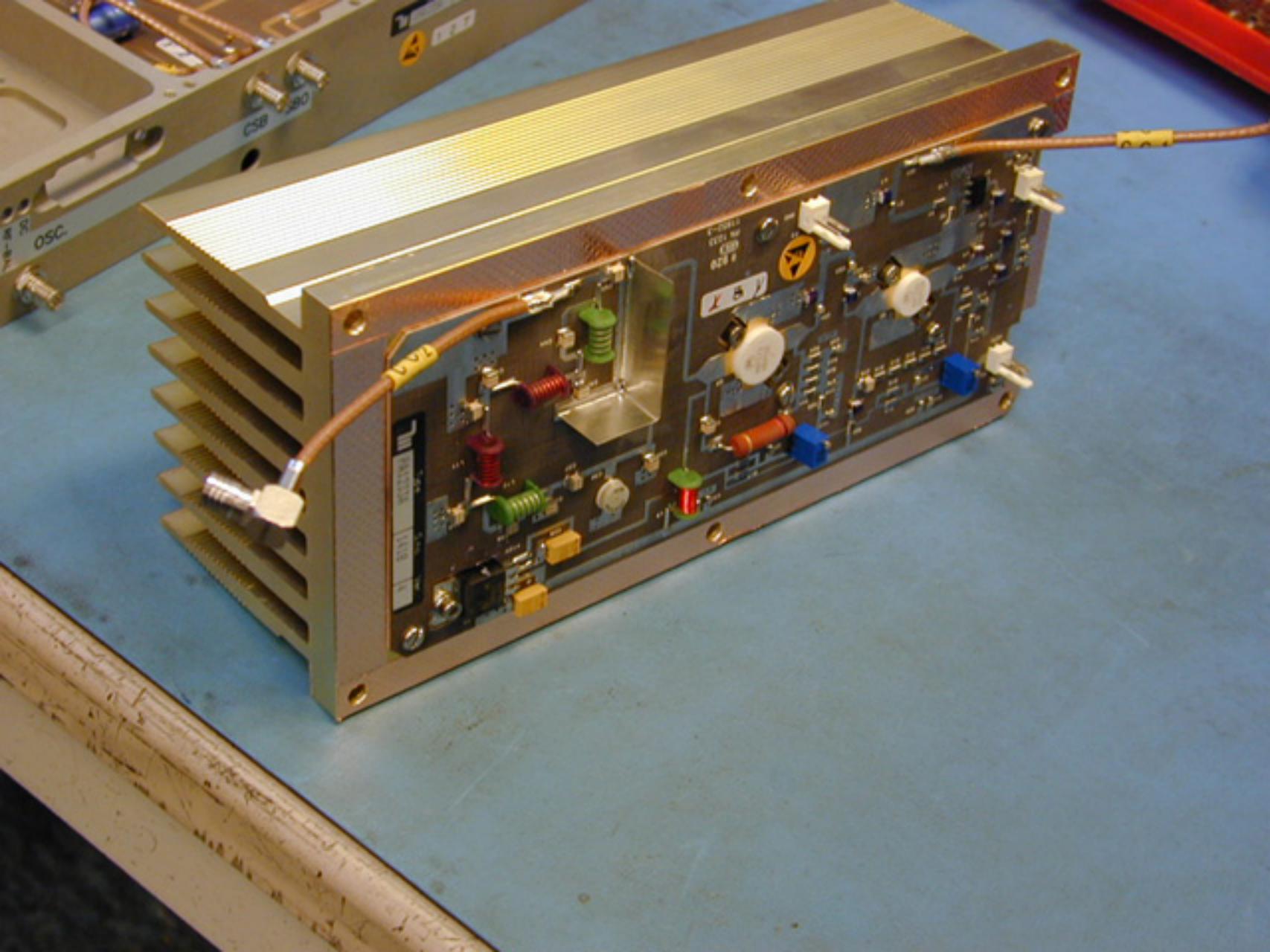
Appr.: *A.S.*

Date: 10.11.98

| Tot. Quant. | Pos. | Part no. | Component Manu. Description | Drwg.no. | Rev. | Value/Dim. Ratings | Tol. Function | Quant./Pos. |
|-------------|------|----------|--------------------------------|----------|------|-----------------------|------------------|-------------|
| | R17 | 10977 | XXXX 1206F000 SMD RESISTOR | - | | 10K | 1% | 1 PCS |
| 4 PCS | R18 | 10991 | XXXX 1206F103 SMD RESISTOR | - | | 39K | 1% | 1 PCS |
| | R19 | 10991 | XXXX 1206F393 SMD RESISTOR | - | | 39K | 1% | 1 PCS |
| | R20 | 10991 | XXXX 1206F393 SMD RESISTOR | - | | 39K | 1% | 1 PCS |
| | R21 | 10991 | XXXX 1206F393 SMD RESISTOR | - | | 39K | 1% | 1 PCS |
| | R23 | 10967 | XXXX 1206F392 SMD RESISTOR | - | | 3.9K | 1% | 1 PCS |
| | R24 | 10967 | XXXX 1206F392 SMD RESISTOR | - | | 3.9K | 1% | 1 PCS |
| | R26 | 18943 | XXXX 1206F101 SMD RESISTOR | - | | 100 | 1% | 1 PCS |
| 1 PCS | R27 | 10951 | XXXX 1206F821 SMD RESISTOR | - | | 820 | 1% | 1 PCS |
| 1 PCS | R28 | 10937 | XXXX 1206F201 SMD RESISTOR | - | | 200 | 1% | 1 PCS |

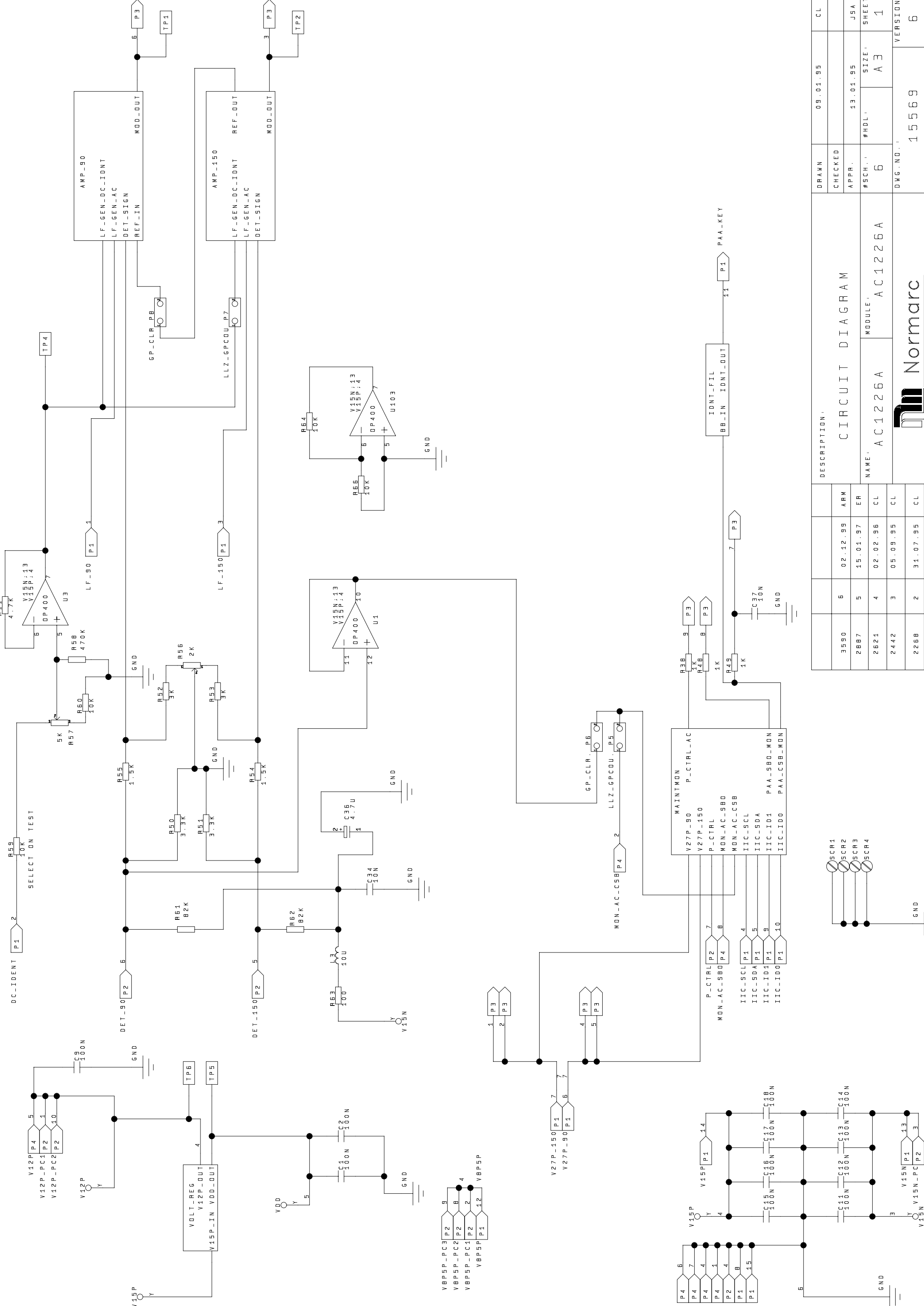
4.3 *Photos*



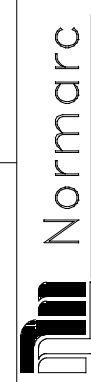


5 AC1226A AMPLITUDE CONTROL

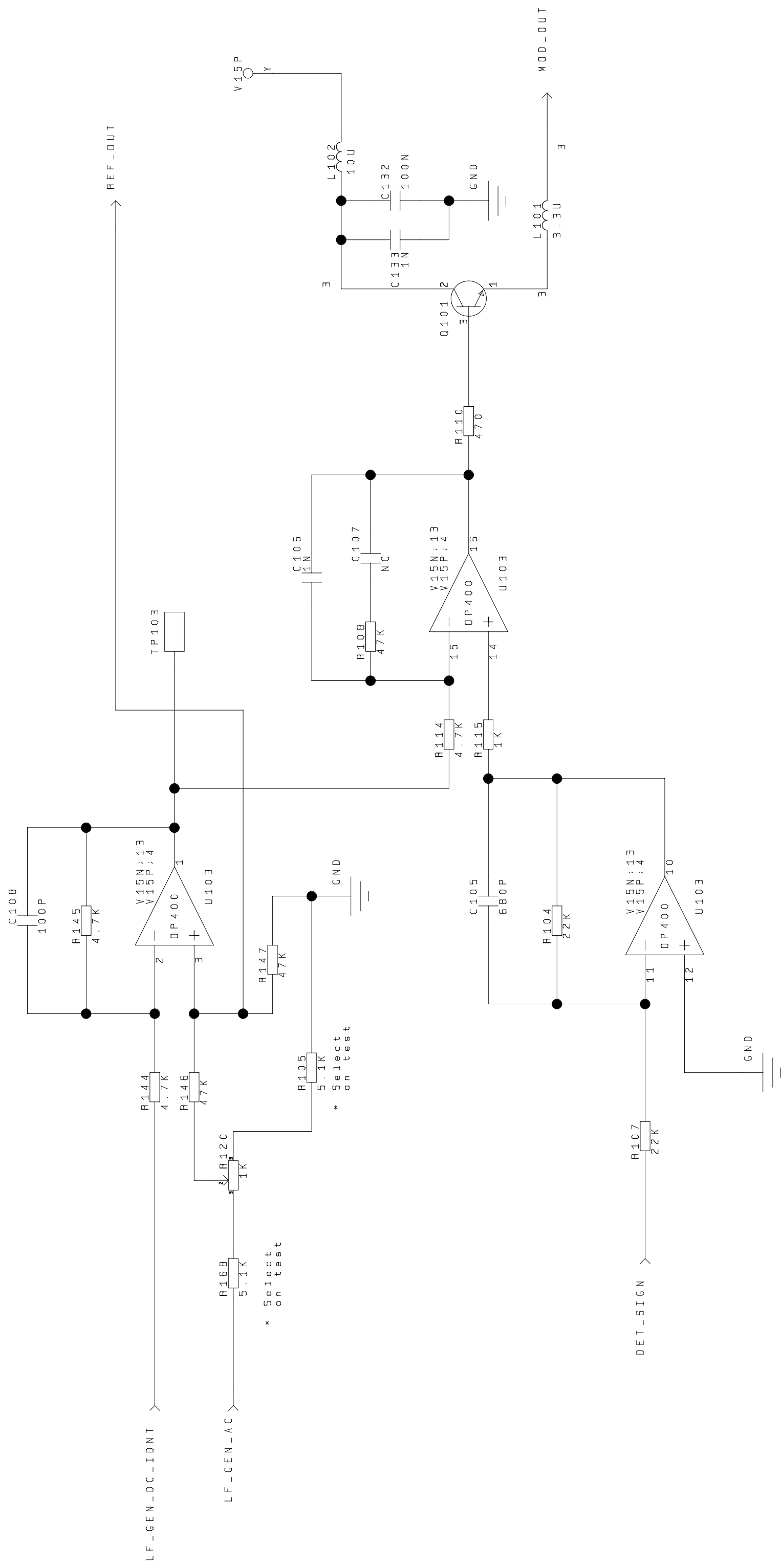
5.1 *Schematic Diagrams*



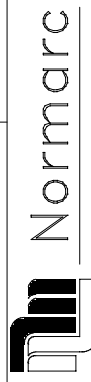
| DESCRIPTION | | DRAWN | | CHECKED | |
|-----------------|-------|---------------|-------|---------|---|
| 3550 | 6 | 02.12.99 | ARM | | |
| 2887 | 5 | 15.01.97 | ER | | |
| 2621 | 4 | 02.02.96 | CL | | |
| 2442 | 3 | 05.09.95 | CL | | |
| 2268 | 2 | 31.07.95 | CL | | |
| REF. NO. | ISSUE | DATE | SIGN | PROJECT | |
| CIRCUIT DIAGRAM | | | 15569 | | |
| NAME | | MODULE | SIZE | VERSION | |
| A C 1 2 2 6 A | | A C 1 2 2 6 A | A 3 | 6 | 1 |
| DMG. NO. | | 15569 | | 6 | |
| DRAWN | | 09.01.95 | | CL | |
| CHECKED | | | | JSA | |
| APPR. | | 13.01.95 | | SHEET | |
| #SCH. | | 6 | | 1 | |



Copyright and all modification rights reserved NAVIA/AVIATION AS, NORWAY

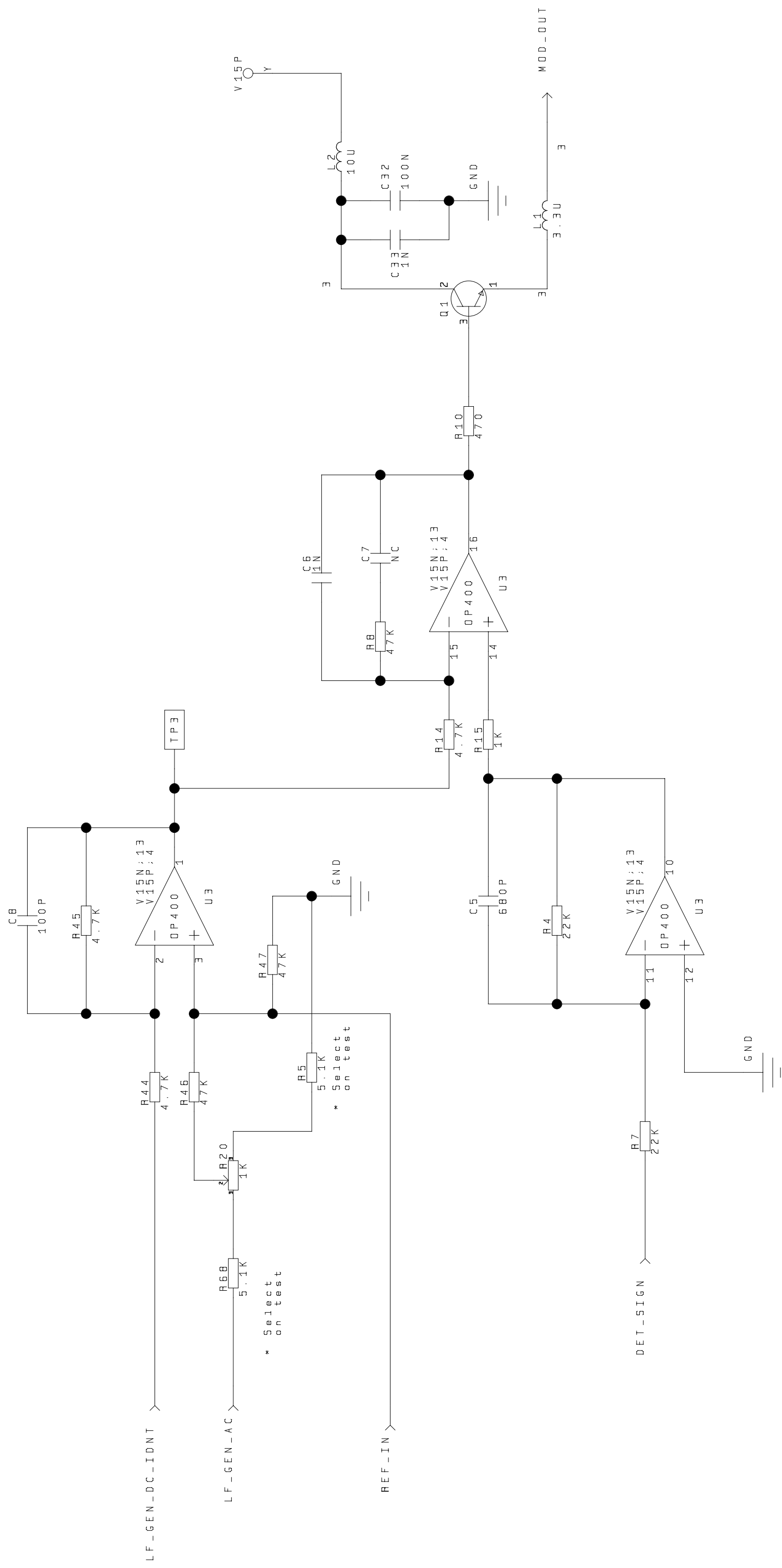


| REF. NO. | ISSUE | DATE | SIGN | DESCRIPTION | CL |
|----------|-------|----------|------|-----------------|-------------------------|
| 3590 | 6 | 02.12.99 | ARM | CIRCUIT DIAGRAM | 09.01.95 |
| 2887 | 5 | 15.01.97 | ER | | CHECKED 12-2-1999-16:00 |
| 2621 | 4 | 02.02.96 | CL | | APPR. 13.01.95 |
| 2442 | 3 | 05.09.95 | CL | | #SCH. 6 |
| 2268 | 2 | 31.07.95 | CL | NAME: AMP-150 | VERSION: 6 |
| | | | | MODULE: AC1226A | DWG. NO.: 15569 |
| | | | | | PROJECT: PROJECT |

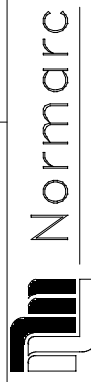


Copyright and all modification rights reserved NAVIA AVIATION AS, NORWAY

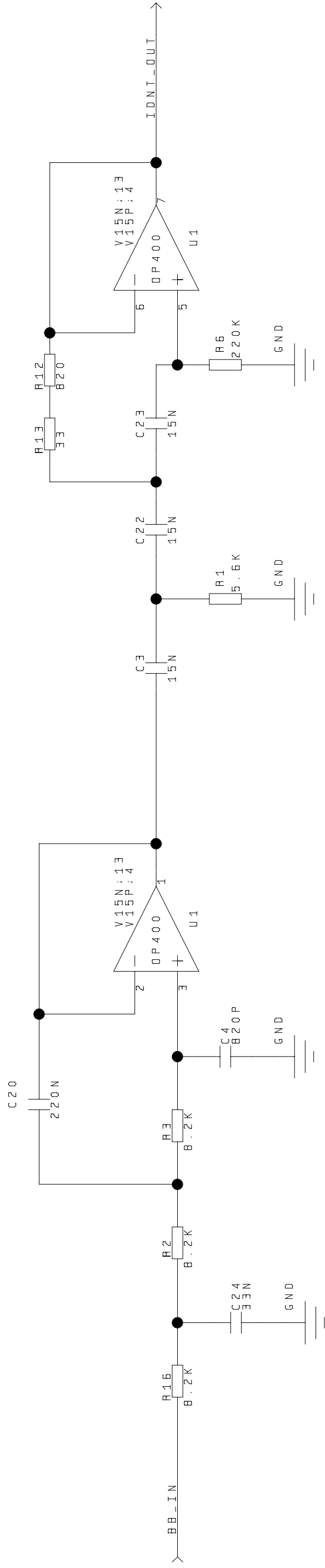
VERSION: 6
 DWG. NO.: 15569
 PROJECT: PROJECT



| REF. NO. | ISSUE | DATE | SIGN | DESCRIPTION | CL |
|----------|-------|----------|------|-----------------|-------------------------|
| 3590 | 6 | 02.12.99 | ARM | CIRCUIT DIAGRAM | 09.01.95 |
| 2887 | 5 | 15.01.97 | ER | | CHECKED 12-2-1999-15.59 |
| 2621 | 4 | 02.02.96 | CL | | APPR. 13.01.95 |
| 2442 | 3 | 05.09.95 | CL | | #SCH. 6 |
| 2268 | 2 | 31.07.95 | CL | NAME: AMP_90 | SIZE: A3 |
| | | | | MODULE: AC1226A | VERSION: 6 |
| | | | | DWG. NO.: 15569 | PROJECT: PROJECT |



Copyright and all modification rights reserved NAVIAVIATION AS, NORWAY



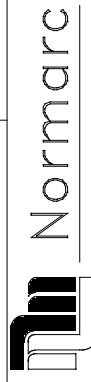
| REF. NO. | ISSUE | DATE | SIGN |
|----------|-------|----------|------|
| 3590 | 6 | 02.12.99 | ARM |
| 2887 | 5 | 15.01.97 | ER |
| 2621 | 4 | 02.02.96 | CL |
| 2442 | 3 | 05.09.95 | CL |
| 2268 | 2 | 31.07.95 | CL |

| DESCRIPTION | | CL |
|-----------------|-----------------|----------|
| CIRCUIT DIAGRAM | | 09.01.95 |
| CHECKED | 12-2-1999-16:45 | TMA |
| APPR. | 13.01.95 | JSA |

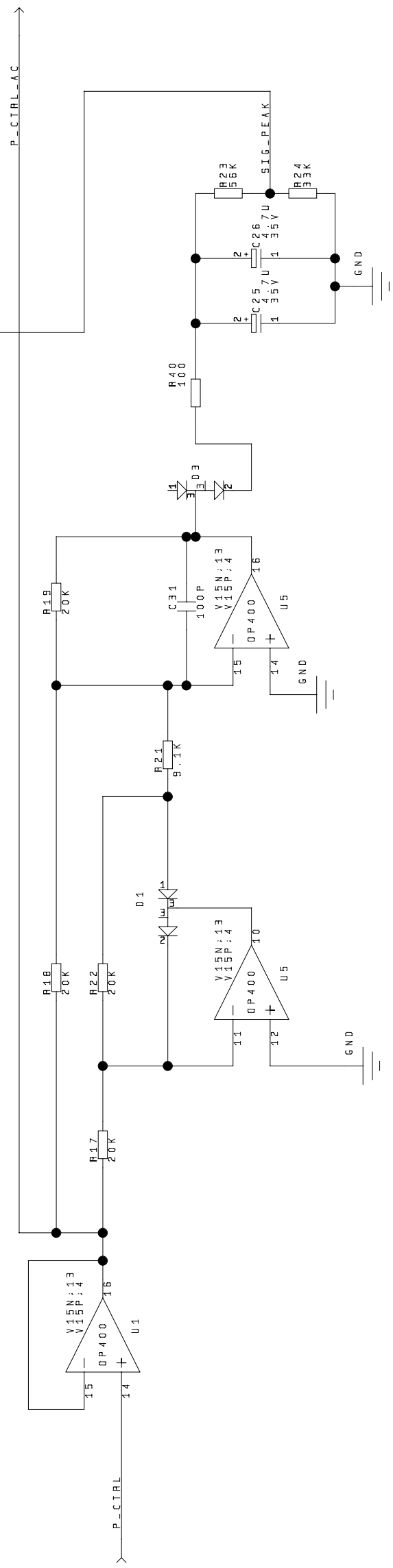
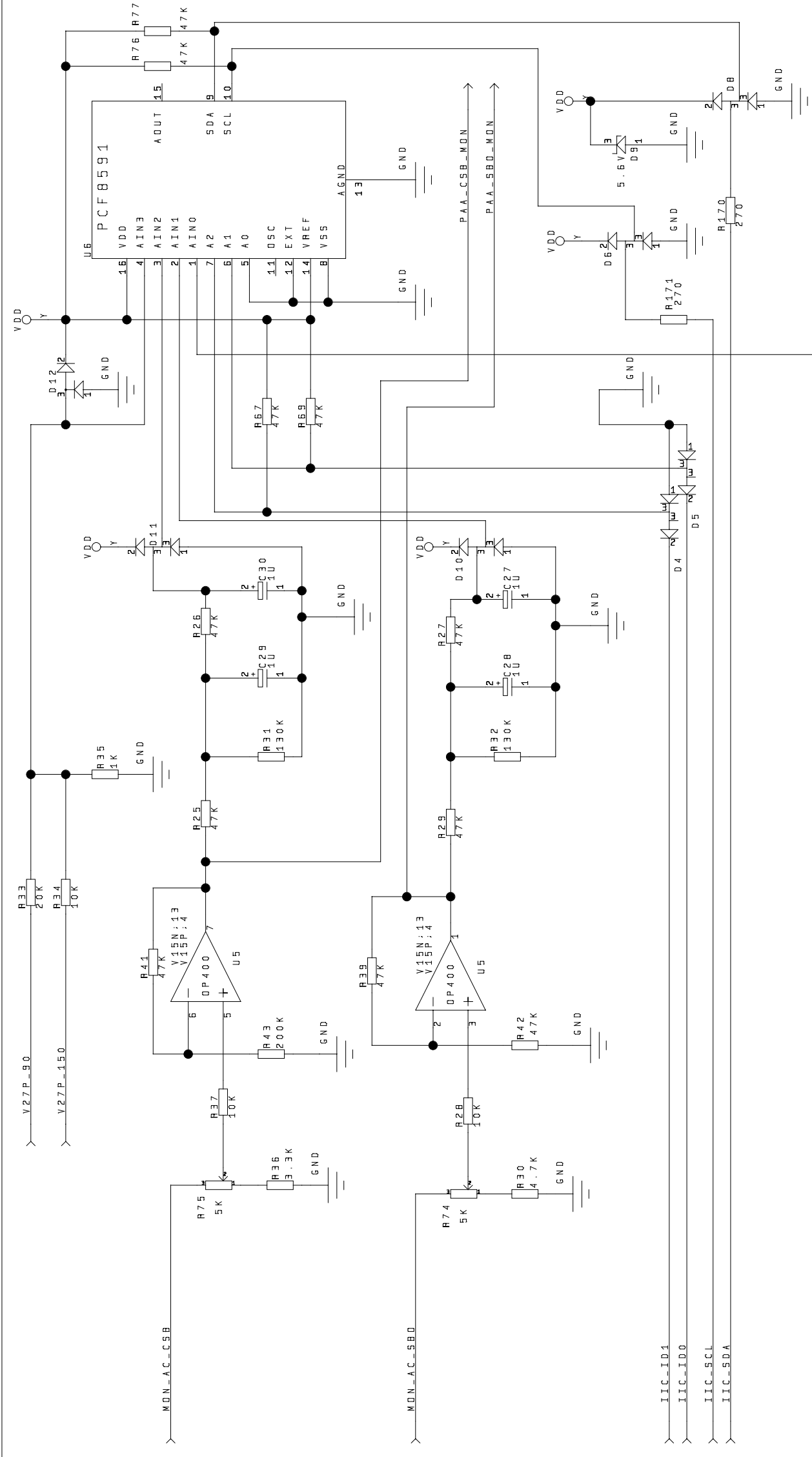
| NAME | MODULE | SIZE | SHEET |
|----------|---------|------|-------|
| IDNT-FIL | AC1226A | A3 | 4 |


| DWG. NO. | VERSION |
|----------|---------|
| 15569 | 6 |

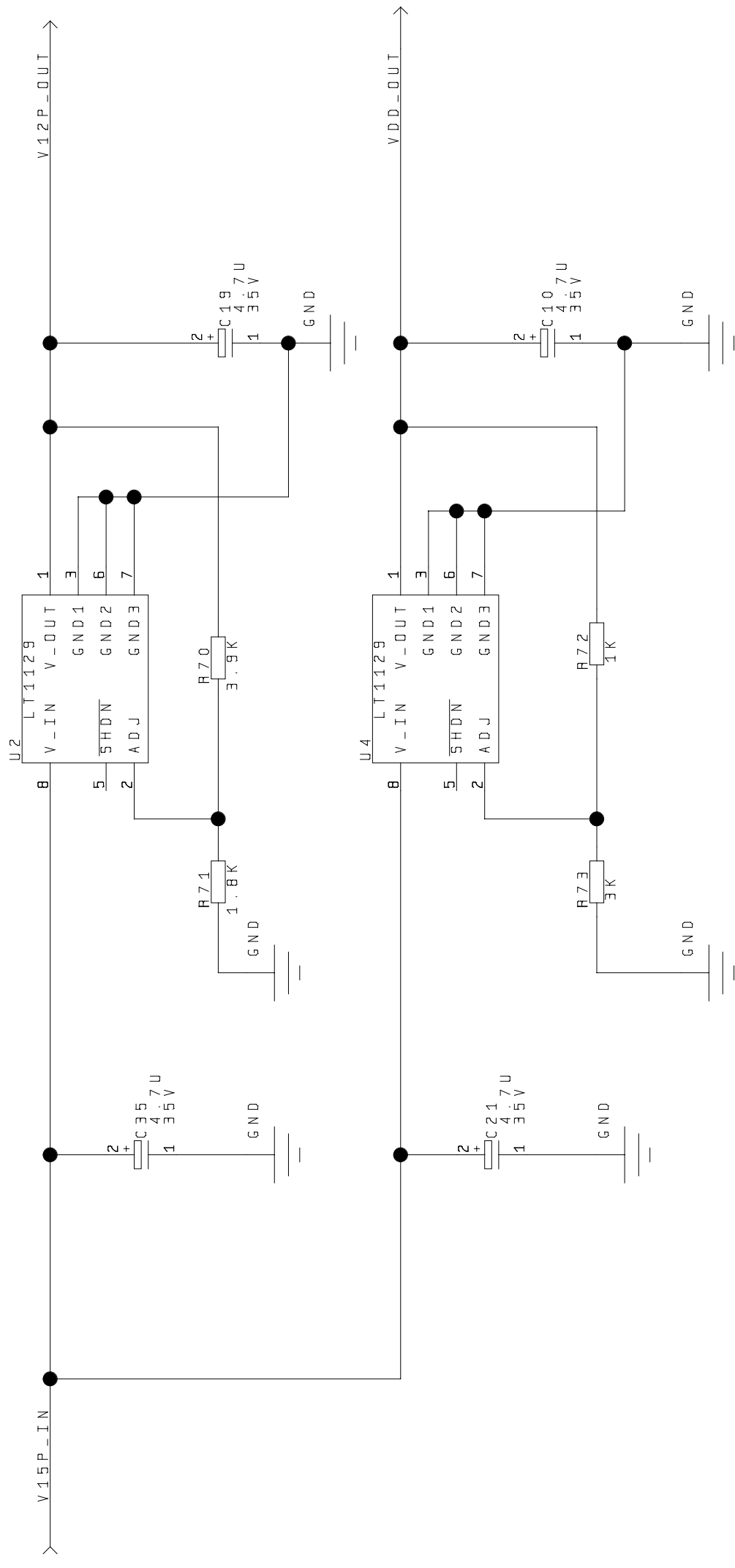
| PROJECT |
|--|
| Copyright and all modification rights reserved NAVIA AVIATION AS, NORWAY |



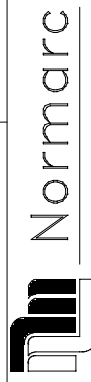
Copyright and all modification rights reserved NAVIA AVIATION AS, NORWAY



| DESCRIPTION | | DRAWN | | CHECKED | | APPR. | | #SCH. | | #HDL. | | SIZE | | VERSION | |
|---|-------|----------|------|-----------------|--|-----------------|--|---------|--|---------|--|-------|--|---------|--|
| 3590 | 6 | 02.12.99 | ARM | CIRCUIT DIAGRAM | | 12-2-1999-16.11 | | 6 | | A3 | | J5A | | TMA | |
| 2887 | 5 | 15.01.97 | ER | | | 13.01.95 | | | | | | | | | |
| 2621 | 4 | 02.02.96 | CL | | | | | | | | | | | | |
| 2442 | 3 | 05.09.95 | CL | | | | | | | | | | | | |
| 2268 | 2 | 31.07.95 | CL | | | | | | | | | | | | |
| REF.NO. | ISSUE | DATE | SIGN | MODULE | | PROJECT | | DWG.NO. | | VERSION | | SHEET | | SHEET | |
| | | | | MAINTMON | | AC1226A | | 15569 | | 6 | | A3 | | 5 | |
|  Copyright and all modification rights reserved NAVIAVIATION AS, NORWAY | | | | | | | | | | | | | | | |



| DESCRIPTION : | | CL | CL |
|--|-----------------|-----------|-----------|
| CIRCUIT DIAGRAM | | 09.01.95 | TMA |
| 3590 | 6 | 02.12.99 | ARM |
| 2887 | 5 | 15.01.97 | ER |
| 2621 | 4 | 02.02.96 | CL |
| 2442 | 3 | 05.09.95 | CL |
| 2268 | 2 | 31.07.95 | CL |
| REF. NO. | ISSUE | DATE | STGN |
| VOLT_REG | | MODULE : | VERSION : |
| A C 1 2 2 6 A | | A 3 | 1 5 5 6 9 |
| DRAWN | | 09.01.95 | PROJECT : |
| CHECKED | 12-2-1999-16:10 | | |
| APPR. | 13.01.95 | | |
| #SCH. : | #HDL : | SIZE : | SHEET : |
| 6 | | A 3 | 6 |
| DWG. NO. : | | VERSION : | |
| 1 5 5 6 9 | | 6 | |
| PROJECT : | | | |
| Copyright and all modification rights reserved NAVIA AVIATION AS, NORWAY | | | |



Copyright and all modification rights reserved NAVIA AVIATION AS, NORWAY

5.2 *Photos*

| Type | S.no. | Ver. |
|---------|-------|------|
| AC1226A | 1444 | 3 |

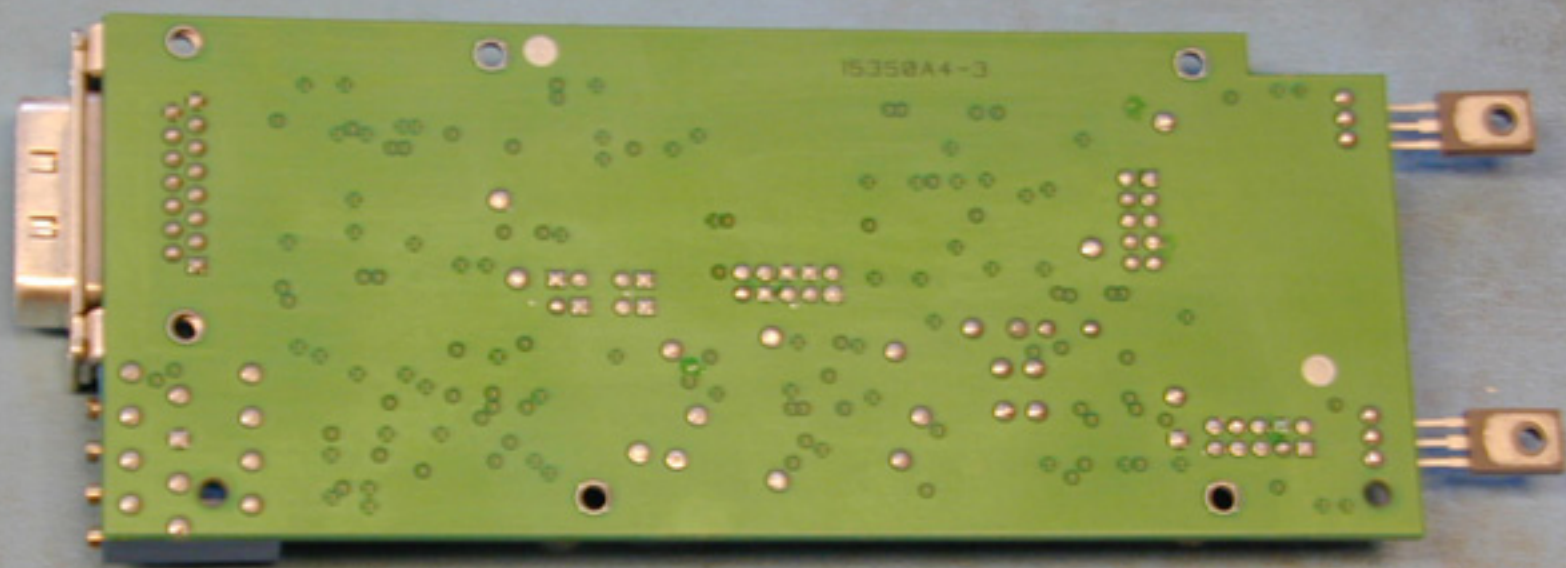
99
0179

NORMARC
AC1226



127

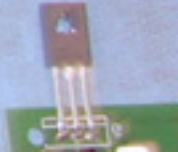
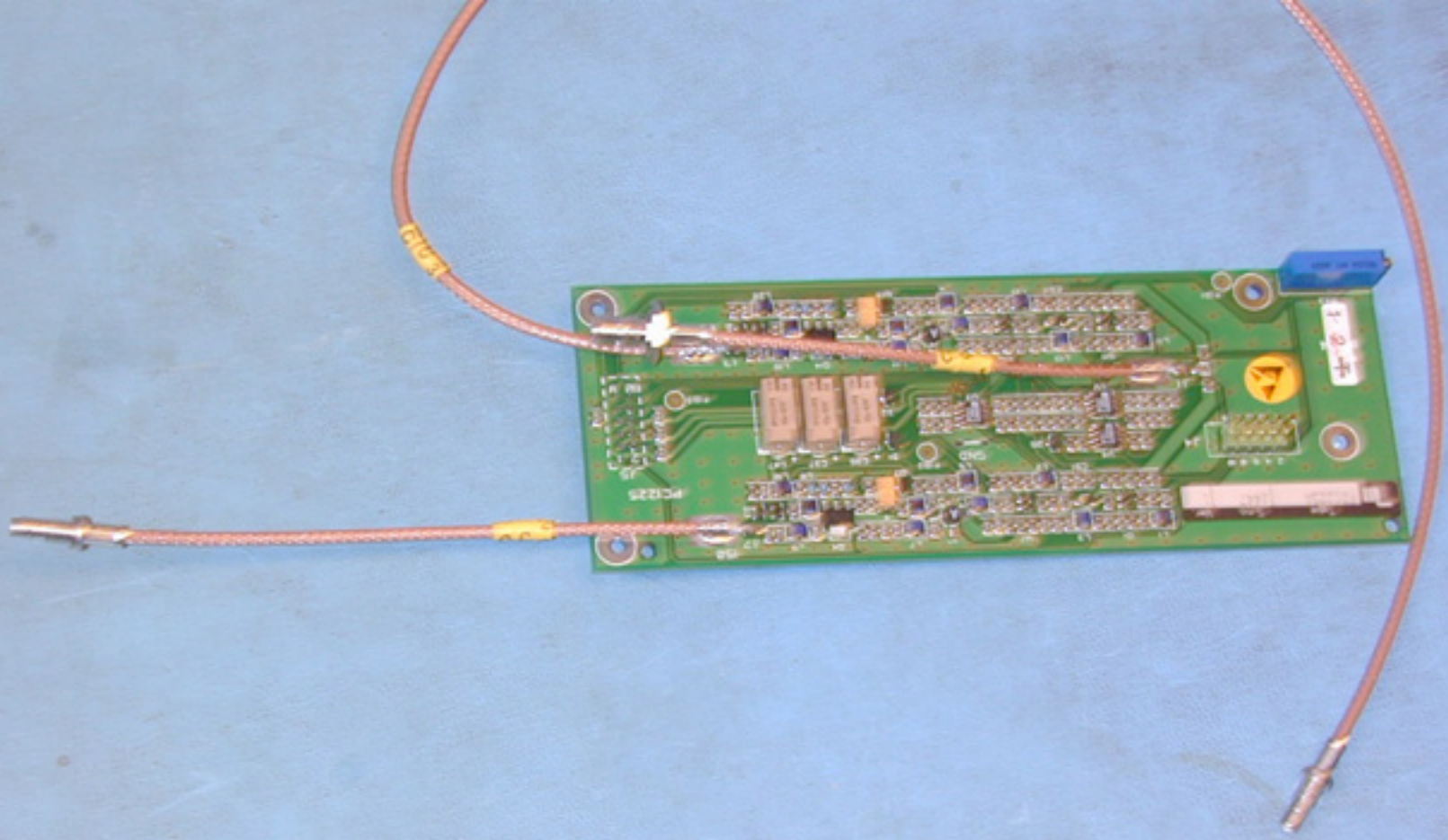
0000P 100 Ohm 1% 0502
0001P 100 Ohm 1% 0502
0002P 100 Ohm 1% 0502
0003P 100 Ohm 1% 0502

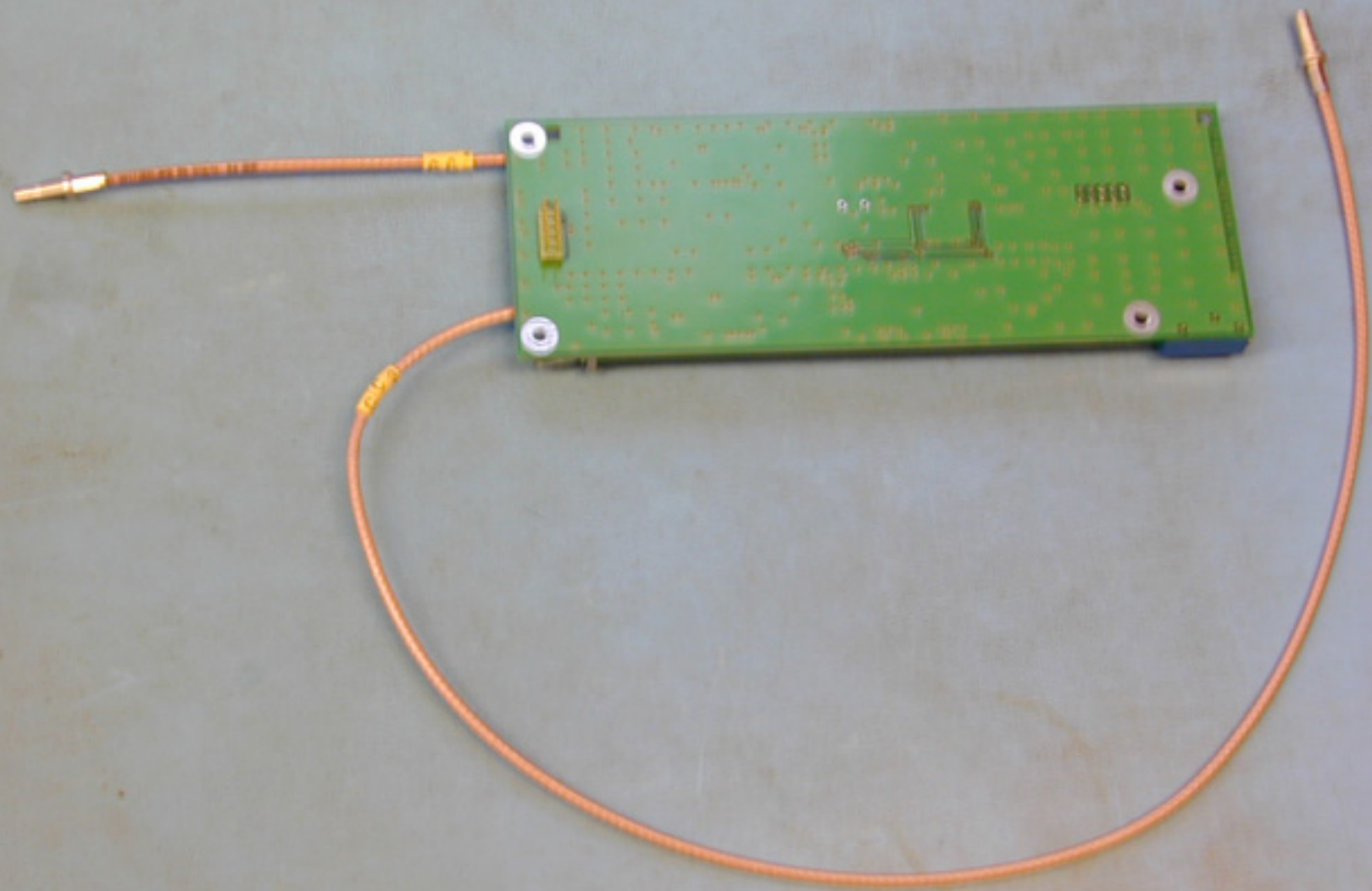


6 PC1225A PHASE CONTROL

6.1 *Schematic Diagrams*

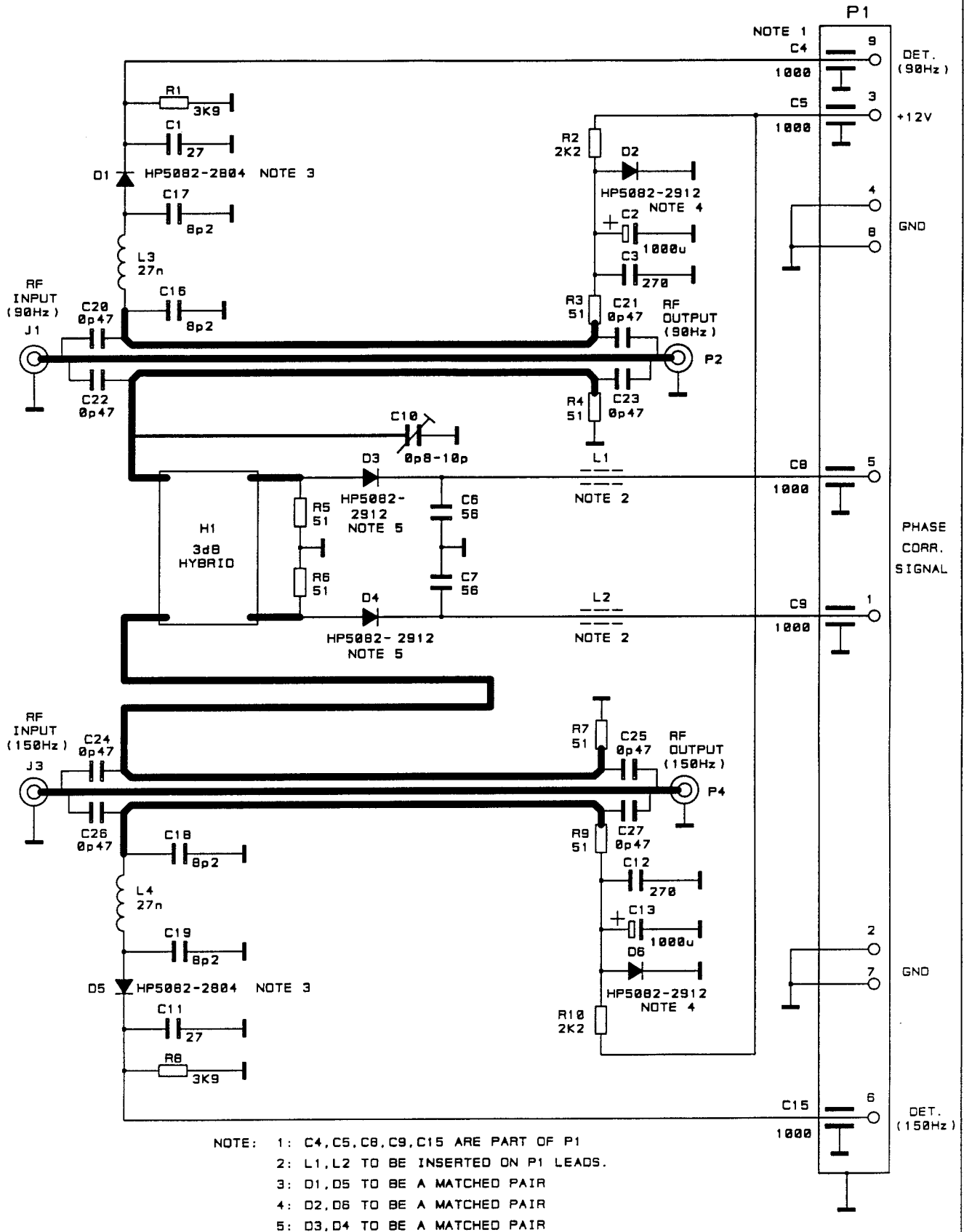
6.2 *Photos*





7 FD1236A FEEDBACK DETECTOR

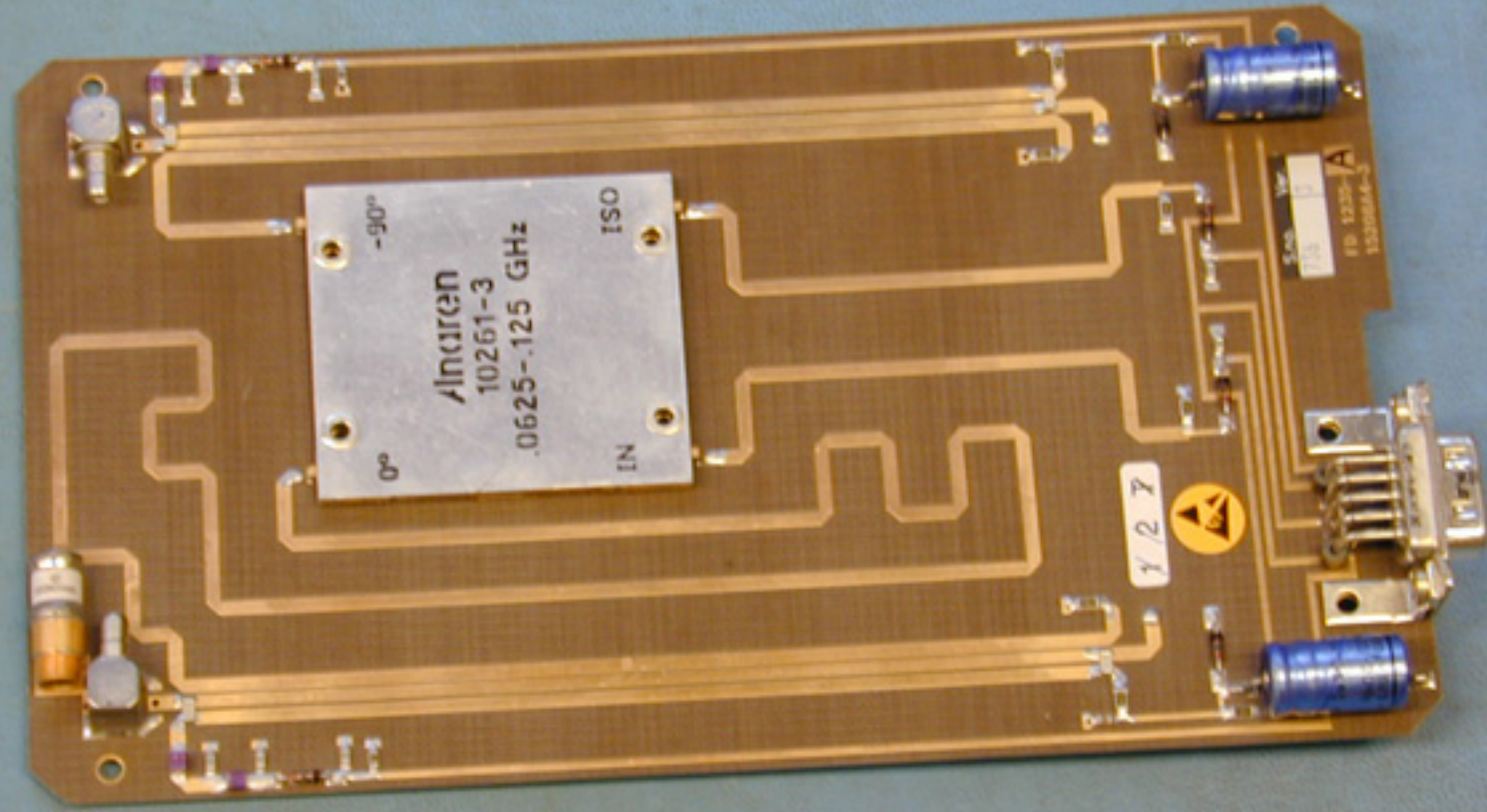
7.1 *Schematic Diagrams*



| | | | | | | | | |
|----------|-------|--------|---|------------|-----------|---------|----------|------|
| | | | TITLE: CIRCUIT DIAGRAM GP COURSE FEEDBACK DETECTORS | | SCALE | DRAWN | 27.05.94 | TBJ |
| | | | SUBJECT: FD 1236A | | | CHECKED | 27.08.95 | S.H. |
| | | | | | | APPR. | 27.09.94 | J.Sa |
| | | | | | SUP FOR: | SUP BY: | | |
| | | | | | DWG. NO.: | 15390A4 | | 2 |
| 2413 | 2 | 290895 | TBJ | | | | | |
| REF. NO. | ISSUE | DATE | SIGN | FILENAME : | | | | |

 NORMARC A/S

7.2 Photos (FD1236A)

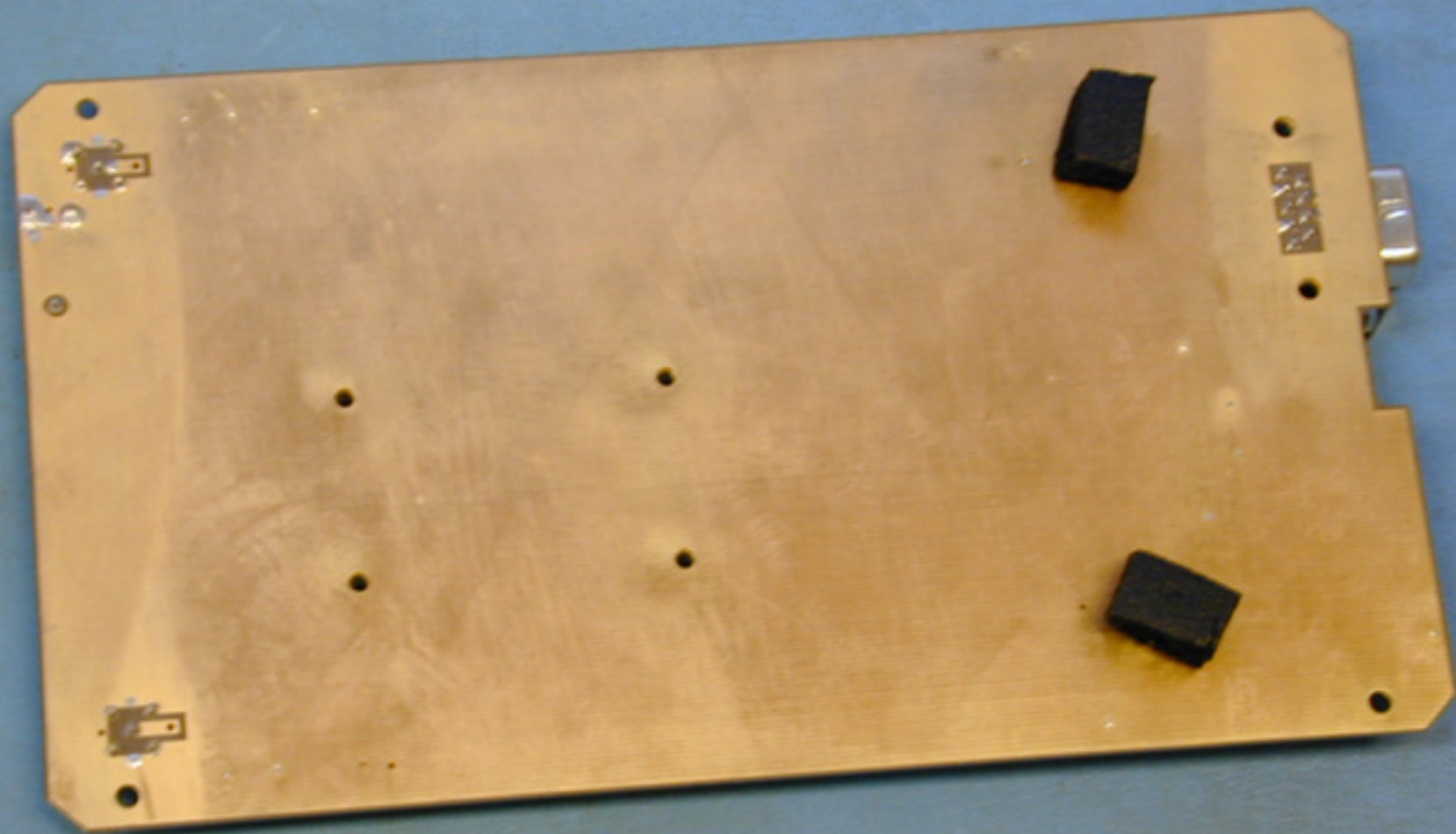


Alnaren
10261-3
.0625-.125 GHz
IN ISO
0° -90°

Y 2 7



10 1230-A
1230844-3



8 CD 1238A COMBINER DETECTOR

8.1 *Schematic Diagrams*

8.2 Photos (CD1237A)

