

FCC TEST REPORT

Product : hello kitty remote control scooter and car
Trade mark : N/A
Model/Type reference : 10962, 10964
Serial Number : N/A
Ratings : DC 9V
FCC ID : ORJTX
Report Number : EESZE06250014-3
Date : Jul. 13, 2012
Regulations : See below

Test Standards	Results
<input checked="" type="checkbox"/> 47 CFR FCC Part 15 Subpart C 15.227:2011	PASS

Prepared for:
7158548 CANADA INC./BOJEUX INC.
7760 GRENACHE, MONTREAL, QC, H1J 1C3

Prepared by:
Centre Testing International (Shenzhen) Co., Ltd.
Hongwei Industrial Zone, Bao'an 70 District,
Shenzhen, Guangdong, China
TEL: +86-755-3368 3668
FAX: +86-755-3368 3385

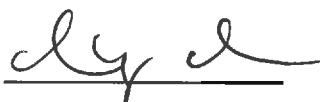

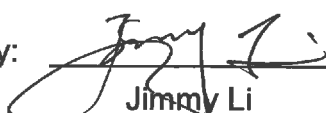
Tested by:  Reviewed by: 
Approved by:  Date: Jul. 13, 2012
Jimmy Li
Lab manager



TABLE OF CONTENTS

Description	Page
1. GENERAL INFORMATION	3
2. TEST SUMMARY	3
3. MEASUREMENT UNCERTAINTY	3
4. PRODUCT INFORMATION	4
5. FACILITIES AND ACCREDITATIONS	4
5.1 TEST FACILITY.....	4
5.2 TEST EQUIPMENT LIST.....	4
6. SYSTEM TEST CONFIGURATION.....	5
6.1 JUSTIFICATION.....	5
6.2 EUT EXERCISING SOFTWARE.....	5
7. RADIATED EMISSIONS MEASUREMENT	6
7.1 LIMITS.....	6
7.2 BLOCK DIAGRAM OF TEST SETUP.....	6
7.3 TEST PROCEDURE	7
7.4 TEST RESULT AND GRAPHS.....	8
8. 20DB BANDWIDTH MEASUREMENT	11
8.1. LIMITS.....	11
8.2. BLOCK DIAGRAM OF TEST SETUP.....	11
8.3. TEST PROCEDURE	11
8.4. TEST RESULT	11
APPENDIX 1 PHOTOGRAPHS OF TEST SETUP.....	12
APPENDIX 2 EXTERNAL PHOTOGRAPHS OF EUT	13
APPENDIX 3 INTERNAL PHOTOGRAPHS OF EUT.....	15

N/A means not applicable.

1. GENERAL INFORMATION

Applicant: 7158548 CANADA INC./BOJEUX INC.
7760 GRENACHE, MONTREAL, QC, H1J 1C3
Manufacturer: LANSAY
Equipment Authorization: FCC Part 15 Certification
FCC ID: ORJTX
Product: hello kitty remote control scooter and car
Trade mark: N/A
Model/Type reference: 10962, 10964
Model difference: The two models are identical except appearance.
Serial Number: N/A
Report Number: EESZE06250014-3
Date of Test: Jul. 28, 2012 to Jul. 13, 2012

The above equipment was tested by Centre Testing International for compliance with the requirements set forth in the FCC Rules and Regulations Part 15, Subpart C and the measurement procedure according to ANSI C63.4:2003.

2. TEST SUMMARY

Clause	Test Item	Rule	Result
1	Radiated Emissions (Fundamental)	FCC 15.227(a)	PASS
2	Radiated Emission (9kHz – 1GHz)	FCC 15.227(b) & FCC 15.209	PASS
3	20 dB Bandwidth	FCC 15.215(c)	PASS
4	Antenna Requirements	FCC 15.203	PASS*

* Telescope-type antenna with unique antenna connector.

3. MEASUREMENT UNCERTAINTY

This uncertainty represents an expanded uncertainty expressed at approximately the 95% confidence level using a coverage factor of k=2.

Measurement items	Uncertainty
Radiated Emissions	4.5 dB

4. PRODUCT INFORMATION

Items	Description
Rating	DC 9V
EUT type	Intentional Transmitter
Modulation	FSK
Operated Frequency	27.145MHz

5. FACILITIES AND ACCREDITATIONS

5.1 TEST FACILITY

All test facilities used to collect the test data are located at Hongwei Industrial Zone, Bao'an 70 District, Shenzhen, Guangdong, China. The site and apparatus are constructed in conformance with the requirements of ANSI C63.4, CISPR 16-1-1 and other equivalent standards.

5.2 TEST EQUIPMENT LIST

Instrumentation: The following list contains equipments used at CTI for testing. The calibrations of the measuring instruments, including any accessories that may effect such calibration, are checked frequently to assure their accuracy. Adjustments are made and correction factors applied in accordance with instructions contained in the manual for the measuring instrument.

Equipment used during the tests:

3M Semi-anechoic Chamber - Radiated Emission Test				
Equipment	Manufacturer	Model	Serial No.	Due Date
3M Chamber & Accessory Equipment	ETS-LINDGREN	FACT-3	3510	07/09/2013
Spectrum Analyzer	Agilent	E4440A	MY46185649	03/07/2013
TRILOG Broadband Antenna	schwarzbeck	VULB 9136	401	07/06/2013
Multi device Controller	ETS-LINGREN	2090	00057230	N/A
Loop Antenna	ETS-LINDGERN	6502	71730	07/06/2013

6. SYSTEM TEST CONFIGURATION

6.1 JUSTIFICATION

For emission testing, the equipment under test (EUT) setup to transmit continuously to simplify the measurement methodology. Care was taken to ensure proper power supply voltages during testing. During testing, all cables were manipulated to produce worst case emissions. It was powered by 9 V DC of battery. Only the worst case data were recorded in this test report.

The signal is maximized through rotation and placement in the three orthogonal axes. The antenna height and polarization are varied during the search for maximum signal level. The antenna height is varied from 1 to 4 meters. Radiated emissions are taken at three meters unless the signal level is too low for measurement at that distance. If necessary, a pre-amplifier is used and/or the test is conducted at a closer distance.

All readings are extrapolated back to the equivalent three meter reading using inverse scaling with distance. Analyzer resolution is 200Hz from 9kHz to 150kHz, 9kHz from 150kHz to 30MHz and 100kHz or greater for frequencies between 30MHz to 1000 MHz. The resolution is 1 MHz or greater for frequencies above 1000 MHz. The spurious emissions more than 20 dB below the permissible value are not reported.

Radiated emission measurement were performed the lowest radio frequency signal generated in the device which is greater than 9 kHz to the tenth harmonic of the highest fundamental frequency or to 40 GHz, whichever is lower.

The unit was operated standalone and placed in the center of the turntable.

The equipment under test (EUT) was configured for testing in a typical fashion (as the customers would normally use it). The EUT was placed on a turn table, and the Antenna of EUT was fully extended, which enabled the engineer to maximize emissions through its placement in the three orthogonal axes.

For simplicity of testing, the unit was wired to transmit continuously.

6.2 EUT EXERCISING SOFTWARE

No Software was used during testing.

7. Radiated Emissions Measurement

7.1 LIMITS

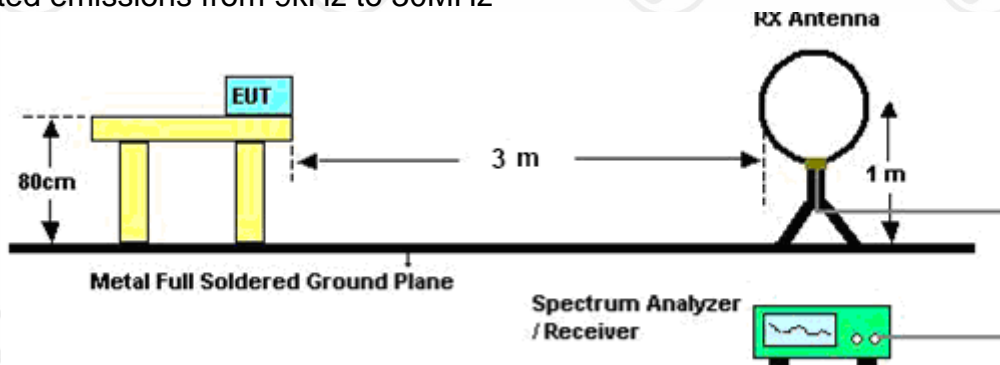
- (1) The field strength of any emission within this band shall not exceed 10,000 microvolts/meter at 3 meters. The emission limit in this paragraph is based on measurement instrumentation employing an average detector.
- (2) The field strength of any emissions, which appear outside of operating frequency band specified in 15.227, shall not exceed the general radiated emission limits as below.

Frequency (MHz)	Field strength ($\mu\text{V/m}$)	Distance (m)
0.009-0.490	$2400/F(\text{kHz})$	300
0.490-1.705	$24000/F(\text{kHz})$	30
1.705-30.0	30	30
30-88	100	3
88-216	150	3
216-960	200	3
Above 960	500	3

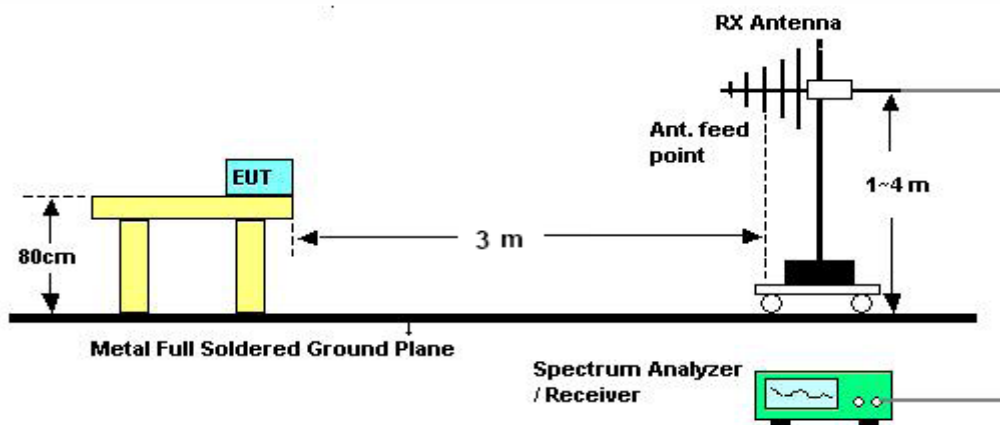
Note: the tighter limit applies at the band edges.

7.2 BLOCK DIAGRAM OF TEST SETUP

For radiated emissions from 9kHz to 30MHz



For radiated emissions from 30 - 1000MHz



7.3 TEST PROCEDURE

A. Above 30MHz

- a. The EUT was placed on the top of a turntable 0.8 meters above the ground in the chamber, 3 meters away from the antenna, which was mounted on the top of a variable-height antenna tower. The maximum values of the field strength are recorded by adjusting the polarizations of the test antenna and rotating the turntable.
- b. For each suspected emission, the EUT was arranged to its worst case and then the antenna was tuned to heights from 1 meter to 4 meters and the turn table was turned from 0 degrees to 360 degrees to find the maximum reading.
- c. The test frequency analyzer system was set to Peak Detect Function and Specified Bandwidth with Maximum Hold Mode.

B. Below 30MHz

- a. The EUT is placed on a turntable 0.8 meters above the ground in the chamber, 3 meter away from the antenna (loop antenna). The Antenna should be positioned with its plane vertical at the specified distance from the EUT and rotated about its vertical axis for maximum response at each azimuth about the EUT. The center of the loop shall be 1 m above the ground. For certain applications, the loop antenna plane may also need to be positioned horizontally at the specified distance from the EUT.
- b. For each suspected emission, the EUT was arranged to its worst case and then turn table was turned from 0 degrees to 360 degrees to find the maximum reading.
- c. The test frequency analyzer system was set to Peak Detect Function and Specified Bandwidth with Maximum Hold Mode.

7.4 TEST RESULT AND GRAPHS

Frequency (MHZ)	Polarization (H/V)	Emission PK (dB μ V/m)	Emission QP (dB μ V/m)	AV factor (dB)	Final emission AV (dB μ V/m)	Limit (dB μ V/m)			Results (P/F)
						PK	QP	AV	
27.1450*	H	58.20	---	---	---	100	---	80	P
39.7000	H	25.19	---	---	---	---	40	---	P
54.2500	H	25.03	---	---	---	---	40	---	P
135.0833	H	28.42	---	---	---	---	43.5	---	P
162.5667	H	29.38	---	---	---	---	43.5	---	P
190.0500	H	28.47	---	---	---	---	43.5	---	P
353.3333	H	34.02	---	---	---	---	46	---	P
27.1450*	V	72.71	---	---	---	100	---	80	P
52.6333	V	31.38	---	---	---	---	40	---	P
109.2167	V	28.04	---	---	---	---	43.5	---	P
135.0833	V	36.55	---	---	---	---	43.5	---	P
162.5667	V	42.26	41.15	---	---	---	43.5	---	P
190.0500	V	38.24	---	---	---	---	43.5	---	P
217.5333	V	26.84	---	---	---	---	46	---	P
353.3333	V	33.53	---	---	---	---	46	---	P
569.9667	V	38.42	---	---	---	---	46	---	P
597.4500	V	40.63	---	---	---	---	46	---	P
624.9333	V	41.14	39.62	---	---	---	46	---	P
652.4167	V	39.57	---	---	---	---	46	---	P

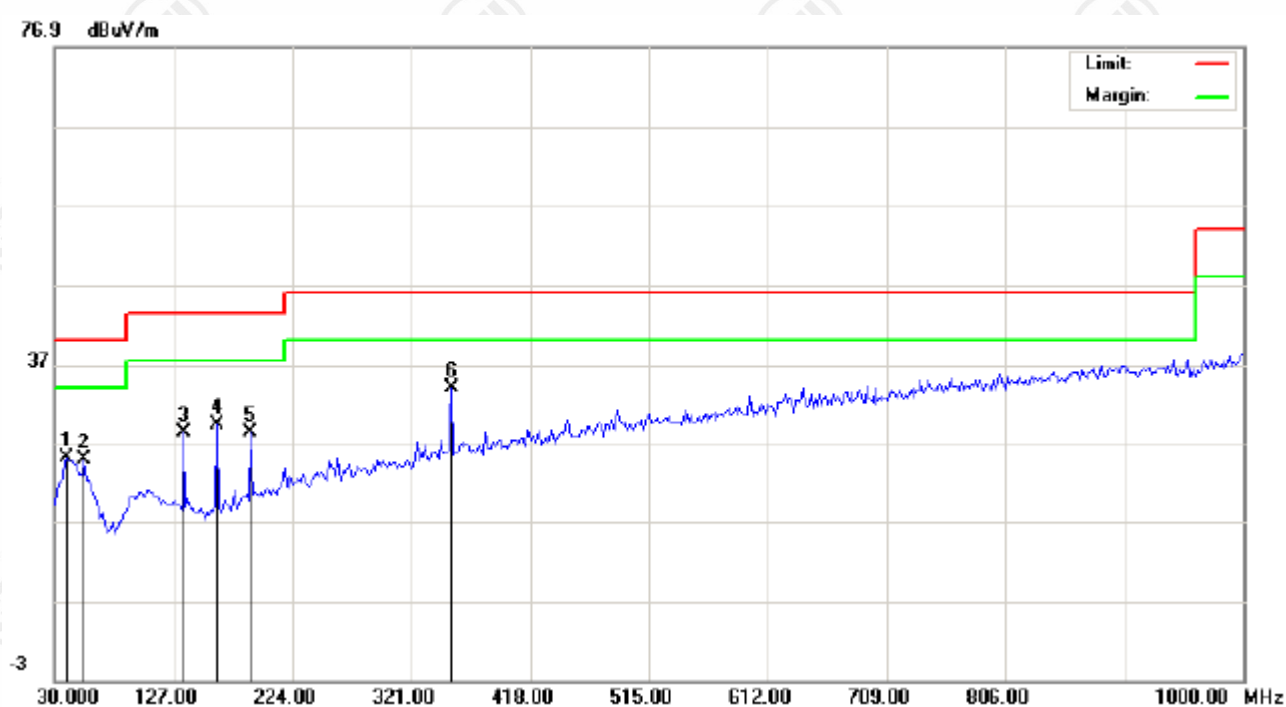
The peak data of other frequencies are all below the average limit (please refer to the test graph in following pages), so the average data of other frequencies are deemed to fulfill the average limits and not reported.

The emissions below 150kHz are not reported for they are much lower than the limits.

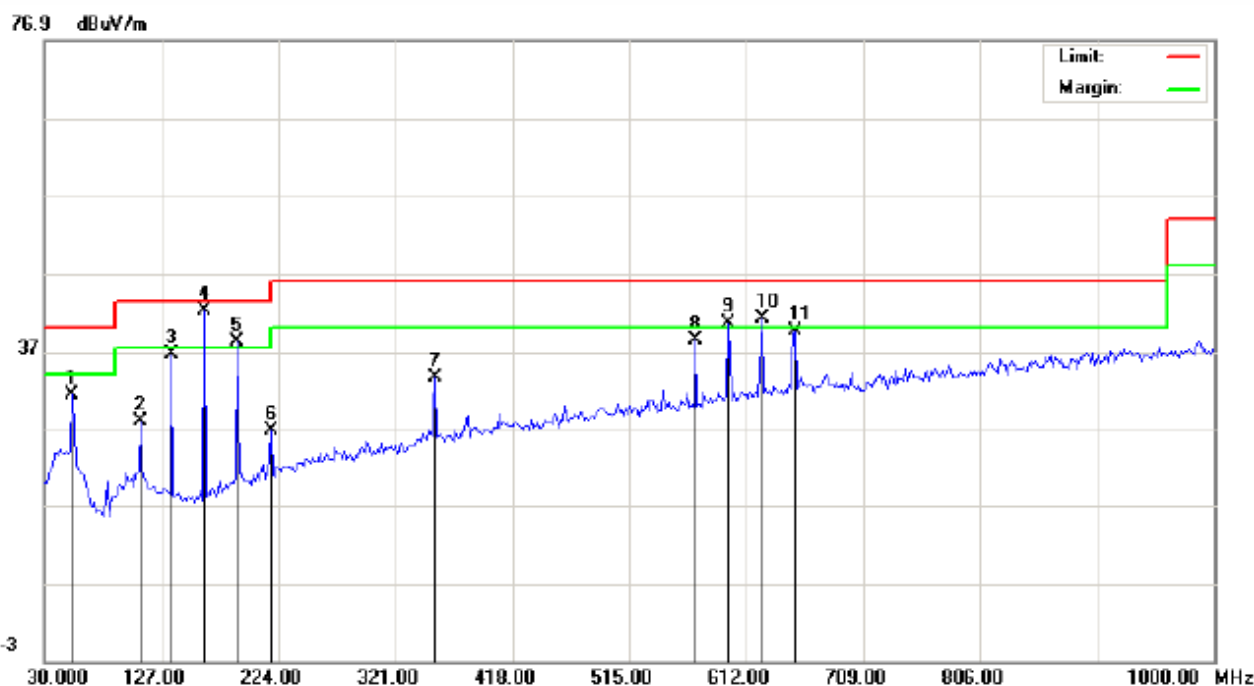
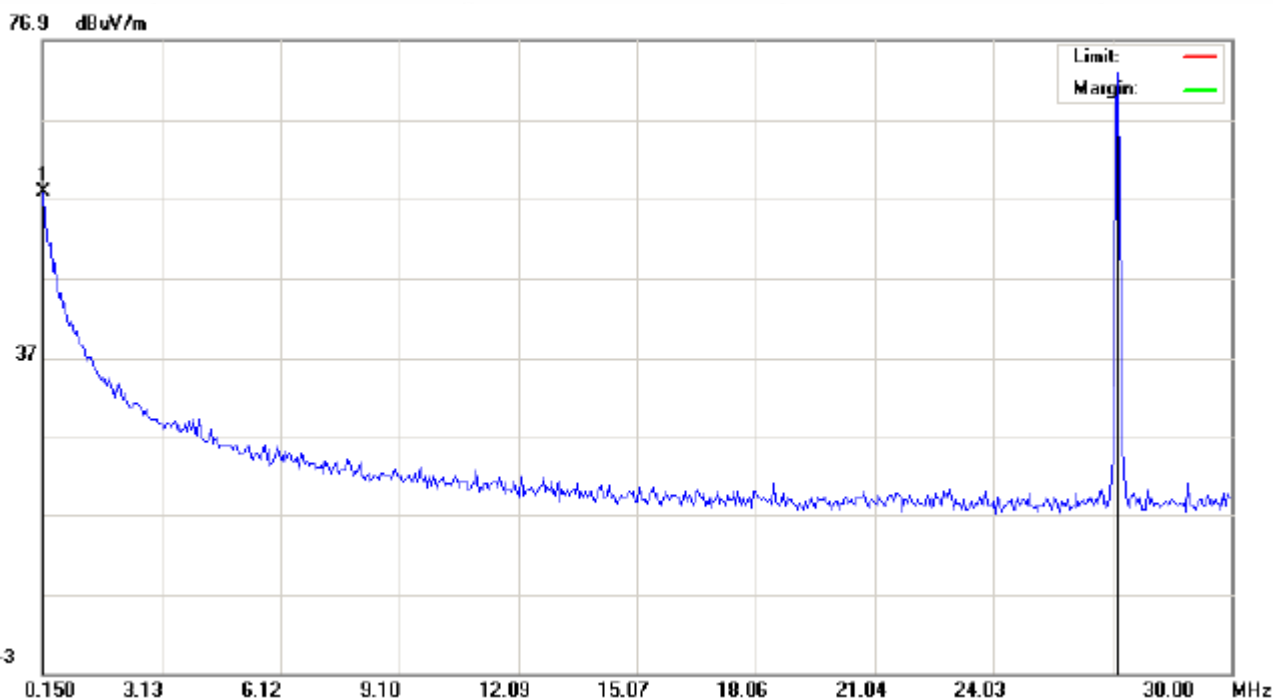
*: Operated frequency

Test graph of radiated emission:

H:



V:



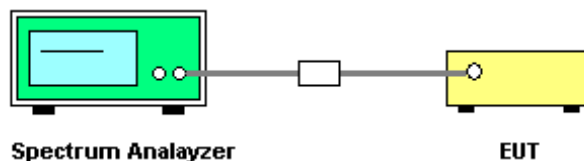
Note 1: The peak data of the fundamental frequency is below the average limit (please refer to the test graph as above), so the average data is deemed to fulfill the average limits and not reported.

8. 20DB BANDWIDTH MEASUREMENT

8.1. LIMITS

None

8.2. BLOCK DIAGRAM OF TEST SETUP

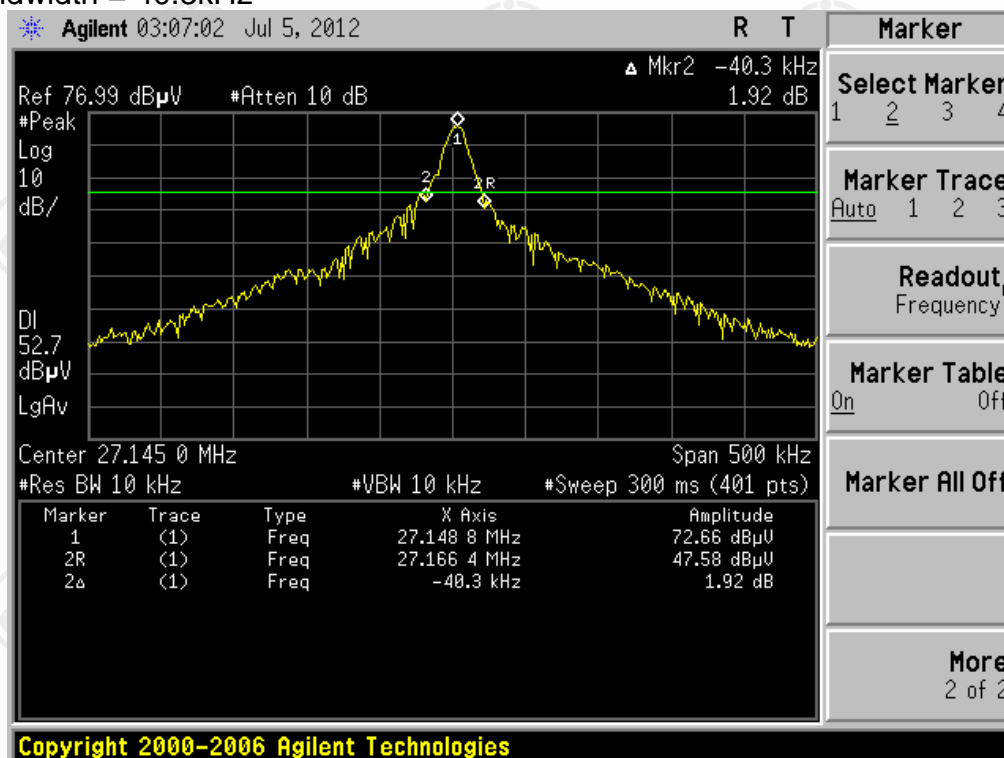


8.3. TEST PROCEDURE

1. The transmitter output (antenna port) was connected to the spectrum analyzer.
2. Set spectrum analyzer's RBW and VBW to applicable value with Peak in Max Hold.
3. A PEAK output reading was taken, a DISPLAY line was drawn 20 dB lower than PEAK level.
4. The 20dB bandwidth was determined from where the channel output spectrum intersected the display line.

8.4. TEST RESULT

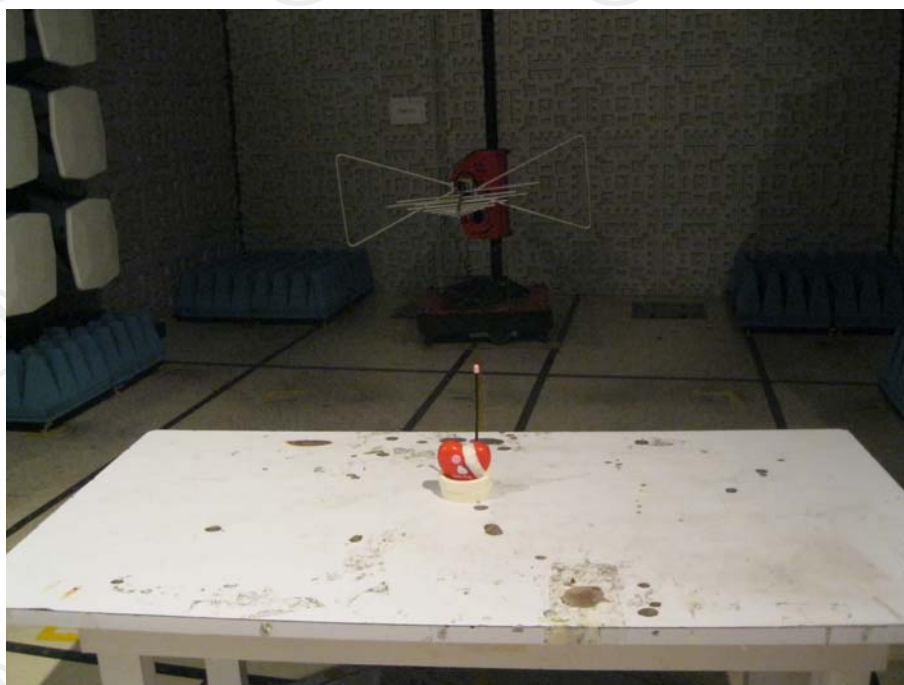
20dB bandwidth = 40.3kHz



APPENDIX 1 PHOTOGRAPHS OF TEST SETUP



TEST SETUP OF RADIATED EMISSION (9kHz-30MHz)



TEST SETUP OF RADIATED EMISSION (30MHz-1GHz)

APPENDIX 2 EXTERNAL PHOTOGRAPHS OF EUT



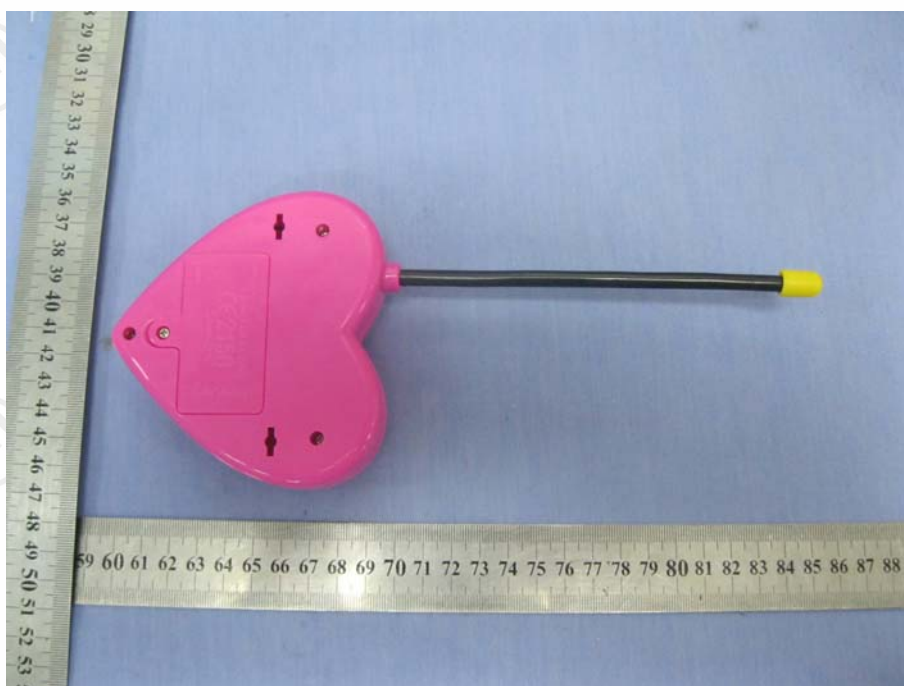
View of Product-1 (10962)



View of Product-2 (10962)



View of Product-1 (10964)



View of Product-2 (10964)

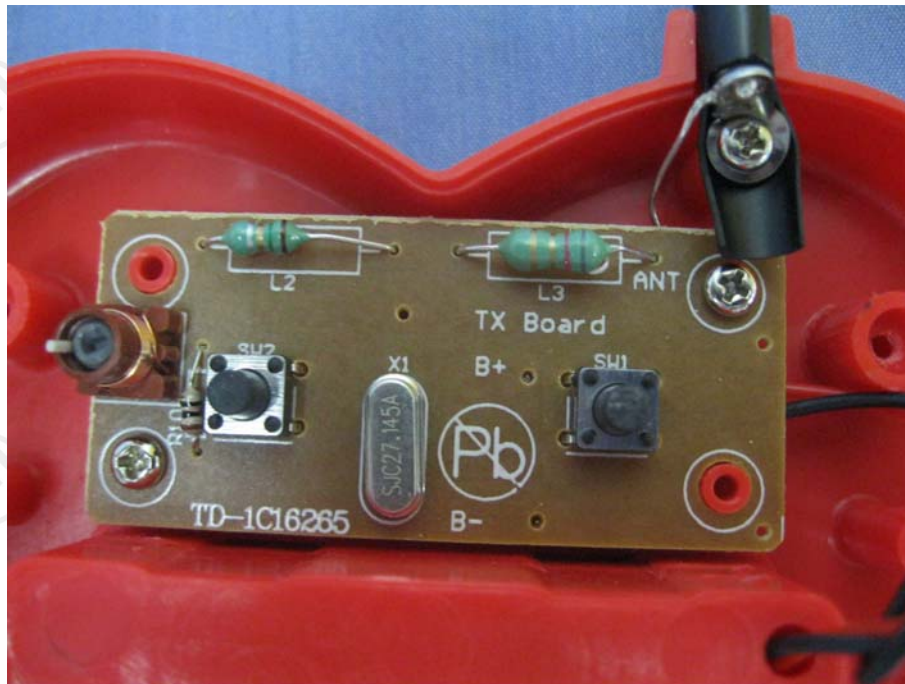
APPENDIX 3 INTERNAL PHOTOGRAPHS OF EUT



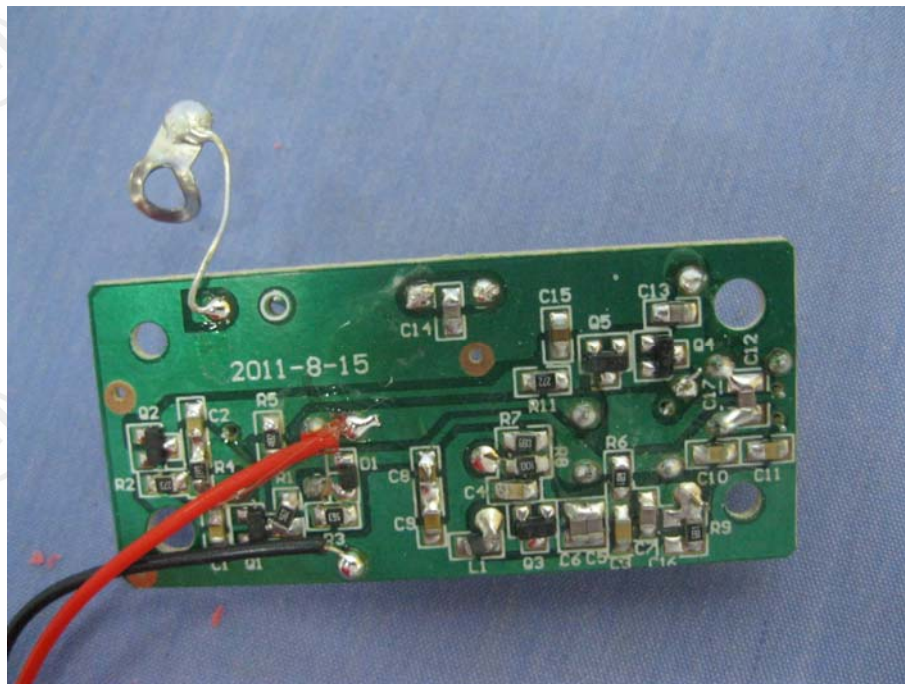
View of Internal Product-1



View of Internal Product-2



View of Internal Product-3



View of Internal Product-4

*** End of report ***

The test report is effective only with both signature and specialized stamp, The result(s) shown in this report refer only to the sample(s) tested. Without written approval of CTI, this report can't be reproduced except in full.