


Stamps.com P2 Printer




Installation Guide


Installing the printer driver via USB

1. Unzip the file "InstallP2v4.zip" to a temporary folder (for example c:\InstallP2v4\drivers)
2. Attach the power cable to the power adapter
3. Plug the power adapter into the DC power connector on the back of the printer. Plug the other end of the power cable into a power outlet
4. Connect the scale to the computer by attaching the "A" end of the USB cable to your computer and the "B" end of the USB cable to the printer.
5. Turn the printer on using the On/Off button  on the front of the printer. You will see a series of messages on your computer screen that indicate the printer has been detected by your computer. The "Found New Hardware" wizard will launch automatically to install the printer driver
6. Point the wizard to the temporary folder where the files were extracted (c:\InstallP2v4\drivers). Click
7. Click "Continue Anyway". The driver files will be copied automatically.

Loading Paper

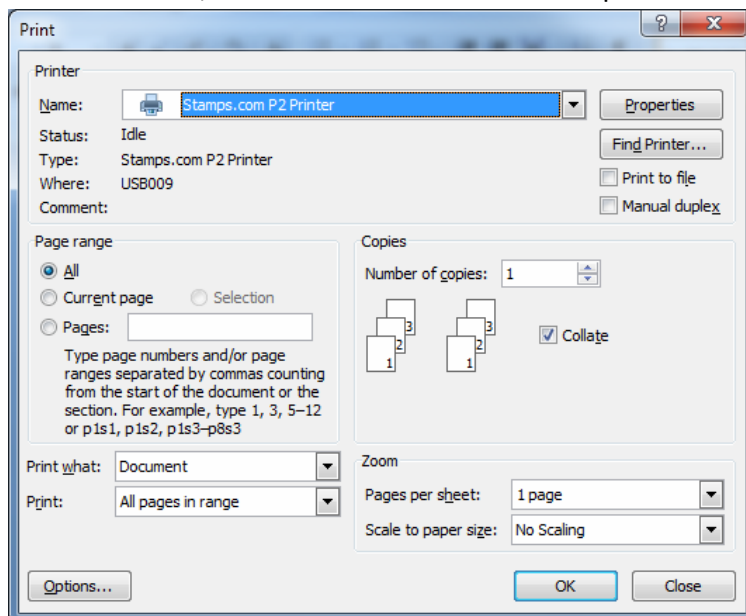
1. Switch Printer OFF 
2. Open the printer lid
3. Put paper in spool making sure the paper hole is on the left side
4. Put spool back into the printer. Pull the paper and make it pass under paper guides.



5. Close the lid
6. Switch the Printer ON
7. Press the Advance button  to position the paper

Printing via USB

1. Open the MS Word file P2Test.doc
2. From MS Word, click File → Print. Select “Stamps.com P2 Printer”



3. Click OK

Configuring LAN

The printer does not support automatic IP addressing or DHCP, it must be configured with a static IP address. The 2 FCC samples are shipped with the following configuration

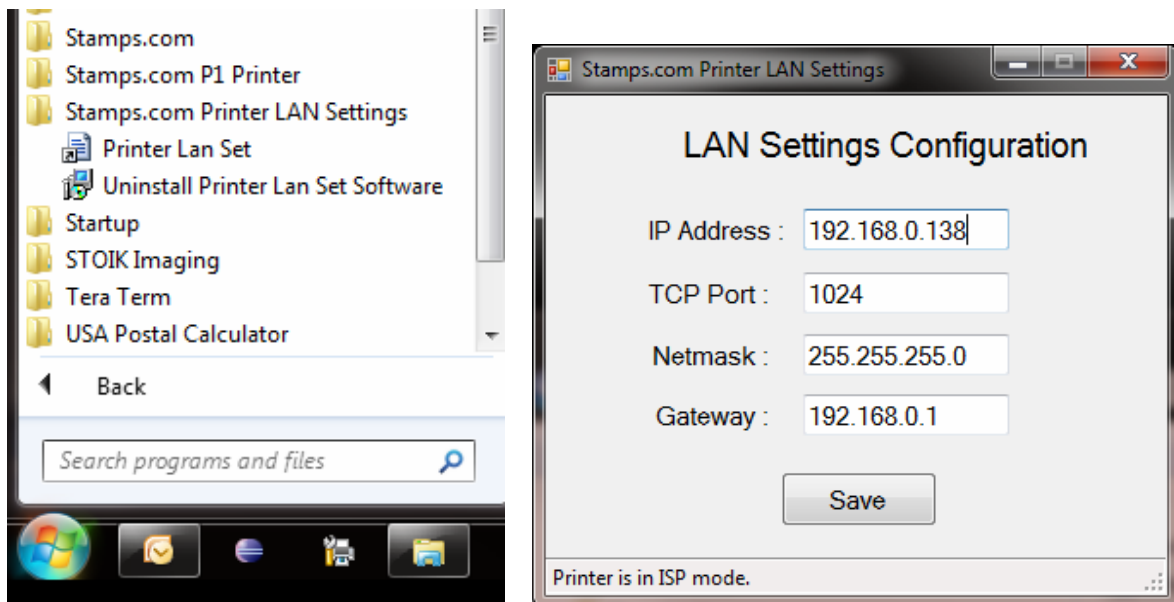
IP address: 192.168.0.130
TCP port: 1024
Netmask: 255.255.255.0
Gateway: 192.168.0.1

To change the LAN settings, install the LAN Setting Configuration Windows software
Unzip the file "lansettings.zip" to a folder and "Run" the "setup.exe" and click "Next" when prompted.

The printer must be put into "**ISP Mode**" (In-System Programming) in order to change the LAN settings. Follow the instruction below to do so.

1. Unplug the printer adaptor from the mains.
2. Connect the printer to the computer using a USB cable.
3. Plug the adaptor back into the mains. **Do not press the ON/OFF button.**
4. **Put the printer into "ISP Mode"** by holding the **Advance button down (do not release yet) and then press ON/OFF button.** Release the Advance button. The Blue LED on the Advance button will blink to denote that the printer is in "ISP Mode".

Click on the "**Printer Lan Set**" link to open the software and change the LAN settings.



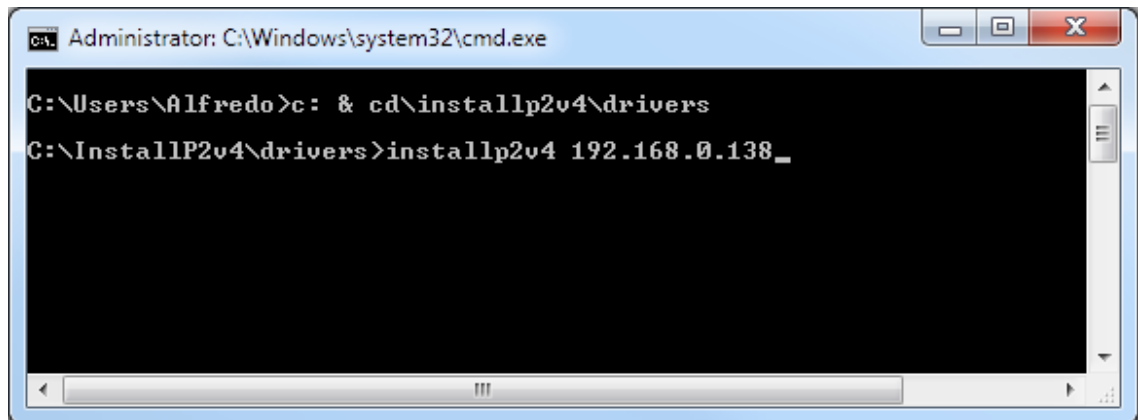
NOTE: Please do not change the TCP Port default value = 1024

Click “Save” button to confirm change.

Installing the LAN Printer

Installing the LAN printer in Windows XP:

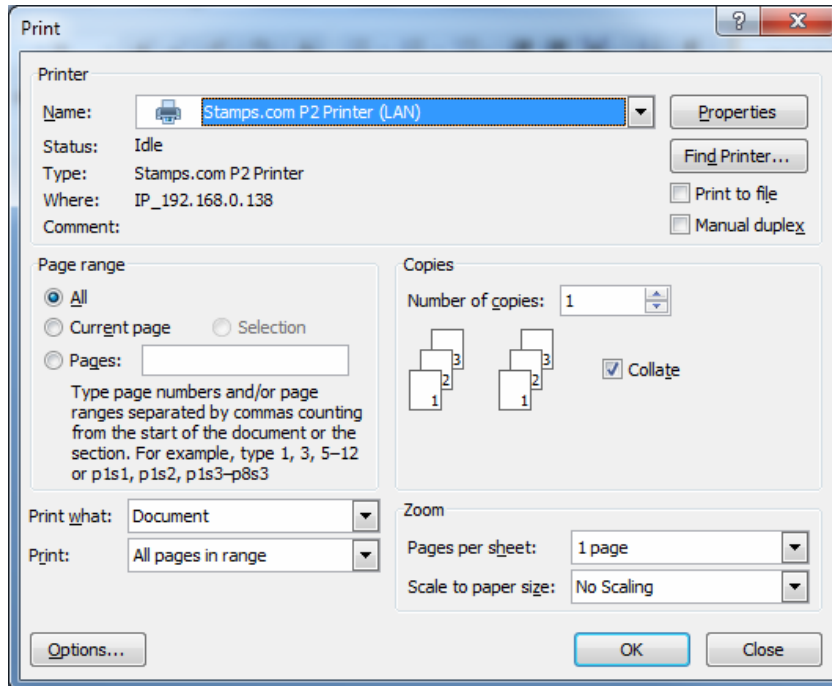
1. Open a DOS prompt and go to the drivers directory



2. Type “installp2v4 **ipaddress**” where **ipaddress** is the IP address that you have used (for example **installp2v4 192.168.0.138**)
3. Press Enter key
4. The printer will be installed as Stamps.com P2 Printer (LAN)

Printing via LAN

1. Open the MS Word file P2Test.doc
2. From MS Word, click File → Print. Select “Stamps.com P2 Printer (LAN)”



3. Click OK

Printer Web server

Open a browser and enter the address <http://192.168.0.138> to view the printer's simple web server.

FCC Statement

This equipment has been tested and found to comply with the limits for a Class B digital device, pursuant to part 15 of the FCC Rules. These limits are designed to provide reasonable protection against harmful interference when the equipment is operated in a commercial environment. This equipment generates, uses, and can radiate radiofrequency energy and, if not installed and used in accordance with the instruction manual, may cause harmful interference to radio communications. Operation of this equipment in a residential area is likely to cause harmful interference in which case the user will be required to correct the interference at his own expense.

FCC Caution

Any changes or modifications not expressly approved by the party responsible for compliance could void the user's authority to operate this equipment.

FCC Warning

This equipment has been tested and found to comply with the regulations for a Class B digital device, pursuant to Part 15 of the FCC Rules.

Operation is subject to the following two conditions:

- (1) This device may not cause harmful interference.
- (2) This device must accept any interference received including interference that may cause undesired operation.