

2.8 Installation of the Antenna

One of the advantages of this equipment is the easy-to-handle, lightweight and rugged antenna. Because the IRIDIUM[®] system is characterised by a good link margin, the antenna is a passive quadrifillar helix type, requiring no external power supply and consisting of only nonmoving parts.

The following figures show the antenna and the two different mounting accessories available:

The mounting bracket in fig. 1 can be used in two different ways - mounted on either a rail or a pole.

The fitting in fig. 2 can be used at the top of a tube. **Please note** that it is necessary to mount the cable, and seal this connection securely before the antenna and fitting are mounted on the tube.

Important!

For FCC RF exposure compliance, the antenna must be installed with a minimum distance of 20 cm away from all persons.

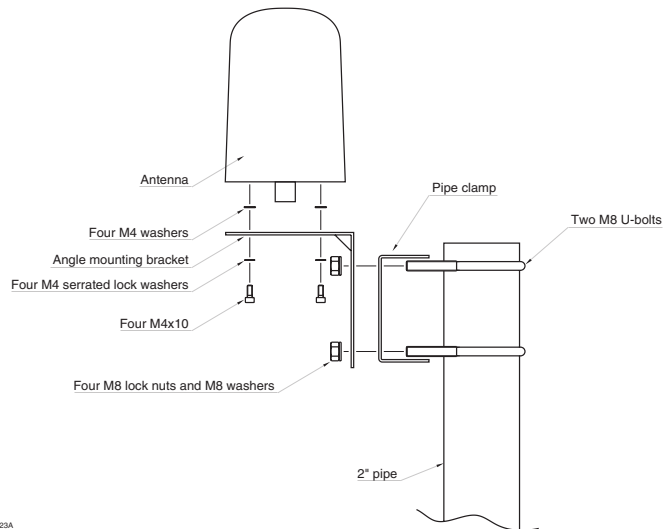


Fig. 1

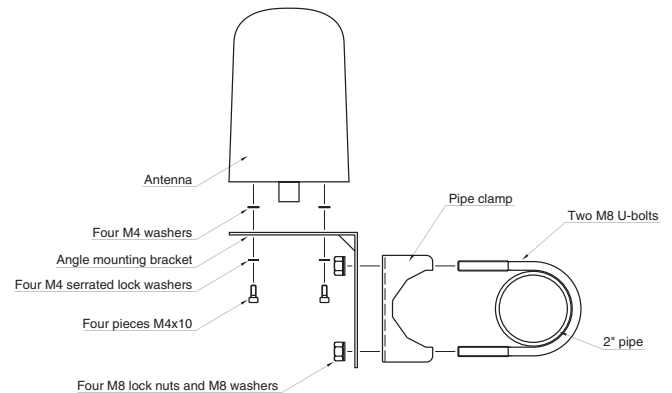


Fig. 2