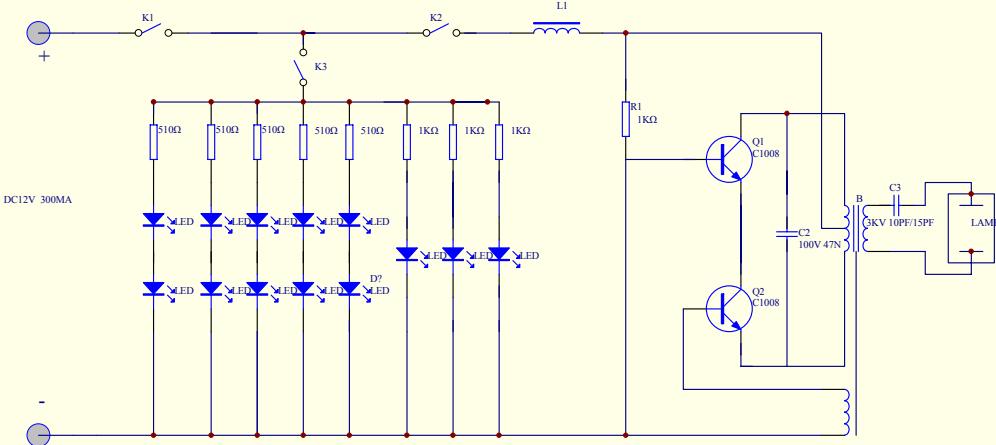
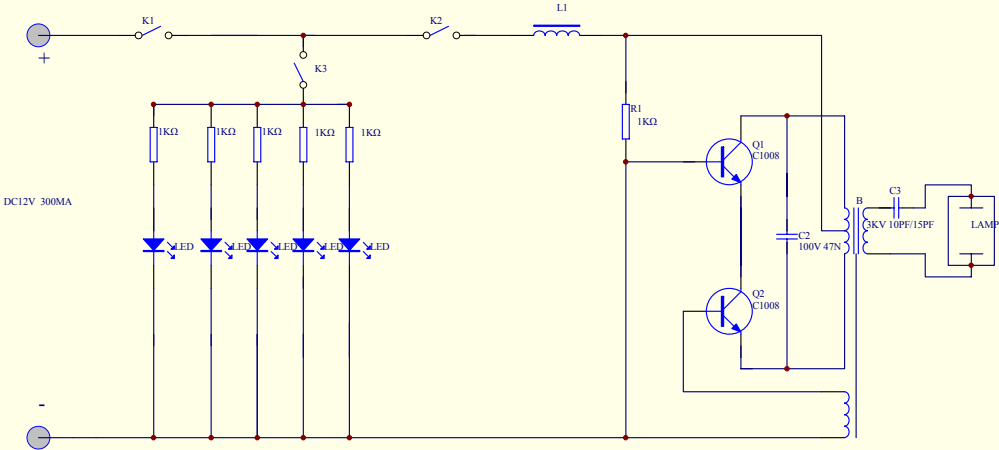


Circuit diagram for NL-1201,NL-1202,NL-1203,NL-1204



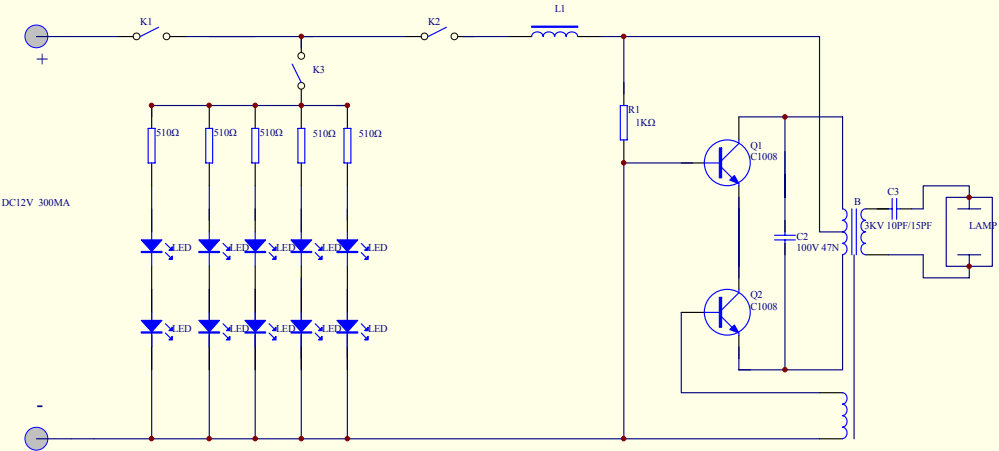
| | | |
|-----------|---|-----------|
| Title | | |
| Size B | Number | Revision |
| Date: | 18-Jul-2012 | Sheet of |
| File: | C:\Documents and Settings\Administrator\Private\Bdb | Divide 10 |

Circuit diagram for NL-1205,NL-1206,NL-1207



| Title | | |
|-------|--|----------|
| Size | Number | Revision |
| B | | |
| Date | 18-Jul-2012 | Sheet of |
| File | C:\Documents and Settings\Administrator\Documents\NL-1205, 公主井.ddb | |

Circuit diagram for NL-1208



| Title | | |
|--|----------|----------|
| Size B | Number | Revision |
| Date: 18-Jul-2012 | Sheet of | |
| File: C:\Documents and Settings\Administrator\Documents\Bw6 资料\灯.dft | | |