

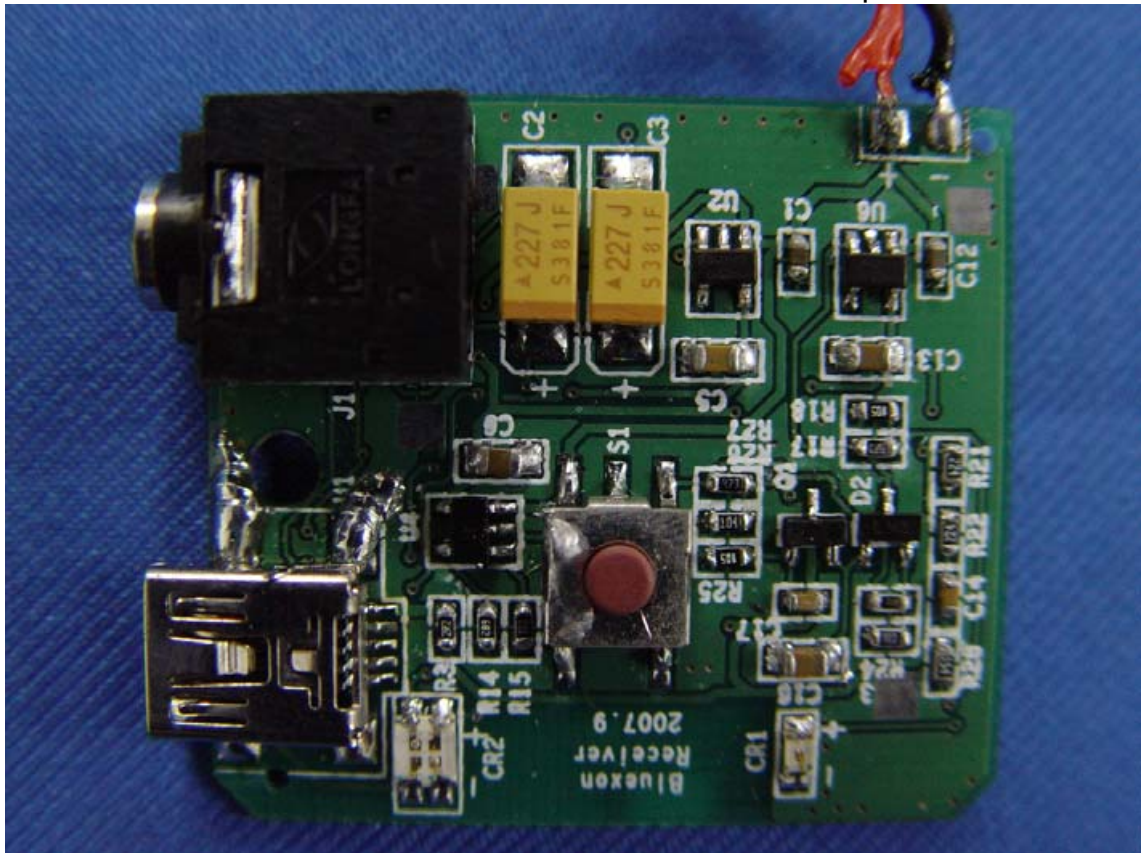
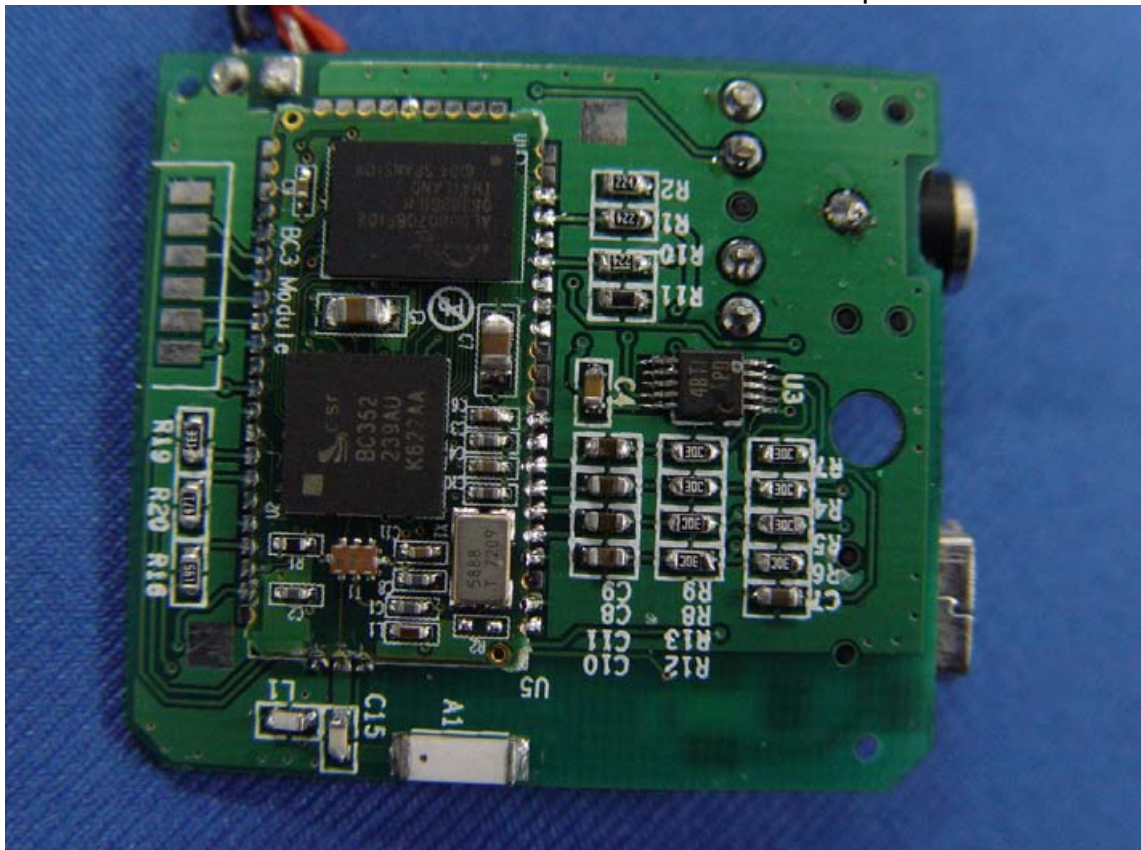
Figure 5  
Inside of the EUT



Figure 6  
Inside of the EUT





Figure 7  
Component Side of the PCBFigure 8  
Component Side of the PCB

**Kitec** AD ADAPTOR  
 MODEL: K3A/PDS000770U1US  
 INPUT: 100-240V ~ 50/60Hz 0.15A  
 OUTPUT: 5.0V  $\pm$  0.7A

For I.T.E use only

  MADE IN CHINA



Figure 11  
Adaptor of the EUT



Figure 12  
USB Cable

