



Excellence in Compliance Testing

Certification Exhibit

**FCC ID: ONTJETIDS16US
IC: 10491A-JETIDS16US**

**FCC Rule Part: 15.247
IC Radio Standards Specification: RSS-210**

ACS Project: 12-2162

**Manufacturer: Esprit Model
Model: JETIDS16US**

Internal Photos

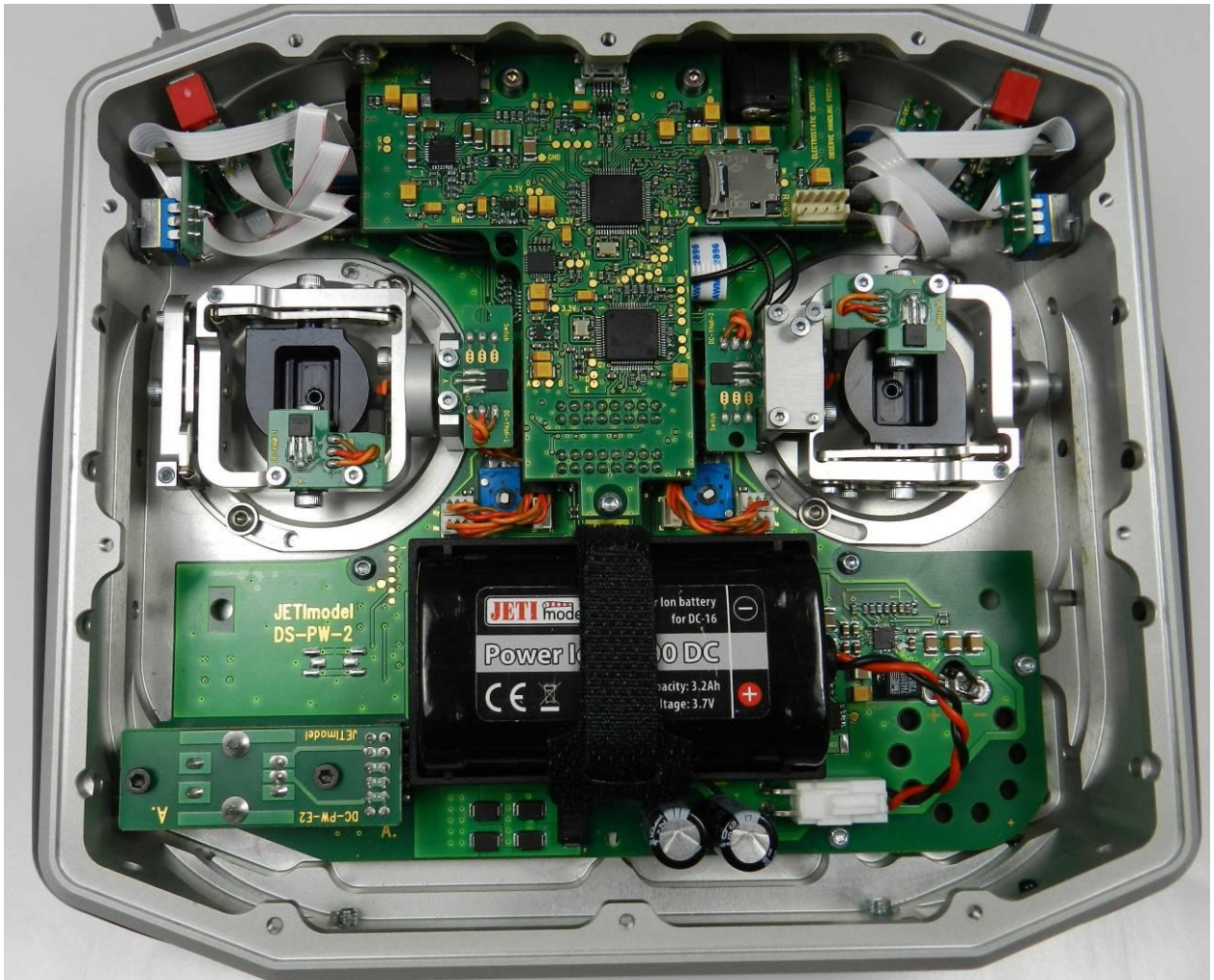


Figure 1: Internal View with back case removed

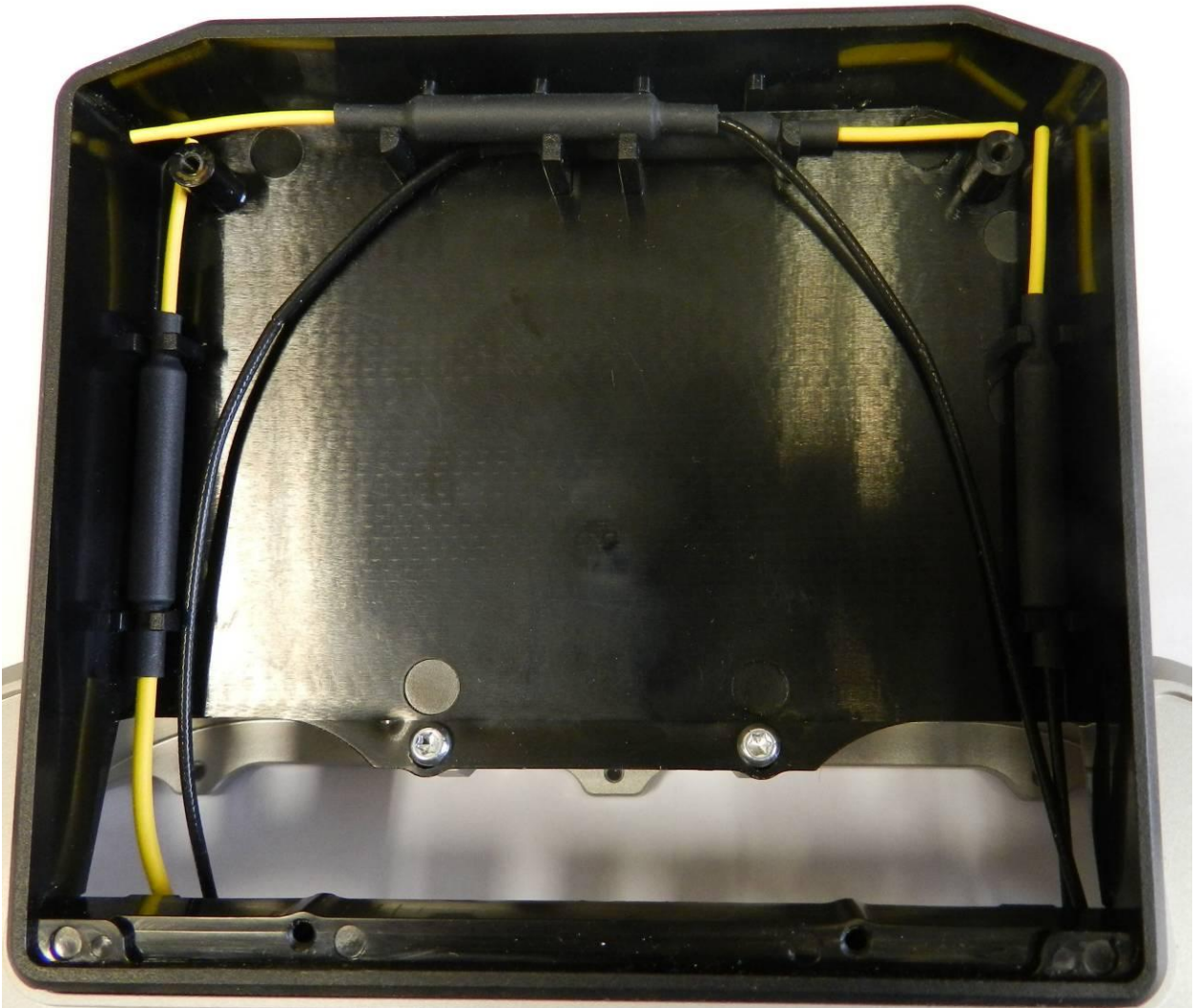


Figure 2: Antennas Internal View Inside of Display Mold

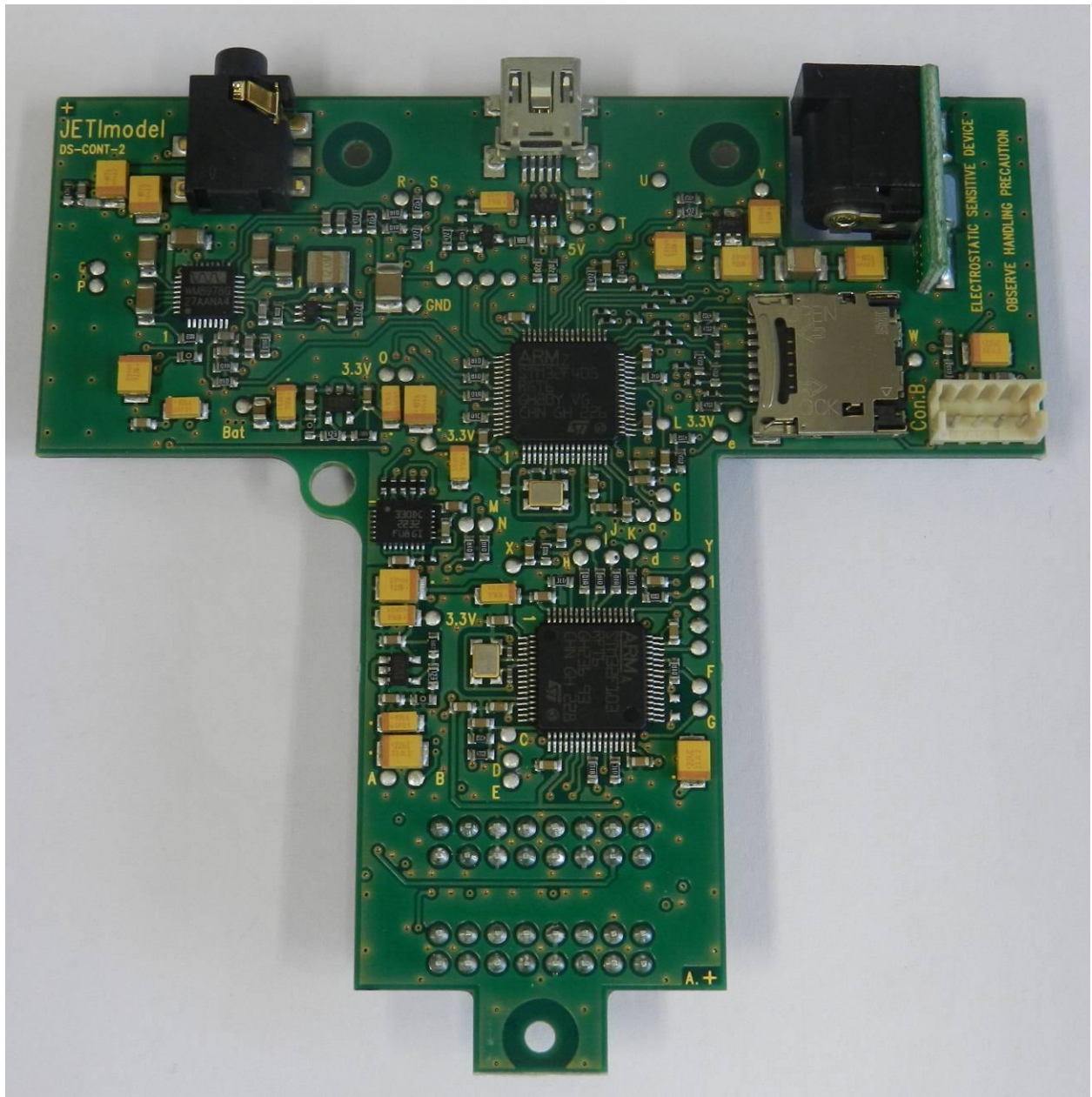


Figure 3: DS-Cont-2 Board Top



Figure 4: DS-CONT-2 Board Bottom (with Shield)

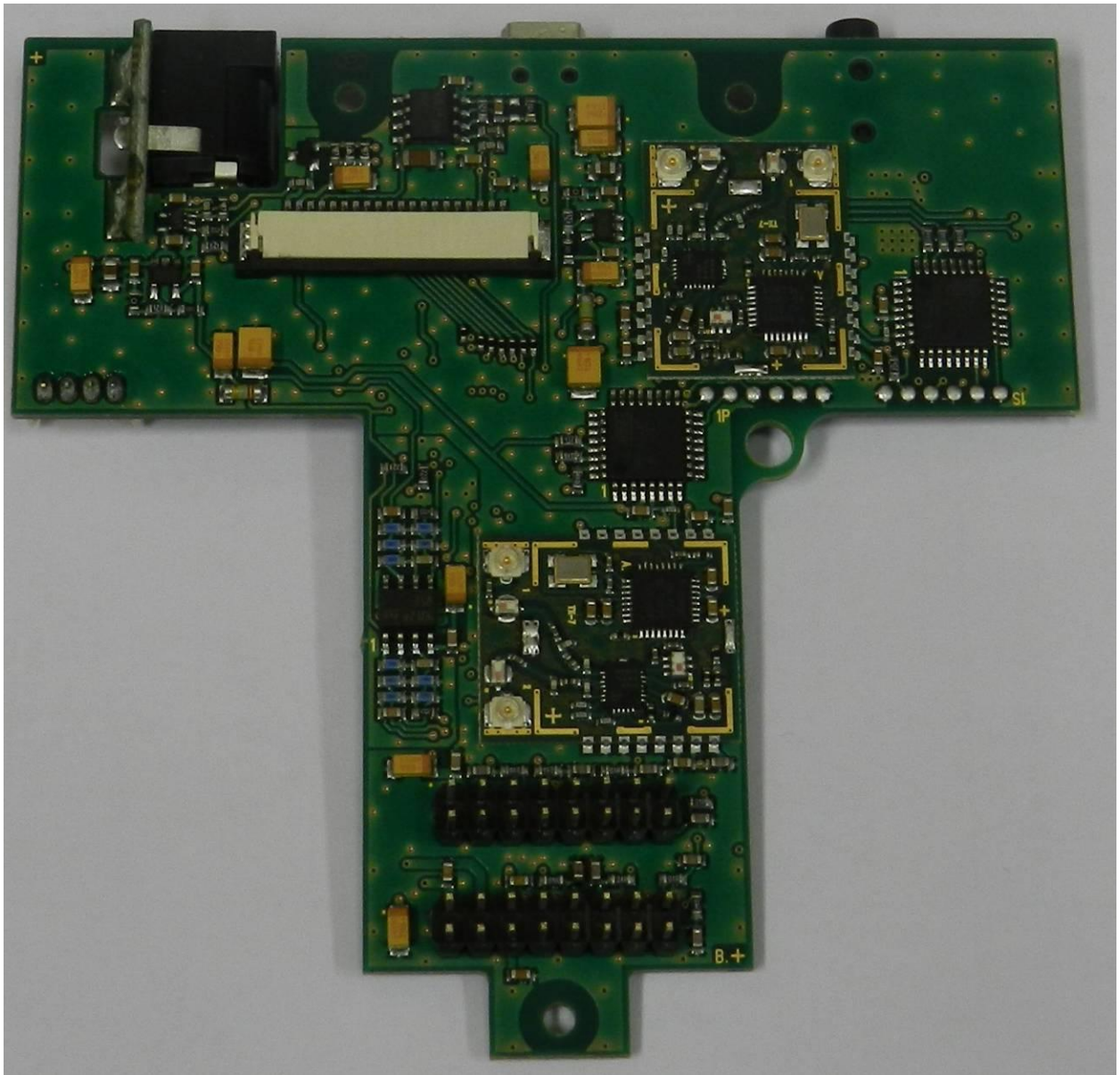


Figure 5: DS-CONT-2 Board Bottom (without Shield)

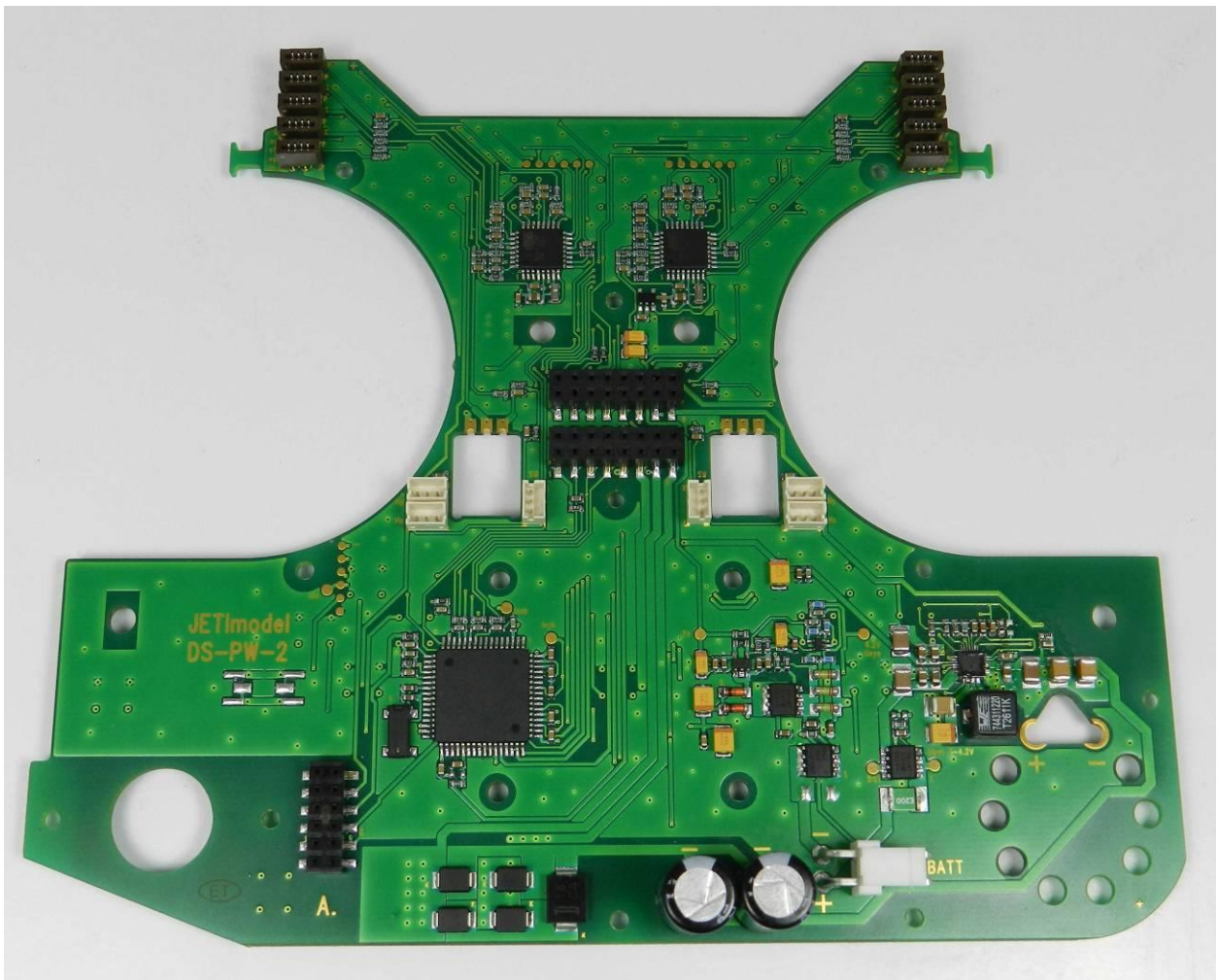


Figure 6: DS-PW-2 Board Top

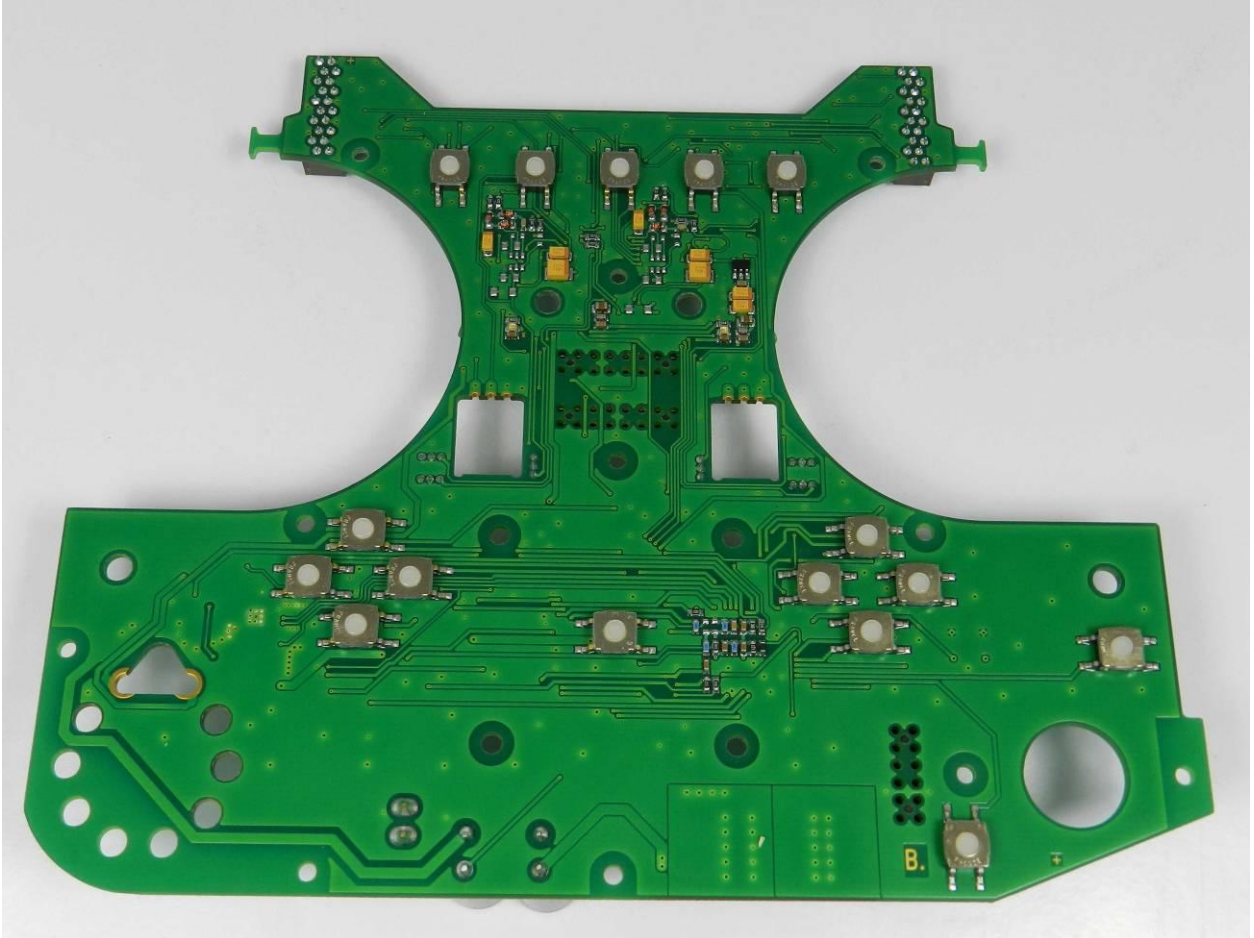


Figure 7: DS-PW-2 Board Bottom



Figure 8: DS-SWS-2 Board Top



Figure 9: DS-SWS-2 Board Bottom

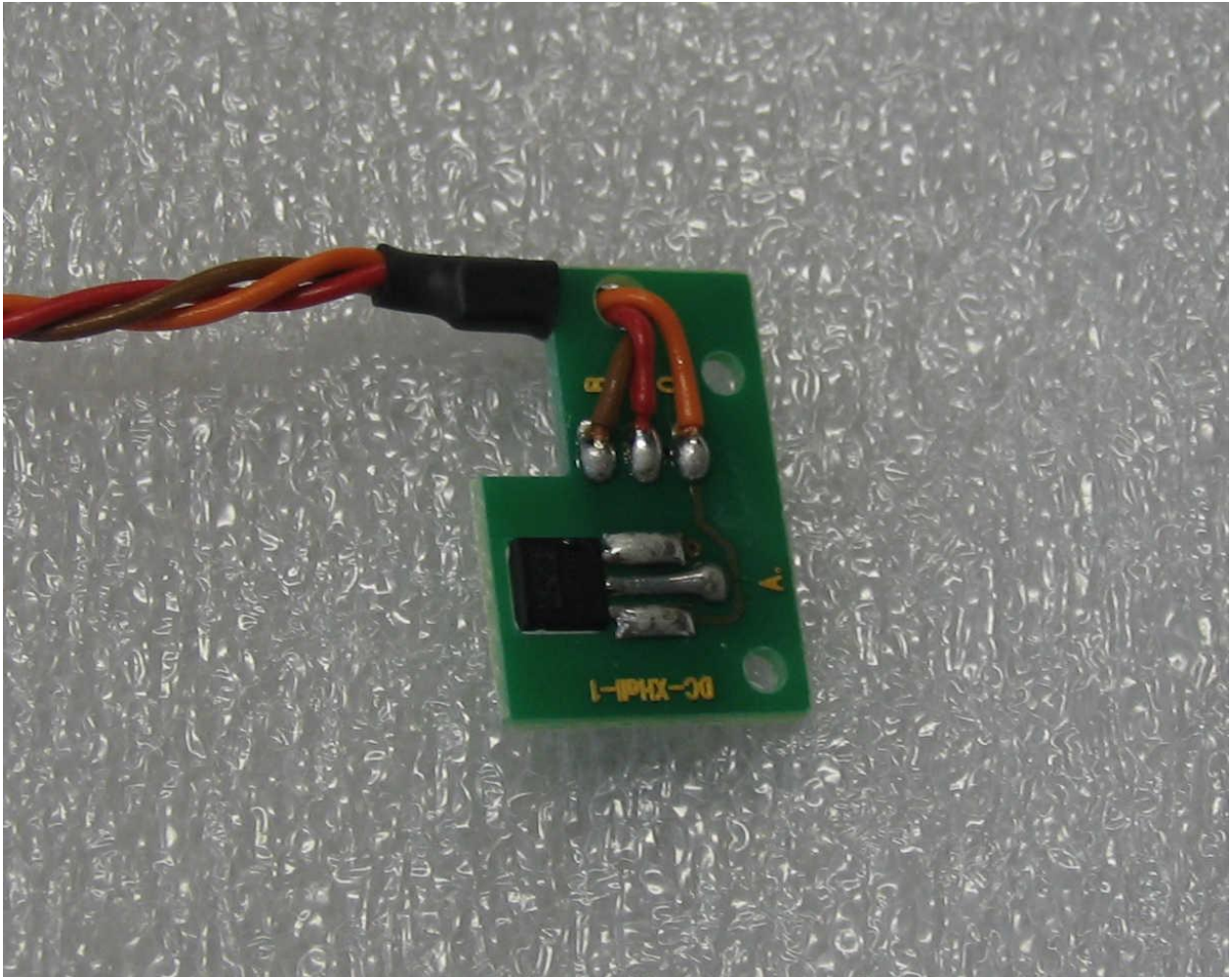


Figure 10: DS-XHall-1 Board Top

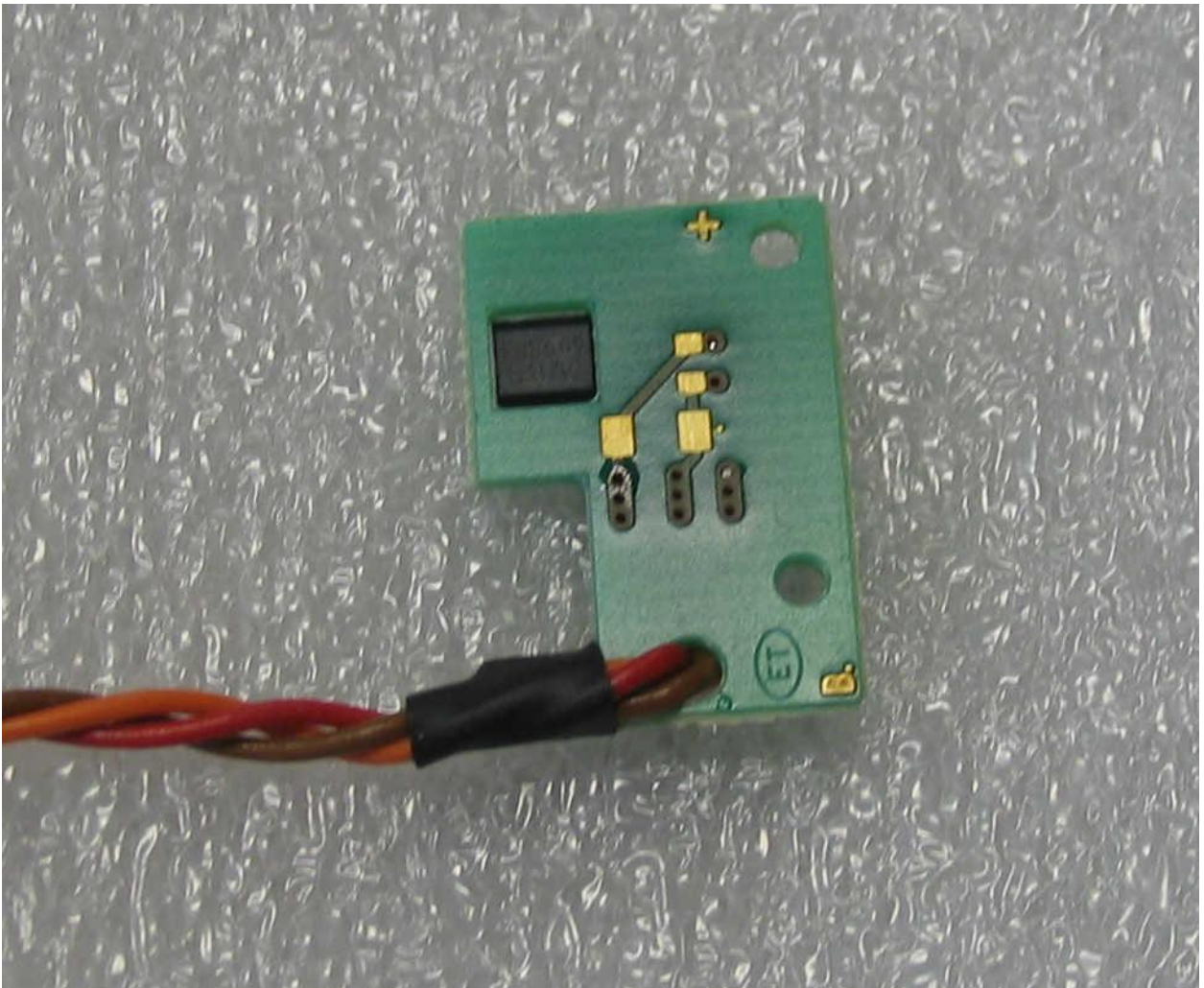


Figure 11: DS-XHall-1 Board Bottom

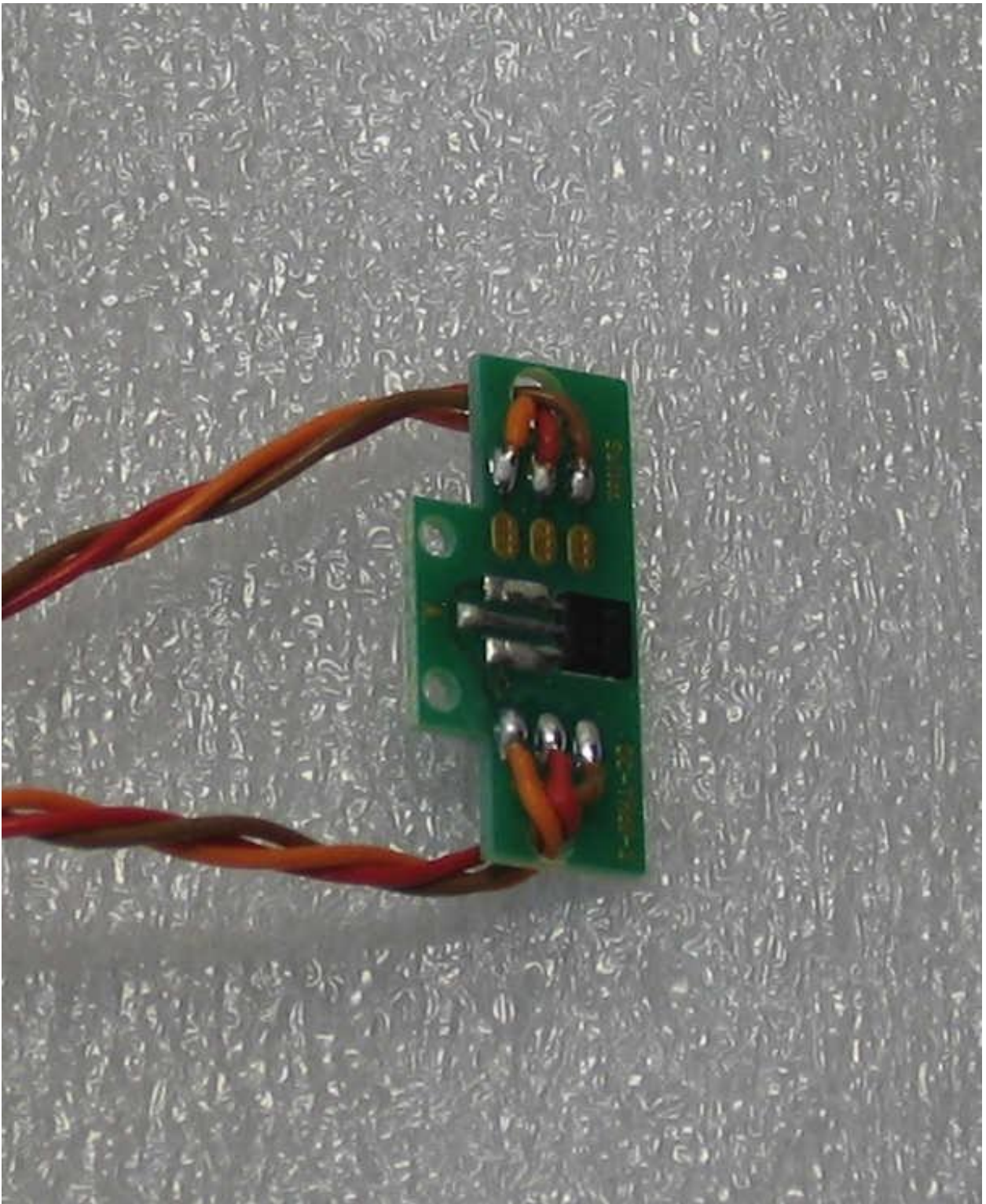


Figure 12: DS-YHall-2 Board Top

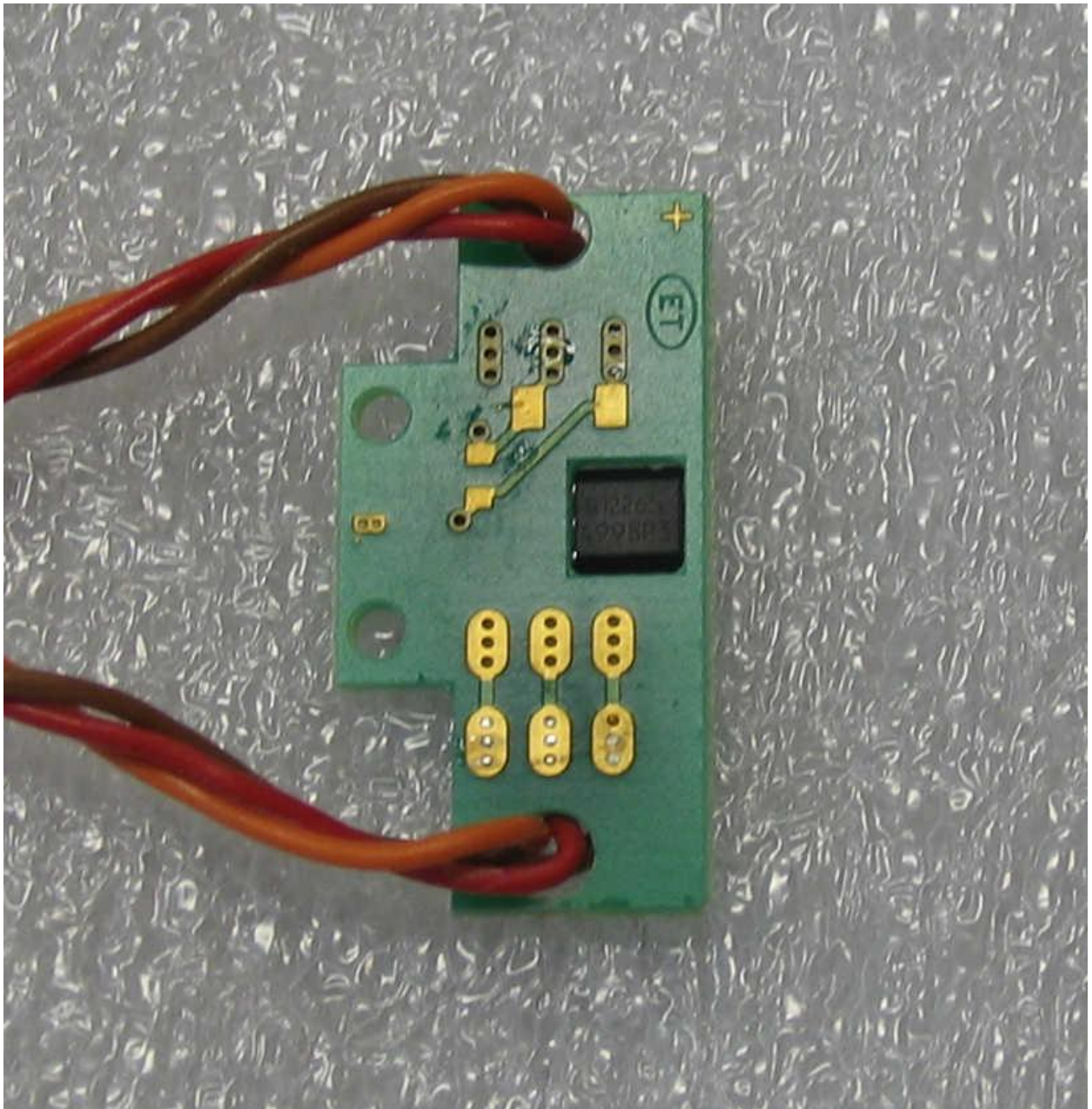


Figure 13: DS-YHall-2 Board Bottom

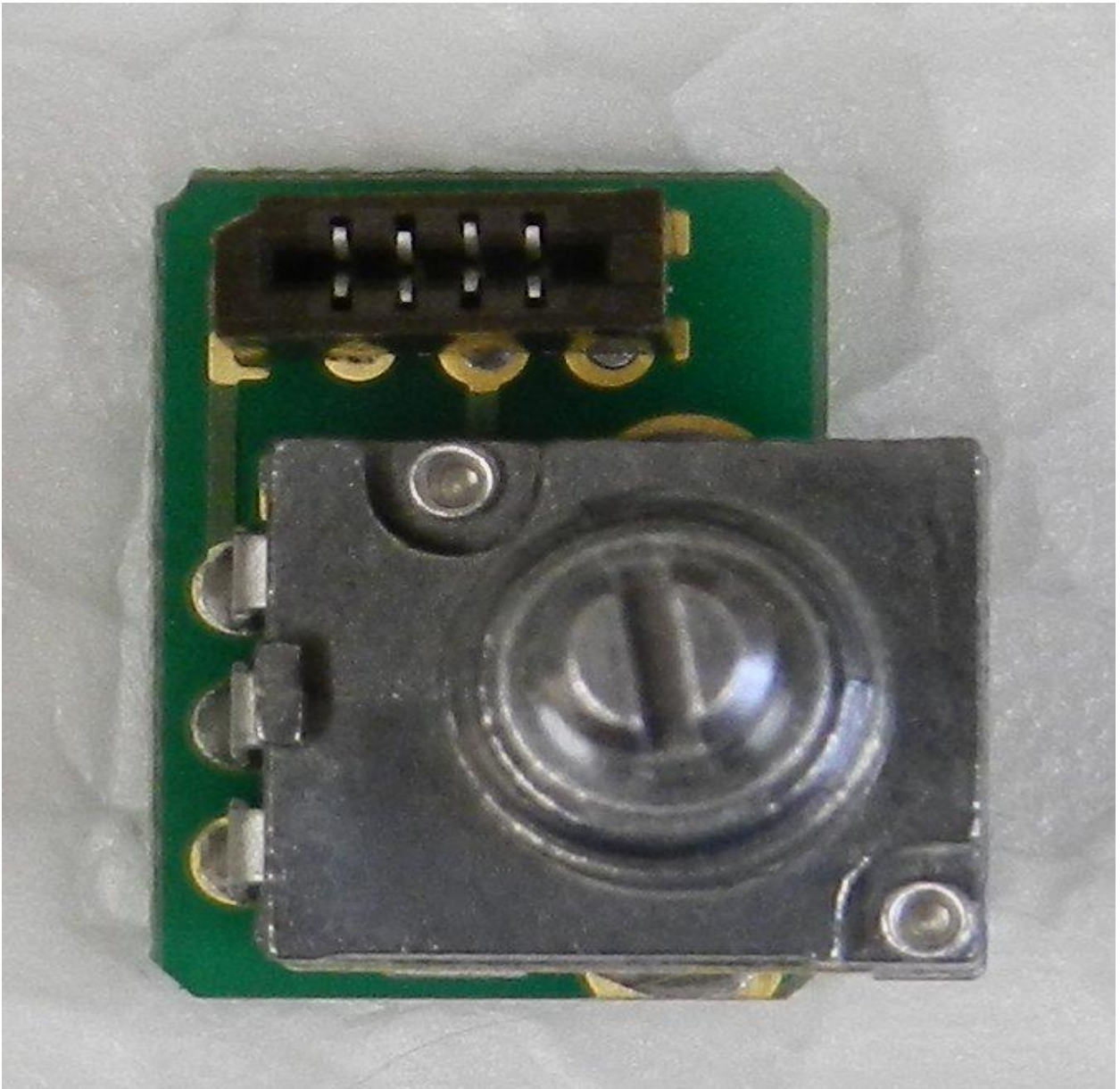


Figure 14: DS-SWP-2 Board Top

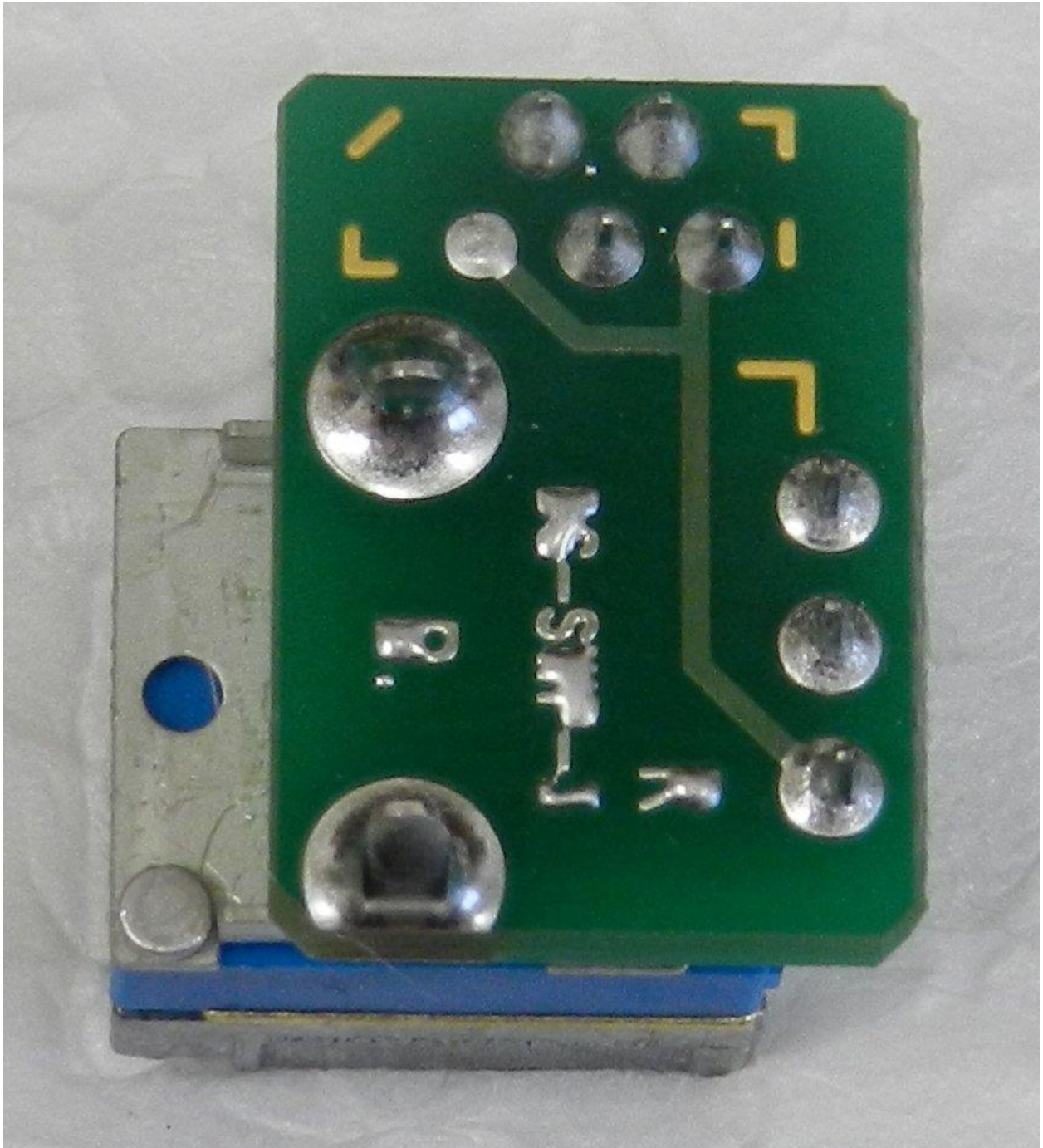


Figure 15: DS-SWP-2 Board Bottom

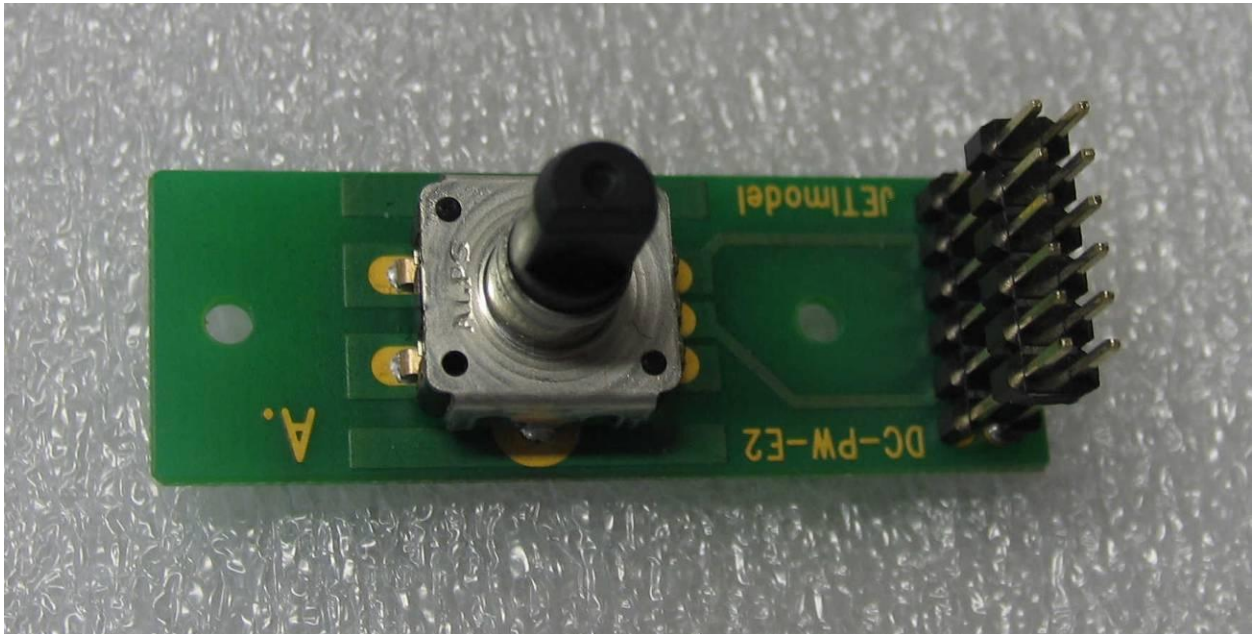


Figure 16: DC-PW-E2 Board Top

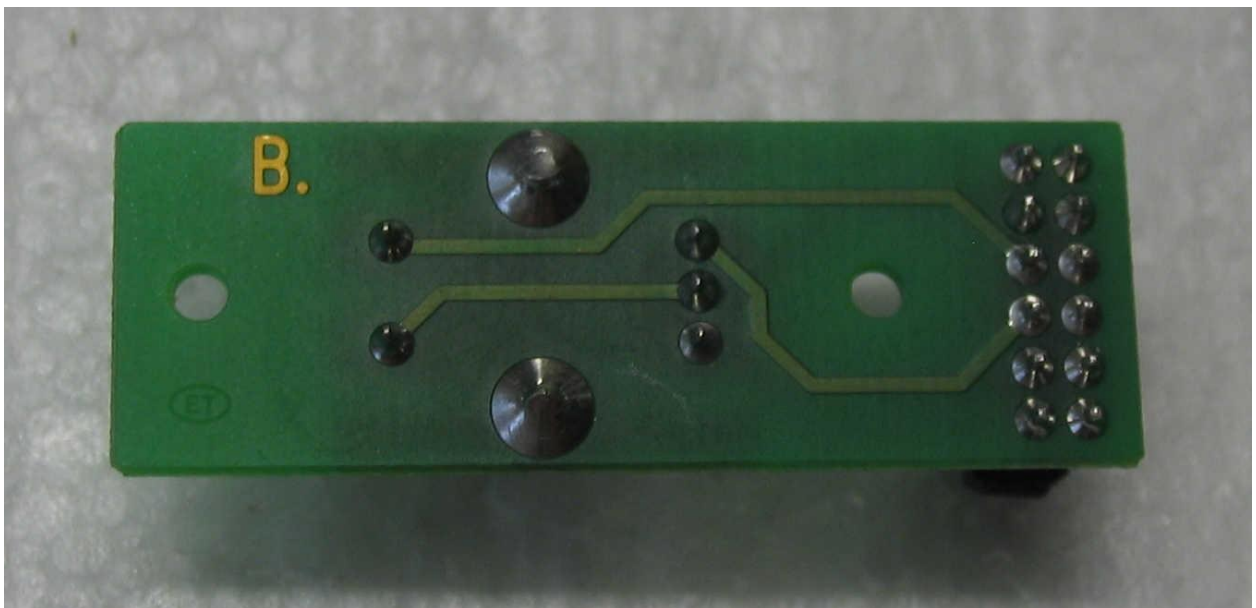


Figure 17: DC-PW-E2 Board Bottom

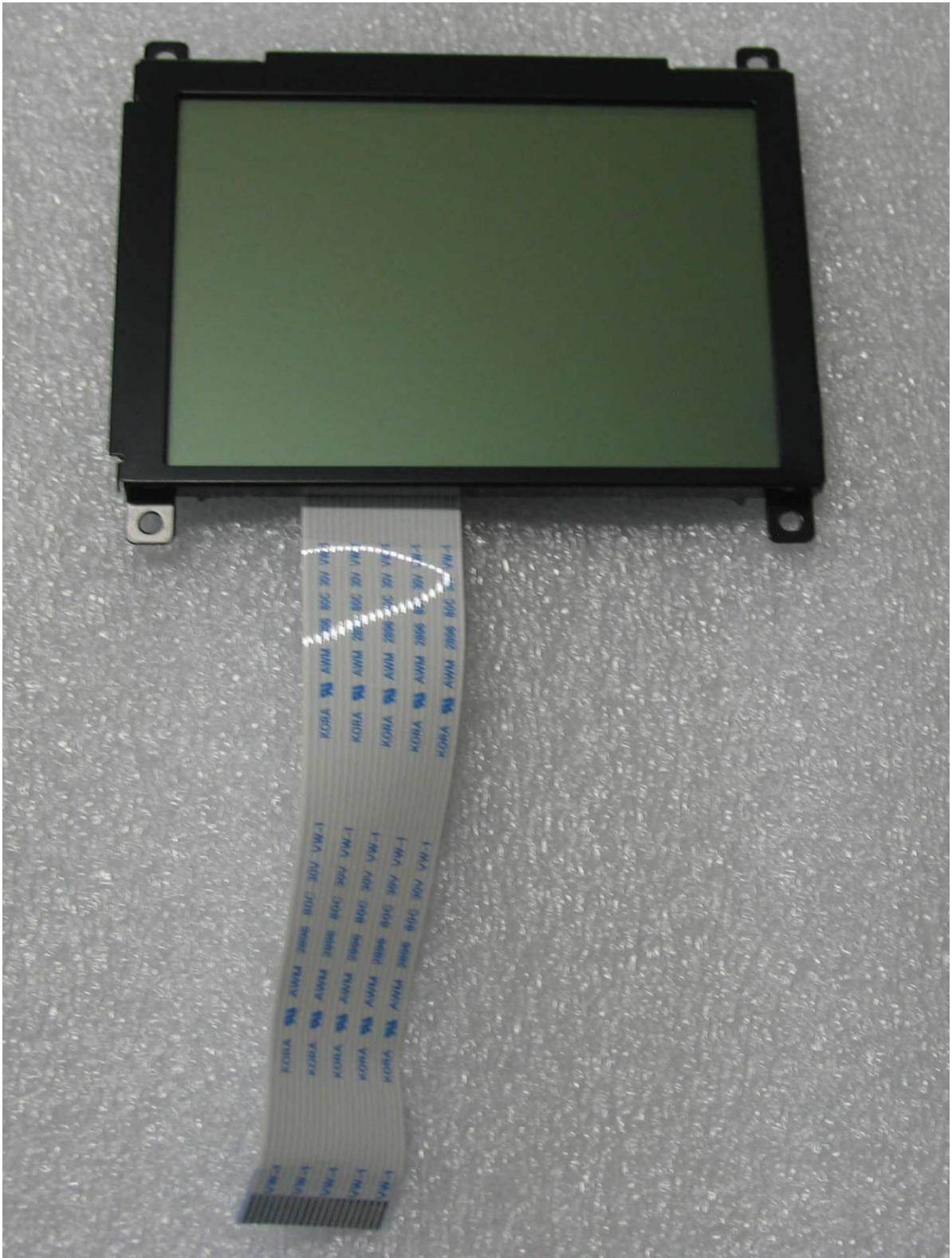


Figure 18: LCD Front



Figure 19: LCD Back