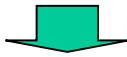


Multicast Data Reception Set-up

In order to enjoy multicast service, the only thing you need to do is connecting your DTR5000N to the network or to your PC. (See Fig. 2) in previous section.

Select Data Channel



Run Multicast Application

- By using remote controller, select either a data channel (if you want to connect with only one data channel) or any TV or Radio channel (if you want multiple of data service) of a transponder. Here if you select a TV or Radio channel of a transponder having several data channels, you can simultaneously run several Multicast data.
- The data channel information can be found in the package given by the ISP that you subscribe to.
- Run Multicast programs such as Mediaplayer, NetShow, or Streamworks.

Unicast Data Reception Set-up

In order to enjoy the unicast service, your computer should be connected to DTR5000N either via network (Fig.2, 3) or via Ethernet cable (Fig. 4).

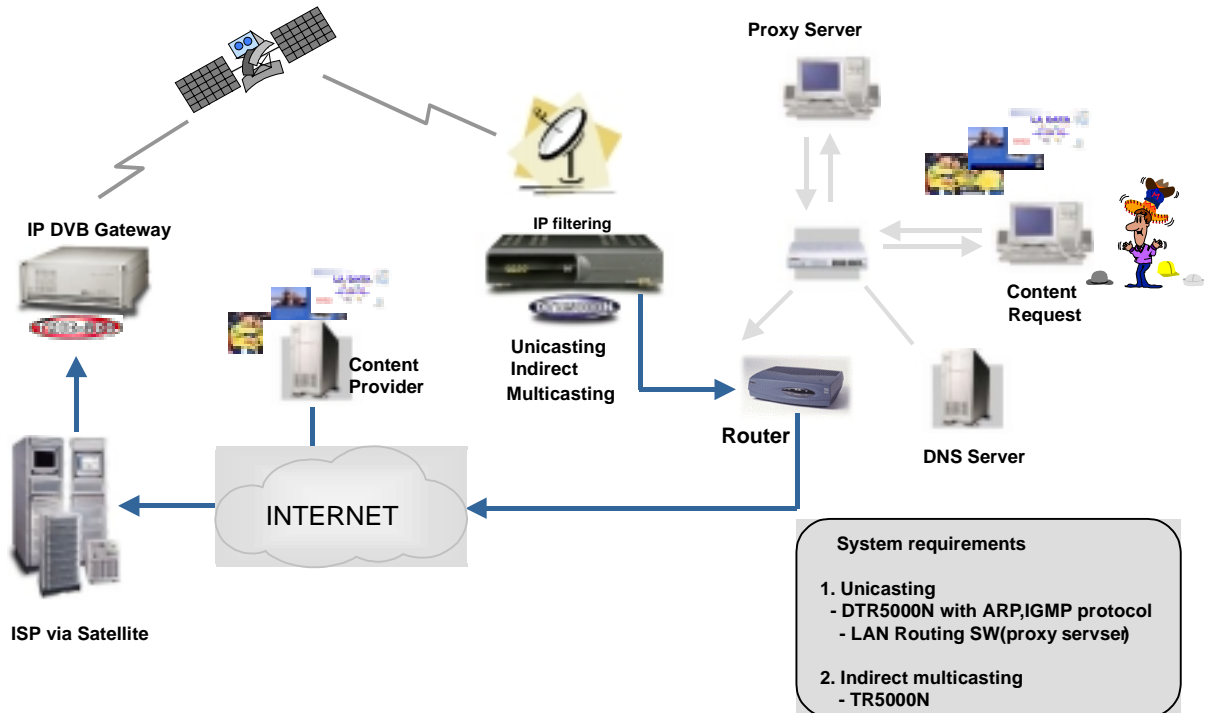


Fig 3. Data flow and routing for single IP address with indirect connection

