

The Network configuration is almost the same as the direct multicasting except that the DTR5000N is connected to the router instead of the hub. So, IP Multicasting data passes the DTR5000N and is filtered at the router. Other data flows are the same as that of direct connection to hub.

Data flow & Routing with dial-up modem (PPP)

To support this function, you need DTR5000N with TCP/IP protocol and PC software to notify the IP address of the PC to the DTR5000N.

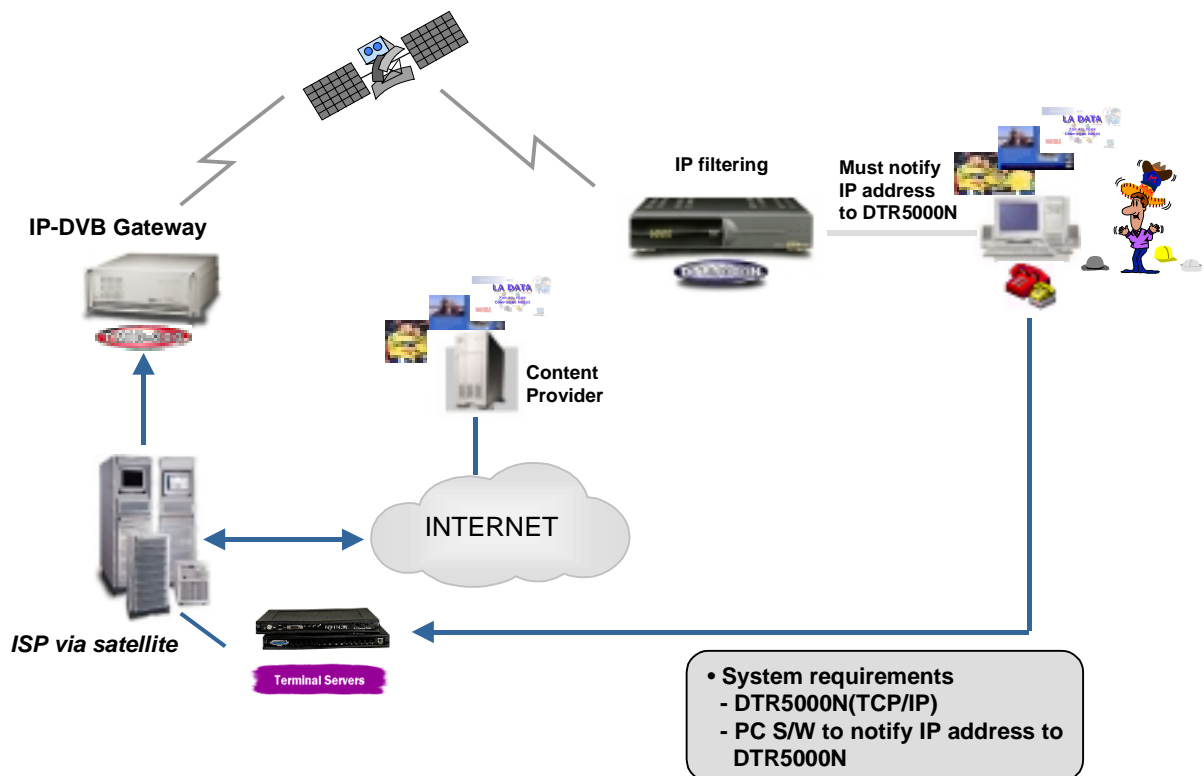


Fig 4. Data flow and routing for dial-up modem

When user calls the ISP with PSTN line, the IP is assigned to the PC. Then the PC software automatically notifies its IP address to the DTR5000N. Now, the requested Internet data of the PC user comes to the DTR5000N via satellite.

