

How to use DTR5000N in the Satellite Network

Here are four typical examples of DTR5000N usage. The first one is the case that DTR5000N is directly connected to the Hub. The second one is that the DTR5000N is connected to the Router. The third case is PPP connection with dial-up modem.

Data flow & Routing with single subscriber IP address

Direct Multicasting and Unicasting

Here, the DTR5000N is directly connected to the hub. One IP address is assigned to the whole group from ISP. User sends data request information through the LAN and receives the data via Satellite. There can be two modes of data reception : Unicast and Multicast.

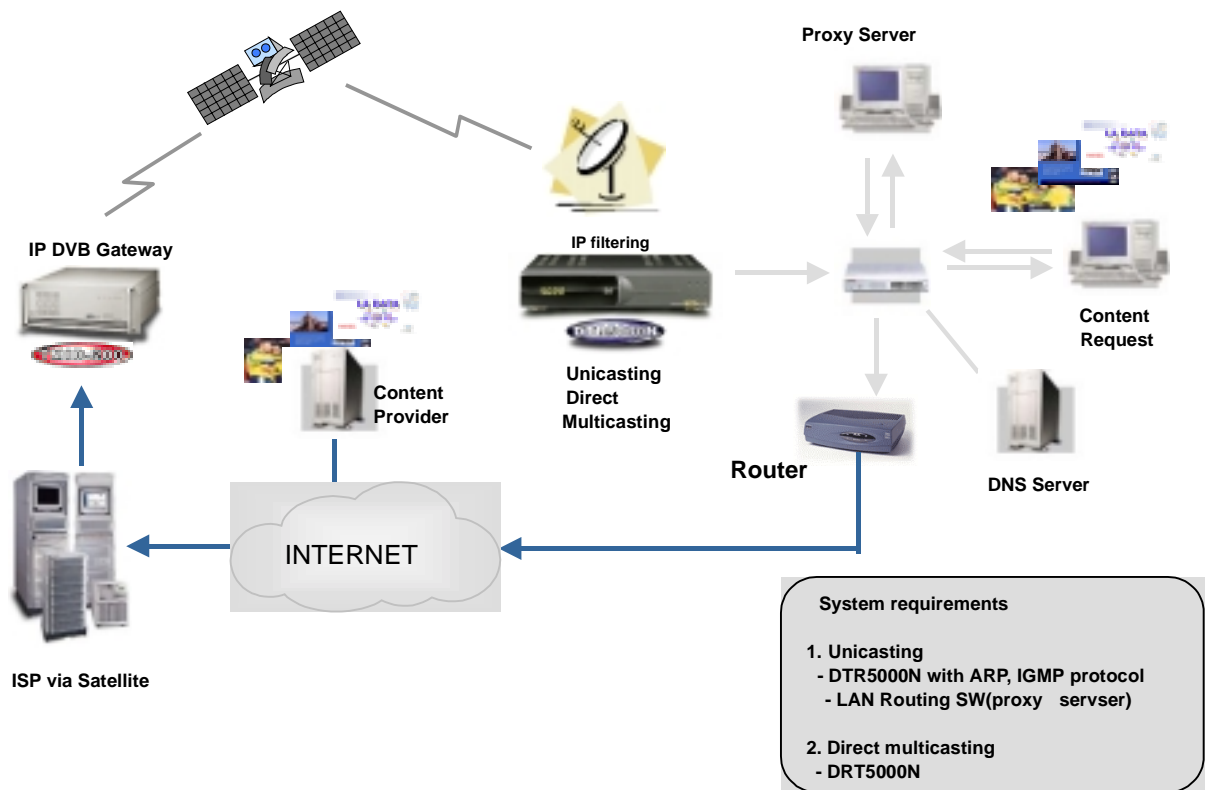


Fig 2. Data flow and routing for single IP address with direct connection