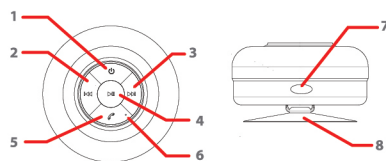


Location of controls

Top View

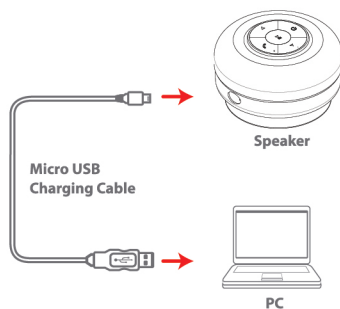
Side View



1. [] **button** - Power ON & OFF / Indicator light
2. [] **button** - Quick press = Previous song
Press & Hold = Volume down
3. [] **button** - Quick press = Next song
Press & Hold = Volume up
4. [] **button** - Play / Pause music
5. [] **button** - Answer / End call
6. **Microphone**
7. **DC:5V charging socket** (under the rubber cover)
8. **Suction cup**

Charging the Bluetooth Speaker

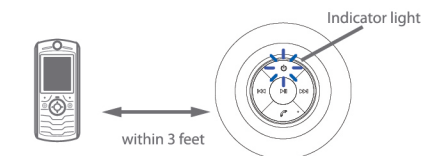
1. Pull open the rubber cover on the side of the speaker.
2. Connect the small end of the Micro USB charging cable into the **5V:DC** charging socket on the side of the speaker.
3. Connect the other end of the USB cable to your computer's USB port.
4. The **RED** indicator light is illuminated.
5. The **RED** indicator light shuts off when the speaker is fully charged. (Approximately 4 hours)
6. Be sure to close the rubber cover on the side of the speaker (especially when coming into contact with water).



i Make sure you charge your speaker for **6 hours** before using it for the first time. You can use the Bluetooth Speaker while charging.

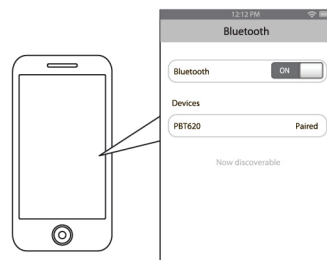
Pairing the speaker with a Bluetooth enabled device

1. Turn OFF the Bluetooth Speaker by pressing and holding the [] **button** until you hear a single beep, and the indicator light shuts off.
2. Press and hold the [] **button** until the BLUE indicator light on the front of the speaker flashes quickly. A series of tones will sound.
3. Keep your Bluetooth Speaker and Bluetooth enabled device within 3 feet of each other during the pairing process.
4. Set your mobile phone or other Bluetooth enabled device to search for Bluetooth devices.



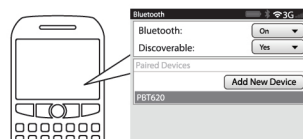
On an iPhone

- Go to **SETTINGS > BLUETOOTH**
(Make sure Bluetooth is turned ON)



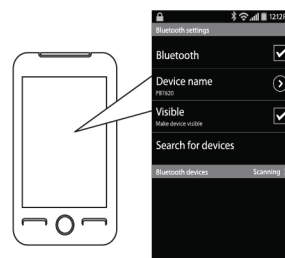
On a Blackberry

- Go to **SETTINGS/OPTIONS > BLUETOOTH**
- Enable **BLUETOOTH** (Make sure Bluetooth is turned ON)



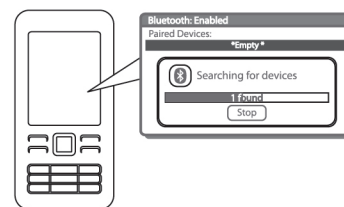
On an Android Phone

- Go to **SETTINGS > BLUETOOTH > MENU > Search for devices**
(Make sure Bluetooth is turned ON)



On other Cell Phones/Devices

- Review the instruction manual that came with your phone/device.



5. When the Bluetooth enabled device finds the speaker, select "PBT620" from the list of found devices.
6. If required, enter the password 0000. Select OK or Yes to pair the two units.
7. After a successful pairing, you can hear the voice "The bluetooth device is connected successfully", and the LED indicator light will blink BLUE slowly.

i The screenshots above are typical of many Bluetooth enabled devices in the market today, and are used to assist in the explanation of the pairing process. Your Bluetooth enabled device's interface and interaction with the **Bluetooth Speaker** may slightly differ from the illustrations above.

Using your Bluetooth Speaker

Powering ON / OFF

- To turn ON, press and hold the [] **button** until you hear a series of tones, and the indicator light flashes BLUE.
- To turn OFF, press and hold the [] **button** until you hear a tone, and the indicator light shuts off.

Answering / Ending a call

- To answer a call, press the [] **button**
- To end a call, press the [] **button**

Adjusting the Volume

- Press and hold the [] or [] **button** to adjust the volume to the desired level.

i NOTE: You may also adjust the volume from your Bluetooth device's volume control.

To make a call

- Dial the number and press the SEND button on your mobile phone, the call is automatically transferred to the speaker.



Redialing the last number called

- Quickpress the [] **button** twice. The last number called will be redialed.

Playing Music

To enjoy wireless music on your Bluetooth Speaker, make sure you are connected to a Bluetooth enabled device. Once connected you can press **PLAY** on your Bluetooth device or you can push in the [] **button** on the PBT620 Bluetooth Speaker. Once playback has begun, you can control the music from the control buttons of the Bluetooth speaker.

Adjusting the volume

- Press and hold the [] or [] **button** to adjust the volume to the desired level. When maximum or minimum volume is reached you will hear a beep.

i You may also adjust the volume from your mobile phone's volume control.

Play/Pause*

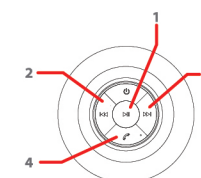
Press the [] **button** to pause the music. To resume the music, press the [] **button** again.

Skipping Songs*

(With devices that have AVRCP Bluetooth profile)

Press the [] **button** to go to the next song.

Press the [] **button** to go to the previous song



Music controls

1. [] **button** - Play / Pause music
2. [] **button** - Quick press = Previous song
Press & Hold = Volume down
3. [] **button** - Quick press = Next song
Press & Hold = Volume up
4. [] **button** - Answer / End call

i You may answer & end calls while listening to music. The music will stop when a call is answered, and will restart when the call is ended.

*The Bluetooth Speaker is compatible with any brand of Bluetooth-enabled phone or music device that supports Advanced Audio Distribution Profile (A2DP) and Audio Video Remote Control Profile (AVRCP).

In order for Bluetooth devices to communicate with one another properly, they must utilize the same Bluetooth profile. To determine the profiles supported by your device (mobile phone, gaming console, computer or mp3 player), please refer to the device's user guide.

Certain Bluetooth features including those listed may not be supported by all compatible Bluetooth-enabled devices, and/or the functionality of such features may be limited in certain devices.

FCC Caution:

Any Changes or modifications not expressly approved by the party responsible for compliance could void the user's authority to operate the equipment.

This device complies with part 15 of the FCC Rules. Operation is subject to the following two conditions: (1) This device may not cause harmful interference, and (2) this device must accept any interference received, including interference that may cause undesired operation.

Note: This equipment has been tested and found to comply with the limits for a Class B digital device, pursuant to part 15 of the FCC Rules. These limits are designed to provide reasonable protection against harmful interference in a residential installation. This equipment generates, uses and can radiate radio frequency energy and, if not installed and used in accordance with the instructions, may cause harmful interference to radio communications. However, there is no guarantee that interference will not occur in a particular installation. If this equipment does cause harmful interference to radio or television reception, which can be determined by turning the equipment off and on, the user is encouraged to try to correct the interference by one or more of the following measures:

- Reorient or relocate the receiving antenna.
- Increase the separation between the equipment and receiver.
- Connect the equipment into an outlet on a circuit different from that to which the receiver is connected.
- Consult the dealer or an experienced radio/TV technician for help.

FCC Radiation Exposure Statement:

This equipment complies with FCC radiation exposure limits set forth for an uncontrolled environment. This equipment should be installed and operated with minimum distance 20cm between the radiator & your body.

This transmitter must not be co-located or operating in conjunction with any other antenna or transmitter.