

Annex E – SAR Plots

2450MHz Band

Measurement Report for LWR-1050, BACK, WLAN 2.4GHz, 802.11b, Channel 1 (2412.000MHz)

Device under Test Properties

Model, Manufacturer	Dimensions [mm]	DUT Type
LWR-1050, Listen Technologies	95.7 x 50.0 x 15.9	Wi-Fi Audio Receiver

Exposure Conditions

Phantom Section, TSL	Position, Test Distance [mm]	Band	Frequency [MHz], Channel Number	Conversion Factor	TSL Conductivity [S/m]	TSL Permittivity
Flat, HSL	BACK, 0.00	WLAN 2.4GHz	2412.000, 1	6.85	1.69	36.3

Hardware Setup

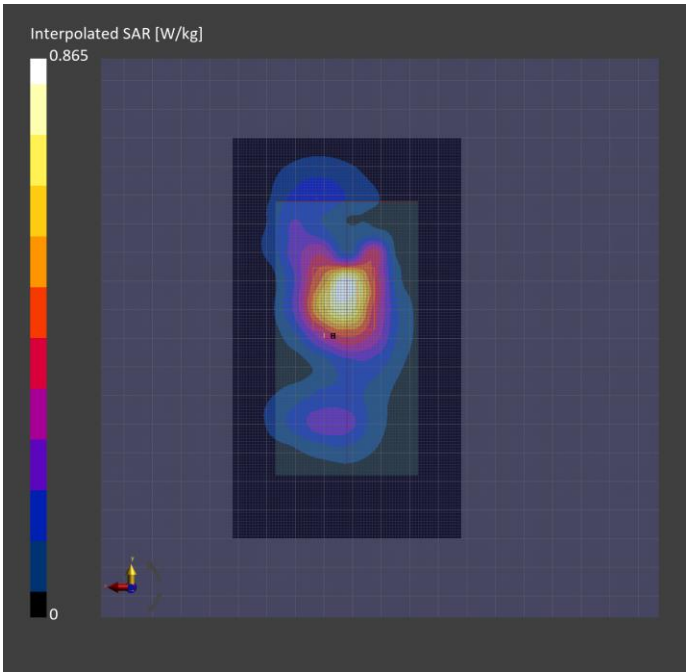
Phantom	TSL, Measured Date	Probe, Calibration Date	DAE, Calibration Date
ELI V8.0 (20deg probe tilt) - 2191	HBBL-600-10000 SLAAHU16BC221222-1, 2024-Jun-27	EX3DV4 - SN7783, 2024-04-12	DAE4 Sn1724, 2024-03-28

Scan Setup

	Area Scan	Zoom Scan
Grid Extents [mm]	80.0 x 140.0	30.0 x 30.0 x 30.0
Grid Steps [mm]	10.0 x 10.0	5.0 x 5.0 x 1.5
Sensor Surface [mm]	3.0	1.4
Graded Grid	N/A	Yes
Grading Ratio	N/A	1.5
MAIA	N/A	N/A
Surface Detection	All points	VMS + 6p
Scan Method	Measured	Measured

Measurement Results

	Area Scan	Zoom Scan
Date	2024-06-27, 17:36	2024-06-27, 18:03
psSAR1g [W/kg]	0.663	0.719
psSAR10g [W/kg]	0.318	0.333
Power Drift [dB]	-0.04	-0.04
Power Scaling	Disabled	Disabled
Scaling Factor [dB]		
TSL Correction	Positive	Positive
M2/M1 [%]		75.9
Dist 3dB Peak [mm]		9.0



Measurement Report for LWR-1050, BACK, WLAN 2.4GHz, 802.11b, Channel 7 (2442.000MHz)

Device under Test Properties

Model, Manufacturer	Dimensions [mm]	DUT Type
LWR-1050, Listen Technologies	95.7 x 50.0 x 15.9	Wi-Fi Audio Receiver

Exposure Conditions

Phantom Section, TSL	Position, Test Distance [mm]	Band	Frequency [MHz], Channel Number	Conversion Factor	TSL Conductivity [S/m]	TSL Permittivity
Flat, HSL	BACK, 0.00	WLAN 2.4GHz	2442.000, 7	6.85	1.84	37.5

Hardware Setup

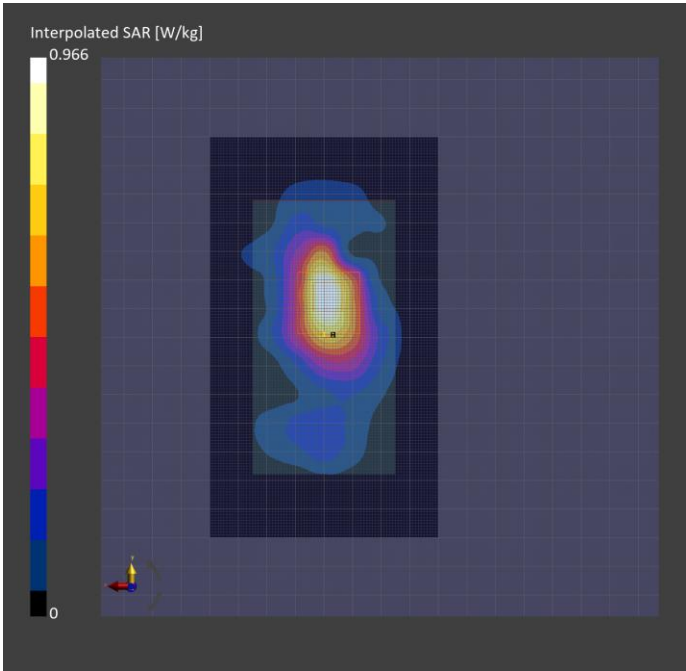
Phantom	TSL, Measured Date	Probe, Calibration Date	DAE, Calibration Date
ELI V8.0 (20deg probe tilt) - 2191	HBBL-600-10000 SLAAHU16BC221222-1, 2024-Jun-26	EX3DV4 - SN7783, 2024-04-12	DAE4 Sn1724, 2024-03-28

Scan Setup

	Area Scan	Zoom Scan
Grid Extents [mm]	80.0 x 140.0	30.0 x 30.0 x 30.0
Grid Steps [mm]	10.0 x 10.0	5.0 x 5.0 x 1.5
Sensor Surface [mm]	3.0	1.4
Graded Grid	N/A	Yes
Grading Ratio	N/A	1.5
MAIA	N/A	N/A
Surface Detection	VMS + 6p	All points
Scan Method	Measured	Measured

Measurement Results

	Area Scan	Zoom Scan
Date	2024-06-26, 21:18	2024-06-26, 22:05
psSAR1g [W/kg]	0.746	0.632
psSAR10g [W/kg]	0.367	0.309
Power Drift [dB]	0.02	-0.03
Power Scaling	Disabled	Disabled
Scaling Factor [dB]		
TSL Correction	Positive	Positive
M2/M1 [%]		62.5
Dist 3dB Peak [mm]		5.7



Measurement Report for LWR-1050, FRONT, WLAN 2.4GHz, 802.11b, Channel 1 (2412.000MHz)

Device under Test Properties

Model, Manufacturer	Dimensions [mm]	DUT Type
LWR-1050, Listen Technologies	95.7 x 50.0 x 15.9	Wi-Fi Audio Receiver

Exposure Conditions

Phantom Section, TSL	Position, Test Distance [mm]	Band	Frequency [MHz], Channel Number	Conversion Factor	TSL Conductivity [S/m]	TSL Permittivity
Flat, HSL	FRONT, 0.00	WLAN 2.4GHz	2412.000, 1	6.85	1.82	37.6

Hardware Setup

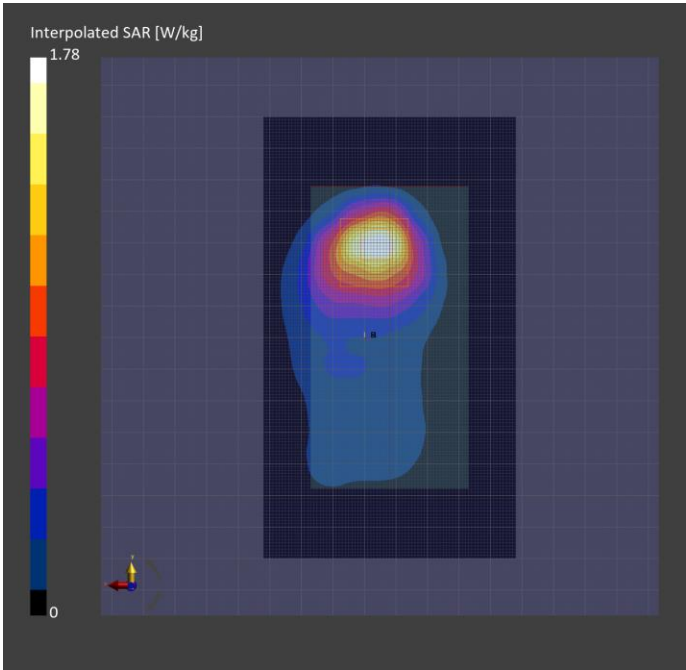
Phantom	TSL, Measured Date	Probe, Calibration Date	DAE, Calibration Date
ELI V8.0 (20deg probe tilt) - 2191	HBBL-600-10000 SLAAHU16BC221222-1, 2024-Jun-24	EX3DV4 - SN7783, 2024-04-12	DAE4 Sn1724, 2024-03-28

Scan Setup

	Area Scan	Zoom Scan
Grid Extents [mm]	80.0 x 140.0	30.0 x 30.0 x 30.0
Grid Steps [mm]	10.0 x 10.0	5.0 x 5.0 x 1.5
Sensor Surface [mm]	3.0	1.4
Graded Grid	N/A	Yes
Grading Ratio	N/A	1.5
MAIA	N/A	N/A
Surface Detection	All points	VMS + 6p
Scan Method	Measured	Measured

Measurement Results

	Area Scan	Zoom Scan
Date	2024-06-25, 15:13	2024-06-25, 15:43
psSAR1g [W/kg]	1.34	1.33
psSAR10g [W/kg]	0.644	0.597
Power Drift [dB]	-0.02	-0.01
Power Scaling	Disabled	Disabled
Scaling Factor [dB]		
TSL Correction	Positive	Positive
M2/M1 [%]		71.3
Dist 3dB Peak [mm]		7.7



Measurement Report for LWR-1050, FRONT, WLAN 2.4GHz, 802.11b, Channel 7 (2442.000MHz)

Device under Test Properties

Model, Manufacturer	Dimensions [mm]	DUT Type
LWR-1050, Listen Technologies	95.7 x 50.0 x 15.9	Wi-Fi Audio Receiver

Exposure Conditions

Phantom Section, TSL	Position, Test Distance [mm]	Band	Frequency [MHz], Channel Number	Conversion Factor	TSL Conductivity [S/m]	TSL Permittivity
Flat, HSL	FRONT, 0.00	WLAN 2.4GHz	2442.000, 7	6.85	1.84	37.5

Hardware Setup

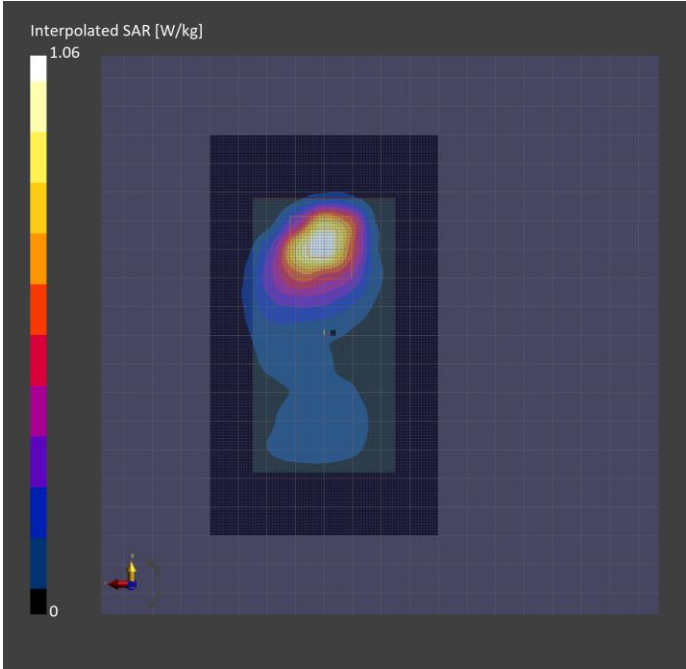
Phantom	TSL, Measured Date	Probe, Calibration Date	DAE, Calibration Date
ELI V8.0 (20deg probe tilt) - 2191	HBBL-600-10000 SLAAHU16BC221222-1, 2024-Jun-24	EX3DV4 - SN7783, 2024-04-12	DAE4 Sn1724, 2024-03-28

Scan Setup

	Area Scan	Zoom Scan
Grid Extents [mm]	80.0 x 140.0	30.0 x 30.0 x 30.0
Grid Steps [mm]	10.0 x 10.0	5.0 x 5.0 x 1.5
Sensor Surface [mm]	3.0	1.4
Graded Grid	N/A	Yes
Grading Ratio	N/A	1.5
MAIA	N/A	N/A
Surface Detection	VMS + 6p	VMS + 6p
Scan Method	Measured	Measured

Measurement Results

	Area Scan	Zoom Scan
Date	2024-06-24, 20:31	2024-06-24, 20:39
psSAR1g [W/kg]	0.804	0.854
psSAR10g [W/kg]	0.377	0.359
Power Drift [dB]	-0.02	-0.03
Power Scaling	Disabled	Disabled
Scaling Factor [dB]		
TSL Correction	Positive	Positive
M2/M1 [%]		72.7
Dist 3dB Peak [mm]		6.8



Measurement Report for LWR-1050, FRONT, WLAN 2.4GHz, 802.11b, Channel 11 (2462.000MHz)

Device under Test Properties

Model, Manufacturer	Dimensions [mm]	DUT Type
LWR-1050, Listen Technologies	95.7 x 50.0 x 15.9	Wi-Fi Audio Receiver

Exposure Conditions

Phantom Section, TSL	Position, Test Distance [mm]	Band	Frequency [MHz], Channel Number	Conversion Factor	TSL Conductivity [S/m]	TSL Permittivity
Flat, HSL	FRONT, 0.00	WLAN 2.4GHz	2462.000, 11	6.85	1.86	37.5

Hardware Setup

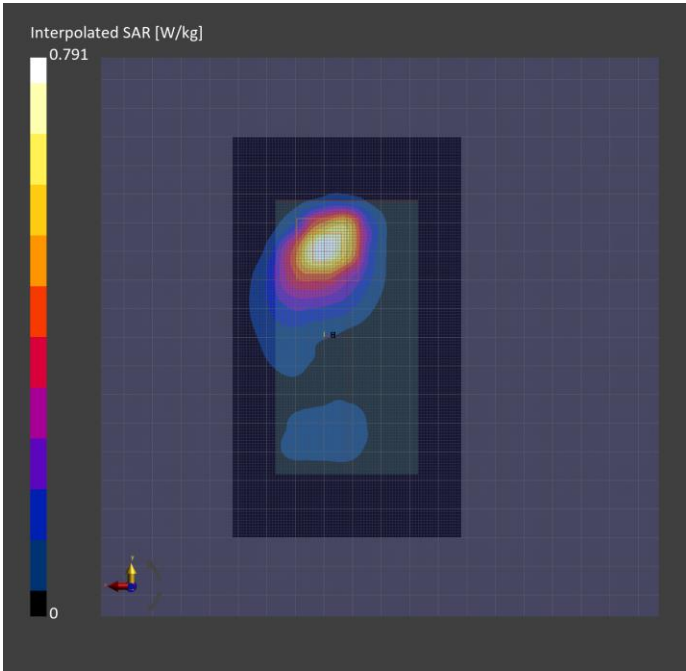
Phantom	TSL, Measured Date	Probe, Calibration Date	DAE, Calibration Date
ELI V8.0 (20deg probe tilt) - 2191	HBBL-600-10000 SLAAHU16BC221222-1, 2024-Jun-24	EX3DV4 - SN7783, 2024-04-12	DAE4 Sn1724, 2024-03-28

Scan Setup

	Area Scan	Zoom Scan
Grid Extents [mm]	80.0 x 140.0	30.0 x 30.0 x 30.0
Grid Steps [mm]	10.0 x 10.0	5.0 x 5.0 x 1.5
Sensor Surface [mm]	3.0	1.4
Graded Grid	N/A	Yes
Grading Ratio	N/A	1.5
MAIA	N/A	N/A
Surface Detection	All points	VMS + 6p
Scan Method	Measured	Measured

Measurement Results

	Area Scan	Zoom Scan
Date	2024-06-25, 16:23	2024-06-25, 16:33
psSAR1g [W/kg]	0.591	0.601
psSAR10g [W/kg]	0.274	0.251
Power Drift [dB]	-0.06	-0.01
Power Scaling	Disabled	Disabled
Scaling Factor [dB]		
TSL Correction	Positive	Positive
M2/M1 [%]		73.0
Dist 3dB Peak [mm]		6.5



Measurement Report for LWR-1050, EDGE BOTTOM, WLAN 2.4GHz, 802.11b, Channel 1 (2412.000MHz)

Device under Test Properties

Model, Manufacturer	Dimensions [mm]	DUT Type
LWR-1050, Listen Technologies	95.7 x 50.0 x 15.9	Wi-Fi Audio Receiver

Exposure Conditions

Phantom Section, TSL	Position, Test Distance [mm]	Band	Frequency [MHz], Channel Number	Conversion Factor	TSL Conductivity [S/m]	TSL Permittivity
Flat, HSL	EDGE BOTTOM, 0.00	WLAN 2.4GHz	2412.000, 1	6.85	1.72	37.7

Hardware Setup

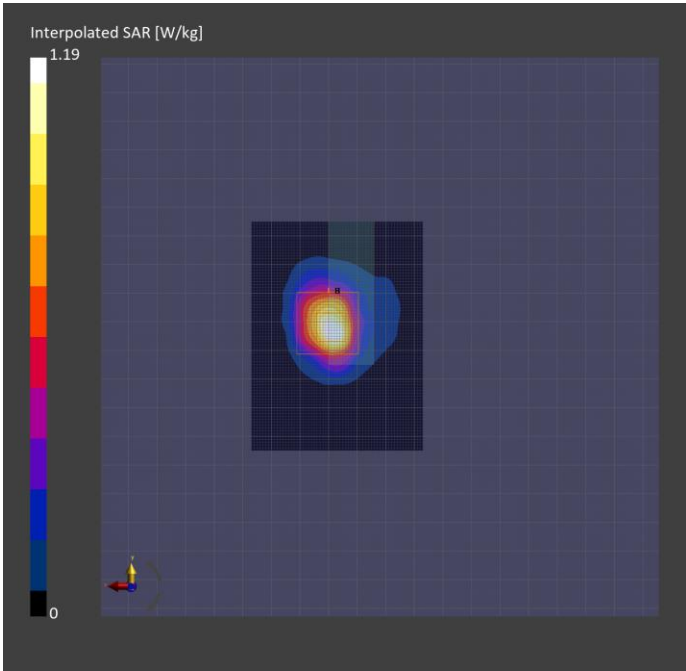
Phantom	TSL, Measured Date	Probe, Calibration Date	DAE, Calibration Date
ELI V8.0 (20deg probe tilt) - 2191	HBBL-600-10000 SLAAHU16BC221222-1, 2024-Jun-21	EX3DV4 - SN7783, 2024-04-12	DAE4 Sn1724, 2024-03-28

Scan Setup

	Area Scan	Zoom Scan
Grid Extents [mm]	60.0 x 80.0	30.0 x 30.0 x 30.0
Grid Steps [mm]	10.0 x 10.0	4.6 x 4.6 x 1.5
Sensor Surface [mm]	3.0	1.4
Graded Grid	N/A	Yes
Grading Ratio	N/A	1.5
MAIA	N/A	N/A
Surface Detection	All points	All points
Scan Method	Measured	Measured

Measurement Results

	Area Scan	Zoom Scan
Date	2024-06-21, 19:55	2024-06-21, 20:13
psSAR1g [W/kg]	0.892	0.944
psSAR10g [W/kg]	0.373	0.337
Power Drift [dB]	-0.04	-0.05
Power Scaling	Disabled	Disabled
Scaling Factor [dB]		
TSL Correction	Positive	Positive
M2/M1 [%]		73.6
Dist 3dB Peak [mm]		5.9



Measurement Report for LWR-1050, EDGE BOTTOM, WLAN 2.4GHz, 802.11b, Channel 7 (2442.000MHz)

Device under Test Properties

Model, Manufacturer	Dimensions [mm]	DUT Type
LWR-1050, Listen Technologies	95.7 x 50.0 x 15.9	Wi-Fi Audio Receiver

Exposure Conditions

Phantom Section, TSL	Position, Test Distance [mm]	Band	Frequency [MHz], Channel Number	Conversion Factor	TSL Conductivity [S/m]	TSL Permittivity
Flat, HSL	EDGE BOTTOM, 0.00	WLAN 2.4GHz	2442.000, 7	6.85	1.73	37.6

Hardware Setup

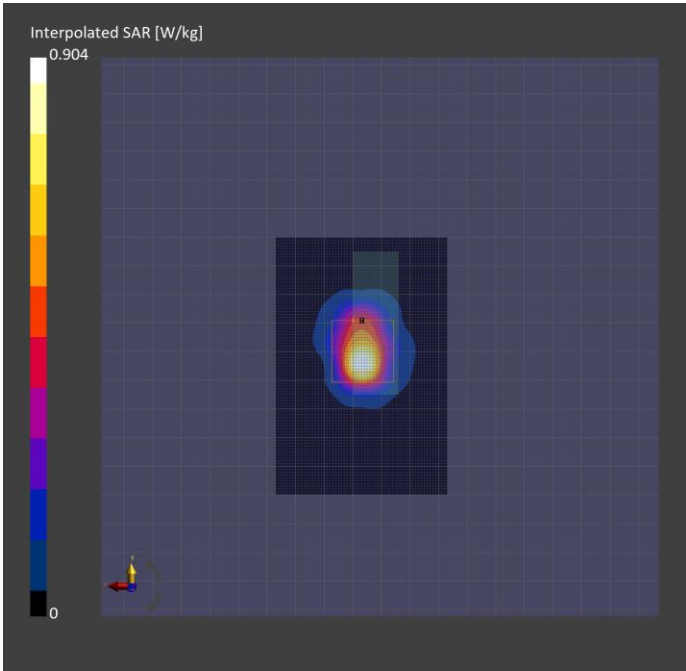
Phantom	TSL, Measured Date	Probe, Calibration Date	DAE, Calibration Date
ELI V8.0 (20deg probe tilt) - 2191	HBBL-600-10000 SLAAHU16BC221222-1, 2024-Jun-21	EX3DV4 - SN7783, 2024-04-12	DAE4 Sn1724, 2024-03-28

Scan Setup

	Area Scan	Zoom Scan
Grid Extents [mm]	60.0 x 90.0	30.0 x 30.0 x 30.0
Grid Steps [mm]	15.0 x 15.0	4.8 x 4.8 x 1.5
Sensor Surface [mm]	3.0	1.4
Graded Grid	N/A	Yes
Grading Ratio	N/A	1.5
MAIA	N/A	N/A
Surface Detection	All points	All points
Scan Method	Measured	Measured

Measurement Results

	Area Scan	Zoom Scan
Date	2024-06-21, 17:30	2024-06-21, 18:06
psSAR1g [W/kg]	0.634	0.689
psSAR10g [W/kg]	0.252	0.250
Power Drift [dB]	0.17	-0.01
Power Scaling	Disabled	Disabled
Scaling Factor [dB]		
TSL Correction	Positive	Positive
M2/M1 [%]		72.3
Dist 3dB Peak [mm]		5.6



Measurement Report for LWR-1050, EDGE LEFT, WLAN 2.4GHz, 802.11b, Channel 1 (2412.000MHz)

Device under Test Properties

Model, Manufacturer	Dimensions [mm]	DUT Type
LWR-1050, Listen Technologies	95.7 x 50.0 x 15.9	Wi-Fi Audio Receiver

Exposure Conditions

Phantom Section, TSL	Position, Test Distance [mm]	Band	Frequency [MHz], Channel Number	Conversion Factor	TSL Conductivity [S/m]	TSL Permittivity
Flat, HSL	EDGE LEFT, 0.00	WLAN 2.4GHz	2412.000, 1	6.77	1.75	37.2

Hardware Setup

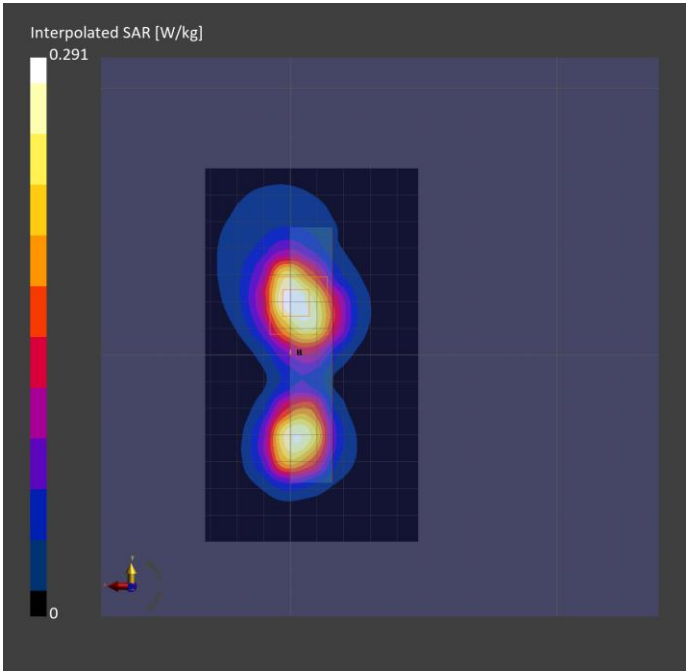
Phantom	TSL, Measured Date	Probe, Calibration Date	DAE, Calibration Date
ELI V8.0 (20deg probe tilt) - 2191	HBBL-600-10000 SLAAHU16BC221222-1, 2024-Jul-12	EX3DV4 - SN7783, 2024-04-12	DAE4 Sn1724, 2024-03-28

Scan Setup

	Area Scan	Zoom Scan
Grid Extents [mm]	80.0 x 140.0	30.0 x 30.0 x 30.0
Grid Steps [mm]	10.0 x 10.0	5.0 x 5.0 x 1.5
Sensor Surface [mm]	3.0	1.4
Graded Grid	N/A	Yes
Grading Ratio	N/A	1.5
MAIA	Y	N/A
Surface Detection	All points	All points
Scan Method	Measured	Measured

Measurement Results

	Area Scan	Zoom Scan
Date	2024-07-12, 18:39	2024-07-12, 19:01
psSAR1g [W/kg]	0.230	0.220
psSAR10g [W/kg]	0.117	0.110
Power Drift [dB]	-0.02	0.12
Power Scaling	Disabled	Disabled
Scaling Factor [dB]		
TSL Correction	Positive	Positive
M2/M1 [%]		74.0
Dist 3dB Peak [mm]		9.3





Measurement Report for LWR-1050, EDGE LEFT, WLAN 2.4GHz, 802.11b, Channel 7 (2442.000MHz)

Device under Test Properties

Model, Manufacturer	Dimensions [mm]	DUT Type
LWR-1050, Listen Technologies	95.7 x 50.0 x 15.9	Wi-Fi Audio Receiver

Exposure Conditions

Phantom Section, TSL	Position, Test Distance [mm]	Band	Frequency [MHz], Channel Number	Conversion Factor	TSL Conductivity [S/m]	TSL Permittivity
Flat, HSL	EDGE LEFT, 0.00	WLAN 2.4GHz	2442.000, 7	6.77	1.76	37.1

Hardware Setup

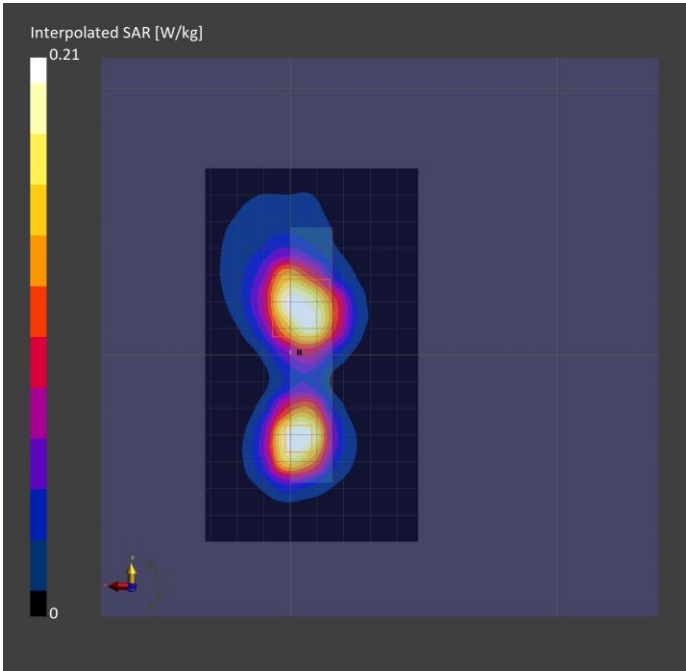
Phantom	TSL, Measured Date	Probe, Calibration Date	DAE, Calibration Date
ELI V8.0 (20deg probe tilt) - 2191	HBBL-600-10000 SLAAHU16BC221222-1, 2024-Jul-12	EX3DV4 - SN7783, 2024-04-12	DAE4 Sn1724, 2024-03-28

Scan Setup

	Area Scan	Zoom Scan
Grid Extents [mm]	80.0 x 140.0	30.0 x 30.0 x 30.0
Grid Steps [mm]	10.0 x 10.0	5.0 x 5.0 x 1.5
Sensor Surface [mm]	3.0	1.4
Graded Grid	N/A	Yes
Grading Ratio	N/A	1.5
MAIA	Y	N/A
Surface Detection	All points	All points
Scan Method	Measured	Measured

Measurement Results

	Area Scan	Zoom Scan
Date	2024-07-12, 18:03	2024-07-12, 18:20
psSAR1g [W/kg]	0.165	0.187
psSAR10g [W/kg]	0.083	0.078
Power Drift [dB]	-0.15	0.13
Power Scaling	Disabled	Disabled
Scaling Factor [dB]		
TSL Correction	Positive	Positive
M2/M1 [%]		78.0
Dist 3dB Peak [mm]		5.1



Measurement Report for LWR-1050, FRONT, WLAN 2.4GHz, 802.11b, Channel 1 (2412.000MHz), Repeat

Device under Test Properties

Model, Manufacturer	Dimensions [mm]	DUT Type
LWR-1050, Listen Technologies	95.7 x 50.0 x 15.9	Wi-Fi Audio Receiver

Exposure Conditions

Phantom Section, TSL	Position, Test Distance [mm]	Band	Frequency [MHz], Channel Number	Conversion Factor	TSL Conductivity [S/m]	TSL Permittivity
Flat, HSL	FRONT, 0.00	WLAN 2.4GHz	2412.000, 1	6.77	1.75	37.2

Hardware Setup

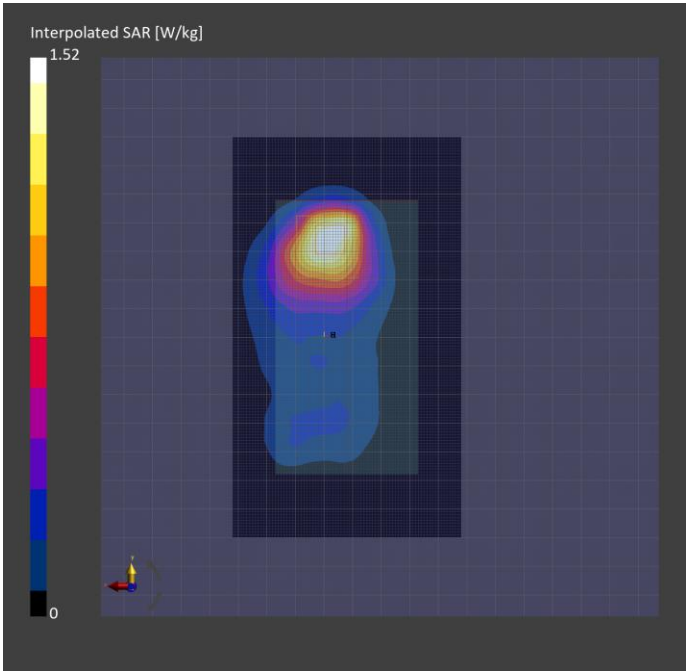
Phantom	TSL, Measured Date	Probe, Calibration Date	DAE, Calibration Date
ELI V8.0 (20deg probe tilt) - 2191	HBBL-600-10000 SLAAHU16BC221222-1, 2024-Jul-12	EX3DV4 - SN7783, 2024-04-12	DAE4 Sn1724, 2024-03-28

Scan Setup

	Area Scan	Zoom Scan
Grid Extents [mm]	80.0 x 140.0	30.0 x 30.0 x 30.0
Grid Steps [mm]	10.0 x 10.0	5.0 x 5.0 x 1.5
Sensor Surface [mm]	3.0	1.4
Graded Grid	N/A	Yes
Grading Ratio	N/A	1.5
MAIA	N/A	N/A
Surface Detection	VMS + 6p	VMS + 6p
Scan Method	Measured	Measured

Measurement Results

	Area Scan	Zoom Scan
Date	2024-07-12, 20:40	2024-07-12, 21:14
psSAR1g [W/kg]	1.18	1.27
psSAR10g [W/kg]	0.595	0.567
Power Drift [dB]	-0.03	-0.01
Power Scaling	Disabled	Disabled
Scaling Factor [dB]		
TSL Correction	Positive	Positive
M2/M1 [%]		72.6
Dist 3dB Peak [mm]		8.0



Measurement Report for LWR-1050, BACK, WLAN 2.4GHz, 802.11g, Channel 7 (2442.000MHz)

Device under Test Properties

Model, Manufacturer	Dimensions [mm]	DUT Type
LWR-1050, Listen Technologies	95.7 x 50.0 x 15.9	Wi-Fi Audio Receiver

Exposure Conditions

Phantom Section, TSL	Position, Test Distance [mm]	Band	Frequency [MHz], Channel Number	Conversion Factor	TSL Conductivity [S/m]	TSL Permittivity
Flat, HSL	BACK, 0.00	WLAN 2.4GHz	2442.000, 7	6.85	1.71	36.2

Hardware Setup

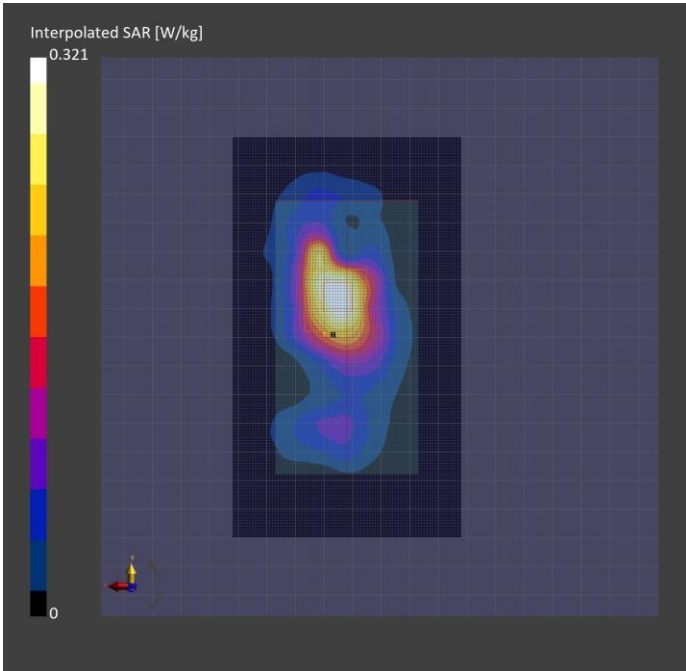
Phantom	TSL, Measured Date	Probe, Calibration Date	DAE, Calibration Date
ELI V8.0 (20deg probe tilt) - 2191	HBBL-600-10000 SLAAHU16BC221222-1, 2024-Jun-27	EX3DV4 - SN7783, 2024-04-12	DAE4 Sn1724, 2024-03-28

Scan Setup

	Area Scan	Zoom Scan
Grid Extents [mm]	80.0 x 140.0	30.0 x 30.0 x 30.0
Grid Steps [mm]	10.0 x 10.0	5.0 x 5.0 x 1.5
Sensor Surface [mm]	3.0	1.4
Graded Grid	N/A	Yes
Grading Ratio	N/A	1.5
MAIA	Y	N/A
Surface Detection	VMS + 6p	VMS + 6p
Scan Method	Measured	Measured

Measurement Results

	Area Scan	Zoom Scan
Date	2024-06-27, 18:44	2024-06-27, 18:54
psSAR1g [W/kg]	0.257	0.256
psSAR10g [W/kg]	0.128	0.121
Power Drift [dB]	0.03	0.08
Power Scaling	Disabled	Disabled
Scaling Factor [dB]		
TSL Correction	Positive	Positive
M2/M1 [%]		66.1
Dist 3dB Peak [mm]		6.5



Measurement Report for LWR-1050, FRONT, WLAN 2.4GHz, 802.11g, Channel 7 (2442.000MHz)

Device under Test Properties

Model, Manufacturer	Dimensions [mm]	DUT Type
LWR-1050, Listen Technologies	95.7 x 50.0 x 15.9	Wi-Fi Audio Receiver

Exposure Conditions

Phantom Section, TSL	Position, Test Distance [mm]	Band	Frequency [MHz], Channel Number	Conversion Factor	TSL Conductivity [S/m]	TSL Permittivity
Flat, HSL	FRONT, 0.00	WLAN 2.4GHz	2442.000, 7	6.85	1.84	37.5

Hardware Setup

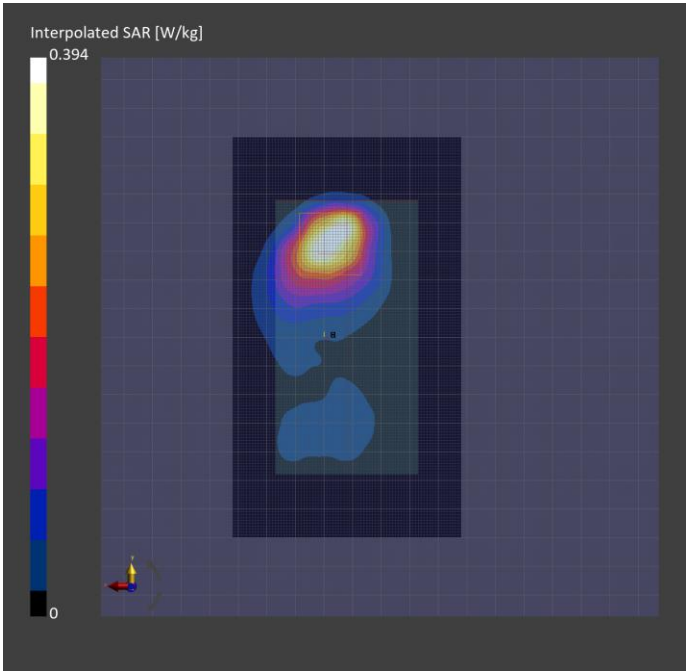
Phantom	TSL, Measured Date	Probe, Calibration Date	DAE, Calibration Date
ELI V8.0 (20deg probe tilt) - 2191	HBBL-600-10000 SLAAHU16BC221222-1, 2024-Jun-24	EX3DV4 - SN7783, 2024-04-12	DAE4 Sn1724, 2024-03-28

Scan Setup

	Area Scan	Zoom Scan
Grid Extents [mm]	80.0 x 140.0	30.0 x 30.0 x 30.0
Grid Steps [mm]	10.0 x 10.0	5.0 x 5.0 x 1.5
Sensor Surface [mm]	3.0	1.4
Graded Grid	N/A	Yes
Grading Ratio	N/A	1.5
MAIA	N/A	N/A
Surface Detection	VMS + 6p	VMS + 6p
Scan Method	Measured	Measured

Measurement Results

	Area Scan	Zoom Scan
Date	2024-06-25, 16:56	2024-06-25, 17:17
psSAR1g [W/kg]	0.307	0.331
psSAR10g [W/kg]	0.147	0.137
Power Drift [dB]	-0.02	-0.04
Power Scaling	Disabled	Disabled
Scaling Factor [dB]		
TSL Correction	Positive	Positive
M2/M1 [%]		71.5
Dist 3dB Peak [mm]		6.4



Measurement Report for LWR-1050, EDGE BOTTOM, WLAN 2.4GHz, 802.11g, Channel 7 (2442.000MHz)

Device under Test Properties

Model, Manufacturer	Dimensions [mm]	DUT Type
LWR-1050, Listen Technologies	95.7 x 50.0 x 15.9	Wi-Fi Audio Receiver

Exposure Conditions

Phantom Section, TSL	Position, Test Distance [mm]	Band	Frequency [MHz], Channel Number	Conversion Factor	TSL Conductivity [S/m]	TSL Permittivity
Flat, HSL	EDGE BOTTOM, 0.00	WLAN 2.4GHz	2442.000, 7	6.85	1.73	37.6

Hardware Setup

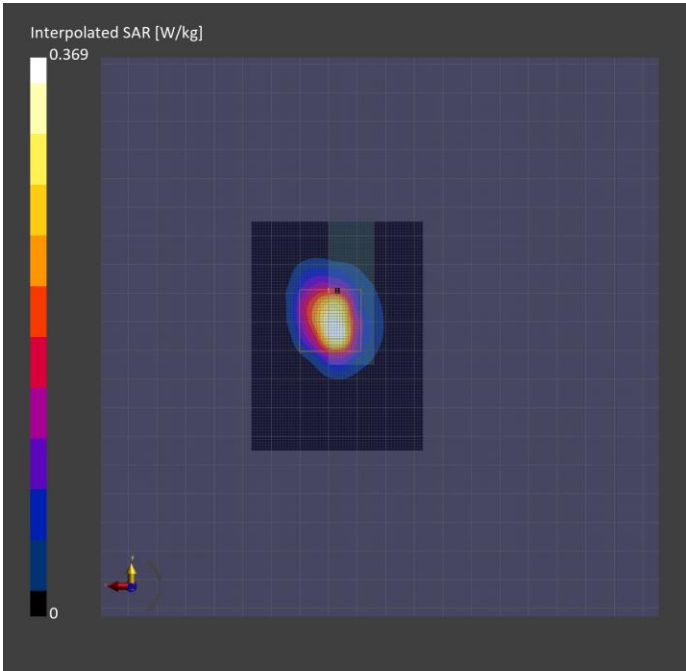
Phantom	TSL, Measured Date	Probe, Calibration Date	DAE, Calibration Date
ELI V8.0 (20deg probe tilt) - 2191	HBBL-600-10000 SLAAHU16BC221222-1, 2024-Jun-21	EX3DV4 - SN7783, 2024-04-12	DAE4 Sn1724, 2024-03-28

Scan Setup

	Area Scan	Zoom Scan
Grid Extents [mm]	60.0 x 80.0	30.0 x 30.0 x 30.0
Grid Steps [mm]	10.0 x 10.0	4.6 x 4.6 x 1.5
Sensor Surface [mm]	3.0	1.4
Graded Grid	N/A	Yes
Grading Ratio	N/A	1.5
MAIA	N/A	N/A
Surface Detection	All points	All points
Scan Method	Measured	Measured

Measurement Results

	Area Scan	Zoom Scan
Date	2024-06-21, 22:02	2024-06-21, 22:18
psSAR1g [W/kg]	0.273	0.284
psSAR10g [W/kg]	0.109	0.100
Power Drift [dB]	-0.01	-0.05
Power Scaling	Disabled	Disabled
Scaling Factor [dB]		
TSL Correction	Positive	Positive
M2/M1 [%]		73.3
Dist 3dB Peak [mm]		6.2



Measurement Report for LWR-1050, EDGE LEFT, WLAN 2.4GHz, 802.11g, Channel 7 (2442.000MHz)

Device under Test Properties

Model, Manufacturer	Dimensions [mm]	DUT Type
LWR-1050, Listen Technologies	95.7 x 50.0 x 15.9	Wi-Fi Audio Receiver

Exposure Conditions

Phantom Section, TSL	Position, Test Distance [mm]	Band	Frequency [MHz], Channel Number	Conversion Factor	TSL Conductivity [S/m]	TSL Permittivity
Flat, HSL	EDGE LEFT, 0.00	WLAN 2.4GHz	2442.000, 7	6.85	1.71	36.2

Hardware Setup

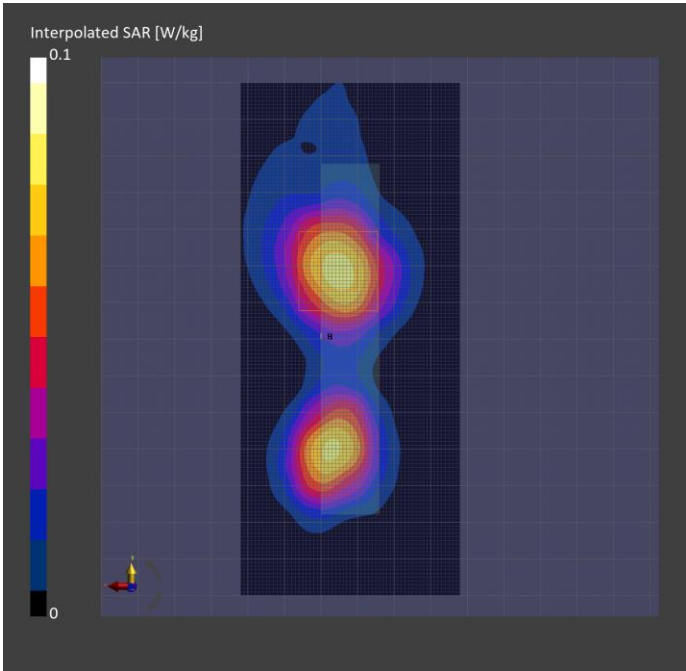
Phantom	TSL, Measured Date	Probe, Calibration Date	DAE, Calibration Date
ELI V8.0 (20deg probe tilt) - 2191	HBBL-600-10000 SLAAHU16BC221222-1, 2024-Jun-27	EX3DV4 - SN7783, 2024-04-12	DAE4 Sn1724, 2024-03-28

Scan Setup

	Area Scan	Zoom Scan
Grid Extents [mm]	60.0 x 140.0	30.0 x 30.0 x 30.0
Grid Steps [mm]	10.0 x 10.0	5.0 x 5.0 x 1.5
Sensor Surface [mm]	3.0	1.4
Graded Grid	N/A	Yes
Grading Ratio	N/A	1.5
MAIA	Y	Y
Surface Detection	VMS + 6p	VMS + 6p
Scan Method	Measured	Measured

Measurement Results

	Area Scan	Zoom Scan
Date	2024-06-28, 16:11	2024-06-28, 16:21
psSAR1g [W/kg]	0.064	0.059
psSAR10g [W/kg]	0.032	0.029
Power Drift [dB]	0.18	-0.10
Power Scaling	Disabled	Disabled
Scaling Factor [dB]		
TSL Correction	Positive	Positive
M2/M1 [%]		84.3
Dist 3dB Peak [mm]		10.3



Measurement Report for LWR-1050, BACK, WLAN 2.4GHz, 802.11n20, Channel 1 (2412.000MHz)

Device under Test Properties

Model, Manufacturer	Dimensions [mm]	DUT Type
LWR-1050, Listen Technologies	95.7 x 50.0 x 15.9	Wi-Fi Audio Receiver

Exposure Conditions

Phantom Section, TSL	Position, Test Distance [mm]	Band	Frequency [MHz], Channel Number	Conversion Factor	TSL Conductivity [S/m]	TSL Permittivity
Flat, HSL	BACK, 0.00	WLAN 2.4GHz	2412.000, 1	6.85	1.69	36.3

Hardware Setup

Phantom	TSL, Measured Date	Probe, Calibration Date	DAE, Calibration Date
ELI V8.0 (20deg probe tilt) - 2191	HBBL-600-10000 SLAAHU16BC221222-1, 2024-Jun-27	EX3DV4 - SN7783, 2024-04-12	DAE4 Sn1724, 2024-03-28

Scan Setup

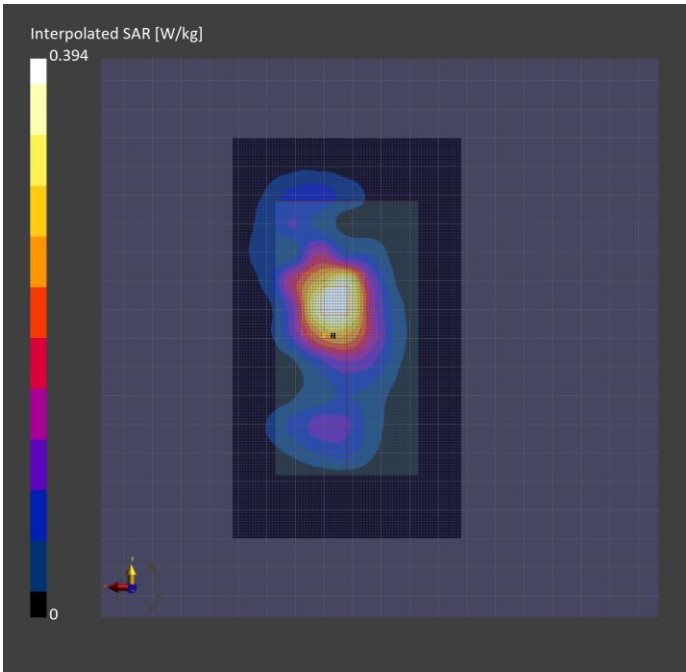
	Area Scan	Zoom Scan
Grid Extents [mm]	80.0 x 140.0	30.0 x 30.0 x 30.0
Grid Steps [mm]	10.0 x 10.0	5.0 x 5.0 x 1.5
Sensor Surface [mm]	3.0	1.4
Graded Grid	N/A	Yes
Grading Ratio	N/A	1.5
MAIA	N/A	N/A
Surface Detection	All points	VMS + 6p
Scan Method	Measured	Measured

Measurement Results

	Area Scan	Zoom Scan
Date	2024-06-27, 19:36	2024-06-27, 20:03
psSAR1g [W/kg]	0.316	0.323
psSAR10g [W/kg]	0.157	0.152
Power Drift [dB]	0.03	-0.02
Power Scaling	Disabled	Disabled
Scaling Factor [dB]		
TSL Correction	Positive	Positive
M2/M1 [%]		78.0
Dist 3dB Peak [mm]		6.0

Warning(s) / Error(s)

Details	Area Scan	Zoom Scan
Warning(s)		Power drift exceeds warning threshold.
Error(s)		



Measurement Report for LWR-1050, BACK, WLAN 2.4GHz, 802.11n20, Channel 7 (2442.000MHz)

Device under Test Properties

Model, Manufacturer	Dimensions [mm]	DUT Type
LWR-1050, Listen Technologies	95.7 x 50.0 x 15.9	Wi-Fi Audio Receiver

Exposure Conditions

Phantom Section, TSL	Position, Test Distance [mm]	Band	Frequency [MHz], Channel Number	Conversion Factor	TSL Conductivity [S/m]	TSL Permittivity
Flat, HSL	BACK, 0.00	WLAN 2.4GHz	2442.000, 7	6.85	1.71	36.2

Hardware Setup

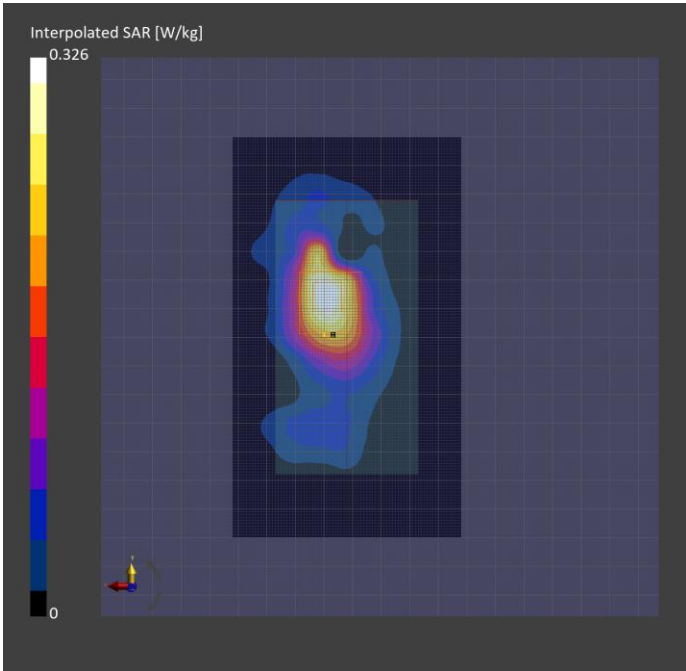
Phantom	TSL, Measured Date	Probe, Calibration Date	DAE, Calibration Date
ELI V8.0 (20deg probe tilt) - 2191	HBBL-600-10000 SLAAHU16BC221222-1, 2024-Jun-27	EX3DV4 - SN7783, 2024-04-12	DAE4 Sn1724, 2024-03-28

Scan Setup

	Area Scan	Zoom Scan
Grid Extents [mm]	80.0 x 140.0	30.0 x 30.0 x 30.0
Grid Steps [mm]	10.0 x 10.0	5.0 x 5.0 x 1.5
Sensor Surface [mm]	3.0	1.4
Graded Grid	N/A	Yes
Grading Ratio	N/A	1.5
MAIA	Y	N/A
Surface Detection	VMS + 6p	All points
Scan Method	Measured	Measured

Measurement Results

	Area Scan	Zoom Scan
Date	2024-06-27, 20:12	2024-06-27, 20:53
psSAR1g [W/kg]	0.261	0.248
psSAR10g [W/kg]	0.128	0.116
Power Drift [dB]	-0.01	-0.07
Power Scaling	Disabled	Disabled
Scaling Factor [dB]		
TSL Correction	Positive	Positive
M2/M1 [%]		62.3
Dist 3dB Peak [mm]		6.5





Measurement Report for LWR-1050, FRONT, WLAN 2.4GHz, 802.11n20, Channel 1 (2412.000MHz)

Device under Test Properties

Model, Manufacturer	Dimensions [mm]	DUT Type
LWR-1050, Listen Technologies	95.7 x 50.0 x 15.9	Wi-Fi Audio Receiver

Exposure Conditions

Phantom Section, TSL	Position, Test Distance [mm]	Band	Frequency [MHz], Channel Number	Conversion Factor	TSL Conductivity [S/m]	TSL Permittivity
Flat, HSL	FRONT, 0.00	WLAN 2.4GHz	2412.000, 1	6.85	1.82	37.6

Hardware Setup

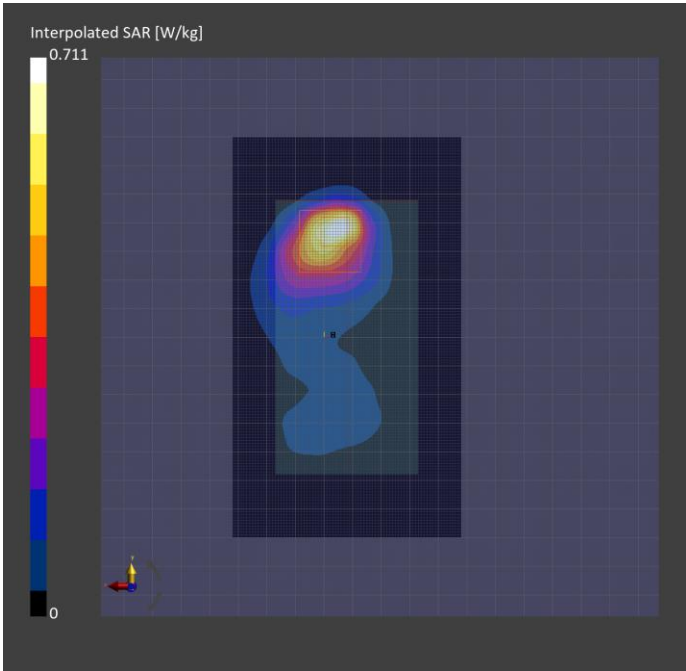
Phantom	TSL, Measured Date	Probe, Calibration Date	DAE, Calibration Date
ELI V8.0 (20deg probe tilt) - 2191	HBBL-600-10000 SLAAHU16BC221222-1, 2024-Jun-24	EX3DV4 - SN7783, 2024-04-12	DAE4 Sn1724, 2024-03-28

Scan Setup

	Area Scan	Zoom Scan
Grid Extents [mm]	80.0 x 140.0	30.0 x 30.0 x 30.0
Grid Steps [mm]	10.0 x 10.0	5.0 x 5.0 x 1.5
Sensor Surface [mm]	3.0	1.4
Graded Grid	N/A	Yes
Grading Ratio	N/A	1.5
MAIA	N/A	N/A
Surface Detection	All points	All points
Scan Method	Measured	Measured

Measurement Results

	Area Scan	Zoom Scan
Date	2024-06-25, 17:35	2024-06-25, 17:53
psSAR1g [W/kg]	0.517	0.537
psSAR10g [W/kg]	0.242	0.226
Power Drift [dB]	-0.01	0.02
Power Scaling	Disabled	Disabled
Scaling Factor [dB]		
TSL Correction	Positive	Positive
M2/M1 [%]		70.6
Dist 3dB Peak [mm]		7.1



Measurement Report for LWR-1050, FRONT, WLAN 2.4GHz, 802.11n20, Channel 7 (2442.000MHz)

Device under Test Properties

Model, Manufacturer	Dimensions [mm]	DUT Type
LWR-1050, Listen Technologies	95.7 x 50.0 x 15.9	Wi-Fi Audio Receiver

Exposure Conditions

Phantom Section, TSL	Position, Test Distance [mm]	Band	Frequency [MHz], Channel Number	Conversion Factor	TSL Conductivity [S/m]	TSL Permittivity
Flat, HSL	FRONT, 0.00	WLAN 2.4GHz	2442.000, 7	6.85	1.84	37.5

Hardware Setup

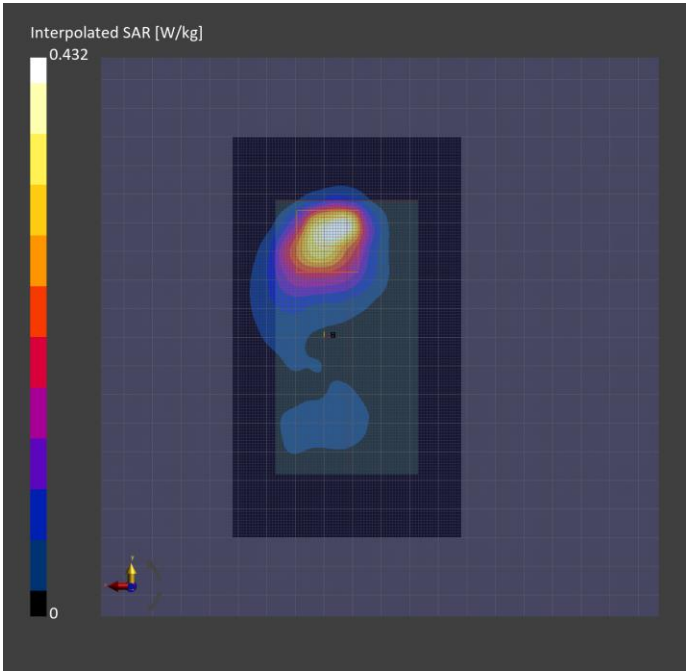
Phantom	TSL, Measured Date	Probe, Calibration Date	DAE, Calibration Date
ELI V8.0 (20deg probe tilt) - 2191	HBBL-600-10000 SLAAHU16BC221222-1, 2024-Jun-24	EX3DV4 - SN7783, 2024-04-12	DAE4 Sn1724, 2024-03-28

Scan Setup

	Area Scan	Zoom Scan
Grid Extents [mm]	80.0 x 140.0	30.0 x 30.0 x 30.0
Grid Steps [mm]	10.0 x 10.0	5.0 x 5.0 x 1.5
Sensor Surface [mm]	3.0	1.4
Graded Grid	N/A	Yes
Grading Ratio	N/A	1.5
MAIA	N/A	N/A
Surface Detection	All points	All points
Scan Method	Measured	Measured

Measurement Results

	Area Scan	Zoom Scan
Date	2024-06-25, 21:09	2024-06-25, 21:47
psSAR1g [W/kg]	0.321	0.342
psSAR10g [W/kg]	0.150	0.140
Power Drift [dB]	-0.02	-0.11
Power Scaling	Disabled	Disabled
Scaling Factor [dB]		
TSL Correction	Positive	Positive
M2/M1 [%]		70.8
Dist 3dB Peak [mm]		6.8



Measurement Report for LWR-1050, EDGE BOTTOM, WLAN 2.4GHz, 802.11n20, Channel 1 (2412.000MHz)

Device under Test Properties

Model, Manufacturer	Dimensions [mm]	DUT Type
LWR-1050, Listen Technologies	95.7 x 50.0 x 15.9	Wi-Fi Audio Receiver

Exposure Conditions

Phantom Section, TSL	Position, Test Distance [mm]	Band	Frequency [MHz], Channel Number	Conversion Factor	TSL Conductivity [S/m]	TSL Permittivity
Flat, HSL	EDGE BOTTOM, 0.00	WLAN 2.4GHz	2412.000, 1	6.85	1.82	37.6

Hardware Setup

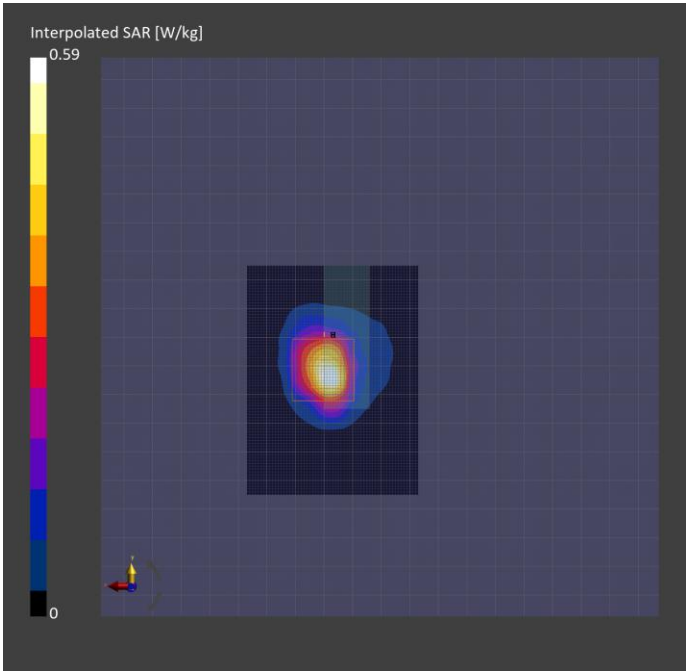
Phantom	TSL, Measured Date	Probe, Calibration Date	DAE, Calibration Date
ELI V8.0 (20deg probe tilt) - 2191	HBBL-600-10000 SLAAHU16BC221222-1, 2024-Jun-24	EX3DV4 - SN7783, 2024-04-12	DAE4 Sn1724, 2024-03-28

Scan Setup

	Area Scan	Zoom Scan
Grid Extents [mm]	60.0 x 80.0	30.0 x 30.0 x 30.0
Grid Steps [mm]	10.0 x 10.0	4.5 x 4.5 x 1.5
Sensor Surface [mm]	3.0	1.4
Graded Grid	N/A	Yes
Grading Ratio	N/A	1.5
MAIA	N/A	N/A
Surface Detection	All points	All points
Scan Method	Measured	Measured

Measurement Results

	Area Scan	Zoom Scan
Date	2024-06-24, 16:41	2024-06-24, 16:58
psSAR1g [W/kg]	0.416	0.450
psSAR10g [W/kg]	0.173	0.162
Power Drift [dB]	-0.13	0.02
Power Scaling	Disabled	Disabled
Scaling Factor [dB]		
TSL Correction	Positive	Positive
M2/M1 [%]		73.7
Dist 3dB Peak [mm]		6.1



Measurement Report for LWR-1050, EDGE BOTTOM, WLAN 2.4GHz, 802.11n20, Channel 7 (2442.000MHz)

Device under Test Properties

Model, Manufacturer	Dimensions [mm]	DUT Type
LWR-1050, Listen Technologies	95.7 x 50.0 x 15.9	Wi-Fi Audio Receiver

Exposure Conditions

Phantom Section, TSL	Position, Test Distance [mm]	Band	Frequency [MHz], Channel Number	Conversion Factor	TSL Conductivity [S/m]	TSL Permittivity
Flat, HSL	EDGE BOTTOM, 0.00	WLAN 2.4GHz	2442.000, 7	6.85	1.84	37.5

Hardware Setup

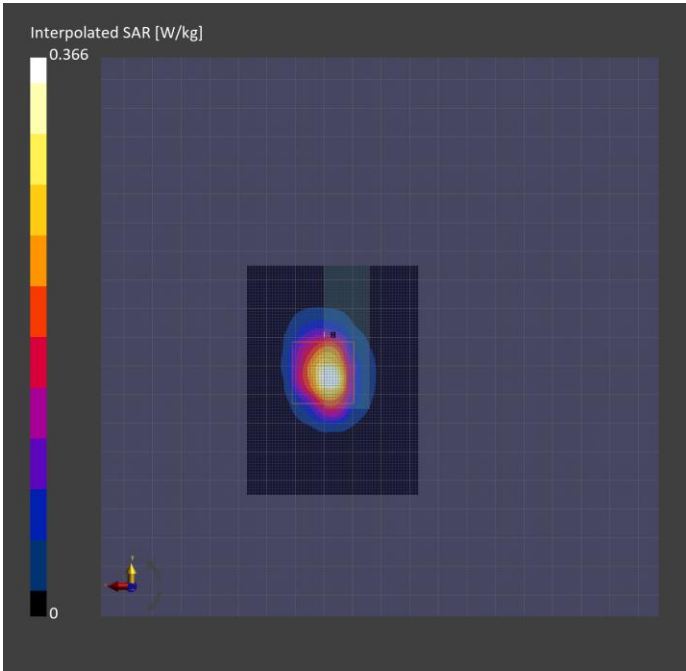
Phantom	TSL, Measured Date	Probe, Calibration Date	DAE, Calibration Date
ELI V8.0 (20deg probe tilt) - 2191	HBBL-600-10000 SLAAHU16BC221222-1, 2024-Jun-24	EX3DV4 - SN7783, 2024-04-12	DAE4 Sn1724, 2024-03-28

Scan Setup

	Area Scan	Zoom Scan
Grid Extents [mm]	60.0 x 80.0	30.0 x 30.0 x 30.0
Grid Steps [mm]	10.0 x 10.0	4.6 x 4.6 x 1.5
Sensor Surface [mm]	3.0	1.4
Graded Grid	N/A	Yes
Grading Ratio	N/A	1.5
MAIA	N/A	N/A
Surface Detection	All points	All points
Scan Method	Measured	Measured

Measurement Results

	Area Scan	Zoom Scan
Date	2024-06-24, 17:31	2024-06-24, 17:47
psSAR1g [W/kg]	0.257	0.276
psSAR10g [W/kg]	0.104	0.10
Power Drift [dB]	-0.03	0.02
Power Scaling	Disabled	Disabled
Scaling Factor [dB]		
TSL Correction	Positive	Positive
M2/M1 [%]		71.5
Dist 3dB Peak [mm]		6.2



Measurement Report for LWR-1050, EDGE LEFT, WLAN 2.4GHz, 802.11n20, Channel 1 (2412.000MHz)

Device under Test Properties

Model, Manufacturer	Dimensions [mm]	DUT Type
LWR-1050, Listen Technologies	95.7 x 50.0 x 15.9	Wi-Fi Audio Receiver

Exposure Conditions

Phantom Section, TSL	Position, Test Distance [mm]	Band	Frequency [MHz], Channel Number	Conversion Factor	TSL Conductivity [S/m]	TSL Permittivity
Flat, HSL	EDGE LEFT, 0.00	WLAN 2.4GHz	2412.000, 1	6.77	1.75	37.2

Hardware Setup

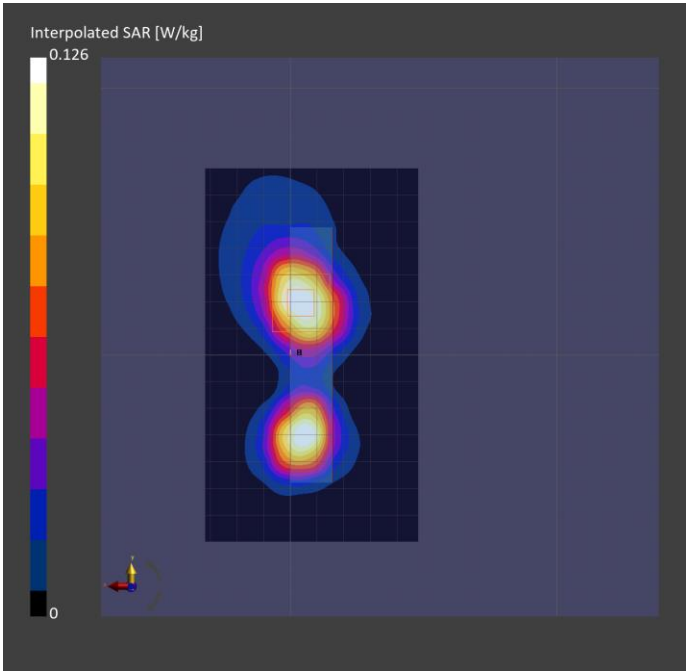
Phantom	TSL, Measured Date	Probe, Calibration Date	DAE, Calibration Date
ELI V8.0 (20deg probe tilt) - 2191	HBBL-600-10000 SLAAHU16BC221222-1, 2024-Jul-12	EX3DV4 - SN7783, 2024-04-12	DAE4 Sn1724, 2024-03-28

Scan Setup

	Area Scan	Zoom Scan
Grid Extents [mm]	80.0 x 140.0	30.0 x 30.0 x 30.0
Grid Steps [mm]	10.0 x 10.0	5.0 x 5.0 x 1.5
Sensor Surface [mm]	3.0	1.4
Graded Grid	N/A	Yes
Grading Ratio	N/A	1.5
MAIA	Y	Y
Surface Detection	All points	All points
Scan Method	Measured	Measured

Measurement Results

	Area Scan	Zoom Scan
Date	2024-07-12, 19:20	2024-07-12, 20:00
psSAR1g [W/kg]	0.100	0.113
psSAR10g [W/kg]	0.051	0.051
Power Drift [dB]	0.07	-0.14
Power Scaling	Disabled	Disabled
Scaling Factor [dB]		
TSL Correction	Positive	Positive
M2/M1 [%]		77.4
Dist 3dB Peak [mm]		9.1



Measurement Report for LWR-1050, EDGE LEFT, WLAN 2.4GHz, 802.11n20, Channel 7 (2442.000MHz)

Device under Test Properties

Model, Manufacturer	Dimensions [mm]	DUT Type
LWR-1050, Listen Technologies	95.7 x 50.0 x 15.9	Wi-Fi Audio Receiver

Exposure Conditions

Phantom Section, TSL	Position, Test Distance [mm]	Band	Frequency [MHz], Channel Number	Conversion Factor	TSL Conductivity [S/m]	TSL Permittivity
Flat, HSL	EDGE LEFT, 0.00	WLAN 2.4GHz	2442.000, 7	6.85	1.71	36.2

Hardware Setup

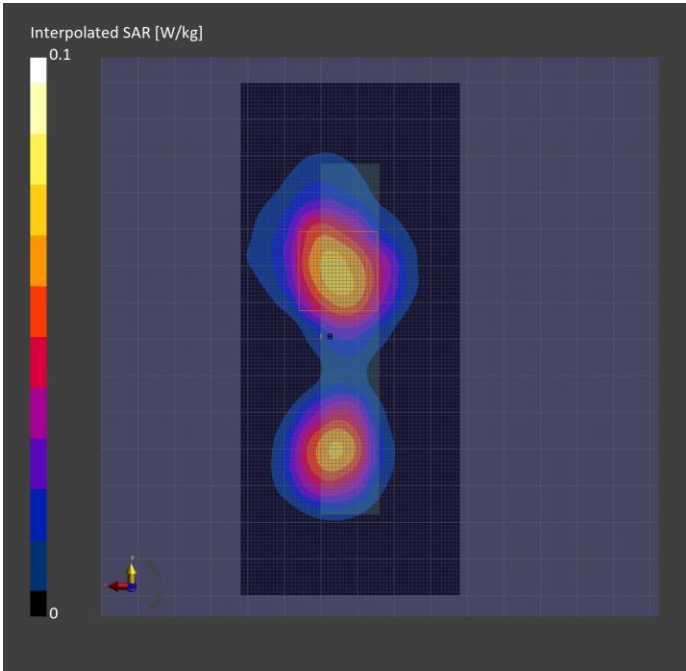
Phantom	TSL, Measured Date	Probe, Calibration Date	DAE, Calibration Date
ELI V8.0 (20deg probe tilt) - 2191	HBBL-600-10000 SLAAHU16BC221222-1, 2024-Jun-27	EX3DV4 - SN7783, 2024-04-12	DAE4 Sn1724, 2024-03-28

Scan Setup

	Area Scan	Zoom Scan
Grid Extents [mm]	60.0 x 140.0	30.0 x 30.0 x 30.0
Grid Steps [mm]	10.0 x 10.0	5.0 x 5.0 x 1.5
Sensor Surface [mm]	3.0	1.4
Graded Grid	N/A	Yes
Grading Ratio	N/A	1.5
MAIA	Y	Y
Surface Detection	All points	All points
Scan Method	Measured	Measured

Measurement Results

	Area Scan	Zoom Scan
Date	2024-06-28, 17:46	2024-06-28, 18:15
psSAR1g [W/kg]	0.057	0.056
psSAR10g [W/kg]	0.029	0.027
Power Drift [dB]	0.10	0.15
Power Scaling	Disabled	Disabled
Scaling Factor [dB]		
TSL Correction	Positive	Positive
M2/M1 [%]		71.3
Dist 3dB Peak [mm]		9.5



5250MHz Band

..

Measurement Report for LWR-1050, BACK, U-NII-1, 802.11a20, Channel 36 (5180.000MHz)

Device under Test Properties

Model, Manufacturer	Dimensions [mm]	DUT Type
LWR-1050, Listen Technologies	95.7 x 50.0 x 15.9	Wi-Fi Audio Receiver

Exposure Conditions

Phantom Section, TSL	Position, Test Distance [mm]	Band	Frequency [MHz], Channel Number	Conversion Factor	TSL Conductivity [S/m]	TSL Permittivity
Flat, HSL	BACK, 0.00	U-NII-1	5180.000, 36	5.0	4.25	33.6

Hardware Setup

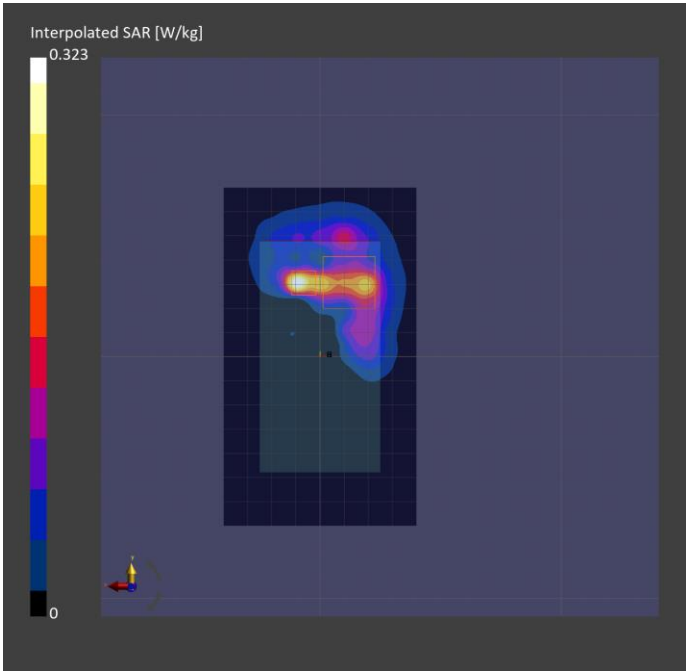
Phantom	TSL, Measured Date	Probe, Calibration Date	DAE, Calibration Date
ELI V8.0 (20deg probe tilt) - 2191	HBBL-600-10000 SLAAHU16BC221222-1, 2024-Jul-02	EX3DV4 - SN7783, 2024-04-12	DAE4 Sn1724, 2024-03-28

Scan Setup

	Area Scan	Zoom Scan
Grid Extents [mm]	80.0 x 140.0	22.0 x 22.0 x 22.0
Grid Steps [mm]	10.0 x 10.0	3.4 x 3.4 x 1.4
Sensor Surface [mm]	3.0	1.4
Graded Grid	N/A	Yes
Grading Ratio	N/A	1.4
MAIA	Y	Y
Surface Detection	All points	All points
Scan Method	Measured	Measured

Measurement Results

	Area Scan	Zoom Scan
Date	2024-07-03, 17:43	2024-07-03, 18:58
psSAR1g [W/kg]	0.169	0.172
psSAR10g [W/kg]	0.054	0.044
Power Drift [dB]	-0.01	-0.09
Power Scaling	Disabled	Disabled
Scaling Factor [dB]		
TSL Correction	Positive	Positive
M2/M1 [%]		61.8
Dist 3dB Peak [mm]		3.1



Measurement Report for LWR-1050, BACK, U-NII-1, 802.11a20, Channel 48 (5240.000MHz)

Device under Test Properties

Model, Manufacturer	Dimensions [mm]	DUT Type
LWR-1050, Listen Technologies	95.7 x 50.0 x 15.9	Wi-Fi Audio Receiver

Exposure Conditions

Phantom Section, TSL	Position, Test Distance [mm]	Band	Frequency [MHz], Channel Number	Conversion Factor	TSL Conductivity [S/m]	TSL Permittivity
Flat, HSL	BACK, 0.00	U-NII-1	5240.000, 48	5.0	4.32	33.4

Hardware Setup

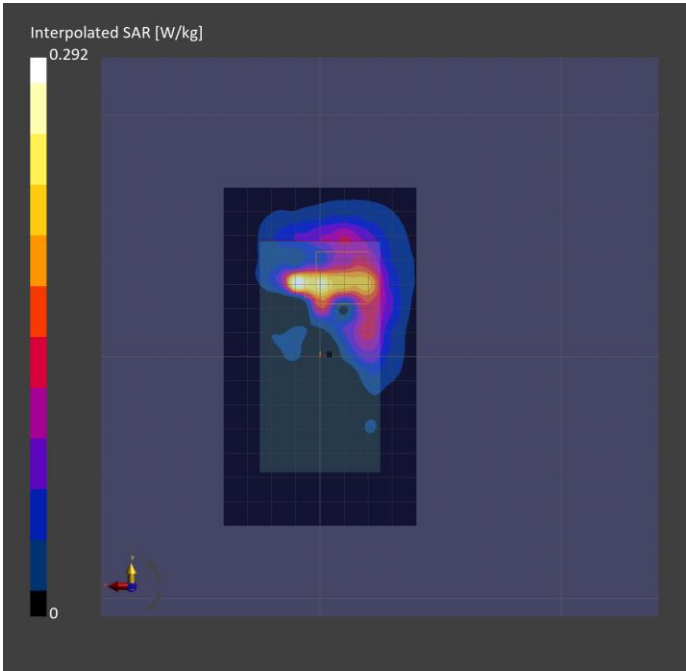
Phantom	TSL, Measured Date	Probe, Calibration Date	DAE, Calibration Date
ELI V8.0 (20deg probe tilt) - 2191	HBBL-600-10000 SLAAHU16BC221222-1, 2024-Jul-02	EX3DV4 - SN7783, 2024-04-12	DAE4 Sn1724, 2024-03-28

Scan Setup

	Area Scan	Zoom Scan
Grid Extents [mm]	80.0 x 140.0	22.0 x 22.0 x 22.0
Grid Steps [mm]	10.0 x 10.0	2.7 x 2.7 x 1.2
Sensor Surface [mm]	3.0	1.4
Graded Grid	N/A	Yes
Grading Ratio	N/A	1.2
MAIA	Y	Y
Surface Detection	All points	All points
Scan Method	Measured	Measured

Measurement Results

	Area Scan	Zoom Scan
Date	2024-07-03, 16:10	2024-07-03, 17:27
psSAR1g [W/kg]	0.173	0.186
psSAR10g [W/kg]	0.057	0.045
Power Drift [dB]	-0.14	-0.01
Power Scaling	Disabled	Disabled
Scaling Factor [dB]		
TSL Correction	Positive	Positive
M2/M1 [%]		69.2
Dist 3dB Peak [mm]		2.2





Measurement Report for LWR-1050, FRONT, U-NII-1, 802.11a20, Channel 36 (5180.000MHz)

Device under Test Properties

Model, Manufacturer	Dimensions [mm]	DUT Type
LWR-1050, Listen Technologies	95.7 x 50.0 x 15.9	Wi-Fi Audio Receiver

Exposure Conditions

Phantom Section, TSL	Position, Test Distance [mm]	Band	Frequency [MHz], Channel Number	Conversion Factor	TSL Conductivity [S/m]	TSL Permittivity
Flat, HSL	FRONT, 0.00	U-NII-1	5180.000, 36	5.0	4.25	33.6

Hardware Setup

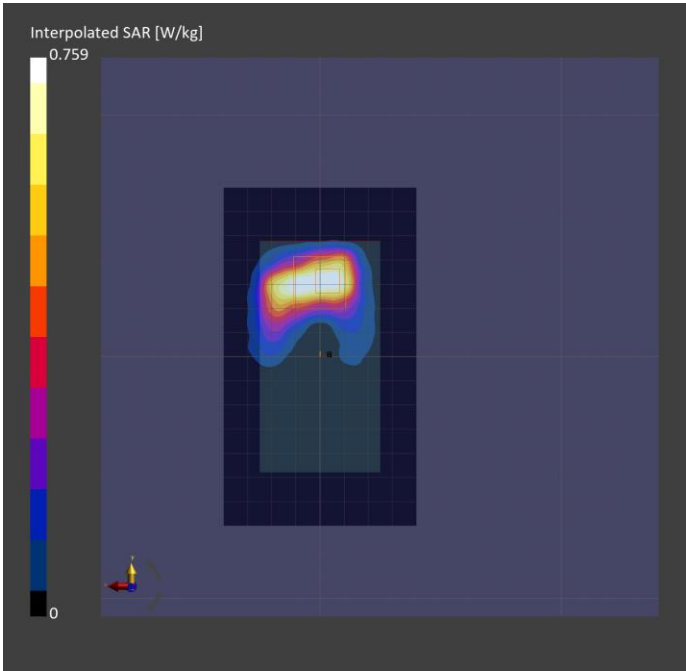
Phantom	TSL, Measured Date	Probe, Calibration Date	DAE, Calibration Date
ELI V8.0 (20deg probe tilt) - 2191	HBBL-600-10000 SLAAHU16BC221222-1, 2024-Jul-02	EX3DV4 - SN7783, 2024-04-12	DAE4 Sn1724, 2024-03-28

Scan Setup

	Area Scan	Zoom Scan
Grid Extents [mm]	80.0 x 140.0	22.0 x 22.0 x 22.0
Grid Steps [mm]	10.0 x 10.0	4.0 x 4.0 x 1.4
Sensor Surface [mm]	3.0	1.4
Graded Grid	N/A	Yes
Grading Ratio	N/A	1.4
MAIA	Y	N/A
Surface Detection	All points	All points
Scan Method	Measured	Measured

Measurement Results

	Area Scan	Zoom Scan
Date	2024-07-02, 21:03	2024-07-02, 22:26
psSAR1g [W/kg]	0.550	0.150
psSAR10g [W/kg]	0.213	0.016
Power Drift [dB]	0.03	0.12
Power Scaling	Disabled	Disabled
Scaling Factor [dB]		
TSL Correction	Positive	Positive
M2/M1 [%]		62.7
Dist 3dB Peak [mm]		1.6



Measurement Report for LWR-1050, FRONT, U-NII-1, 802.11a20, Channel 48 (5240.000MHz)

Device under Test Properties

Model, Manufacturer	Dimensions [mm]	DUT Type
LWR-1050, Listen Technologies	95.7 x 50.0 x 15.9	Wi-Fi Audio Receiver

Exposure Conditions

Phantom Section, TSL	Position, Test Distance [mm]	Band	Frequency [MHz], Channel Number	Conversion Factor	TSL Conductivity [S/m]	TSL Permittivity
Flat, HSL	FRONT, 0.00	U-NII-1	5240.000, 48	5.0	4.32	33.4

Hardware Setup

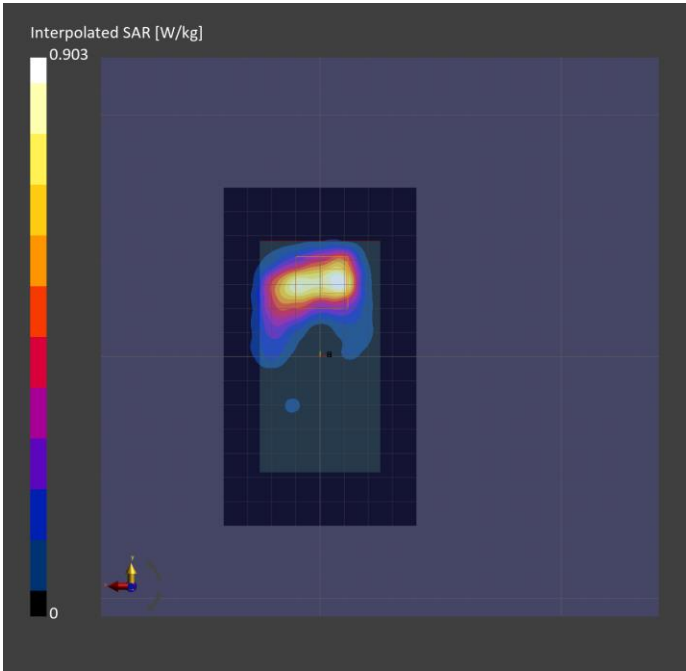
Phantom	TSL, Measured Date	Probe, Calibration Date	DAE, Calibration Date
ELI V8.0 (20deg probe tilt) - 2191	HBBL-600-10000 SLAAHU16BC221222-1, 2024-Jul-02	EX3DV4 - SN7783, 2024-04-12	DAE4 Sn1724, 2024-03-28

Scan Setup

	Area Scan	Zoom Scan
Grid Extents [mm]	80.0 x 140.0	22.0 x 22.0 x 22.0
Grid Steps [mm]	10.0 x 10.0	4.0 x 4.0 x 1.4
Sensor Surface [mm]	3.0	1.4
Graded Grid	N/A	Yes
Grading Ratio	N/A	1.4
MAIA	Y	N/A
Surface Detection	All points	All points
Scan Method	Measured	Measured

Measurement Results

	Area Scan	Zoom Scan
Date	2024-07-02, 20:06	2024-07-02, 20:47
psSAR1g [W/kg]	0.616	0.770
psSAR10g [W/kg]	0.229	0.222
Power Drift [dB]	-0.04	-0.02
Power Scaling	Disabled	Disabled
Scaling Factor [dB]		
TSL Correction	Positive	Positive
M2/M1 [%]		61.6
Dist 3dB Peak [mm]		6.1



Measurement Report for LWR-1050, EDGE BOTTOM, U-NII-1, 802.11a20, Channel 36 (5180.000MHz)

Device under Test Properties

Model, Manufacturer	Dimensions [mm]	DUT Type
LWR-1050, Listen Technologies	95.7 x 50.0 x 15.9	Wi-Fi Audio Receiver

Exposure Conditions

Phantom Section, TSL	Position, Test Distance [mm]	Band	Frequency [MHz], Channel Number	Conversion Factor	TSL Conductivity [S/m]	TSL Permittivity
Flat, HSL	EDGE BOTTOM, 0.00	U-NII-1	5180.000, 36	5.0	4.36	36.0

Hardware Setup

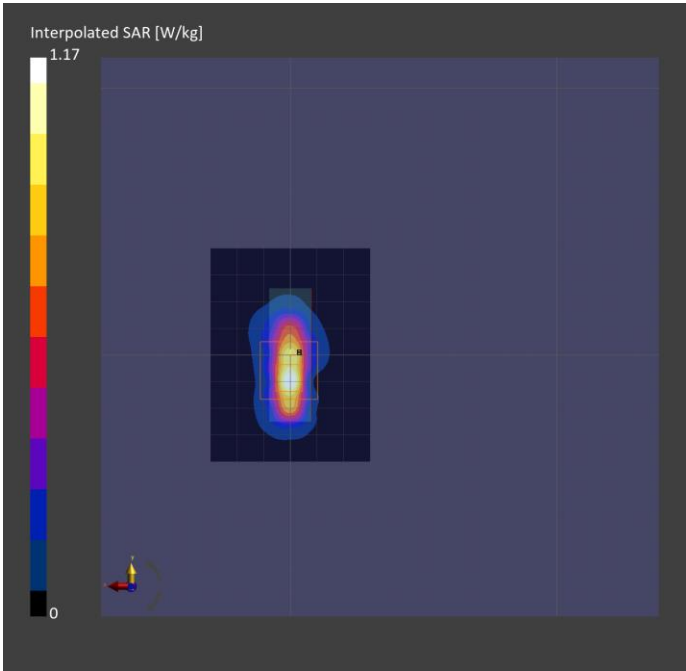
Phantom	TSL, Measured Date	Probe, Calibration Date	DAE, Calibration Date
ELI V8.0 (20deg probe tilt) - 2191	HBBL-600-10000 SLAAHU16BC221222-1, 2024-Jul-01	EX3DV4 - SN7783, 2024-04-12	DAE4 Sn1724, 2024-03-28

Scan Setup

	Area Scan	Zoom Scan
Grid Extents [mm]	60.0 x 80.0	22.0 x 22.0 x 22.0
Grid Steps [mm]	10.0 x 10.0	3.9 x 3.9 x 1.4
Sensor Surface [mm]	3.0	1.4
Graded Grid	N/A	Yes
Grading Ratio	N/A	1.4
MAIA	N/A	N/A
Surface Detection	VMS + 6p	VMS + 6p
Scan Method	Measured	Measured

Measurement Results

	Area Scan	Zoom Scan
Date	2024-07-01, 16:24	2024-07-01, 16:46
psSAR1g [W/kg]	0.713	0.732
psSAR10g [W/kg]	0.214	0.205
Power Drift [dB]	0.04	0.00
Power Scaling	Disabled	Disabled
Scaling Factor [dB]		
TSL Correction	Positive	Positive
M2/M1 [%]		64.9
Dist 3dB Peak [mm]		4.7



Measurement Report for LWR-1050, EDGE BOTTOM, U-NII-1, 802.11a20, Channel 48 (5240.000MHz)

Device under Test Properties

Model, Manufacturer	Dimensions [mm]	DUT Type
LWR-1050, Listen Technologies	95.7 x 50.0 x 15.9	Wi-Fi Audio Receiver

Exposure Conditions

Phantom Section, TSL	Position, Test Distance [mm]	Band	Frequency [MHz], Channel Number	Conversion Factor	TSL Conductivity [S/m]	TSL Permittivity
Flat, HSL	EDGE BOTTOM, 0.00	U-NII-1	5240.000, 48	5.0	4.43	36.0

Hardware Setup

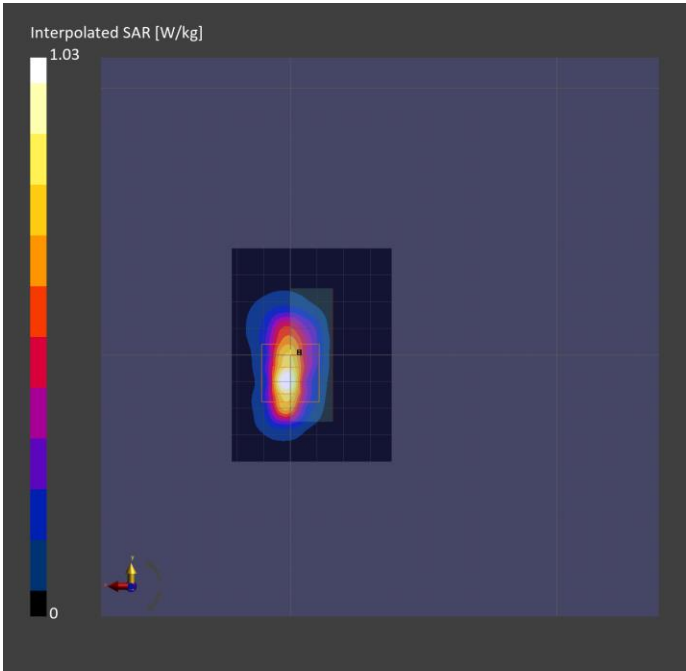
Phantom	TSL, Measured Date	Probe, Calibration Date	DAE, Calibration Date
ELI V8.0 (20deg probe tilt) - 2191	HBBL-600-10000 SLAAHU16BC221222-1, 2024-Jul-01	EX3DV4 - SN7783, 2024-04-12	DAE4 Sn1724, 2024-03-28

Scan Setup

	Area Scan	Zoom Scan
Grid Extents [mm]	60.0 x 80.0	22.0 x 22.0 x 22.0
Grid Steps [mm]	10.0 x 10.0	4.0 x 4.0 x 1.4
Sensor Surface [mm]	3.0	1.4
Graded Grid	N/A	Yes
Grading Ratio	N/A	1.4
MAIA	N/A	N/A
Surface Detection	All points	All points
Scan Method	Measured	Measured

Measurement Results

	Area Scan	Zoom Scan
Date	2024-07-01, 18:13	2024-07-01, 19:47
psSAR1g [W/kg]	0.653	0.786
psSAR10g [W/kg]	0.207	0.212
Power Drift [dB]	-0.15	0.03
Power Scaling	Disabled	Disabled
Scaling Factor [dB]		
TSL Correction	Positive	Positive
M2/M1 [%]		62.9
Dist 3dB Peak [mm]		4.9



Measurement Report for LWR-1050, EDGE LEFT, U-NII-1, 802.11a20, Channel 36 (5180.000MHz)

Device under Test Properties

Model, Manufacturer	Dimensions [mm]	DUT Type
LWR-1050, Listen Technologies	95.7 x 50.0 x 15.9	Wi-Fi Audio Receiver

Exposure Conditions

Phantom Section, TSL	Position, Test Distance [mm]	Band	Frequency [MHz], Channel Number	Conversion Factor	TSL Conductivity [S/m]	TSL Permittivity
Flat, HSL	EDGE LEFT, 0.00	U-NII-1	5180.000, 36	4.98	4.41	32.8

Hardware Setup

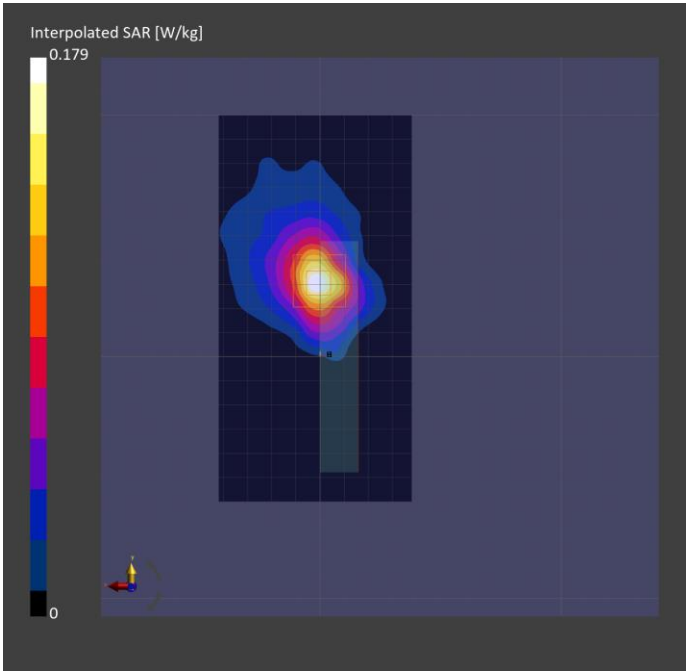
Phantom	TSL, Measured Date	Probe, Calibration Date	DAE, Calibration Date
ELI V8.0 (20deg probe tilt) - 2191	HBBL-600-10000 SLAAHU16BC221222-1, 2024-Jul-10	EX3DV4 - SN7783, 2024-04-12	DAE4 Sn1724, 2024-03-28

Scan Setup

	Area Scan	Zoom Scan
Grid Extents [mm]	80.0 x 160.0	22.0 x 22.0 x 22.0
Grid Steps [mm]	10.0 x 10.0	4.0 x 4.0 x 1.4
Sensor Surface [mm]	3.0	1.4
Graded Grid	N/A	Yes
Grading Ratio	N/A	1.4
MAIA	Y	Y
Surface Detection	All points	All points
Scan Method	Measured	Measured

Measurement Results

	Area Scan	Zoom Scan
Date	2024-07-10, 22:12	2024-07-10, 22:48
psSAR1g [W/kg]	0.124	0.111
psSAR10g [W/kg]	0.046	0.036
Power Drift [dB]	-0.13	-0.13
Power Scaling	Disabled	Disabled
Scaling Factor [dB]		
TSL Correction	Positive	Positive
M2/M1 [%]		56.3
Dist 3dB Peak [mm]		9.0



Measurement Report for LWR-1050, EDGE LEFT, U-NII-1, 802.11a20, Channel 48 (5240.000MHz)

Device under Test Properties

Model, Manufacturer	Dimensions [mm]	DUT Type
LWR-1050, Listen Technologies	95.7 x 50.0 x 15.9	Wi-Fi Audio Receiver

Exposure Conditions

Phantom Section, TSL	Position, Test Distance [mm]	Band	Frequency [MHz], Channel Number	Conversion Factor	TSL Conductivity [S/m]	TSL Permittivity
Flat, HSL	EDGE LEFT, 0.00	U-NII-1	5240.000, 48	4.98	4.50	32.8

Hardware Setup

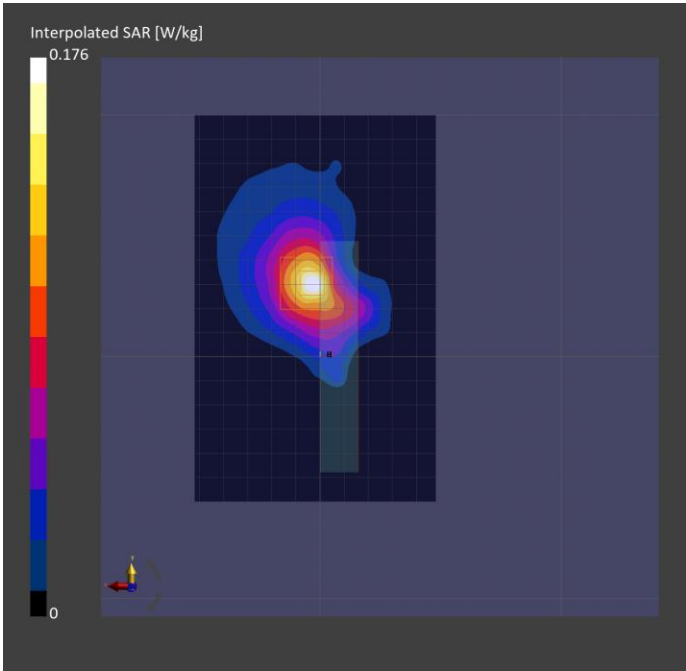
Phantom	TSL, Measured Date	Probe, Calibration Date	DAE, Calibration Date
ELI V8.0 (20deg probe tilt) - 2191	HBBL-600-10000 SLAAHU16BC221222-1, 2024-Jul-11	EX3DV4 - SN7783, 2024-04-12	DAE4 Sn1724, 2024-03-28

Scan Setup

	Area Scan	Zoom Scan
Grid Extents [mm]	100.0 x 160.0	22.0 x 22.0 x 22.0
Grid Steps [mm]	10.0 x 10.0	4.0 x 4.0 x 1.4
Sensor Surface [mm]	3.0	1.4
Graded Grid	N/A	Yes
Grading Ratio	N/A	1.4
MAIA	Y	Y
Surface Detection	All points	All points
Scan Method	Measured	Measured

Measurement Results

	Area Scan	Zoom Scan
Date	2024-07-11, 14:57	2024-07-11, 15:29
psSAR1g [W/kg]	0.118	0.102
psSAR10g [W/kg]	0.045	0.030
Power Drift [dB]	-0.10	0.14
Power Scaling	Disabled	Disabled
Scaling Factor [dB]		
TSL Correction	Positive	Positive
M2/M1 [%]		58.5
Dist 3dB Peak [mm]		7.6



Measurement Report for LWR-1050, EDGE RIGHT, U-NII-1, 802.11a20, Channel 48 (5240.000MHz)

Device under Test Properties

Model, Manufacturer	Dimensions [mm]	DUT Type
LWR-1050, Listen Technologies	95.7 x 50.0 x 15.9	Wireless Audio Receiver

Exposure Conditions

Phantom Section, TSL	Position, Test Distance [mm]	Band	Frequency [MHz], Channel Number	Conversion Factor	TSL Conductivity [S/m]	TSL Permittivity
Flat, HSL	EDGE LEFT, 0.00	U-NII-1	5240.000, 48	5.0	4.28	33.5

Hardware Setup

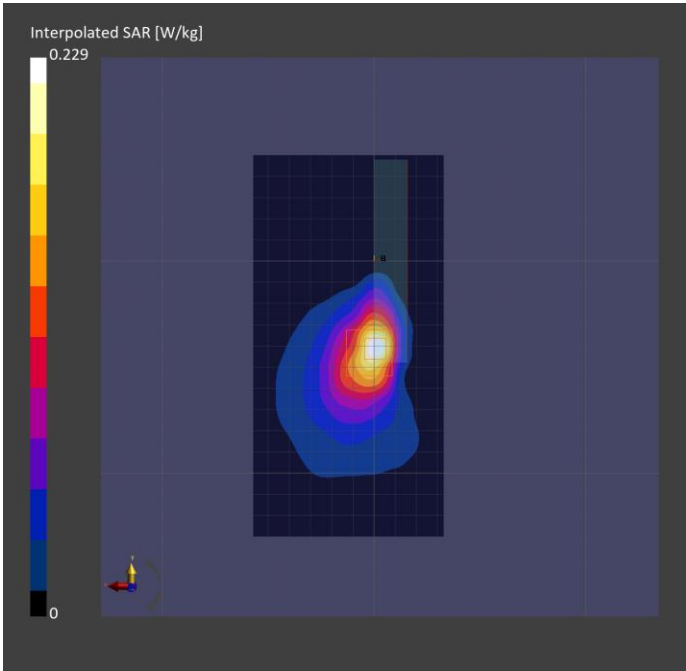
Phantom	TSL, Measured Date	Probe, Calibration Date	DAE, Calibration Date
ELI V8.0 (20deg probe tilt) - 2191	HBBL-600-10000 SLAAHU16BC221222-1, 2024-Sep-05	EX3DV4 - SN7783, 2024-04-12	DAE4 Sn1724, 2024-03-28

Scan Setup

	Area Scan	Zoom Scan
Grid Extents [mm]	90.0 x 180.0	22.0 x 22.0 x 22.0
Grid Steps [mm]	15.0 x 15.0	4.0 x 4.0 x 1.4
Sensor Surface [mm]	3.0	1.4
Graded Grid	N/A	Yes
Grading Ratio	N/A	1.4
MAIA	Y	Y
Surface Detection	All points	All points
Scan Method	Measured	Measured

Measurement Results

	Area Scan	Zoom Scan
Date	2024-09-05, 17:18	2024-09-05, 17:39
psSAR1g [W/kg]	0.160	0.163
psSAR10g [W/kg]	0.062	0.055
Power Drift [dB]	-0.08	0.03
Power Scaling	Disabled	Disabled
Scaling Factor [dB]		
TSL Correction	Positive	Positive
M2/M1 [%]		57.9
Dist 3dB Peak [mm]		6.5



Measurement Report for LWR-1050, BACK, U-NII-1, 802.11n20, Channel 48 (5240.000MHz)

Device under Test Properties

Model, Manufacturer	Dimensions [mm]	DUT Type
LWR-1050, Listen Technologies	95.7 x 50.0 x 15.9	Wi-Fi Audio Receiver

Exposure Conditions

Phantom Section, TSL	Position, Test Distance [mm]	Band	Frequency [MHz], Channel Number	Conversion Factor	TSL Conductivity [S/m]	TSL Permittivity
Flat, HSL	BACK, 0.00	U-NII-1	5240.000, 48	5.0	4.32	33.4

Hardware Setup

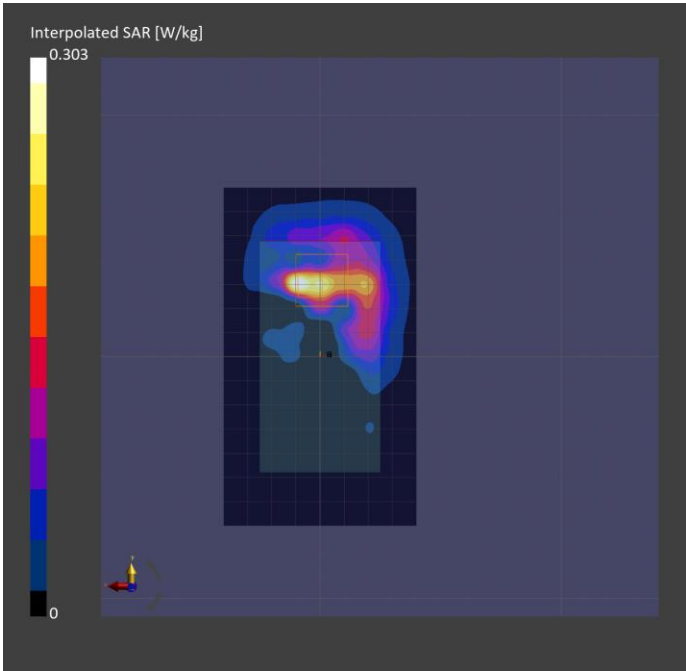
Phantom	TSL, Measured Date	Probe, Calibration Date	DAE, Calibration Date
ELI V8.0 (20deg probe tilt) - 2191	HBBL-600-10000 SLAAHU16BC221222-1, 2024-Jul-02	EX3DV4 - SN7783, 2024-04-12	DAE4 Sn1724, 2024-03-28

Scan Setup

	Area Scan	Zoom Scan
Grid Extents [mm]	80.0 x 140.0	22.0 x 22.0 x 22.0
Grid Steps [mm]	10.0 x 10.0	2.6 x 2.6 x 1.2
Sensor Surface [mm]	3.0	1.4
Graded Grid	N/A	Yes
Grading Ratio	N/A	1.2
MAIA	Y	Y
Surface Detection	All points	All points
Scan Method	Measured	Measured

Measurement Results

	Area Scan	Zoom Scan
Date	2024-07-03, 15:11	2024-07-03, 15:52
psSAR1g [W/kg]	0.181	0.175
psSAR10g [W/kg]	0.057	0.046
Power Drift [dB]	0.10	0.02
Power Scaling	Disabled	Disabled
Scaling Factor [dB]		
TSL Correction	Positive	Positive
M2/M1 [%]		65.8
Dist 3dB Peak [mm]		3.5





Measurement Report for LWR-1050, FRONT, U-NII-1, 802.11n20, Channel 36 (5180.000MHz)

Device under Test Properties

Model, Manufacturer	Dimensions [mm]	DUT Type
LWR-1050, Listen Technologies	95.7 x 50.0 x 15.9	Wi-Fi Audio Receiver

Exposure Conditions

Phantom Section, TSL	Position, Test Distance [mm]	Band	Frequency [MHz], Channel Number	Conversion Factor	TSL Conductivity [S/m]	TSL Permittivity
Flat, HSL	FRONT, 0.00	U-NII-1	5180.000, 36	4.98	4.41	32.8

Hardware Setup

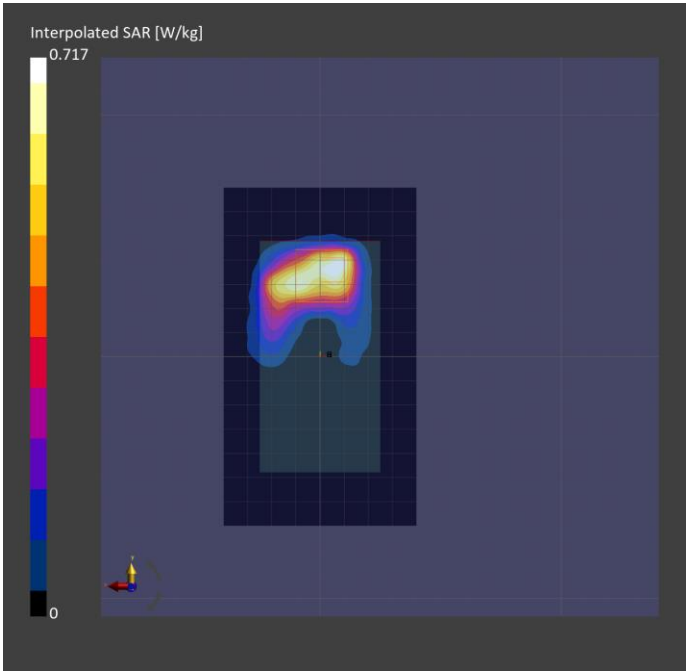
Phantom	TSL, Measured Date	Probe, Calibration Date	DAE, Calibration Date
ELI V8.0 (20deg probe tilt) - 2191	HBBL-600-10000 SLAAHU16BC221222-1, 2024-Jul-10	EX3DV4 - SN7783, 2024-04-12	DAE4 Sn1724, 2024-03-28

Scan Setup

	Area Scan	Zoom Scan
Grid Extents [mm]	80.0 x 140.0	22.0 x 22.0 x 22.0
Grid Steps [mm]	10.0 x 10.0	3.4 x 3.4 x 1.4
Sensor Surface [mm]	3.0	1.4
Graded Grid	N/A	Yes
Grading Ratio	N/A	1.4
MAIA	Y	Y
Surface Detection	All points	All points
Scan Method	Measured	Measured

Measurement Results

	Area Scan	Zoom Scan
Date	2024-07-10, 19:07	2024-07-10, 21:34
psSAR1g [W/kg]	0.506	0.162
psSAR10g [W/kg]	0.198	0.048
Power Drift [dB]	-0.18	0.18
Power Scaling	Disabled	Disabled
Scaling Factor [dB]		
TSL Correction	Positive	Positive
M2/M1 [%]		58.4
Dist 3dB Peak [mm]		3.4



Measurement Report for LWR-1050, FRONT, U-NII-1, 802.11n20, Channel 48 (5240.000MHz)

Device under Test Properties

Model, Manufacturer	Dimensions [mm]	DUT Type
LWR-1050, Listen Technologies	95.7 x 50.0 x 15.9	Wi-Fi Audio Receiver

Exposure Conditions

Phantom Section, TSL	Position, Test Distance [mm]	Band	Frequency [MHz], Channel Number	Conversion Factor	TSL Conductivity [S/m]	TSL Permittivity
Flat, HSL	FRONT, 0.00	U-NII-1	5240.000, 48	5.0	4.32	33.4

Hardware Setup

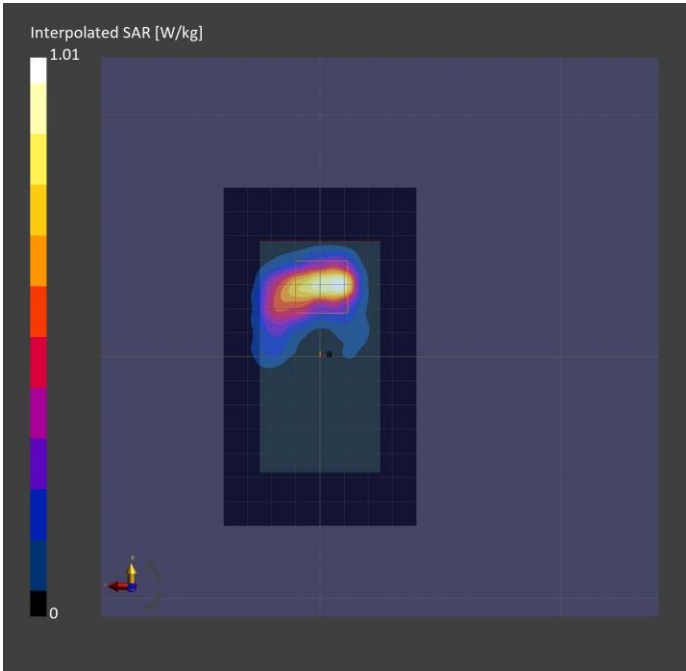
Phantom	TSL, Measured Date	Probe, Calibration Date	DAE, Calibration Date
ELI V8.0 (20deg probe tilt) - 2191	HBBL-600-10000 SLAAHU16BC221222-1, 2024-Jul-02	EX3DV4 - SN7783, 2024-04-12	DAE4 Sn1724, 2024-03-28

Scan Setup

	Area Scan	Zoom Scan
Grid Extents [mm]	80.0 x 140.0	22.0 x 22.0 x 22.0
Grid Steps [mm]	10.0 x 10.0	4.0 x 4.0 x 1.4
Sensor Surface [mm]	3.0	1.4
Graded Grid	N/A	Yes
Grading Ratio	N/A	1.4
MAIA	N/A	N/A
Surface Detection	All points	All points
Scan Method	Measured	Measured

Measurement Results

	Area Scan	Zoom Scan
Date	2024-07-02, 19:25	2024-07-02, 19:42
psSAR1g [W/kg]	0.664	0.758
psSAR10g [W/kg]	0.227	0.216
Power Drift [dB]	-0.01	0.00
Power Scaling	Disabled	Disabled
Scaling Factor [dB]		
TSL Correction	Positive	Positive
M2/M1 [%]		62.8
Dist 3dB Peak [mm]		5.9



Measurement Report for LWR-1050, EDGE BOTTOM, U-NII-1, 802.11n20, Channel 36 (5180.000MHz)

Device under Test Properties

Model, Manufacturer	Dimensions [mm]	DUT Type
LWR-1050, Listen Technologies	95.7 x 50.0 x 15.9	Wi-Fi Audio Receiver

Exposure Conditions

Phantom Section, TSL	Position, Test Distance [mm]	Band	Frequency [MHz], Channel Number	Conversion Factor	TSL Conductivity [S/m]	TSL Permittivity
Flat, HSL	EDGE BOTTOM, 0.00	U-NII-1	5180.000, 36	5.0	4.36	36.0

Hardware Setup

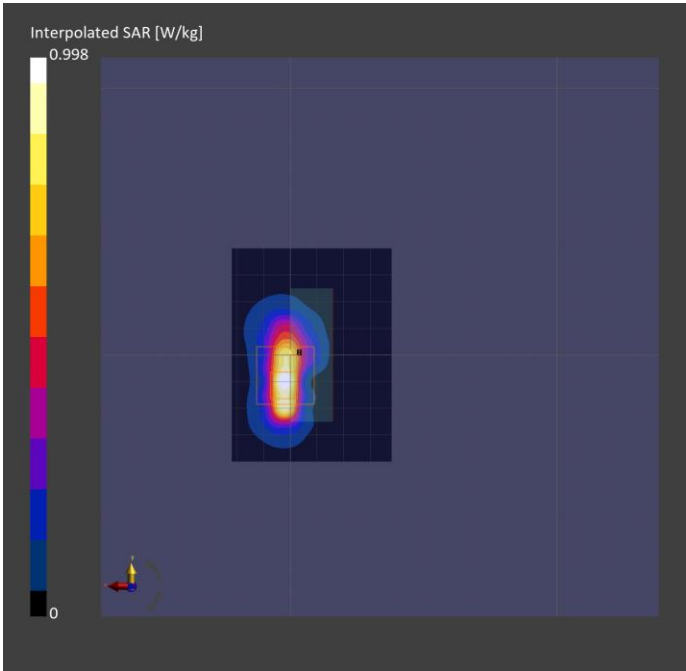
Phantom	TSL, Measured Date	Probe, Calibration Date	DAE, Calibration Date
ELI V8.0 (20deg probe tilt) - 2191	HBBL-600-10000 SLAAHU16BC221222-1, 2024-Jul-01	EX3DV4 - SN7783, 2024-04-12	DAE4 Sn1724, 2024-03-28

Scan Setup

	Area Scan	Zoom Scan
Grid Extents [mm]	60.0 x 80.0	22.0 x 22.0 x 22.0
Grid Steps [mm]	10.0 x 10.0	4.0 x 4.0 x 1.4
Sensor Surface [mm]	3.0	1.4
Graded Grid	N/A	Yes
Grading Ratio	N/A	1.4
MAIA	N/A	N/A
Surface Detection	All points	All points
Scan Method	Measured	Measured

Measurement Results

	Area Scan	Zoom Scan
Date	2024-07-01, 21:00	2024-07-01, 21:56
psSAR1g [W/kg]	0.624	0.697
psSAR10g [W/kg]	0.194	0.189
Power Drift [dB]	0.05	-0.19
Power Scaling	Disabled	Disabled
Scaling Factor [dB]		
TSL Correction	Positive	Positive
M2/M1 [%]		62.4
Dist 3dB Peak [mm]		4.9



Measurement Report for LWR-1050, EDGE BOTTOM, U-NII-1, 802.11n20, Channel 48 (5240.000MHz)

Device under Test Properties

Model, Manufacturer	Dimensions [mm]	DUT Type
LWR-1050, Listen Technologies	95.7 x 50.0 x 15.9	Wi-Fi Audio Receiver

Exposure Conditions

Phantom Section, TSL	Position, Test Distance [mm]	Band	Frequency [MHz], Channel Number	Conversion Factor	TSL Conductivity [S/m]	TSL Permittivity
Flat, HSL	EDGE BOTTOM, 0.00	U-NII-1	5240.000, 48	5.0	4.43	36.0

Hardware Setup

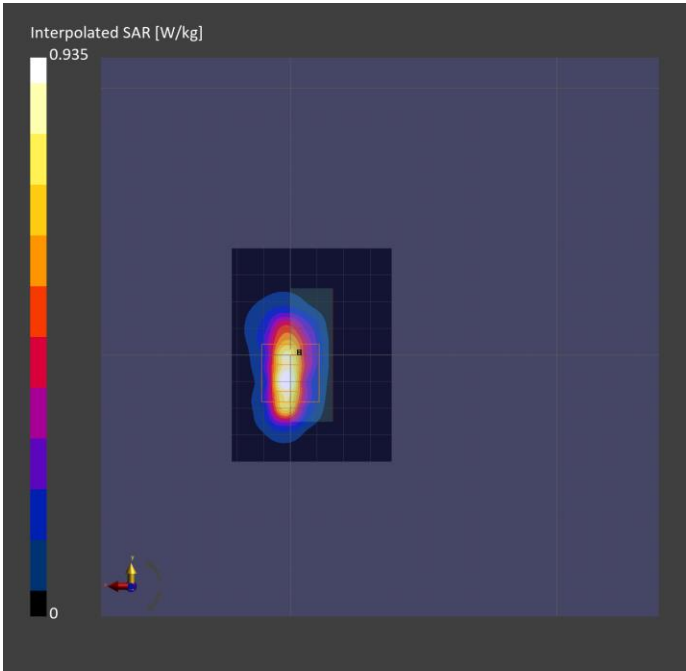
Phantom	TSL, Measured Date	Probe, Calibration Date	DAE, Calibration Date
ELI V8.0 (20deg probe tilt) - 2191	HBBL-600-10000 SLAAHU16BC221222-1, 2024-Jul-01	EX3DV4 - SN7783, 2024-04-12	DAE4 Sn1724, 2024-03-28

Scan Setup

	Area Scan	Zoom Scan
Grid Extents [mm]	60.0 x 80.0	22.0 x 22.0 x 22.0
Grid Steps [mm]	10.0 x 10.0	3.8 x 3.8 x 1.4
Sensor Surface [mm]	3.0	1.4
Graded Grid	N/A	Yes
Grading Ratio	N/A	1.4
MAIA	N/A	N/A
Surface Detection	All points	All points
Scan Method	Measured	Measured

Measurement Results

	Area Scan	Zoom Scan
Date	2024-07-01, 22:11	2024-07-01, 22:56
psSAR1g [W/kg]	0.608	0.769
psSAR10g [W/kg]	0.198	0.207
Power Drift [dB]	-0.09	-0.10
Power Scaling	Disabled	Disabled
Scaling Factor [dB]		
TSL Correction	Positive	Positive
M2/M1 [%]		62.4
Dist 3dB Peak [mm]		5.1



Measurement Report for LWR-1050, EDGE LEFT, U-NII-1, 802.11n20, Channel 48 (5240.000MHz)

Device under Test Properties

Model, Manufacturer	Dimensions [mm]	DUT Type
LWR-1050, Listen Technologies	95.7 x 50.0 x 15.9	Wi-Fi Audio Receiver

Exposure Conditions

Phantom Section, TSL	Position, Test Distance [mm]	Band	Frequency [MHz], Channel Number	Conversion Factor	TSL Conductivity [S/m]	TSL Permittivity
Flat, HSL	EDGE LEFT, 0.00	U-NII-1	5240.000, 48	4.98	4.30	33.2

Hardware Setup

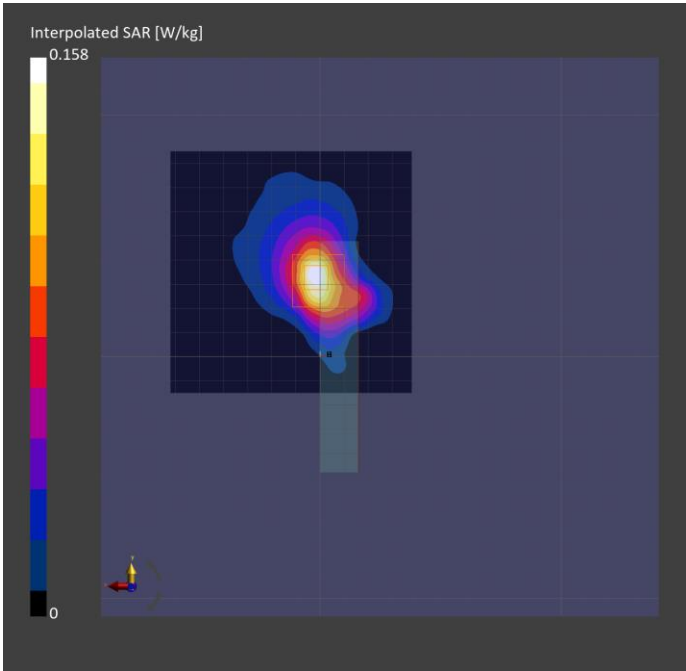
Phantom	TSL, Measured Date	Probe, Calibration Date	DAE, Calibration Date
ELI V8.0 (20deg probe tilt) - 2191	HBBL-600-10000 SLAAHU16BC221222-1, 2024-Jul-05	EX3DV4 - SN7783, 2024-04-12	DAE4 Sn1724, 2024-03-28

Scan Setup

	Area Scan	Zoom Scan
Grid Extents [mm]	100.0 x 100.0	22.0 x 22.0 x 22.0
Grid Steps [mm]	10.0 x 10.0	4.0 x 4.0 x 1.4
Sensor Surface [mm]	3.0	1.4
Graded Grid	N/A	Yes
Grading Ratio	N/A	1.4
MAIA	Y	Y
Surface Detection	All points	All points
Scan Method	Measured	Measured

Measurement Results

	Area Scan	Zoom Scan
Date	2024-07-05, 18:41	2024-07-05, 19:03
psSAR1g [W/kg]	0.109	0.099
psSAR10g [W/kg]	0.040	0.028
Power Drift [dB]	-0.06	-0.17
Power Scaling	Disabled	Disabled
Scaling Factor [dB]		
TSL Correction	Positive	Positive
M2/M1 [%]		56.3
Dist 3dB Peak [mm]		9.0



Measurement Report for LWR-1050, EDGE RIGHT, WLAN U-NII-1, 802.11n20, Channel 48 (5240.000MHz)

Device under Test Properties

Model, Manufacturer	Dimensions [mm]	DUT Type
LWR-1050, Listen Technologies	95.7 x 50.0 x 15.9	Wireless Audio Receiver

Exposure Conditions

Phantom Section, TSL	Position, Test Distance [mm]	Band	Frequency [MHz], Channel Number	Conversion Factor	TSL Conductivity [S/m]	TSL Permittivity
Flat, HSL	EDGE RIGHT, 0.00	U-NII-1	5240.000, 48	5.0	4.28	33.5

Hardware Setup

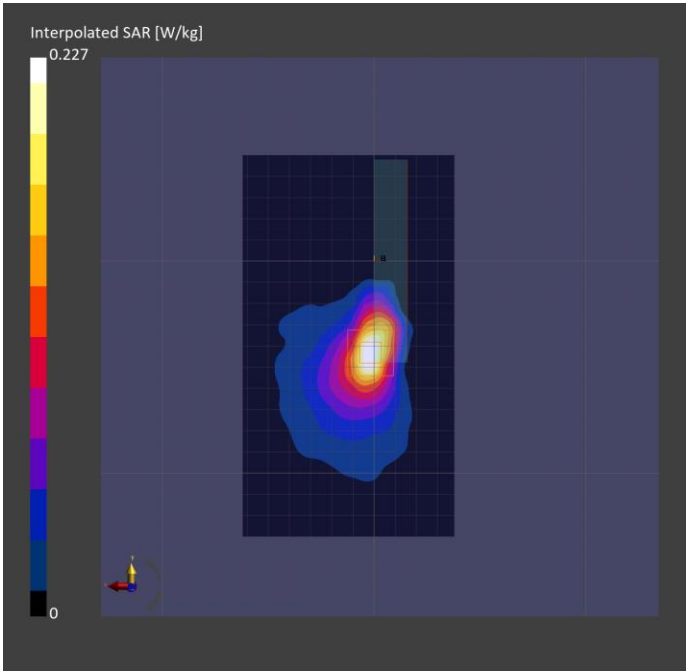
Phantom	TSL, Measured Date	Probe, Calibration Date	DAE, Calibration Date
ELI V8.0 (20deg probe tilt) - 2191	HBBL-600-10000 SLAAHU16BC221222-1, 2024-Sep-05	EX3DV4 - SN7783, 2024-04-12	DAE4 Sn1724, 2024-03-28

Scan Setup

	Area Scan	Zoom Scan
Grid Extents [mm]	100.0 x 180.0	22.0 x 22.0 x 22.0
Grid Steps [mm]	10.0 x 10.0	4.0 x 4.0 x 1.4
Sensor Surface [mm]	3.0	1.4
Graded Grid	N/A	Yes
Grading Ratio	N/A	1.4
MAIA	Y	Y
Surface Detection	All points	All points
Scan Method	Measured	Measured

Measurement Results

	Area Scan	Zoom Scan
Date	2024-09-05, 18:09	2024-09-05, 18:30
psSAR1g [W/kg]	0.163	0.156
psSAR10g [W/kg]	0.062	0.050
Power Drift [dB]	0.02	-0.07
Power Scaling	Disabled	Disabled
Scaling Factor [dB]		
TSL Correction	Positive	Positive
M2/M1 [%]		57.7
Dist 3dB Peak [mm]		7.2



5750MHz Band

Measurement Report for LWR-1050, BACK, U-NII-3, 802.11a20, Channel 149 (5745.000MHz)

Device under Test Properties

Model, Manufacturer	Dimensions [mm]	DUT Type
LWR-1050, Listen Technologies	95.7 x 50.0 x 15.9	Wi-Fi Audio Receiver

Exposure Conditions

Phantom Section, TSL	Position, Test Distance [mm]	Band	Frequency [MHz], Channel Number	Conversion Factor	TSL Conductivity [S/m]	TSL Permittivity
Flat, HSL	BACK, 0.00	U-NII-3	5745.000, 149	4.52	4.95	32.0

Hardware Setup

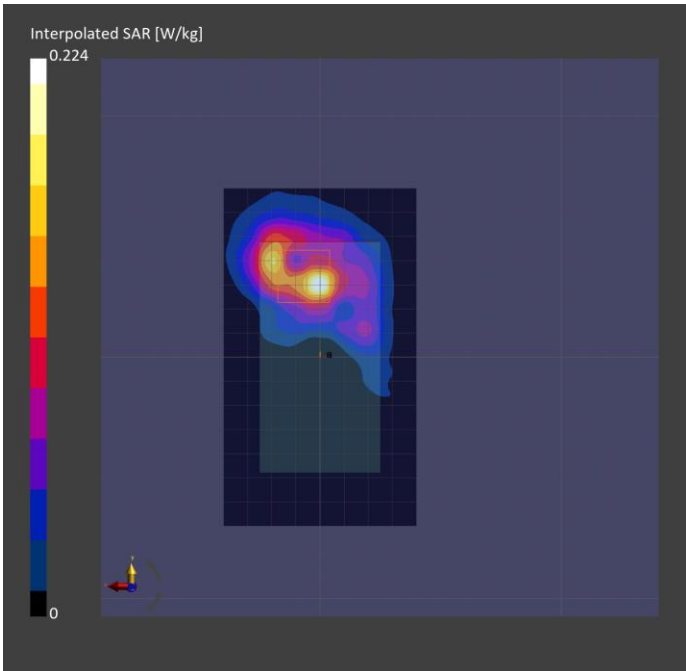
Phantom	TSL, Measured Date	Probe, Calibration Date	DAE, Calibration Date
ELI V8.0 (20deg probe tilt) - 2191	HBBL-600-10000 SLAAHU16BC221222-1, 2024-Jul-09	EX3DV4 - SN7783, 2024-04-12	DAE4 Sn1724, 2024-03-28

Scan Setup

	Area Scan	Zoom Scan
Grid Extents [mm]	80.0 x 140.0	22.0 x 22.0 x 22.0
Grid Steps [mm]	10.0 x 10.0	4.0 x 4.0 x 1.4
Sensor Surface [mm]	3.0	1.4
Graded Grid	N/A	Yes
Grading Ratio	N/A	1.4
MAIA	Y	Y
Surface Detection	All points	All points
Scan Method	Measured	Measured

Measurement Results

	Area Scan	Zoom Scan
Date	2024-07-09, 20:32	2024-07-09, 21:08
psSAR1g [W/kg]	0.140	0.143
psSAR10g [W/kg]	0.047	0.032
Power Drift [dB]	0.10	0.12
Power Scaling	Disabled	Disabled
Scaling Factor [dB]		
TSL Correction	Positive	Positive
M2/M1 [%]		55.9
Dist 3dB Peak [mm]		5.8



Measurement Report for LWR-1050, FRONT, U-NII-3, 802.11a20, Channel 149 (5745.000MHz)

Device under Test Properties

Model, Manufacturer	Dimensions [mm]	DUT Type
LWR-1050, Listen Technologies	95.7 x 50.0 x 15.9	Wi-Fi Audio Receiver

Exposure Conditions

Phantom Section, TSL	Position, Test Distance [mm]	Band	Frequency [MHz], Channel Number	Conversion Factor	TSL Conductivity [S/m]	TSL Permittivity
Flat, HSL	FRONT, 0.00	U-NII-3	5745.000, 149	4.52	5.04	34.4

Hardware Setup

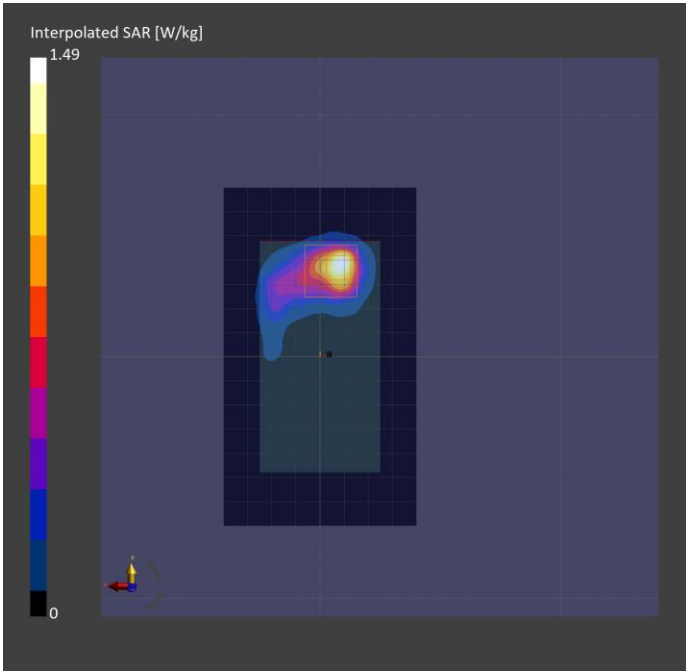
Phantom	TSL, Measured Date	Probe, Calibration Date	DAE, Calibration Date
ELI V8.0 (20deg probe tilt) - 2191	HBBL-600-10000 SLAAHU16BC221222-1, 2024-Jul-08	EX3DV4 - SN7783, 2024-04-12	DAE4 Sn1724, 2024-03-28

Scan Setup

	Area Scan	Zoom Scan
Grid Extents [mm]	80.0 x 140.0	22.0 x 22.0 x 22.0
Grid Steps [mm]	10.0 x 10.0	4.0 x 4.0 x 1.4
Sensor Surface [mm]	3.0	1.4
Graded Grid	N/A	Yes
Grading Ratio	N/A	1.4
MAIA	Y	N/A
Surface Detection	All points	All points
Scan Method	Measured	Measured

Measurement Results

	Area Scan	Zoom Scan
Date	2024-07-08, 20:34	2024-07-08, 21:14
psSAR1g [W/kg]	1.00	1.28
psSAR10g [W/kg]	0.313	0.318
Power Drift [dB]	-0.08	-0.01
Power Scaling	Disabled	Disabled
Scaling Factor [dB]		
TSL Correction	Positive	Positive
M2/M1 [%]		58.4
Dist 3dB Peak [mm]		5.7





Measurement Report for LWR-1050, FRONT, U-NII-3, 802.11a20, Channel 165 (5825.000MHz)

Device under Test Properties

Model, Manufacturer	Dimensions [mm]	DUT Type
LWR-1050, Listen Technologies	95.7 x 50.0 x 15.9	Wi-Fi Audio Receiver

Exposure Conditions

Phantom Section, TSL	Position, Test Distance [mm]	Band	Frequency [MHz], Channel Number	Conversion Factor	TSL Conductivity [S/m]	TSL Permittivity
Flat, HSL	FRONT, 0.00	U-NII-3	5825.000, 165	4.52	5.13	34.2

Hardware Setup

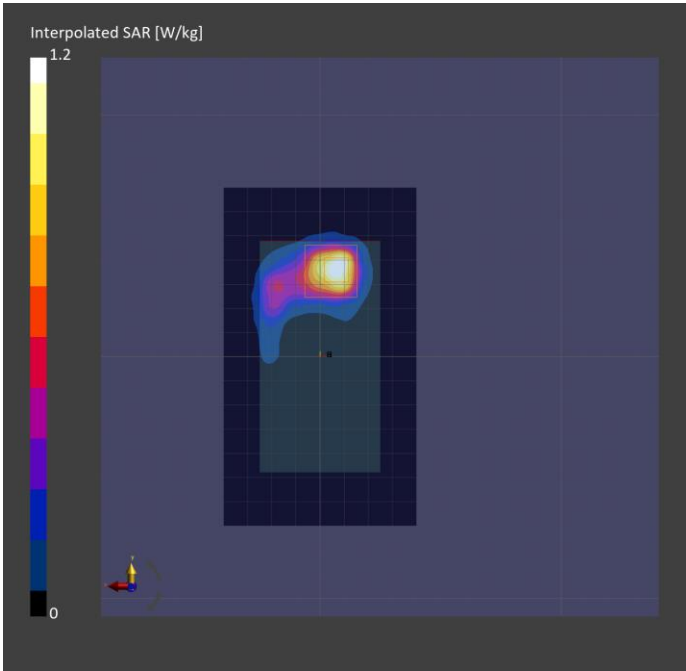
Phantom	TSL, Measured Date	Probe, Calibration Date	DAE, Calibration Date
ELI V8.0 (20deg probe tilt) - 2191	HBBL-600-10000 SLAAHU16BC221222-1, 2024-Jul-08	EX3DV4 - SN7783, 2024-04-12	DAE4 Sn1724, 2024-03-28

Scan Setup

	Area Scan	Zoom Scan
Grid Extents [mm]	80.0 x 140.0	22.0 x 22.0 x 22.0
Grid Steps [mm]	10.0 x 10.0	4.0 x 4.0 x 1.4
Sensor Surface [mm]	3.0	1.4
Graded Grid	N/A	Yes
Grading Ratio	N/A	1.4
MAIA	Y	N/A
Surface Detection	All points	All points
Scan Method	Measured	Measured

Measurement Results

	Area Scan	Zoom Scan
Date	2024-07-08, 21:35	2024-07-08, 21:49
psSAR1g [W/kg]	0.880	1.24
psSAR10g [W/kg]	0.285	0.302
Power Drift [dB]	0.01	-0.03
Power Scaling	Disabled	Disabled
Scaling Factor [dB]		
TSL Correction	Positive	Positive
M2/M1 [%]		57.7
Dist 3dB Peak [mm]		5.6



Measurement Report for LWR-1050, EDGE BOTTOM, U-NII-3, 802.11a20, Channel 149 (5745.000MHz)

Device under Test Properties

Model, Manufacturer	Dimensions [mm]	DUT Type
LWR-1050, Listen Technologies	95.7 x 50.0 x 15.9	Wi-Fi Audio Receiver

Exposure Conditions

Phantom Section, TSL	Position, Test Distance [mm]	Band	Frequency [MHz], Channel Number	Conversion Factor	TSL Conductivity [S/m]	TSL Permittivity
Flat, HSL	EDGE BOTTOM, 0.00	U-NII-3	5745.000, 149	4.52	5.04	34.4

Hardware Setup

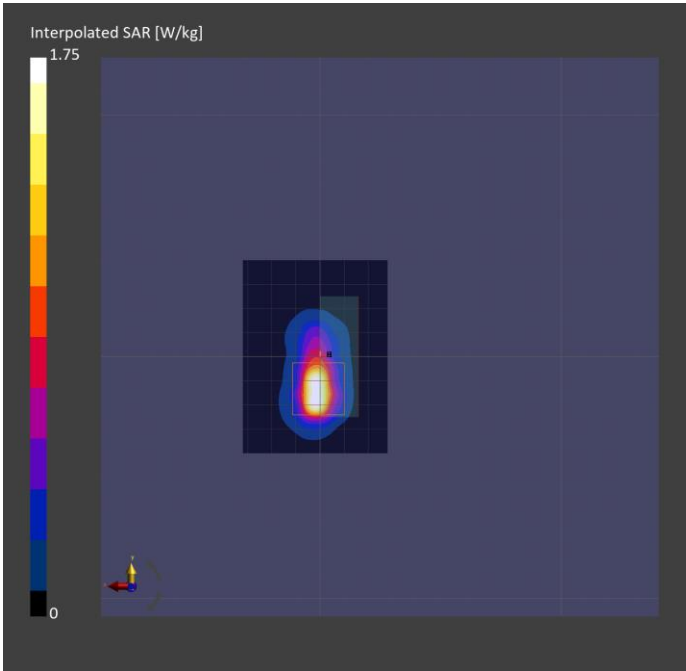
Phantom	TSL, Measured Date	Probe, Calibration Date	DAE, Calibration Date
ELI V8.0 (20deg probe tilt) - 2191	HBBL-600-10000 SLAAHU16BC221222-1, 2024-Jul-08	EX3DV4 - SN7783, 2024-04-12	DAE4 Sn1724, 2024-03-28

Scan Setup

	Area Scan	Zoom Scan
Grid Extents [mm]	60.0 x 80.0	22.0 x 22.0 x 22.0
Grid Steps [mm]	10.0 x 10.0	4.0 x 4.0 x 1.4
Sensor Surface [mm]	3.0	1.4
Graded Grid	N/A	Yes
Grading Ratio	N/A	1.4
MAIA	N/A	N/A
Surface Detection	All points	All points
Scan Method	Measured	Measured

Measurement Results

	Area Scan	Zoom Scan
Date	2024-07-08, 17:55	2024-07-08, 18:11
psSAR1g [W/kg]	1.20	1.49
psSAR10g [W/kg]	0.353	0.370
Power Drift [dB]	-0.15	-0.11
Power Scaling	Disabled	Disabled
Scaling Factor [dB]		
TSL Correction	Positive	Positive
M2/M1 [%]		58.9
Dist 3dB Peak [mm]		5.6



Measurement Report for LWR-1050, EDGE BOTTOM, U-NII-3, 802.11a20, Channel 165 (5825.000MHz)

Device under Test Properties

Model, Manufacturer	Dimensions [mm]	DUT Type
LWR-1050, Listen Technologies	95.7 x 50.0 x 15.9	Wi-Fi Audio Receiver

Exposure Conditions

Phantom Section, TSL	Position, Test Distance [mm]	Band	Frequency [MHz], Channel Number	Conversion Factor	TSL Conductivity [S/m]	TSL Permittivity
Flat, HSL	EDGE BOTTOM, 0.00	U-NII-3	5825.000, 165	4.52	5.13	34.2

Hardware Setup

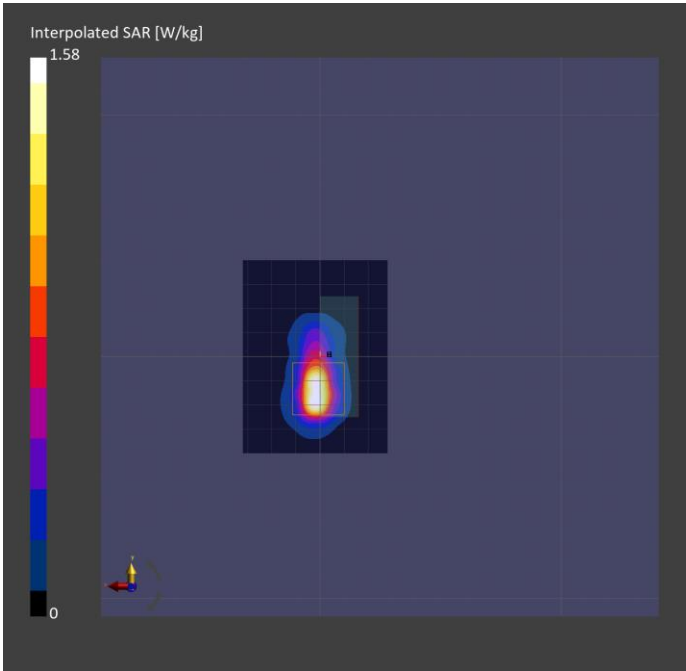
Phantom	TSL, Measured Date	Probe, Calibration Date	DAE, Calibration Date
ELI V8.0 (20deg probe tilt) - 2191	HBBL-600-10000 SLAAHU16BC221222-1, 2024-Jul-08	EX3DV4 - SN7783, 2024-04-12	DAE4 Sn1724, 2024-03-28

Scan Setup

	Area Scan	Zoom Scan
Grid Extents [mm]	60.0 x 80.0	22.0 x 22.0 x 22.0
Grid Steps [mm]	10.0 x 10.0	4.0 x 4.0 x 1.4
Sensor Surface [mm]	3.0	1.4
Graded Grid	N/A	Yes
Grading Ratio	N/A	1.4
MAIA	Y	Y
Surface Detection	All points	All points
Scan Method	Measured	Measured

Measurement Results

	Area Scan	Zoom Scan
Date	2024-07-08, 18:26	2024-07-08, 19:08
psSAR1g [W/kg]	1.08	1.213
psSAR10g [W/kg]	0.307	0.305
Power Drift [dB]	-0.11	-0.11
Power Scaling	Disabled	Disabled
Scaling Factor [dB]		
TSL Correction	Positive	Positive
M2/M1 [%]		62.5
Dist 3dB Peak [mm]		2.3



Measurement Report for LWR-1050, EDGE LEFT, U-NII-3, 802.11a20, Channel 149 (5745.000MHz)

Device under Test Properties

Model, Manufacturer	Dimensions [mm]	DUT Type
LWR-1050, Listen Technologies	95.7 x 50.0 x 15.9	Wi-Fi Audio Receiver

Exposure Conditions

Phantom Section, TSL	Position, Test Distance [mm]	Band	Frequency [MHz], Channel Number	Conversion Factor	TSL Conductivity [S/m]	TSL Permittivity
Flat, HSL	EDGE LEFT, 0.00	U-NII-3	5745.000, 149	4.52	4.95	32.0

Hardware Setup

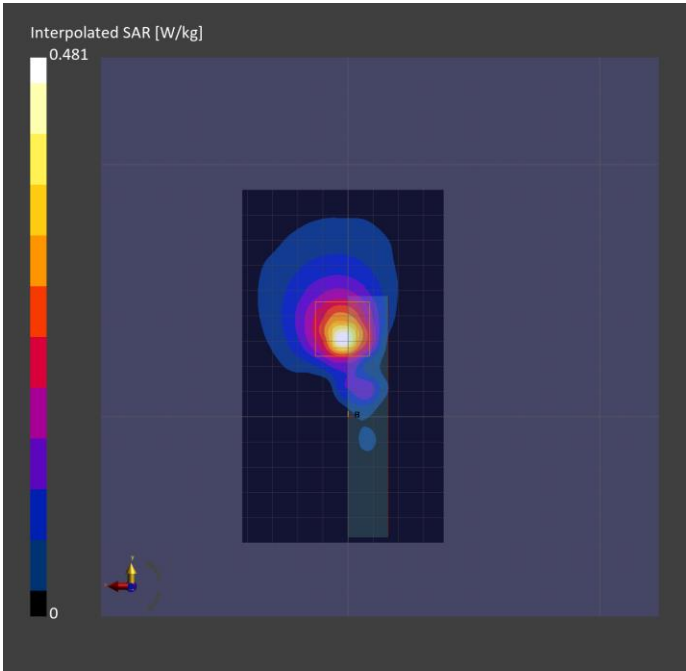
Phantom	TSL, Measured Date	Probe, Calibration Date	DAE, Calibration Date
ELI V8.0 (20deg probe tilt) - 2191	HBBL-600-10000 SLAAHU16BC221222-1, 2024-Jul-09	EX3DV4 - SN7783, 2024-04-12	DAE4 Sn1724, 2024-03-28

Scan Setup

	Area Scan	Zoom Scan
Grid Extents [mm]	80.0 x 140.0	22.0 x 22.0 x 22.0
Grid Steps [mm]	10.0 x 10.0	4.0 x 4.0 x 1.4
Sensor Surface [mm]	3.0	1.4
Graded Grid	N/A	Yes
Grading Ratio	N/A	1.4
MAIA	Y	Y
Surface Detection	All points	All points
Scan Method	Measured	Measured

Measurement Results

	Area Scan	Zoom Scan
Date	2024-07-09, 18:15	2024-07-09, 18:36
psSAR1g [W/kg]	0.311	0.280
psSAR10g [W/kg]	0.105	0.091
Power Drift [dB]	0.18	-0.06
Power Scaling	Disabled	Disabled
Scaling Factor [dB]		
TSL Correction	Positive	Positive
M2/M1 [%]		55.7
Dist 3dB Peak [mm]		7.2



Measurement Report for LWR-1050, EDGE LEFT, U-NII-3, 802.11a20, Channel 165 (5825.000MHz)

Device under Test Properties

Model, Manufacturer	Dimensions [mm]	DUT Type
LWR-1050, Listen Technologies	95.7 x 50.0 x 15.9	Wi-Fi Audio Receiver

Exposure Conditions

Phantom Section, TSL	Position, Test Distance [mm]	Band	Frequency [MHz], Channel Number	Conversion Factor	TSL Conductivity [S/m]	TSL Permittivity
Flat, HSL	EDGE LEFT, 0.00	U-NII-3	5825.000, 165	4.52	5.03	31.8

Hardware Setup

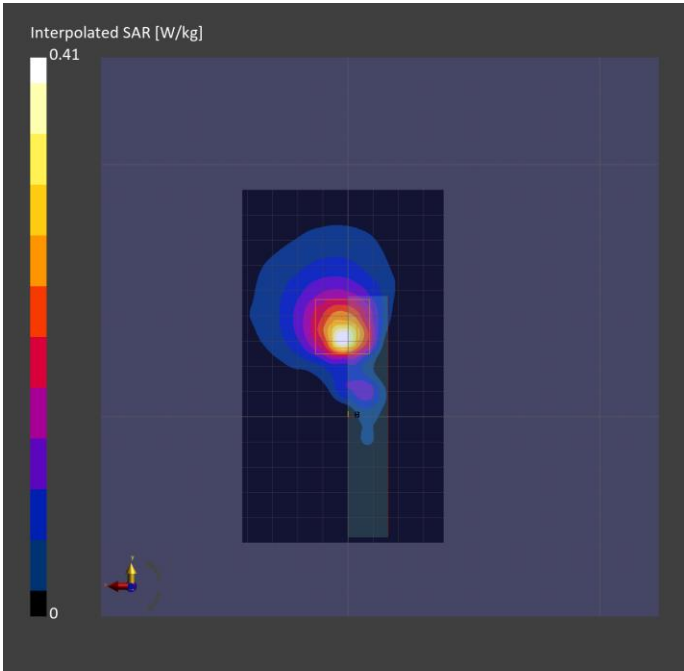
Phantom	TSL, Measured Date	Probe, Calibration Date	DAE, Calibration Date
ELI V8.0 (20deg probe tilt) - 2191	HBBL-600-10000 SLAAHU16BC221222-1, 2024-Jul-09	EX3DV4 - SN7783, 2024-04-12	DAE4 Sn1724, 2024-03-28

Scan Setup

	Area Scan	Zoom Scan
Grid Extents [mm]	80.0 x 140.0	22.0 x 22.0 x 22.0
Grid Steps [mm]	10.0 x 10.0	4.0 x 4.0 x 1.4
Sensor Surface [mm]	3.0	1.4
Graded Grid	N/A	Yes
Grading Ratio	N/A	1.4
MAIA	Y	Y
Surface Detection	All points	All points
Scan Method	Measured	Measured

Measurement Results

	Area Scan	Zoom Scan
Date	2024-07-09, 18:54	2024-07-09, 19:11
psSAR1g [W/kg]	0.267	0.269
psSAR10g [W/kg]	0.090	0.083
Power Drift [dB]	0.13	-0.04
Power Scaling	Disabled	Disabled
Scaling Factor [dB]		
TSL Correction	Positive	Positive
M2/M1 [%]		56.6
Dist 3dB Peak [mm]		6.5



Measurement Report for LWR-1050, EDGE RIGHT, U-NII-3, 802.11a20, Channel 149 (5745.000MHz)

Device under Test Properties

Model, Manufacturer	Dimensions [mm]	DUT Type
LWR-1050, Listen Technologies	95.7 x 50.0 x 15.9	Wi-Fi Audio Receiver

Exposure Conditions

Phantom Section, TSL	Position, Test Distance [mm]	Band	Frequency [MHz], Channel Number	Conversion Factor	TSL Conductivity [S/m]	TSL Permittivity
Flat, HSL	EDGE RIGHT, 0.00	WLAN 5GHz	5745.000, 149	4.55	4.88	33.2

Hardware Setup

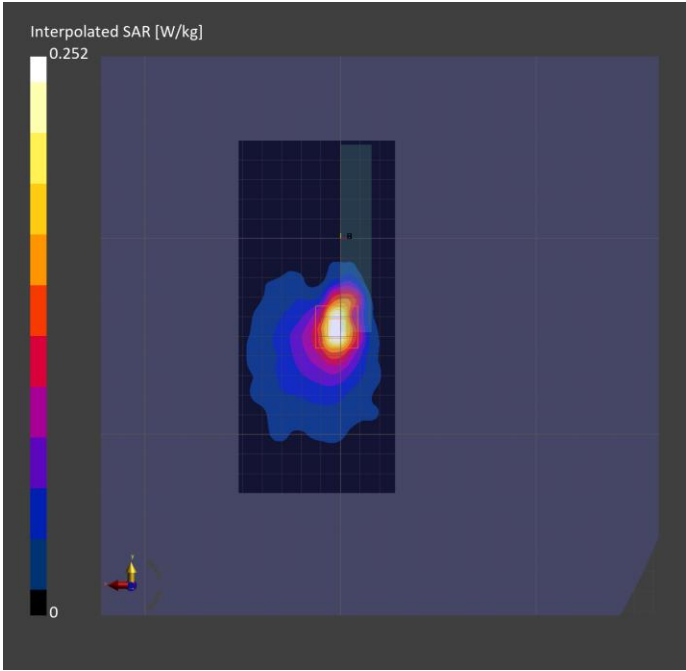
Phantom	TSL, Measured Date	Probe, Calibration Date	DAE, Calibration Date
ELI V8.0 (20deg probe tilt) - 2191	HBBL-600-10000 SLAAHU16BC221222-1, 2024-Sep-05	EX3DV4 - SN7783, 2024-04-12	DAE4 Sn1724, 2024-03-28

Scan Setup

	Area Scan	Zoom Scan
Grid Extents [mm]	80.0 x 180.0	22.0 x 22.0 x 22.0
Grid Steps [mm]	10.0 x 10.0	4.0 x 4.0 x 1.4
Sensor Surface [mm]	3.0	1.4
Graded Grid	N/A	Yes
Grading Ratio	N/A	1.4
MAIA	Y	Y
Surface Detection	All points	All points
Scan Method	Measured	Measured

Measurement Results

	Area Scan	Zoom Scan
Date	2024-09-05, 21:05	2024-09-05, 21:22
psSAR1g [W/kg]	0.182	0.166
psSAR10g [W/kg]	0.065	0.048
Power Drift [dB]	0.09	-0.07
Power Scaling	Disabled	Disabled
Scaling Factor [dB]		
TSL Correction	Positive	Positive
M2/M1 [%]		52.2
Dist 3dB Peak [mm]		6.4



Measurement Report for LWR-1050, EDGE BOTTOM, U-NII-3, 802.11a20, Channel 149 (5745.000MHz), REPEAT

Device under Test Properties

Model, Manufacturer	Dimensions [mm]	DUT Type
LWR-1050, Listen Technologies	95.7 x 50.0 x 15.9	Wi-Fi Audio Receiver

Exposure Conditions

Phantom Section, TSL	Position, Test Distance [mm]	Band	Frequency [MHz], Channel Number	Conversion Factor	TSL Conductivity [S/m]	TSL Permittivity
Flat, HSL	EDGE BOTTOM, 0.00	U-NII-3	5745.000, 149	4.52	4.90	32.1

Hardware Setup

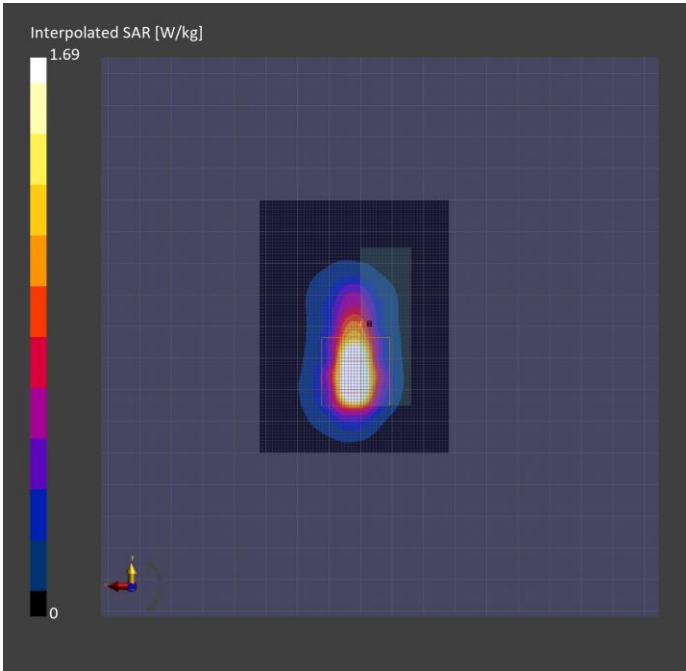
Phantom	TSL, Measured Date	Probe, Calibration Date	DAE, Calibration Date
ELI V8.0 (20deg probe tilt) - 2191	HBBL-600-10000 SLAAHU16BC221222-1, 2024-Jul-10	EX3DV4 - SN7783, 2024-04-12	DAE4 Sn1724, 2024-03-28

Scan Setup

	Area Scan	Zoom Scan
Grid Extents [mm]	60.0 x 80.0	22.0 x 22.0 x 22.0
Grid Steps [mm]	10.0 x 10.0	4.0 x 4.0 x 1.4
Sensor Surface [mm]	3.0	1.4
Graded Grid	N/A	Yes
Grading Ratio	N/A	1.4
MAIA	N/A	N/A
Surface Detection	All points	All points
Scan Method	Measured	Measured

Measurement Results

	Area Scan	Zoom Scan
Date	2024-07-10, 18:43	2024-07-10, 19:21
psSAR1g [W/kg]	1.29	1.431
psSAR10g [W/kg]	0.358	0.361
Power Drift [dB]	-0.18	-0.14
Power Scaling	Disabled	Disabled
Scaling Factor [dB]		
TSL Correction	Positive	Positive
M2/M1 [%]		59.3
Dist 3dB Peak [mm]		5.6



Measurement Report for LWR-1050, BACK, U-NII-3, 802.11n20, Channel 149 (5745.000MHz)

Device under Test Properties

Model, Manufacturer	Dimensions [mm]	DUT Type
LWR-1050, Listen Technologies	95.7 x 50.0 x 15.9	Wi-Fi Audio Receiver

Exposure Conditions

Phantom Section, TSL	Position, Test Distance [mm]	Band	Frequency [MHz], Channel Number	Conversion Factor	TSL Conductivity [S/m]	TSL Permittivity
Flat, HSL	BACK, 0.00	U-NII-3	5745.000, 149	4.52	4.90	32.1

Hardware Setup

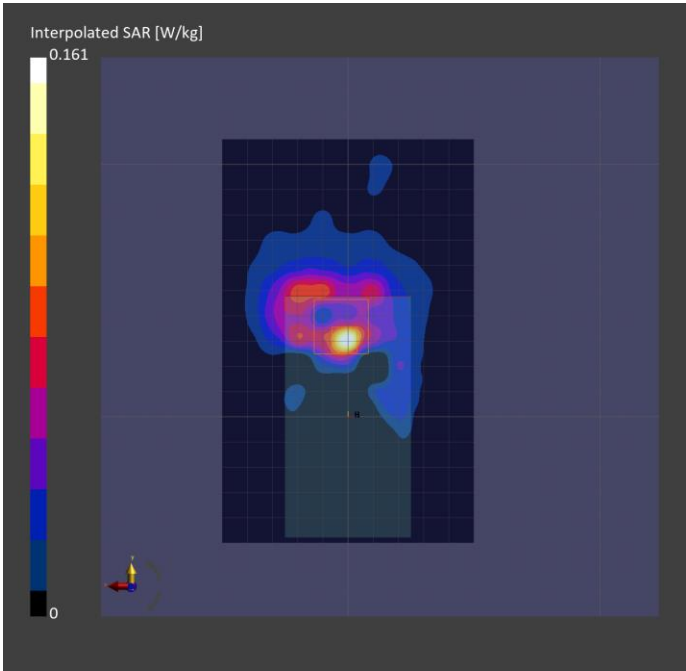
Phantom	TSL, Measured Date	Probe, Calibration Date	DAE, Calibration Date
ELI V8.0 (20deg probe tilt) - 2191	HBBL-600-10000 SLAAHU16BC221222-1, 2024-Jul-10	EX3DV4 - SN7783, 2024-04-12	DAE4 Sn1724, 2024-03-28

Scan Setup

	Area Scan	Zoom Scan
Grid Extents [mm]	100.0 x 160.0	22.0 x 22.0 x 22.0
Grid Steps [mm]	10.0 x 10.0	4.0 x 4.0 x 1.4
Sensor Surface [mm]	3.0	1.4
Graded Grid	N/A	Yes
Grading Ratio	N/A	1.4
MAIA	Y	Y
Surface Detection	All points	All points
Scan Method	Measured	Measured

Measurement Results

	Area Scan	Zoom Scan
Date	2024-07-10, 16:08	2024-07-10, 17:29
psSAR1g [W/kg]	0.095	0.075
psSAR10g [W/kg]	0.027	0.008
Power Drift [dB]	-0.18	-0.14
Power Scaling	Disabled	Disabled
Scaling Factor [dB]		
TSL Correction	Positive	Positive
M2/M1 [%]		51.2
Dist 3dB Peak [mm]		5.7





Measurement Report for LWR-1050, FRONT, U-NII-3, 802.11n20, Channel 149 (5745.000MHz)

Device under Test Properties

Model, Manufacturer	Dimensions [mm]	DUT Type
LWR-1050, Listen Technologies	95.7 x 50.0 x 15.9	Wi-Fi Audio Receiver

Exposure Conditions

Phantom Section, TSL	Position, Test Distance [mm]	Band	Frequency [MHz], Channel Number	Conversion Factor	TSL Conductivity [S/m]	TSL Permittivity
Flat, HSL	FRONT, 0.00	U-NII-3	5745.000, 149	4.52	5.04	34.4

Hardware Setup

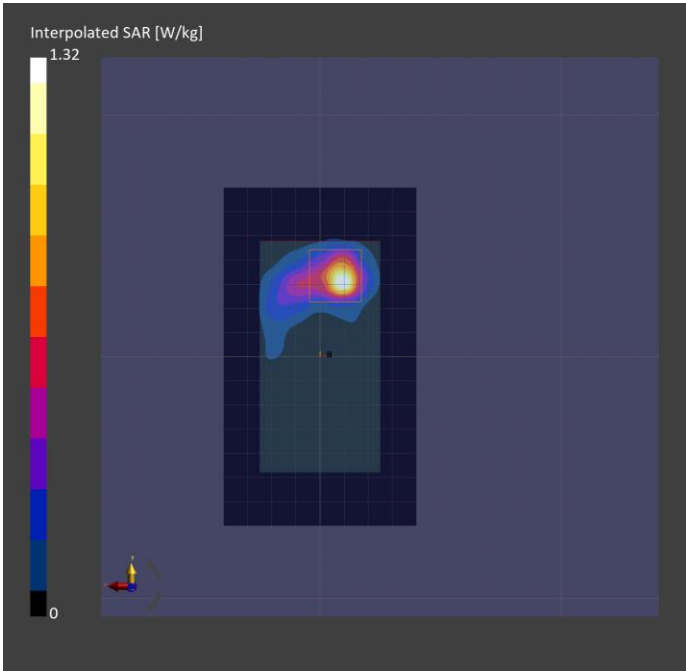
Phantom	TSL, Measured Date	Probe, Calibration Date	DAE, Calibration Date
ELI V8.0 (20deg probe tilt) - 2191	HBBL-600-10000 SLAAHU16BC221222-1, 2024-Jul-08	EX3DV4 - SN7783, 2024-04-12	DAE4 Sn1724, 2024-03-28

Scan Setup

	Area Scan	Zoom Scan
Grid Extents [mm]	80.0 x 140.0	22.0 x 22.0 x 22.0
Grid Steps [mm]	10.0 x 10.0	4.0 x 4.0 x 1.4
Sensor Surface [mm]	3.0	1.4
Graded Grid	N/A	Yes
Grading Ratio	N/A	1.4
MAIA	Y	N/A
Surface Detection	All points	All points
Scan Method	Measured	Measured

Measurement Results

	Area Scan	Zoom Scan
Date	2024-07-08, 22:10	2024-07-08, 22:54
psSAR1g [W/kg]	0.828	1.01
psSAR10g [W/kg]	0.243	0.248
Power Drift [dB]	-0.08	-0.01
Power Scaling	Disabled	Disabled
Scaling Factor [dB]		
TSL Correction	Positive	Positive
M2/M1 [%]		57.6
Dist 3dB Peak [mm]		5.7



Measurement Report for LWR-1050, FRONT, U-NII-3, 802.11n20, Channel 165 (5825.000MHz)

Device under Test Properties

Model, Manufacturer	Dimensions [mm]	DUT Type
LWR-1050, Listen Technologies	95.7 x 50.0 x 15.9	Wi-Fi Audio Receiver

Exposure Conditions

Phantom Section, TSL	Position, Test Distance [mm]	Band	Frequency [MHz], Channel Number	Conversion Factor	TSL Conductivity [S/m]	TSL Permittivity
Flat, HSL	FRONT, 0.00	U-NII-3	5825.000, 165	4.52	5.03	31.8

Hardware Setup

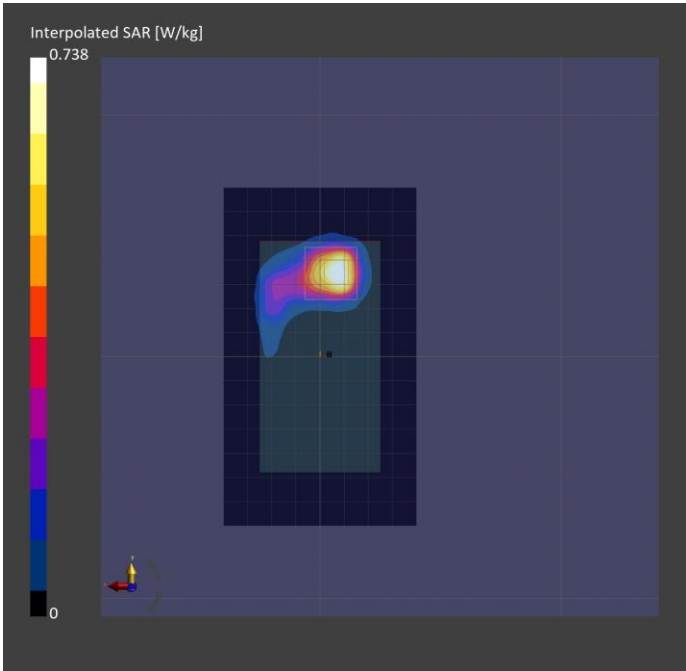
Phantom	TSL, Measured Date	Probe, Calibration Date	DAE, Calibration Date
ELI V8.0 (20deg probe tilt) - 2191	HBBL-600-10000 SLAAHU16BC221222-1, 2024-Jul-09	EX3DV4 - SN7783, 2024-04-12	DAE4 Sn1724, 2024-03-28

Scan Setup

	Area Scan	Zoom Scan
Grid Extents [mm]	80.0 x 140.0	22.0 x 22.0 x 22.0
Grid Steps [mm]	10.0 x 10.0	4.0 x 4.0 x 1.4
Sensor Surface [mm]	3.0	1.4
Graded Grid	N/A	Yes
Grading Ratio	N/A	1.4
MAIA	Y	N/A
Surface Detection	All points	All points
Scan Method	Measured	Measured

Measurement Results

	Area Scan	Zoom Scan
Date	2024-07-09, 16:45	2024-07-09, 17:20
psSAR1g [W/kg]	0.532	0.728
psSAR10g [W/kg]	0.170	0.169
Power Drift [dB]	-0.18	0.02
Power Scaling	Disabled	Disabled
Scaling Factor [dB]		
TSL Correction	Positive	Positive
M2/M1 [%]		57.2
Dist 3dB Peak [mm]		5.4



Measurement Report for LWR-1050, EDGE BOTTOM, U-NII-3, 802.11n20, Channel 149 (5745.000MHz)

Device under Test Properties

Model, Manufacturer	Dimensions [mm]	DUT Type
LWR-1050, Listen Technologies	95.7 x 50.0 x 15.9	Wi-Fi Audio Receiver

Exposure Conditions

Phantom Section, TSL	Position, Test Distance [mm]	Band	Frequency [MHz], Channel Number	Conversion Factor	TSL Conductivity [S/m]	TSL Permittivity
Flat, HSL	EDGE BOTTOM, 0.00	U-NII-3	5745.000, 149	4.52	5.04	34.4

Hardware Setup

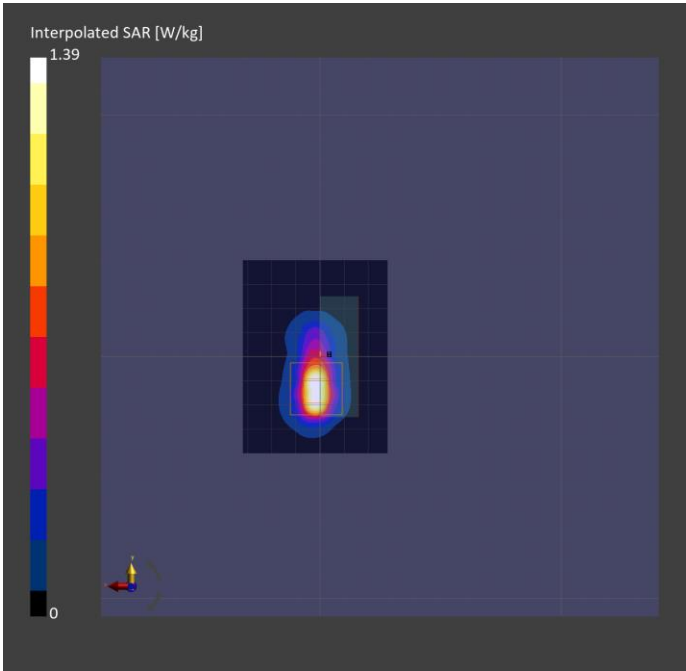
Phantom	TSL, Measured Date	Probe, Calibration Date	DAE, Calibration Date
ELI V8.0 (20deg probe tilt) - 2191	HBBL-600-10000 SLAAHU16BC221222-1, 2024-Jul-08	EX3DV4 - SN7783, 2024-04-12	DAE4 Sn1724, 2024-03-28

Scan Setup

	Area Scan	Zoom Scan
Grid Extents [mm]	60.0 x 80.0	22.0 x 22.0 x 22.0
Grid Steps [mm]	10.0 x 10.0	4.0 x 4.0 x 1.4
Sensor Surface [mm]	3.0	1.4
Graded Grid	N/A	Yes
Grading Ratio	N/A	1.4
MAIA	Y	N/A
Surface Detection	All points	All points
Scan Method	Measured	Measured

Measurement Results

	Area Scan	Zoom Scan
Date	2024-07-08, 19:24	2024-07-08, 19:40
psSAR1g [W/kg]	0.943	1.13
psSAR10g [W/kg]	0.269	0.277
Power Drift [dB]	-0.11	-0.03
Power Scaling	Disabled	Disabled
Scaling Factor [dB]		
TSL Correction	Positive	Positive
M2/M1 [%]		58.3
Dist 3dB Peak [mm]		4.8



Measurement Report for LWR-1050, EDGE BOTTOM, U-NII-3, 802.11n20, Channel 165 (5825.000MHz)

Device under Test Properties

Model, Manufacturer	Dimensions [mm]	DUT Type
LWR-1050, Listen Technologies	95.7 x 50.0 x 15.9	Wi-Fi Audio Receiver

Exposure Conditions

Phantom Section, TSL	Position, Test Distance [mm]	Band	Frequency [MHz], Channel Number	Conversion Factor	TSL Conductivity [S/m]	TSL Permittivity
Flat, HSL	EDGE BOTTOM, 0.00	U-NII-3	5825.000, 165	4.52	5.13	34.2

Hardware Setup

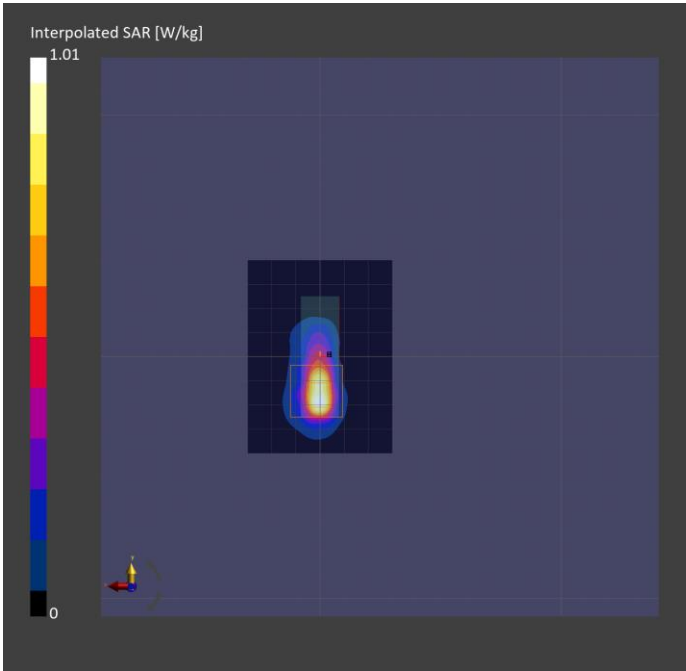
Phantom	TSL, Measured Date	Probe, Calibration Date	DAE, Calibration Date
ELI V8.0 (20deg probe tilt) - 2191	HBBL-600-10000 SLAAHU16BC221222-1, 2024-Jul-08	EX3DV4 - SN7783, 2024-04-12	DAE4 Sn1724, 2024-03-28

Scan Setup

	Area Scan	Zoom Scan
Grid Extents [mm]	60.0 x 80.0	22.0 x 22.0 x 22.0
Grid Steps [mm]	10.0 x 10.0	4.0 x 4.0 x 1.4
Sensor Surface [mm]	3.0	1.4
Graded Grid	N/A	Yes
Grading Ratio	N/A	1.4
MAIA	Y	N/A
Surface Detection	All points	All points
Scan Method	Measured	Measured

Measurement Results

	Area Scan	Zoom Scan
Date	2024-07-08, 19:55	2024-07-08, 20:09
psSAR1g [W/kg]	0.650	0.729
psSAR10g [W/kg]	0.179	0.170
Power Drift [dB]	-0.16	-0.12
Power Scaling	Disabled	Disabled
Scaling Factor [dB]		
TSL Correction	Positive	Positive
M2/M1 [%]		56.7
Dist 3dB Peak [mm]		5.6



Measurement Report for LWR-1050, EDGE LEFT, U-NII-3, 802.11n20, Channel 149 (5745.000MHz)

Device under Test Properties

Model, Manufacturer	Dimensions [mm]	DUT Type
LWR-1050, Listen Technologies	95.7 x 50.0 x 15.9	Wi-Fi Audio Receiver

Exposure Conditions

Phantom Section, TSL	Position, Test Distance [mm]	Band	Frequency [MHz], Channel Number	Conversion Factor	TSL Conductivity [S/m]	TSL Permittivity
Flat, HSL	EDGE LEFT, 0.00	U-NII-3	5745.000, 149	4.52	4.95	32.0

Hardware Setup

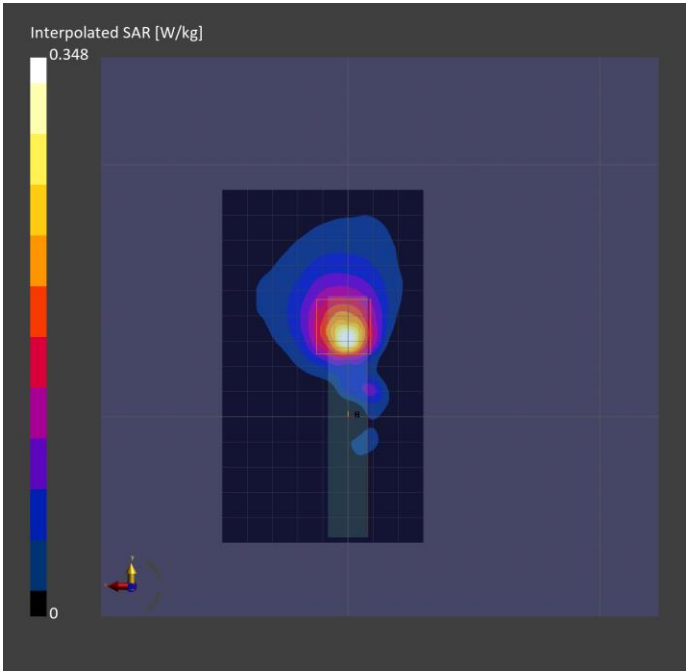
Phantom	TSL, Measured Date	Probe, Calibration Date	DAE, Calibration Date
ELI V8.0 (20deg probe tilt) - 2191	HBBL-600-10000 SLAAHU16BC221222-1, 2024-Jul-09	EX3DV4 - SN7783, 2024-04-12	DAE4 Sn1724, 2024-03-28

Scan Setup

	Area Scan	Zoom Scan
Grid Extents [mm]	80.0 x 140.0	22.0 x 22.0 x 22.0
Grid Steps [mm]	10.0 x 10.0	4.0 x 4.0 x 1.4
Sensor Surface [mm]	3.0	1.4
Graded Grid	N/A	Yes
Grading Ratio	N/A	1.4
MAIA	Y	Y
Surface Detection	All points	All points
Scan Method	Measured	Measured

Measurement Results

	Area Scan	Zoom Scan
Date	2024-07-09, 19:34	2024-07-09, 20:13
psSAR1g [W/kg]	0.224	0.220
psSAR10g [W/kg]	0.076	0.067
Power Drift [dB]	0.16	-0.04
Power Scaling	Disabled	Disabled
Scaling Factor [dB]		
TSL Correction	Positive	Positive
M2/M1 [%]		56.4
Dist 3dB Peak [mm]		6.3



Measurement Report for LWR-1050, EDGE RIGHT, U-NII-3, 802.11n20, Channel 149 (5745.000MHz)

Device under Test Properties

Model, Manufacturer	Dimensions [mm]	DUT Type
LWR-1050, Listen Technologies	95.7 x 50.0 x 15.9	Wi-Fi Audio Receiver

Exposure Conditions

Phantom Section, TSL	Position, Test Distance [mm]	Band	Frequency [MHz], Channel Number	Conversion Factor	TSL Conductivity [S/m]	TSL Permittivity
Flat, HSL	EDGE RIGHT, 0.00	U-NII-3	5745.000, 149	4.55	4.88	33.2

Hardware Setup

Phantom	TSL, Measured Date	Probe, Calibration Date	DAE, Calibration Date
ELI V8.0 (20deg probe tilt) - 2191	HBBL-600-10000 SLAAHU16BC221222-1, 2024-Sep-05	EX3DV4 - SN7783, 2024-04-12	DAE4 Sn1724, 2024-03-28

Scan Setup

	Area Scan	Zoom Scan
Grid Extents [mm]	80.0 x 180.0	22.0 x 22.0 x 22.0
Grid Steps [mm]	10.0 x 10.0	4.0 x 4.0 x 1.4
Sensor Surface [mm]	3.0	1.4
Graded Grid	N/A	Yes
Grading Ratio	N/A	1.4
MAIA	Y	Y
Surface Detection	All points	All points
Scan Method	Measured	Measured

Measurement Results

	Area Scan	Zoom Scan
Date	2024-09-05, 21:41	2024-09-05, 22:03
psSAR1g [W/kg]	0.122	0.118
psSAR10g [W/kg]	0.043	0.030
Power Drift [dB]	0.04	-0.11
Power Scaling	Disabled	Disabled
Scaling Factor [dB]		
TSL Correction	Positive	Positive
M2/M1 [%]		49.6
Dist 3dB Peak [mm]		5.9

