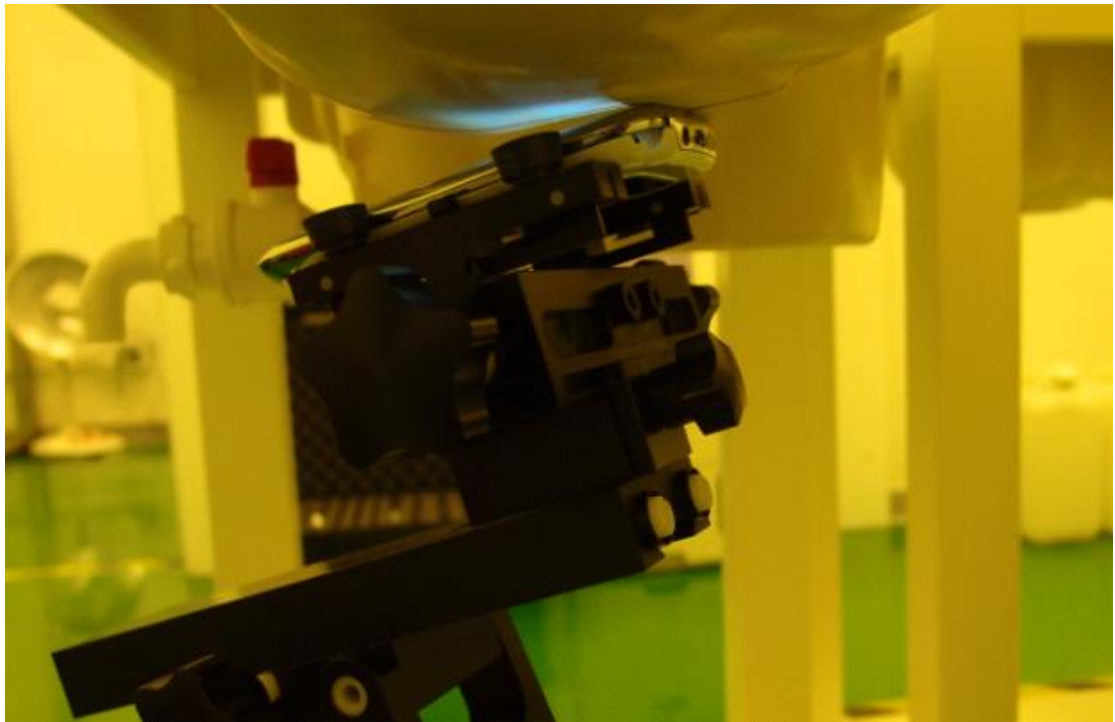


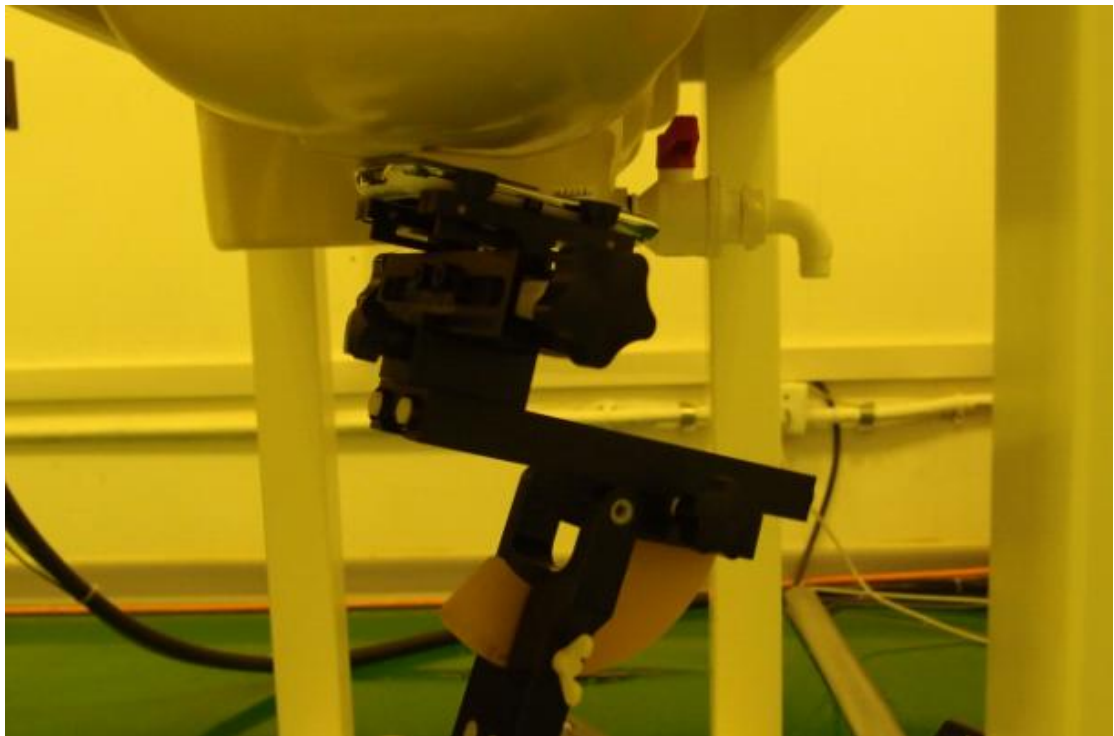
**Picture 1-1: Left Head Touch Cheek Position**



**Picture 1-2: Left Head Tilt 15° Position**



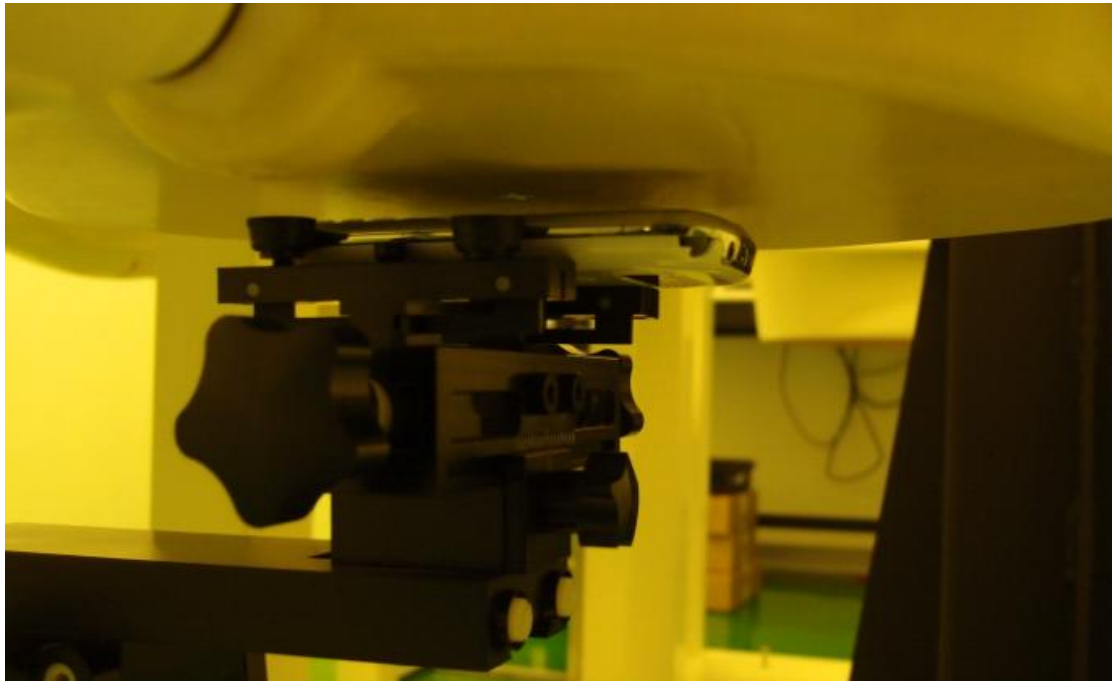
**Picture 1-3: Right Head Touch Cheek Position**



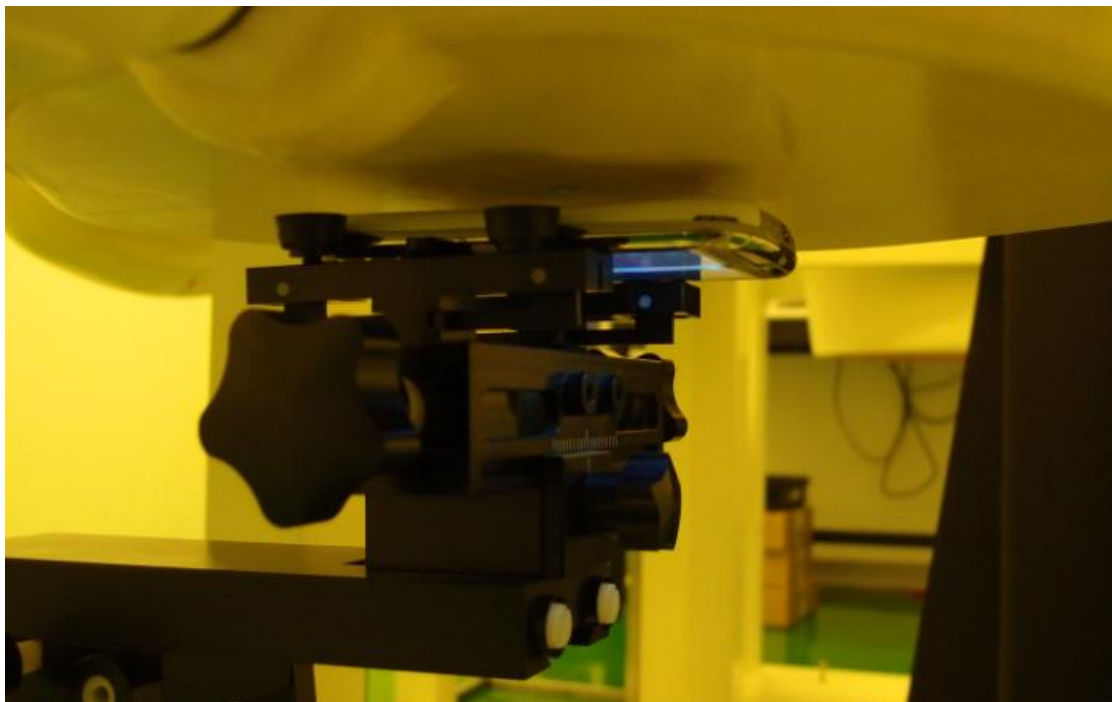
**Picture 1-4: Right Head Tilt 15° Position**

**Test positions for body:**

The Body SAR is tested at the following 2 test positions all with the distance =10mm between the EUT and the phantom bottom :



**Picture 1-5: Toward Phantom (10mm)**



**Picture 1-6: Toward Ground (10mm)**



**Picture 1-7: Constituents of the sample**