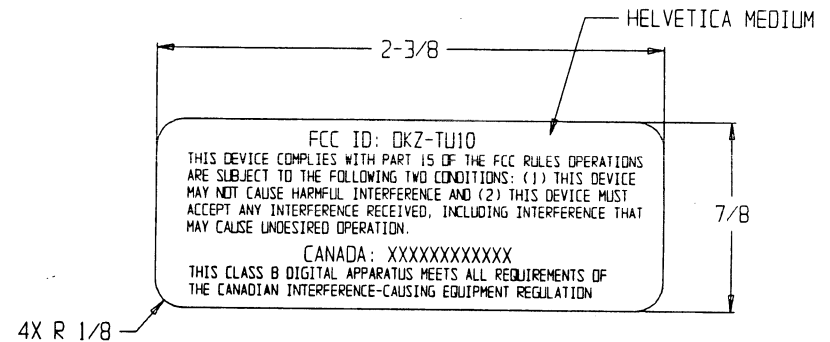


THIS PRINT IS PROPERTY OF *Barton INSTRUMENT SYSTEMS, LLC* CITY OF INDUSTRY, CA U.S.A. AND IS NOT TO BE USED AS A BASIS FOR  
MANUFACTURE OR SALE, NOR COPIED, REPRINTED OR DISCLOSED TO A THIRD PARTY EITHER WHOLLY OR IN PART WITHOUT PRIOR WRITTEN PERMISSION

REVISIONS				
REV	EO/DRN	DESCRIPTION	DATE	APPROVED
0A	XXXXX	PRELIMINARY RELEASE		



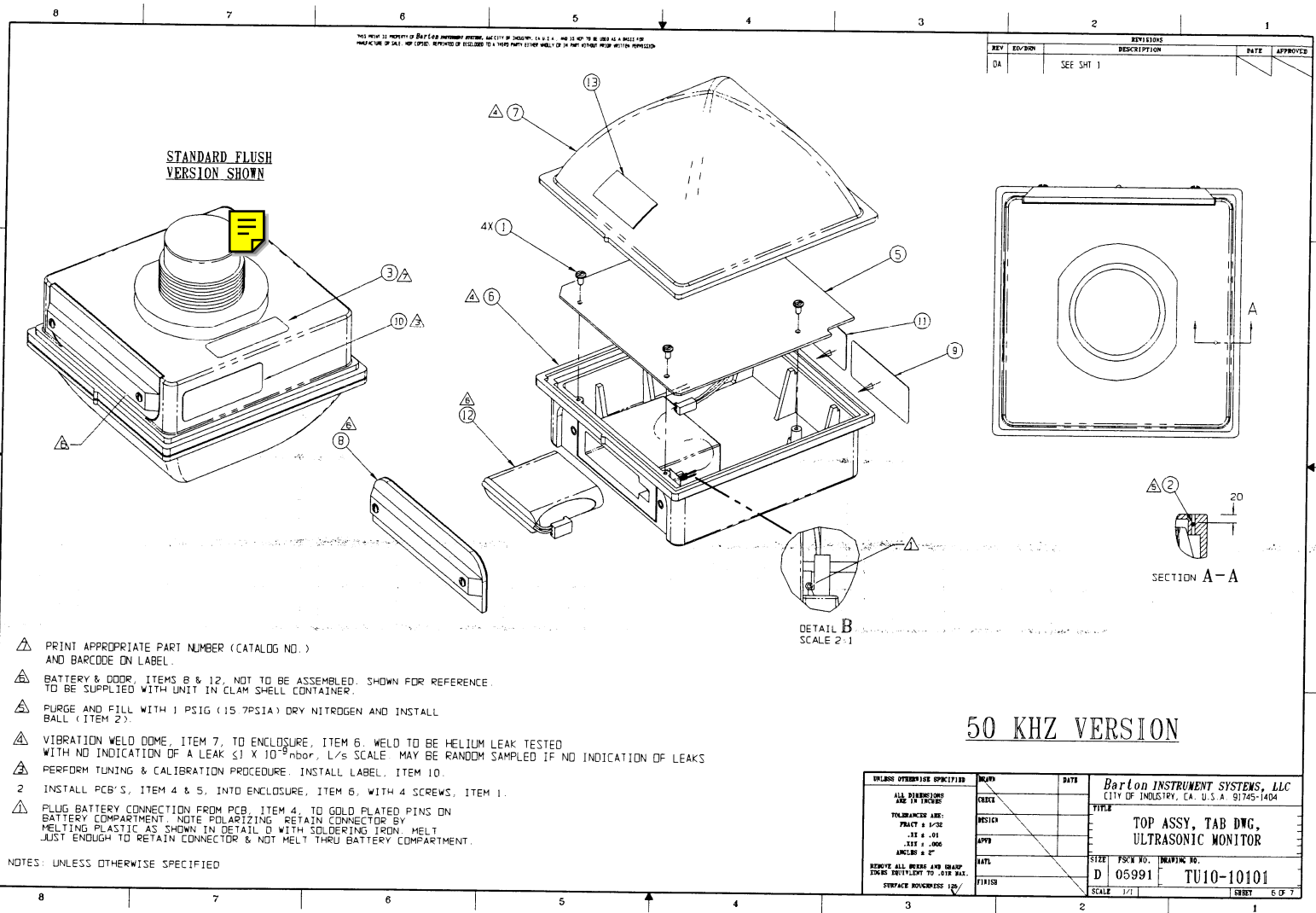
- 4 COLOR TO BE BLACK CHARACTERS ON WHITE BACKGROUND.
- 3 PROPORTION NOMINCLATURE APPROXIMATELY AS SHOWN
- 2 FURNISH IN ROLL FORM WITH PAPER BACKING

1 MATERIAL: OVERLA MINATION: 3M 7732  
LABEL: 3M 7816--CSA APPROVED.  
MAY BE PURCHASED FROM: ACCEPTED MFR LR99316

WATON LABEL PRODUCTS  
3684 FOREST PARK BLVD.  
ST. LOUIS, MO. 63108  
(314) 652-6715

NOTES: UNLESS OTHERWISE SPECIFIED

UNLESS OTHERWISE SPECIFIED	DRAWN J SHADE	DATE 08-21-10	<i>Barton INSTRUMENT SYSTEMS, LLC</i> CITY OF INDUSTRY, CA. U.S.A. 91745-1404		
	CHECK				
	DESIGN		TITLE LABEL, FCC/CANADIAN, NORTH AMERICAN		
	APVD				
ALL DIMENSIONS ARE IN INCHES TOLERANCES ARE: FRACT ± 1/32 .XX ± .01 .XXX ± .005 ANGLES ± 2° REMOVE ALL BURRS AND CHAMF EDGES EQUIVALENT TO .010 MAX. SURFACE ROUGHNESS 63	MATL	1	SIZE B	FSCM NO. 05991	DRAWING NO. TU10-1001G
	FINISH		SCALE 2/1	FILE NO 350287.PRT	SHEET 1 OF 1



- △ PRINT APPROPRIATE PART NUMBER (CATALOG NO.) AND BARCODE ON LABEL.
- △ BATTERY & DOOR, ITEMS 8 & 12, NOT TO BE ASSEMBLED. SHOWN FOR REFERENCE. TO BE SUPPLIED WITH UNIT IN CLAM SHELL CONTAINER.
- △ PURGE AND FILL WITH 1 PSIG (15.7PSIA) DRY NITROGEN AND INSTALL BALL (ITEM 2).
- △ VIBRATION WELD DOME, ITEM 7, TO ENCLOSURE, ITEM 6. WELD TO BE HELIUM LEAK TESTED WITH NO INDICATION OF A LEAK  $\leq 1 \times 10^{-9}$  mbor, L/s SCALE. MAY BE RANDOM SAMPLED IF NO INDICATION OF LEAKS.
- △ PERFORM TUNING & CALIBRATION PROCEDURE. INSTALL LABEL, ITEM 10.
- 2 INSTALL PCB'S, ITEM 4 & 5, INTO ENCLOSURE, ITEM 6, WITH 4 SCREWS, ITEM 1.
- △ PLUG BATTERY CONNECTION FROM PCB, ITEM 4, TO GOLD PLATED PINS ON BATTERY COMPARTMENT. NOTE POLARIZING. RETAIN CONNECTOR BY MELTING PLASTIC AS SHOWN IN DETAIL D WITH SOLDERING IRON. MELT JUST ENOUGH TO RETAIN CONNECTOR & NOT MELT THRU BATTERY COMPARTMENT.

UNLESS OTHERWISE SPECIFIED		DATE	Barton INSTRUMENT SYSTEMS, LLC CITY OF INDUSTRY, CA. U.S.A. 91745-1404	
ALL DIMENSIONS AND TOLERANCES UNLESS OTHERWISE SPECIFIED	CHECK	DATE	TITLE	
TOLERANCES ARE: FRACTION 1/32 DEC 0.01 ANGLES 0.2°	DESIGN	DATE	TOP ASSY, TAB DWG, ULTRASONIC MONITOR	
REMOVE ALL BORES AND CHAMFERS UNLESS NOTED TO THE MAX.	APPD	DATE	SIZE: P/SCH NO. INVENTING NO.	
SURFACE ROUGHNESS 125/	FINISH	DATE	D 05991 TU10-10101	
			SCALE 1/1	SHEET 6 OF 7