

3. Press the **RECORD/ERASE** button repeatedly until "USB REC" starts blinks in the lower left corner of the display (the information on the display varies with the playback mode when **RECORD/ERASE** button is pressed each time). Now the recording process starts.
4. Press the **STOP/PAIR** button to stop recording, and "END-REC" will appear on display. Now the recording process ends.

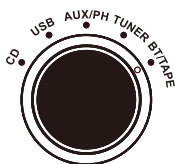
Note: If you want to listen to the latest record track, just press **◀/▶** button if it does not start to play automatically.

Erasing Files on the USB Device

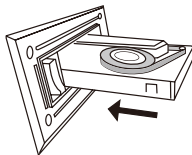
1. Insert a USB device into the **USB** port and play the song you want to delete.
2. Press and hold the **RECORD/ERASE** button for about two seconds, "ERA" with blinking, and "ONE" will appear on the display.
3. Press the **◀/▶** or **▶/▶** button to select:
 - a. ERA ONE - erase the current track
 - b. ERA FOLD - erase all the audio tracks in the entire folder
 - c. ERA ALL - erase all the audio tracks on the USB device
4. Press the **RECORD/ERASE** button again to confirm. "ERA WAIT" will appear, and erasing process starts.
5. When all tracks and folders erased, "NO SONG" will be shown on display.

CASSETTE TAPE OPERATION

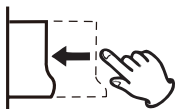
1. Set the Function knob to the **BT/TAPE** position.



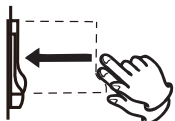
2. Insert a recorded cassette with its exposed side facing outwards. Push inwards until a CLICK sound is heard. Playback will start automatically.



3. During playback, you can lightly press and hold the **Eject/Fast Forward** button to accelerate the playing speed and release your finger when the part you want to listen to is found.

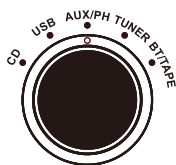


4. To stop playback and eject the tape, push the **Eject/Fast Forward** button all the way in until the tape is ejected.

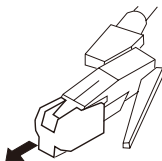


VINYL RECORD OPERATION

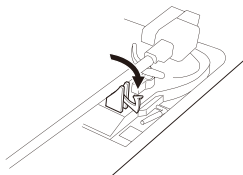
1. Press the **POWER** button to turn on the unit and open the cover.
2. Set the Function knob to **AUX/PH** position.



3. Detach the stylus protector by pressing both sides and pulling straight in the direction shown.



4. Place a vinyl record on the Turntable by aligning the Turntable Spindle to the record hole.
5. Slide the Speed Selector to 33, 45 or 78 to match the play speed of the record.
6. Unlock the Hold Down Clip.



7. Raise the Cue Lever to lift the Tonearm off the Tonearm support.
8. Gently move the Tonearm to the edge of the record (or the starting point of a track).
9. Release the Cue Lever to put the Tonearm onto the record. Turntable will begin playback.
10. Turn the **Volume** knob to adjust the volume. To pause or stop during playback, raise the Cue Lever to lift the Tonearm off the record.
11. When finished listening:
 - a. Raise the Cue Lever to lift the Tonearm off the record.
 - b. Move the Tonearm to its support.
 - c. Lower the Cue Lever to release the Tonearm.
 - d. Lock the Hold Down Clip.

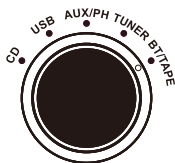
Note:

- Pull out the Aux in cable before playing a vinyl, or the unit will switch to AUX mode automatically.
- Put the 45 RPM Adapter across the Turntable Spindle firstly if playing a 45 RPM record.

BLUETOOTH® OPERATION

With the Bluetooth® In function, you can play music from an external Bluetooth® device on the speakers of your VWRP-5001.

1. Set the Function knob to **BT/TAPE** position. "BT" will blink on display.



2. Turn on your external Bluetooth device and pair with the "**VICTOR VWRP-5001**" device.
3. When the Bluetooth connection is established, you will hear a short confirmation sound from the unit, and "BT" will stop blinking on the display.
4. Start to play your favorite music on the connected device.

Note: Make sure the cassette tape not inserted in the unit, or it will be TAPE mode.

Bluetooth® Transmitter

You can play music from your VWRP-5001 on external Bluetooth® speakers, soundbar, earbuds, or headphones.

1. Disable the Bluetooth® function on all devices nearby (e.g. amplifier, soundbar, wireless headphone, smart phone, iPad).
2. Play music in the CD, AUX, Phono, USB, Tuner, or Tape mode.
3. Press and hold **PL/PA/BT OUT** button to activate Bluetooth Transmitter function. The BT OUT indicator will start to blink in blue.
4. Power on your Bluetooth® speakers or headphones and activate its Bluetooth pairing mode.
5. After a few seconds, the blinking BT OUT indicator turns to solid blue, and a beep will be heard, which means your turntable will connect automatically.
6. To change volume playback, adjust the volume on your Bluetooth® device.
7. To turn off BT OUT mode, press and hold the **PL/PA/BT OUT** button again. The BT OUT indicator will be turned off.

CARE & MAINTENANCE

Always keep the turntable clean. If the surface of the unit gets dirty, wipe with a soft dry cloth or use a diluted mild liquid soap. Be sure to remove any excess liquid completely. Do not use thinner, benzene or alcohol as they may damage the surface of the unit. Allow the surface of the unit to dry completely before using.

Beware of condensation

When the unit (or a record/disc) is moved from a cold to warm place, or used after a sudden temperature change, condensation may form; vapor in the air could condense on the internal mechanism, making correct operation erratic or impossible. To prevent this, or if this occurs, leave the unit turned off for one or two hours. The unit will stabilize at the temperature of its surroundings.

Using Compact Discs

Discs which can be played on this unit:

- Conventional audio CD
- Properly finalized CD-R and CD-RW discs
- Always place the disc on the disc tray with the label side up. (Compact discs can be played or recorded only on one side.)
- To remove a disc from its storage case, press down on the center of the case and lift the disc out, holding it carefully by the edges. Should the disc become dirty, wipe the surface radially (from the center hole outward towards the outer edge) with a soft, dry cloth.



How to remove the disc



How to hold the disc



How to clean the disc

- Never use such chemicals as record sprays, antistatic sprays or fluid, benzene or thinner to clean the discs. Such chemicals will do irreparable damage to the disc's plastic surface.
- Discs should be returned to their cases after use to avoid dust and scratches that could cause the laser pickup to "skip."
- Do not expose discs to direct sunlight or high humidity and temperature for extended periods. Long exposure to high temperatures will warp the disc.
- Do not play any disc that is warped, deformed or damaged. Playing such discs may cause irreparable harm to the playing mechanisms.
- CD-R and CD-RW discs are more sensitive to the effects of heat and ultraviolet rays than ordinary CDs. It is important that they are not stored in a location where direct sunlight will fall on them, and away from sources of heat such as radiators or heat-generating electrical devices.
- Printable CD-R and CD-RW discs are not recommended, as the label side might be sticky and damage the unit.
- Do not stick papers or protective sheets on the discs and do not use any protective coating spray.
- Use a soft oil-based felt-tipped pen to write the information on the label side. Never use a ball-point or hard-tipped pen, as this may cause damage to the recorded side.
- Never use a stabilizer. Using commercially available CD stabilizers with this unit will damage the mechanisms and cause them to malfunction.
- Do not use CDs with an irregular shape (octagonal, heart shaped, business card size, etc.). CDs of this sort can damage the unit:



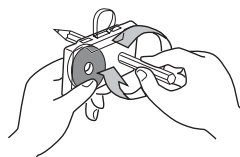
- If you are in any doubt as to the care and handling of a CD-R/CD-RW disc, read the precautions supplied with the disc, or contact the disc manufacturer directly.

CARE & MAINTENANCE

Using Cassette Tapes

Tape Handling:

- Use your finger or a pencil to turn the cassette tape's hub and take up any slack tape.
- Avoid touching the tape. Fingerprints attract dust and dirt.
- Avoid dropping or subjecting cassettes to excessive shocks.
- As C-120 tapes are physically weak and could become entangled in the transport mechanism, do not use them.



Do not store tapes in the following places:

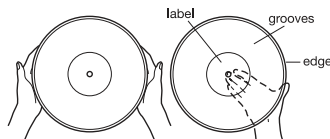
- On top of heaters, exposed to direct sunlight or in any other places with high temperatures.
- Near speakers, on TV sets or amplifiers or where they would be exposed to strong magnetic fields.
- Where humidity is high or in dirty, dusty places.

Head Maintenance

The head and tape path should be cleaned and demagnetized periodically. Please use a cassette type head cleaning tape and demagnetizer. For specific details on the proper use of either item, please read each item's instruction manual.

Maintaining Vinyl Records

- Do not touch the record's grooves. Only handle records by edges or label.
- Make sure your hands are clean. Skin oils from even clean hands can leave a residue on the record surface that will gradually deteriorate the quality of your record.
- Keep your records away from dust. Store in a cool, dry place.
- Keep records in sleeves and jackets when not in use to avoid dust and scratches.
- Store records upright on edges. Records stored horizontally will bend and warp.
- Do not expose records to direct sunlight or high humidity and temperature. Long exposure to high temperatures will warp records.
- Do not store records in the trunk of a car.
- Store records in an area with a stable temperature and low humidity.
- Should the record become dirty, gently wipe surface in a circular motion, using a soft anti-static cloth.



How to Replace the Stylus

The stylus should last about 50 hours under normal use. However, it is recommended that the stylus be replaced as soon as you notice a change in sound quality. Prolonged use of a worn-out stylus may damage the record. Wear and tear on the stylus will be accelerated when playing 78 RPM records. The higher speed of 78 RPM records can wear the stylus more quickly.

Caution:

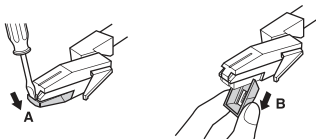
- Do not bend the stylus.
- To avoid injury, do not touch the needle.
- Turn off the unit's power before you replace the stylus.
- Keep out of the reach of children.

CARE & MAINTENANCE

- Handle with care, as the stylus is delicate. Use of a bent or broken stylus may damage the record and cause the turntable to malfunction.
- Do not expose stylus to extreme heat.
- Contact a qualified repair company if you experience difficulty in changing the stylus.

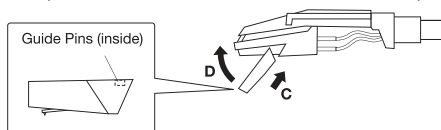
Removing an Old Stylus

1. Set a screwdriver at the tip of the stylus and push down to the direction "A".
2. Pull the stylus out toward direction "B".



Installing a New Stylus

1. Hold the tip of the stylus and insert the other edge by pressing toward direction "C".
2. Push the stylus up toward direction "D" until it locks at the tip.



TROUBLESHOOTING GUIDE

In case of trouble with the unit, please look through the problems below and see if you can solve them yourself before calling your dealer.

Function	Problem	Solution
General	No power	<ul style="list-style-type: none"> Check the connection to the AC power source. Make sure the AC source is not a switched outlet and if it is, turn the switch on. Make sure there is power to the AC outlet by plugging another item such as a lamp or fan.
	No sound	<ul style="list-style-type: none"> Turn the volume knob clockwise to adjust the volume. Connect the AUX IN cables into the correct jack.
	The sound has interference	<ul style="list-style-type: none"> The unit is too close to a TV set or similar appliance. Relocate the unit further away from them or turn the other appliances off.
Radio	Cannot listen to any station or signal is weak	<ul style="list-style-type: none"> Tune in the station properly. If a TV is near the unit, turn it off. Relocate the unit or antenna wire for the best reception position.
Record Player	Will not play	<ul style="list-style-type: none"> Turn the function knob to the right mode. Loosen the screw and detach the stylus guard. The stylus guard is a white plastic cover that protects the stylus during transportation. Failing to remove this guard will not allow the needle to contact the grooves of the record and no sound will be heard! If the stylus is worn-out, change the stylus.
	Sound skips	<ul style="list-style-type: none"> Place the unit on a stable surface to avoid vibration and shock. Make sure the unit is level both front to back and side to side. Clean the surface of the record/disc. Do not use scratched, damaged or warped records/discs.
CD Player	Will not play	<ul style="list-style-type: none"> Turn the volume knob to adjust volume and set the Function knob to CD mode. Load a disc with the label side facing up. If the disc is dirty, clean the surface of the disc. A blank disc has been loaded. Load a pre-recorded disc. Depending on the disc, it may not be possible to play a certain type disc, try again with another disc.
Bluetooth®	Will not play	<ul style="list-style-type: none"> Device is NOT paired properly; turn OFF Bluetooth, turn ON Bluetooth and repair device.
Cassette Player	Button does not work	<ul style="list-style-type: none"> Insert the cassette tape securely.
	Sound is distorted	<ul style="list-style-type: none"> Clean and demagnetize the heads. Use normal tape.
AUX In	No Sound	<ul style="list-style-type: none"> Ensure external player works when not connected via AUX cable. Ensure AUX In cables are securely connected and not damaged. Increase the volume level.

FCC NOTICE

This equipment has been tested and found to comply with the limits for a Class B digital device, pursuant to part 15 of the FCC Rules. These limits are designed to provide reasonable protection against harmful interference in a residential installation. This equipment generates, uses and can radiate radio frequency energy and, if not installed and used in accordance with the instructions, may cause harmful interference to radio communications. However, there is no guarantee that interference will not occur in a particular installation. If this equipment does cause harmful interference to radio or television reception, which can be determined by turning the equipment off and on, the user is encouraged to try to correct the interference by one or more of the following measures:

- Reorient or relocate the receiving antenna.
- Increase the separation between the equipment and receiver.
- Connect the equipment into an outlet on a circuit different from that to which the receiver is connected.
- Consult the dealer or an experienced radio/TV technician for help.

Caution: Any changes or modifications to this device not explicitly approved by manufacturer could void your authority to operate this equipment.

This device complies with part 15 of the FCC Rules. Operation is subject to the following two conditions: (1) This device may not cause harmful interference, and (2) this device must accept any interference received, including interference that may cause undesired operation.

RF Exposure Information

This equipment complies with FCC radiation exposure limits set forth for an uncontrolled environment. This equipment should be installed and operated with minimum distance 20cm between the radiator and your body.

CAUTION ON MODIFICATIONS

Any changes or modifications not expressly approved by the grantee of this device may void the authority granted by the FCC to operate this equipment. Electric and electronic equipment contains materials, components and substances that can be hazardous to your health and the environment, if the waste material (discarded electric and electronic equipment) is not handled correctly. Electric and electronic equipment is marked with the crossed-out trash can symbol, seen the right side. This symbol signifies that electric and electronic equipment should not be disposed of with other household waste but should be disposed of separately. All cities have established collection points, where electric and electronic equipment can either be submitted free of charge at recycling stations and other collection sites or be collected from the households. Additional information is available at the technical department of your city.



SUPPORT

We do our best to offer high quality products to our customers. If you experience any issues or problems with your product, please contact customer support as many issues can be quickly resolved.

If you have problems with your device, please consult the instructions in this manual. Please also visit us on the web at www.victoraudio.com to get up to the minute news, alerts, and documentation for your device. For additional assistance, please contact VICTOR Technical Support.

VICTOR Technical Support
2320 East 49th Street
Vernon, CA 90058
Tel: (866) 411-6292
Email: support@victoraudio.com

** This product has been manufactured and sold under the responsibility of NAXA ELECTRONICS INC.*

VICTOR and the DOG & GRAMOPHONE logo are trademarks used under license by NAXA ELECTRONICS INC.

Further information at www.victoraudio.com.

All other products, services, companies, trademarks, trade or product names and logos referenced herein are the property of their respective owners

