

Antenna Conducted Emissions Data

18:51:44 APR 02, 1999

~~HP~~ SPURIOUS EMISSIONS @ ANTENNA. LOW FREQ MKR 2.422 GHz

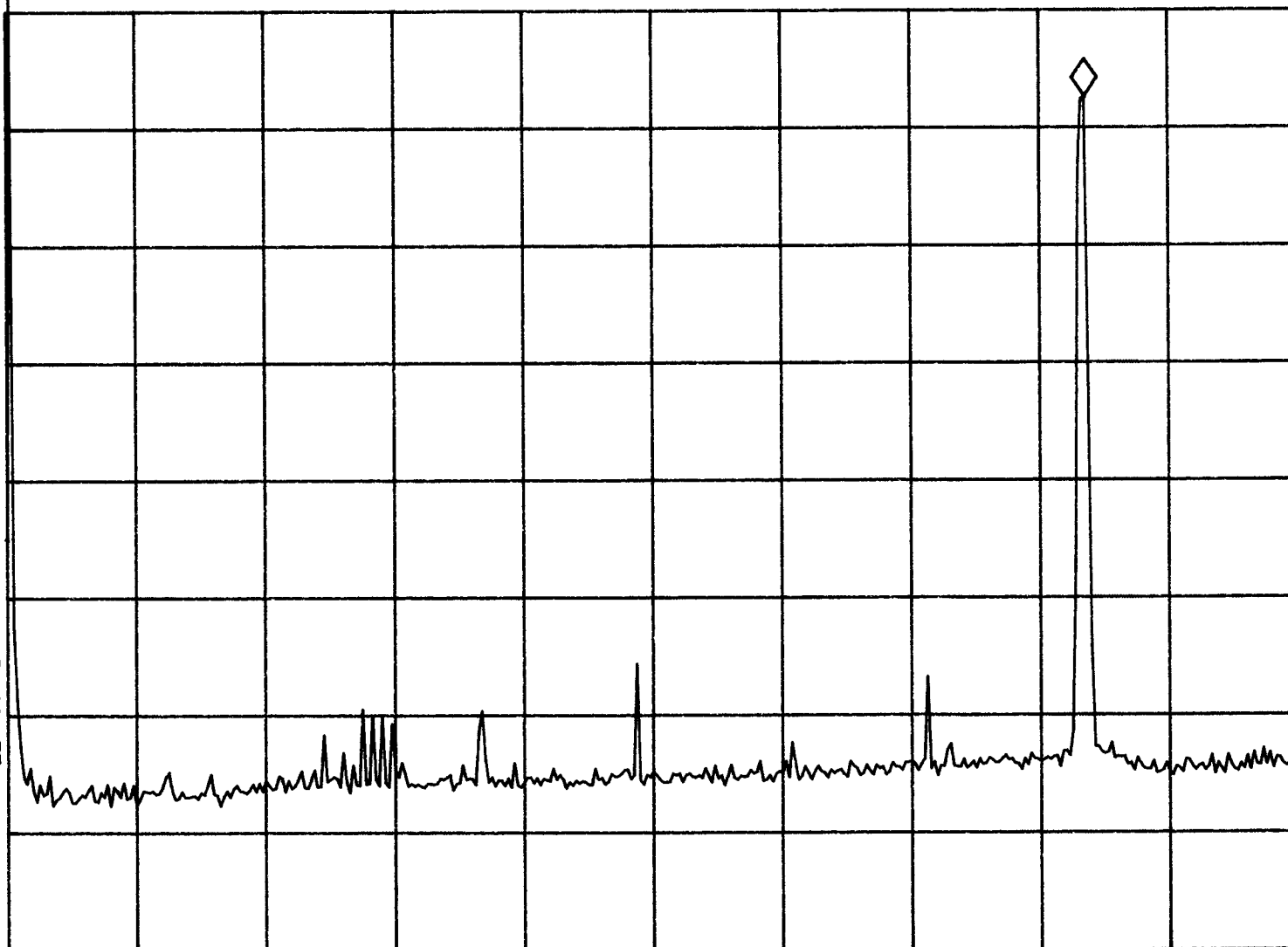
REF 120.0 dB μ V #AT 30 dB PG -2.0 dB

112.60 dB μ V

No user
Menu

PEAK
LOG
10
dB/

VA SB
SC FC
CORR



START 0 Hz

STOP 2.900 GHz

#RES BW 100 kHz

#VBW 100 kHz

SWP 870 msec

18:54:11 APR 02, 1999

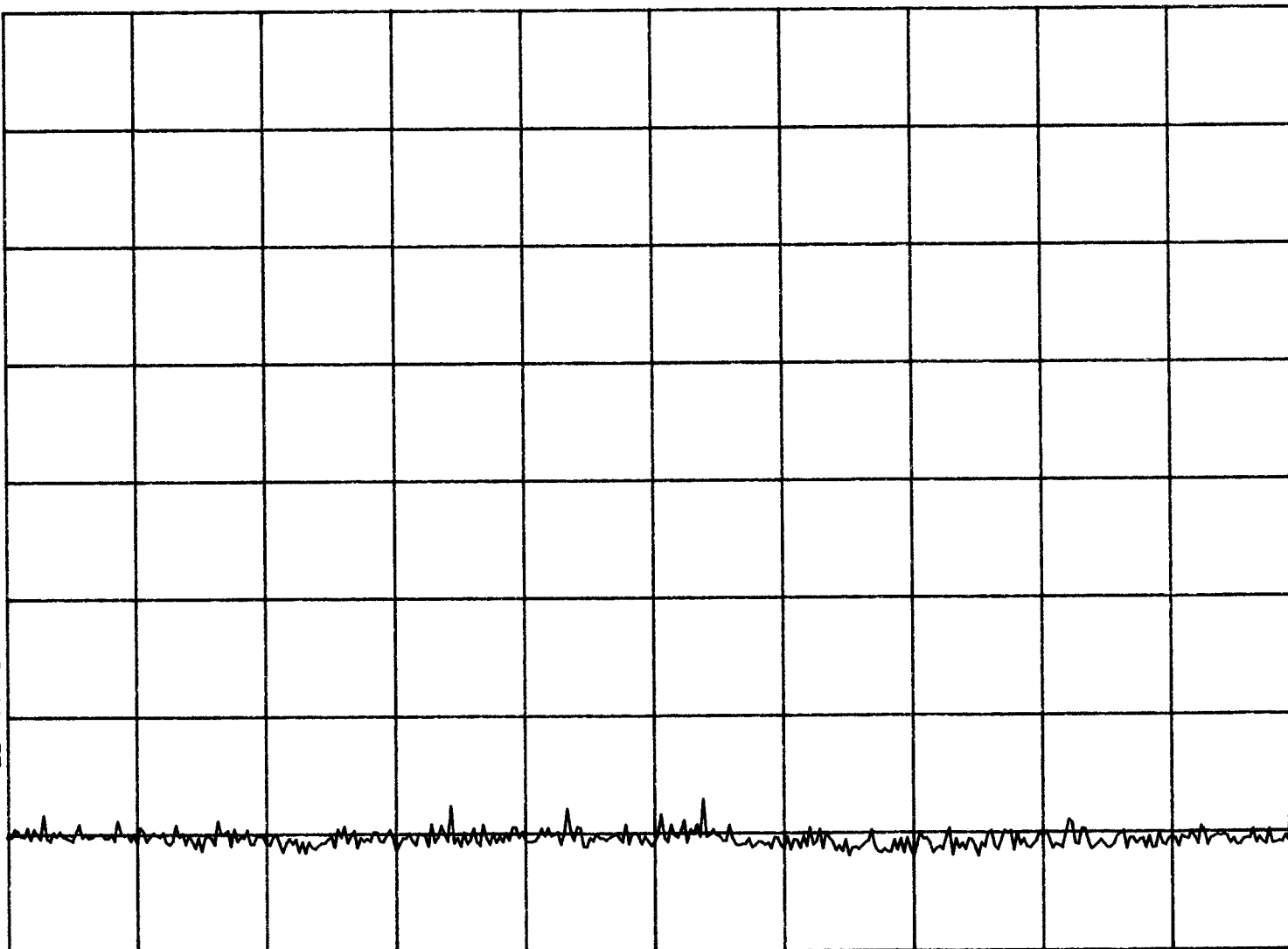
~~hp~~ SPURIOUS EMISSIONS @ ANTENNA. LOW FREQ

REF 109.0 dB μ V #AT 10 dB PG -2.0 dB

No user
Menu

PEAK
LOG
10
dB/

VA SB
SC FC
CORR



START 2.890 GHz

STOP 6.500 GHz

#RES BW 100 kHz

#VBW 100 kHz

SWP 1.08 sec

18:56:13 APR 02, 1999

~~HP~~ SPURIOUS EMISSIONS @ ANTENNA. LOW FREQ

REF 109.0 dB μ V #AT 10 dB PG -2.0 dB

PEAK

LOG

10

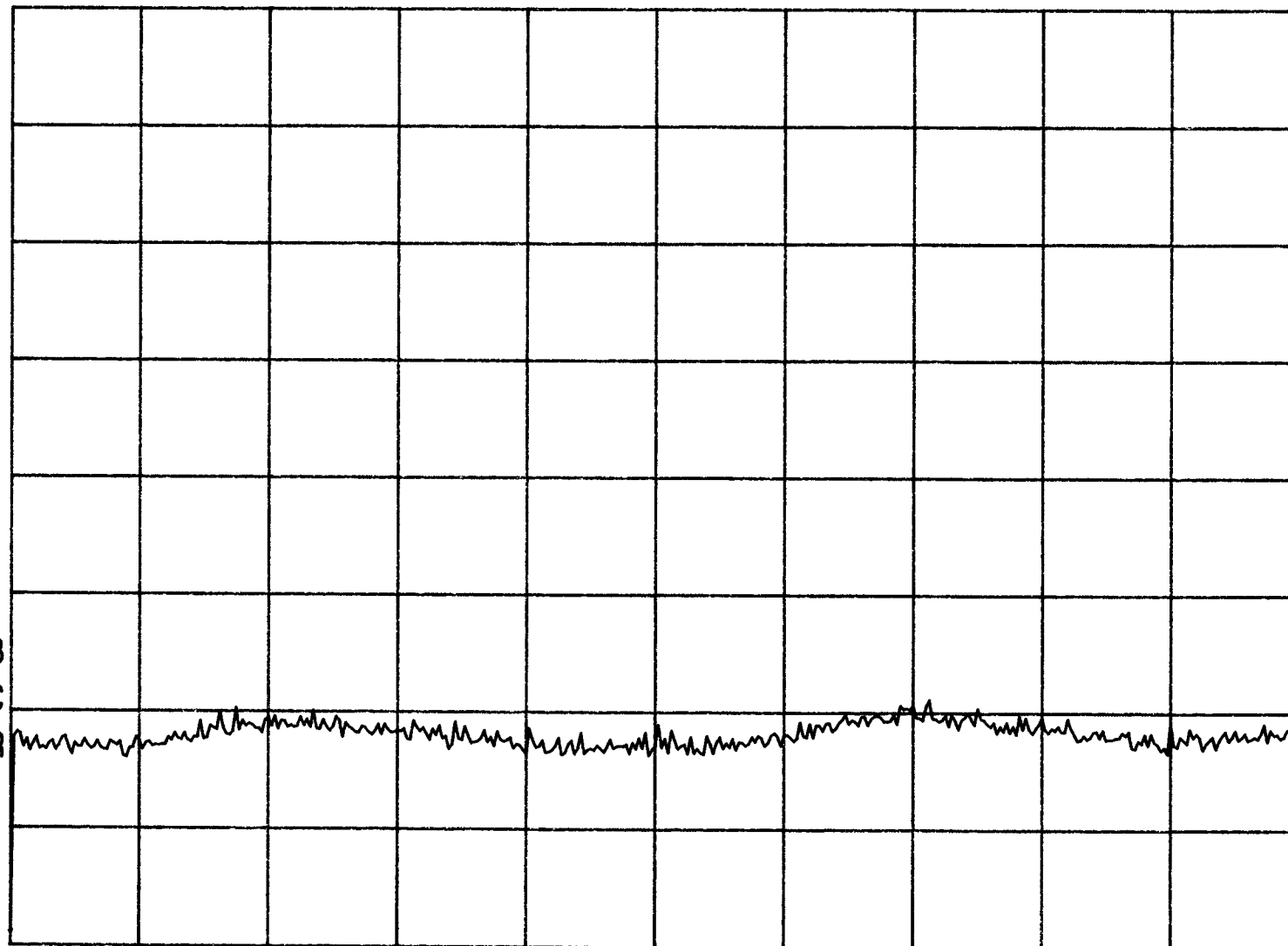
dB/

VA SB

SC FC

CORR

No user
Menu



START 6.490 GHz

STOP 12.800 GHz

#RES BW 100 kHz

#VBW 100 kHz

SWP 1.89 sec

18:58:19 APR 02, 1999

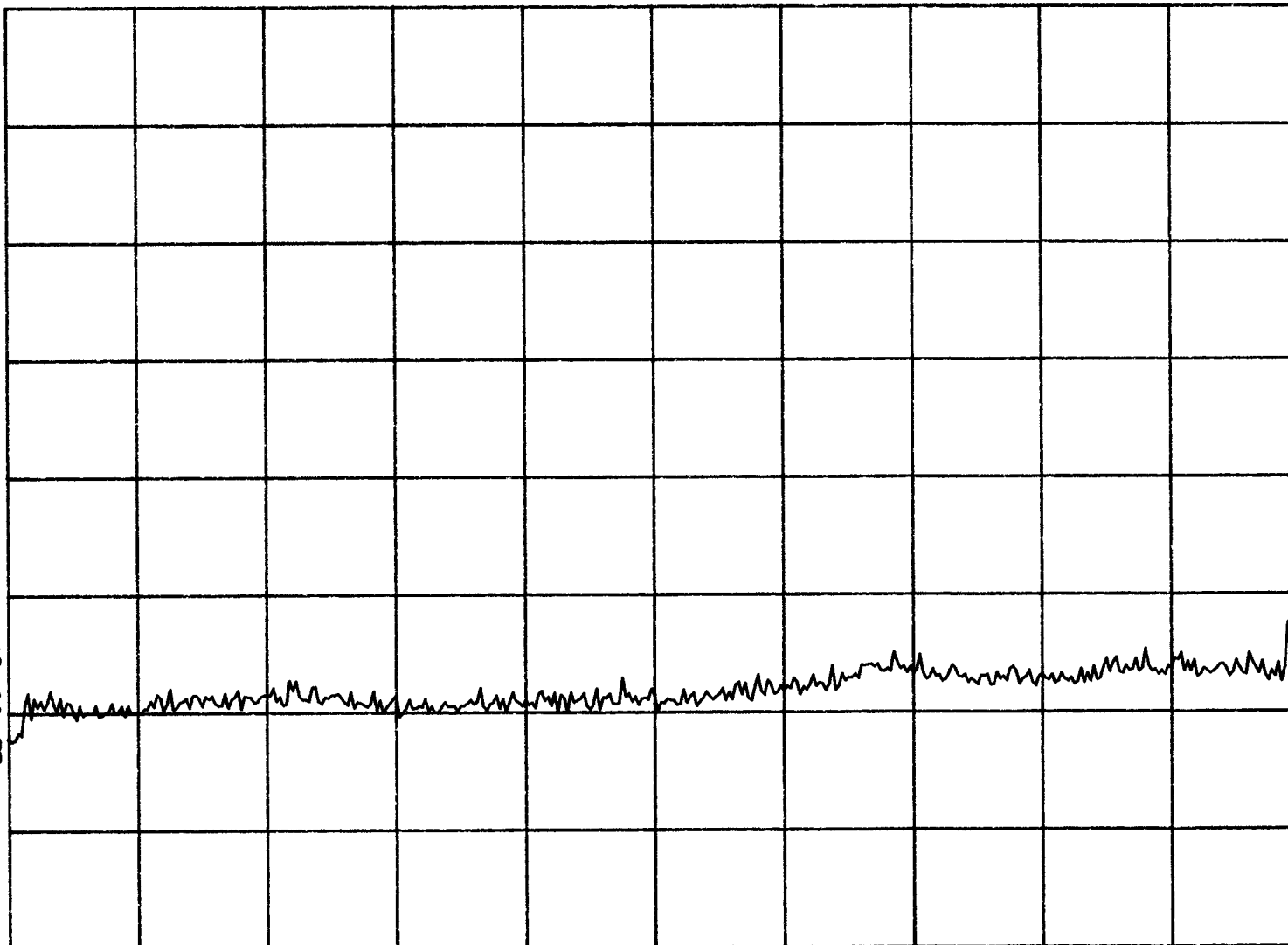
~~/P~~ SPURIOUS EMISSIONS @ ANTENNA. LOW FREQ

REF 109.0 dB μ V #AT 10 dB PG -2.0 dB

No user
Menu

PEAK
LOG
10
dB/

VA SB
SC FC
CORR



START 12.790 GHz

STOP 19.500 GHz

#RES BW 100 kHz

#VBW 100 kHz

SWP 2.01 sec

19:00:01 APR 02, 1999

~~/~~ SPURIOUS EMISSIONS @ ANTENNA. LOW FREQ

REF 109.0 dBμV #AT 10 dB PG -2.0 dB

No user
Menu

PEAK

LOG

10

dB/

VA SB

SC FC

CORR

START 19.490 GHz

#RES BW 100 kHz

#VBW 100 kHz

STOP 25.000 GHz

SWP 1.65 sec

15:09:55 MAR 31, 1999

~~HP~~ SPURIOUS EMISSIONS @ ANTENNA. MID FREQ. MKR 2.429 GHz

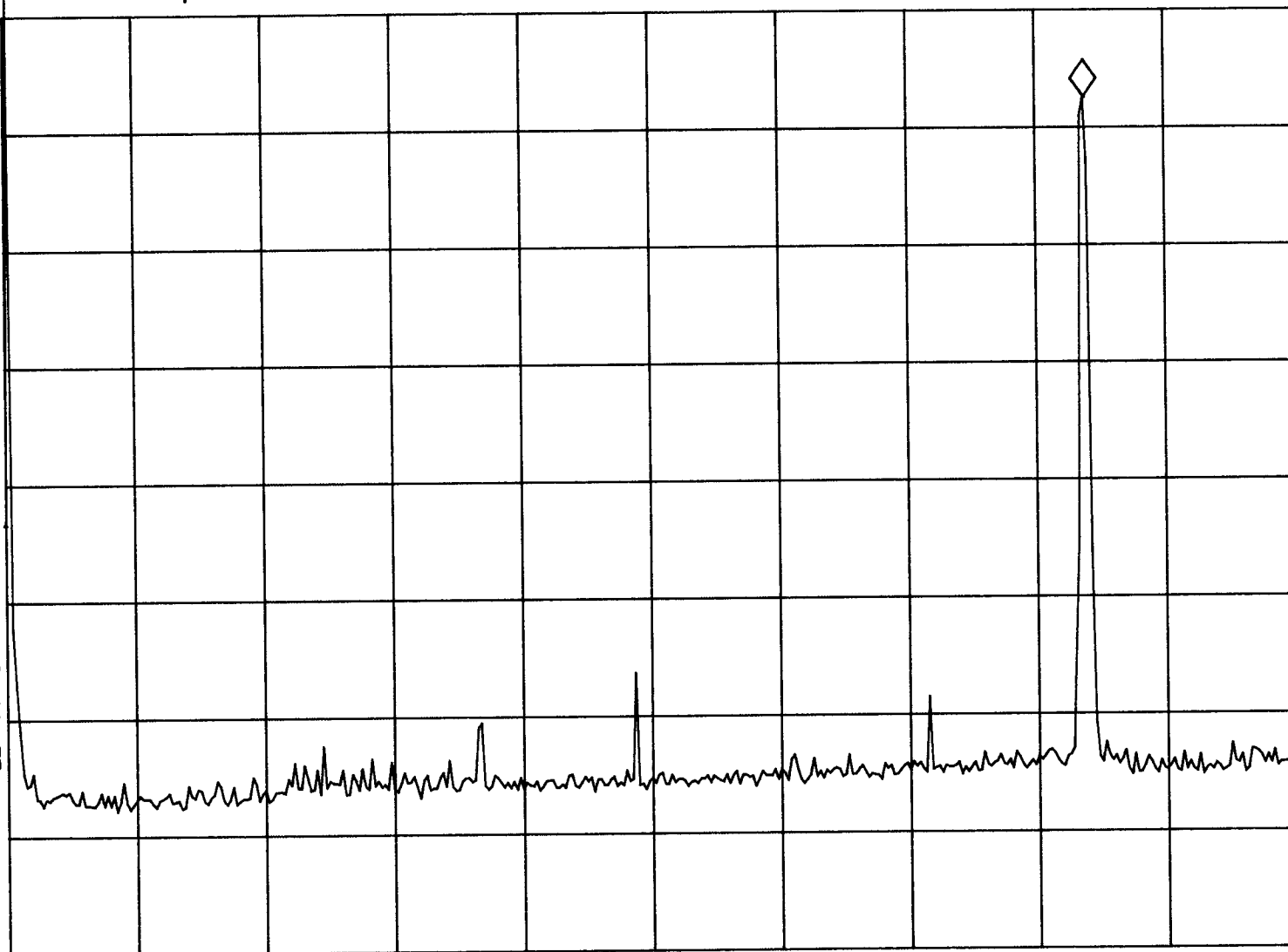
REF 120.0 dB μ V #AT 30 dB PG -2.0 dB

112.54 dB μ V

No user
Menu

PEAK
LOG
10
dB/

VA SB
SC FC
CORR



START 0 Hz

STOP 2.900 GHz

#RES BW 100 kHz

#VBW 100 kHz

SWP 870 msec

15: 12: 36 MAR 31, 1999

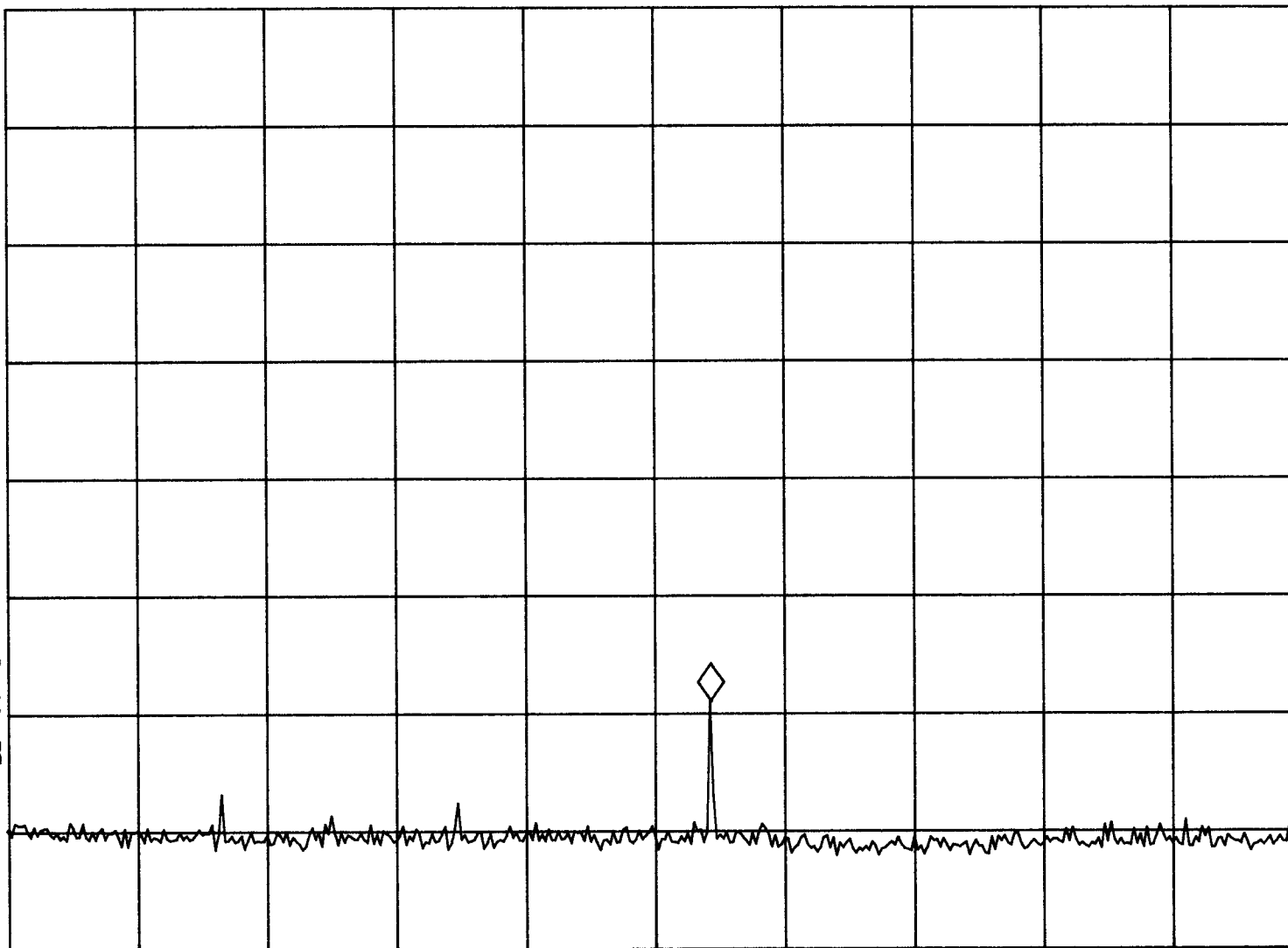
~~HP~~ SPURIOUS EMISSIONS @ ANTENNA. MID FREQ. MKR 4.848 GHz

REF 109.0 dB μ V #AT 10 dB PG -2.0 dB 50.06 dB μ V

No user
Menu

PEAK
LOG
10
dB/

VA SB
SC FC
CORR



START 2.890 GHz

STOP 6.500 GHz

#RES BW 100 kHz

#VBW 100 kHz

SWP 1.08 sec

15: 16: 04 MAR 31, 1999

~~HP~~ SPURIOUS EMISSIONS @ ANTENNA. MID FREQ. MKR 9.913 GHz

REF 109.0 dB μ V #AT 10 dB PG -2.0 dB

46.49 dB μ V

No user
Menu

PEAK

LOG

10

dB/

VA SB

SC FC

CORR

START 6.490 GHz

#RES BW 100 kHz

#VBW 100 kHz

STOP 12.800 GHz

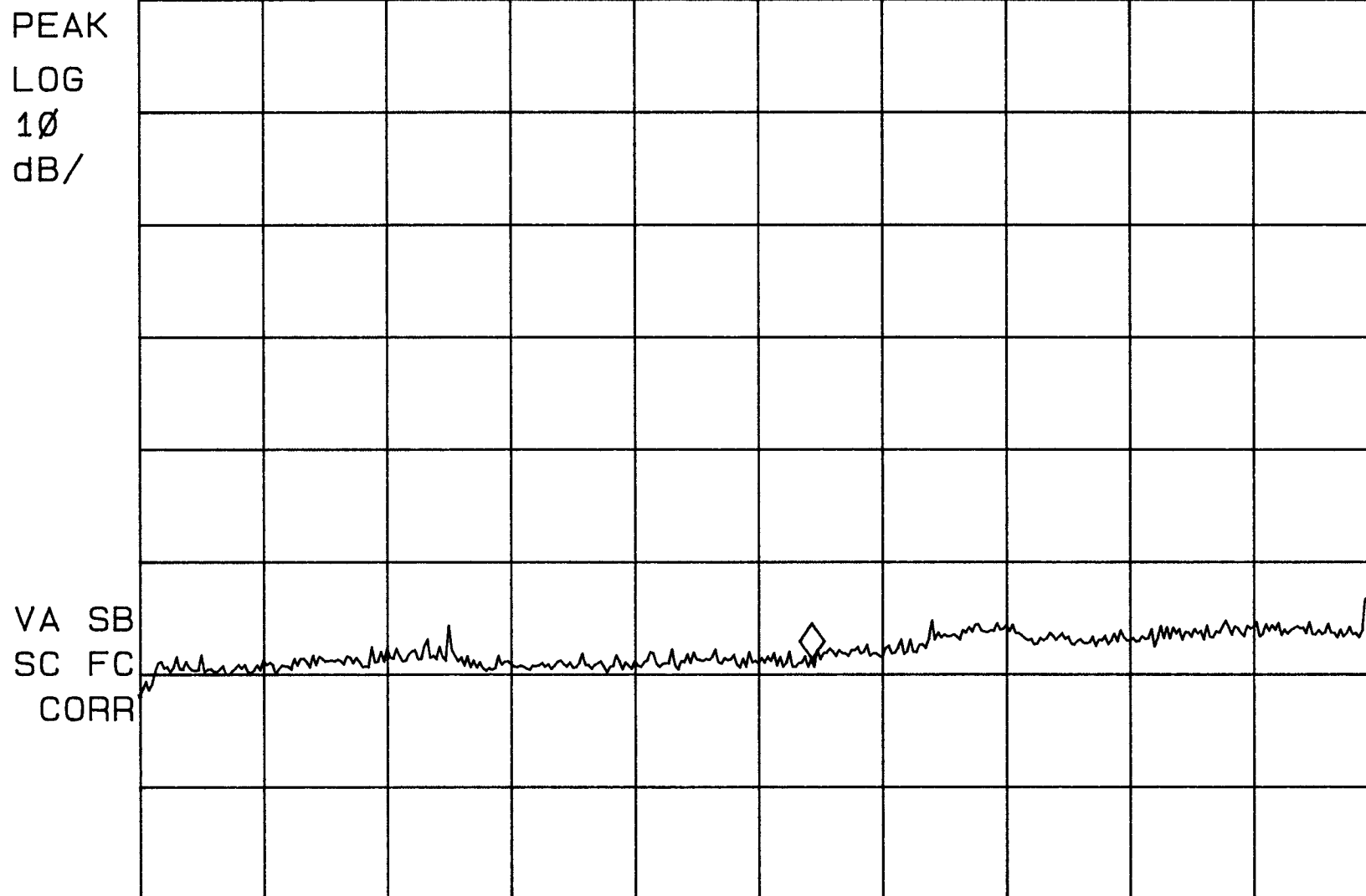
SWP 1.89 sec

15:20:14 MAR 31, 1999

~~/P~~ SPURIOUS EMISSIONS @ ANTENNA. MID FREQ.MKR 16.430 GHz

REF 109.0 dBμV #AT 10 dB PG -2.0 dB 50.34 dBμV

No user
Menu



START 12.790 GHz

STOP 19.500 GHz

#RES BW 100 kHz

#VBW 100 kHz

SWP 2.01 sec

15:23:05 MAR 31, 1999

~~HP~~ SPURIOUS EMISSIONS @ ANTENNA. MID FREQ.MKR 22.479 GHz

REF 109.0 dBμV #AT 10 dB PG -2.0 dB 56.49 dBμV

No user
Menu

PEAK

LOG

10

dB/

VA SB

SC FC

CORR

START 19.490 GHz

#RES BW 100 kHz

#VBW 100 kHz

STOP 25.000 GHz

SWP 1.65 sec

16:38:09 APR 02, 1999

~~/~~ SPURIOUS EMISSIONS @ ANTENNA. HIGH FREQ MKR 2.465 GHz

REF 120.0 dB μ V #AT 30 dB PG -2.0 dB

111.59 dB μ V

No user
Menu

PEAK

LOG

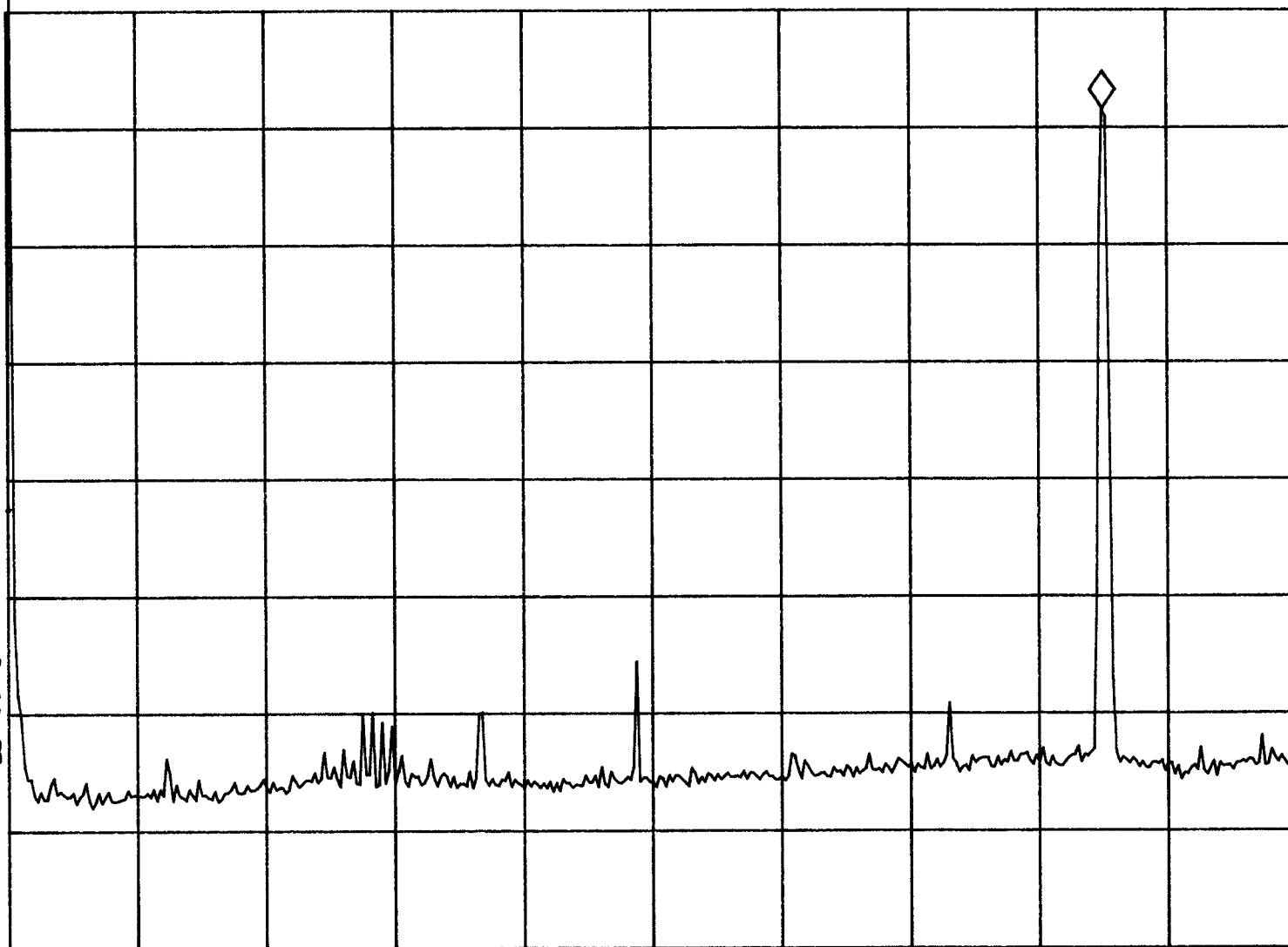
10

dB/

VA SB

SC FC

CORR



START 0 Hz

STOP 2.900 GHz

#RES BW 100 kHz

#VBW 100 kHz

SWP 870 msec

16: 40: 21 APR 02, 1999

~~HP~~ SPURIOUS EMISSIONS @ ANTENNA. HIGH FREQ MKR 4.930 GHz

REF 109.0 dB μ V

AT 10 dB PG -2.0 dB

49.06 dB μ V

No user
Menu

PEAK

LOG

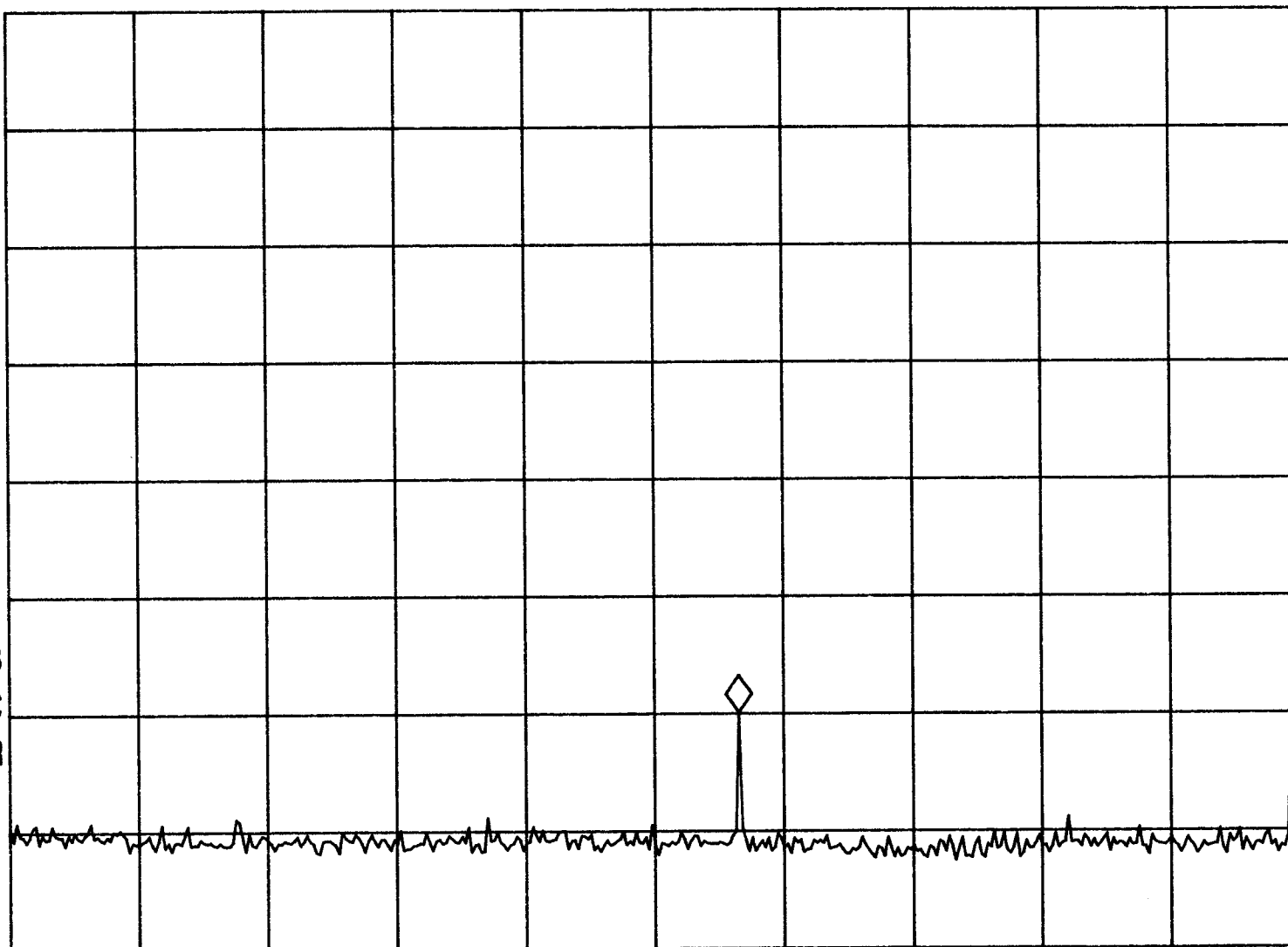
10

dB/

VA SB

SC FC

CORR



START 2.890 GHz

STOP 6.500 GHz

#RES BW 100 kHz

#VBW 100 kHz

SWP 1.08 sec

16: 42: 40 APR 02, 1999

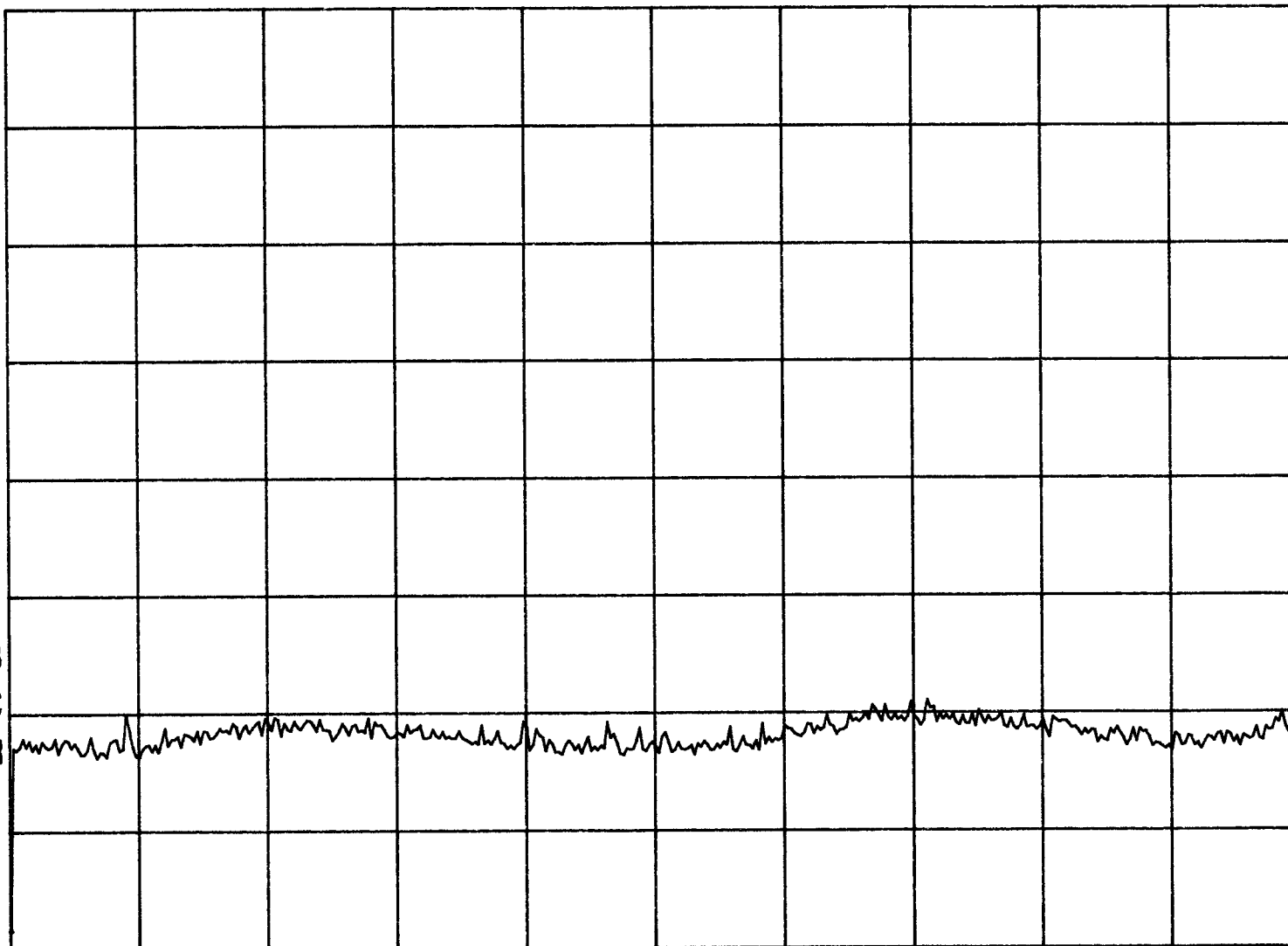
~~HP~~ SPURIOUS EMISSIONS @ ANTENNA. HIGH FREQ

REF 109.0 dB μ V AT 10 dB PG -2.0 dB

No user
Menu

PEAK
LOG
10
dB/

VA SB
SC FC
CORR



START 6.490 GHz

STOP 12.800 GHz

#RES BW 100 kHz

#VBW 100 kHz

SWP 1.89 sec

16: 44: 39 APR 02, 1999

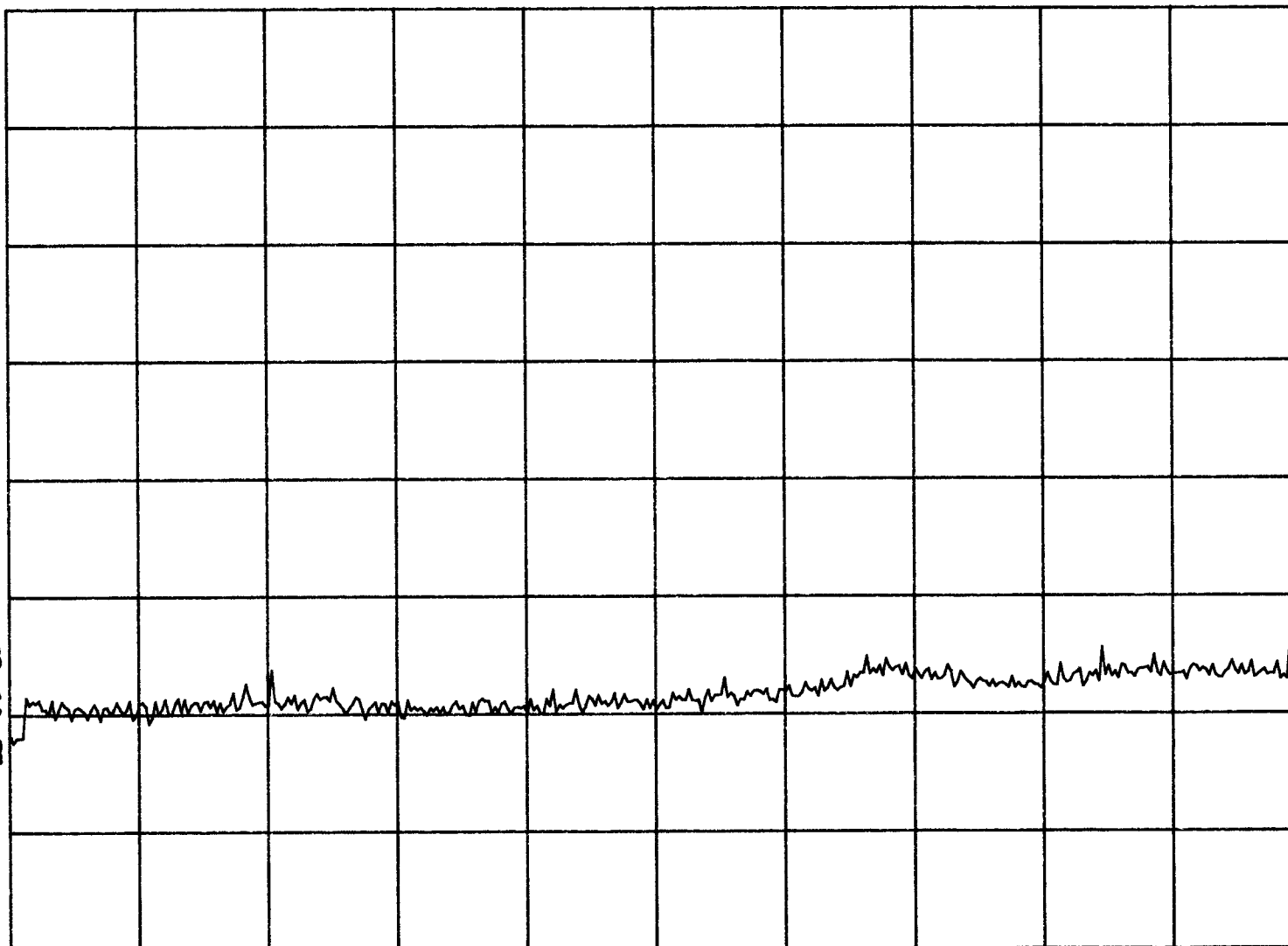
~~HP~~ SPURIOUS EMISSIONS @ ANTENNA. HIGH FREQ

REF 109.0 dB μ V AT 10 dB PG -2.0 dB

No user
Menu

PEAK
LOG
10
dB/

VA SB
SC FC
CORR



START 12.790 GHz

STOP 19.500 GHz

#RES BW 100 kHz

#VBW 100 kHz

SWP 2.01 sec

16: 46: 16 APR 02, 1999

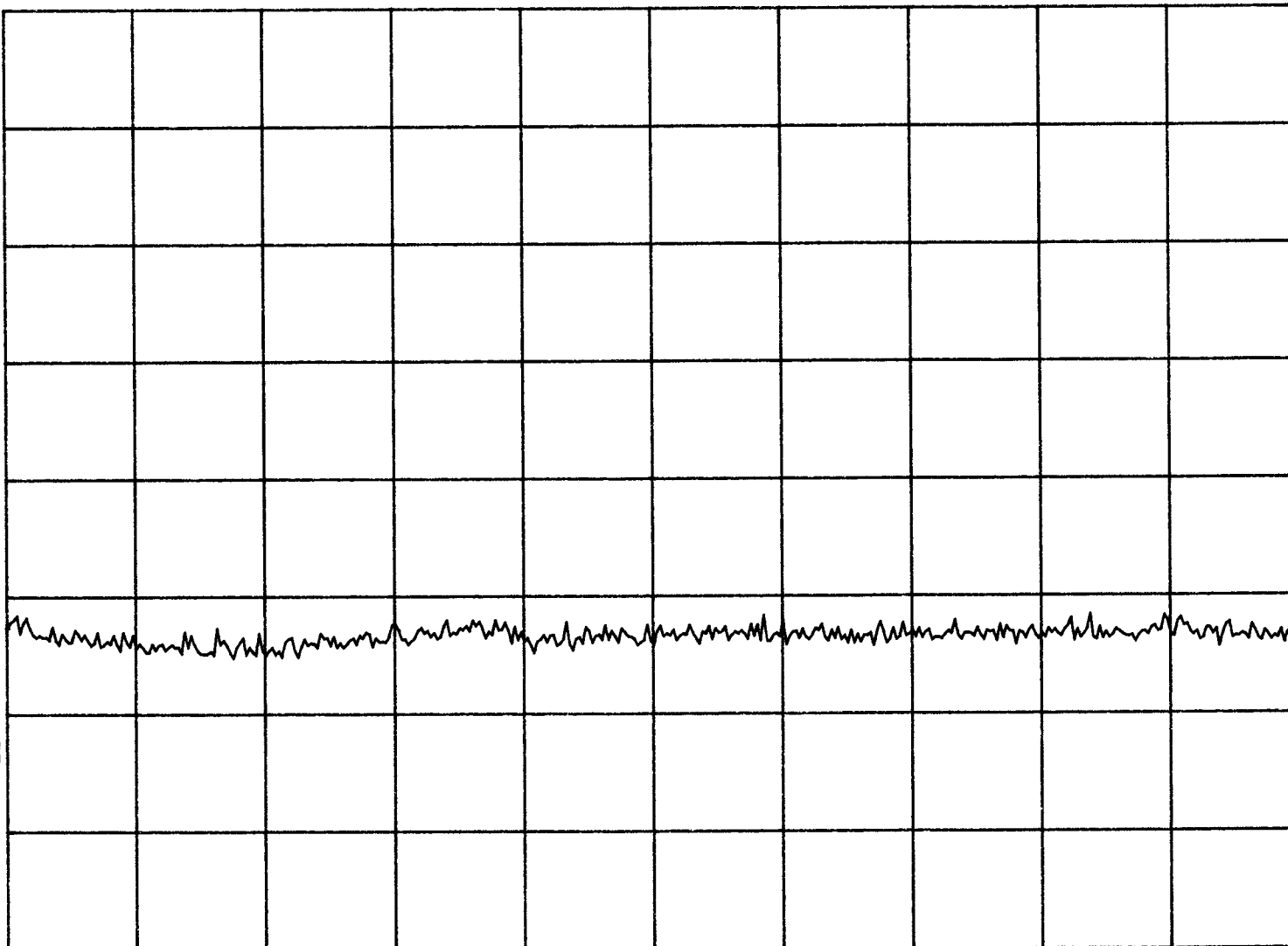
~~HP~~ SPURIOUS EMISSIONS @ ANTENNA. HIGH FREQ

REF 109.0 dB μ V AT 10 dB PG -2.0 dB

No user
Menu

PEAK
LOG
10
dB/

VA SB
SC FC
CORR



START 19.490 GHz

STOP 25.000 GHz

#RES BW 100 kHz

#VBW 100 kHz

SWP 1.65 sec

18:42:34 APR 02, 1999

~~HP~~ BAND EDGES, LOW FREQ.

REF 115.0 dB μ V #AT 20 dB

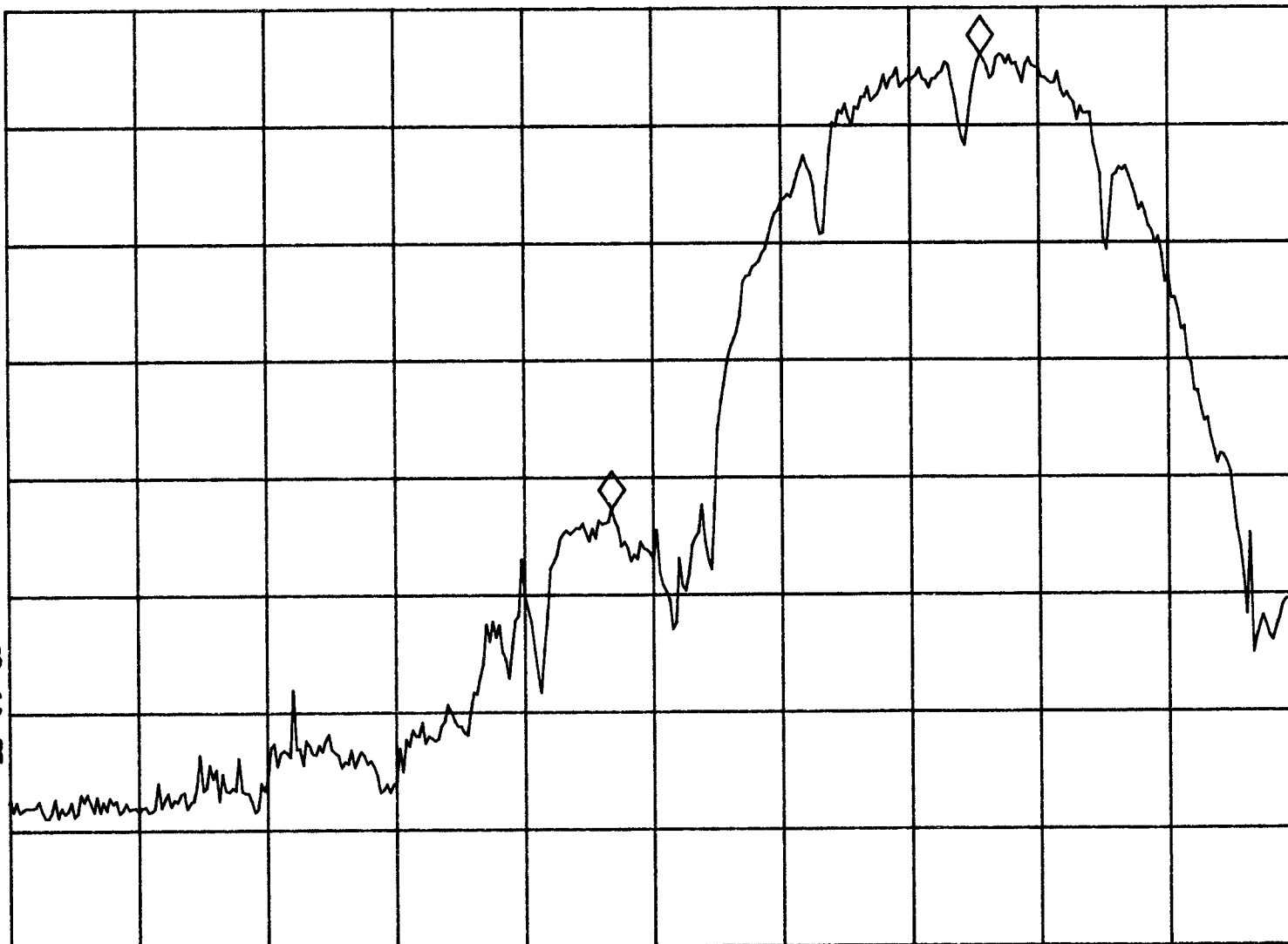
MKR Δ -14.38 MHz

-38.72 dB

No user
Menu

PEAK
LOG
10
dB/

VA SB
SC FC
CORR



CENTER 2.40000 GHz

#RES BW 100 kHz

#VBW 100 kHz

SPAN 50.00 MHz

SWP 20.0 msec

16:57:31 APR 02, 1999

~~HP~~ BAND EDGES. HIGH FREQ.

REF 115.0 dBμV #AT 20 dB

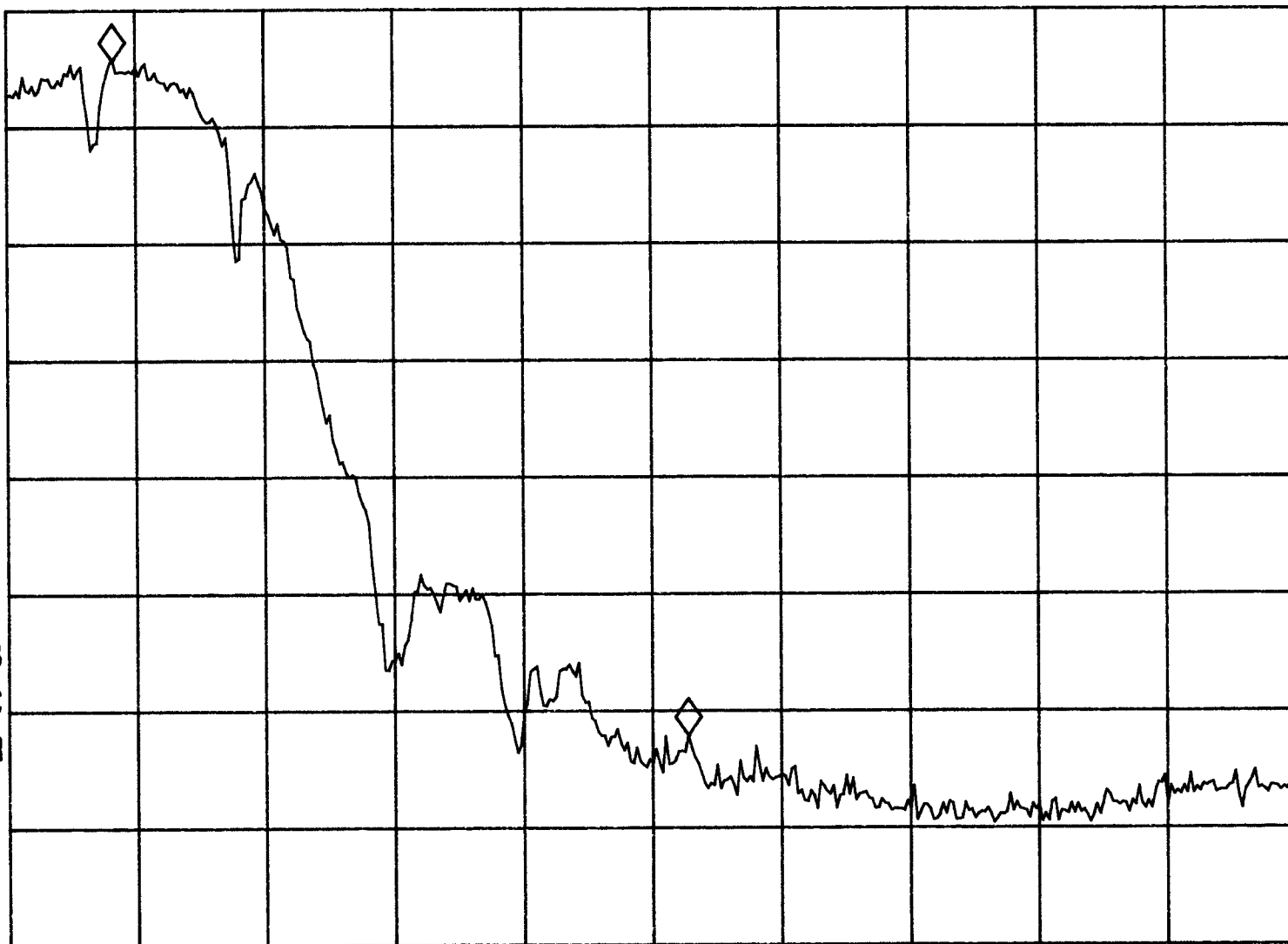
MKR Δ 22.25 MHz

-57.80 dB

No user
Menu

PEAK
LOG
10
dB/

VA SB
SC FC
CORR



CENTER 2.48350 GHz

#RES BW 100 kHz

#VBW 100 kHz

SPAN 50.00 MHz

SWP 20.0 msec