

FCC PART 15 SUBPART C
EMI MEASUREMENT AND TEST REPORT

For

Shenzhen Baoan Hantong Electronics Factory

Block 11 & 12, Jinbi Industrial Area
Hwangtian, Baoan, Shenzhen, China

FCC ID: OK836882HT02

January 16, 2003

This Report Concerns: <input checked="checked" type="checkbox"/> Original Report	Equipment Type: 2.4GHz Cordless Telephone
Test Engineer: <u>Jeff Lee</u>	
Report No.: <u>R0211143</u>	
Test Date: <u>December 5, 2002</u>	
Reviewed By: <u>Benjamin Jing</u>	
 Prepared By: Bay Area Compliance Laboratory Corporation 230 Commercial Street Sunnyvale, CA 94085 Tel: (408) 732-9162 Fax: (408) 732-9164	

Note: This test report is specially limited to the above client company and the product model only. It may not be duplicated without prior written consent of Bay Area Compliance Laboratory Corporation. This report **must not** be used by the client to claim product endorsement by NVLAP or any agency of the U.S. Government.

TABLE OF CONTENTS

1 - GENERAL INFORMATION.....	3
1.1 PRODUCT DESCRIPTION FOR EQUIPMENT UNDER TEST (EUT).....	3
1.2 OBJECTIVE	3
1.3 RELATED SUBMITTAL(S)/GRANT(S).....	3
1.4 TEST METHODOLOGY	3
1.5 TEST FACILITY	3
1.6 TEST EQUIPMENT LIST	4
1.7 LOCAL SUPPORT EQUIPMENT LIST AND DETAILS.....	4
1.8 EXTERNAL I/O CABLING LIST AND DETAILS	4
2 - SYSTEM TEST CONFIGURATION.....	5
2.1 DESCRIPTION OF TEST CONFIGURATION.....	5
2.2 EQUIPMENT MODIFICATIONS.....	5
2.3 CONFIGURATION OF TEST SYSTEM	5
2.4 TEST SETUP BLOCK DIAGRAM	5
3 - CONDUCTED EMISSIONS	6
3.1 MEASUREMENT UNCERTAINTY	6
3.2 EUT SETUP	6
3.3 SPECTRUM ANALYZER SETUP	6
3.4 TEST PROCEDURE	6
3.5 SUMMARY OF TEST RESULTS.....	7
3.6 CONDUCTED EMISSIONS TEST DATA.....	7
3.7 PLOT OF CONDUCTED EMISSIONS TEST DATA.....	7
4 - RADIATED EMISSIONS	8
4.1 MEASUREMENT UNCERTAINTY	8
4.2 EUT SETUP	8
4.3 SPECTRUM ANALYZER SETUP	8
4.4 TEST PROCEDURE	8
4.5 CORRECTED AMPLITUDE & MARGIN CALCULATION	9
4.6 SUMMARY OF TEST RESULTS.....	9
4.7 RADIATED EMISSIONS TEST RESULT DATA	10
5 - BAND EDGES TESTING.....	14
5.1 TEST PROCEDURE	14
5.2 TEST EQUIPMENT	14
5.3 TEST RESULTS.....	14

1 - GENERAL INFORMATION

1.1 Product Description for Equipment Under Test (EUT)

Applicant:	Shenzhen Baoan Hantong Electronics Factory
Product Description:	2.4GHz 50-channel Cordless Phone
Model:	36882
FCC ID:	OK836882HT02
Dimension:	Base: 6.5"L x 5.75"W x 2.75"H Handset: 7.0"L x 2.25"W x 1.4"H
Power Supply:	Shenzhen Baoan AC/DC Adapter, U090035D

** The test data was good for test sample only. It may have deviation for other product samples.*

1.2 Objective

This document is a qualification test report based on the Electromagnetic Interference (EMI) tests performed on the EUT. The EMI measurements were performed according to the measurement procedure described in ANSI C63.4-1992.

The tests were performed in order to determine whether the electromagnetic emissions from the equipment under test, referred to as EUT hereafter, are within the specification limits defined by FCC Title 47, Part 15, Subpart C, section 15.205, 15.207, and 15.249.

1.3 Related Submittal(s)/Grant(s)

No related submittal(s)/grant(s).

1.4 Test Methodology

All measurements contained in this report were conducted with ANSI C63.4-1992, American National Standard for Methods of Measurement of Radio-Noise Emissions from Low-Voltage Electrical and Electronic Equipment in the range of 9 kHz to 40 GHz.

All radiated and conducted emissions measurement was performed at Bay Area Compliance Laboratory, Corp. The radiated testing was performed at an antenna-to-EUT distance of 3 meters.

1.5 Test Facility

The Open Area Test site used by Bay Area Compliance Laboratory Corporation to collect radiated and conducted emission measurement data is located in the back parking lot of the building at 230 Commercial Street, Sunnyvale, California, USA.

Test site at Bay Area Compliance Laboratory Corporation has been fully described in reports submitted to the Federal Communication Commission (FCC) and Voluntary Control Council for Interference (VCCI). The details of these reports has been found to be in compliance with the requirements of Section 2.948 of the FCC Rules on February 11 and December 10, 1997 and Article 8 of the VCCI regulations on December 25, 1997. The facility also complies with the radiated and AC line conducted test site criteria set forth in ANSI C63.4-1992.

The Federal Communications Commission and Voluntary Control Council for Interference has the reports on file and is listed under FCC file 31040/SIT 1300F2 and VCCI Registration No.: C-1298 and R-1234. The test site has been approved by the FCC and VCCI for public use and is listed in the FCC Public Access Link (PAL) database.

Additionally, Bay Area Compliance Laboratory Corporation is a National Institute of Standards and Technology (NIST) accredited laboratory, under the National Voluntary Laboratory Accredited Program (NVLAP). The scope of the accreditation covers the FCC Method - 47 CFR Part 15 - Digital Devices, CISPR 22: 1997, and AS/NZS 3548: Electromagnetic Interference - Limits and Methods of Measurement of Information Technology Equipment test methods under NVLAP Lab Code 200167-0.

1.6 Test Equipment List

Manufacturer	Description	Model	Serial Number	Cal. Due Date
HP	Spectrum Analyzer	8564E	08303	12/6/2003
HP	Spectrum Analyzer	8593B	2919A00242	12/20/2003
HP	Amplifier	8349B	2644A02662	12/20/2003
HP	Quasi-Peak Adapter	85650A	917059	12/6/2003
HP	Amplifier	8447E	1937A01046	12/6/2003
A.H. System	Horn Antenna	SAS0200/571	261	12/27/2003
Com-Power	Log Periodic Antenna	AL-100	16005	11/2/2003
Com-Power	Biconical Antenna	AB-100	14012	11/2/2003
Solar Electronics	LISN	8012-50-R-24-BNC	968447	12/28/2003
Com-Power	LISN	LI-200	12208	12/20/2003
Com-Power	LISN	LI-200	12005	12/20/2003
BACL	Data Entry Software	DES1	0001	12/20/2003

*Statement of Traceability: Bay Area Compliance Laboratory Corp. Certifies that all calibration has been performed using suitable standards traceable to the NATIONAL INSTITUTE of STANDARDS and TECHNOLOGY.

1.7 Local Support Equipment List and Details

Manufacturer	Description	Model	Serial Number	FCC ID
Panasonic	Telephone	KX-T3175	80071	DOC
Telton Corp.	Simulator	TLS-3B-01	6IBTB142741	ACJMLA-75986-MT-E

1.8 External I/O Cabling List and Details

Cable Description	Length (M)	Port/From	To
Unshielded Telephone Cable	2.0	RJ11Port / EUT	Simulator
Unshielded Telephone Cable	2.0	RJ11 Port / Telephone	Simulator

2 - SYSTEM TEST CONFIGURATION

2.1 Description of Test Configuration

The EUT was configured for testing in a typical fashion (as normally used by a typical user).

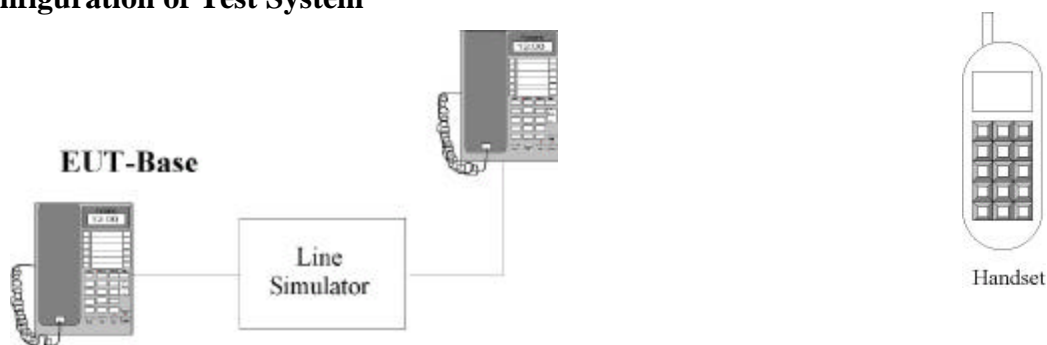
Handset being tested: The Handset was placed on the wooden table and tested in three orthogonal axis. The handset was connected to the headset via its headset port. The Low, middle, and high channels were tested. The handset was transmitting to and receiving from the Base unit. The EUT was investigated for emissions while off hook. The radiated data was taken in this mode of operation. All initial and final investigations were performed with the EMI receiver in manual mode scanning the frequency range continuously. The cables were bundled and routed as necessary.

Base being tested: The Base was placed on the wooden table. The Low, middle, and high channels were tested. The base was connected to the line simulator and an AC adapter via its Tel Line and power ports, respectively. The base was transmitting and receiving from the Handset. The conducted as well as radiated data was taken in this mode of operation. All initial and final investigations were performed with the EMI receiver in manual mode scanning the frequency range continuously. The cables were bundled and routed as necessary.

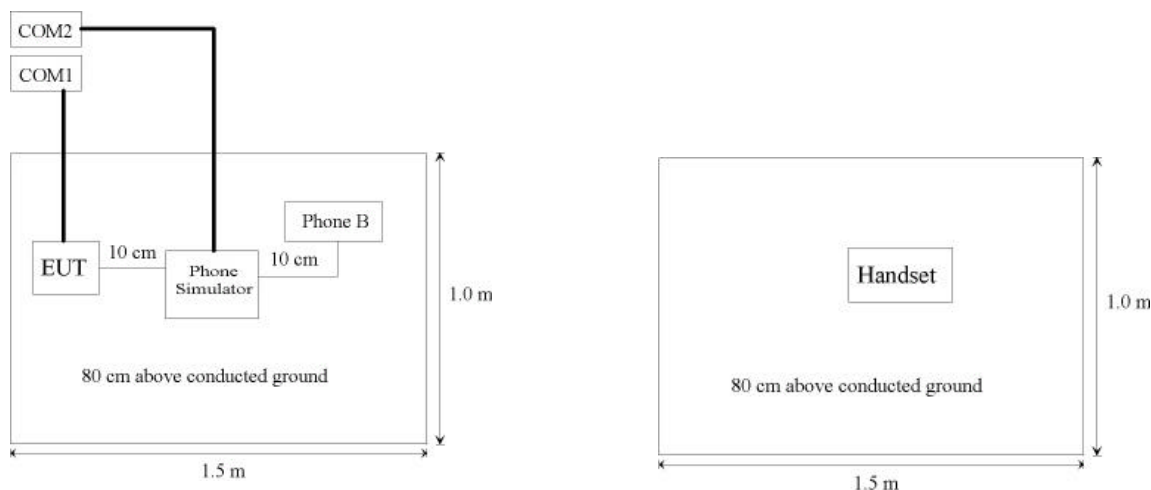
2.2 Equipment Modifications

No modification(s) to the EUT were made by BACL to comply with the applicable limits.

2.3 Configuration of Test System



2.4 Test Setup Block Diagram



3 - CONDUCTED EMISSIONS

3.1 Measurement Uncertainty

All measurements involve certain levels of uncertainties, especially in field of EMC. The factors contributing to uncertainties are spectrum analyzer, cable loss, and LISN.

Based on NIS 81, The Treatment of Uncertainty in EMC Measurements, the best estimate of the uncertainty of any conducted emissions measurement at BACL is ± 2.4 dB.

3.2 EUT Setup

The measurement was performed at the **Open Area Test Site**, using the same setup per ANSI C63.4-1992 measurement procedure. Specification used was with the FCC Class B limits.

The Base of EUT was connected to a 120Vac/60Hz power source and it was placed center and the back edge of the test table. The simulator was placed on one side of the EUT base, and the telephone was placed on the other side the EUT base. The rear of the EUT and peripherals were placed flushed with the rear of the tabletop.

The spacing between the peripherals was 10 centimeters.

The External I/O cables were draped over edge of the test table and bundle when necessary.

3.3 Spectrum Analyzer Setup

The spectrum analyzer was set with the following configurations during the conducted emission test:

Start Frequency	450 kHz
Stop Frequency	30 MHz
Sweep Speed.....	Auto
IF Bandwidth.....	10 kHz
Video Bandwidth	10 kHz
Quasi-Peak Adapter Bandwidth.....	9 kHz
Quasi-Peak Adapter Mode.....	Normal

3.4 Test Procedure

During the conducted emission test, the EUT power cord was connected to the auxiliary outlet of the first LISN with all support equipment power cords connected to the second.

The EUT was tested to represent worst-case results for the final qualification test. Therefore, these results were used for final test data recorded in the table listed under section 3.6 of this report.

Maximizing procedure was performed on the six (6) highest emissions to ensure EUT compliance using all installation combination. All data was recorded in the peak detection mode. Quasi-peak readings were only performed when an emission was found to be marginal (within -4 dB of specification limit). Quasi-peak readings are distinguished with a "Qp".

3.5 Summary of Test Results

According to the data in section 3.6, the EUT complied with the FCC Conducted margin for a Class B device and these test results is deemed satisfactory evidence of compliance with RSS-210 of the Canadian Interference-Causing Equipment Regulations, with the *worst* margin reading of:

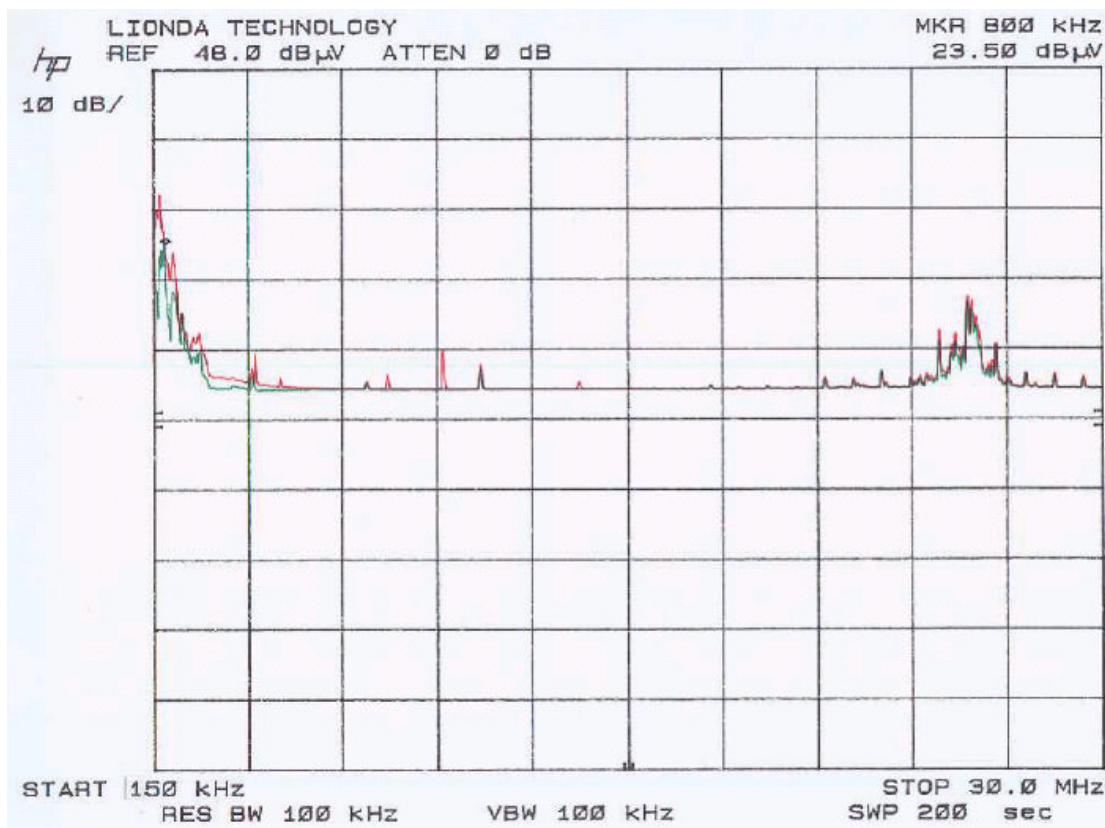
-21.5 dB μ V at 0.660 MHz in the Line mode

3.6 Conducted Emissions Test Data

LINE CONDUCTED EMISSIONS				FCC CLASS B	
Frequency	Amplitude	Detector	Phase	Limit	Margin
MHz	dB μ V	Qp/Ave/Peak	Line/Neutral	dB μ V	dB
0.660	24.5	AVE.	Line	46	-21.5
1.130	21.3	AVE.	Line	46	-24.7
0.660	30.7	QP	Line	56	-25.3
0.660	29.4	QP	Neutral	56	-26.6
1.130	27.8	QP	Neutral	56	-28.2
1.160	20.1	QP	Line	56	-35.9
17.970	16.1	QP	Line	60	-43.9
17.970	15.8	QP	Neutral	60	-44.2

3.7 Plot of Conducted Emissions Test Data

Plot of Conducted Emissions test data was presented hereinafter as reference.



4 - RADIATED EMISSIONS

4.1 Measurement Uncertainty

All measurements involve certain levels of uncertainties, especially in field of EMC. The factors contributing to uncertainties are spectrum analyzer, cable loss, antenna factor calibration, antenna directivity, antenna factor variation with height, antenna phase center variation, antenna factor frequency interpolation, measurement distance variation, site imperfections, mismatch (average), and system repeatability.

Based on NIS 81, The Treatment of Uncertainty in EMC Measurements, the best estimate of the uncertainty of a radiation emissions measurement at BACL is ± 4.0 dB.

4.2 EUT Setup

The radiated emission tests were performed in the open area 3-meter test site, using the setup in accordance with the ANSI C63.4-1992. The specification used was the FCC 15 Subpart C limits.

The Base of EUT was connected to a 120Vac/60Hz power source and it was placed center and the back edge of the test table. The simulator was placed on one side of the EUT base, and the telephone was placed on the other side the EUT base. The rear of the EUT and peripherals were placed flushed with the rear of the tabletop.

The spacing between the peripherals was 10 centimeters.

The External I/O cables were draped over edge of the test table and bundle when necessary.

4.3 Spectrum Analyzer Setup

According to FCC Rules, 47 CFR 15.33 (a) (1), the system was tested to 25GHz.

During the radiated emission test, the spectrum analyzer was set with the following configurations:

Start Frequency	30MHz
Stop Frequency	25GHz
Sweep Speed.....	Auto
IF Bandwidth.....	1 MHz
Video Bandwidth	1 MHz
Quasi-Peak Adapter Bandwidth.....	120 kHz
Quasi-Peak Adapter Mode.....	Normal
Resolution Bandwidth.....	1MHz

4.4 Test Procedure

For the radiated emissions test, both the EUT and all support equipment power cords were connected to the AC floor outlet since the power supply used in the EUT did not provide an accessory power outlet.

Maximizing procedure was performed on the six (6) highest emissions to ensure EUT compliance is with all installation combinations. All data was recorded in the peak detection mode. Quasi-peak readings was performed only when an emission was found to be marginal (within -4 dB of specification limit), and are distinguished with a "Qp" in the data table.

4.5 Corrected Amplitude & Margin Calculation

The Corrected Amplitude is calculated by adding the Antenna Factor and Cable Factor, and subtracting the Amplifier Gain from the Amplitude reading. The basic equation is as follows:

$$\text{Corr. Ampl.} = \text{Indicated Reading} + \text{Antenna Factor} + \text{Cable Factor} - \text{Amplifier Gain}$$

The “**Margin**” column of the following data tables indicates the degree of compliance with the applicable limit. For example, a margin of -7dBμV means the emission is 7dBμV below the maximum limit for applicable limits. The equation for margin calculation is as follows:

$$\text{Margin} = \text{Corr. Ampl.} - \text{Applicable Limit}$$

4.6 Summary of Test Results

According to the data in section 4.7, the EUT complied with the FCC Title 47, Part 15, Subpart C, section 15.205, 15.207, and 15.249 after tested to 10th harmonics as required by FCC and had the worst margin of:

Base, 1GHz to 25GHz, intentional emission, 3 Meters

-4.8 dBμV at 7201.77 MHz in the Horizontal polarization at Low Channel
-1.8 dBμV at 7215.93 MHz in the Horizontal polarization at High Channel

Base, 30MHz to 1GHz, unintentional emission, 3 Meters

-4.6 dBμV at 402.83 MHz in the Horizontal polarization

Handset, 1GHz to 25GHz, intentional emission, 3 Meters

-1.2 dBμV at 2472.21 MHz in the Vertical polarization at Low Channel
-1.0 dBμV at 2476.94 MHz in the Vertical polarization at High Channel

Handset, 30MHz to 1GHz, unintentional, 3 Meters

-4.6 dBμV at 300.00 MHz in the Vertical polarization

4.7 Radiated Emissions Test Result Data**Base Unit, 30 MHz to 25GHz, 3 meters**

Indicated			Table	Antenna		Correction Factor			FCC 15 Subpart C		Comments
Frequency	Ampl.	Direction	Height	Polar	Antenna	Cable Loss	Amp.	Corr. Ampl.	Limit	Margin	
MHz	dBμV/m	Degree	Meter	H/V	dBμV/m	dBμV/m	dB	dBμV/m	dBμV/m	dB	
Low Channel											
7201.77	38.5	270	1.4	H	35.1	5.6	30.0	49.2	54	-4.8	Ave
9602.36	38.0	45	1.3	V	35.1	5.6	30.0	48.7	54	-5.3	Ave
12002.95	38.0	45	1.3	V	35.1	5.6	30.0	48.7	54	-5.3	Ave
9602.36	36.7	270	1.4	H	35.1	5.6	30.0	47.4	54	-6.6	Ave
12002.95	36.5	270	1.4	H	35.1	5.6	30.0	47.2	54	-6.8	Ave
2400.59	84.7	45	1.3	V	28.1	3.4	30.0	86.1	94.0	-7.9	Ave (Fund)
2400.59	83.3	270	1.4	H	28.1	3.4	30.0	84.8	94.0	-9.2	Ave (Fund)
7201.77	33.2	45	1.3	V	35.1	5.6	30.0	43.9	54	-10.1	Ave
4801.18	35.8	270	1.4	H	32.5	4.9	30.0	43.2	54	-10.8	Ave
4801.18	35.0	45	1.3	V	32.5	4.9	30.0	42.4	54	-11.6	Ave
12002.95	43.3	45	1.3	V	35.1	5.6	30.0	54.0	74.0	-20.0	Peak
9602.36	43.2	45	1.3	V	35.1	5.6	30.0	53.9	74.0	-20.1	Peak
7201.77	42.8	45	1.3	V	35.1	5.6	30.0	53.5	74.0	-20.5	Peak
2400.59	90.1	45	1.3	v	28.1	3.4	30.0	91.6	114.0	-22.5	Peak
9602.36	40.8	270	1.4	H	35.1	5.6	30.0	51.5	74.0	-22.5	Peak
12002.95	40.8	270	1.4	H	35.1	5.6	30.0	51.5	74.0	-22.5	Peak
2400.59	89.5	270	1.4	h	28.1	3.4	30.0	91.0	114.0	-23.1	Peak
7201.77	39.8	270	1.4	H	35.1	5.6	30.0	50.5	74.0	-23.5	Peak
4801.18	40.2	45	1.3	V	32.5	4.9	30.0	47.6	74.0	-26.4	Peak
4801.18	38.7	270	1.4	H	32.5	4.9	30.0	46.1	74.0	-27.9	Peak
High Channel											
7215.93	41.5	270	1.4	H	35.1	5.6	30.0	52.2	54	-1.8	Ave
9621.24	41.3	270	1.4	H	35.1	5.6	30.0	52.0	54	-2.0	Ave
9621.24	39.0	315	1.7	V	35.1	5.6	30.0	49.7	54	-4.3	Ave
12026.55	38.8	270	1.4	H	35.1	5.6	30.0	49.5	54	-4.5	Ave
2405.31	82.5	315	1.7	V	28.1	3.4	25.0	89.0	94.0	-5.1	Ave (Fund)
4810.62	40.6	270	1.4	H	32.5	4.9	30.0	48.0	54	-6.0	Ave
2405.31	81.5	270	1.4	H	28.1	3.4	25.0	88.0	94.0	-6.1	Ave (Fund)
7215.93	36.8	315	1.7	V	35.1	5.6	30.0	47.5	54	-6.5	Ave
12026.55	36.3	315	1.7	V	35.1	5.6	30.0	47.1	54	-6.9	Ave
7215.93	53.7	270	1.4	H	35.1	5.6	30.0	64.4	74.0	-9.6	Peak
4810.62	36.7	315	1.7	V	32.5	4.9	30.0	44.1	54	-9.9	Peak
12026.55	52.8	270	1.4	H	35.1	5.6	30.0	63.5	74.0	-10.5	Peak
9621.24	52.5	270	1.4	H	35.1	5.6	30.0	63.2	74.0	-10.8	Peak
4810.62	50.2	270	1.4	H	32.5	4.9	30.0	57.6	74.0	-16.4	Peak
4810.62	49.8	315	1.7	V	32.5	4.9	30.0	57.2	74.0	-16.8	Peak
9621.24	43.0	315	1.7	V	35.1	5.6	30.0	53.7	74.0	-20.3	Peak
7215.93	40.5	315	1.7	V	35.1	5.6	30.0	51.2	74.0	-22.8	Peak
12026.55	40.3	315	1.7	V	35.1	5.6	30.0	51.0	74.0	-23.0	Peak
2405.31	87.8	315	1.7	v	28.1	3.4	30.0	89.3	114.0	-24.8	Peak
2405.31	86.4	270	1.4	h	28.1	3.4	30.0	87.9	114.0	-26.2	Peak

Unwanted										
402.82	47.0	135	1.2	H	16.5	2.9	25.0	41.4	46	-4.6
328.94	48.0	180	1.5	H	15.5	2.8	25.0	41.3	46	-4.7
250.20	43.1	225	1.0	H	13.1	3.0	25.0	34.2	46	-11.8
40.90	38.8	180	1.0	V	12.1	0.7	25.0	26.6	40	-13.4
112.21	39.4	315	1.9	V	11.7	1.3	25.0	27.4	43.5	-16.1
139.31	35.2	180	1.2	V	12.9	1.8	25.0	24.9	43.5	-18.6

Handset Unit, 30 MHz to 25GHz, 3 meters

Indicated			Table	Antenna		Correction Factor			FCC 15 Subpart C		Comments
Frequency	Ampl.	Direction	Height	Polar	Antenna	Cable Loss	Amp.	Corr. Ampl.	Limit	Margin	
MHz	dBµV/m	Degree	Meter	H/V	dBµV/m	dBµV/m	dB	dBµV/m	dBµV/m	dB	
Low Channel											
2472.21	91.4	90	1.4	V	28.1	3.4	30.0	92.9	94.0	-1.1	Ave (Fund)
2472.21	89.6	360	1.4	H	28.1	3.4	30.0	91.1	94.0	-3.0	Ave (Fund)
9888.84	39.5	90	1.4	V	35.1	5.6	30.0	50.2	54	-3.8	Ave
7416.63	37.0	90	1.4	V	35.1	5.6	30.0	47.7	54	-6.3	Ave
7416.63	36.8	360	1.4	H	35.1	5.6	30.0	47.5	54	-6.5	Ave
4944.42	40.0	360	1.4	H	32.5	4.9	30.0	47.4	54	-6.6	Ave
9888.84	35.8	360	1.4	H	35.1	5.6	30.0	46.5	54	-7.5	Ave
4944.42	38.5	90	1.4	V	32.5	4.9	30.0	45.9	54	-8.1	Ave
12361.05	34.7	360	1.4	H	35.1	5.6	30.0	45.4	54	-8.6	Ave
12361.05	32.2	90	1.4	V	35.1	5.6	30.0	42.9	54	-11.1	Ave
2472.21	96.8	90	1.4	V	28.1	3.4	30.0	98.3	114.0	-15.8	Peak
2472.21	94.2	360	1.4	H	28.1	3.4	30.0	95.7	114.0	-18.4	Peak
7416.63	40.5	360	1.4	H	35.1	5.6	30.0	52.9	74.0	-21.1	Peak
9888.84	42.2	90	1.4	V	35.1	5.6	30.0	52.4	74.0	-21.6	Peak
9888.84	41.7	360	1.4	H	35.1	5.6	30.0	51.5	74.0	-22.5	Peak
7416.63	42.2	90	1.4	V	35.1	5.6	30.0	51.2	74.0	-22.8	Peak
4944.42	42.33	90	1.4	V	32.5	4.9	30.0	50.9	74.0	-23.1	Peak
12361.05	40.8	90	1.4	V	35.1	5.6	30.0	50.7	74.0	-23.3	Peak
4944.42	43.5	360	1.4	H	32.5	4.9	30.0	49.6	74.0	-24.4	Peak
12361.05	40.0	360	1.4	H	35.1	5.6	30.0	10.7	74.0	-63.3	Peak
High Channel											
2476.94	91.6	360	1.5	V	28.1	3.4	30.0	93.1	94.0	-1.0	Ave (Fund)
2476.94	90.5	315	1.5	H	28.1	3.4	30.0	92.0	94.0	-2.1	Ave (Fund)
4953.88	41.8	315	1.5	H	32.5	4.9	30.0	49.2	54	-4.8	Ave
4953.88	41.2	360	1.5	V	32.5	4.9	30.0	48.6	54	-5.4	Ave
7430.82	37.3	315	1.5	H	35.1	5.6	30.0	48.0	54	-6.0	Ave
9907.76	37.0	360	1.5	V	35.1	5.6	30.0	47.7	54	-6.3	Ave
7430.82	36.7	360	1.5	V	35.1	5.6	30.0	47.4	54	-6.6	Ave
9907.76	35.0	315	1.5	H	35.1	5.6	30.0	45.7	54	-8.3	Ave
12384.70	34.5	360	1.5	V	35.1	5.6	30.0	45.2	54	-8.8	Ave
12384.70	34.3	315	1.5	H	35.1	5.6	30.0	45.0	54	-9.0	Ave
2476.94	96.7	360	1.5	v	28.1	3.4	30.0	98.2	114.0	-15.9	Peak
2476.94	94.4	315	1.5	h	28.1	3.4	30.0	95.9	114.0	-18.2	Peak
4953.88	47.2	360	1.5	V	32.5	4.9	30.0	54.6	74.0	-19.4	Peak
9907.76	42.5	315	1.5	H	35.1	5.6	30.0	53.2	74.0	-20.8	Peak
7430.82	40.2	315	1.5	H	35.1	5.6	30.0	53.1	74.0	-20.9	Peak
9907.76	42.3	360	1.5	V	35.1	5.6	30.0	53.1	74.0	-20.9	Peak
12384.70	40.5	315	1.5	H	35.1	5.6	30.0	51.2	74.0	-22.8	Peak
7430.82	39.7	360	1.5	V	35.1	5.6	30.0	50.9	74.0	-23.1	Peak
12384.70	40.2	360	1.5	V	35.1	5.6	30.0	50.9	74.0	-23.1	Peak
4953.88	45.7	315	1.5	H	32.5	4.9	30.0	47.1	74.0	-26.9	Peak

Unwanted										
300.00	46.7	0	1.2	H	15.1	4.6	25.0	41.4	46	-4.6
834.50	38.6	135	1.0	H	22.6	2.5	25.0	38.7	46	-7.3
84.40	45.7	135	1.5	V	9.6	1.4	25.0	31.7	40	-8.3
57.53	41.3	270	1.2	V	10.0	0.6	25.0	26.9	40	-13.1
443.12	35.7	90	1.5	H	17.4	2.7	25.0	30.8	46	-15.2
230.91	42.3	225	1.2	H	12.0	1.2	25.0	30.5	46	-15.5
184.26	32.4	90	1.5	V	13.6	4.0	25.0	25.0	43.5	-18.5
117.53	35.4	0	1.2	V	11.9	1.8	25.0	24.1	43.5	-19.4

Note: The handset was positioned and tested in 3 orthogonal axis.

Ave: Average

5 - BAND EDGES TESTING

Requirements: FCC 15.249 (c), the emission power at the START and STOP frequencies shall be at least 50 dB below the level of the fundamental or to the general radiated emission limits in FCC 15.209, whichever is the lesser attenuation.

5.1 Test Procedure

With the EUT's antenna attached, the EUT's radiated emission power was received by the test antenna which was connected to the spectrum analyzer with the START and STOP frequencies set to the EUT's operation band.

5.2 Test Equipment

HP 8566B Spectrum Analyzer
HP 7470A Plotter

5.3 Test Results

Base: Low
Handset: High

