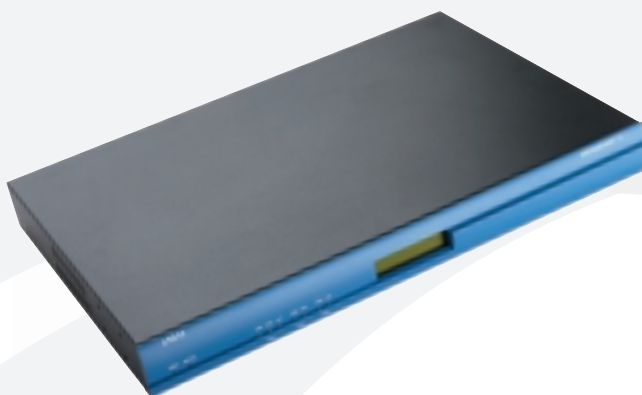




# LASAT MASQUERADE™ II

LASAT MASQUERADE™ II is the all-in-one solution for the small and medium sized company, providing them with a secure and flexible connection to the Internet.



## Technical Specifications

### Components

175 Dhrystone Mips RISC CPU  
2Mb Flash  
32Mb SDRAM  
6,3 Gb hard disk  
Dual 10/100 Ethernet LAN ports  
PCI expansion slot for WAN interfaces  
Built-in ISDN-2 adapter

### LASAT MASQUERADE™ Control Centre in Multiple Languages

The LASAT MASQUERADE™ management interface, called the Control Centre can be accessed in four different languages: English, German, French and Danish

### Virtual Private Network

The optional VPN feature provides the ability of up to 20 remote workers to connect to the corporate LAN. The solution is based on the IPSec standard and the strongest encryption available on the market, 3-DES encryption

### Built-in ISDN-2 adapter

LASAT MASQUERADE™ provides connectivity through the built-in ISDN-2 adapter. This internal EU ISDN-2 adapter may be used together with any other connectivity solution using the PCI interface providing redundancy on the connectivity interfaces

### E-mail Server

E-mail protocols and features supported are SMTP, POP3/IMAP-4. If an existing e-mail-server still has to be used SMTP forward is also supported. Supports scheduled e-mail fetching, POP3 client (mail drop) and relay control

### LASAT MASQUERADE™ User Centre

Each user being added to the LASAT MASQUERADE™ Control Centre will also automatically be provided with the ability to handle private account information, like changing password, setting up vacation replies etc. The user will also be able to read and write e-mails through the built-in browser based e-mail client. Any remote access to either the LASAT MASQUERADE™ Control Centre or the User Centre can be set-up by using a secure connection through a SSL connection, using HTTPS. The User Centre also includes a corporate address book containing all corporate users added to the Control Centre

**WAP support**

The LASAT MASQUERADE™ User Centre can also be accessed through any WAP enabled handset, providing remote workers with the ability to keep up-to-date with company e-mails while being on the road. Private WML pages can also be published and accessed through any WAP enabled handset

**Firewall**

Includes various configuration possibilities; e.g. packet filtering and DMZ set-up. Spoofing protection is also part of the firewall functionality

**Leased Line Connectivity**

LASAT MASQUERADE™ II supports the standards V.35 and X.21 on the PCI interface providing support for Frame Relay, SPPP and Cisco HDLC

**xDSL and other WAN Technologies**

The LASAT MASQUERADE™ II supports any kind of external router providing xDSL, cable and other types of connectivity

**DHCP**

The LASAT MASQUERADE™ II can act both as a DHCP Client and as a DHCP Server

**System Management (Control Centre)**

The easy-to-use browser-based management interface includes configuration dialogues to help and guide the user through the initial set-up process and the daily maintenance

**LASAT MASQUERADE™ Learning Centre**

To enhance the ease-of-use and to support the end-user in the daily maintenance, the LASAT MASQUERADE™ on-box support system has been supplemented with a Web site located on the Internet. The Web site, called "MASQUERADE™ On-Line Learning Center", offers a wealth of resources both for novices and experts. The On-line Learning Centre offers an array of different services like technical courses, frequently asked questions (FAQs), troubleshooting guide, encyclopaedia, and help on specific set-up scenarios and information on new product releases. Only by accessing the Internet through the LASAT MASQUERADE™ unit enables you to gain access to this comprehensive web site without using a user id and password

**Diagnostics**

Advanced tools for diagnosing complicated problems, including debugging tools and different status information

**Web Server and FTP Server**

Apache web server including features such as HTTP upload, MIME type editor and access control. A FTP server is also included

**Operating System**

Linux 2.0

**LAN Interface**

IEEE 802.3, dual 10/100 BASE-Tx auto sensing fast Ethernet with RJ45 connectors. Support for all popular LAN environments. Automatic detection of crossed or straight through cables

**Export Licence**

Worldwide 3-DES crypto export licence from the Danish Agency for Trade and Industry

**Other User Interfaces**

Front LCD display with status information  
LEDs for connection and activity on the interfaces

**Physical**

Height	44mm
Width	350mm
Depth	250mm
Weight	3,5 Kg

**Power**

AC 100-240VAC  
47-63Hz  
Power consumption 12,5W

**Environment**

Maximum altitude 3,000 metres  
Temperature range 1°C to 40°C, with a humidity range of 5% to 80%, non-condensing

**Approvals**

EN55022, Class B  
FCC, part 15, subpart B, Class B  
CISPR 22, Class B  
C-UL/UL according to UL 1950, CAN/CSA-C22.2 No 950  
CE according to tele, EMC and low voltage directives, CTR 3, EN50081-1, EN50082-1 and EN60950