

The wireless way to connect your printer

Wireless Printing

BLUETOOTH Printer Adapter



- **Wireless Printing**
- **Support for laptop, PDA and mobile phone**
- **Windows Plug and Play compatible**
- **Supports the Hardcopy Cable Replacement Profile***
- **High power, +20 dBm, Class1**
- **Flash upgradeable through a wireless link**

The BLUETOOTH Printer Adapter from MPI Tech is designed to add more freedom and flexibility to printing. It meets the requirement of today for sharing and printing information without being logged on to a network. This means that no cabling, additional connectors or other complicated networking hardware is needed in order to print.

The BLUETOOTH Printer Adapter sets a new standard for wireless printing since it not only replaces the parallel cable of the printer but also enables wireless printing of even complex and large documents from mobile phones and PDAs. With the BLUETOOTH Printer Adapter you can print from any portable device equipped with BLUETOOTH technology wherever you are, whenever you need – e.g. in airport lounges, hotel receptions or branch offices abroad.

The BLUETOOTH Printer Adapter enables interaction with other wireless devices and allows you to print within a range of 10 - 100 meters depending on the construction of the building.

The BLUETOOTH Printer Adapter operates with all standard printers. In order to print without cables, it makes use of BLUETOOTH Wireless Technology, a low-cost low power consumption standard that allows multiple mobile devices to communicate wirelessly by use of radio frequencies.

The wireless printing solution from MPI Tech implies elimination of cabling, flexible placement of equipment and increased user convenience and mobility. Further, it is a very economical alternative in environments where wired infrastructure is costly or impractical.

MPI Tech

Corporate Headquarters
Vadstrupvej 35-43
DK-2880 Bagsværd
Denmark
Phone: +45 4436 6000
Fax: +45 4436 6111

MPI Tech is a business unit of i-data international a-s

www.mpitech.com

MPI
TECH

Supported Bluetooth Profiles

Serial Port Profile (SPP)
Object Push Profile (OPP)
Hardcopy Cable Replacement Profile (HCRP)*

SPP allows wireless printing from any Windows application to any printer.

HCRP allows wireless printing from any Windows application to any printer. Furthermore it allows Windows to discover and install printers (Plug and Play) with the BLUETOOTH Printer Adapter attached.

OPP allows wireless printing of ready-to-print files to any printer.

In addition, OPP allows wireless printing of electronic business cards (vCard files) and calendar entries (vCalendar files) to any PCL 3 or higher enabled printer.

Range

Minimum 10 m (33 feet) radius from device in typical use (varies with building construction).

Frequency Band

2.4 GHz ISM band

Radio Output Power

+20 dBm, Class 1

Compatibility

BLUETOOTH v1.1 certified.

Printer Interface

One IEEE 1284-B compliant, high-speed, bi-directional port. Please order converter cable (MPI Tech p/n 999034-030) if your printer is equipped with a small parallel port connector (IEEE 1284-C).

User Interface

Diagnostic button for information printout. Two light indicators showing data receiving and connection status.

Supported Hardware

An updated list of supported BLUETOOTH devices and printers is available at www.mpitech.com/btpa

Supported hardware includes (but is not limited to):

BLUETOOTH PC Cards from: Motorola, Digianswer, IBM, Toshiba and 3Com.

BLUETOOTH enabled Palm Pilot.

Upgradeable

Flash memory for upgrading of the BLUETOOTH Printer Adapter software through a wireless link.

Environmental

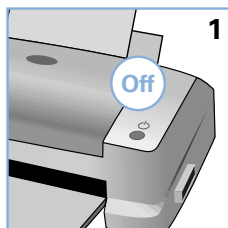
Temperature: 32 – 105° F
Humidity: 10% to 95% non-condensing.

Electrical Requirements

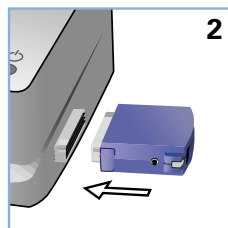
Powered from printer with no external power supply if printer supports it. Otherwise, power supply provided (5.0 Vdc and 350mA).

* Hardcopy Cable Replacement Profile is expected to be released in September 2001

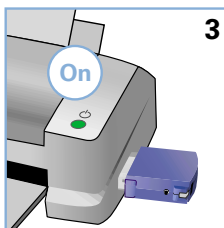
Connecting the BLUETOOTH Printer Adapter



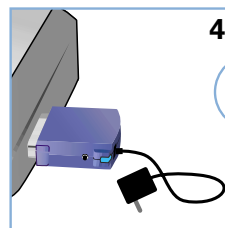
1. Power off the printer.



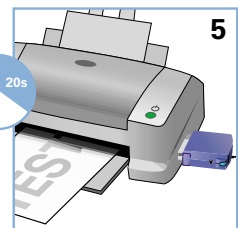
2. Connect the BLUETOOTH Printer Adapter to the parallel port of the printer and secure it using the two mounting clips.



3. Power on the printer.



4. Connect the included power adapter to the BLUETOOTH Printer Adapter and to the power outlet. Turn on the power.



5. The test page is printed after approx. 20 seconds. The BLUETOOTH Printer Adapter can now be used for BLUETOOTH printing.

Part Number

Product Name

942100-130	BLUETOOTH Printer Adapter, EU
942100-230	BLUETOOTH Printer Adapter, UK
942100-330	BLUETOOTH Printer Adapter, US
999034-030	Converter cable, parallel to 1284-C